

DINERO
P. O. DRAWER 10505
MIDLAND, TEXAS 79702

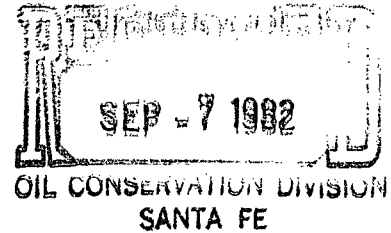
PHONE 915/684-4292

September 2, 1982

State of New Mexico
Oil Conservation Commission
Post Office Box 2088
Santa Fe, New Mexico 87501

Attention: Joe Ramey

*NSL 1580
Rule 104 F
Waivers in
Immediate*



RE: Unorthodox Location
2030' FSL & 1680' FEL
Sec. 22, T-24-S, R-28-E
Eddy County, New Mexico

*Shawn, Atoka, Morrow
Formation*

Gentlemen:

Mr. Dan Nutter and I discussed the requirements for an unorthodox location this morning by telephone. I am enclosing 3 copies of all the required material. If this is all in order and your office can approve this location, I would appreciate it if your office would call me, collect, as soon as possible and let me know of your approval.

The people from the Minerals Management Service requested that we move our location from 1980' FSL and 1908' FEL in order that our pad be completely out of the water when the lake was high. The present location is their suggestion and if there are any questions concerning the location, please feel free to contact them.

Thank you for your consideration of this matter. If any more is required I will be glad to comply.

Sincerely,

DINERO OPERATING COMPANY

Lavonda Norman

Lavonda Norman
Production Supervisor

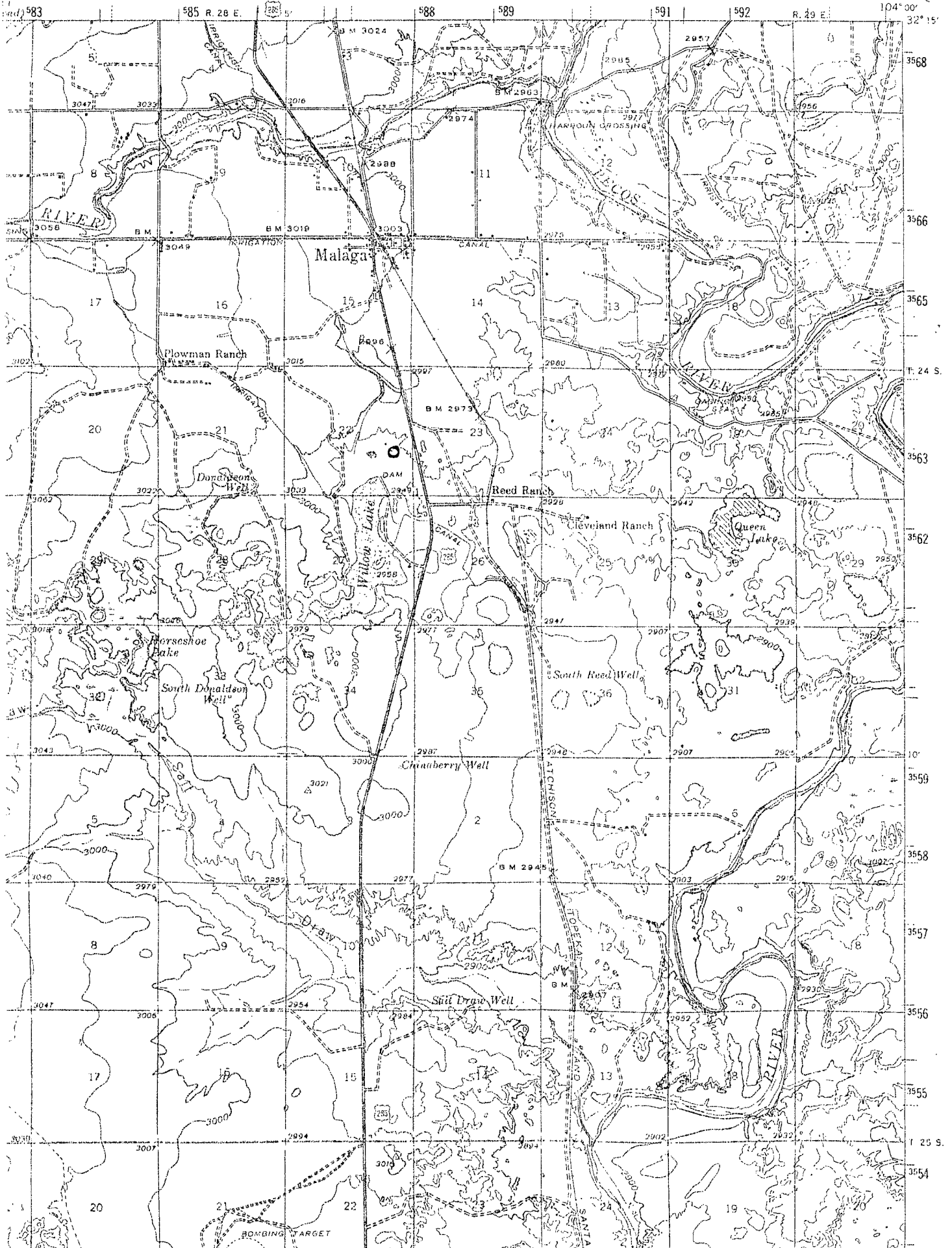
/ln

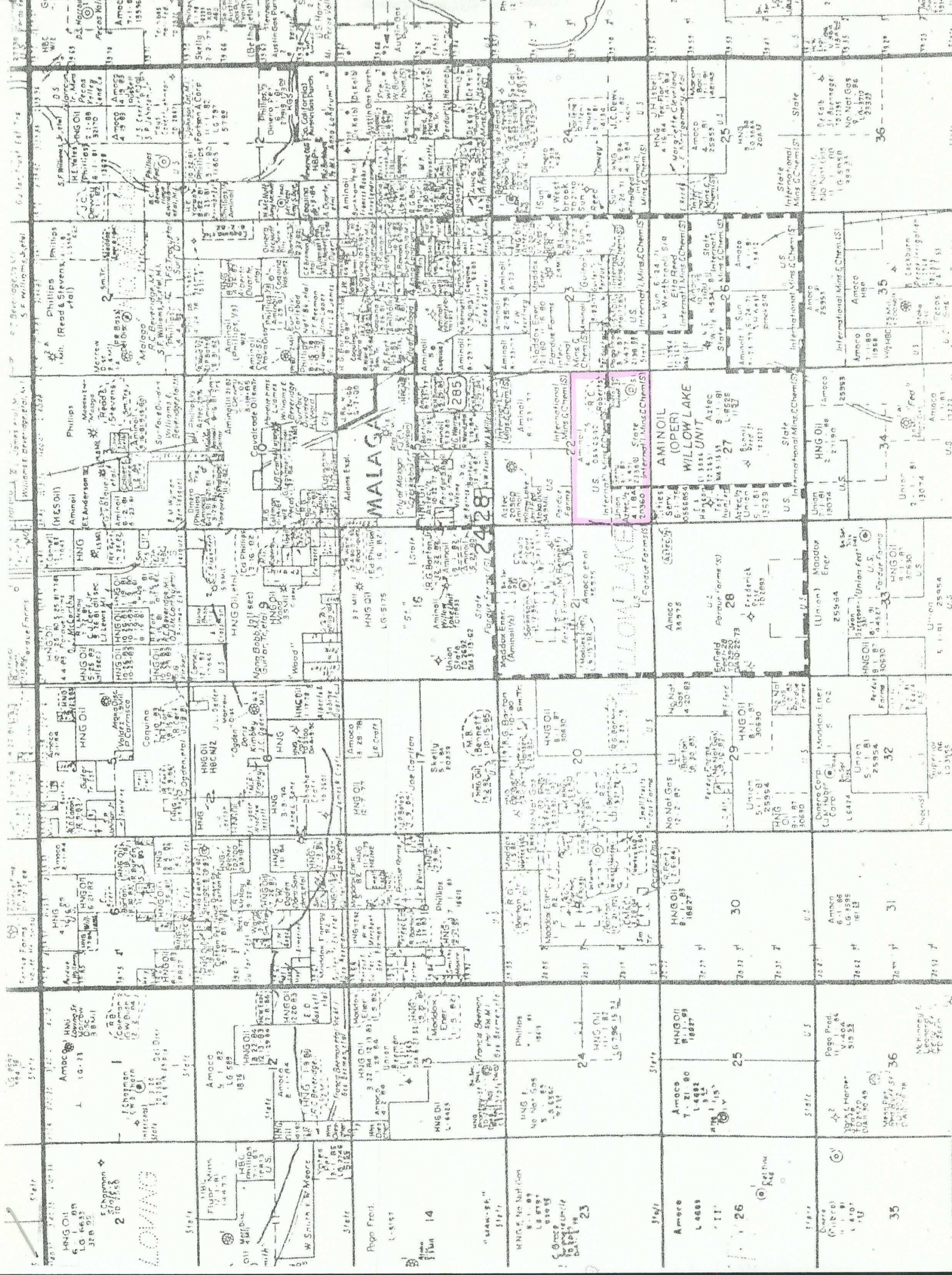
Enclosure

CARLSBAD 15 MI.
LOVING 3 MI.

NEW MEXICO
(EDDY COUNTY)
MALAGA QUADRANGLE
15-MINUTE SERIES

5248 IV
(Nash Truss)





LOS ANGELES

14

23

24

25

26

27

28

29

30

31

32

33

34

35

36

UNITED STATES
DEPARTMENT OF THE INTERIOR
GEOLOGICAL SURVEY

APPLICATION FOR PERMIT TO DRILL, DEEPEN, OR PLUG BACK

1a. TYPE OF WORK

DRILL ☒DEEPEN ☐PLUG BACK ☐

b. TYPE OF WELL

OIL
WELL ☐GAS
WELL ☒

OTHER

SINGLE
ZONE ☐MULTIPLE
ZONE ☐

2. NAME OF OPERATOR

DINERO OPERATING COMPANY

3. ADDRESS OF OPERATOR

P. O. DRAWER 10505, MIDLAND, TEXAS 79702

4. LOCATION OF WELL (Report location clearly and in accordance with any State requirements.)*

At surface

2030' From South Line & 1680' From East Line

At proposed prod. zone

2030' From South Line & 1680' From East Line

14. DISTANCE IN MILES AND DIRECTION FROM NEAREST TOWN OR POST OFFICE*

6 miles South of Loving, New Mexico, 1/2 mile W. of Hwy. 285

15. DISTANCE FROM PROPOSED*
LOCATION TO NEAREST
PROPERTY OR LEASE LINE, FT.
(Also to nearest drlg. line, if any)

1680'

16. NO. OF ACRES IN LEASE

320

17. NO. OF ACRES ASSIGNED
TO THIS WELL

320

18. DISTANCE FROM PROPOSED LOCATION*
TO NEAREST WELL, DRILLING, COMPLETED,
OR APPLIED FOR, ON THIS LEASE, FT.

0

19. PROPOSED DEPTH

12,800'

20. ROTARY OR CABLE TOOLS

Rotary

21. ELEVATIONS (Show whether DF, RT, GR, etc.)

2,969.6' G.L.

22. APPROX. DATE WORK WILL START*

August 31, 1982

23.

PROPOSED CASING AND CEMENTING PROGRAM

SIZE OF HOLE	SIZE OF CASING	WEIGHT PER FOOT	SETTING DEPTH	QUANTITY OF CEMENT
24"	20"	Conductor	40'	Cement of surface
17 1/2"	16"	65.00	450'	Cement to surface
14 3/4"	10 3/4"	40.50 STC	2600'	800 sx. to surface
9 1/2"	7 5/8"	33.70 S-95	9600'	1300 sx. top-4700'
6 1/2"	4 1/2" liner	13.50 LTC		
		N-80	12,800'	400 sx. top-8500'

2 3/8 EUE 8rd. UPSET N-80 4.7# Tubing Otis Packer

Mud Program-----See Exhibit

Blow-out Preventer Program-----See Exhibit

Cement Program:

16" casing	450 sx. CL. C. 2% CC
10 3/4 "	1600 sx. Halliburton Lite 8# salt # Flocele
	200 sx. CL. L. with 2% C.C.
7 5/8 "	500 sx. CL. H. 1/4# Flocele 3/4 CFR-2
4 1/2 "	400 sx. CL. H. 6/10% Halad 22 4/10% CFR-2
	3# KCL

IN ABOVE SPACE DESCRIBE PROPOSED PROGRAM: If proposal is to deepen or plug back, give data on present productive zone and proposed new productive zone. If proposal is to drill or deepen directionally, give pertinent data on subsurface location and measured and true vertical depths. Give blowout preventer program, if any.

24.

SIGNED

Laranda J. Jaman

TITLE

Production Supervisor

DATE

August 27, 1982

(This space for Federal or State office use)

PERMIT NO.

APPROVAL DATE

APPROVED BY

TITLE

DATE

CONDITIONS OF APPROVAL, IF ANY:



Amoco Production Company (USA)

Houston Region—West
500 Jefferson Building
Post Office Box 3092
Houston, Texas 77001

R. G. Smith
Regional Engineering
Manager—West

August 30, 1982

File: JCA-986.51-NM-1582

Re: Non-Standard Location
Aminoil Federal No. 1
Atoka, Strawn and Morrow Formation
Eddy County, New Mexico

State of New Mexico
Energy and Minerals Department
Oil Conservation Commission
P. O. Box 2088
Santa Fe, New Mexico 87501

Gentlemen:

Dinero Operating Company has filed a request to drill their Aminoil Federal No. 1 in Section 22, Township 24 South, Range 28 East, Eddy County, New Mexico, for an attempted completion in the Strawn, Atoka and Morrow formations at the following location:

2030' FSL and 1680' FEL of Sec. 22

As an offset operator, Amoco Production Company has no objection to the drilling location of the subject well.

Yours very truly,

R. G. Smith
mlc

MLC/lrd

cc: Dinero Operating Company
P. O. Drawer 10505
Midland, Texas 79702

WAIVER OF OBJECTION

LEASE NAME: AMINOIL FEDERAL NO. 1

OPERATOR: DINERO OPERATING COMPANY

LEGAL DESCRIPTION OF LEASE: SECTION 22, Township 24 South, Range 28 East
EDDY COUNTY, NEW MEXICO

IRREGULAR LOCATION: WELL IS LOCATED-2030' From the South Line & 1680 from
the East Line, Sec. 22, T-24-S, R-28-E, Eddy County,
New Mexico.

Pursuant to Rule 104, State of New Mexico-Energy and Minerals Department-
Oil Conservation Division, Dinero Operating Company hereby request the
following offset operator to waive any objections to Dinero Operating
Company request to drill a well in Section 22, Township 24 South, Range
28 East, Eddy County, New Mexico, for an attempted completion in the
Strawn, Atoka, and Morrow formation.

OFFSET OPERATOR: Maddox Energy Corporation

LOCATION OF OFFSET ACERAGE: Section 23, Township 24 South, Range 28 East
Eddy County, New Mexico

MADDOX ENERGY CORPORATION

APPROVED BY: *George W. Zahn*
George W. Zahn
FOR: Vice President

DATE: August 25, 1982

Subscribed in my presence and duly sworn to before me, this 25
day of August, 1982.

Salley M. Tandy Hays
Notary Public in and for the county of
Dallas

My Commission Expires: Sept. 4, 1984

WAIVER OF OBJECTION

LEASE NAME: AMINOIL FEDERAL NO. 1

OPERATOR: DINERO OPERATING COMPANY


LEGAL DESCRIPTION OF LEASE: SECTION 22, Township 24 South, Range 28 East
EDDY COUNTY, NEW MEXICO

IRREGULAR LOCATION: WELL IS LOCATED-2030' From the South Line & 1680 from
the East Line, Sec. 22, T-24-S, R-28-E, Eddy County,
New Mexico.

Pursuant to Rule 104, State of New Mexico-Energy and Minerals Department-
Oil Conservation Division, Dinero Operating Company hereby request the
following offset operator to waive any objections to Dinero Operating
Company request to drill a well in Section 22, Township 24 South, Range
28 East, Eddy County, New Mexico, for an attempted completion in the
Strawn, Atoka, and Morrow formation.

OFFSET OPERATOR: Cities Service Company

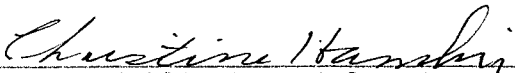
LOCATION OF OFFSET ACERAGE: Section 27, Township 24 South, Range 28 East,
Eddy County, New Mexico

APPROVED BY: 

FOR: **CITIES SERVICE COMPANY**

DATE: AUG 26 1982

Subscribed in my presence and duly sworn to before me, this 26th
day of August, 1982.


Notary Public in and for the county of

Midland

My Commission Expires:

10-31-84

WAIVER OF OBJECTION

LEASE NAME: AMINOIL FEDERAL NO. 1

OPERATOR: DINERO OPERATING COMPANY

LEGAL DESCRIPTION OF LEASE: SECTION 22, Township 24 South, Range 28 East
EDDY COUNTY, NEW MEXICO

IRREGULAR LOCATION: WELL IS LOCATED-2030' From the South Line & 1680 from
the East Line, Sec. 22, T-24-S, R-28-E, Eddy County,
New Mexico.

Pursuant to Rule 104, State of New Mexico-Energy and Minerals Department-
Oil Conservation Division, Dinero Operating Company hereby request the
following offset operator to waive any objections to Dinero Operating
Company request to drill a well in Section 22, Township 24 South, Range
28 East, Eddy County, New Mexico, for an attempted completion in the
Strawn, Atoka, and Morrow formation.

OFFSET OPERATOR: AMINOIL UAS, Inc.

LOCATION OF OFFSET ACERAGE: Sections 21, 22, 27 and 28, Township 24
South, Range 28 East, Eddy County, New Mexico

APPROVED BY: Glenn L. Luff

FOR: AMINOIL USA, Inc.

DATE: August 24, 1982

Subscribed in my presence and duly sworn to before me, this 24th
day of August, 1982.

Kathy L. Kirby
Notary Public For The State of Texas
My Commission Expires 6-9-85

Kathy L. Kirby
Notary Public in and for the county of
midland

My Commission Expires:

WAIVER OF OBJECTION

LEASE NAME: AMINOIL FEDERAL NO. 1

OPERATOR: DINERO OPERATING COMPANY

LEGAL DESCRIPTION OF LEASE: SECTION 22, Township 24 South, Range 28 East
EDDY COUNTY, NEW MEXICO

IRREGULAR LOCATION: WELL IS LOCATED-2030' From the South Line & 1680 from
the East Line, Sec. 22, T-24-S, R-28-E, Eddy County,
New Mexico.

Pursuant to Rule 104, State of New Mexico-Energy and Minerals Department-
Oil Conservation Division, Dinero Operating Company hereby request the
following offset operator to waive any objections to Dinero Operating
Company request to drill ^{the subject well at the captioned location} in Section 22, Township 24 South, Range
28 East, Eddy County, New Mexico, for an attempted completion in the
Strawn, Atoka, and Morrow formation.

OFFSET OPERATOR: Pogo Producing Company

LOCATION OF OFFSET ACERAGE: Sections 23, 26 & 27, Township 24 South,
Range 28 East, Eddy County, New Mexico

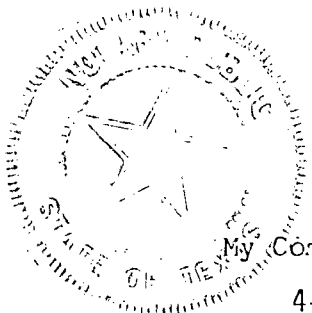
APPROVED BY: *A. T. Carleton*
A. T. Carleton, Vice President

FOR: Pogo Producing Company

DATE: August 25, 1982

Subscribed in my presence and duly sworn to before me, this 25th
day of August, 1982.

Betty Thompson
Notary Public in and for the county of
Midland County, Texas



Commission Expires:

4-30-85

**NEW MEXICO OIL CONSERVATION COMMISSION
WELL LOCATION AND ACREAGE DEDICATION PLAT**

Form C-102
Supersedes C-128
Effective 1-1-65

All distances must be from the outer boundaries of the Section.

Operator Dinero Operating Co.		Lease Aminoil Fed		Well No. 1
Unit Letter J	Section 22	Township 24 South	Range 28 East	County Eddy
Actual Footage Location of Well: 2030 feet from the South line and 1680 feet from the East line				
Ground Level Elev: 2969.6'	Producing Formation MORROW	Pool MALAGA ATOKA MORROW	Dedicated Acreage: 320 Acres	

1. Outline the acreage dedicated to the subject well by colored pencil or hachure marks on the plat below.
2. If more than one lease is dedicated to the well, outline each and identify the ownership thereof (both as to working interest and royalty).
3. If more than one lease of different ownership is dedicated to the well, have the interests of all owners been consolidated by communitization, unitization, force-pooling, etc?

☒ Yes ☐ No If answer is "yes," type of consolidation COMMUNITIZATION

If answer is "no," list the owners and tract descriptions which have actually been consolidated. (Use reverse side of this form if necessary.) _____

No allowable will be assigned to the well until all interests have been consolidated (by communitization, unitization, forced-pooling, or otherwise) or until a non-standard unit, eliminating such interests, has been approved by the Commission.

AMINOIL	AMINOIL	AMINOIL	AMINOIL
AMINOIL	AMINOIL	AMINOIL	AMINOIL
DINERO OPERATING COMPANY AMINOIL FEDERAL NO. 1 WELL			
DINERO OPERATING COMPANY			

CERTIFICATION

I hereby certify that the information contained herein is true and complete to the best of my knowledge and belief.

Lavonda Norman

Name
Lavonda Norman

Position
Production Supervisor

Company
DINERO OPERATING COMPANY

Date
August 27, 1982

I hereby certify that the well location shown on this plat was plotted from field notes of actual surveys made by me or under my supervision, and that the same is true and correct to the best of my knowledge and belief.

Date Surveyed
August 28, 1982

Registered Professional Engineer and/or Land Surveyor

Ronald J. Eidson

Certificate No. **JOHN W. WEST 676**
PATRICK A. ROMERO 6863
Ronald J. Eidson 3239

