

BEFORE THE OIL CONSERVATION COMMISSION  
OF THE STATE OF NEW MEXICO

IN THE MATTER OF THE HEARING  
CALLED BY THE OIL CONSERVATION  
COMMISSION OF NEW MEXICO FOR  
THE PURPOSE OF CONSIDERING:

CASE No. 2096  
Order No. R-1814

APPLICATION OF THE OIL CONSERVATION  
COMMISSION ON ITS OWN MOTION TO  
CONSIDER ESTABLISHING NON-STANDARD  
GAS PRORATION UNITS IN THE BASIN-  
DAKOTA GAS POOL IN CERTAIN PARTIAL  
SECTIONS, SAN JUAN COUNTY, NEW  
MEXICO.

ORDER OF THE COMMISSION

BY THE COMMISSION:

This cause came on for hearing at 9 o'clock a.m. on  
October 13, 1960, at Farmington, New Mexico, before the Oil  
Conservation Commission of New Mexico, hereinafter referred  
to as the "Commission."

NOW, on this 4th day of November, 1960, the Commission,  
a quorum being present, having considered the testimony presented  
and the exhibits received at said hearing, and being fully advised  
in the premises,

FINDS:

(1) That due public notice having been given as required by  
law, the Commission has jurisdiction of this cause and the subject  
matter thereof.

(2) That, in order to ensure systematic development and  
thereby prevent waste and protect correlative rights, the Commis-  
sion should establish individual proration units in the Basin-  
Dakota Gas pool in the tier of partial sections lying immediately  
South of the Seventh Standard Parallel North in Township 28 North,  
Ranges 8 through 13 West, NMPM, San Juan County, New Mexico.

(3) That by Order No. R-1628-A an administrative procedure  
was established whereby the Commission could establish a non-  
standard Dakota gas proration unit consisting of all of partial  
Section 7 and the W/2 W/2 of partial Section 8, Township 28 North,  
Range 10 West, NMPM, San Juan County, New Mexico, which area should  
be excepted from the area divided into non-standard proration  
units by this order.

IT IS THEREFORE ORDERED:

(I) That the following-described areas be and the same are hereby established as non-standard gas proration units in the Basin-Dakota Gas Pool, San Juan and Rio Arriba Counties, New Mexico.

- (1) All of partial Section 7 plus Lot 4 and the S/2 SW/4 of partial Section 8, Township 28 North, Range 13 West, comprising 362.41 acres.
- (2) Lots 1, 2 and 3 and the S/2 SE/4 of partial Section 8 plus Lots 2, 3 and 4, the S/2 SW/4 and the SW/4 SE/4 of partial Section 9, Township 28 North, Range 13 West, comprising 378.28 acres.
- (3) Lot 1 and the SE/4 SE/4 of partial Section 9 plus all of Section 10, Township 28 North, Range 13 West, comprising 344.42 acres.
- (4) All of partial Section 11 plus Lot 4 and the SW/4 SW/4 of partial Section 12, Township 28 North, Range 13 West, comprising 344.28 acres.
- (5) Lots 1, 2 and 3, the SE/4 SW/4, and the S/2 SE/4 of partial Section 12, Township 28 North, Range 13 West, plus Lots 2, 3, 4 and 5, and the SE/4 SW/4 of partial Section 7, Township 28 North, Range 12 West, comprising 364.58 acres.
- (6) Lot 1 and the S/2 SE/4 of partial Section 7 plus Lots 2, 3 and 4 and the S/2 S/2 of partial Section 8, Township 28 North, Range 12 West, comprising 354.12 acres.
- (7) Lot 1 of partial Section 8 plus all of partial Section 9 plus the SW/4 SW/4 of partial Section 10, Township 28 North, Range 12 West, comprising 340.91 acres.
- (8) Lots 1, 2, 3 and 4, the SE/4 SW/4 and the S/2 SE/4 of partial Section 10 plus Lots 3 and 4 and the S/2 SW/4 of partial Section 11, Township 28 North, Range 12 West, comprising 366.46 acres.
- (9) Lots 1 and 2 and the S/2 SE/4 of partial Section 11 plus Lots 2, 3 and 4, the S/2 SW/4 and the SW/4 SE/4 of partial Section 12, Township 28 North, Range 12 West, comprising 337.98 acres.
- (10) Lot 1 and the SE/4 SE/4 of partial Section 12, Township 28 North, Range 12 West, plus all of

partial Section 7, Township 28 North, Range 11 West, comprising 335.02 acres.

- (11) All of partial Section 8 plus Lot 4 and the SW/4 SW/4 of partial Section 9, Township 28 North, Range 11 West, comprising 333.55 acres.
- (12) Lots 1, 2 and 3, the SE/4 SW/4 and the S/2 SE/4 of partial Section 9 plus Lots 3 and 4 and the S/2 SW/4 of partial Section 10, Township 28 North, Range 11 West, comprising 328.45 acres.
- (13) Lots 1 and 2 and the S/2 SE/4 of partial Section 10 plus Lots 2, 3 and 4, the S/2 SW/4 and the SW/4 SE/4 of partial Section 11, Township 28 North, Range 11 West, comprising 323.29 acres.
- (14) Lot 1 and the SE/4 SE/4 of partial Section 11 plus all of partial Section 12, Township 28 North, Range 11 West, comprising 318.14 acres.
- (15) Lots 1, 2 and 3, the SE/4 SW/4 and the S/2 SE/4 of partial Section 8 plus Lots 3 and 4 and the S/2 SW/4 of partial Section 9, Township 28 North, Range 10 West, comprising 319.67 acres.
- (16) Lots 1 and 2 and the S/2 SE/4 of partial Section 9 plus Lots 2, 3 and 4, the S/2 SW/4 and the SW/4 SE/4 of partial Section 10, Township 28 North, Range 10 West, comprising 322.88 acres.
- (17) Lot 1 and the SE/4 SE/4 of partial Section 10 plus all of partial Section 11, Township 28 North, Range 10 West, comprising 327.29 acres.
- (18) All of partial Section 12, Township 28 North, Range 10 West, plus Lots 4 and 5 of partial Section 7, Township 28 North, Range 9 West, comprising 322.94 acres.
- (19) Lots 1, 2 and 3, the SE/4 SW/4 and the S/2 SE/4 of partial Section 7 plus Lots 3 and 4 and the S/2 SW/4 of partial Section 8, Township 28 North, Range 9 West, comprising 345.25 acres.
- (20) Lots 1 and 2 and the S/2 SE/4 of partial Section 8 plus Lots 2, 3 and 4, the S/2 SW/4 and the SW/4 SE/4 of partial Section 9, Township 28 North, Range 9 West, comprising 340.52 acres.
- (21) Lot 1 and the SE/4 SE/4 of partial Section 9 and all of partial Section 10, Township 28 North, Range 9 West, comprising 338.40 acres.

- (22) All of partial Section 11 plus Lot 4 and the SW/4 SW/4 of partial Section 12, Township 28 North, Range 9 West, comprising 334.46 acres.
- (23) Lots 1, 2 and 3, the SE/4 SW/4 and the S/2 SE/4 of partial Section 12, Township 28 North, Range 9 West, plus Lots 4 and 5 and the SE/4 SW/4 of partial Section 7, Township 28 North, Range 8 West, comprising 312.28 acres.
- (24) Lots 1, 2 and 3 and the S/2 SE/4 of partial Section 7 plus Lots 3 and 4 and the S/2 SW/4 of partial Section 8, Township 28 North, Range 8 West, comprising 341.36 acres.
- (25) Lots 1 and 2 and the S/2 SE/4 of partial Section 8 plus Lots 2, 3 and 4 and the S/2 SW/4 of partial Section 9, Township 28 North, Range 8 West, comprising 333.84 acres.
- (26) Lot 1 and the S/2 SE/4 of partial Section 9 plus Lots 2, 3 and 4, the S/2 SW/4 and the SW/4 SE/4 of partial Section 10, Township 28 North, Range 8 West, comprising 335.11 acres.
- (27) Lot 1 and the SE/4 SE/4 of partial Section 10 plus Lots 2, 3 and 4 and the S/2 S/2 of partial Section 11, Township 28 North, Range 8 West, comprising 331.76 acres.
- (28) Lot 1 of partial Section 11 plus all of partial Section 12, Township 28 North, Range 8 West, comprising 327.87 acres.

all in San Juan County, New Mexico.

(II) That each of the above-described non-standard gas proration units shall be assigned an acreage factor for allowable purposes which shall be the ratio of the acreage in that unit to the acreage in a standard gas proration unit in the Basin-Dakota Gas Pool.

DONE at Santa Fe, New Mexico, on the day and year hereinabove designated.

STATE OF NEW MEXICO  
OIL CONSERVATION COMMISSION

JOHN BURROUGHS, Chairman

MURRAY E. MORGAN, Member

SEAL

A. L. PORTER, Jr., Member & Secretary

esr/



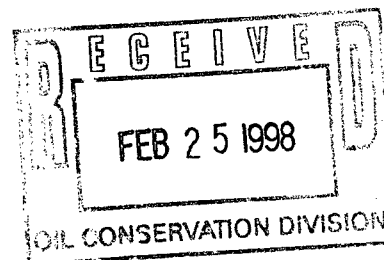
NSL 3/17/98

Mid-Continent Region  
Exploration/Production

Conoco Inc.  
10 Desta Drive, Suite 100W  
Midland, TX 79705-4500  
(915) 686-5400

February 23, 1998

Mr. Michael Stogner  
New Mexico Oil Conservation Division  
2040 S. Pacheco  
Santa Fe, New Mexico 87504



RE: Application for Non-Standard Location  
Jackson Com #1E API # 30-045-25592

Dear Mr. Stogner,

The proposed recompletion of this well in the Blanco Mesaverde requires a non-standard order. This well is located in Section 8, T-28-N, R-9-W San Juan County, New Mexico and is currently producing from the Basin Dakota. The Mesaverde/ Dakota pool rules require a standard location to be 790' from the East Section line. This well is located 1690' FSL & 30' FEL. The well is only 30' from the east section line.

As shown on the attached production for the Dakota, there is insufficient evidence to justify drilling stand alone wells. Utilization of the Jackson COM 1E will prevent economic waste by allowing access to the Mesaverde in an existing wellbore. An application to downhole commingle production utilizing the subtraction method has been filed.

The offset operator plat shows the operators that could be affected by this non-standard location and enclosed is evidence that they have been notified.

On October 12, 1982, then operator Tenneco Oil Company received administrative approval for a non-standard location for the drilling and completion of this well in the Basin Dakota. Steep topography and the unusual size of the spacing unit were cited as reasons for non-conformance with spacing requirements. A copy of Tenneco's application and order NSL 1587 is attached. Conoco, Inc respectfully requests that the administrative approval granted under the NSL-1587 be modified to include the Blanco Mesaverde. If there are any further questions concerning this application please call me at (915) 686-5798.

Sincerely,

Kay Maddox  
Regulatory Agent

cc: Oil Conservation Division - Aztec  
William J LeMay, Director - OCD, Santa Fe



STATE OF NEW MEXICO  
ENERGY AND MINERALS DEPARTMENT  
OIL CONSERVATION DIVISION

BRUCE KING  
GOVERNOR

POST OFFICE BOX 2088  
STATE LAND OFFICE BUILDING  
SANTA FE, NEW MEXICO 87501  
(505) 827-2434

October 12, 1982

Tenneco Oil Company  
P. O. Box 3249  
Englewood, Colorado 80155

Attention: Ken Russell

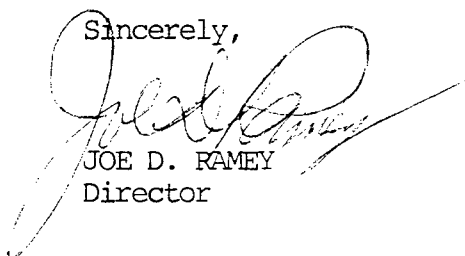
Administrative Order NSL-1587

Gentlemen:

Reference is made to your application for a non-standard location for your Jackson Com Well No. 1-E to be located 1690 feet from the South line and 30 feet from the East line of Section 8, Township 28 North, Range 9 West, NMPM, Basin Dakota formation, San Juan County, New Mexico.

By authority granted me under the provisions of Rule 104 F of the Division Rules and Regulations, the above-described unorthodox location is hereby approved.

Sincerely,

  
JOE D. RAMEY  
Director

JDR/RLS/jc

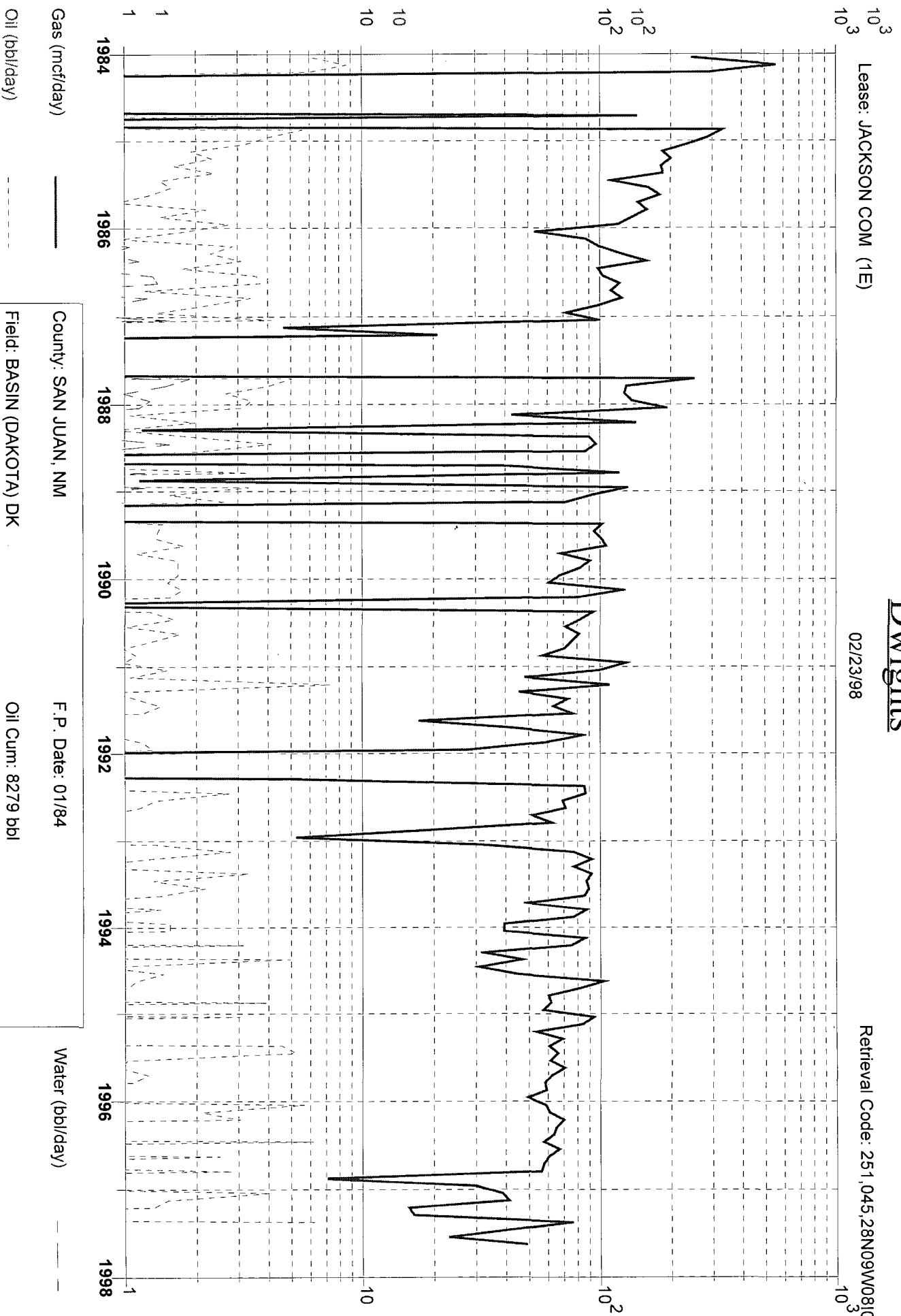
cc: Oil Conservation Division - Aztec  
Oil & Gas Engineering Committee - Hobbs

# Dwights

Lease: JACKSON COM (1E)

02/23/98

Retrieval Code: 251,045,28N09W08100DK



County: SAN JUAN, NM

Field: BASIN (DAKOTA) DK

Reservoir: DAKOTA

Operator: AMOCO PRODUCTION CO

F.P. Date: 01/84

Oil Cum: 8279 bbl

Gas Cum: 400.6 mmcf

Location: 81 28N 9W

District I  
PO Box 1980, Hobbs, NM 88241-1980

State of New Mexico  
Energy, Minerals & Natural Resources Department

Revised February 21, 1994

instructions on back

District II  
PO Drawer DD, Artesia, NM 88211-0719  
District III  
1000 Rio Brazos Rd. Aztec, NM 87410

## OIL CONSERVATION DIVISION

PO Box 2088  
Santa Fe, NM 87504-2088

Submit to Appropriate District Office

State Lease - 4 Copies

Fee Lease - 3 Copies

District IV  
PO Box 2088, Santa Fe, NM 87504-2088

☐ AMENDED REPORT

## WELL LOCATION AND ACREAGE DEDICATION PLAT

API Number 30-045-25592		2 Pool Code 72319		3 Pool Name Blanco Mesaverde	
4 Property Code		5 Property Name Jackson Com			6 Well Number 1E
7 OGRID No. 005073		8 Operator Name Conoco Inc., 10 Desta Drive, Ste. 100W, Midland, TX 79705-4500			9 Elevation 6602'

## 10 Surface Location

UL or lot no.	Section	Township	Range	Lot Idn	Feet from the	North/South line	Feet from the	East/West line	County
I	8	28N	9W		1690	South	30	East	San Juan

## 11 Bottom Hole Location If Different From Surface

UL or lot no.	Section	Township	Range	Lot Idn	Feet from the	North/South line	Feet from the	East/West line	County

12 Dedicated Acres 273.92 340.2	13 Joint or Infill	14 Consolidation Code	15 Order No.
---------------------------------------	--------------------	-----------------------	--------------

NO ALLOWABLE WILL BE ASSIGNED TO THIS COMPLETION UNTIL ALL INTERESTS HAVE BEEN CONSOLIDATED  
OR A NON-STANDARD UNIT HAS BEEN APPROVED BY THE DIVISION

				<b>17 OPERATOR CERTIFICATION</b> I hereby certify that the information contained herein is true and complete to the best of my knowledge and belief Signature: <i>Kay Maddox</i> Printed Name: Kay Maddox Title: Regulatory Agent Date: February 23, 1998	
<b>18 SURVEYOR CERTIFICATION</b> I hereby certify that the well location shown on this plat was plotted from field notes of actual surveys made by me or under my supervision, and that the same is true and correct to the best of my belief. Date of Survey: Signature and Seal of Professional Surveyor:				Certificate Number	



NEW MEXICO OIL CONSERVATION COMMISSION  
WELL LOCATION AND ACREAGE DEDICATION PLAT

Form C-102  
Supersedes C-128  
Effective 1-1-65

All distances must be from the outer boundaries of the Section.

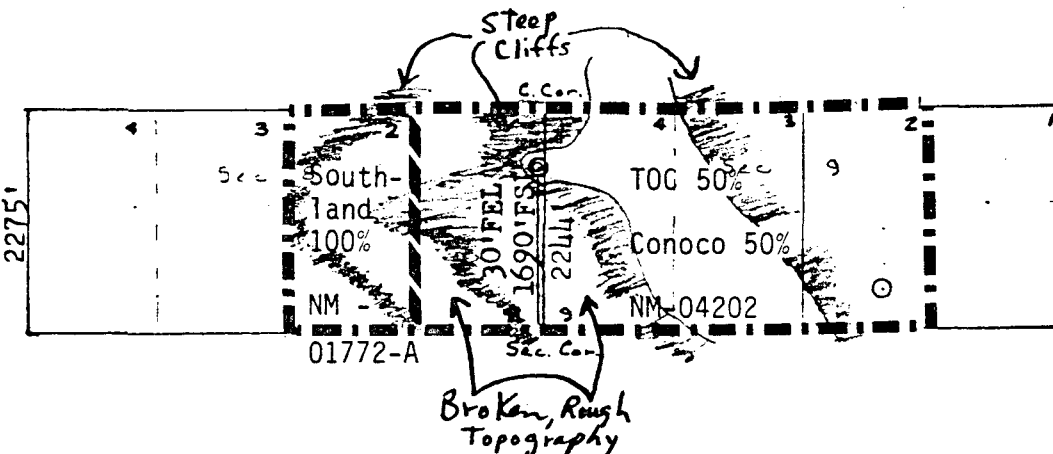
Operator <b>TENNECO OIL COMPANY</b>			Lease <b>JACKSON COM</b>		Well No. <b>1E</b>
Unit Letter <b>I (Lot #1)</b>	Section <b>8</b>	Township <b>28N</b>	Range <b>9W</b>	County <b>San Juan</b>	
Actual Footage Location of Well: <b>1690</b> feet from the <b>South</b> line and <b>30</b> feet from the <b>East</b> line					
Ground Level Elev. <b>6602</b>	Producing Formation <b>Dakota</b>	Pool <b>Basin Dakota</b>	Dedicated Acreage: <b>340.52</b> Acres		

1. Outline the acreage dedicated to the subject well by colored pencil or hachure marks on the plat below.
2. If more than one lease is dedicated to the well, outline each and identify the ownership thereof (both as to working interest and royalty).
3. If more than one lease of different ownership is dedicated to the well, have the interests of all owners been consolidated by communitization, unitization, force-pooling, etc?

☒ Yes ☐ No If answer is "yes," type of consolidation Communitized

If answer is "no," list the owners and tract descriptions which have actually been consolidated. (Use reverse side of this form if necessary.)

No allowable will be assigned to the well until all interests have been consolidated (by communitization, unitization, forced-pooling, or otherwise) or until a non-standard unit, eliminating such interests, has been approved by the Commission.



Scale: 1"=2000'

CERTIFICATION

I hereby certify that the information contained herein is true and complete to the best of my knowledge and belief.

*Ken Russell*

Name

Ken Russell

Position

Sr. Production Analyst

Company

Tenneco Oil Co.

Date

September 20, 1982

I hereby certify that the well location shown on this plat was plotted from field notes of actual surveys made by me or under my supervision, and that the same is true and correct to the best of my knowledge and belief.

Date Surveyed

August 1, 1982

Registered Professional Engineer and Land Surveyor

*Frederick J. Kerr*  
Frederick J. Kerr

Certificate

2050

R 10 W

R 9 W

T

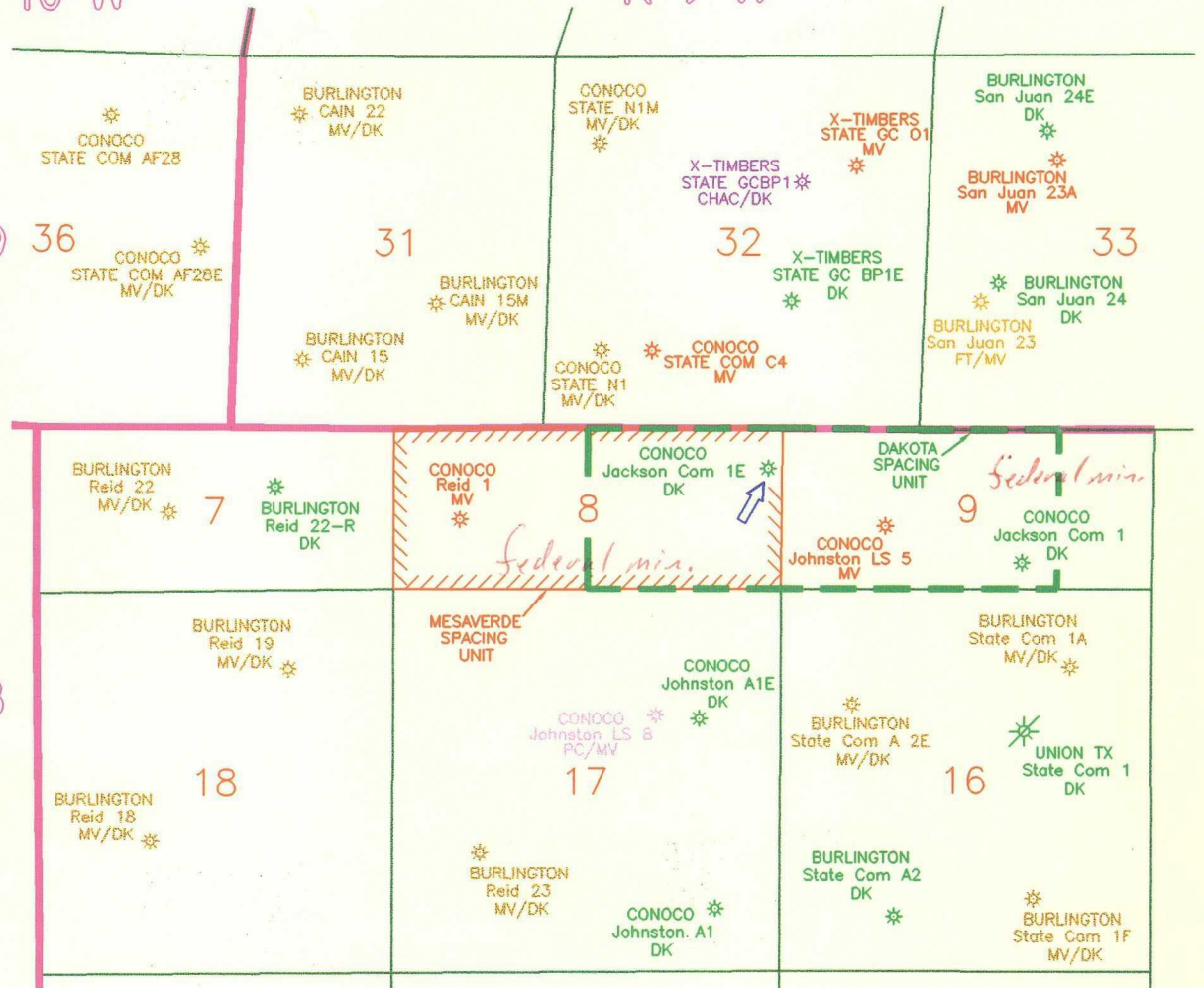
29

N

T

28

N



# NOTES

## NOTE:

ADMINISTRATIVE ORDER NSL-1587 issued for Basin Dakota. Requesting order modification to include Blanco Mesaverde.

DATE: 02/21/98

DRAWN BY: GLG

CHECKED BY:

APPROVED BY:

SCALE: 1" = 2640'

STATE PLANE COORDINATES REFERRED TO  
NAD27 - N.M. WEST  
STATE PLANE COORDINATES  
ZONE - 3003



EPNGNA  
MIDLAND DIVISION

CONOCO JACKSON COM 1 E  
MESAVERDE & DAKOTA PRODUCERS

Non-Standard Location

STATE API COUNTY WELL  
30 \ 045 \ 25592

DRAWING

JAC\_COM1

CONOCO INC. OFFICE  
10 DESTA DRIVE WEST  
MIDLAND, TEXAS 79705



Mid-Continent Region  
Exploration/Production

Conoco Inc.  
10 Desta Drive, Suite 100W  
Midland, TX 79705-4500  
(915) 686-5400

Application for Non-standard Location Order  
Jackson Com #1E API # 30-045-25592  
Section 8, T-28-N, R-9-W, San Juan County, NM

**Offset Operator:**

Burlington Resources  
PO Box 4289  
Farmington, New Mexico 87499

P 497 374 166

US Postal Service

**Receipt for Certified Mail**

No Insurance Coverage Provided.

Do not use for International Mail (See reverse)

Sent to <b>Burlington Resources</b>	
Street & Number <b>PO Box 4289</b>	
Post Office, State, & ZIP Code <b>Farmington, Nm 87499</b>	
Postage	\$
Certified Fee	
Special Delivery Fee	
Restricted Delivery Fee	
Return Receipt Showing to Whom & Date Delivered	
Return Receipt Showing to Whom, Date, & Addressee's Address	
TOTAL Postage & Fees	\$
Postmark or Date	

PS Form 3800, April 1995