



NSC 1634
Rule 104 F
12-30-82

Getty Oil Company | P.O. Box 3360, Casper, Wyoming, 82602-3360

~~OIL CONSERVATION DIVISION~~

Central Exploration and Production Division

December 3, 1982

DEC 10 1982

New Mexico Oil Conservation Commission
P.O. Box 2088
Santa Fe, New Mexico 87501
Attention: Mr. Joe D. Ramey, Director

RECEIVED

#4

RE: Application for an Unorthodox Well
Location by Recompletion of Getty's
Farming "E" Well #34 (New well #4)
1450' FNL & 920' FWL of Sec. 2-T24N-R6W
Rio Arriba County, New Mexico

Otero Gallup Oil Pool

Gentlemen:

Getty Oil Company requests approval of an unorthodox well location for the above-referenced well. Original completion of this well is in the Basin Dakota formation. In the Dakota formation the location of this well is orthodox. However, Getty wishes to plug the Dakota formation back and recomplete this well in the Otero Gallup formation. The proposed recompletion will, therefore, place the well location closer than 330 feet from the boundary of the new spacing unit line and also the quarter-quarter section line (See attached C-102). The proposed recompletion will also change the well name to Farming "E" #4 in the Otero Gallup formation.

By copy of the attached letter and plats, offset operators were notified of this request for an unorthodox well location by certified mail.

Very truly yours,
GETTY OIL COMPANY

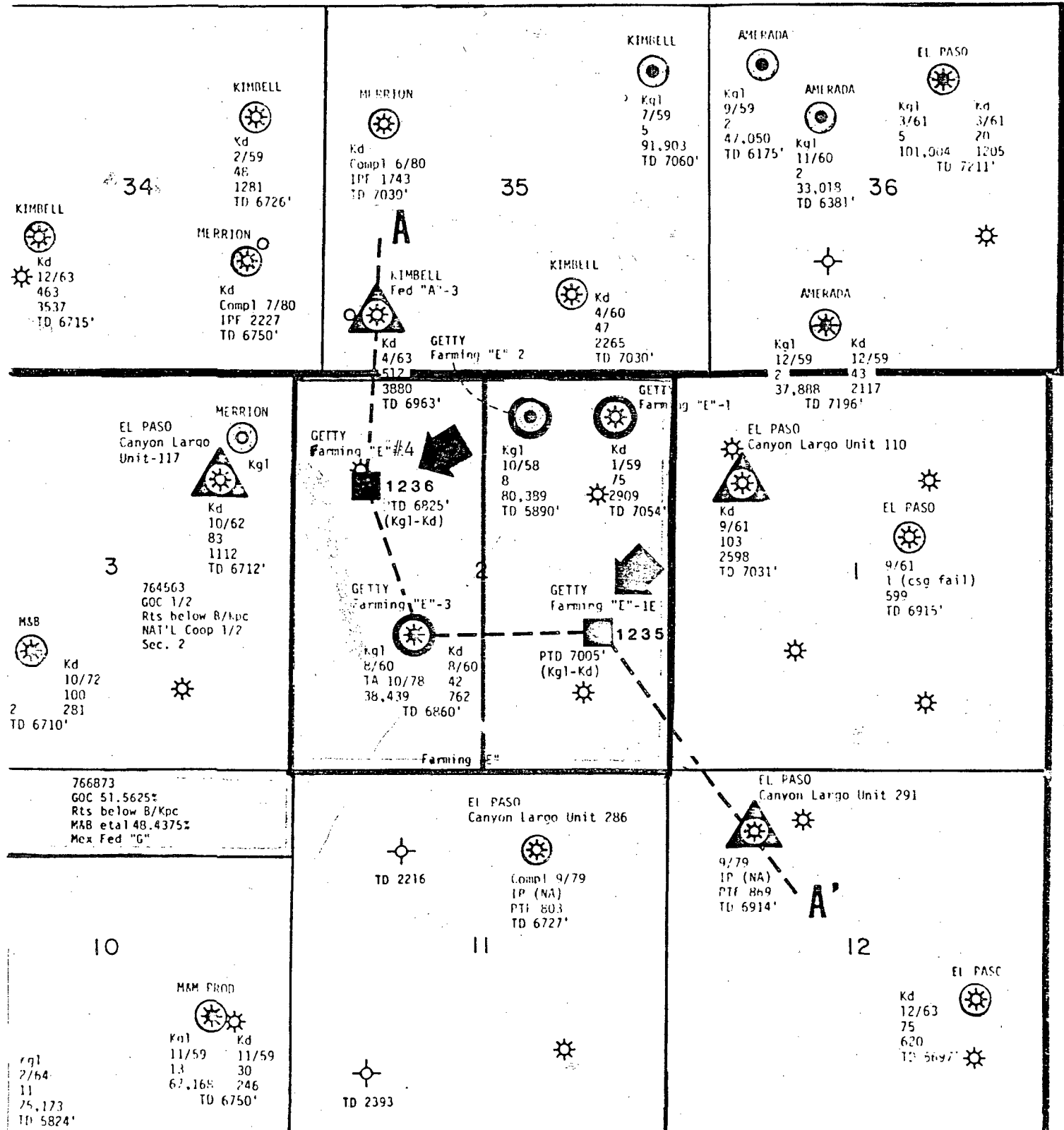
David W. Bowers
Area Superintendent

SP/sp
Attachments

R 6 W

T
25
N

T
24
N



--GALLUP
--DATE OF FIRST PROD
--CURRENT PROD BOPD
--CUM PROD BO TO 1-1-80

Kd -----DAKOTA
3/61----DATE OF FIRST PROD
44 -----CURRENT PROD MCSPD
1196----CUM PROD MMCF TO 1-1-80

GETTY OIL COMPANY
Farming "E" Well No. 4
Otero Gallup Formation
1450' FNL & 920' FWL, Sec. 2-T24N-R6W
Rio Arriba County, New Mexico
December 3, 1982



Getty Oil Company | P.O. Box 3360, Casper, Wyoming 82602-3360

Central Exploration and Production Division

December 3, 1982

OIL CONSERVATION DIVISION

DEC 10 1982

RECEIVED

RE: Getty Oil Company
Farming "E" #3E (New well #4)
1450' FNL & 920' FWL of Sec. 2-T24N-R6W
Rio Arriba County, New Mexico

Gentlemen:

Please find attached a copy of our Application for an Unorthodox Well Location which we are submitting to the New Mexico Oil Conservation Commission.

If you as an offset operator, have no objections to the recompletion of this well from the Basin Dakota formation to the Otero Gallup formation, please sign the waiver at the bottom of this page and send to:

New Mexico Oil Conservation Commission
P.O. Box 2088
Santa Fe, New Mexico 87501
Attn: Mr. Joe D. Ramey, Director

We would appreciate your returning one executed copy to the undersigned.

Very truly yours,
GETTY OIL COMPANY

David W. Bowers
Area Superintendent

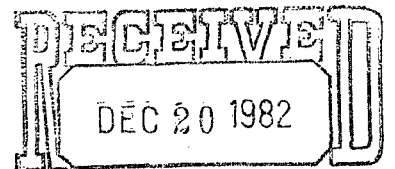
SP/sp
Attachments

W A I V E R

We hereby waive any objections to Getty Oil Company's Application for an Unorthodox Well Location as set forth above.

Name of Person (for Company)

Date



Getty Oil Company | P.O. Box 3360, Casper, Wyoming 82602-3360

OIL CONSERVATION DIVISION
SANTA FE

Central Exploration and Production Division

December 14, 1982

New Mexico Oil Conservation Commission
P.O. Box 2088
Santa Fe, New Mexico 87501

Attn: Mr. Joe D. Ramey, Director

Re: Application for Unorthodox Well
Location by Recompletion of Getty's
Farming "E" #3E (New Well #4)
1450' FNL & 920' FWL Sec. 2-T24N-R6W
Rio Arriba County, New Mexico

Dear Mr. Ramey:

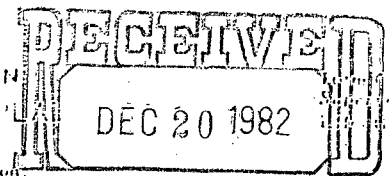
Please disregard our Application for an Unorthodox Well Location in the Otero Gallup Formation for the above referenced well dated December 3, 1982. Instead we are submitting an Application for an Unorthodox Well Location in the Devil's Fork Gallup Formation.

Sincerely,
GETTY OIL COMPANY

D. W. Bowers
Area Superintendent

SP/cs

NEW MEXICO OIL CONSERVATION COMMISSION
WELL LOCATION AND ACREAGE DEDICATION PLAT



All distances must be from the outer boundaries of the Section

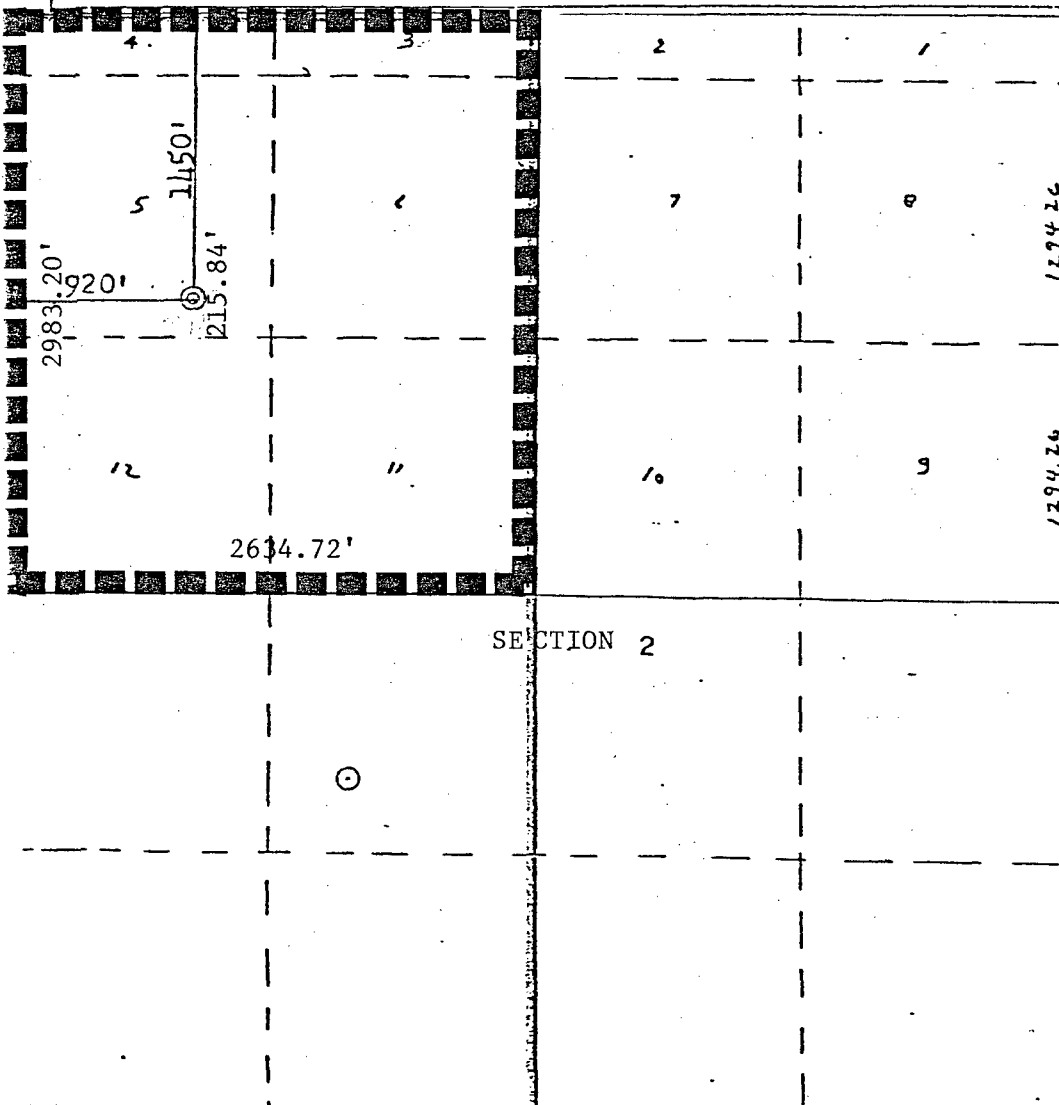
Operator Getty Oil Company			Lease Farming "E"			OIL CONSERVATION COMMISSION SANTA FE 4		
Unit Letter D	Section 2	Township 24N	Range 6W	County Rio Arriba				
Actual Footage Location of Well: 1450 feet from the North line and 920 feet from the West line								
Ground Level Elev. 6429'	Producing Formation Gallup		Pool Devil's Fork - Gallup			Dedicated Acreage: 180.44		

1. Outline the acreage dedicated to the subject well by colored pencil or hachure marks on the plat below.
2. If more than one lease is dedicated to the well, outline each and identify the ownership thereof (both as to working interest and royalty).
3. If more than one lease of different ownership is dedicated to the well, have the interests of all owners been consolidated by communitization, unitization, force-pooling, etc?

☐ Yes ☐ No If answer is "yes," type of consolidation _____

If answer is "no," list the owners and tract descriptions which have actually been consolidated. (Use reverse side of this form if necessary.) _____

No allowable will be assigned to the well until all interests have been consolidated (by communitization, unitization, forced-pooling, or otherwise) or until a non-standard unit, eliminating such interests, has been approved by the Commission.



CERTIFICATION

I hereby certify that the information contained herein is true and complete to the best of my knowledge and belief.

Name	<i>D. W. Bann</i>
Position	Area Superintendent
Company	Getty Oil Company
Date	12-14-82

I hereby certify that the well location shown on this plat was plotted from field notes of actual surveys made by me or under my supervision, and that the same is true and correct to the best of my knowledge and belief.

Date Surveyed	April 1983
Registered Professional Engineer and Land Surveyor	<i>Fred B. Kerr, Jr.</i>
Certificate No.	2050