

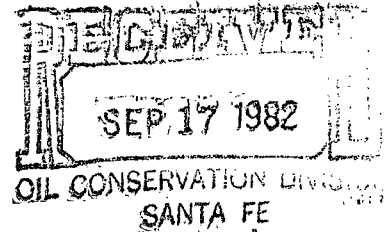
Energy Reserves Group, Inc.  
P.O. Box 3280  
Casper, Wyoming 82602-3280  
307 265 7331

NSL 1673  
Rule 104 F  
No offsets no waiting



September 15, 1982

State of New Mexico  
Oil Conservation Division  
P.O. Box 2088  
Santa Fe, New Mexico 87501



Re: Request for Unorthodox Well Location  
Gallegos Canyon Unit, San Juan County,  
New Mexico

Gentlemen:

Energy Reserves Group, Inc. respectfully requests approval of the below referenced well location.

Gallegos Canyon Unit Well No. 337  
965' FSL 675' FEL  
Section 26, T28N-R12W  
San Juan County, New Mexico  
Federal Lease SF-078904

This proposed well is to be drilled to the Pictured Cliffs formation at a depth of 1,835'. Energy Reserves Group, Inc. is the sub operator of the Gallegos Canyon Unit which includes all formations above the base of the Pictured Cliffs Formation. Attached is a map delineating the Gallegos Canyon Unit Boundry and the Pictured Cliffs participating area.

This location is on lands currently controlled by the Navajo Irrigation Project Authority. The stake was moved to its present location to minimize conflicts with the irrigated farm land. This site has been inspected by personnel from the N.A.P.I., and has been verbally approved. Any alternate location within the 160 acres spacing unit would involve conflicts with the anticipated farm usage of the lands.

We would appreciate your review of our request based upon the topographic conflicts.

Very truly yours,

ENERGY RESERVES GROUP, INC.

  
William J. Plant  
Field Services Administrator

WJF/ml  
Attach.



STATE OF NEW MEXICO  
ENERGY AND MINERALS DEPARTMENT

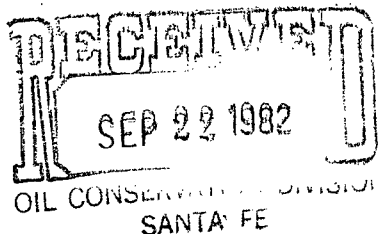
OIL CONSERVATION DIVISION  
AZTEC DISTRICT OFFICE

1000 RIO BRAZOS ROAD  
AZTEC, NEW MEXICO 87410  
(505) 334-6178

OIL CONSERVATION DIVISION  
BOX 2088  
SANTA FE, NEW MEXICO 87501

DATE 9-13-82

RE: Proposed MC \_\_\_\_\_  
Proposed DHC \_\_\_\_\_  
Proposed NSL ☒ \_\_\_\_\_  
Proposed SWD \_\_\_\_\_  
Proposed WFX \_\_\_\_\_  
Proposed PMX \_\_\_\_\_



Gentlemen:

I have examined the application dated 9-3-82  
for the Energy Reserves Corp. GCU # 337 P-26-28N-12W  
Operator Lease and Well No. Unit, S-T-R

and my recommendations are as follows:

Approve  
\_\_\_\_\_  
\_\_\_\_\_  
\_\_\_\_\_  
\_\_\_\_\_  
\_\_\_\_\_

Yours truly,

Jeff A. Edmister

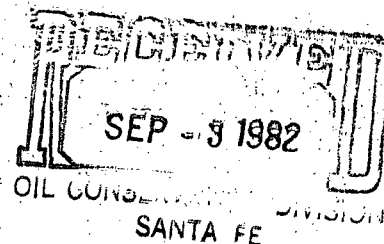
Energy Reserves Group, Inc.  
P.O. Box 3280  
Casper, Wyoming 82602  
Phone 307 265 7331

NSL  
original letters being sent  
9-15-82

 Energy Reserves Group

April 29, 1982

State of New Mexico  
Oil Conservation Division  
Box 2088  
Santa Fe, New Mexico 87501



Re: Request for Unorthodox Well Location  
Gallegos Canyon Unit, San Juan County, New Mexico

Gentlemen:

Energy Reserves Group, Inc. respectfully request approval of the below referenced well location.

Gallegos Canyon Unit Well No. 337  
965' FSL 675' FEL  
Section 26, T28N-R12W  
San Juan County, New Mexico  
Federal Lease SF-078904

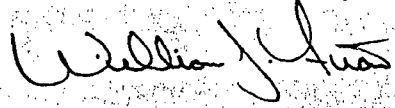
This proposed well is to be drilled to the Pictured Cliffs formation at a depth of 1,835'. Energy Reserves Group, Inc. is the sub operator of the Gallegos Canyon Unit which includes all formations above the base of the Pictured Cliffs Formation. Attached is a map delineating the Gallegos Canyon Unit boundry and the Pictured Cliffs participating area.

This location is on lands currently controlled by the Navajo Irrigation Project Authority. The stake was moved to its present location to minimize conflicts with the irrigated farm land. This site has been inspected by personnel from the N.A.P.I., and has been verbally approved. Any alternate location within the 160 acre spacing unit would involve conflicts with the anticipated farm usage of the lands.

We would appreciate your review of our request based upon the topographic conflicts.

Very truly yours,

ENERGY RESERVES GROUP, INC.

  
William J. Fiant  
Field Services Administrator

WJF/ef  
Attach.

Purchased  
operators rights  
From Amoco from  
base of P.C. to surf.

UNITED STATES  
DEPARTMENT OF THE INTERIOR  
GEOLOGICAL SURVEY

5. LEASE DESIGNATION AND SERIAL NO.

SF-078904

6. IF INDIAN, ALLOTTEE OR TRIBE NAME

7. UNIT AGREEMENT NAME

Gallegos Canyon Unit

8. FARM OR LEASE NAME

9. WELL NO.

337

10. FIELD AND POOL, OR WILDCAT

West Kuta Pictured Cliffs

11. SEC., T., R., M., OR BLK.  
AND SURVEY OR AREA

Sec. 26, T28N-R12W

12. COUNTY OR PARISH 13. STATE

San Juan

New Mexico

## APPLICATION FOR PERMIT TO DRILL, DEEPEN, OR PLUG BACK

1a. TYPE OF WORK

DRILL ☒DEEPEN ☐PLUG BACK ☐

b. TYPE OF WELL

OIL  
WELL ☐GAS  
WELL ☒

OTHER

SINGLE  
ZONE ☒MULTIPLE  
ZONE ☐

2. NAME OF OPERATOR

Energy Reserves Group, Inc.

3. ADDRESS OF OPERATOR

Box 3280, Casper, Wyoming 82602

4. LOCATION OF WELL (Report location clearly and in accordance with any State requirements.\*)  
At surface

965' FSL 675' FEL

At proposed prod. zone

14. DISTANCE IN MILES AND DIRECTION FROM NEAREST TOWN OR POST OFFICE\*

Approx. 9 miles Southeast of Farmington, New Mexico

15. DISTANCE FROM PROPOSED\*

LOCATION TO NEAREST  
PROPERTY OR LEASE LINE, FT.  
(Also to nearest drlg. unit line, if any) 675'

16. NO. OF ACRES IN LEASE

27,795.68

17. NO. OF ACRES ASSIGNED  
TO THIS WELL

160

18. DISTANCE FROM PROPOSED LOCATION\*  
TO NEAREST WELL, DRILLING, COMPLETED,  
OR APPLIED FOR, ON THIS LEASE, FT.

2200'

19. PROPOSED DEPTH

1,835'

20. ROTARY OR CABLE TOOLS

Rotary

21. ELEVATIONS (Show whether DF, RT, GR, etc.)

5907' GR ungraded

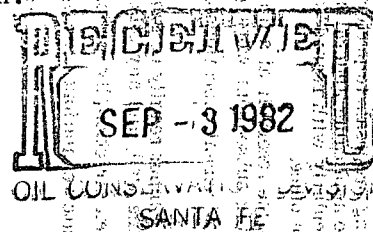
22. APPROX. DATE WORK WILL START\*

Summer, 1982

## 23. PROPOSED CASING AND CEMENTING PROGRAM

SIZE OF HOLE	SIZE OF CASING	WEIGHT PER FOOT	SETTING DEPTH	QUANTITY OF CEMENT
9-7/8"	7"	17#	100'	Cement to the surface
6-1/4"	4-1/2"	9.5#	1,835"	Cement to the surface

It is proposed to drill the above referenced well with rotary tools from the surface to T.D. The anticipated zone of completion is the Pictured Cliffs Formation. Attached is the 10 Point Drilling Plan and 13 Point Surface Use Plan.



IN ABOVE SPACE DESCRIBE PROPOSED PROGRAM: If proposal is to deepen or plug back, give data on present productive zone and proposed new productive zone. If proposal is to drill or deepen directionally, give pertinent data on subsurface locations and measured and true vertical depths. Give blowout preventer program, if any.

24.

SIGNED

TITLE Field Services Administrator DATE April 29, 1982

(This space for Federal or State office use)

PERMIT NO.

APPROVAL DATE

APPROVED BY

TITLE

DATE

CONDITIONS OF APPROVAL, IF ANY:

R 13 W

## GALLEGOS CANYON UNIT - PICTURED CLIFFS

San Juan County, New Mexico

R 12 W

T  
29  
NT  
28  
NT  
27  
N

PROPOSED LOCATION

Note: Unnumbered wells are not Unit-Pictured Cliffs wells.

## OIL CONSERVATION DIVISION

STATE OF NEW MEXICO  
ENERGY AND MINERALS DEPARTMENTP. O. BOX 2088  
SANTA FE, NEW MEXICO 87501Form C-102  
Revised 10-1-78

All distances must be from the outer boundaries of the Section.

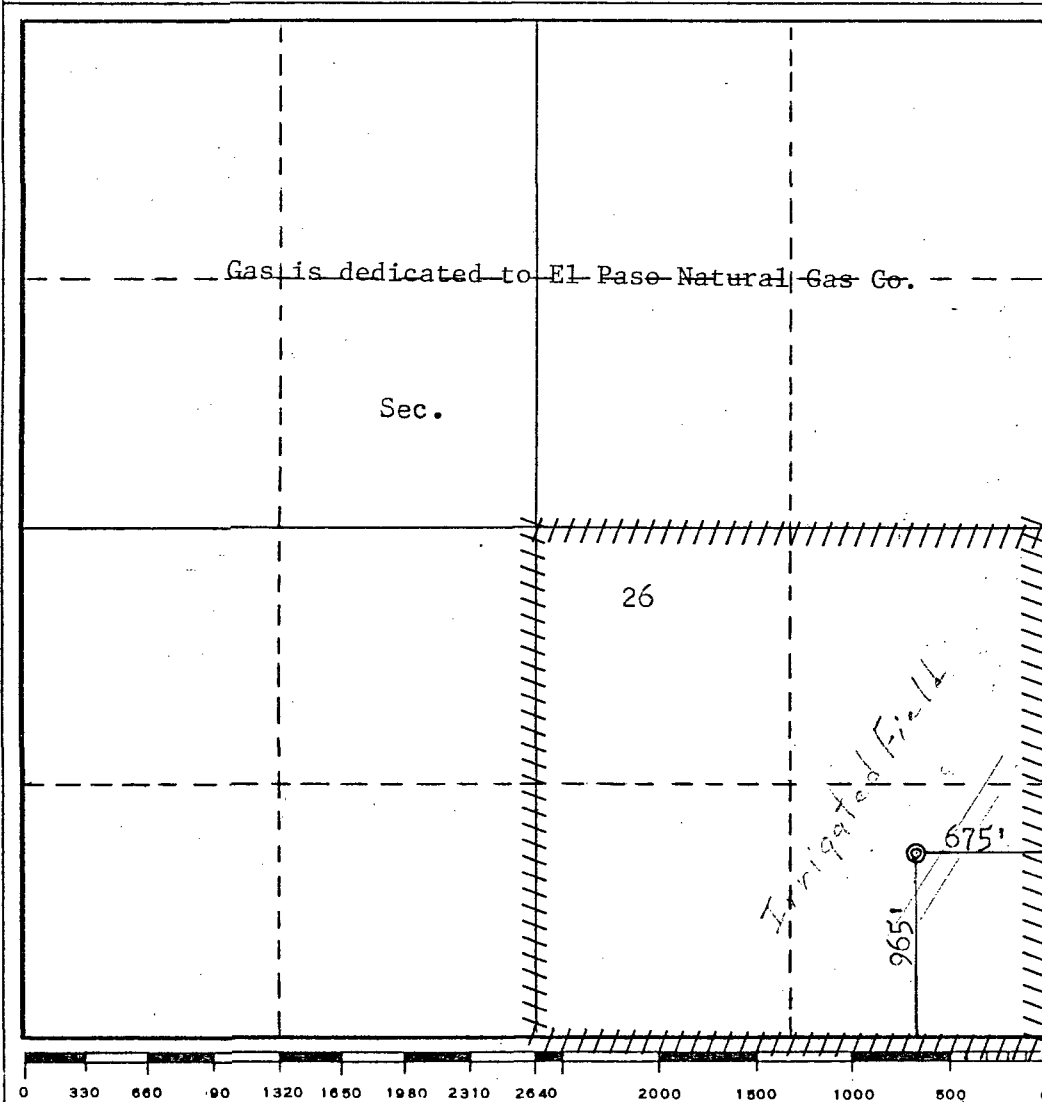
Operator ENERGY RESERVES GROUP, INC.		Lease GALLEGOS CANYON UNIT		Well No. 337
Unit Letter P	Section 26	Township 28N	Range 12W	County San Juan
Actual Footage Location of Well: 965 feet from the South line and 675 feet from the East line				
Ground Level Elev. 5907	Producing Formation Pictured Cliffs	Pool West Kutz Pictured Cliffs	Dedicated Acreage: 160 Acres	

1. Outline the acreage dedicated to the subject well by colored pencil or hachure marks on the plat below.
2. If more than one lease is dedicated to the well, outline each and identify the ownership thereof (both as to working interest and royalty).
3. If more than one lease of different ownership is dedicated to the well, have the interests of all owners been consolidated by communitization, unitization, force-pooling, etc?

☐ Yes ☐ No If answer is "yes," type of consolidation \_\_\_\_\_

If answer is "no," list the owners and tract descriptions which have actually been consolidated. (Use reverse side of this form if necessary.) \_\_\_\_\_

No allowable will be assigned to the well until all interests have been consolidated (by communitization, unitization, forced-pooling, or otherwise) or until a non-standard unit, eliminating such interests, has been approved by the Commission.



## CERTIFICATION

I hereby certify that the information contained herein is true and complete to the best of my knowledge and belief.

Name

Position

Field Services Administrator

Company

Energy Reserves Group, Inc.

Date

May 4, 1982

I hereby certify that the well location shown on this plat was plotted from field notes of actual surveys made by me or under my supervision, and that the same is true and correct to the best of my knowledge and belief.

Date Surveyed

April 24, 1982

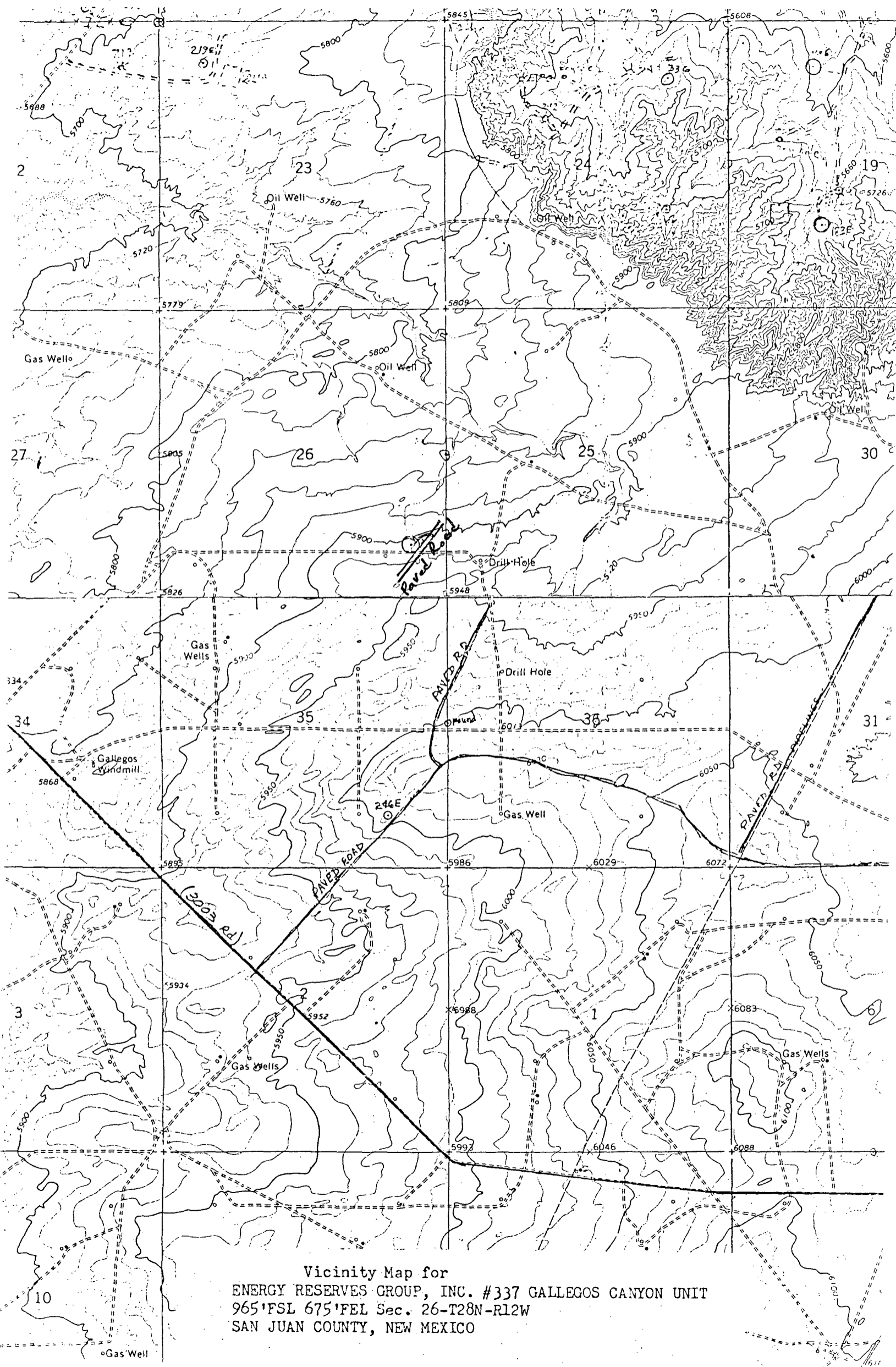
Registered Professional Engineer  
and/or Land Surveyor

Fred B. Kerr Jr.

Certificate No.

3950

B. KERR, JR.



Vicinity Map for  
ENERGY RESERVES GROUP, INC. #337 GALLEGOS CANYON UNIT  
965' FSL 675' FEL Sec. 26-T28N-R12W  
SAN JUAN COUNTY, NEW MEXICO