

*Released January 9, 1985  
February 4, 1985*

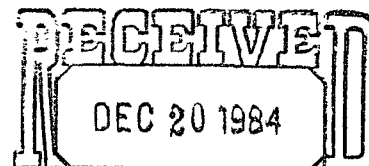
*By Dec*



MYCO INDUSTRIES, INC.  
Oil Producers

ARTESIA, NEW MEXICO 88210

YATES BLDG. - 207 SOUTH 4TH  
PHONE: (505) 746.3558



OIL CONSERVATION DIVISION

SANTA FE

*NSC-1967*

*RULE-104F(I)*

December 17, 1984

Mr. Richard Stamets, Secretary-Director  
New Mexico Oil Conservation Division  
P. O. Box 2088  
Santa Fe, New Mexico 87501

Re: Big Eddy Unit #107  
990' FNL and 1500' FEL  
Section 10-T22S-R28E  
Eddy County, New Mexico

*Federal Land.*

*Dedicated Acreage - NW/4 NE/4*

Dear Sir,

Myco Industries, Inc. would appreciate an administrative approval for a proposed unorthodox Bone Springs location as provided for under NMOCD Rule 104F.

Our preferred location for this well was 990' FNL & 1650' FEL. Reasons for requesting the non-standard location include the following:

1. Topographical: Location fell on the edge of old Indian Draw and BLM would not permit us to drill there. Also a gas pipeline is approximately 50' from center hole to the west.

Enclosed please find a copy of the lease map showing offsetting lease operators, a topographical map of the area, and a survey plat. All offsetting lease acreage is owned by Myco Industries, Inc.

Formations we expect to drill through are: Salt, Base of Salt, Delaware, and Bone Springs.

Thank you for your help in this matter.

Sincerely,

MYCO INDUSTRIES, INC.

*Cy Cowan*

Cy Cowan  
Regulatory Agent

CC/ps  
Enclosures



MYCO INDUSTRIES, INC.  
Oil Producers

ARTESIA, NEW MEXICO 88210

YATES BLDG. - 207 SOUTH 4TH  
PHONE: (505) 746.3558

Janaury 10, 1985

David Catanach  
New Mexico Oil Conservation Division  
P.O. Box 2088  
Santa Fe, New Mexico 87501

Re: Big Eddy Unit #107  
990' FNL and 1500' FEL  
Sec. 10-T22S-R28E  
Eddy County, NM

Dear David,

As per our conversation as of today, this letter is to conferm that Bass Enterprises Production Co. has been notified by letter of Myco Industries, Inc. intentions concerning the captioned well.

Thank you for your cooperation in this matter.

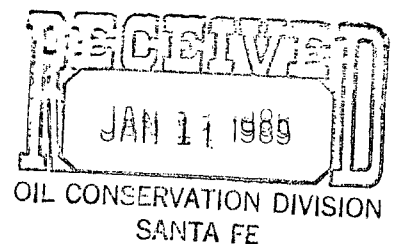
Sincerely,

MYCO INDUSTRIES, INC.

*Cy Cowan*  
Cy Cowan  
Regulatory Agent

CC/gaa

*Sent to  
Bass  
First City National Bank Tower  
Fort Worth, Texas  
Sent to  
1-14-85  
1-14-85*



NEW MEXICO OIL CONSERVATION COMMISSION  
WELL LOCATION AND ACREAGE DEDICATION PLAT

Form C-102  
Supersedes C-128  
Effective 1-1-65

All distances must be from the outer boundaries of the Section.

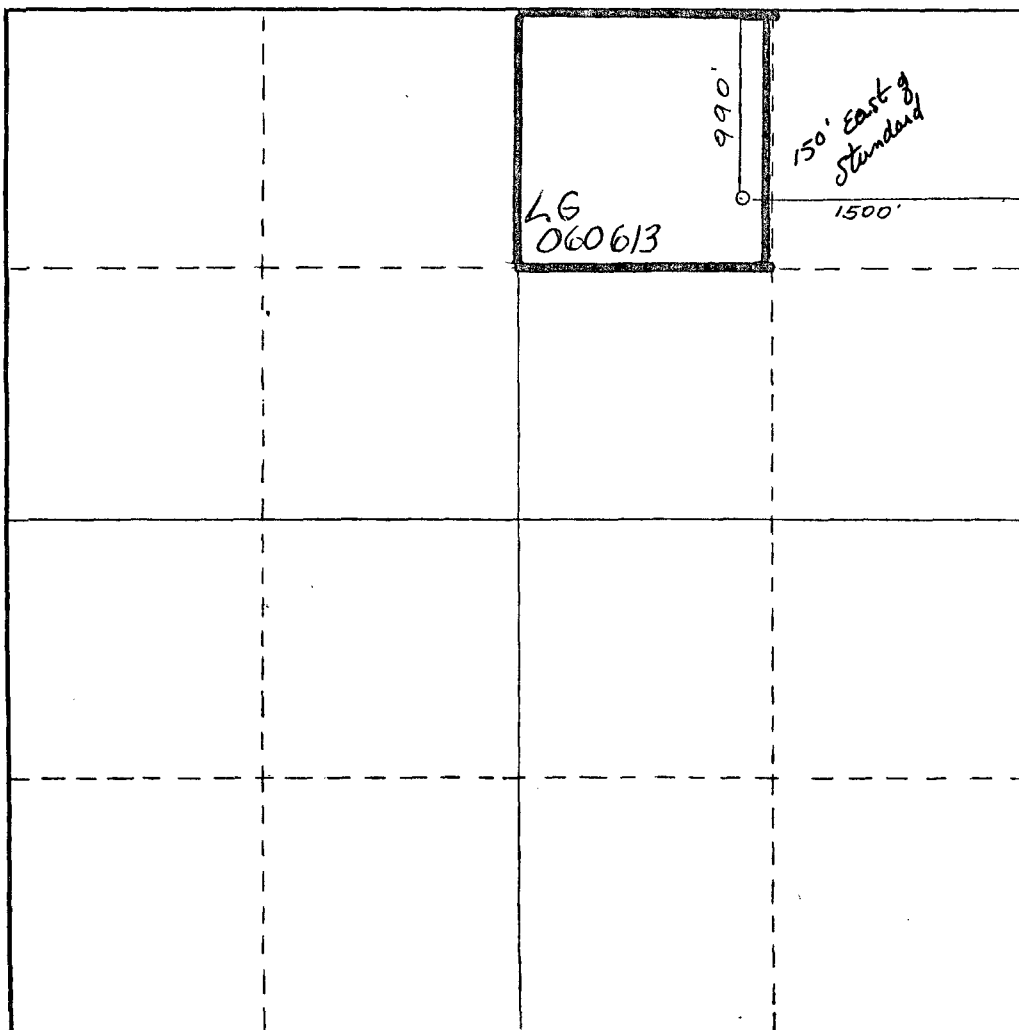
Operator <b>MYCO INDUSTRIES INC.</b>			Lease <b>Big Eddy Unit</b>		Well No. <b>107</b>
Unit Letter	Section <b>10</b>	Township <b>22 South</b>	Range <b>28 East</b>	County <b>Eddy</b>	
Actual Footage Location of Well: <b>990</b> feet from the <b>North</b> line and <b>1500</b> feet from the <b>East</b> line					
Ground Level Elev. <b>3130.</b>	Producing Formation <b>DELEWARE</b>		Pool <b>UNDES DELEWARE</b>	Dedicated Acreage: <b>40</b> Acres	

1. Outline the acreage dedicated to the subject well by colored pencil or hachure marks on the plat below.
2. If more than one lease is dedicated to the well, outline each and identify the ownership thereof (both as to working interest and royalty).
3. If more than one lease of different ownership is dedicated to the well, have the interests of all owners been consolidated by communitization, unitization, force-pooling, etc?

☐ Yes ☒ No If answer is "yes," type of consolidation \_\_\_\_\_

If answer is "no," list the owners and tract descriptions which have actually been consolidated. (Use reverse side of this form if necessary.) \_\_\_\_\_

No allowable will be assigned to the well until all interests have been consolidated (by communitization, unitization, forced-pooling, or otherwise) or until a non-standard unit, eliminating such interests, has been approved by the Commission.



CERTIFICATION

I hereby certify that the information contained herein is true and complete to the best of my knowledge and belief.

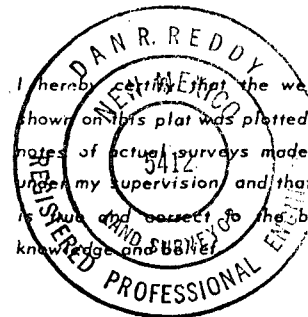
*Cy Cowan*  
Name  
Cy Cowan

Position  
Regulatory Agent

Company  
Myco Industries, Inc.

Date  
12/14/84

I hereby certify that the well location shown on this plat was plotted from field notes of actual surveys made by me or under my supervision and that the same is true and correct to the best of my knowledge and belief.

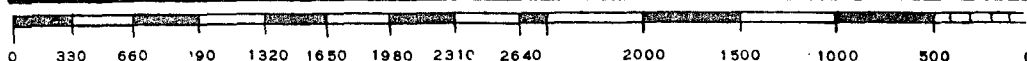


Date Surveyed  
December 12, 1984

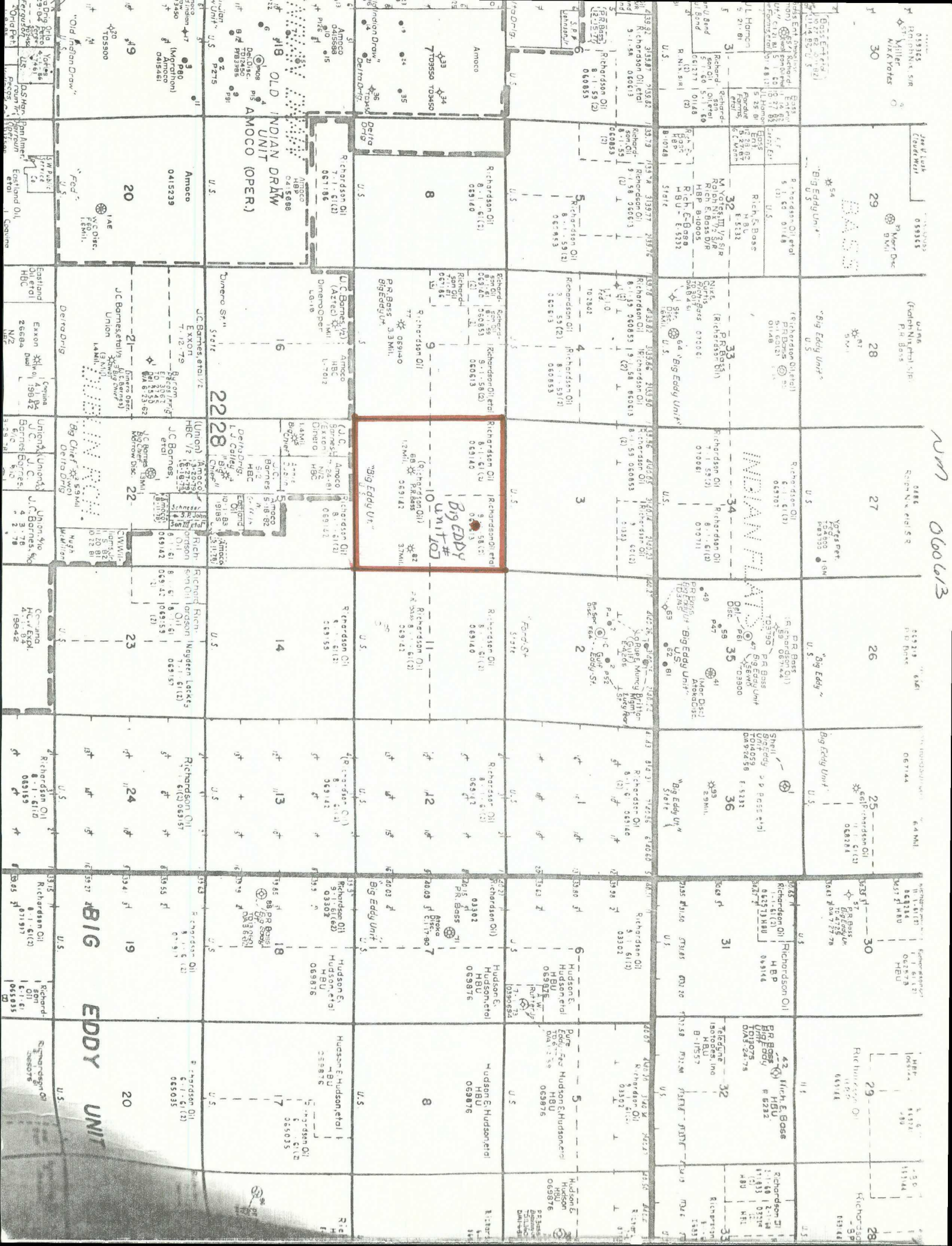
Registered Professional Engineer  
and/or Land Surveyor

*Dan R. Reddy*  
Certificate No.

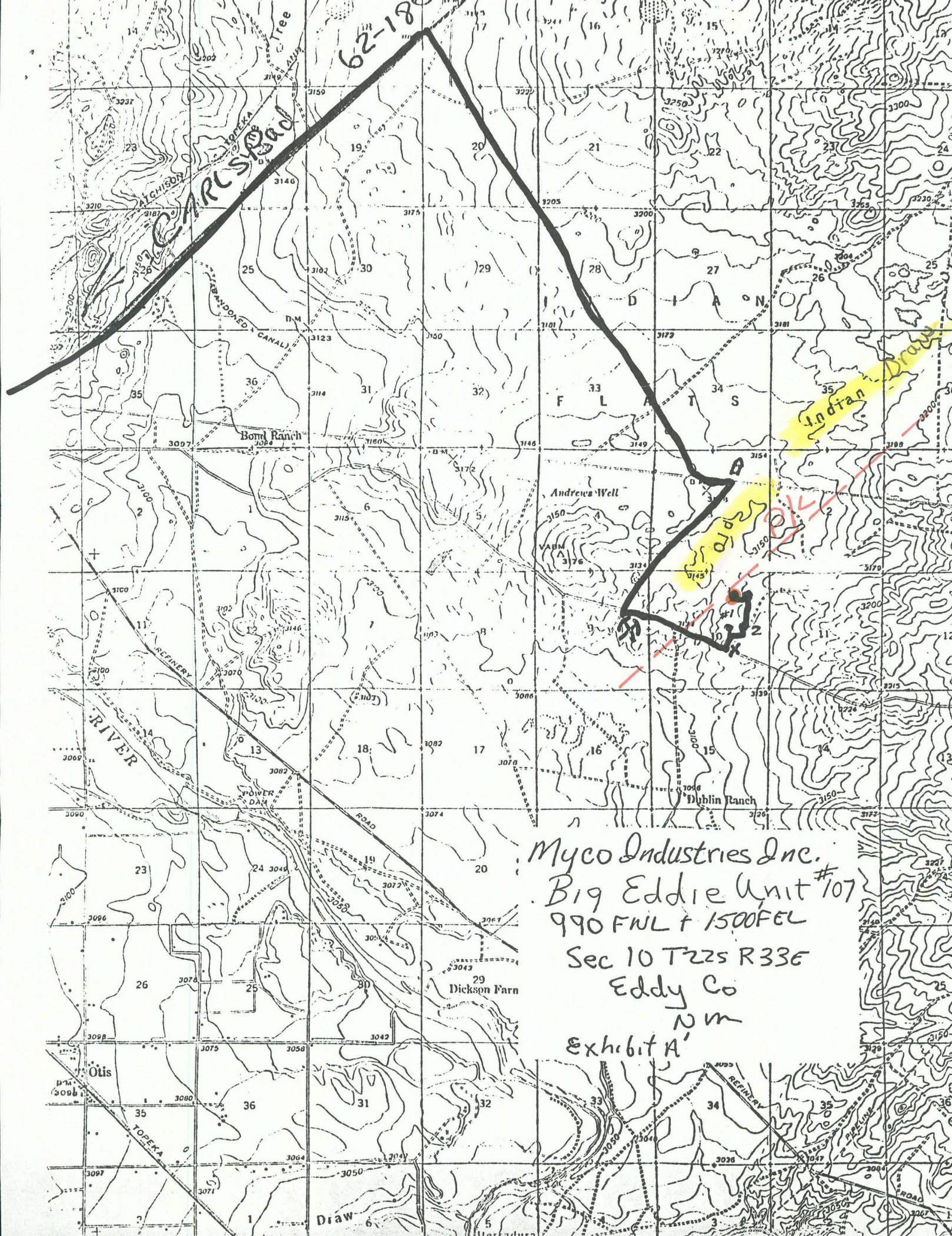
NM PE&LS NO. 5412



060613







Myco Industries Inc.  
Big Eddie Unit #107  
990 FWL + 1500 FEL  
Sec 10 T22S R33E  
Eddy Co  
Nm  
Exhibit A'