

*Release Immediate  
No offsets*

*B4 DC*



*NSL-1988  
RULE-104(FI)*

## ALPHA TWENTY-ONE PRODUCTION COMPANY

POST OFFICE BOX 1206  
JAL, NEW MEXICO 88252

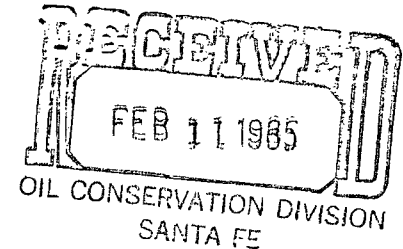
505/395-3056

February 7, 1985

Oil Conservation Division  
P.O. Box 2088  
Santa Fe, NM 87501

ATTN: Mr. Richard L. Stamets, Director

RE: Mike No. 4  
2530' FNL & 1380' FEL,  
Section 32, T-18-S, R-37-E,  
Lea County, New Mexico



*Eunice Monument  
Grayburg San Andres Pool  
Dedicated Acreage-40 acres  
SW/4 NE/4*

Sir:

Due to the unusual topographical conditions that exist on the above captioned proposed wellsite, Alpha Twenty-One Production Company requests administrative approval for an unorthodox location placement.

As shown on the attached copy of an aerial photo map, the 40-acre surface in question is presently largely taken up with cultivated land. The map also shows that Northern Natural Gas and Mid-American Pipeline have pipelines crossing this acreage. From a telephone conversation with Mid-American Pipeline we found that they require a twenty-five foot right-of-way on both sides of their four-inch propane line. This four-inch line lies fairly shallow under the surface which would require us to take extreme caution when drilling a well close to it.

The proposed site has no effect on offsetters as the acreage surrounding the well is also leased and operated by Alpha Twenty-One Production Company. The distance to the closest well, the Mike No. 2, from the proposed Mike No. 4 is approximately 1000 feet. This distance complies with the State Rule 101, C, I, of Acreage and Well Location Requirements for Developmental Wells which requires that no well be closer than 330 feet to any existing well and the 40 acres are contiguous, as required.

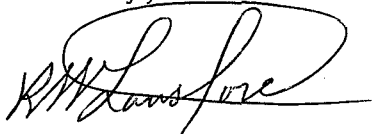
Please find enclosed the originals and two copies of Form C-101, Form C-102, and the aerial photo map mentioned in paragraph two.

Mike No. 4  
-Page 2-

February 7, 1985

Your consideration and administrative approval on the application for unorthodox location in the referenced SW/4 of the NE/4, 2530' FNL & 1380' FEL, Section 32, T-18-S, R-37-E, Lea County, New Mexico would be greatly appreciated. If you desire any further information, please contact me.

Sincerely,

A handwritten signature in dark ink, appearing to read "R.W. Lansford", written over a horizontal line.

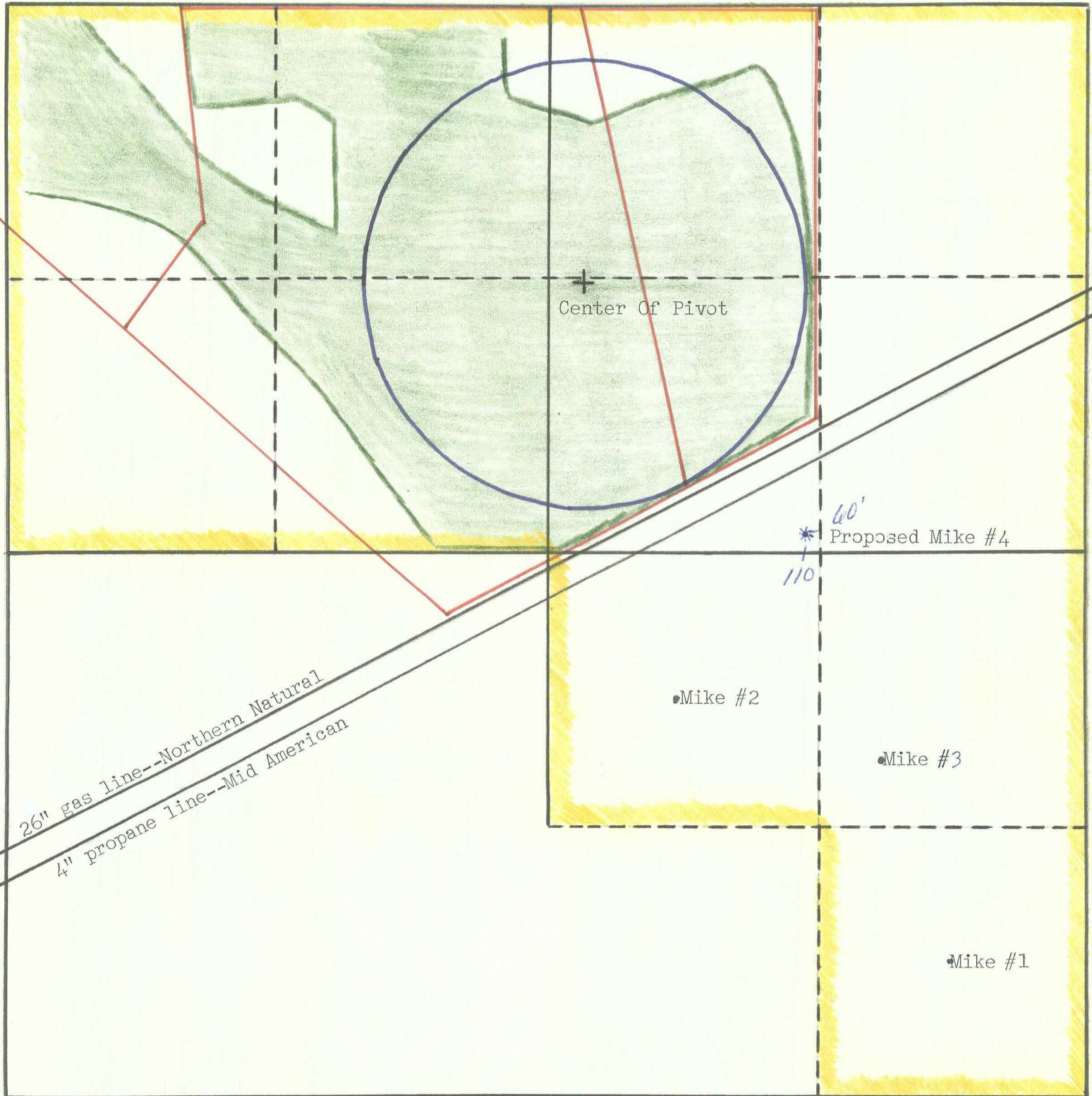
R.W. Lansford,  
Vice President/Energy Resources

RWL/tic  
Enclosures

cc: Oil Conservation Division  
P.O. Box 1980  
Hobbs, NM 88240  
ATTN: Mr. Jerry Sexton

Alpha Twenty-One Production Company  
200 W. Illinois Street, Suite 200  
Midland, TX 79701  
ATTN: Mr. Tom Phipps

SECTION 32-T18S-R37E (Lea County)



GREEN SHADED AREA-----Land currently cultivated  
 YELLOW OUTLINE-----Alpha 21 Production Mike Lease  
 BLUE CIRCLE-----Pivotal sprinkler system  
 RED LINES-----Fence lines