

*Release Immed.  
Waivers in.*

*By Dec*

PH. 505-325-5093

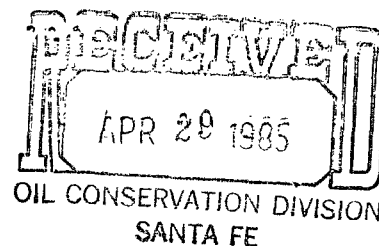
MERRION OIL & GAS CORPORATION

P. O. Box 1017  
FARMINGTON, NEW MEXICO 87499

*NSL-2031  
RULE-104 RE*

April 25, 1985

State of New Mexico  
Energy and Minerals Department  
Oil Conservation Division  
P. O. Box 2088  
Santa Fe, New Mexico 87501



*Deductional - Dakota - 320 acres  
N1/2 Sect 14*

Attention: Mr. David Catanach

Re: Canada Mesa 3-E  
Sec. 14, T24N, R6W  
Rio Arriba Co., New Mexico

*Devils Fork - Gallup 160 acres - N1/4*

Dear Mr. Catanach,

It is our understanding the enclosed application for Non Standard Location on the above referenced well submitted January 2, 1985, was not received by your office. Therefore we have enclosed copies of the original application along with copies of waiver letters submitted by offset acreage holders.

This location was moved East to avoid an archaeological site. We propose to complete the Gallup and Dakota intervals in this well, and although the well is standard for Dakota it is not for Gallup.

Since we will be ready to drill in two to three weeks and all waivers have been submitted, we request you expedite our application.

Sincerely,

MERRION OIL & GAS CORPORATION

A handwritten signature in dark ink, appearing to read "Steve S. Dunn", written over a horizontal line.

Steve S. Dunn, Operations Manager

SSD/am

Enc.

cc: Ernie Busch

MERRION OIL & GAS CORPORATION

P. O. Box 1017  
FARMINGTON, NEW MEXICO 87499

January 2, 1985

State of New Mexico  
Energy and Minerals Department  
Oil Conservation Division  
P. O. Box 2088  
Santa Fe, New Mexico 87501

Re: Canada Mesa 3E  
Sec. 14, T24N, R6W  
Rio Arriba Co., New Mexico

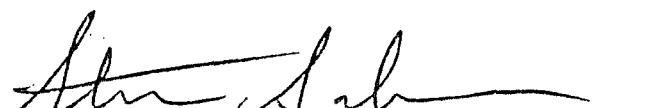
Dear Sir:

The above referred to location is for a well to be drilled to the Dakota Formation. This location is non-standard because of topography. Certified Letters have been sent to the offsetting operators advising them of this location. We hereby request approval of this location for drilling.

Thank you for your assistance in this matter.

Yours truly,

MERRION OIL & GAS CORPORATION

  
Steve S. Dunn, Operations Manager

SSD/am

Enc.

cc: Frank Chavez

MERRION OIL & GAS CORPORATION

P. O. Box 1017  
FARMINGTON, NEW MEXICO 87499

April 3, 1985

Texaco Oil Co. ✓  
P. O. Box 2100  
Denver, Colorado 80201

Re: Canada Mesa 3E  
Sec. 14, T24N, R6W  
Rio Arriba County, New Mexico

Dear Sir:


The enclosed lease plat shows the location of the above proposed well and your lease offsetting it. This location is for a well to be drilled to the Dakota Formation.

The enclosed topographic map also shows the location which will require an unorthodox location approval. We request you advise the New Mexico Oil Conservation Commission if you have no objection to this location.

If you have any questions, please call.

Sincerely yours,

MERRION OIL & GAS CORPORATION

  
Steve S. Dunn, Operations Manager

SSD/am

Enc.

TEXACO U.S.A.  
P. O. Box 2100  
Denver, CO 80201  
4601 DTC Boulevard  
Denver, CO 80237



April 11, 1985

*Canada Mesa 3E*

Unorthodox Well Location  
Canada Mesa No. 3E  
Merrion Oil and Gas Corporation

New Mexico Oil Conservation  
P. O. Box 2088  
Santa Fe, NM 87501

Merrion Oil and Gas Corporation has proposed a well to be drilled for completion in the Dakota formation at the following location:

790' FNL and 1190' FWL  
Section 14-T24N-R6W  
Rio Arriba County, NM

This is to advise that Texaco Inc. has no objection to this well location.

Very truly yours,

SIGNED: T.L. DITMORE

T. L. DITMORE  
Petroleum Engineering Manager

FSH:cub

cc: Merrion Oil and Gas Corporation  
P. O. Box 1017  
Farmington, NM 87499

MERRION OIL & GAS CORPORATION

P. O. Box 1017  
FARMINGTON, NEW MEXICO 87499

April 3, 1985

✓  
Mesa Petroleum Company  
P. O. Box 2009  
Amarillo, Texas 79189-2009

Re: Canada Mesa 3E  
Sec. 14, T24N, R6W  
Rio Arriba County, New Mexico

Dear Sir:


The enclosed lease plat shows the location of the above proposed well and your lease offsetting it. This location is for a well to be drilled to the Dakota Formation.

The enclosed topographic map also shows the location which will require an unorthodox location approval. We request you advise the New Mexico Oil Conservation Commission if you have no objection to this location.

If you have any questions, please call.

Sincerely yours,

MERRION OIL & GAS CORPORATION

  
Steve S. Dunn, Operations Manager

SSD/am

Enc.




April 18, 1985

New Mexico Oil & Gas Conservation  
Commission  
P. O. Box 2088  
Santa Fe, New Mexico 87501

Subject: Merrion Oil & Gas Corporation's Proposed  
Canada Mesa 3E Well  
Township 24 North, Range 6 West  
Section 14: NW $\frac{1}{4}$   
Rio Arriba County, New Mexico  
Offsetting Mesa Lease  
01-06-NM-0876-0001-000-0

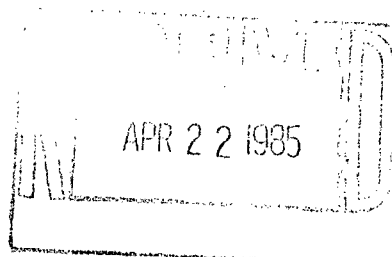
Mesa Petroleum Co., record title owner of the S $\frac{1}{2}$ , Section 14-T24N-R6W, Rio Arriba County, New Mexico, hereby advises you that it has no objection to Merrion Oil & Gas Corporation's proposed unorthodox location being 1190' FWL & 790' FNL, Section 14-T24N-R6W for the proposed Canada Mesa 3E dual Dakota/Gallup test.

Sincerely,

  
R.S. (Joe) Freeman, Jr.  
Division Land Manager

RSF/das

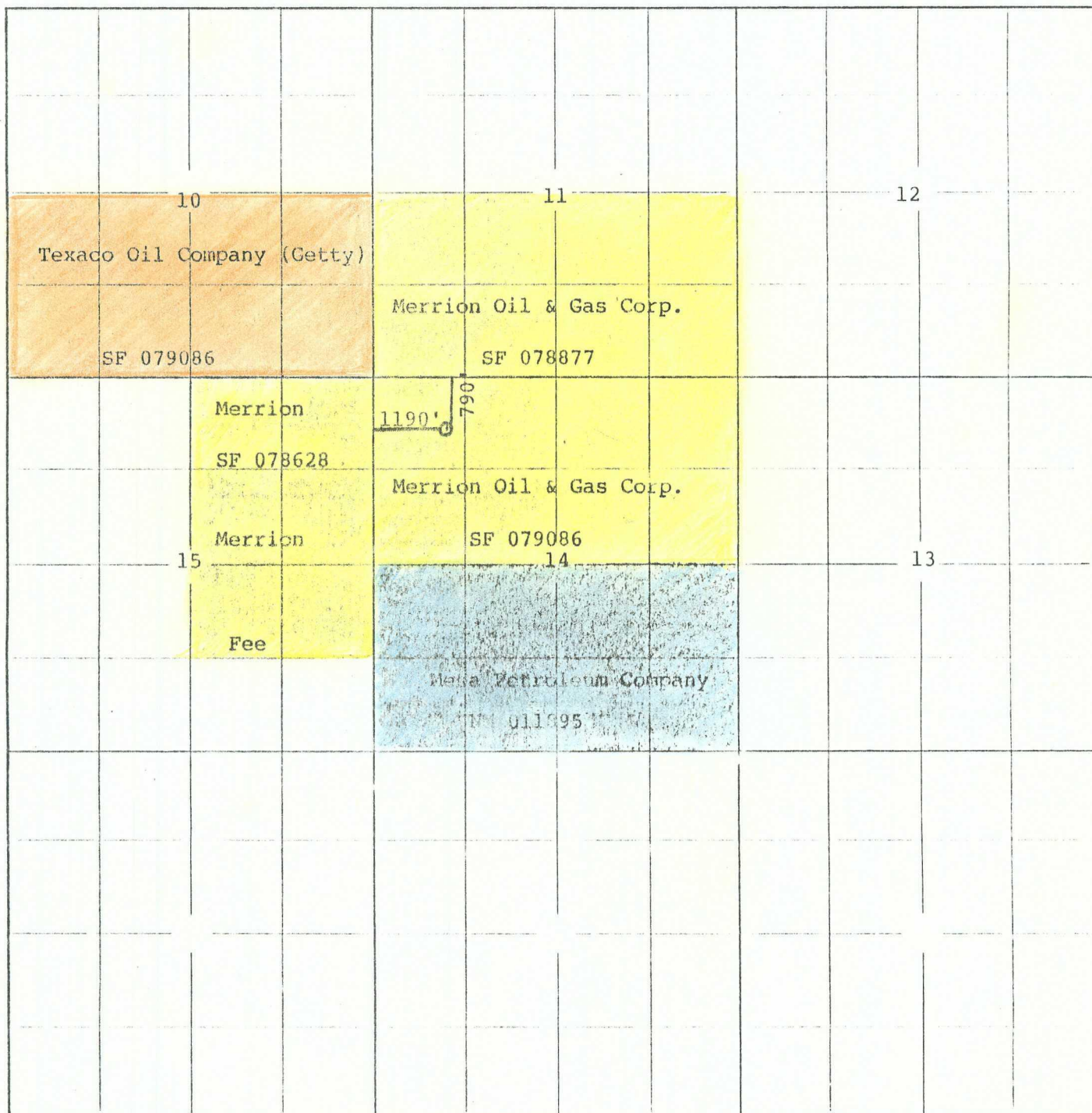
cc: Jeff Yockum, Amarillo  
Steve S. Dunn, Merrion



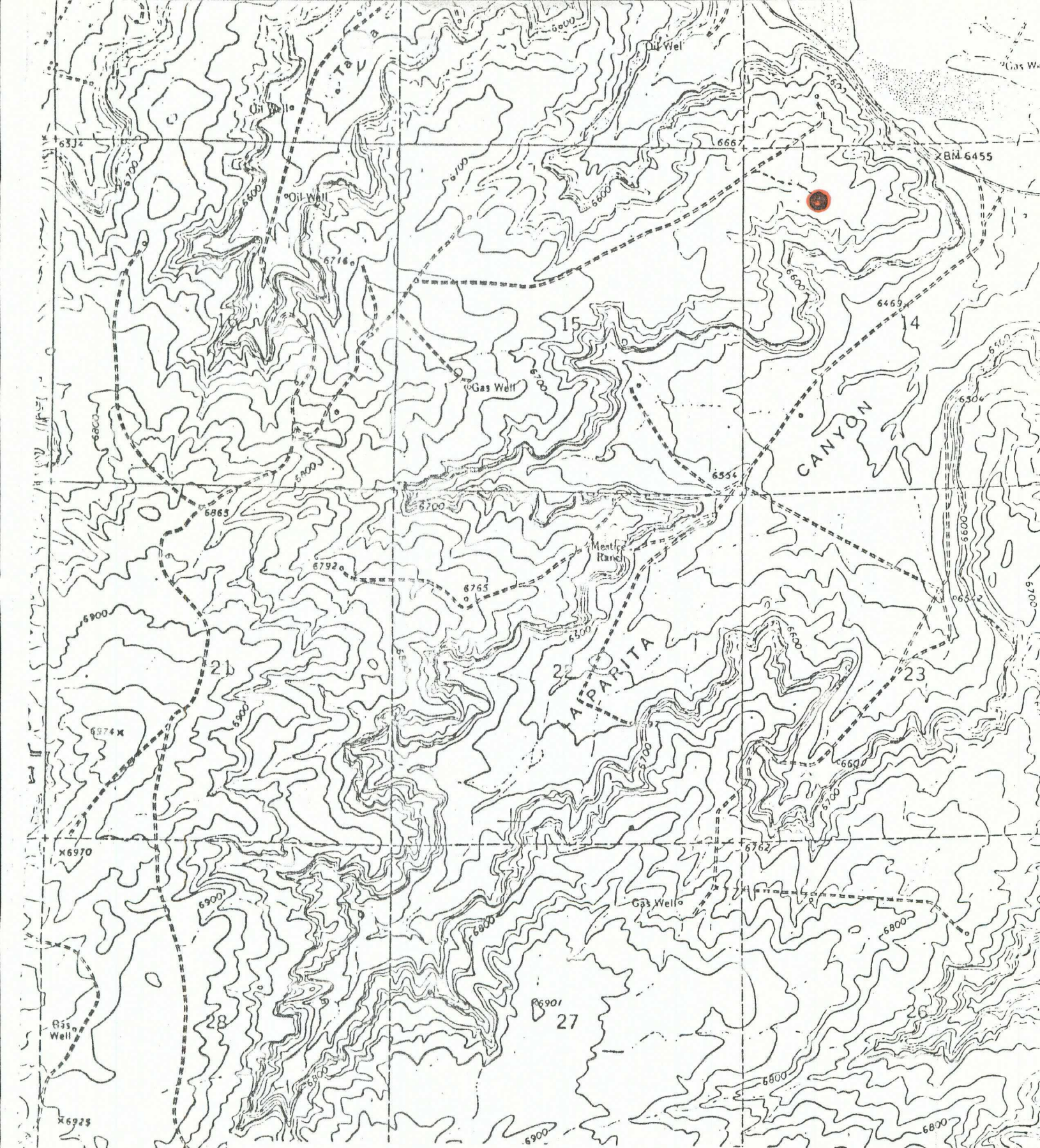
MERRION OIL & GAS CORPORATION

CANADA MESA 3E

TOWNSHIP 24N RANGE 6W COUNTY Rio Arriba STATE New Mexico

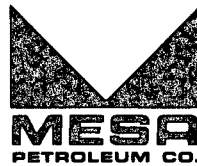






Vicinity Map for  
MERRION OIL & GAS CORP. #3E CANADA MESA  
790'FNL 1190'FWL Sec. 14-T24N-R6W  
RIO ARriba COUNTY, NEW MEXICO





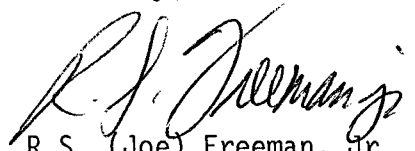
April 18, 1985

New Mexico Oil & Gas Conservation  
Commission  
P. O. Box 2088  
Santa Fe, New Mexico 87501

Subject: Merrion Oil & Gas Corporation's Proposed  
Canada Mesa 3E Well  
Township 24 North, Range 6 West  
Section 14: NW $\frac{1}{4}$   
Rio Arriba County, New Mexico  
Offsetting Mesa Lease  
01-06-NM-0876-0001-000-0

Mesa Petroleum Co., record title owner of the S $\frac{1}{2}$ , Section 14-T24N-R6W, Rio Arriba County, New Mexico, hereby advises you that it has no objection to Merrion Oil & Gas Corporation's proposed unorthodox location being 1190' FWL & 790' FNL, Section 14-T24N-R6W for the proposed Canada Mesa 3E dual Dakota/Gallup test.

Sincerely,

  
R.S. (Joe) Freeman, Jr.  
Division Land Manager

RSF/das

cc: Jeff Yockum, Amarillo  
Steve S. Dunn, Merrion