

Received May 23, 1985

By DRC

PH. 505-325-5093

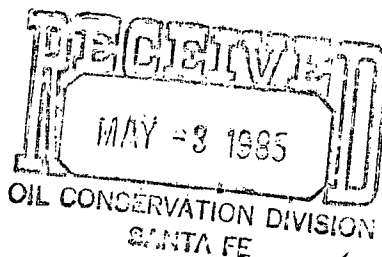
MERRION OIL & GAS CORPORATION

P. O. Box 1017
FARMINGTON, NEW MEXICO 87499

NSL-2053
201E-104 (11)

April 30, 1985

State of New Mexico
Energy and Minerals Department
Oil Conservation Division
P. O. Box 2088
Santa Fe, New Mexico 87501



*NE14 SE14 → 40 acre deduction
wildcat Entrada*

Re: Arena Blanca No. 1
2360' FSL and 1200' FEL
Sec. 36, T20N, R5W
McKinley Co., New Mexico

Dear Sir:

The above referred to location is for a well to be drilled to the Entrada Formation. This location is staked non-standard in order to avoid the Penistaja Wash. Certified Letters have been sent to the offsetting operators advising them of this location. We hereby request approval of this location for drilling.

Thank you for your assistance in this matter.

Yours truly,

MERRION OIL & GAS CORPORATION


Steve S. Dunn, Operations Manager

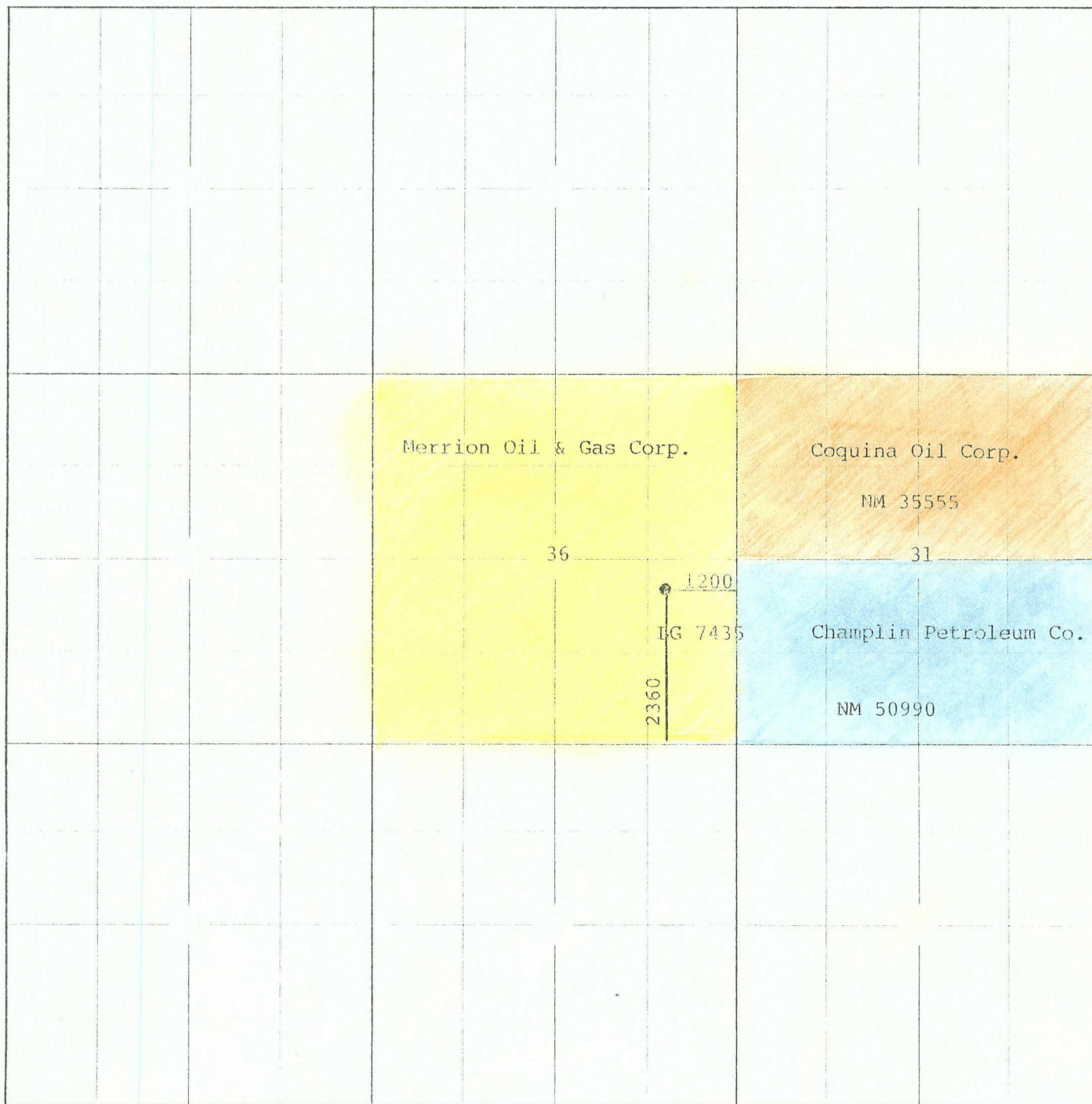
SSD/am

Enc.

MERRION OIL & GAS CORPORATION

Arena Blanca No. 1

TOWNSHIP 20N RANGE 5W COUNTY McKinley STATE New Mexico
5W 4W



NEW MEXICO OIL CONSERVATION COMMISSION
WELL LOCATION AND ACREAGE DEDICATION PLAT

Form C-102
Supersedes C-128
Effective 1-1-65

All distances must be from the outer boundaries of the Section.

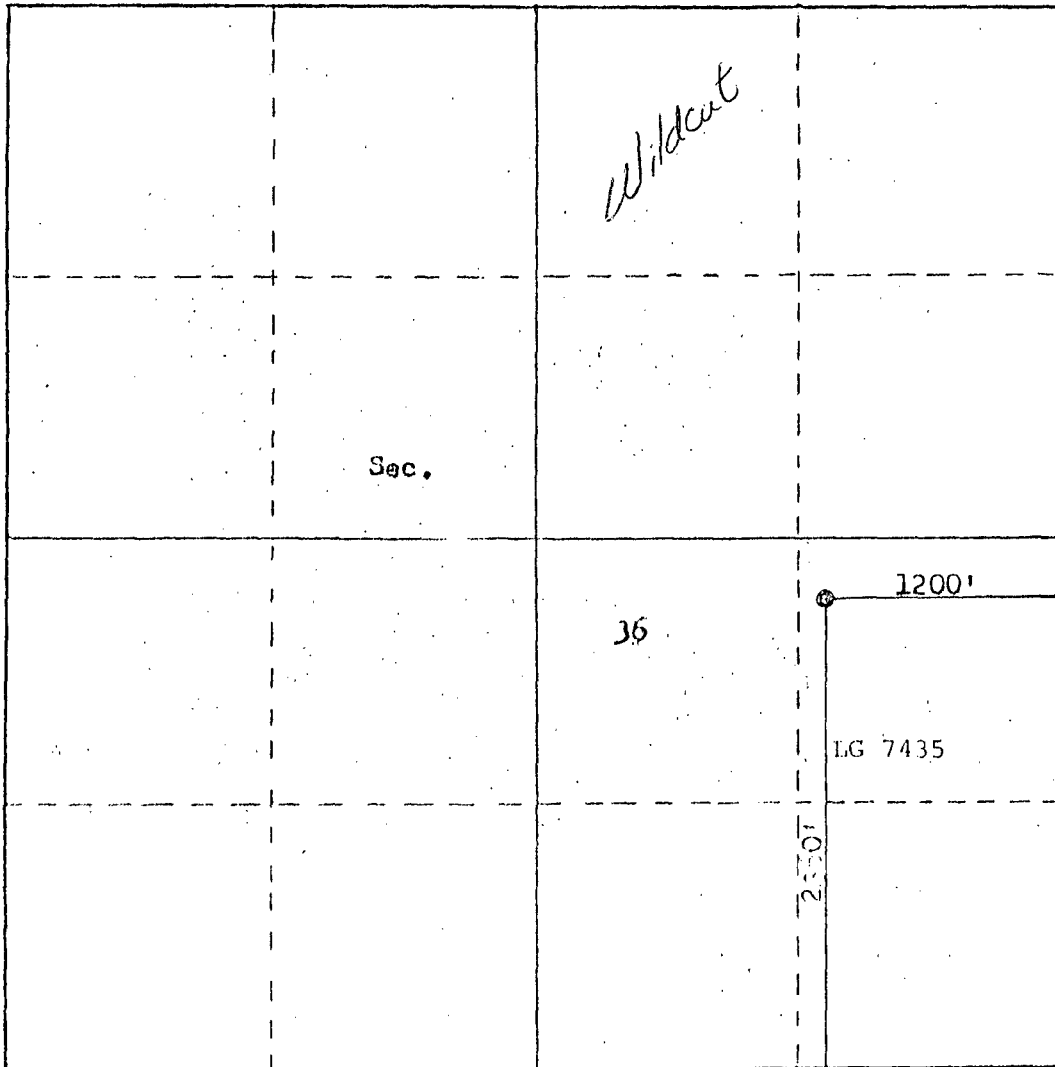
Operator MERRION OIL & GAS CORPORATION			Lease Arena Blanca		Well No. 1
Unit Letter I	Section 36	Township 20N	Range 5W	County McKinley	
Actual Footage Location of Well: 2360 feet from the South line and 1200 feet from the East line					
Ground Level Elev: 6634	Producing Formation Entrada		Pool WC Entrada		Dedicated Acreage: 40 Acres

1. Outline the acreage dedicated to the subject well by colored pencil or hatchure marks on the plat below.
2. If more than one lease is dedicated to the well, outline each and identify the ownership thereof (both as to working interest and royalty).
3. If more than one lease of different ownership is dedicated to the well, have the interests of all owners been consolidated by communitization, unitization, force-pooling, etc?

☐ Yes ☐ No If answer is "yes," type of consolidation _____

If answer is "no," list the owners and tract descriptions which have actually been consolidated. (Use reverse side of this form if necessary.) _____

No allowable will be assigned to the well until all interests have been consolidated (by communitization, unitization, forced-pooling, or otherwise) or until a non-standard unit, eliminating such interests, has been approved by the Commission.



CERTIFICATION

I hereby certify that the information contained herein is true and complete to the best of my knowledge and belief.

Steve S. Dunn

Name
Steve S. Dunn

Position
Operations Manager

Company
Merrion Oil & Gas Corp.

Date
4/15/85

I hereby certify that the well location shown on this plat was plotted from field notes of actual surveys made by me or under my supervision, and that the same is true and correct to the best of my knowledge and belief.

Date Surveyed

April 12, 1985

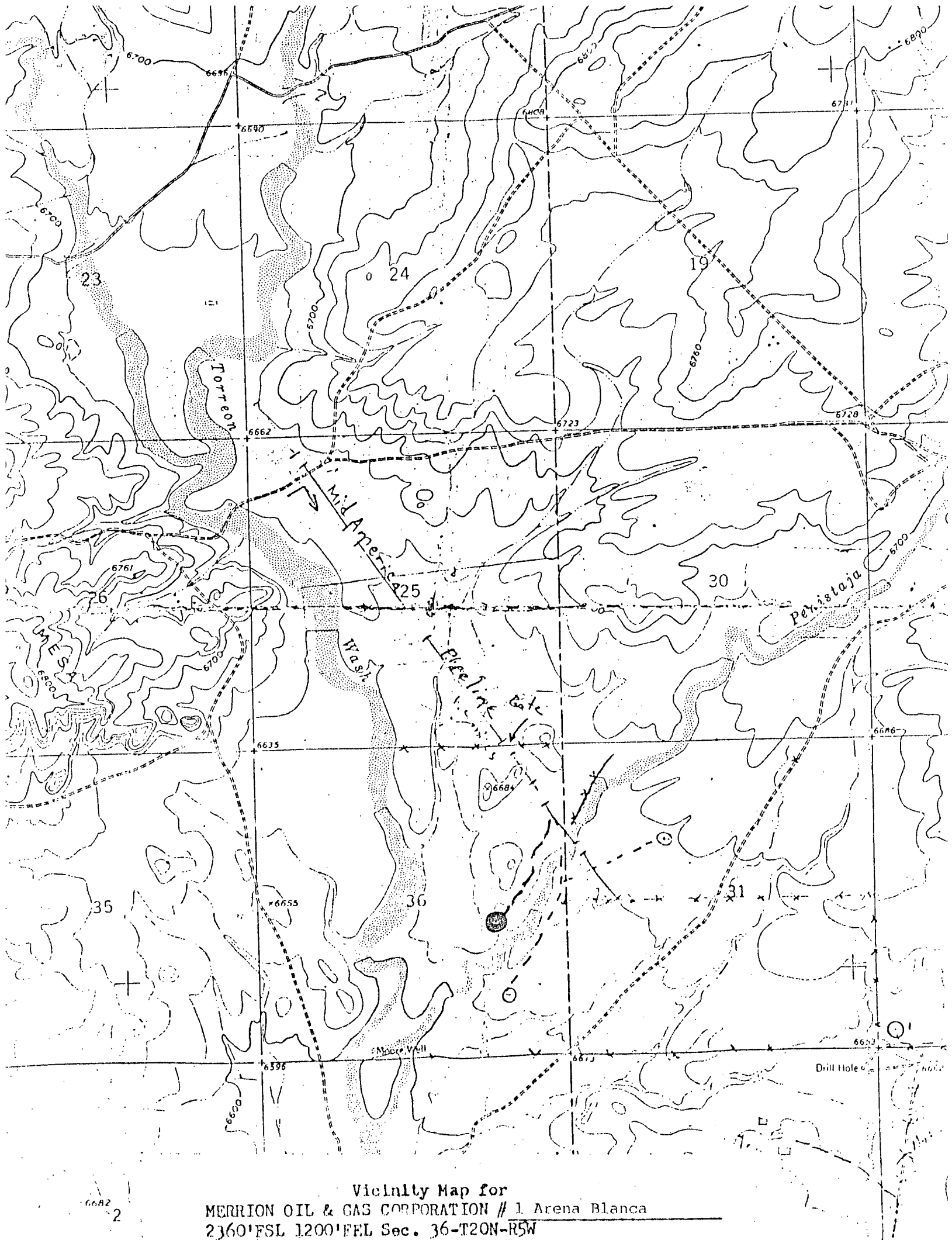
Registered Professional Engineer and Land Surveyor

Fred B. Kerr Jr.
Fred B. Kerr Jr.

Certificate No. **2222**

3950

Scale: 1"=1000'



Vicinity Map for
MERRION OIL & GAS CORPORATION # 1 Arena Blanca
2360' FSL 1200' FEL Sec. 36-T20N-R5W



STATE OF NEW MEXICO
ENERGY AND MINERALS DEPARTMENT
OIL CONSERVATION DIVISION
AZTEC DISTRICT OFFICE

1000 RIO BRAZOS ROAD
AZTEC, NEW MEXICO 87410
(505) 334-6178

OIL CONSERVATION DIVISION
BOX 2088
SANTA FE, NEW MEXICO 87501

DATE 5-2-85

RE: Proposed MC _____
Proposed DHC _____
Proposed NSL X _____
Proposed SWD _____
Proposed WFX _____
Proposed PMX _____

RECEIVED
MAY 10 1985
OIL CONSERVATION DIVISION
SANTA FE

Gentlemen:

I have examined the application dated 5-7-85
for the Merrion Oil & Gas Co. Arena Blanca #1 I-36-20N-5W
Operator Lease and Well No. Unit, S-T-R

and my recommendations are as follows:

Approve

Yours truly,

E. Busch