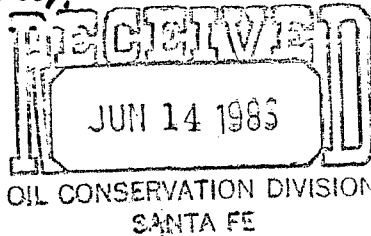


Release July 4, 1985

B4 DEC



CITIES SERVICE OIL AND GAS CORPORATION  
P. O. BOX 1919 MIDLAND, TEXAS 79702

(915) 685-5600

June 12, 1985

NSL-2077  
RULE-104 F(I)

Mr. R. L. Stamets, Director  
New Mexico Oil Conservation Division  
P.O. Box 2088  
Santa Fe, New Mexico 87501

*Wildcat Marrow*

RE: Request for Administrative Approval for an  
Unorthodox Location for Cities Service Oil  
and Gas Corporation's Federal AC Well No. 1,  
Located 1797'FSL & 1525'FWL of Sec. 35-T23S-  
R23E, Eddy County, New Mexico

Dear Mr. Stamets:

*320 Acre dedication  
W/2 Section 35*

Cities Service Oil and Gas Corporation respectfully requests Administrative Approval for an unorthodox location for the above captioned well. The subject drilling location is not an orthodox location as per State requirements for the dedicated tract, the W/2 of Sec. 35-T23S-R23E, Eddy County, New Mexico. The location was staked at this location, 1797'FSL & 1525'FWL of Sec. 35, because of the extremely rugged and mountainous terrain at the orthodox location, 1980'FSL & 1980'FWL of Sec. 35, and to minimize surface disturbance. Topography would not allow the well to be drilled at the orthodox location. Also, please be advised that complete sets of this filing have been mailed to the offset operators, as shown on the attached lease plat, by certified mail.

Thank you for your consideration of our request.

Sincerely,

CITIES SERVICE OIL AND GAS CORPORATION

*Elmer W. Startz*

Elmer W. Startz  
Region Operations Manager - Production  
Southwest Region  
E & P Division

EWS:JME:jme  
attachments

cc: New Mexico Oil Conservation Division  
District 2 Office  
P.O. Drawer DD  
Artesia, New Mexico 88210

UNITED STATES  
DEPARTMENT OF THE INTERIOR  
BUREAU OF LAND MANAGEMENT

APPLICATION FOR PERMIT TO DRILL, DEEPEN, OR PLUG BACK

1a. TYPE OF WORK

DRILL ☒

DEEPEN ☐

PLUG BACK ☐

b. TYPE OF WELL

OIL  
WELL ☐

GAS  
WELL ☒

OTHER

SINGLE  
ZONE ☒

MULTIPLE  
ZONE ☐

2. NAME OF OPERATOR

Cities Service Oil and Gas Corporation

3. ADDRESS OF OPERATOR

P.O. Box 1919 - Midland, Texas 79702

4. LOCATION OF WELL (Report location clearly and in accordance with any State requirements.\*)

At surface

1797'FSL & 1525'FWL

At proposed prod. zone

14. DISTANCE IN MILES AND DIRECTION FROM NEAREST TOWN OR POST OFFICE\*

11 miles Northwest from White City, New Mexico

15. DISTANCE FROM PROPOSED\*

LOCATION TO NEAREST  
PROPERTY OR LEASE LINE, FT.  
(Also to nearest drlg. unit line, if any)

1525'

16. NO. OF ACRES IN LEASE

320

17. NO. OF ACRES ASSIGNED  
TO THIS WELL

320

18. DISTANCE FROM PROPOSED LOCATION\*  
TO NEAREST WELL, DRILLING, COMPLETED,  
OR APPLIED FOR, ON THIS LEASE, FT.

N/A

19. PROPOSED DEPTH

11,000'

20. ROTARY OR CABLE TOOLS

Rotary

21. ELEVATIONS (Show whether DF, RT, GR, etc.)

4416'GR

22. APPROX. DATE WORK WILL START\*

After permit approval

23.

PROPOSED CASING AND CEMENTING PROGRAM

SIZE OF HOLE	SIZE OF CASING	WEIGHT PER FOOT	SETTING DEPTH	QUANTITY OF CEMENT
17-1/2"	13-3/8"	48#	350'	500 sacks (Circulated)
12-1/4"	8-5/8"	24#	2500'	1150 sacks (Circulated)
7-7/8"	5-1/2"	17#	11000'	1500 sacks (TOC @ 2000')

It is proposed to drill this well to a T.D. of 11,000' and test the Morrow Formation. The blowout prevention program is as follows:

1. One set of blind rams.
2. One set of drill pipe rams.
3. One Hydril.

The acreage dedicated to this well has not been assigned to any gas purchaser.

IN ABOVE SPACE DESCRIBE PROPOSED PROGRAM: If proposal is to deepen or plug back, give data on present productive zone and proposed new productive zone. If proposal is to drill or deepen directionally, give pertinent data on subsurface locations and measured and true vertical depths. Give blowout prevention program, if any.

24.

SIGNED

*E. L. S. S. S.*

TITLE

Reg. Opr. Mgr. - Prod.

DATE

4-12-85

(This space for Federal or State office use)

PERMIT NO.

APPROVED BY: *Charles L. S. S.*

APPROVAL DATE

AREA MANAGER  
CARLSBAD RESOURCE AREA

DATE

5-6-85

Subject to  
Like Approval  
by State

\*See Instructions On Reverse Side

APPROVAL SUBJECT TO  
GENERAL REQUIREMENTS AND  
SPECIAL STIPULATIONS

NEW MEXICO OIL CONSERVATION COMMISSION  
WELL LOCATION AND ACREAGE DEDICATION PLAT

Form C-102  
Supersedes C-128  
Effective 1-1-65

All distances must be from the outer boundaries of the Section.

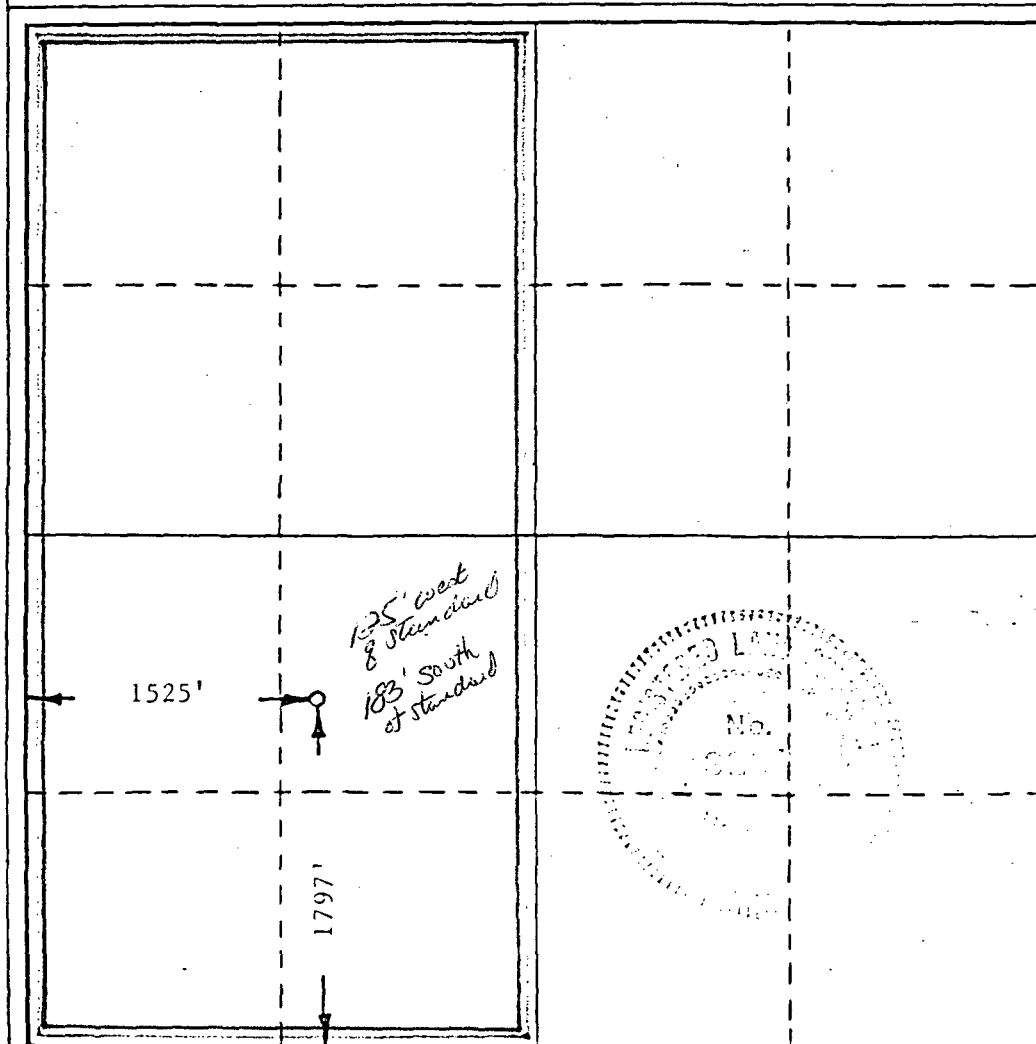
Operator Cities Service Oil & Gas Corp.			Lease Federal AC		Well No. 1
Unit Letter K	Section 35	Township 23-South	Range 23-East	County Eddy	
Actual Footage Location of Well:					
1797 feet from the South line and		1525 feet from the West line			
Ground Level Elev. 4415.7'	Producing Formation Morrow	Pool Wildcat	Dedicated Acreage: 320 Acres		

1. Outline the acreage dedicated to the subject well by colored pencil or hachure marks on the plat below.
2. If more than one lease is dedicated to the well, outline each and identify the ownership thereof (both as to working interest and royalty).
3. If more than one lease of different ownership is dedicated to the well, have the interests of all owners been consolidated by communitization, unitization, force-pooling, etc?

☐ Yes ☐ No If answer is "yes," type of consolidation \_\_\_\_\_

If answer is "no," list the owners and tract descriptions which have actually been consolidated. (Use reverse side of this form if necessary.) \_\_\_\_\_

No allowable will be assigned to the well until all interests have been consolidated (by communitization, unitization, forced-pooling, or otherwise) or until a non-standard unit, eliminating such interests, has been approved by the Commission.



CERTIFICATION

I hereby certify that the information contained herein is true and complete to the best of my knowledge and belief.

Name  
*Elmer Startz*  
Position  
Reg. Opr. Mgr. - Prod.

Company  
Cities Service O&G Corp.

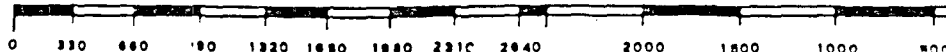
Date  
April 12, 1985

I hereby certify that the well location shown on this plat was plotted from field notes of actual surveys made by me or under my supervision, and that the same is true and correct to the best of my knowledge and belief.

Date Surveyed  
April 11, 1985

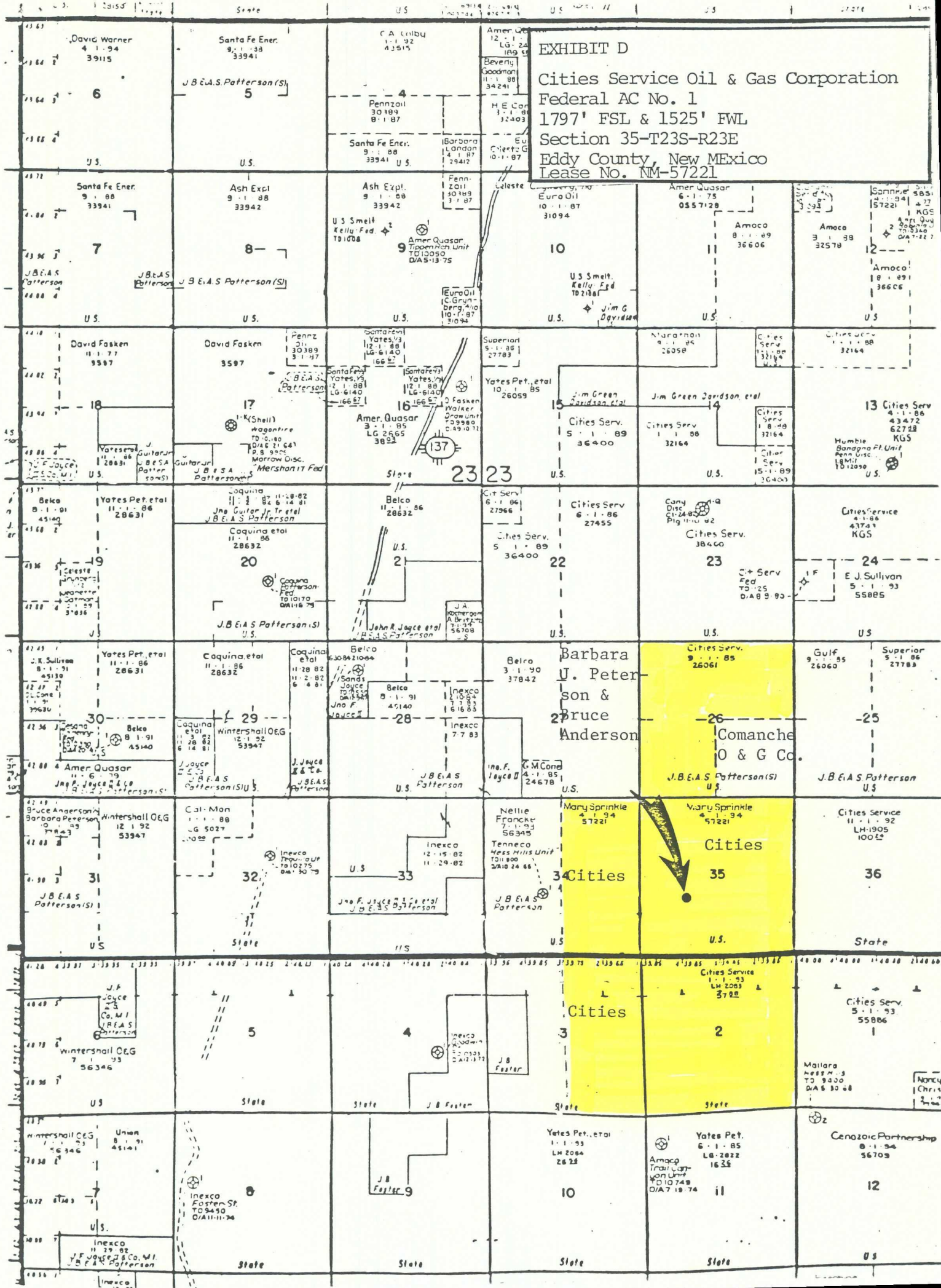
Registered Professional Engineer and/or Land Surveyor

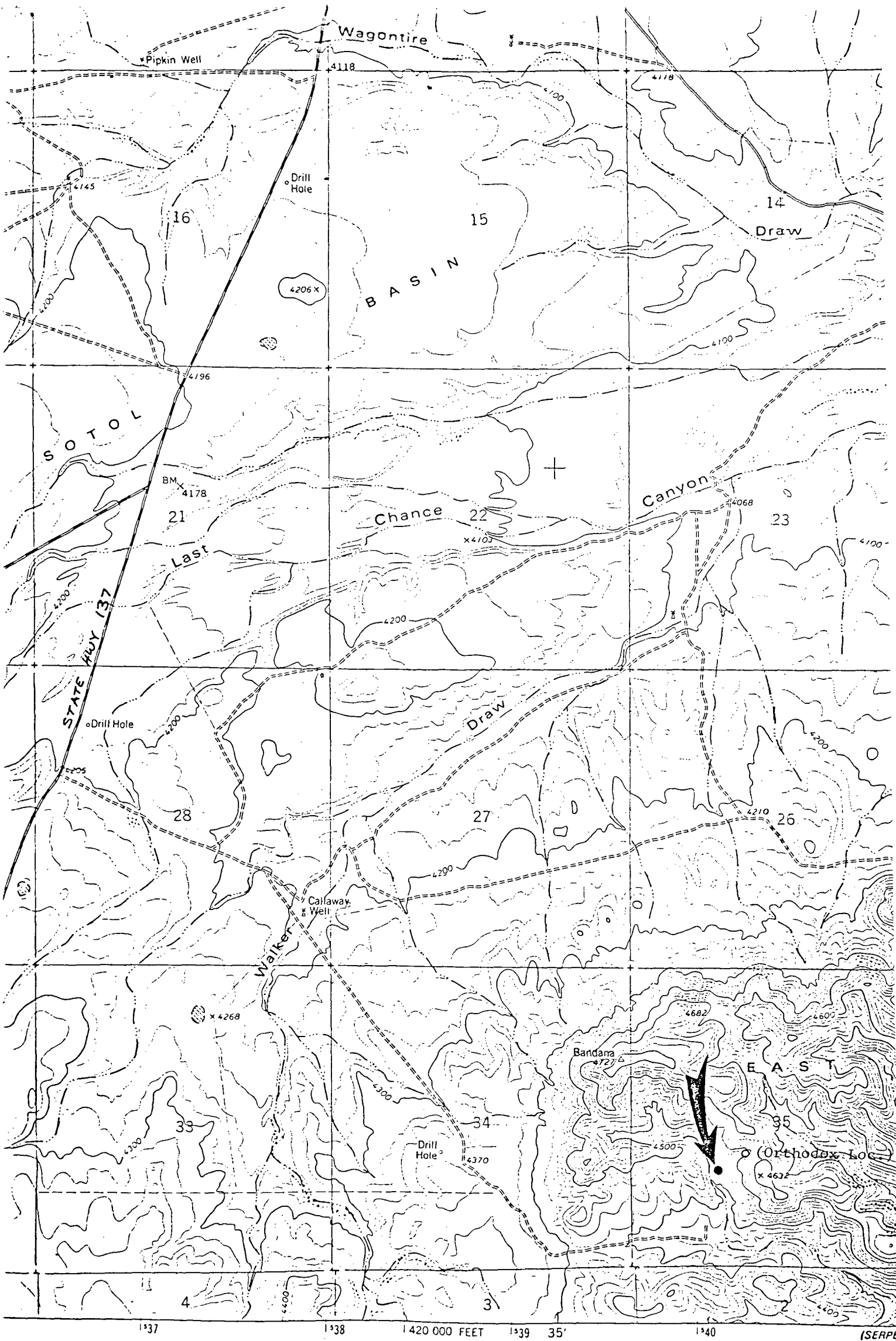
*Ronald J. Eidson*  
Certificate No. JOHN W. WEST, 676  
RONALD J. EIDSON, 3239



# EXHIBIT D

Cities Service Oil & Gas Corporation  
Federal AC No. 1  
1797' FSL & 1525' FWL  
Section 35-T23S-R23E  
Eddy County, New Mexico  
Lease No. NM-57221





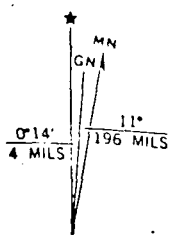
ublished by the Geological Survey

1A

methods from aerial  
d checked 1974. Map edited 1978

1 ticks: New Mexico  
ransverse Mercator)  
se Mercator grid ticks,  
North American datum

selected fence lines

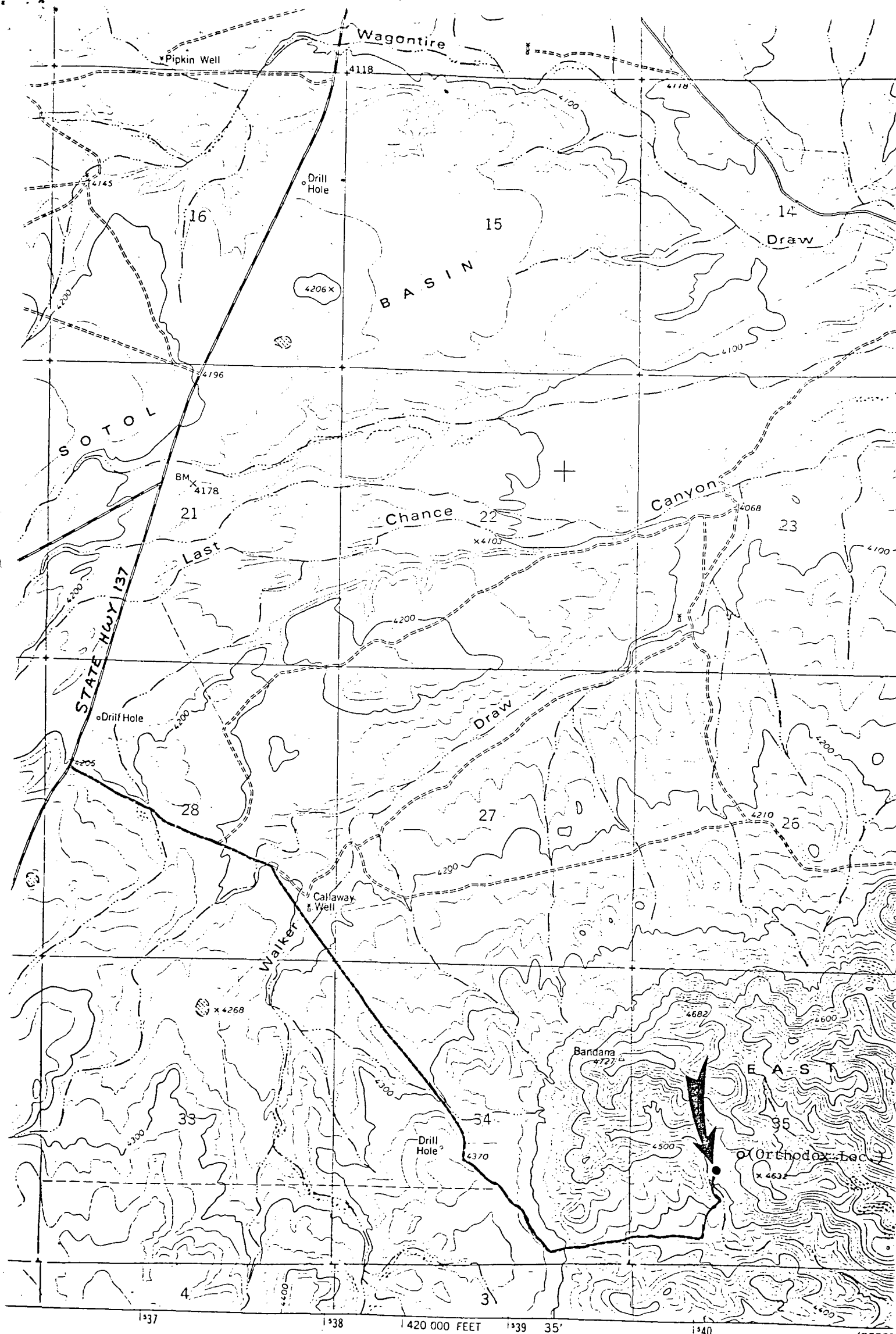


UTM GRID AND 1978 MAGNETIC NORTH  
DECLINATION AT CENTER OF SHEET

# EXHIBIT B

Cities Service Oil & Gas Corporation  
Federal AC No. 1  
Section 35-T23S-R23E  
Eddy County, New Mexico  
Lease No. NM-57221





Published by the Geological Survey  
 Methods from aerial  
 checked 1974. Map edited 1978  
 ticks: New Mexico  
 (transverse Mercator)  
 use Mercator grid ticks,  
 North American datum  
 selected fence lines

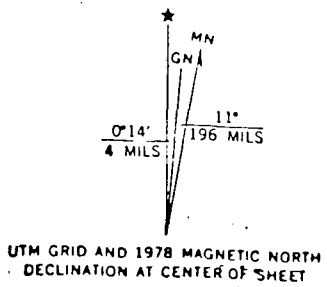
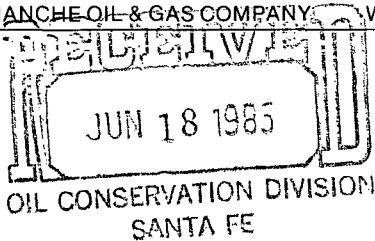


EXHIBIT C  
 Cities Service Oil & Gas Corporation  
 Federal AC No. 1  
 1797' FSL & 1525' FWL  
 Section 35-T23S-R23E  
 Eddy County, New Mexico  
 Lease No. NM-57221

# cog COMANCHE

COMANCHE OIL & GAS COMPANY, WESTERN BLDG. - SUITE 101 1031 ANDREWS HWY. MIDLAND, TX 79701 915 699-5104



June 14, 1985

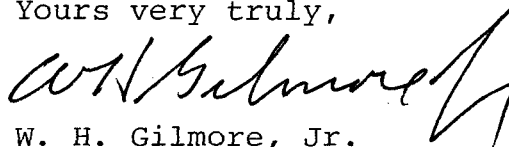
Mr. R. L. Stamets, Director  
New Mexico Oil Conservation Division  
P. O. Box 2088  
Santa Fe, New Mexico 87501

Re: Request for Administrative Approval  
for an Unorthodox Location for Cities  
Service Oil and Gas Corporation's  
Federal AC Well No. 1, Located  
1797' FSL & 1525' FWL of Sec. 35-T23S-  
R23E, Eddy County, New Mexico

Dear Mr. Stamets:

Please be advised that Comanche Oil & Gas Company has  
no objection to the Approval for the Unorthodox Location  
requested by Cities Service Oil and Gas Corporation for the  
captioned well.

Yours very truly,



W. H. Gilmore, Jr.  
Managing Partner

WHGjr:RB

CC: New Mexico Oil Conservation Division  
District 2 Office  
P. O. Drawer DD  
Artesia, New Mexico 88210