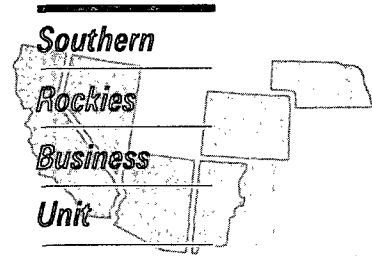


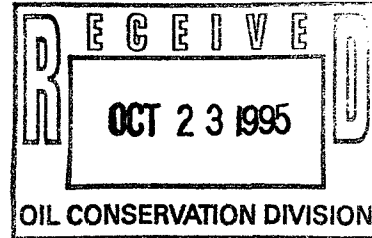


October 19, 1995



Mr. William J. LeMay, Director  
New Mexico Oil Conservation Division  
2040 S. Pacheco Street  
P.O. Box 2088  
Santa Fe, NM 87505

Application For Unorthodox Location  
Sanchez Gas Com C#1  
750 Feet FNL & 660 Feet FEL  
Unit A Section 28-T29N-R10W  
Basin Fruitland Coal Gas Pool  
San Juan County, New Mexico



Amoco Production Company hereby requests administrative approval for an unorthodox well location for the Sanchez Gas Com C #1 well in the Basin Fruitland Coal Gas Pool. Amoco plans to recomplete this well from the Mesaverde formation to the Fruitland formation. This recompletion in the Fruitland will be unorthodox as was the Mesaverde completion. This well was originally drilled at an orthodox location in the Gallup which is unorthodox for both the Mesaverde and the Fruitland.

A copy of this application will be submitted to the offset operators by certified mail with a request that they furnish your Santa Fe office with a Waiver of Objection, and return one copy to this office. Attached are plats showing the location of the well, offset operators, and all wells drilled in the area.

Pamela W. Staley

Attachments

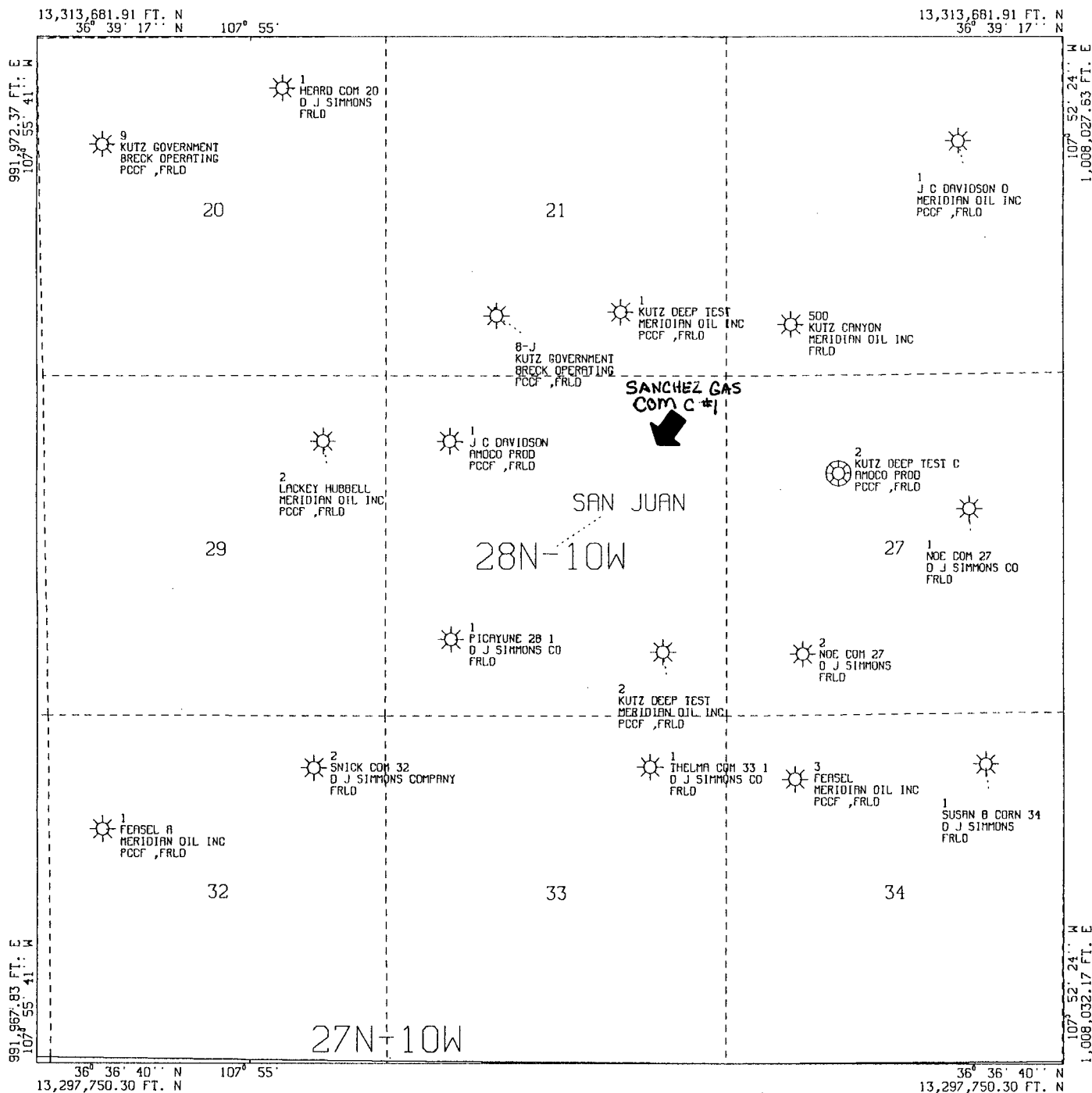
cc: Steve Webb  
Gail Jefferson  
Well File  
Proration Files

WAIVER

\_\_\_\_\_ hereby waives objection to Amoco's application for an unorthodox well location for the Sanchez Gas Com C #1 well described above.

By: \_\_\_\_\_

Date: \_\_\_\_\_



All geological and geophysical data, including the interpretation thereof, appearing on this map is the private and confidential property of Amoco Production Company. The publication or reproduction thereof without the written permission of said Company is strictly prohibited.

AMOCO PRODUCTION COMPANY  
PLAT MAP  
Sanchez Gas Com C 1  
Fruitland Formation

SCALE 1 IN. = 2,000 FT. OCT 18, 1995

HORIZONTAL DATUM NAD27

POLYCONIC CENTRAL MERIDIAN - 107° 54' 2" W LON  
SPHEROID - 6

DWS10262--RUN#95291114509

District I  
PO Box 1980, Hobbs, NM 88241-1980  
District II  
811 South First, Artesia, NM 88210  
District III  
1000 Rio Brazos Rd., Aztec, NM 87410  
District IV  
2040 South Pacheco, Santa Fe, NM 87505

State of New Mexico  
Energy, Minerals & Natural Resources Department

OIL CONSERVATION DIVISION  
2040 South Pacheco  
Santa Fe, NM 87505

Form C-102  
Revised October 18, 1994  
Instructions on back  
Submit to Appropriate District Office  
State Lease - 4 Copies  
Fee Lease - 3 Copies

☐ AMENDED REPORT

WELL LOCATION AND ACREAGE DEDICATION PLAT

<sup>1</sup> API Number 3004525618	<sup>2</sup> Pool Code 71629	<sup>3</sup> Pool Name Basin Fruitland Coals
<sup>4</sup> Property Code 001019	<sup>5</sup> Property Name Sanchez Gas Com C #1	<sup>6</sup> Well Number #1
<sup>7</sup> OGRID No. 000778	<sup>8</sup> Operator Name Amoco Production Company	<sup>9</sup> Elevation 5490 GL

<sup>10</sup> Surface Location

UL or lot no. A	Section 28	Township 29N	Range 10W	Lot Idn	Feet from the 750	North/South line North	Feet from the 660	East/West line East	County San Juan
--------------------	---------------	-----------------	--------------	---------	----------------------	---------------------------	----------------------	------------------------	--------------------

<sup>11</sup> Bottom Hole Location If Different From Surface

UL or lot no.	Section	Township	Range	Lot Idn	Feet from the	North/South line	Feet from the	East/West line	County
---------------	---------	----------	-------	---------	---------------	------------------	---------------	----------------	--------

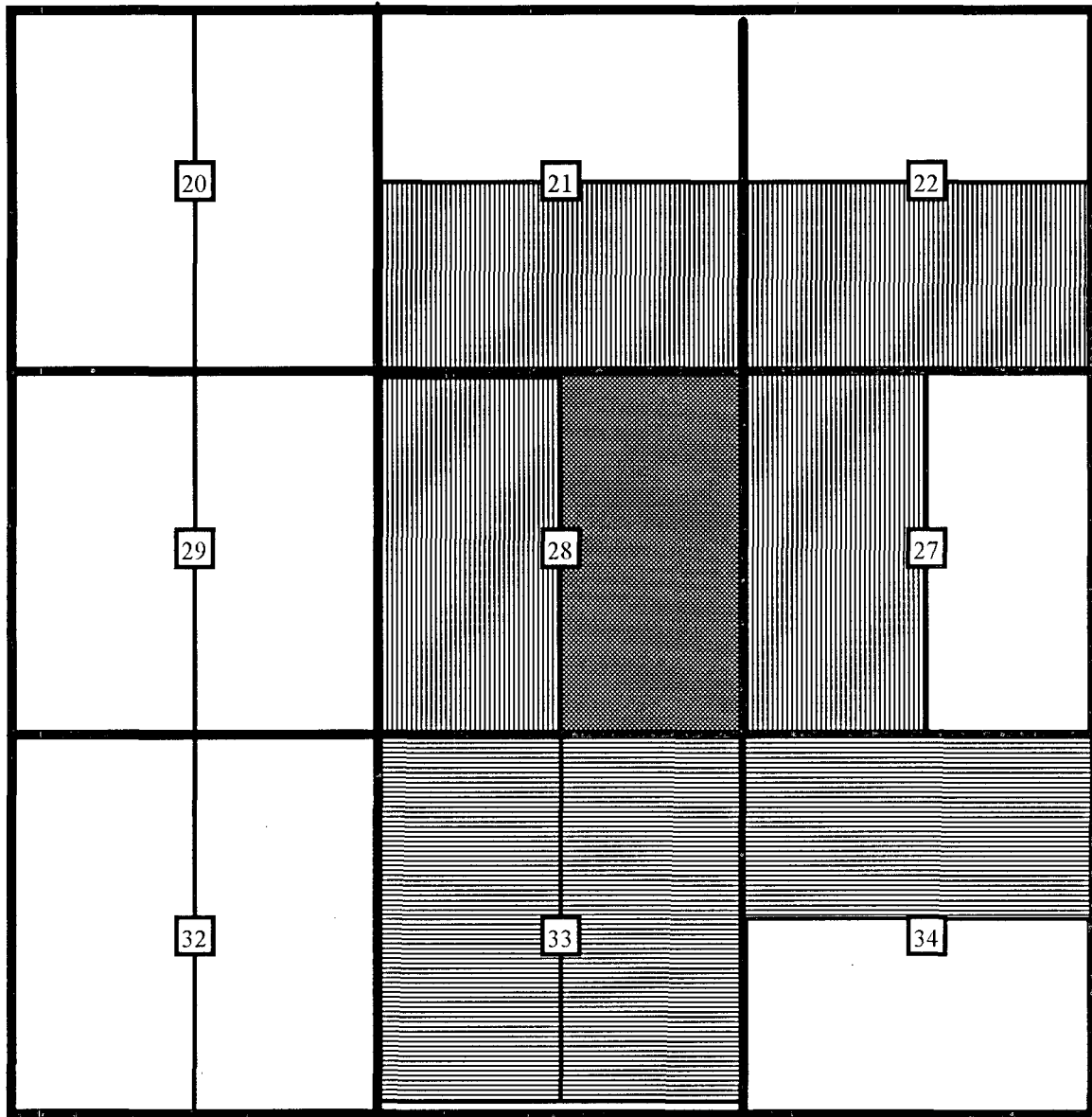
<sup>12</sup> Dedicated Acres 320	<sup>13</sup> Joint or Infill	<sup>14</sup> Consolidation Code	<sup>15</sup> Order No.
--------------------------------------	-------------------------------	----------------------------------	-------------------------

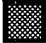


NO ALLOWABLE WILL BE ASSIGNED TO THIS COMPLETION UNTIL ALL INTERESTS HAVE BEEN CONSOLIDATED  
OR A NON-STANDARD UNIT HAS BEEN APPROVED BY THE DIVISION

16				750' 660'	<sup>17</sup> OPERATOR CERTIFICATION I hereby certify that the information contained herein is true and complete to the best of my knowledge and belief  Gail M. Jefferson Signature Gail M. Jefferson Printed Name Sr. Admin. Staff Asst. Title 10/16/95 Date
					<sup>18</sup> SURVEYOR CERTIFICATION I hereby certify that the well location shown on this plat was plotted from field notes of actual surveys made by me or under my supervision, and that the same is true and correct to the best of my belief.  February 24, 1983 Date of Survey Signature and Seal of Professional Surveyer:  3950 Certificate Number

AMOCO PRODUCTION COMPANY OFFSET OPERATOR PLAT

SANCHEZ GAS COM C#1  
750' FNL, 660' FEL  
Unit A Section 28-T29N-R10W  
Basin Fruitland Coal Gas Pool



-  SPACING UNIT TO BE DOWNHOLE COMMINGLED
-  SG INTERESTS I LTD.
-  MERIDIAN OIL, INC

**OFFSET OPERATORS ADDRESSES**  
**SANCHEZ GAS COM C #1**

**1** Meridian Oil, Inc.  
P.O. Box 4289  
Farmington, NM 87499

**2** S G Interest I Ltd.  
811 Dallas Suite 1505  
Houston, Texas 77002

CMD :  
OG5SECT

ONGARD  
INQUIRE LAND BY SECTION

11/07/95 19:53:45  
OGOMES -EMFS  
PAGE NO: 1

Sec : 28 Twp : 29N Rng : 10W Section Type : NORMAL

D 40.00  Fee owned	C 40.00  Fee owned A A	B 40.00  Fee owned	A 40.00  Fee owned A A
E 40.00  Fee owned A A	F 40.00  Fee owned	G 40.00  Fee owned A A	H 40.00  Fee owned

PF01 HELP  
PF07 BKWD

PF02  
PF08 FWD

PF03 EXIT  
PF09 PRINT

PF04 GoTo  
PF10 SDIV

PF05  
PF11

PF06  
PF12

CMD :  
OG5SECT

ONGARD  
INQUIRE LAND BY SECTION

11/07/95 19:53:51  
OGOMES -EMFS  
PAGE NO: 2

Sec : 28 Twp : 29N Rng : 10W Section Type : NORMAL

L 40.00  Fee owned	K 40.00  Fee owned A	J 40.00  Fee owned A A	I 40.00  Fee owned A
M 40.00  Fee owned A A	N 40.00  Fee owned A	O 40.00  Fee owned	P 40.00  Fee owned A

PF01 HELP  
PF07 BKWD

PF02  
PF08 FWD

PF03 EXIT  
PF09 PRINT

PF04 GoTo  
PF10 SDIV

PF05  
PF11

PF06  
PF12