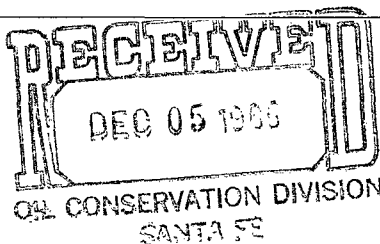


Release 1-28-86



By DEC

Donald W. Johnson
Division Manager
Production Department
Hobbs Division
North American Production



Conoco Inc.
P.O. Box 460
726 East Michigan
Hobbs, NM 88240
(505) 393-4141

November 27, 1985

State of New Mexico
Energy and Minerals Department
Oil Conservation Division
P. O. Box 2088
Santa Fe, NM 87501

Attention Mr. Dick Stamets, Director

Gentlemen:

Amendment to Approved Unorthodox Location - Meyer A-1 No. 18, 1780' FSL and 2030' FWL of Section 8, T-21S, R-36E, Lea County, New Mexico. Eumont Gas Pool

Conoco Inc. respectfully requests administrative approval to amend the previously approved unorthodox location granted on October 1, 1985. The previously approved unorthodox location was 1800' FSL and 1980' FWL of Section 8, T-21S, R-36E, Lea County, New Mexico. The new unorthodox location is 1780' FSL and 2030' FWL of Section 8, T-21S, R-36E, Lea County, New Mexico. The request for the amendment is required to avoid existing powerlines.

Attached is a Form C-102 showing the well location and dedication.

Yours very truly,

Donald W. Johnson

*Offset notification
sent out*

ELK:jr

1-8-86

**NEW MEXICO OIL CONSERVATION COMMISSION
WELL LOCATION AND ACREAGE DEDICATION PLAT**

Form C-102
Supersedes C-128
Effective 1-1-65

All distances must be from the outer boundaries of the Section.

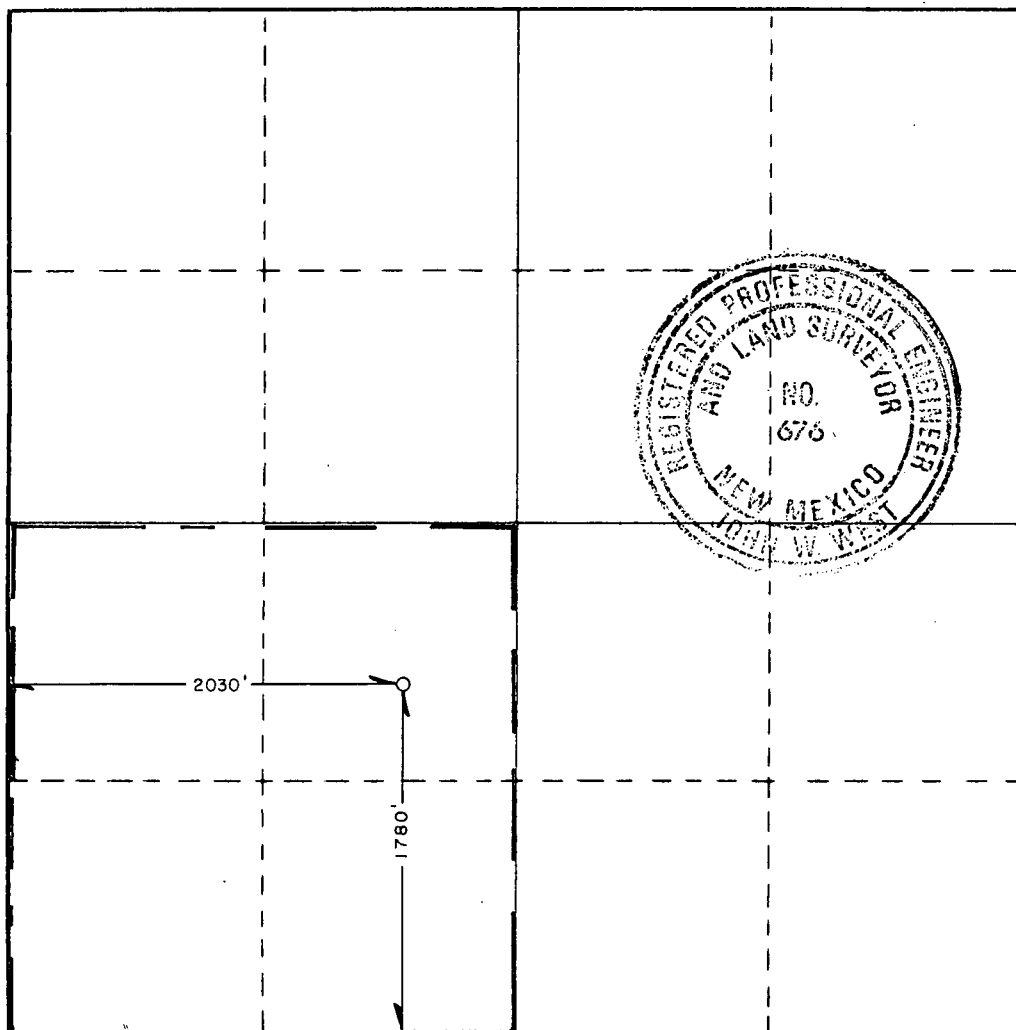
Operator CONOCO INC.			Lease MYERS A1		Well No. 18
Unit Letter K	Section 8	Township 21 SOUTH	Range 36 EAST	County LEA	
Actual Footage Location of Well: <div style="display: flex; justify-content: space-between;"> 1780 feet from the SOUTH line and 2030 feet from the WEST line </div>					
Ground Level Elev. 3600.1'	Producing Formation Yates 7 RVRS Queen		Pool Eumont		Dedicated Acreage: 160 Acres

1. Outline the acreage dedicated to the subject well by colored pencil or hachure marks on the plat below.
2. If more than one lease is dedicated to the well, outline each and identify the ownership thereof (both as to working interest and royalty).
3. If more than one lease of different ownership is dedicated to the well, have the interests of all owners been consolidated by communitization, unitization, force-pooling, etc?

☐ Yes ☐ No If answer is "yes," type of consolidation _____

If answer is "no," list the owners and tract descriptions which have actually been consolidated. (Use reverse side of this form if necessary.) _____

No allowable will be assigned to the well until all interests have been consolidated (by communitization, unitization, forced-pooling, or otherwise) or until a non-standard unit, eliminating such interests, has been approved by the Commission.



CERTIFICATION

I hereby certify that the information contained herein is true and complete to the best of my knowledge and belief.

Name *John L. Vogel*
 Position Administrative Supervisor
 Company CONOCO INC
 Date 11-27-85

I hereby certify that the well location shown on this plat was plotted from field notes of actual surveys made by me or under my supervision, and that the same is true and correct to the best of my knowledge and belief.

Date Surveyed
NOVEMBER 21, 1985

Registered Professional Engineer
and/or Land Surveyor

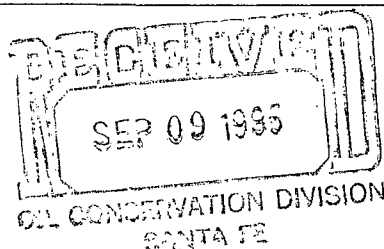
John W. West
 Certificate No. **JOHN W. WEST, 676**
RONALD J. EIDSON, 3239

Release Sept 29, 1985



B4 DRC

Donald W. Johnson
Division Manager
Production Department
Hobbs Division
North American Production



Conoco Inc.
P.O. Box 460
726 East Michigan
Hobbs, NM 88240
(505) 393-4141

NSC-2165
RULE-104 F (I)

August 14, 1985

R-291

State of New Mexico
Energy and Minerals Department
Oil Conservation Division
P. O. Box 2088
Santa Fe, NM 87501

160 Acre ded.
SW 1/4 Sect. 8

Attention Mr. Joe D. Ramey, Director

Gentlemen:

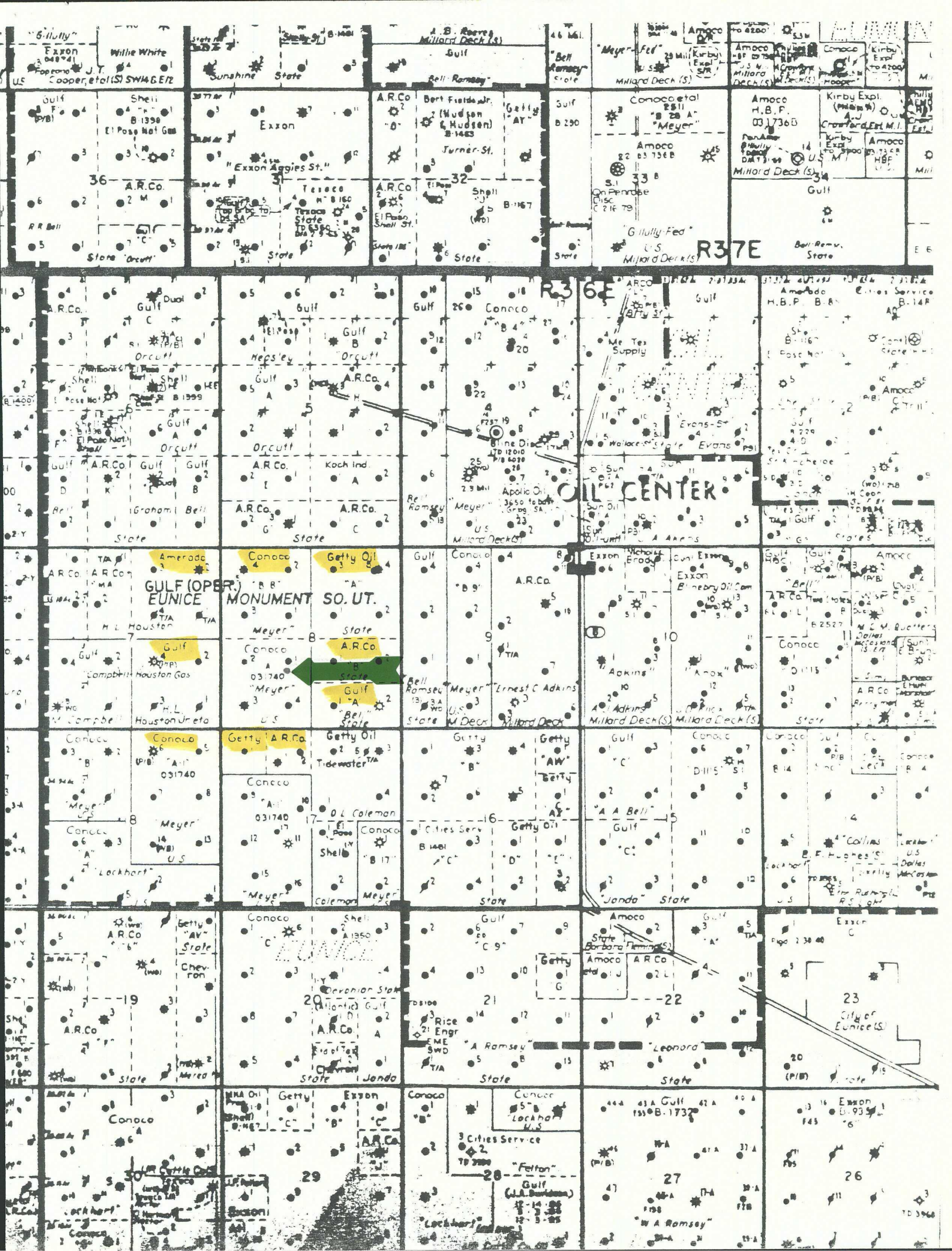
Request for Unorthodox Location-Meyer A-1 No. 18, 1880' FSL and 1980' FWL of Section 8, T-21S, R-36E, Lea County, New Mexico. Eumont Gas Pool

Conoco Inc. respectfully requests administrative approval to drill the subject well at an unorthodox location in unit letter K, 1880' FSL and 1980' FWL of Section 8, T-21S, R-36E, Lea County, New Mexico. This well is a replacement well for Meyer A-1 No. 3, located 660' FSL and 660' FWL of Section 8, T-21S, R-36E, which will be contributed to Gulf's Eunice Monument South Unit. The unorthodox location is necessary to avoid the existing well and to allow a more complete recovery of Eumont gas reserves by moving to a higher pressure region.

Attached is a map showing offset operators, Form C-102 showing the well location and dedication, and a list of offset operators. Please contact Coleen Bose of this office if you have any questions.

Yours very truly,

RCB:jr
Attachments



**NEW MEXICO OIL CONSERVATION COMMISSION
WELL LOCATION AND ACREAGE DEDICATION PLAT**

Form C-102
Supersedes C-128
Effective 1-1-65

All distances must be from the outer boundaries of the Section.

Operator CONOCO INC.		Lease MEYER A1		Well No. 18
Unit Letter K	Section 8	Township 21 SOUTH	Range 36 EAST	County LEA

Actual Footage Location of Well:

1880 feet from the **SOUTH** line and **1980** feet from the **WEST** line

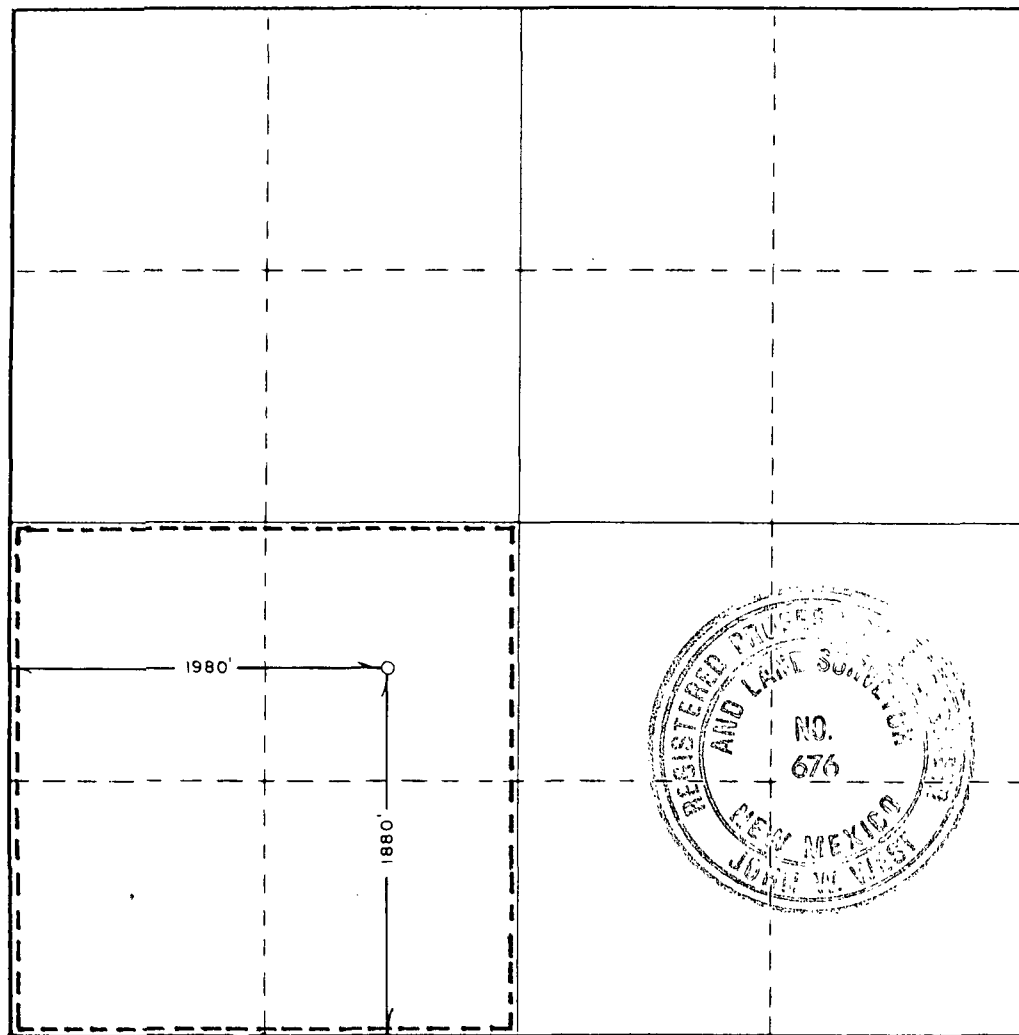
Ground Level Elev. 3599.6	Producing Formation Yates 7 Rvrs Qn	Pool Eumont	Dedicated Acreage: 160 Acres
-------------------------------------	---	-----------------------	--

1. Outline the acreage dedicated to the subject well by colored pencil or hachure marks on the plat below.
2. If more than one lease is dedicated to the well, outline each and identify the ownership thereof (both as to working interest and royalty).
3. If more than one lease of different ownership is dedicated to the well, have the interests of all owners been consolidated by communitization, unitization, force-pooling, etc?

☐ Yes ☐ No If answer is "yes," type of consolidation _____

If answer is "no," list the owners and tract descriptions which have actually been consolidated. (Use reverse side of this form if necessary.) _____

No allowable will be assigned to the well until all interests have been consolidated (by communitization, unitization, forced-pooling, or otherwise) or until a non-standard unit, eliminating such interests, has been approved by the Commission.



CERTIFICATION

I hereby certify that the information contained herein is true and complete to the best of my knowledge and belief.

Name: *Ken L. Vogel*
Position: **Administrative Supervisor**
Company: **Conoco Inc.**

Date: **9/4/85**

I hereby certify that the well location shown on this plat was plotted from field notes of actual surveys made by me or under my supervision, and that the same is true and correct to the best of my knowledge and belief.

Date Surveyed: **JULY 31, 1985**

Registered Professional Engineer and/or Land Surveyor

John W. West
Certificate No. **JOHN W. WEST, 676**
RONALD J. EIDSON, 3239

Offset Operators
Meyer A-1 No. 18

Getty Oil Co.
P. O. Box 1231
Midland, TX 79701

ARCO Oil & Gas Co.
P. O. Box 1710
Hobbs, NM 88240

Gulf Oil Exploration & Production Co.
P. O. Box 2100
Houston, TX 77252

Amerada Hess
P. O. Box 591
Midland, TX 79701