

Release July 25, 1985

By DRC

# MWJ PRODUCING COMPANY

★ PETROLEUM PRODUCERS ★

1804 FIRST NATIONAL BANK BUILDING

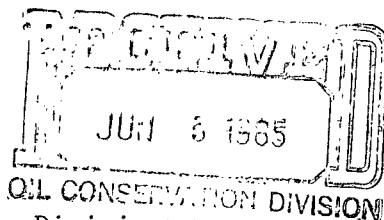
MIDLAND, TEXAS 79701

TELEPHONE (915) 682-5216

May 30, 1985

NSL-2097

RULE-104 F(I)



New Mexico Oil Conservation Division  
P. O. Box 2088  
Santa Fe, New Mexico 87501

*Wildcat Atoka*  
*315.25 Acre dedication*  
*S/2, Section 6*

RE: MWJ Producing Company  
Elkan 6 Com #1  
Unit Letter L, Sec 6, T-13S, R-35E  
Lea County, New Mexico

Gentlemen:

Coastal Oil and Gas Corporation applied for and received an approval for a non-standard location for the referenced well to drill a Wildcat Devonian test (#R7794). The well was drilled and reached a total depth of 13,406' on April 18, 1985. The Devonian was evaluated, deemed non-productive, and Coastal proposed to plug and abandon. MWJ, as a working interest owner in the well, elected to take over operations. We set 5-1/2" casing at 11,789' to attempt a completion in the Atoka.

*Wildcat*  
The Atoka has been completed through casing and will produce gas in commercial quantities. MWJ Producing Company therefore requests approval of the non-standard location of this well for the Atoka at 1650' FSL and 990' FWL of Section 6, Township 13S, Range 35E. Additionally, MWJ requests an approval of the simultaneous dedications of the 315.25 acres (S/2 of Sec 6) to the referenced well and a possible well to be drilled at a standard location in the SE/4 of Sec 6.

We have enclosed plats necessary to our requests. There are no outside operators within a two mile radius.

If any additional information is needed or you have any questions, please contact our office.

Very truly yours,

MWJ PRODUCING COMPANY

*Stan Venable*

Stan Venable

*Remarks: Division Order R-7794 approved this unscheduled location for Coastal Oil & Gas Corp for a Devonian test. This administrative order authorizes a Wildcat Atoka well at this unscheduled location for the new operator of this well.*

SV:pd

Enclosure

**NEW MEXICO OIL CONSERVATION COMMISSION  
WELL LOCATION AND ACREAGE DEDICATION PLAT**

Form C-102  
Supersedes C-128  
Effective 1-1-65

All distances must be from the outer boundaries of the Section.

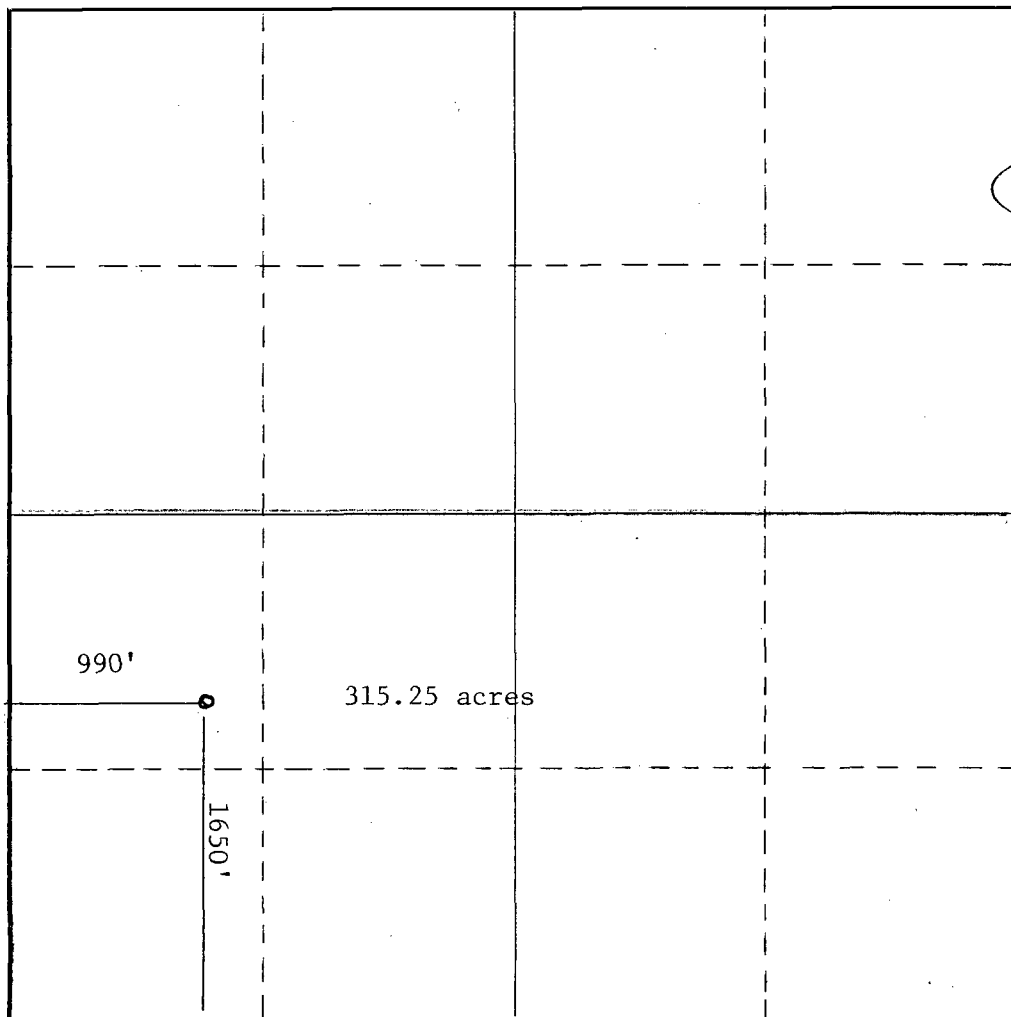
Operator <b>MWJ PRODUCING COMPANY</b>			Lease <b>ELKAN 6 COM</b>		Well No. <b>1</b>
Unit Letter <b>L</b>	Section <b>6</b>	Township <b>13S</b>	Range <b>35E</b>	County <b>Lea</b>	
Actual Footage Location of Well: <b>1650</b> feet from the <b>south</b> line and <b>990</b> feet from the <b>west</b> line					
Ground Level Elev: <b>4114.2'</b>	Producing Formation <b>Atoka</b>		Pool <b>W Wildcat</b>	Dedicated Acreage: <b>315.25</b> Acres	

1. Outline the acreage dedicated to the subject well by colored pencil or hachure marks on the plat below.
2. If more than one lease is dedicated to the well, outline each and identify the ownership thereof (both as to working interest and royalty).
3. If more than one lease of different ownership is dedicated to the well, have the interests of all owners been consolidated by communitization, unitization, force-pooling, etc?

☒ Yes    ☐ No    If answer is "yes," type of consolidation communitization

If answer is "no," list the owners and tract descriptions which have actually been consolidated. (Use reverse side of this form if necessary.) \_\_\_\_\_

No allowable will be assigned to the well until all interests have been consolidated (by communitization, unitization, forced-pooling, or otherwise) or until a non-standard unit, eliminating such interests, has been approved by the Commission.



**CERTIFICATION**

*I hereby certify that the information contained herein is true and complete to the best of my knowledge and belief.*

*Pat Drexler*

Name

**Pat Drexler**

Position

**Agent**

Company

**MWJ PRODUCING COMPANY**

Date

**5/30/85**

*I hereby certify that the well location shown on this plat was plotted from field notes of actual surveys made by me or under my supervision, and that the same is true and correct to the best of my knowledge and belief.*

Date Surveyed

**2/12/85**

Registered Professional Engineer  
and/or Land Surveyor

**John West & Co**

Certificate No. **676**

0 330 660 990 1320 1650 1980 2310 2640 2000 1500 1000 500 0

NEW MEXICO OIL CONSERVATION COMMISSION  
WELL LOCATION AND ACREAGE DEDICATION

*Coastal  
Devonian  
Filing*

Form C-102  
Supersedes C-128  
Effective 1-1-65

All distances must be from the outer boundaries of the Section

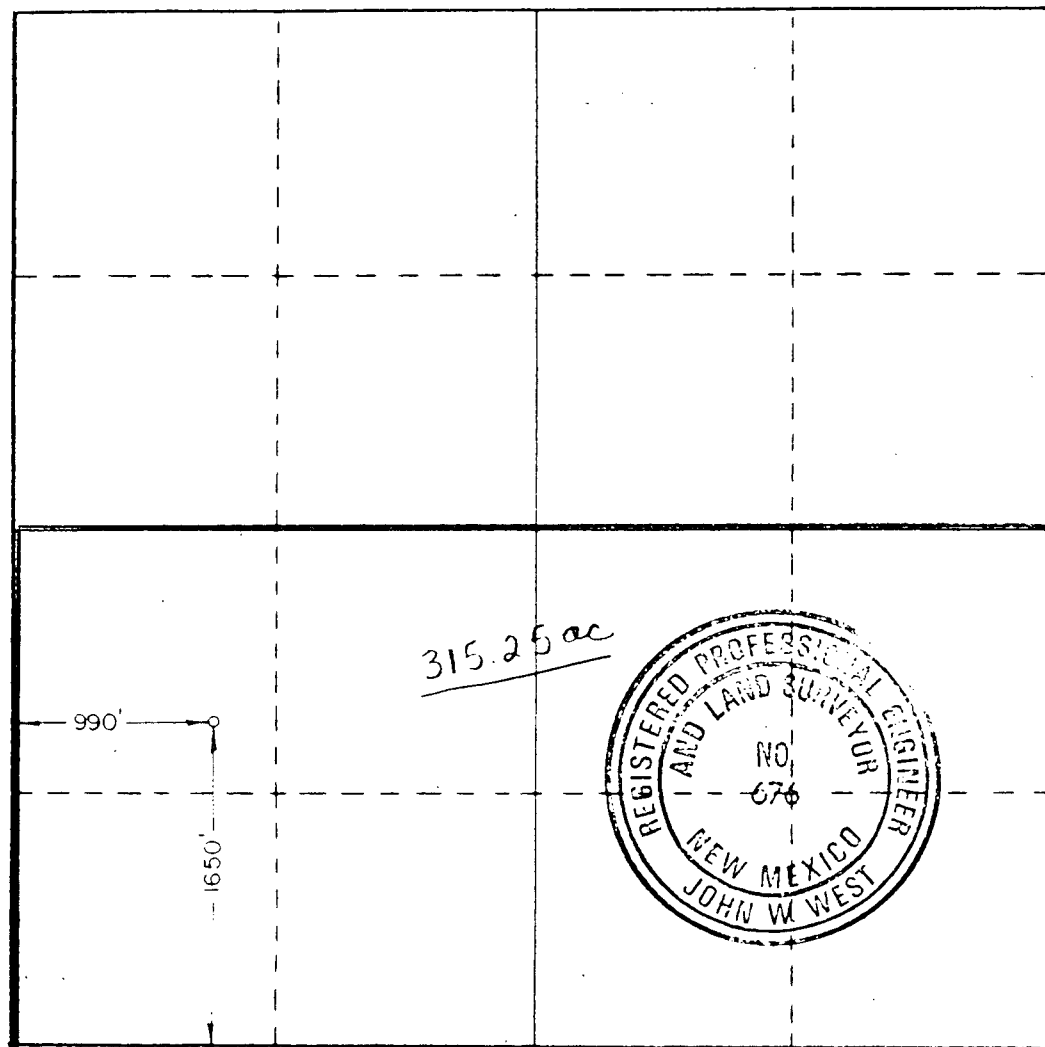
Operator COASTAL OIL & GAS CORP.			Lease ELKAN <del>CO.</del> 6 <i>Com</i>			Well No. 1		
Oil Letter L	Section 6	Township 13S	Range 35E	County LEA				
Actual Footage Location of Well: 1650 feet from the SOUTH line and 990 feet from the WEST line								
Ground Level Elev. 4114.2	Producing Formation Devonian		Pool <i>East Langer Lake</i> <del>Wildcat</del> <i>Devonian</i>			Dedicated Acreage: 315.25 Acres		

1. Outline the acreage dedicated to the subject well by colored pencil or hatchure marks on the plat below.
2. If more than one lease is dedicated to the well, outline each and identify the ownership thereof (both as to working interest and royalty).
3. If more than one lease of different ownership is dedicated to the well, have the interests of all owners been consolidated by communitization, unitization, force-pooling, etc?

☒ Yes ☐ No If answer is "yes," type of consolidation communitization

If answer is "no," list the owners and tract descriptions which have actually been consolidated. (Use reverse side of this form if necessary.)

No allowable will be assigned to the well until all interests have been consolidated (by communitization, unitization, forced-pooling, or otherwise) or until a non-standard unit, eliminating such interests, has been approved by the Commission.



CERTIFICATION

I hereby certify that the information contained herein is true and complete to the best of my knowledge and belief.

*Sue Vanderford*  
Name

Sue Vanderford

Position

Operations Analyst

Company

Coastal Oil & Gas Corp.

Date

2-14-85

I hereby certify that the well location shown on this plat was plotted from field notes of actual surveys made by me or under my supervision, and that the same is true and correct to the best of my knowledge and belief.

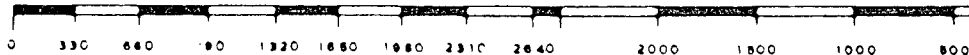
Date Surveyed

2/12/85

Registered Professional Engineer and Land Surveyor

*John W. West*  
Certificate No. JOHN W. WEST, 676

RONALD J. EIDSON, 3239



# MWJ PRODUCING COMPANY

★ PETROLEUM PRODUCERS ★

1804 FIRST NATIONAL BANK BUILDING  
MIDLAND, TEXAS 79701  
TELEPHONE (915) 682-5216

July 1, 1985

Mr. Jerry Sexton  
New Mexico Oil Conservation Division  
P.O. Box 1980  
Hobbs, New Mexico 88240

Re: MWJ-Elkan 6 State Com #1  
Sec. 6, T-13S, R-35E  
Lea County, New Mexico

Dear Mr. Sexton:

MWJ Producing Company has applied to the Oil Conservation Division for the approval of a non-standard location for the referenced well. Enclosed please find a list of the offset operators and a copy of the notice that they received.

Very truly yours,

MWJ PRODUCING COMPANY

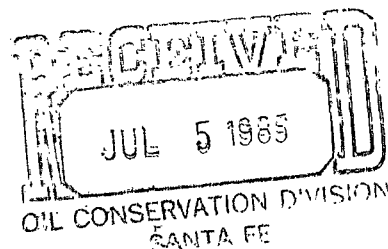


Stan Venable

SV:klw

Enclosures

cc: David Katanach-Santa Fe



# MWJ PRODUCING COMPANY

★ PETROLEUM PRODUCERS ★

1804 FIRST NATIONAL BANK BUILDING

MIDLAND, TEXAS 79701

TELEPHONE (915) 682-5216

June 28, 1985

TO: OFFSET OPERATORS

Re: MWJ - Elkan 6 State Com #1  
Sec.6, T13S-R35E  
Lea County, New Mexico

Gentlemen:

This letter serves as notice to all offset operators that MWJ PRODUCING COMPANY has requested approval from the New Mexico Oil Conservation Division of a non-standard location of 1690' from the south line and 990' from the east line of section 6 for the referenced well. Completion is in the Atoka; an earlier approval had been received from the Oil Conservation Division for a Devonian test.

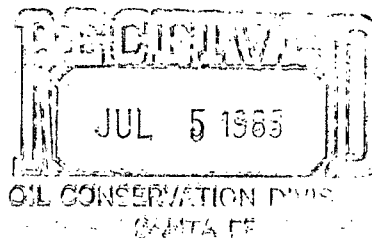
Very truly yours,

MWJ PRODUCING COMPANY



Stan Venable

SV:klw



OFFSET OPERATORS

Ladd Petroleum Corporation  
505 N. Big Spring Street  
Midland, Texas 79702

Ike Lovelady, Inc.  
P.O. Drawer 2666  
Midland, Texas 79702

Europa Energy  
9400 North Central Expressway  
Suite 1111, LB 109  
Dallas, Texas 75231

Harvey E. Yates  
P.O. Box 1933  
Roswell, New Mexico 88201

HNG Oil Company  
P.O. Box 2267  
Midland, Texas 79702

Union Texas Petroleum Corp.  
4000 N. Big Spring, Suite 500  
Midland, Texas 79705

Florida Exploration  
P.O. Box 27711  
Houston, Texas 77227