

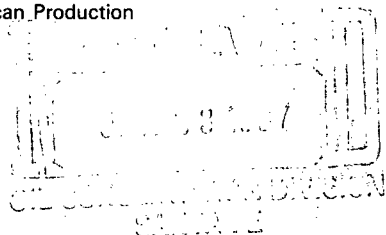
*Release Immediately
no offsets*



Bq Dec

R. E. Irelan
Division Manager
Production Department
Hobbs Division
North American Production

Conoco Inc.
P.O. Box 460
726 East Michigan
Hobbs, NM 88240
(505) 393-4141



*2311
NSL-~~XXXXXX~~
RULE-104 F(E)*

January 19, 1987

*Maljamar Grayburg San
Andres Pool*

State of New Mexico
Oil Conservation Division
P. O. Box 2088
Santa Fe, NM 87504-2088

*20 Acres ded.
E1/2 SW1/4 NE1/4 Sec 21*

Attention Mr. David Catanach

Gentlemen:

Request for Unorthodox Location-MCA Unit No. 368, 2620' FNL and 1404' FEL of Section 21, T-17S, R-32E, Lea County, New Mexico. Maljamar Grayburg/San Andres

Conoco Inc. respectfully requests administrative approval to drill the subject well at an unorthodox location in unit letter G, 2620' FNL and 1404' FEL of Section 21, T-17S, R-32E, Lea County, New Mexico. This well will be drilled on 20-acre spacing as provided for in Order No. 2403, dated December 31, 1962. The unorthodox location is necessary to avoid a Transwestern Pipeline and remain a safe distance away from MCA Unit No. 42.

Attached is a plat showing the proposed location and Form C-102 showing the well location and dedication. There are no offset operators. Please contact Ed Kepford at ext. 120 of this office if you have any questions.

Yours very truly,

ELK:jr
Attachments

**NEW MEXICO OIL CONSERVATION COMMISSION
WELL LOCATION AND ACREAGE DEDICATION PLAT**

Form C-102
Supersedes C-128
Effective 1-1-65

All distances must be from the outer boundaries of the Section.

Operator CONOCO, INC			Lease MCA UNIT		Well No. 368
Unit Letter G	Section 21	Township 17-S	Range 32-E	County LEA	

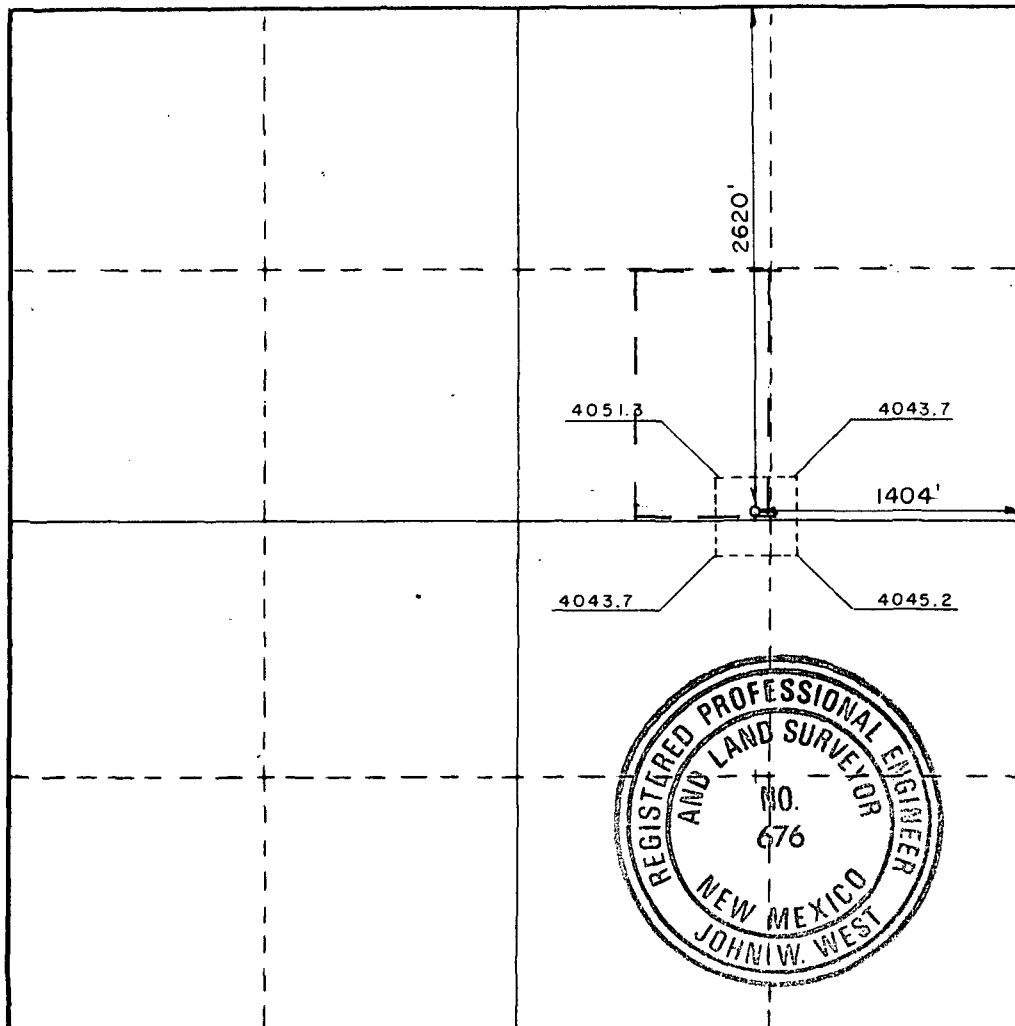
Actual Footage Location of Well: 2620 feet from the NORTH line and 1404 feet from the EAST line					
Ground Level Elev. 4047.7	Producing Formation Grayburg/San Andres	Pool Malamar Grayburg/San Andres	Dedicated Acreage: 20 Acres		

1. Outline the acreage dedicated to the subject well by colored pencil or hatchure marks on the plat below.
2. If more than one lease is dedicated to the well, outline each and identify the ownership thereof (both as to working interest and royalty).
3. If more than one lease of different ownership is dedicated to the well, have the interests of all owners been consolidated by communitization, unitization, force-pooling, etc?

☒ Yes ☐ No If answer is "yes," type of consolidation Unitization

If answer is "no," list the owners and tract descriptions which have actually been consolidated. (Use reverse side of this form if necessary.) _____

No allowable will be assigned to the well until all interests have been consolidated (by communitization, unitization, forced-pooling, or otherwise) or until a non-standard unit, eliminating such interests, has been approved by the Commission.



CERTIFICATION

I hereby certify that the information contained herein is true and complete to the best of my knowledge and belief.

Name Gene Bull
 Position Administrative Supervisor
 Company Conoco, Inc.
 Date 1-20-87

I hereby certify that the well location shown on this plat was plotted from field notes of actual surveys made by me or under my supervision, and that the same is true and correct to the best of my knowledge and belief.

Date Surveyed **JANUARY 5, 1987**
 Registered Professional Engineer and/or Land Surveyor
John W. West
 Certificate No. **JOHN W. WEST, 676**
RONALD J. EIDSON, 3239