

*Release Immediately
No offsets*



B, DEC

R. E. Irelan
Division Manager
Production Department
Hobbs Division
North American Production

Conoco Inc.
P.O. Box 460
726 East Michigan
Hobbs, NM 88240
(505) 393-4141

*NSL-2314
RULE-104F(E)*

January 27, 1987

State of New Mexico
Oil Conservation Division
P. O. Box 2088
Santa Fe, NM 87504-2088

Attention Mr. David Catanach

Gentlemen:

Request for Unorthodox Location MCA Unit No. 369, 1395' FNL and 1295' FWL of Section 29, T-17S, R-32E, Lea County, New Mexico. Maljamar Grayburg/San Andres Pool

*Maljamar Grayburg San Andres
Pool
20 Acre(s).
E1/2 SW1/4 NW1/4 Section 29*

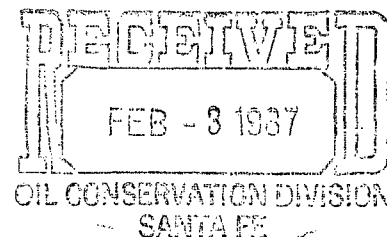
Conoco Inc. respectfully requests administrative approval to drill the subject well at an unorthodox location in unit letter G, 1425' FNL and 1962' FEL of Section 33, T-17S, R-32E, Lea County, New Mexico. This well will be drilled on 20-acre spacing as provided for in Order No. 2403, dated December 31, 1962. This well will be drilled as a replacement for MCA Unit No. 290. The unorthodox location is necessary to avoid power lines to the east and to remain a safe distance away from MCA Unit No. 290, 1295' FNL and FWL, Section 29, T-17S, R-32E.

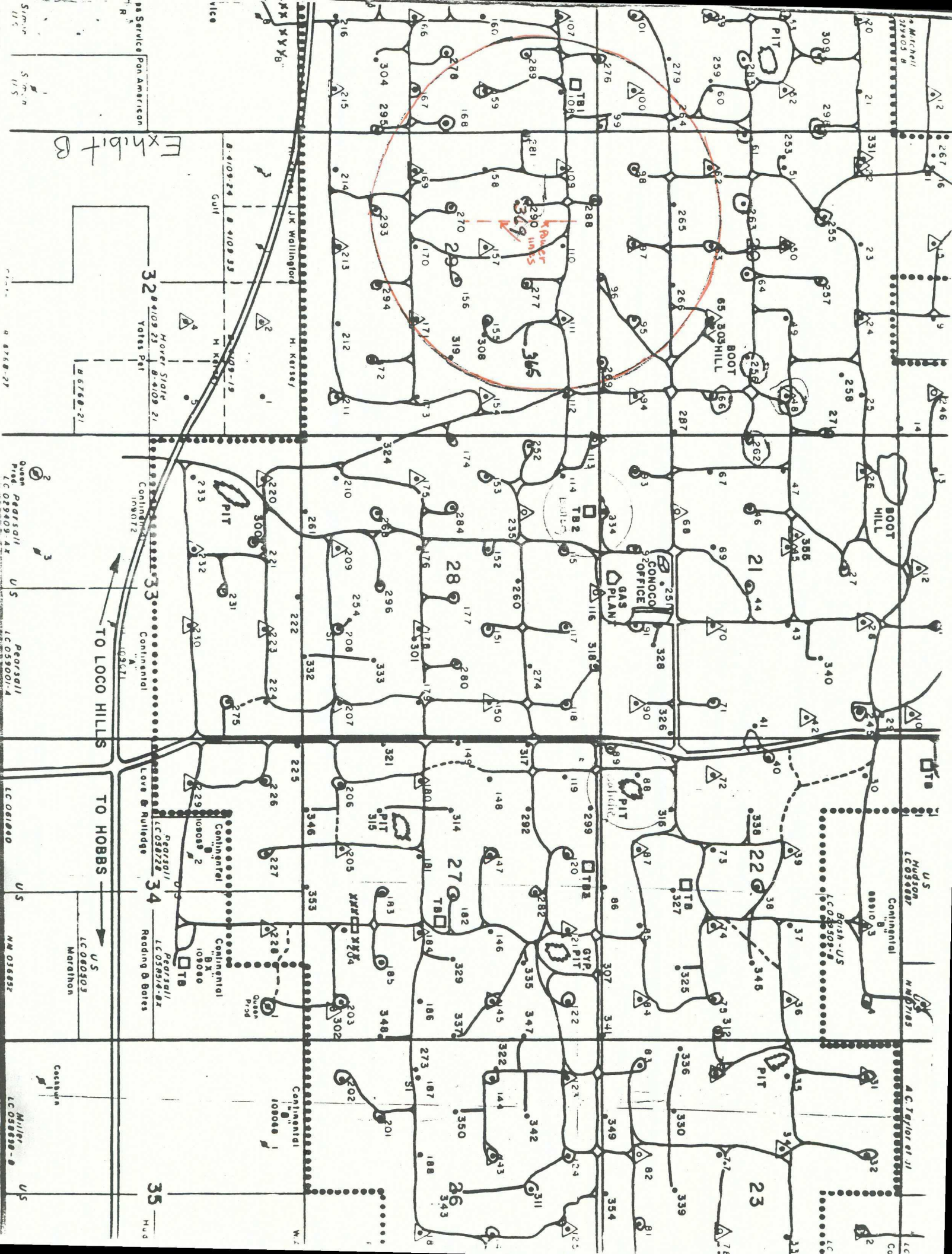
Attached is a plat showing the proposed location and Form C-102 showing the well location and dedication. There are no offset operators. Please contact Ed Kepford of this office if you have any questions.

Yours very truly,

R. E. Irelan

ELK:jr
Attachments





**NEW MEXICO OIL CONSERVATION COMMISSION
WELL LOCATION AND ACREAGE DEDICATION PLAT**

Form C-102
Supersedes C-128
Effective 1-1-65

All distances must be from the outer boundaries of the Section

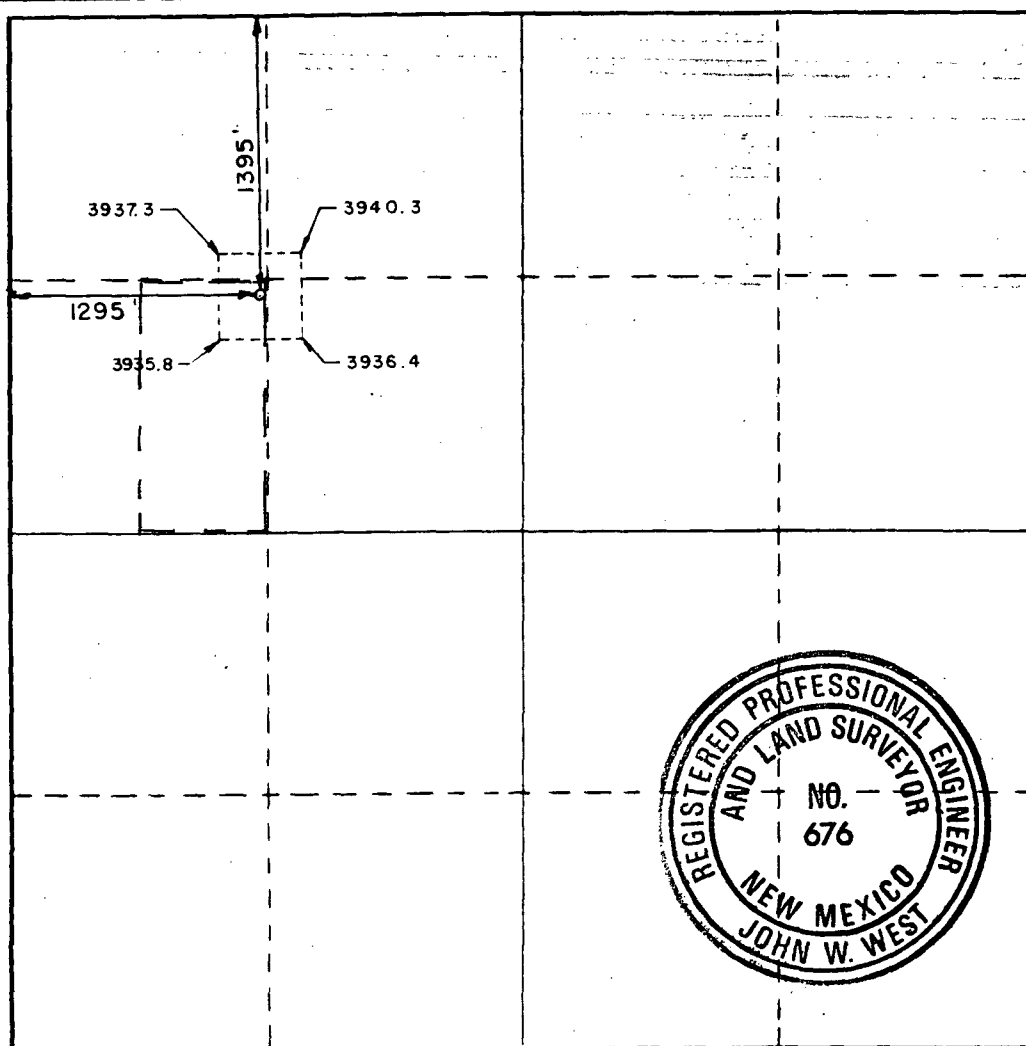
Operator CONOCO, INC.			Lease MCA UNIT			Well No. 369		
Unit Letter E	Section 29	Township 17-S	Range 32-E	County LEA				
Actual Footage Location of Well: <div style="display: flex; justify-content: space-between;"> 1395 feet from the NORTH line and 1295 feet from the WEST line </div>								
Ground Level Elev. 3936.6	Producing Formation Grayburg/San Andres			Pool Maljamar Grayburg/San Andres			Dedicated Acreage: 20 Acres	

1. Outline the acreage dedicated to the subject well by colored pencil or hatchure marks on the plat below.
2. If more than one lease is dedicated to the well, outline each and identify the ownership thereof (both as to working interest and royalty).
3. If more than one lease of different ownership is dedicated to the well, have the interests of all owners been consolidated by communitization, unitization, force-pooling, etc?

☒ Yes ☐ No If answer is "yes," type of consolidation unitization

If answer is "no," list the owners and tract descriptions which have actually been consolidated. (Use reverse side of this form if necessary.)

No allowable will be assigned to the well until all interests have been consolidated (by communitization, unitization, forced-pooling, or otherwise) or until a non-standard unit, eliminating such interests, has been approved by the Commission.



CERTIFICATION

I hereby certify that the information contained herein is true and complete to the best of my knowledge and belief.

Name [Signature]
 Position Administrative Supervisor
 Company Conoco Inc.

Date 1-23-87

I hereby certify that the well location shown on this plat was plotted from field notes of actual surveys made by me or under my supervision, and that the same is true and correct to the best of my knowledge and belief.

Date Surveyed
DECEMBER 3, 1986

Registered Professional Engineer and/or Land Surveyor

[Signature]

Certificate No. **JOHN W. WEST, 676**
RONALD J. EIDSON, 3239

**NEW MEXICO OIL CONSERVATION COMMISSION
WELL LOCATION AND ACREAGE DEDICATION PLAT**

Form C-102
Supersedes C-128
Effective 1-1-65

All distances must be from the outer boundaries of the Section.

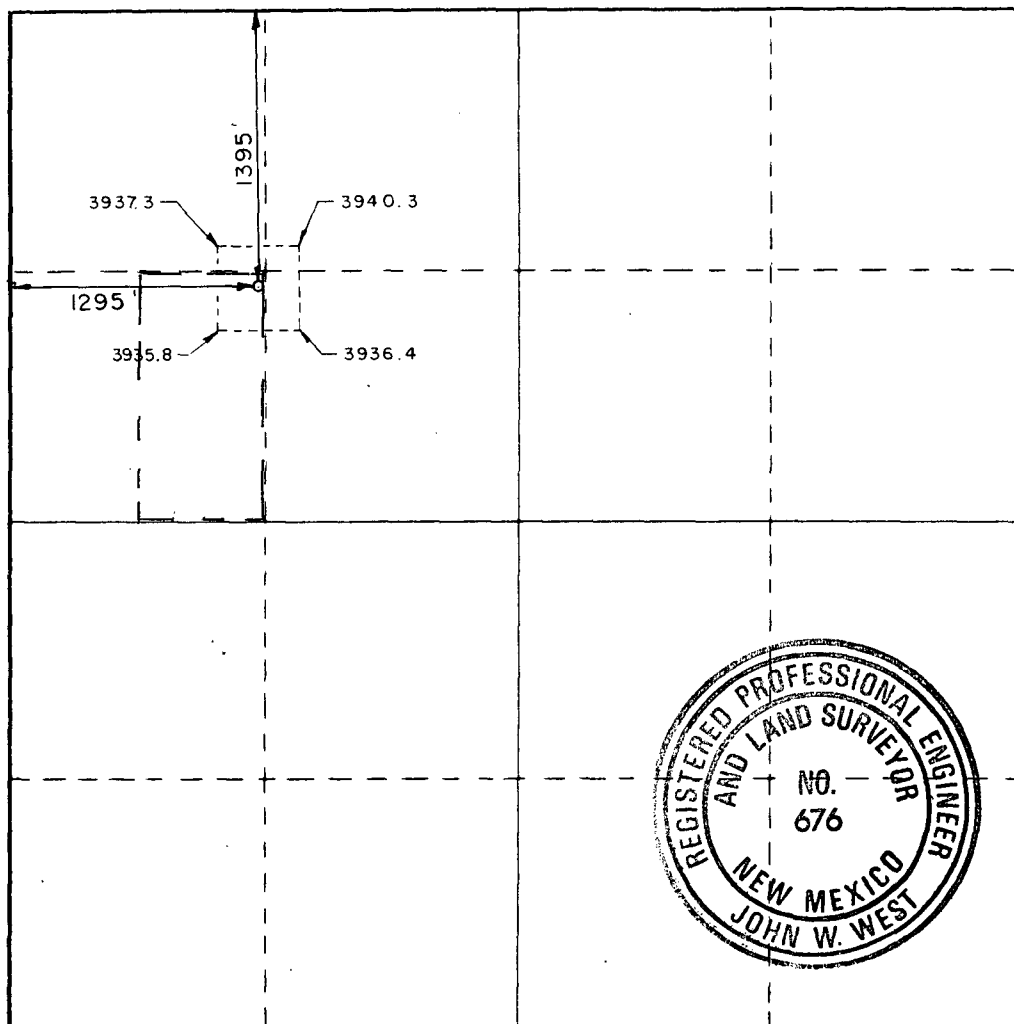
Operator CONOCO, INC.			Lease MCA UNIT		Well No. 369
Unit Letter E	Section 29	Township 17-S	Range 32-E	County LEA	
Actual Footage Location of Well: <div style="display: flex; justify-content: space-between;"> 1395 feet from the NORTH line and 1295 feet from the WEST line </div>					
Ground Level Elev. 3936.6	Producing Formation Grayburg/San Andres		Pool Maljamar Grayburg/San Andres		Dedicated Acreage: 20 Acres

1. Outline the acreage dedicated to the subject well by colored pencil or hatchure marks on the plat below.
2. If more than one lease is dedicated to the well, outline each and identify the ownership thereof (both as to working interest and royalty).
3. If more than one lease of different ownership is dedicated to the well, have the interests of all owners been consolidated by communitization, unitization, force-pooling, etc?

☒ Yes ☐ No If answer is "yes," type of consolidation Unitization

If answer is "no," list the owners and tract descriptions which have actually been consolidated. (Use reverse side of this form if necessary.) _____

No allowable will be assigned to the well until all interests have been consolidated (by communitization, unitization, forced-pooling, or otherwise) or until a non-standard unit, eliminating such interests, has been approved by the Commission.



CERTIFICATION

I hereby certify that the information contained herein is true and complete to the best of my knowledge and belief.

Name *John W. West*
 Position Administrative Supervisor
 Company Conoco Inc.

Date 1-23-87

I hereby certify that the well location shown on this plat was plotted from field notes of actual surveys made by me or under my supervision, and that the same is true and correct to the best of my knowledge and belief.

Date Surveyed
DECEMBER 3, 1986

Registered Professional Engineer
and/or Land Surveyor

John W. West
 Certificate No. **JOHN W. WEST, 676**
RONALD J. EIDSON, 3239