

Release Date: 5-21-87



By DRC

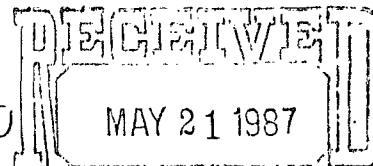
R. E. Irelan
Division Manager
Production Department
Hobbs Division
North American Production

Conoco Inc.
P.O. Box 460
726 East Michigan
Hobbs, NM 88240
(505) 393-4141

May 18, 1987

NSL-2348

RULE-104 FE



OIL CONSERVATION DIVISION
SANTA FE

State of New Mexico
Oil Conservation Division
P. O. Box 2088
Santa Fe, NM 87504-2088

Attention Mr. William LeMay, Director

40 Acre ded.
Maljamar Grayburg San Andres Pool
NW 1/4 Sec 20

Gentlemen:

Request for Unorthodox Location MCA Unit No. 374, 2505' FSL and 1150' FWL, Section 20, T-17S, R-32E, Lea County, NM. Maljamar Grayburg/San Andres

Conoco Inc. respectfully requests administrative approval to drill the subject well at an unorthodox location in unit letter L, 2505' FSL & 1150' FWL, Section 20, T-17S, R-32E, Lea County, New Mexico. This well will be drilled on 20-acre spacing as provided for in Order No. 2403, dated December 31, 1962.

The necessity for drilling the MCA Unit No. 374 at an unorthodox location is due to the presence of power lines to the east of the location and the plugged MCA No. 263, Unit L, Sec. 20, T-17S, R-32E to the south of the location.

Attached is a plat of the proposed location, Form C-102 showing well location and dedication. There are no offset operators. Please contact Ed Kepford at ext. 120 of this office if you have any further questions.

Yours very truly,

ELK:mgt

Attachments

**NEW MEXICO OIL CONSERVATION COMMISSION
WELL LOCATION AND ACREAGE DEDICATION PLAT**

Form C-102
Supersedes C-121
Effective 1-1-65

All distances must be from the outer boundaries of the Section.

Operator CONOCO, INC.		Lease MCA Unit		Well No. 374
Unit Letter L	Section 20	Township 17 South	Range 32 East	County Lea

Actual Footage Location of Well:

2505 feet from the **south** line and **1150** feet from the **west** line

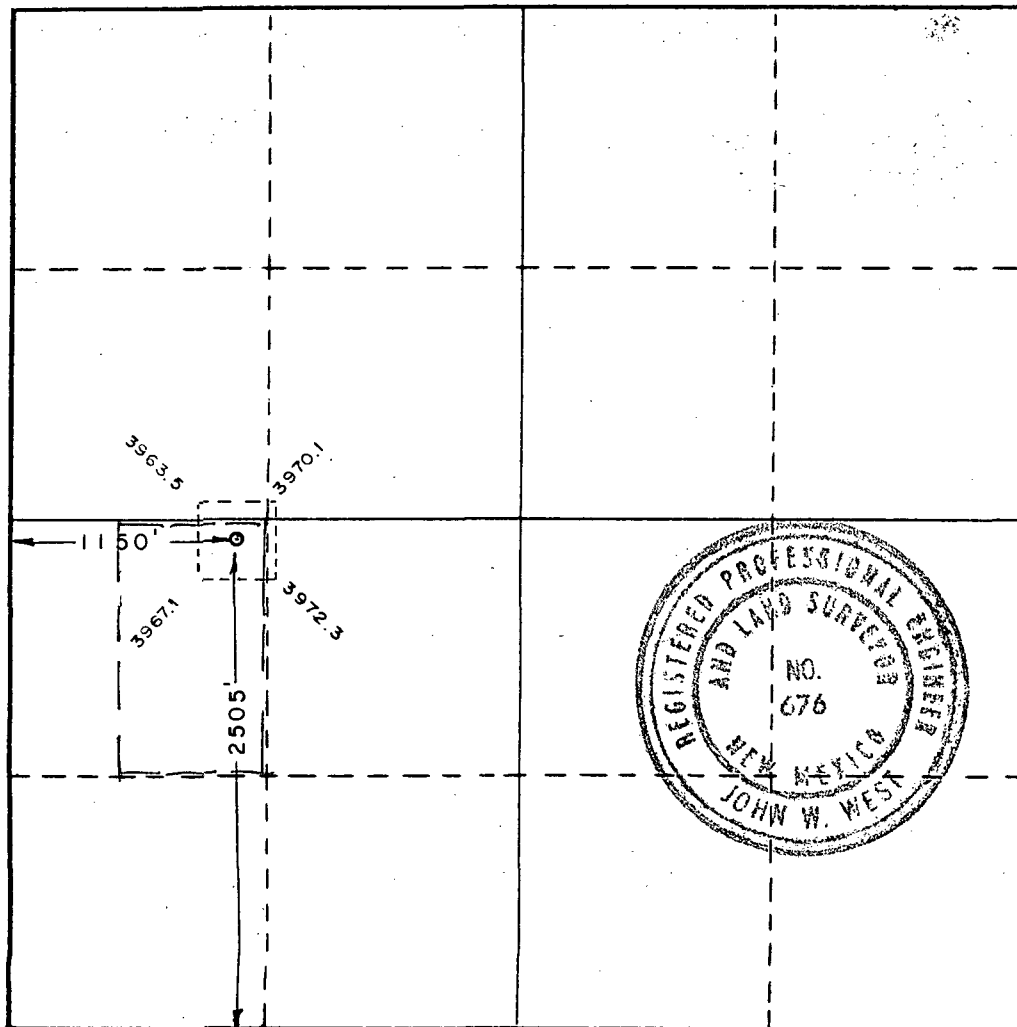
Ground Level Elev. 3963.4	Producing Formation Grayburg/San Andres	Pool Malamar Grayburg/San Andres	Dedicated Acreage: 20 Acres
-------------------------------------	---	--	---------------------------------------

1. Outline the acreage dedicated to the subject well by colored pencil or hatchure marks on the plat below.
2. If more than one lease is dedicated to the well, outline each and identify the ownership thereof (both as to working interest and royalty).
3. If more than one lease of different ownership is dedicated to the well, have the interests of all owners been consolidated by communitization, unitization, force-pooling, etc?

☒ Yes ☐ No If answer is "yes," type of consolidation **Unitization**

If answer is "no," list the owners and tract descriptions which have actually been consolidated. (Use reverse side of this form if necessary.) _____

No allowable will be assigned to the well until all interests have been consolidated (by communitization, unitization, forced-pooling, or otherwise) or until a non-standard unit, eliminating such interests, has been approved by the Commission.



CERTIFICATION

I hereby certify that the information contained herein is true and complete to the best of my knowledge and belief.

Name **DE FINNEY**
 Position **Administrative Supervisor**
 Company **Conoco Inc.**

Date **5-9-87**

I hereby certify that the well location shown on this plat was plotted from field notes of actual surveys made by me or under my supervision, and that the same is true and correct to the best of my knowledge and belief.

Date Surveyed
April 21, 1987

Registered Professional Engineer and/or Land Surveyor

John W. West
 Certificate No. **JOHN W. WEST, 676**
RONALD J. EIDSON, 3239

