

Release Date: July 9, 1987  
No offset

By DEC



**Sirgo-Collier, Inc.**

P. O. Box 3531, Midland, Texas 79702 (915) 685-0878

State of New Mexico  
Energy and Mineral Department  
Oil Conservation Division  
P.O. Box 2088  
Santa Fe, New Mexico 87501

NSL-2362  
RULE-104 F(I)  
West Dollarhide  
Queen Sand Unit No.  
74  
~~Unit~~ Dollarhide Queen Pool  
40 Acre dcd  
NW1/4 NE1/4 Sect 31

Re: Unorthodox Locations  
WDQSU 6-74  
1250 FNL, 2500 FEL, Sec. 31  
T-24-S, R-38-E  
Lea County, New Mexico

Ladies and Gentlemen:

This letter shall serve as our request to have the unorthodox locations described above approved by your office.

On the attached plat you will note our locations lie within the unit boundaries of the West Dollarhide Queen Sand Unit. We are requesting these locations be approved because these locations will allow us to establish a more efficient waterflood pattern in the field.

Should you have additional questions, please call.

Sincerely,

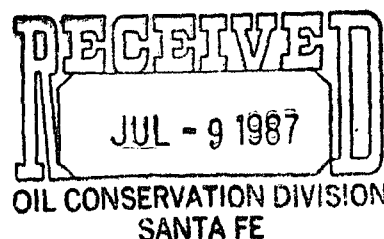
Brian M. Sirgo

Brian M. Sirgo

BMS:ba

attachment

cc: OCD - Hobbs  
Jerry Sexton



## OIL CONSERVATION DIVISION

STATE OF NEW MEXICO  
ENERGY AND MINERALS DEPARTMENTP. O. BOX 2088  
SANTA FE, NEW MEXICO 87501Form C-102  
Revised 10-1-78

All distances must be from the outer boundaries of the Section.

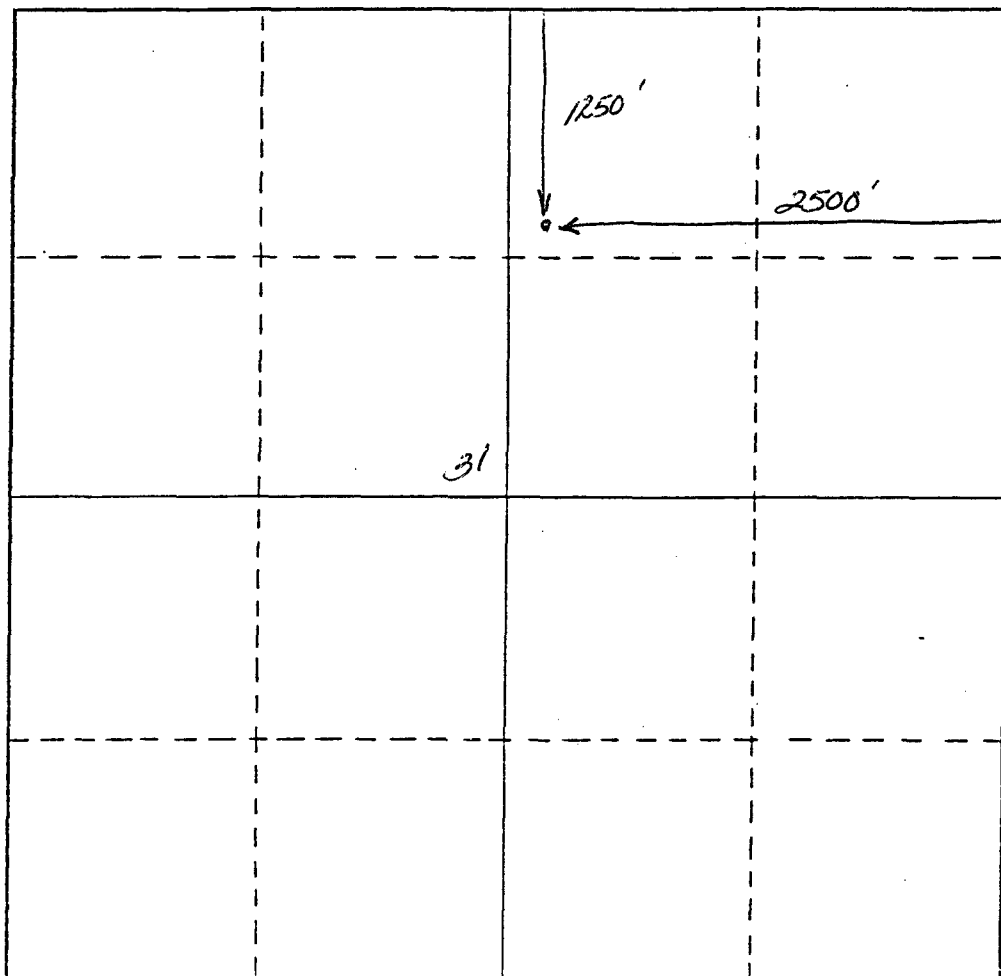
Operator		Lease		Well No.	
Unit Letter	Section <i>31</i>	Township <i>24 South</i>	Range <i>38 East</i>	County <i>Lea</i>	
Actual Footage Location of Well:					
feet from the		line and		feet from the line	
Ground Level Elev.	Producing Formation		Pool	Dedicated Acreage: Acres	

1. Outline the acreage dedicated to the subject well by colored pencil or hachure marks on the plat below.
2. If more than one lease is dedicated to the well, outline each and identify the ownership thereof (both as to working interest and royalty).
3. If more than one lease of different ownership is dedicated to the well, have the interests of all owners been consolidated by communitization, unitization, force-pooling, etc?

☐ Yes ☐ No If answer is "yes," type of consolidation \_\_\_\_\_

If answer is "no," list the owners and tract descriptions which have actually been consolidated. (Use reverse side of this form if necessary.) \_\_\_\_\_

No allowable will be assigned to the well until all interests have been consolidated (by communitization, unitization, forced-pooling, or otherwise) or until a non-standard unit, eliminating such interests, has been approved by the Division.



## CERTIFICATION

I hereby certify that the information contained herein is true and complete to the best of my knowledge and belief.

Name

Position

Company

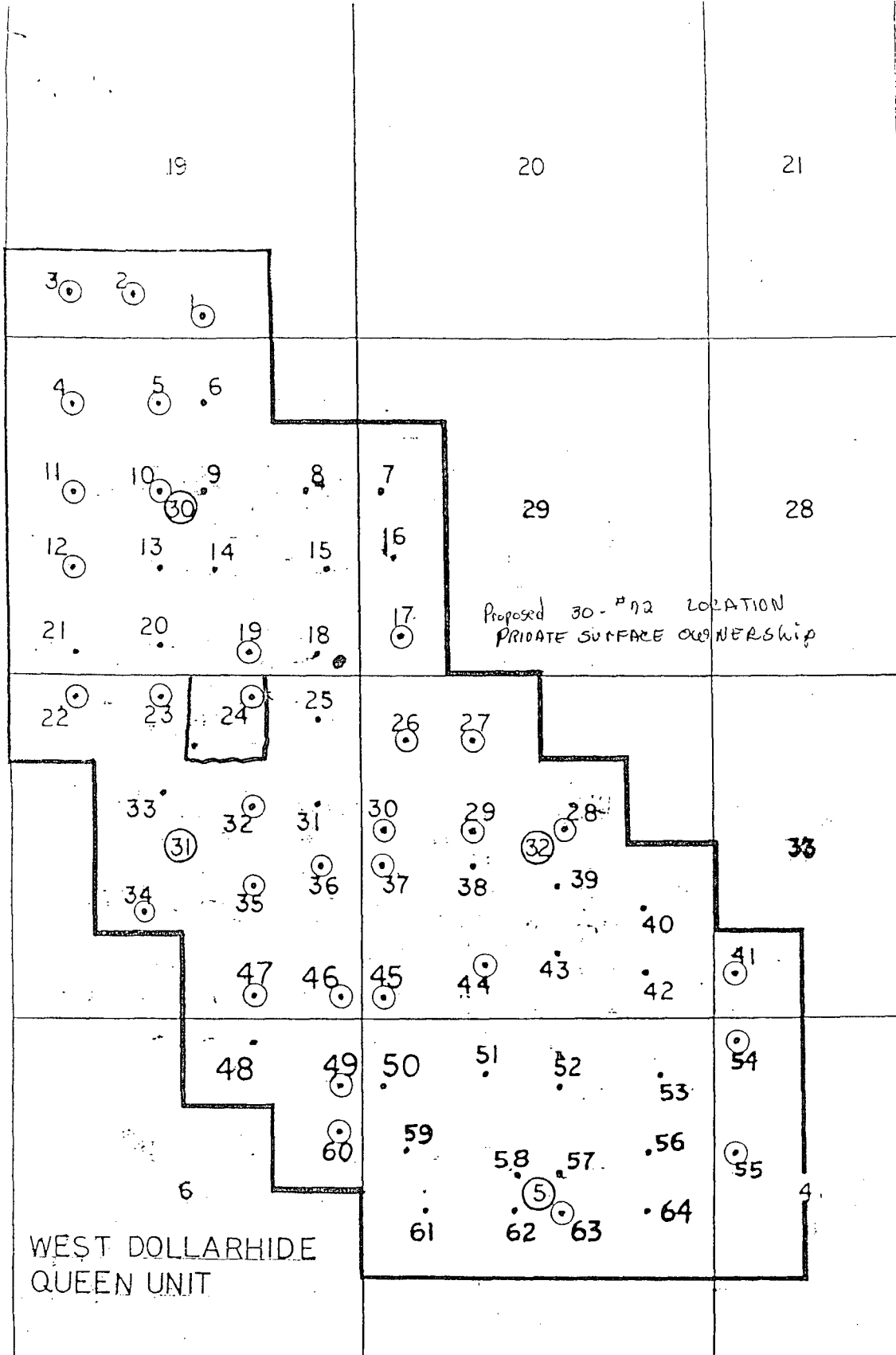
Date

I hereby certify that the well location shown on this plat was plotted from field notes of actual surveys made by me or under my supervision, and that the same is true and correct to the best of my knowledge and belief.

Date Surveyed

Registered Land Surveyor

Certificate No.



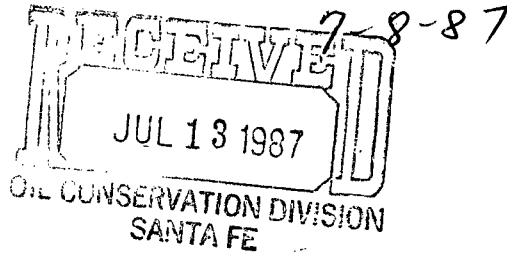
Plat of Unit wells by Unit well number.



STATE OF NEW MEXICO  
ENERGY AND MINERALS DEPARTMENT  
OIL CONSERVATION DIVISION  
HOBBS DISTRICT OFFICE

GARREY CARRUTHERS  
GOVERNOR

POST OFFICE BOX 1980  
HOBBS, NEW MEXICO 88241-1980  
(505) 393-6161



OIL CONSERVATION DIVISION  
P. O. BOX 2088  
SANTA FE, NEW MEXICO 87501

RE: Proposed:

MC \_\_\_\_\_  
DHC \_\_\_\_\_  
NSL ☒ \_\_\_\_\_  
NSP \_\_\_\_\_  
SWD \_\_\_\_\_  
WFX \_\_\_\_\_  
PMX \_\_\_\_\_

Gentlemen:

I have examined the application for the:

*Surgis Collier Inc. West Dolarhide Queen Sand Unit # 74B*  
Operator Lease & Well No. Unit S-T-R

31-24-38

and my recommendations are as follows:

*OK JJ.*

Yours very truly,

Jerry Sexton  
Supervisor, District 1

/ed