

Release Date

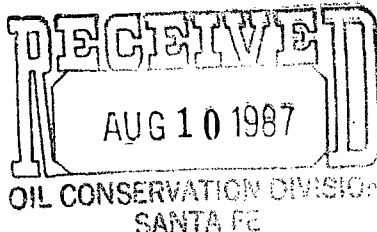
8-10-87

16 offsets

37 DEC



Union Texas Petroleum



August 6, 1987

375 U.S. Highway 64  
Farmington, New Mexico 87401  
Telephone (505) 325-3587

Mr. W. J. LeMay  
N.M. Oil Conservation Division  
P. O. Box 2088  
Santa Fe, New Mexico 87501-2088

Re: Administrative Approval  
Unorthodox Location Approval  
Newsom A #6  
1745' FSL & 1485' FEL  
Section 15-T26N-R8W  
San Juan County, NM

NSL - 2378  
RULE - 104 FI  
Wildcat  
Undesignated Gallup ~~Pool~~  
40 Acres ded.  
NW 1/4 SE 1/4 Section 15

Dear Mr. LeMay:

Union Texas Petroleum requests Administrative Approval for an Unorthodox Location for an Undesignated Gallup recompletion. This well is currently completed in the Basin Dakota. The Dakota will be plugged and abandoned. A sundry notice has been filed outlining the aforementioned procedure.

No other operators were notified of our intentions as this well is in an interior 40 acre tract completely surrounded by U.T.P. operated leases.

If I may be of any further assistance, please advise.

Very truly yours,

*Robert C. Frank*

Robert C. Frank  
Permit Coordinator

RCF:lmg  
attachments

cc: NMOCD-Aztec

## OIL CONSERVATION DIVISION

P. O. BOX 2088

STATE OF NEW MEXICO  
ENERGY AND MINERALS DEPARTMENT

SANTA FE, NEW MEXICO 87501

Form C-102  
Revised 10-1-78

All distances must be from the outer boundaries of the Section.

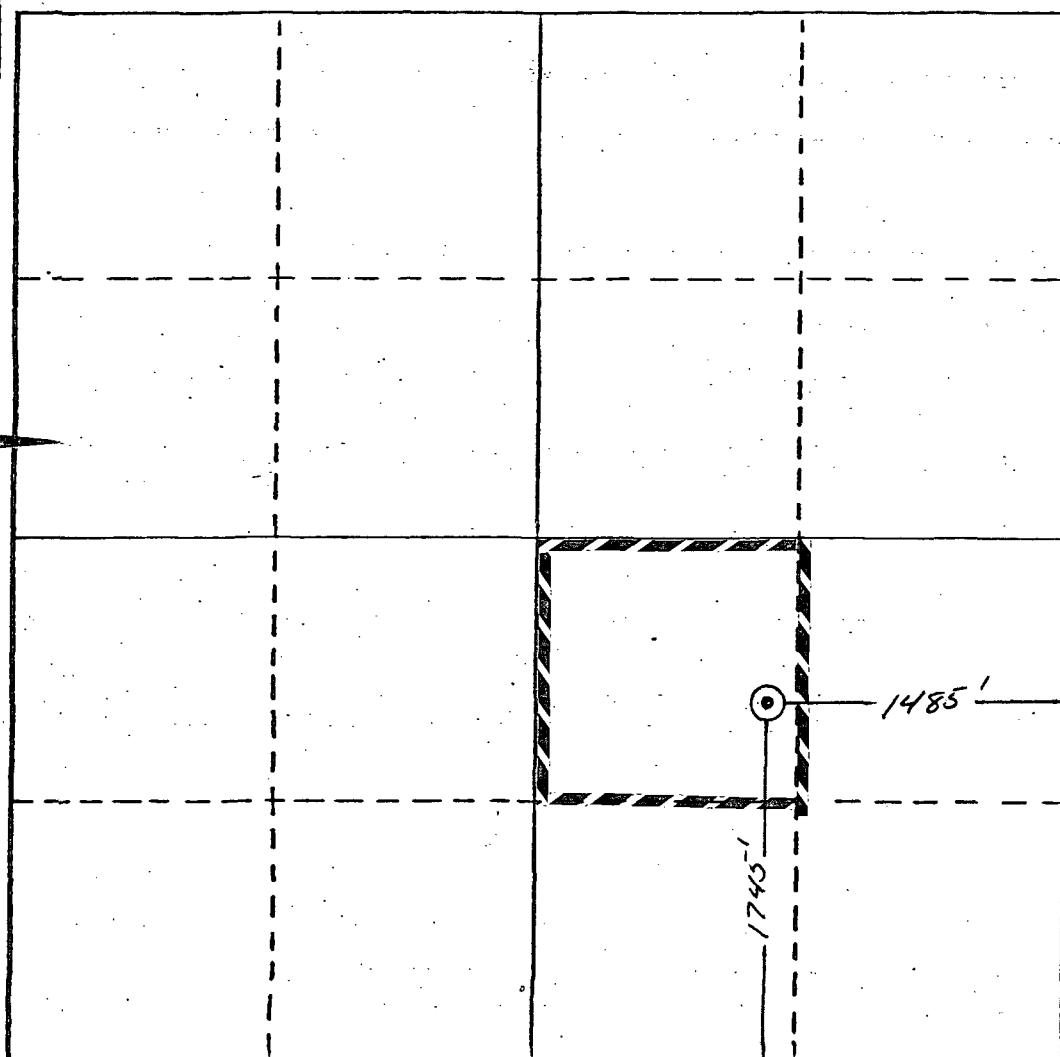
Operator Union Texas Petroleum			Lease Newsom "A"		Well No. 6
Unit Letter J	Section 15	Township 26 North	Range 8 West	County San Juan	
Actual Footage Location of Well: 1745 feet from the South line and 1485 feet from the East line					
Ground Level Elev. 7097	Producing Formation Gallup	Pool Undesignated		Dedicated Acreage: NW/SE 40 Acres	

1. Outline the acreage dedicated to the subject well by colored pencil or hachure marks on the plat below.
2. If more than one lease is dedicated to the well, outline each and identify the ownership thereof (both as to working interest and royalty).
3. If more than one lease of different ownership is dedicated to the well, have the interests of all owners been consolidated by communitization, unitization, force-pooling, etc?

☐ Yes ☐ No If answer is "yes," type of consolidation \_\_\_\_\_

If answer is "no," list the owners and tract descriptions which have actually been consolidated. (Use reverse side of this form if necessary.) \_\_\_\_\_

No allowable will be assigned to the well until all interests have been consolidated (by communitization, unitization, forced-pooling, or otherwise) or until a non-standard unit, eliminating such interests, has been approved by the Division.



## CERTIFICATION

I hereby certify that the information contained herein is true and complete to the best of my knowledge and belief.

*Robert C. Frank*

Name

Robert C. Frank

Position

Permit Coordinator

Company

Union Texas Petroleum

Date

August 4, 1987

I hereby certify that the well location shown on this plat was plotted from field notes of actual surveys made by me or under my supervision, and that the same is true and correct to the best of my knowledge and belief.

Original signed 9/12/67

Date Surveyed

Registered Professional Engineer  
and/or Land Surveyor

Certificate No.

0 330 660 990 1320 1650 1980 2310 2640 2970 3300

Newsom "A" 6

Offset Operator Plat

Union Texas Petroleum

