

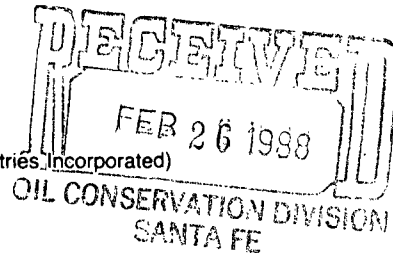
Release Date:
February 26, 1988

By Dec



Primary Fuels, Inc.

(A Subsidiary of Houston Industries Incorporated)



February 22, 1988

NSC-2475
RULE-104 F(L)

Oil Conservation Commission
Post Office Box 2088
Santa Fe, New Mexico 87504-2088
Attn: Mr. William J. Landry, Director

Undesignated Happy
Valley Narrow Gas
Pool

Subject: Unorthodox location
Primary Fuels, Inc. - Amoco 19 Federal No. 3
1780' FNL & 2573' FEL, Sec 19, T22S, R26E
Eddy County, New Mexico

320 Acres dec
11/2 Sec 19

Gentlemen:

Primary Fuels respectfully request that the referenced unorthodox location be approved administratively. The unorthodox location was required by the Federal Bureau of Land Management because of topographic considerations.

Attached is a plat showing the location of Well No. 1 PFI Amoco 19 Federal, the initial location for the proposed Well No. 3, and three alternate locations for the proposed Well No. 3. Also shown is the electric line serving the rancher's house (there is a telephone line about 50 feet south and parallel to the electric line), a fence, and McKittrick Draw. The draw, which is about 50 feet wide and 5 to 10 feet deep, is normally dry. It appears, however, to carry considerable water when it rains.

The initial location for Well No. 3 is on the side of a hill in a drainage area only 90 feet from the rancher's telephone line and about 140' from his electric line. To construct a well pad and pit here would require a maximum cut of about 20 feet on the north side and a corresponding 20 foot fill on the south.

Mr. Barry Hunt, BLM's field representative, selected three alternate locations which he felt would be acceptable to the BLM. All three are unorthodox locations. Alternate location No. 2 is located 1,780 feet from the north section line and 2,573 feet from the east section line. This location is the one preferred by Primary Fuels and it has been approved by the BLM. A copy of the Approved Federal "Application For Permit To Drill" is attached.

Mr. William J. Landry

Subject: Unorthodox location

Primary Fuels, Inc. - Amoco 19 Federal No. 3

1780' FNL & 2573' FEL, Sec 19, T22S, R26E

Eddy County, New Mexico

Page 2

February 22, 1988

Also attached is a map showing the offset operators. Each of these operators has been notified of this application and waivers from each are attached.

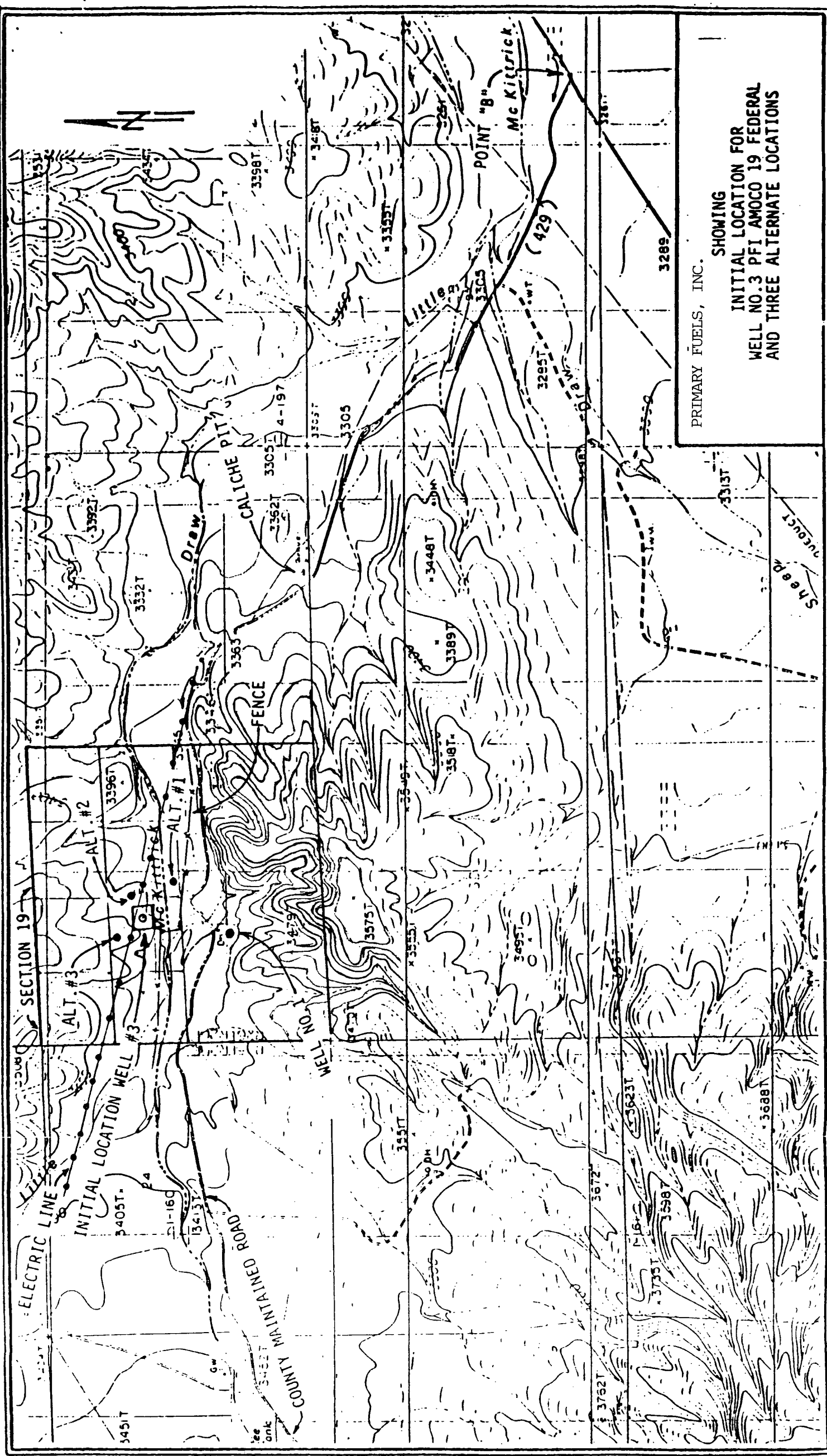
Yours very truly,

A handwritten signature in dark ink, appearing to read "K. W. Harbin". The signature is fluid and cursive, with the first letters of the first and last names being capitalized and prominent.

K. W. Harbin
Vice President

Attachment

JBS/slc



PRIMARY FUELS, INC.

SHOWING
INITIAL LOCATION FOR
WELL NO. 3 PFI AMOCO 19 FEDERAL
AND THREE ALTERNATE LOCATIONS

UNITED STATES
DEPARTMENT OF THE INTERIOR
BUREAU OF LAND MANAGEMENT

APPLICATION FOR PERMIT TO DRILL, DEEPEN, OR PLUG BACK

1a. TYPE OF WORK

DRILL ☒

DEEPEN ☐

PLUG BACK ☐

b. TYPE OF WELL

OIL
WELL ☐

GAS
WELL ☒

OTHER

SINGLE
ZONE ☒

MULTIPLE
ZONE ☐

2. NAME OF OPERATOR

PRIMARY FUELS, INC.

3. ADDRESS OF OPERATOR

P. O. BOX 569, HOUSTON, TEXAS 77001

4. LOCATION OF WELL (Report location clearly and in accordance with any State requirements.)

At surface

1780' FNL AND 2573' FEL OF SECTION 19

At proposed prod. zone

14. DISTANCE IN MILES AND DIRECTION FROM NEAREST TOWN OR POST OFFICE*

7 AIR MILES WEST-SOUTHWEST OF CARLSBAD, NEW MEXICO

10. DISTANCE FROM PROPOSED*
LOCATION TO NEAREST
PROPERTY OR LEASE LINE, FT.

(Also to nearest drlg. unit line, if any)

460'

16. NO. OF ACRES IN LEASE

957.28

17. NO. OF ACRES ASSIGNED
TO THIS WELL

318.60

18. DISTANCE FROM PROPOSED LOCATION*
TO NEAREST WELL, DRILLING, COMPLETED,
OR APPLIED FOR, ON THIS LEASE, FT.

1950'

19. PROPOSED DEPTH

11,350

20. ROTARY OR CABLE TOOLS

ROTARY

21. ELEVATIONS (Show whether DF, RT, GR, etc.)

3384.7' GL

22. APPROX. DATE WORK WILL START*

UPON APPROVAL

23.

PROPOSED CASING AND CEMENTING PROGRAM

SIZE OF HOLE	SIZE OF CASING	WEIGHT PER FOOT	SETTING DEPTH	QUANTITY OF CEMENT
17-1/2"	13-3/8"	48#	600'	SUFFICIENT TO CIRCULATE
12-1/4"	8-5/8"	24#	2200'	SUFFICIENT TO CIRCULATE
7-7/8"	5-1/2"	17# & 20#	11,350'	470 SACKS

AFTER SETTING PRODUCTION CASING, PAY ZONE WILL BE PERFORATED AND
STIMULATED AS NECESSARY.

SEE ATTACHED FOR: SUPPLEMENTAL DRILLING DATA
BOP SKETCH
SURFACE USE AND OPERATIONS PLAN

GAS IS NOT DEDICATED.

APPLICATION IS BEING FILED WITH THE NMCD FOR APPROVAL OF THIS
UNORTHODOX WELL LOCATION.

IN ABOVE SPACE DESCRIBE PROPOSED PROGRAM: If proposal is to deepen or plug back, give data on present productive zone and proposed new productive zone. If proposal is to drill or deepen directionally, give pertinent data on subsurface locations and measured and true vertical depths. Give blowout preventer program, if any.

24.

SIGNED

Arthur R. Brown

TITLE

Agent

DATE

12-30-87

(This space for Federal or State office use)

PERMIT NO.

APPROVAL DATE

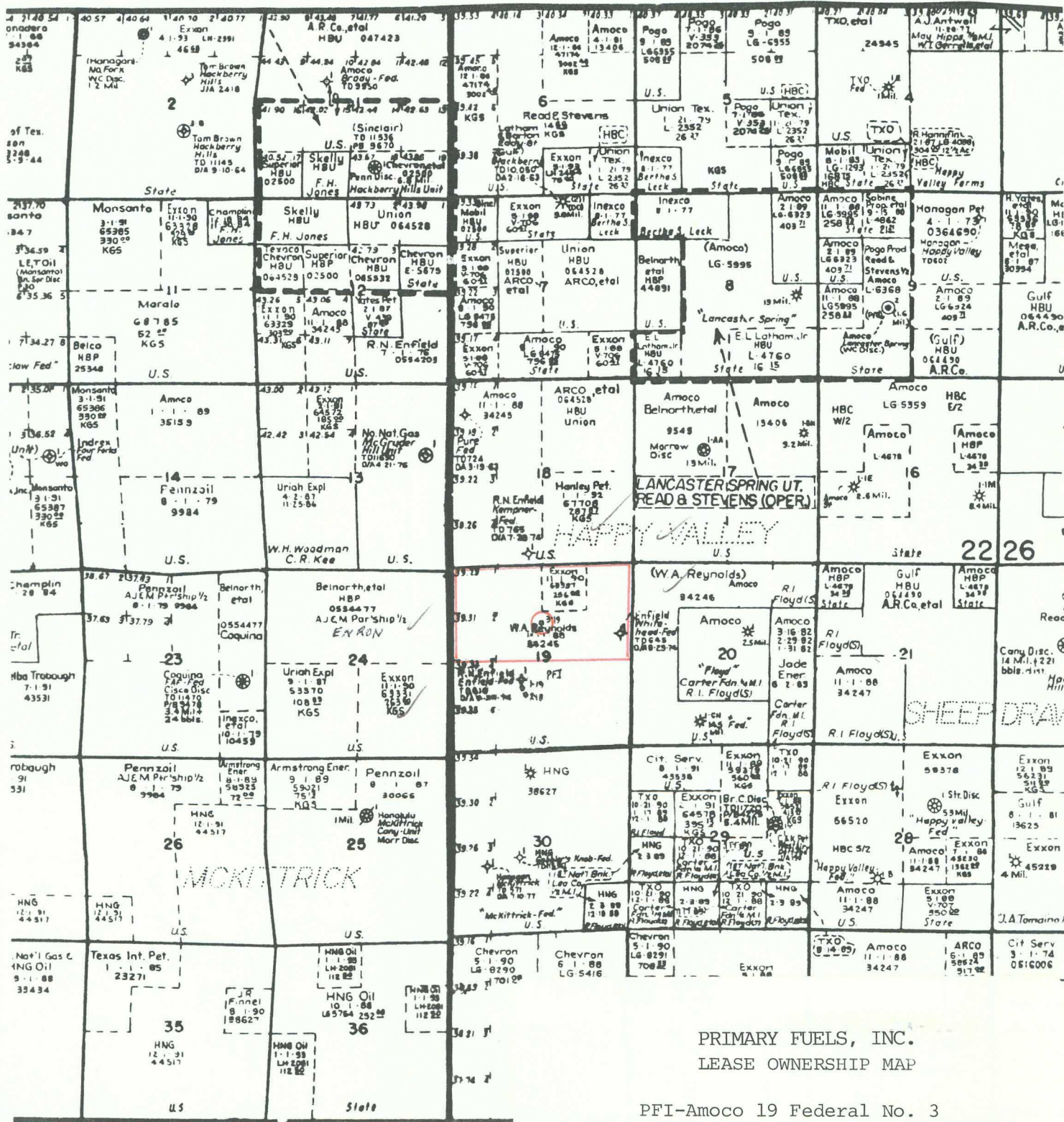
APPROVED BY

TITLE

DATE

CONDITIONS OF APPROVAL, IF ANY:

*See Instructions On Reverse Side



January 13, 1988

New Mexico Oil Conservation Commission
P. O. Box 2088
Santa Fe, New Mexico 87501
Attn: Director of Energy and Minerals Division

Re: Unorthodox location
Primary Fuels, Inc. - Amoco 19 Federal No. 3
1780' FNL & 2573' FEL, Sec 19, T22S, R26E
Eddy County, New Mexico

Gentlemen:

Exxon has been advised that Primary Fuels, Inc. is making application to drill the referenced well at the stated unorthodox location. This is to advise that Exxon has no objections to approval of the application.

Yours very truly,
CORPORATION
Exxon ~~Company USA~~

By:

Date:

James H. Hume
2/12/88

JBS/slc

January 13, 1988

New Mexico Oil Conservation Commission
P. O. Box 2088
Santa Fe, New Mexico 87501
Attn: Director of Energy and Minerals Division

Re: Unorthodox location
Primary Fuels, Inc. - Amoco 19 Federal No. 3
1780' FNL & 2573' FEL, Sec 19, T22S, R26E
Eddy County, New Mexico

Gentlemen:

Hanley Petroleum has been advised that Primary Fuels, Inc. is making application to drill the referenced well at the stated unorthodox location. This is to advise that Hanley Petroleum has no objections to approval of the application.

Yours very truly,

Hanley Petroleum, Inc.

By: L. O. Coburn
President
Date: January 19, 1988

JBS/slc



James F. Trickett
Regional Environmental
Affairs and Safety Manager

February 9, 1988

File: JCA-986.51NM-436

Re: Unorthodox Location
Amoco 19 Federal No. 3
1780' FNL & 2573' FEL, Sec. 19, T22S, R26E
Eddy County, New Mexico

New Mexico Oil Conservation Commission
P. O. Box 2088
Santa Fe, New Mexico 87501

Attention: William J. LeMay

Amoco Production Company has been advised that Primary Fuels, Inc. is making application to drill the referenced well at the above stated unorthodox location. This is to advise that Amoco has no objection to approval of the application.

Yours very truly,


MLC/

cc: Primary Fuels, Inc.
415 West Wall, Suite 1300
Midland, TX 79701

Amoco Production Company

Houston Region
501 WestLake Park Boulevard
Post Office Box 3092
Houston, Texas 77253

713-556-2000

RECEIVED

FEB 10 1988

PRIMARY FUELS
Land Department
Midland, Texas

January 13, 1988

New Mexico Oil Conservation Commission
P. O. Box 2088
Santa Fe, New Mexico 87501
Attn: Director of Energy and Minerals Division


Re: Unorthodox location
Primary Fuels, Inc. - Amoco 19 Federal No. 3
1780' FNL & 2573' FEL, Sec 19, T22S, R26E
Eddy County, New Mexico

Gentlemen:

Enron has been advised that Primary Fuels, Inc. is making application to drill the referenced well at the stated unorthodox location. This is to advise that Enron has no objections to approval of the application.

Yours very truly,

Enron Oil & Gas Company

By: 
Date: 1-14-88

JBS/slc