



McClellan Oil Corporation

June 1, 1989

RECEIVED

JUN - 5 1989

OIL CONSERVATION DIV.
SANTA FE

Mr. William LeMay
Director
New Mexico Oil Conservation Division
P.O. Box 2088
Santa Fe, New Mexico 87503

Re: MM Fed. No. 11
1500' FSL & 660' FWL
Sec. 30-T9S-R26E
Chaves County, N.M.

Dear Mr. LeMay,

McClellan Oil Corporation requests administrative approval for a non standard Pecos Slope Abo gas well location as provided for under NMOC Rule 104F. This lease is on Federal surface and minerals.

The enclosed topography map shows the sloping terrain surrounding the original proposed location of 1650' FSL & 660' FWL of Sec 30-T9S-R26E. The land surface in the vicinity of the wellsite is on a 1.5 to 2 ft per 100 ft southwest facing slope that drains toward the Pecos River from an elevation of 3676 feet. There are small coppice dunes and drainage gullies from a sand dune hill rising 40 feet to the north.

Due to the large "active" dune we moved the location to the south not only to reduce our construction costs but at the BLM's request. As you can see on the enclosed C-102 the elevations of the corners of the new location differ by as much as 12 feet.

The well was permitted and approved by the BLM's range management. The enclosed lease map shows that the well does not affect offset operators. We have notified the offset operators by certified mail of our request for a non-standard location.

We appreciate your approval for a non-standard location. Should you need more information please contact me.

Sincerely yours,

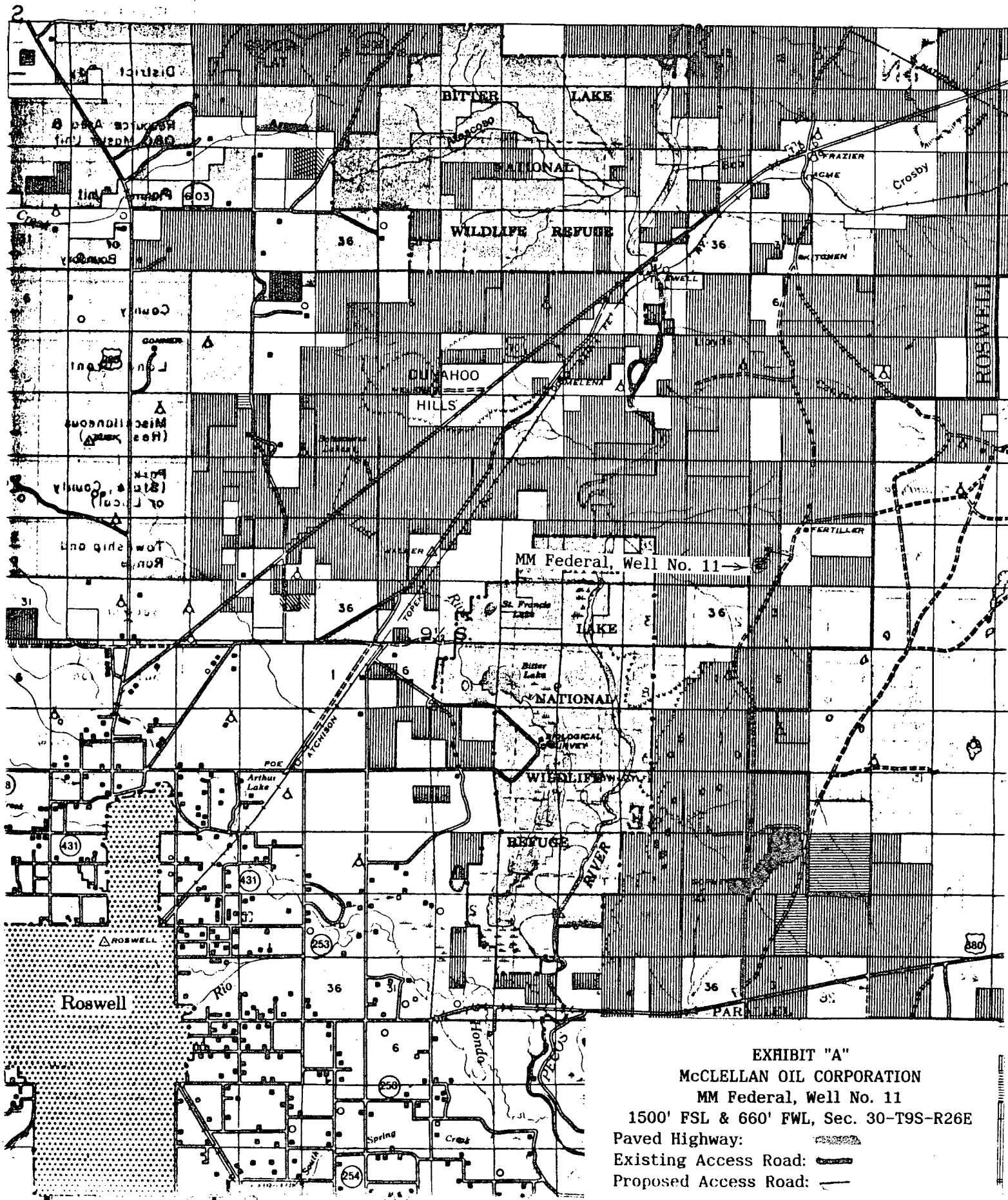
Paul Ragsdale
Operations Manager

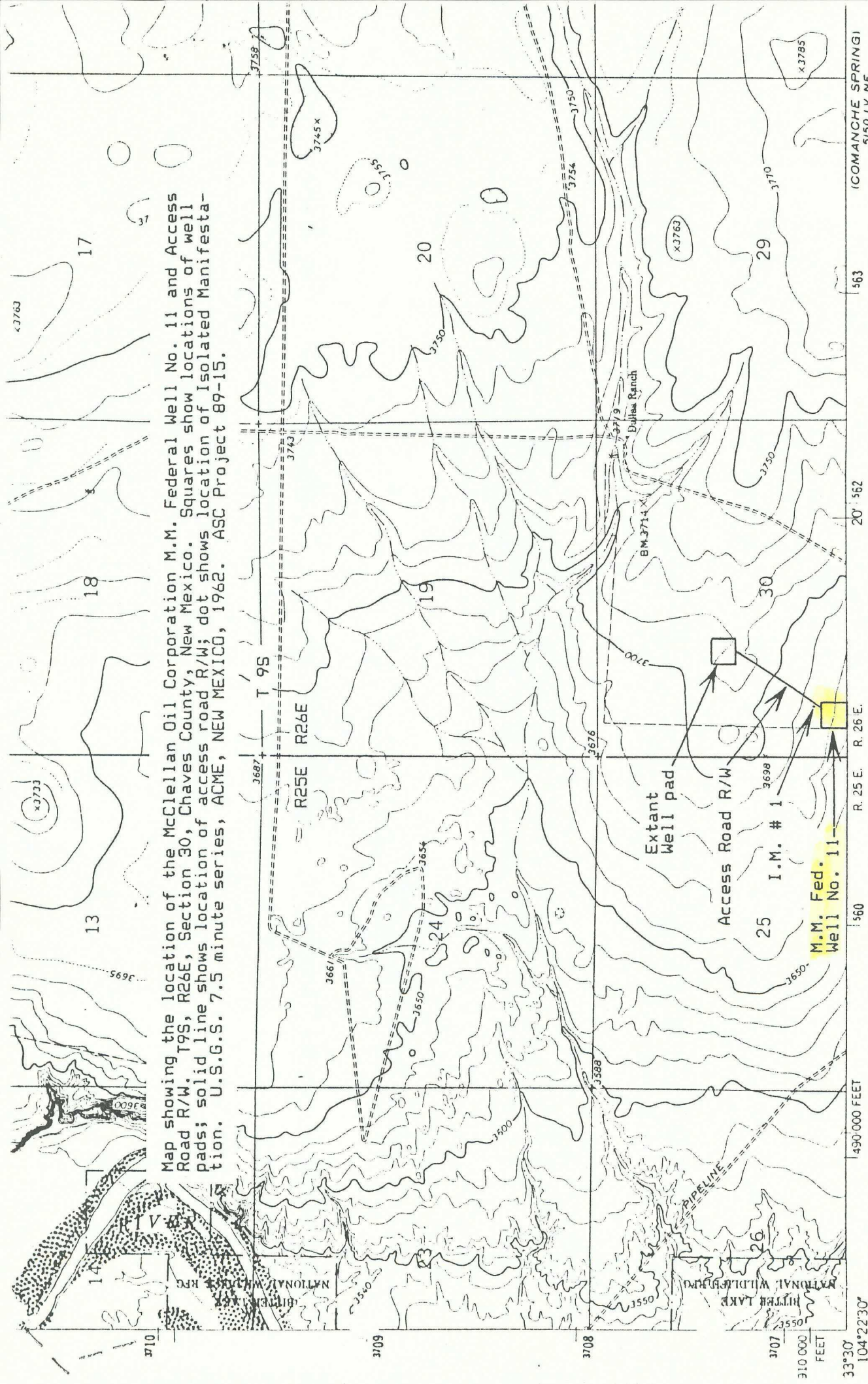
NEW MEXICO

R. 24 E. 4E-3

R. 25 E.

R. 26 E.



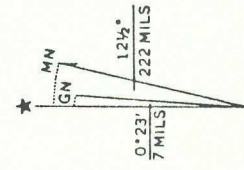


Mapped, edited, and published by the Geological Survey

Control by USGS and USC&GS

Topography by photogrammetric methods from aerial photographs taken 1961. Field checked 1962

Polyconic projection. 1927 North American datum
10 000-foot grid based on New Mexico coordinate system, east zone
1000-meter Universal Transverse Mercator grid ticks, zone 13, shown in blue
Fine red dashed lines indicate selected fence lines



COMANCHE SPRING
S150 1/4 NE

20' 562

R. 25 E. R. 26 E.

490 000 FEET

33°30' 104°22'30"

CONTOUR INTERVAL 10 FEET
DOTTED LINES REPRESENT 5-FOOT CONT
DATUM IS MEAN SEA LEVEL

All distances must be from the outer boundaries of the Section.

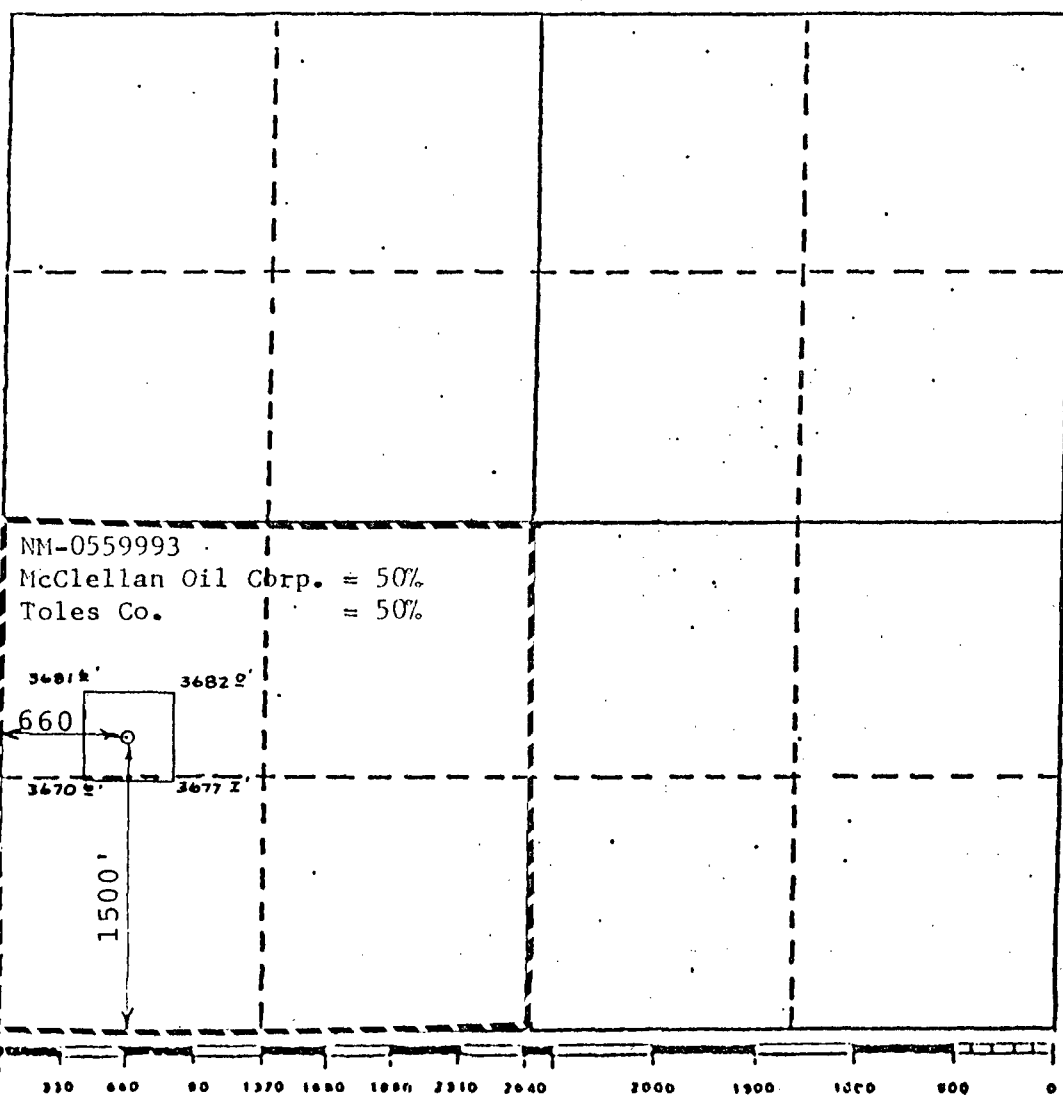
Operator McClellan Oil Corporation			Lease M M Federal		Well No. 11
Unit Letter L	Section 30	Township 9 South	Range 26 East	County Chaves	
Actual Postage Location of Well: 1500 feet from the South line and 660 feet from the West line					
Ground Level Elev. 3676'	Producing Formation Abo		Pool South Pecos Slope Abo		Dedicated Acreage: 160 Acres

1. Outline the acreage dedicated to the subject well by colored pencil or hatchure marks on the plat below.
2. If more than one lease is dedicated to the well, outline each and identify the ownership thereof (both as to working interest and royalty).
3. If more than one lease of different ownership is dedicated to the well, have the interests of all owners been consolidated by communitization, unitization, force-pooling, etc?

☐ Yes ☐ No If answer is "yes," type of consolidation _____

If answer is "no," list the owners and tract descriptions which have actually been consolidated. (Use reverse side of this form if necessary.) _____

No allowable will be assigned to the well until all interests have been consolidated (by communitization, unitization, forced-pooling, or otherwise) or until a non-standard unit, eliminating such interests, has been approved by the Division.



CERTIFICATION

I hereby certify that the information contained herein is true and complete to the best of my knowledge and belief.

George R. Smith

Name
George R. Smith
Position
Agent for:
Company
McClellan Oil Corporation
Date
February 7, 1989

I hereby certify that the well location shown on this plat was plotted from field notes of actual surveys made by me or under my supervision, and that the same is true and correct to the best of my knowledge and belief.

January 17, 1989

Date Surveyed
P. R. Patton
Registered Professional Engineer
and/or Land Surveyor
8112
Certificate No.

