



**Chevron U.S.A. Inc.**  
P.O. Box 670, Hobbs, NM 88240

OIL CONSERVATION DIVISION  
RECEIVED

'90 AUG 3 AM 9 11

R. C. Anderson  
Division Manager  
Production Department  
Hobbs Division

August 2, 1990

PROPOSED INFILL WELLS  
EUNICE MONUMENT SOUTH UNIT  
WELL NOS. 642 AND 679  
LEA COUNTY, NEW MEXICO

New Mexico Oil Conservation Division  
310 Old Santa Fe Trail, Room 206  
Santa Fe, New Mexico 87503

Attention: William J. LeMay, Director

Gentlemen:

The New Mexico District of Chevron U.S.A. Inc. respectfully requests your administrative approval for unorthodox locations for the subject proposed infill producing wells. We further request that you waive the 20 day waiting period requirement of Rule 104 (F) (IV) since the subject proration units of the unorthodox locations are surrounded by proration units operated by Chevron.

The proposed locations for these Eunice Monument South Unit infill producing wells, as shown on the attached map and plats, will be in an existing approved waterflood project, Order No. R-7766 (copy enclosed). These locations will also meet the spacing requirements of Rule 104 (F) (I) which states that a well will be no closer than 330 feet to the outer boundary of the unitized area, and no closer than 10 feet to any quarter-quarter section line. In addition, the locations were chosen to be within the 40-acre proration units now associated with water injection wells. The basis for these two unorthodox infill locations is to more efficiently produce an area of "banked oil" running northwest to southeast along the western portion of the Eunice Monument South Unit.

Chevron has notified all working interest owners in the Eunice Monument South Unit and expects to receive sufficient approval by mid-August, thereby satisfying Unit Operating Agreement requirements. Also, all directly offsetting unit wells, completed in the Eunice Monument Oil Pool, and their respective proration units to the proposed infill wells are operated by Chevron.

Based upon the foregoing information, Chevron requests your administrative approval of the attached applications for permits to drill these two subject infill wells at their unorthodox locations. To enable Chevron to drill these proposed infill wells this quarter, we are further requesting that the Oil Conservation Division waive the 20 day waiting requirements in granting these administrative applications.

For further information regarding this matter, please contact A. W. Bohling or D. L. Hendrix at (505) 393-4121. Your prompt consideration will be greatly appreciated.

Yours very truly,

  
R. C. ANDERSON

DLH/AWB/pf 08020/01

Attachments

cc: Oil Conservation Division  
District 1  
P. O. Box 1980  
Hobbs, New Mexico 88240  
Attn: Mr. Jerry T. Sexton

Kellahin, Kellahin and Aubrey  
Attorneys at Law  
P. O. Box 2265  
Santa Fe, New Mexico 87504-2265  
Attn: Mr. Tom Kellahin

UNITED STATES  
DEPARTMENT OF THE INTERIOR  
GEOLOGICAL SURVEY

## APPLICATION FOR PERMIT TO DRILL, DEEPEN, OR PLUG BACK

## 1a. TYPE OF WORK

DRILL ☒DEEPEN ☐PLUG BACK ☐

## b. TYPE OF WELL

OIL  
WELL ☒GAS  
WELL ☐

OTHER

SINGLE  
ZONE ☐MULTIPLE  
ZONE ☐

## 2. NAME OF OPERATOR

Chevron U.S.A. Inc.

## 3. ADDRESS OF OPERATOR

P.O. Box 670, Hobbs, NM 88240

## 4. LOCATION OF WELL (Report location clearly and in accordance with any State requirements.)\*

At surface

1220' FNL &amp; 1220' FWL Unit D

At proposed prod. zone

## 14. DISTANCE IN MILES AND DIRECTION FROM NEAREST TOWN OR POST OFFICE\*

## 15. DISTANCE FROM PROPOSED\*

LOCATION TO NEAREST  
PROPERTY OR LEASE LINE, FT.  
(Also to nearest drlg. unit line, if any)18. DISTANCE FROM PROPOSED LOCATION\*  
TO NEAREST WELL, DRILLING, COMPLETED,  
OR APPLIED FOR, ON THIS LEASE, FT.

## 21. ELEVATIONS (Show whether DF, RT, GR, etc.)

3585.5'

## 16. NO. OF ACRES IN LEASE

14,280

## 19. PROPOSED DEPTH

4350'

17. NO. OF ACRES ASSIGNED  
TO THIS WELL

40

## 20. ROTARY OR CABLE TOOLS

Rotary

## 22. APPROX. DATE WORK WILL START\*

8-1-90

## 23.

## PROPOSED CASING AND CEMENTING PROGRAM

SIZE OF HOLE	SIZE OF CASING	WEIGHT PER FOOT	SETTING DEPTH	QUANTITY OF CEMENT
12 1/4"	8 5/8"	24#	1400'	800 sx Circ.
7 7/8"	5 1/2"	15.50#	4350'	500 sx Circ.

## MUD PROGRAM:

0 - 1400' FW SPUD

1400 - 4350' BRINE WATER STARCH, 10 PPG, 31 VIS, 9 PH

## BOP EQUIPMENT:

3000 PSI WORKING PRESSURE (SEE ATTACHED CHEVRON CLASS III DRAWING)

IN ABOVE SPACE DESCRIBE PROPOSED PROGRAM: If proposal is to deepen or plug back, give data on present productive zone and proposed new productive zone. If proposal is to drill or deepen directionally, give pertinent data on subsurface locations and measured and true vertical depths. Give blowout preventer program, if any.

## 24.

SIGNED

*M. E. Shinn* 7/18/90

TITLE Staff Drlg. Engr.

DATE 7-18-90

(This space for Federal or State office use)

PERMIT NO. \_\_\_\_\_

APPROVAL DATE \_\_\_\_\_

APPROVED BY \_\_\_\_\_

TITLE \_\_\_\_\_

DATE \_\_\_\_\_

CONDITIONS OF APPROVAL, IF ANY:

\*See Instructions On Reverse Side

Submit to Appropriate  
District Office  
State Lease - 4 copies  
Fee Lease - 3 copies

State of New Mexico  
Energy, Minerals and Natural Resources Department

Form C-102  
Revised 1-1-89

OIL CONSERVATION DIVISION

P.O. Box 2088  
Santa Fe, New Mexico 87504-2088

DISTRICT I  
P.O. Box 1980, Hobbs, NM 88240

DISTRICT II  
P.O. Drawer DD, Artesia, NM 88210

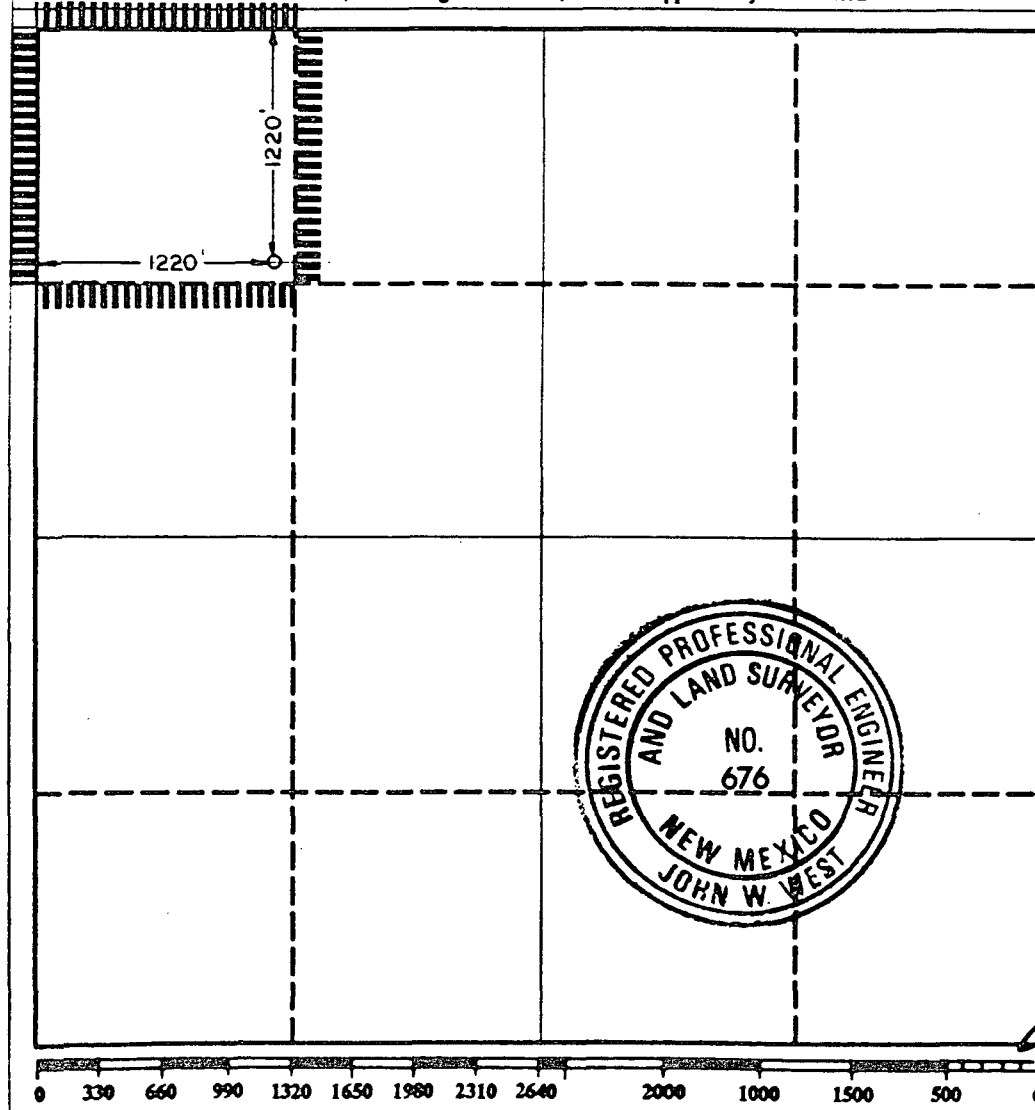
DISTRICT III  
1000 Rio Brazos Rd., Aztec, NM 87410

WELL LOCATION AND ACREAGE DEDICATION PLAT

All Distances must be from the outer boundaries of the section

Operator CHEVRON USA, INC		Lease EMSU		Well No. 679
Unit Letter D	Section 8	Township 21 SOUTH	Range 36 EAST	County LEA
Actual Footage Location of Well: 1220 feet from the NORTH line and 1220 feet from the WEST line				
Ground level Elev. 3585.5'	Producing Formation Grayburg	Pool Eunice Monument	Dedicated Acreage: 40 Acres	

- Outline the acreage dedicated to the subject well by colored pencil or hatchure marks on the plat below.
- If more than one lease is dedicated to the well, outline each and identify the ownership thereof (both as to working interest and royalty).
- If more than one lease of different ownership is dedicated to the well, have the interest of all owners been consolidated by communitization, unitization, force-pooling, etc?  
☐ Yes ☐ No If answer is "yes" type of consolidation \_\_\_\_\_  
If answer is "no" list the owners and tract descriptions which have actually been consolidated. (Use reverse side of this form if necessary.)  
No allowable will be assigned to the well until all interests have been consolidated (by communitization, unitization, forced-pooling, or otherwise) or until a non-standard unit, eliminating such interest, has been approved by the Division.



OPERATOR CERTIFICATION

I hereby certify that the information contained herein is true and complete to the best of my knowledge and belief.

Signature  
*M. E. Akins*  
Printed Name  
M. E. Akins  
Position  
Staff Drlg. Engr.  
Company  
Chevron U.S.A. Inc.  
Date  
7-18-90

SURVEYOR CERTIFICATION

I hereby certify that the well location shown on this plat was plotted from field notes of actual surveys made by me or under my supervision, and that the same is true and correct to the best of my knowledge and belief.

Date Surveyed  
July 12, 1990  
Signature & Seal of  
Professional Surveyor  
*John W. West*  
Certificate No. JOHN W. WEST, 676  
RONALD J. EIDSON, 3239

# NOTICE OF STAKING

(Not to be used in place of Application for Permit to Drill Form 3160-3)

1. Oil Well <input checked="" type="checkbox"/> Gas Well <input type="checkbox"/> Other <input type="checkbox"/> (Specify)		6. Lease Number LC 031740-B	
2. Name of Operator: CHEVRON USA INC.		7. If Indian, Allottee or Tribe Name	
3. Name of Specific Contact Person: ME AKINS		8. Unit Agreement Name	
4. Address & Phone No. of Operator or Agent P.O. Box 670 Hobbs, NM 88240 Tel: 505-393-4121		9. Farm or Lease Name EUNICE MONUMENT SOUTH UNIT	
5. Surface Location of Well 1220' FNL & 1220' FWL Attach: a) Sketch showing road entry into pad, pad dimensions, and reserve pit. b) Topographical or other acceptable map showing location, access road, and lease boundaries.		10. Well No. 679	
		11. Field or Wildcat Name EUNICE MONUMENT	
		12. Sec., T., R., M., or Blk and Survey or Area SECTION 8 T21S R36E UNIT D	
15. Formation Objective(s)	16. Estimated Well Depth 4350'	13. County, Parish or Borough LEA	14. State NM

17. Additional Information (as appropriate; must include surface owner's name, address, and telephone number).

Road & Location will be Agreed Upon with Land Owner

18. Signed M. E. Akins Title STAFF DRILLING ENGINEER Date 7-18-90

Note: Upon receipt of this Notice, the Bureau of Land Management (BLM) will schedule the date of the onsite predrill inspection and notify you accordingly. The location must be staked and access road must be flagged prior to the onsite.

Operators must consider the following prior to the onsite:

- a) H2S Potential
- b) Cultural Resources (Archeology)
- c) Federal Right of Way or Special Use Permit

Submit to Appropriate  
District Office  
State Lease - 6 copies  
Fee Lease - 5 copies

State of New Mexico  
Energy, Minerals and Natural Resources Department

Form C-101  
Revised 1-1-89

DISTRICT I  
P.O. Box 1980, Hobbs, NM 88240

DISTRICT II  
P.O. Drawer DD, Artesia, NM 88210

DISTRICT III  
1000 Rio Brazos Rd., Aztec, NM 87410

OIL CONSERVATION DIVISION  
P.O. Box 2088  
Santa Fe, New Mexico 87504-2088

API NO. (assigned by OCD on New Wells)

5. Indicate Type of Lease

STATE ☐

FEE ☒

6. State Oil & Gas Lease No.

APPLICATION FOR PERMIT TO DRILL, DEEPEN, OR PLUG BACK

1a. Type of Work:

DRILL ☒

RE-ENTER ☐

DEEPEN ☐

PLUG BACK ☐

b. Type of Well:

OIL  
WELL ☒

GAS  
WELL ☐

OTHER ☐

SINGLE  
ZONE ☐

MULTIPLE  
ZONE ☐

7. Lease Name or Unit Agreement Name

Eunice Monument South Unit

2. Name of Operator

Chevron U.S.A. Inc.

8. Well No.

642

3. Address of Operator

P.O. Box 670, Hobbs, NM 88240

9. Pool name or Wildcat

Eunice Monument/Grayburg

4. Well Location

Unit Letter Q : 1370 Feet From The South Line and 25 Feet From The East Line  
Section 6 Township 21S Range 36E NMPM Lea County

10. Proposed Depth  
4200'

11. Formation  
Grayburg

12. Rotary or C.T.  
Rotary

13. Elevations (Show whether DF, RT, GR, etc.)  
3578.0'

14. Kind & Status Plug. Bond  
Blanket

15. Drilling Contractor  
Unknown

16. Approx. Date Work will start  
8-1-90

17. PROPOSED CASING AND CEMENT PROGRAM

SIZE OF HOLE	SIZE OF CASING	WEIGHT PER FOOT	SETTING DEPTH	SACKS OF CEMENT	EST. TOP
12 1/4	8 5/8	24#	1400'	800 sx	Circ.
7 7/8	5 1/2	15.50#	4200'	500 sx	Circ.

MUD PROGRAM: 0-1400 FW SPUD  
1400-4200 BRINE WATER STARCH, 10 PPG, 31 VIS, 9 PH  
BOP EQUIPMENT: 3000 PSI WORKING PRESSURE (SEE ATTACHED DRAWING)

\*20 ACRES IN FILL WELL

IN ABOVE SPACE DESCRIBE PROPOSED PROGRAM: IF PROPOSAL IS TO DEEPEN OR PLUG BACK, GIVE DATA ON PRESENT PRODUCTIVE ZONE AND PROPOSED NEW PRODUCTIVE ZONE. GIVE BLOWOUT PREVENTER PROGRAM, IF ANY.

I hereby certify that the information above is true and complete to the best of my knowledge and belief.

SIGNATURE M. E. Akins 7/18/90 TITLE Staff Drlg. Engr. DATE 7-16-90

TYPE OR PRINT NAME M. E. Akins TELEPHONE NO. 393-4121

(This space for State Use)

APPROVED BY \_\_\_\_\_ TITLE \_\_\_\_\_ DATE \_\_\_\_\_

CONDITIONS OF APPROVAL, IF ANY:

**NEW MEXICO OIL CONSERVATION COMMISSION  
WELL LOCATION AND ACREAGE DEDICATION PLAT**

Form C-102  
Supersedes C-128  
Effective 1-1-65

All distances must be from the outer boundaries of the Section. \*20 ACRES IN FILL WELL

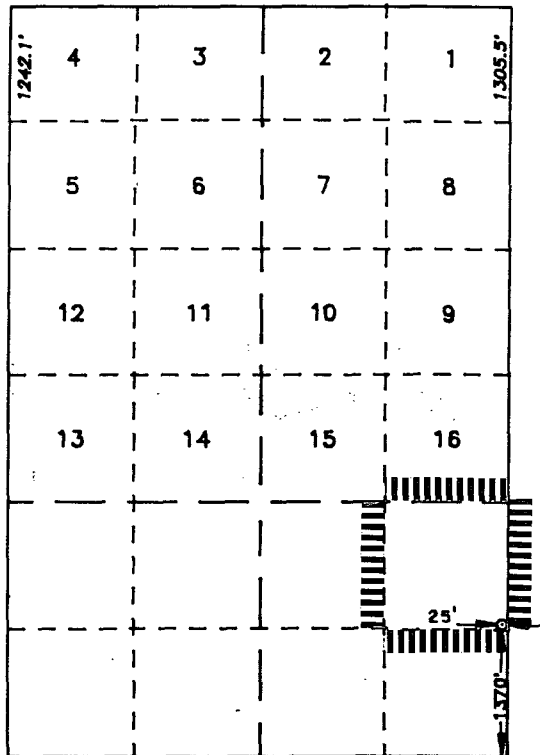
Operator <b>CHEVRON USA, INC</b>			Lease <b>EMSU</b>		Well No. <b>642</b>
Unit Letter <b>Q</b>	Section <b>6</b>	Township <b>21 SOUTH</b>	Range <b>36 EAST</b>	County <b>LEA</b>	
Actual Footage Location of Well: <div style="display: flex; justify-content: space-between;"> <span>1370 feet from the <b>SOUTH</b> line and</span> <span>25 feet from the <b>EAST</b> line</span> </div>					
Ground Level Elev. <b>3578.0'</b>	Producing Formation <b>Grayburg</b>	Pool <b>Eunice Monument</b>		Dedicated Acreage: <b>40</b> Acres	

1. Outline the acreage dedicated to the subject well by colored pencil or hachure marks on the plat below.
2. If more than one lease is dedicated to the well, outline each and identify the ownership thereof (both as to working interest and royalty).
3. If more than one lease of different ownership is dedicated to the well, have the interests of all owners been consolidated by communitization, unitization, force-pooling, etc?

☐ Yes   ☐ No   If answer is "yes," type of consolidation \_\_\_\_\_

If answer is "no," list the owners and tract descriptions which have actually been consolidated. (Use reverse side of this form if necessary.) \_\_\_\_\_

No allowable will be assigned to the well until all interests have been consolidated (by communitization, unitization, forced-pooling, or otherwise) or until a non-standard unit, eliminating such interests, has been approved by the Commission.



**SCALE**  
1" = 2000'

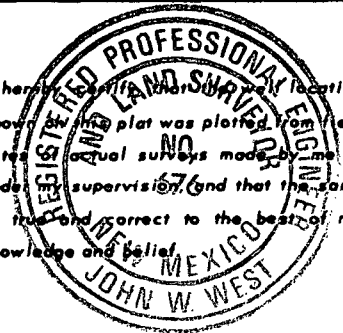
**CERTIFICATION**

I hereby certify that the information contained herein is true and complete to the best of my knowledge and belief.

*M. E. Akins 7/18/90*


Name <b>M. E. Akins</b>
Position <b>Staff Drlg. Engr.</b>
Company <b>Chevron U.S.A. Inc.</b>
Date <b>7-18-90</b>

I hereby certify that the well location shown on this plat was plotted from field notes of actual surveys made by me or under my supervision, and that the same is true and correct to the best of my knowledge and belief.



Date Surveyed <b>July 17, 1990</b>
Registered Professional Engineer and/or Land Surveyor <i>John W. West</i>
Certificate No. <b>JOHN W. WEST 676</b>
<b>Ronald J. Eldson 3239</b>

PROPOSED Location EMSU #642



Chevron USA, Inc.  
Central Region - Exploration, Land and Production

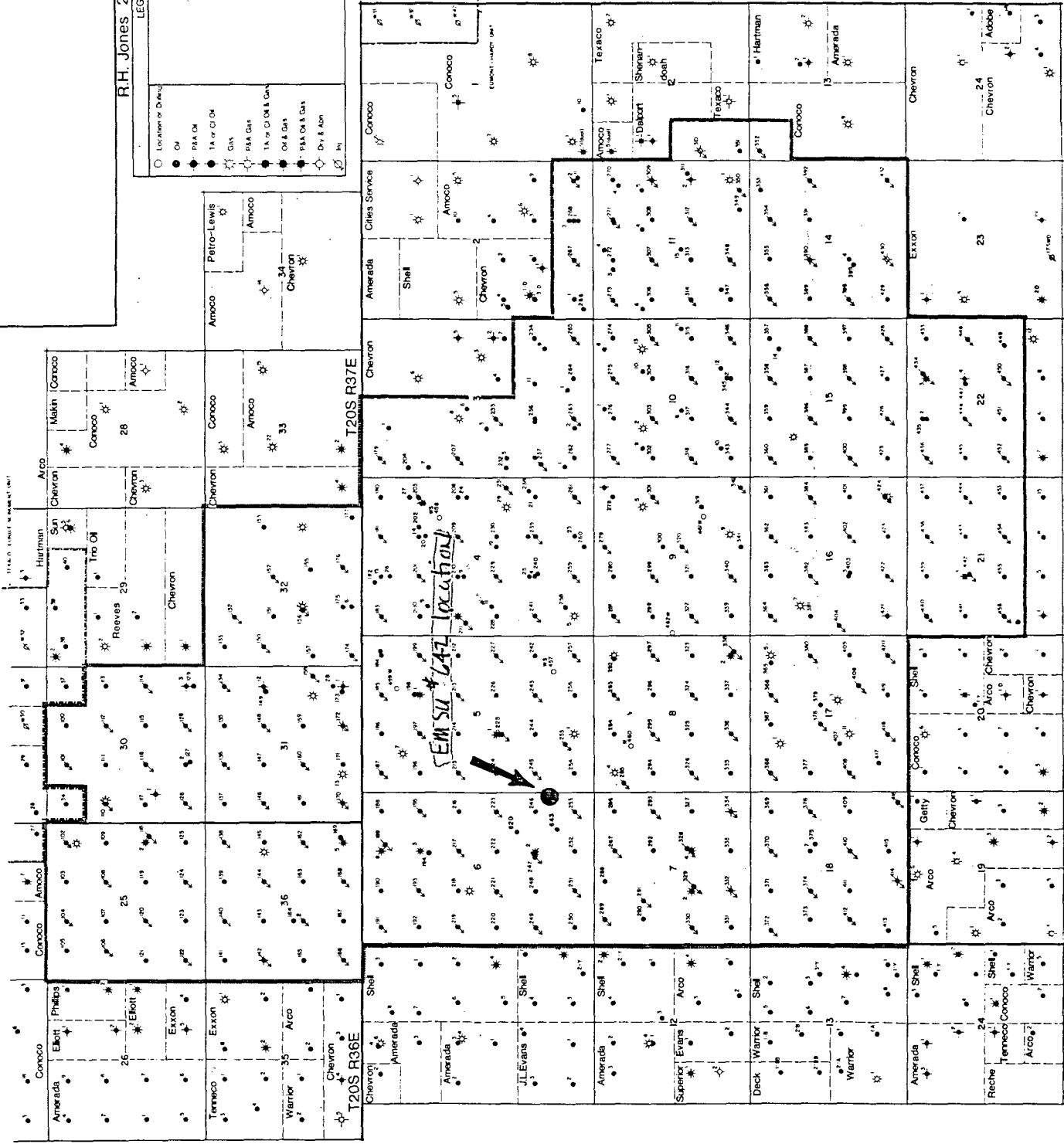
### EUNICE MONUMENT SOUTH UNIT

LEA COUNTY, NEW MEXICO

R.H. Jones 2/89

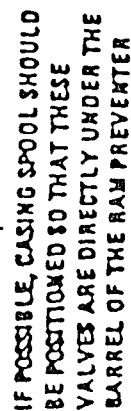
LEGEND

- Location of Drilling
- Oil
- PSA Oil
- 1A or 2 Oil
- Gas
- PSA Gas
- 1A or 2 Oil & Gas
- Oil & Gas
- PSA Oil & Gas
- Dry & Air
- Inj





CLASS THREE PREVENTER

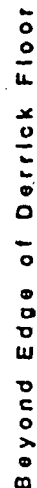


The blowout preventer shall be supplied up ahead and a spare set of drill pipe tool joints shall be on location. The ram pressure may be two times or more than the rated operating pressure available on the side of the well, then they may be used for connecting the choke line up, and the kill line up, a set of extra tool joints will be required on location at all time for all flowline work.

The substructure height shall be sufficient to install a rotating blowout preventer. The blowout preventer shall be equipped with such tools as are necessary for controlling the well during a well shut-in. The blowout preventer shall be capable of withstanding the maximum pressure to rated pressure without damage. The minimum nitrogen precharge pressure shall be equal to three times the rated pressure listed in the manufacturer's manual. The remaining accumulator pressure shall be maintained within 10% after closure. The remaining accumulator pressure shall be controlled by means of a remote closing manifold located on the rig floor shall be accessible. The closing manifold and remote shall have a separate control for each pressure-operated device. Controls are to be limited as to device and opened or closed. A pressure reducer will be provided for operation by the smaller pressure. All lines from the blowout preventer to the wellhead shall be secured to the rig floor, the distance is specified in contract. Hydraulic fluid must meet API-13 specifications.

The choke manifold and all lines are to be supported by steel stands and securely anchored. The choke flow line, relief lines and chase lines shall be as straight as possible and without sharp turns.

The choke flow line valves and kill line valves and all ram preventors must be equipped with stem turning universal plates if needed, and hand wheels which extend beyond the edge of the substructure constructed to facilitate easy operation from outside the substructure. All other valves shall be equipped with handles.



CHEVRON U.S.A. INC.  
Harry Leonard (NCT-C) Lease

Application For An Unorthodox  
Gas Well Location  
and  
Simultaneous Dedication of Acreage  
Eumont (Pro Gas) Pool  
660' FNL and 660' FWL  
Section 36, T21S, R36E  
Lea County, New Mexico

---

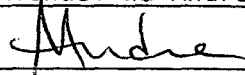
WAIVER TO OBJECTION

---

We, the undersigned, as an offset operator, waive any objection to Chevron U.S.A. Inc.'s application for NMOCD approval of an Unorthodox Gas Well Location in the Eumont (Pro Gas) Pool. This well is located 660' FNL and 660' FWL, Section 36, T-21-S, R-36-E, NMPPM, Lea County, New Mexico. We understand that this 320 acre proration unit will be simultaneously dedicated to the Harry Leonard (NCT-C) Wells No. 4, 7, 8 and 9 located in unit letters D, G, H and B, respectively, of Section 36.

Company: Exxon Co., U.S.A.

Representative: Michael W. Andrews

Signature: 

Title: Regulatory Compliance Supv.

Date: 8/7/90

OIL CONSERVATION DIVISION  
RECEIVED

'90 AUG 13 AM 8 43

CHEVRON U.S.A. INC.  
Harry Leonard (NCT-C) Lease

Application For An Unorthodox  
Gas Well Location  
and  
Sumultaneous Dedication of Acreage  
Eumont (Pro Gas) Pool  
660' FNL and 660' FWL  
Section 36, T21S, R36E  
Lea County, New Mexico

---

WAIVER TO OBJECTION

We, the undersigned, as an offset operator, waive any objection to Chevron U.S.A. Inc.'s application for NMOCD approval of an Unorthodox Gas Well Location in the Eumont (Pro Gas) Pool. This well is located 660' FNL and 660' FWL, Section 36, T-21-S, R-36-E, NMPM, Lea County, New Mexico. We understand that this 320 acre proration unit will be simultaneously dedicated to the Harry Leonard (NCT-C) Wells No. 4, 7, 8 and 9 located in unit letters D, G, H and B, respectively, of Section 36.

Company: OXY USA INC.  
Representative: Richard E. Foppiano  
Signature: Richard E. Foppiano  
Title: Regulatory Affairs Advisor  
Date: 8-9-90



STATE OF NEW MEXICO  
ENERGY AND MINERALS DEPARTMENT  
OIL CONSERVATION DIVISION  
HOBBS DISTRICT OFFICE  
30 AUG 1980 AM 9 09

GARREY CARRUTHERS  
GOVERNOR

POST OFFICE BOX 1980  
HOBBS, NEW MEXICO 88241-1980  
(505) 393-6161

OIL CONSERVATION DIVISION  
P. O. BOX 2088  
SANTA FE, NEW MEXICO 87501

RE: Proposed:

MC \_\_\_\_\_  
DHC \_\_\_\_\_  
NSL ☒ \_\_\_\_\_  
NSP \_\_\_\_\_  
SWD \_\_\_\_\_  
WFX \_\_\_\_\_  
PMX \_\_\_\_\_

Gentlemen:

I have examined the application for the:

Chevron USA Inc. Eunice Monument South Unit # 642-Q 6-21-36  
Operator Lease & Well No. Unit S-T-R # 679-D 8-21-36

and my recommendations are as follows:

*OK*

Yours very truly,

*Jerry Sexton*  
Jerry Sexton  
Supervisor, District 1

/ed