

UNITED STATES  
DEPARTMENT OF THE INTERIOR  
BUREAU OF LAND MANAGEMENT

## APPLICATION FOR PERMIT TO DRILL, DEEPEN, OR PLUG BACK

## 1a. TYPE OF WORK

DRILL ☐DEEPEN ☐PLUG BACK ☒

## b. TYPE OF WELL

OIL  
WELL ☐GAS  
WELL ☒

OTHER

SINGLE  
ZONE ☒MULTIPLE  
ZONE ☐

## 2. NAME OF OPERATOR

Meridian Oil Inc.

## 3a. AREA CODE &amp; PHONE NO.

915-686-5600

## 3. ADDRESS OF OPERATOR

21 Desta Dr., Midland, TX 79705

## 4. LOCATION OF WELL (Report location clearly and in accordance with any State requirements.)\*

At surface

480' FNL &amp; 990' FWL

At proposed prod. zone

Same

## 14. DISTANCE IN MILES AND DIRECTION FROM NEAREST TOWN OR POST OFFICE\*

3.4 miles southeast of Jal, NM

15. DISTANCE FROM PROPOSED\*  
LOCATION TO NEAREST  
PROPERTY OR LEASE LINE, FT.  
(Also to nearest drlg. unit line, if any)

480'

## 16. NO. OF ACRES IN LEASE

640

17. NO. OF ACRES ASSIGNED  
TO THIS WELL

160

18. DISTANCE FROM PROPOSED LOCATION\*  
TO NEAREST WELL, DRILLING, COMPLETED,  
OR APPLIED FOR, ON THIS LEASE, FT.

1300'

## 19. PROPOSED DEPTH

3020'

## 20. ROTARY OR CABLE TOOLS

This is a plug back.

## 21. ELEVATIONS (Show Whether DF, RT, GR, ETC.)

2999' DF.

## 22. APPROX. DATE WORK WILL START \*

8/24/90

## 23. PROPOSED CASING AND CEMENTING PROGRAM

HOLE SIZE	CASING SIZE	WEIGHT/FOOT	GRADE	THREAD TYPE	SETTING DEPTH	QUANTITY OF CEMENT
12-1/4"	8-5/8"	24#			331'	300 sx-Circ.
7-7/8"	5-1/2"	14#			3289'	250 sx-TOC
						2260'

The present productive zone is the Queen (perforated 3216'-3241'). It was originally completed in 1961. PLANS: Set a CIBP at 3050' and dump bail 30' of cement on top by wireline. Proposed Yates perforations are 2790'-2920'. The top of the Yates is 2614' and the top of the Seven Rivers is 2857' by electric logs. Planned stimulation is 40,000 gallons of CO2 foam with 100,000# sand pumped through 2-7/8" tubing with a treating packer set @2700'.

IN ABOVE SPACE DESCRIBE PROPOSED PROGRAM: If proposal is to deepen or plug back, give data on present productive zone and proposed new productive zone. If proposal is to drill or deepen directionally, give pertinent data on subsurface locations and measured and true vertical depths. Give blowout preventer program, if any.

24.

SIGNED

*Robert L. Bradshaw*

TITLE

Sr. Staff Env./Reg. Spec.

DATE

10 August 1990

(This space for Federal or State office use)

PERMIT NO.

APPROVAL DATE

APPROVED BY

TITLE

DATE

CONDITIONS OF APPROVAL, IF ANY:

\*See Instructions On Reverse Side

RECEIVED  
AUG 13 8 19 AM '90  
CARLTON PRODUCTION  
AREA HEADQUARTERS

**UNITED STATES**  
**DEPARTMENT OF THE INTERIOR**  
**BUREAU OF LAND MANAGEMENT**

CONTACT RECEIVING  
OFFICE FOR NUMBER  
OF COPIES REQUIRED  
(Other instructions on  
reverse side)

BLM Roswell District  
Modified Form No.  
NM060-3160-2

**APPLICATION FOR PERMIT TO DRILL, DEEPEN, OR PLUG BACK**

1a. TYPE OF WORK

DRILL ☐

DEEPEN ☐

PLUG BACK ☒

b. TYPE OF WELL

OIL  
WELL ☐

GAS  
WELL ☒

OTHER

SINGLE  
ZONE ☒

MULTIPLE  
ZONE ☐

2. NAME OF OPERATOR

Meridian Oil Inc.

3a. AREA CODE & PHONE NO.

915-686-5600

3. ADDRESS OF OPERATOR

21 Desta Dr., Midland, TX 79705

4. LOCATION OF WELL (Report location clearly and in accordance with any State requirements.\*)

At surface

480' FNL & 990' FWL

At proposed prod. zone

Same

14. DISTANCE IN MILES AND DIRECTION FROM NEAREST TOWN OR POST OFFICE\*

3.4 miles southeast of Jal, NM

15. DISTANCE FROM PROPOSED\*

LOCATION TO NEAREST  
PROPERTY OR LEASE LINE, FT.  
(Also to nearest drlg. unit line, if any)

480'

16. NO. OF ACRES IN LEASE

640

17. NO. OF ACRES ASSIGNED  
TO THIS WELL

160

18. DISTANCE FROM PROPOSED LOCATION\*  
TO NEAREST WELL, DRILLING, COMPLETED,  
OR APPLIED FOR, ON THIS LEASE, FT.

1300'

19. PROPOSED DEPTH

3020'

20. ROTARY OR CABLE TOOLS

This is a plug back.

21. ELEVATIONS (Show Whether DF, RT, GR, ETC.)

2999' DF.

22. APPROX. DATE WORK WILL START \*

8/24/90

23. PROPOSED CASING AND CEMENTING PROGRAM

HOLE SIZE	CASING SIZE	WEIGHT/FOOT	GRADE	THREAD TYPE	SETTING DEPTH	QUANTITY OF CEMENT
12-1/4"	8-5/8"	24#			331'	300 sx-Circ.
7-7/8"	5-1/2"	14#			3289'	250 sx-TOC
						2260'

The present productive zone is the Queen (perforated 3216'-3241'). It was originally completed in 1961.  
PLANS: Set a CIBP at 3050' and dump bail 30' of cement on top by wireline. Proposed Yates perforations are 2790'-2920'. The top of the Yates is 2614' and the top of the Seven Rivers is 2857' by electric logs. Planned stimulation is 40,000 gallons of CO2 foam with 100,000# sand pumped through 2-7/8" tubing with a treating packer set @2700'.

RECEIVED  
Aug 13 8 19 AM '90  
CARLTON PRODUCTION  
AREA HEADQUARTERS

IN ABOVE SPACE DESCRIBE PROPOSED PROGRAM: If proposal is to deepen or plug back, give data on present productive zone and proposed new productive zone. If proposal is to drill or deepen directionally, give pertinent data on subsurface locations and measured and true vertical depths. Give blowout preventer program, if any.

24.

SIGNED

*Robert L. Bradshaw*

TITLE

Sr. Staff Env./Reg. Spec.

DATE

10 August 1990

(This space for Federal or State office use)

PERMIT NO.

APPROVAL DATE

APPROVED BY

TITLE

DATE

8-14-90

CONDITIONS OF APPROVAL, IF ANY:

\*See Instructions On Reverse Side

Submit to Appropriate  
District Office  
State Lease - 4 copies  
Fee Lease - 3 copies

State of New Mexico  
Energy, Minerals and Natural Resources Department

Form C-102  
Revised 1-1-89

**OIL CONSERVATION DIVISION**

P.O. Box 2088  
Santa Fe, New Mexico 87504-2088

**DISTRICT I**  
P.O. Box 1980, Hobbs, NM 88240

**DISTRICT II**  
P.O. Drawer DD, Artesia, NM 88210

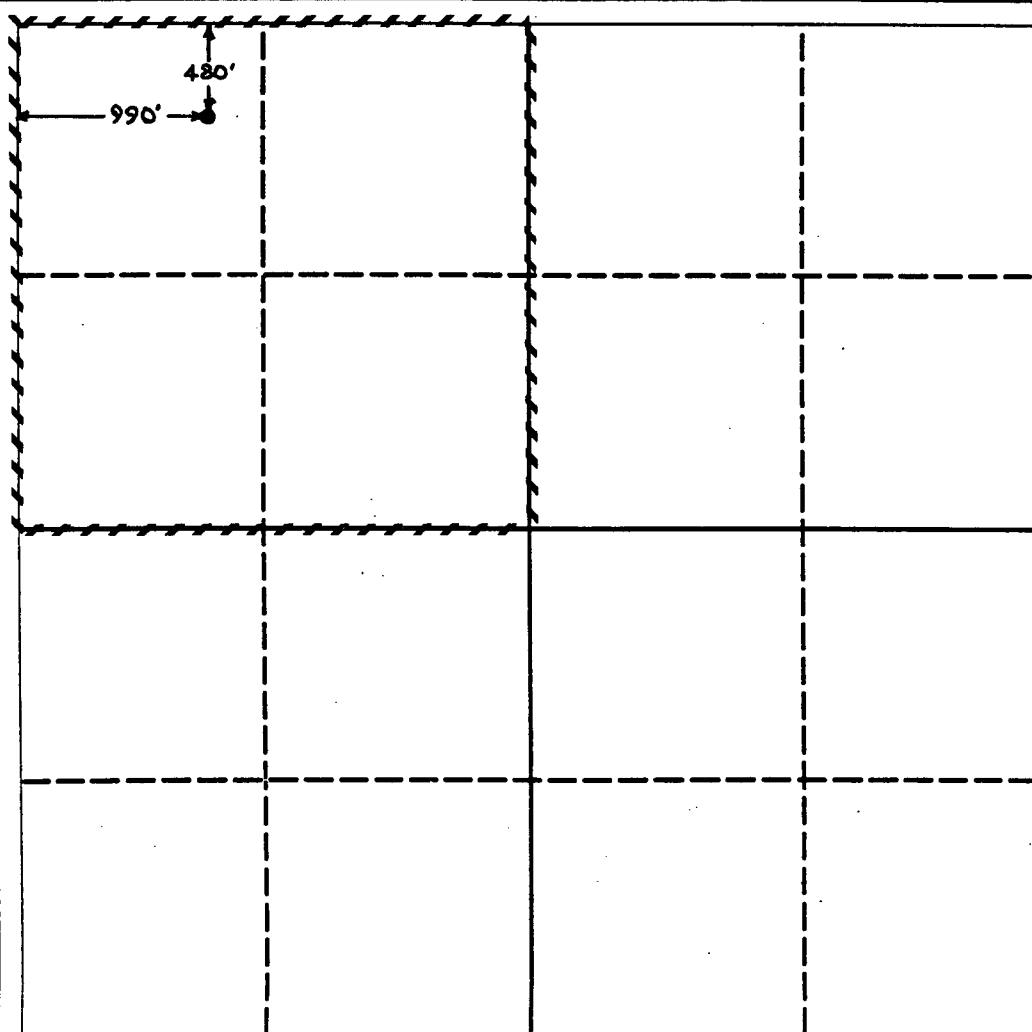
**DISTRICT III**  
1000 Rio Brazos Rd., Aztec, NM 87410

**WELL LOCATION AND ACREAGE DEDICATION PLAT**

All Distances must be from the outer boundaries of the section

Operator <b>MERIDIAN OIL INC.</b>			Lease <b>FARNSWORTH "4"</b>		Well No. <b>11</b>
Unit Letter <b>D</b>	Section <b>4</b>	Township <b>26 SOUTH</b>	Range <b>37 EAST</b>	County <b>LEA</b>	
Actual Footage Location of Well: <b>480</b> feet from the <b>north</b> line and <b>990</b> feet from the <b>west</b> line					
Ground level Elev.	Producing Formation <b>YATES</b>		Pool <b>RHODES (YATES, 7 RIVERS)</b>		Dedicated Acreage: <b>160</b> Acres

1. Outline the acreage dedicated to the subject well by colored pencil or hatchure marks on the plat below.
2. If more than one lease is dedicated to the well, outline each and identify the ownership thereof (both as to working interest and royalty).
3. If more than one lease of different ownership is dedicated to the well, have the interest of all owners been consolidated by communitization, unitization, force-pooling, etc?  
☐ Yes ☐ No If answer is "yes" type of consolidation \_\_\_\_\_  
If answer is "no" list the owners and tract descriptions which have actually been consolidated. (Use reverse side of this form if necessary). \_\_\_\_\_  
No allowable will be assigned to the well until all interests have been consolidated (by communitization, unitization, forced-pooling, or otherwise) or until a non-standard unit, eliminating such interest, has been approved by the Division.



**OPERATOR CERTIFICATION**

I hereby certify that the information contained herein is true and complete to the best of my knowledge and belief.

Signature

Printed Name

**Robert L. Bradshaw**

Position

**Sr. Staff Env./Reg. Spec.**

Company

**Meridian Oil Inc.**

Date

**10 August 1990**

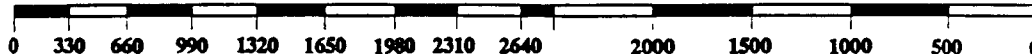
**SURVEYOR CERTIFICATION**

I hereby certify that the well location shown on this plat was plotted from field notes of actual surveys made by me or under my supervision, and that the same is true and correct to the best of my knowledge and belief.

Date Surveyed

Signature & Seal of  
Professional Surveyor

Certificate No.



Submit to Appropriate  
District Office  
State Lease - 4 copies  
Fee Lease - 3 copies

State of New Mexico  
Energy, Minerals and Natural Resources Department

Form C-102  
Revised 1-1-89

**OIL CONSERVATION DIVISION**

**DISTRICT I**  
P.O. Box 1980, Hobbs, NM 88240

P.O. Box 2088

Santa Fe, New Mexico 87504-2088

**DISTRICT II**  
P.O. Drawer DD, Artesia, NM 88210

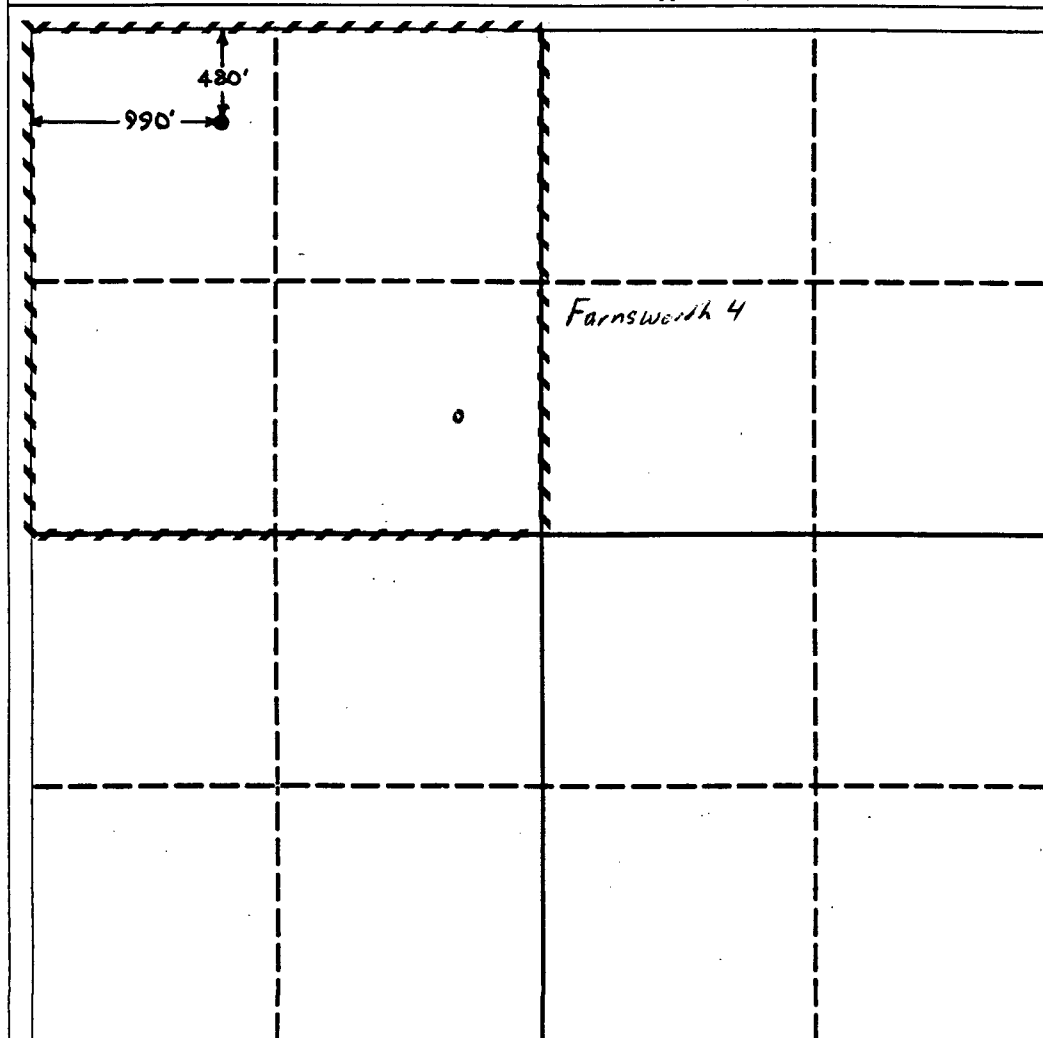
**DISTRICT III**  
1000 Rio Brazos Rd., Aztec, NM 87410

**WELL LOCATION AND ACREAGE DEDICATION PLAT**

All Distances must be from the outer boundaries of the section

Operator <b>MERIDIAN OIL INC.</b>			Lease <b>FARNSWORTH "4"</b>		Well No. <b>11</b>
Unit Letter <b>D</b>	Section <b>4</b>	Township <b>26 SOUTH</b>	Range <b>37 EAST</b>	County <b>LEA</b>	
Actual Footage Location of Well: <b>480</b> feet from the <b>north</b> line and <b>990</b> feet from the <b>west</b> line					
Ground level Elev.	Producing Formation <b>YATES</b>		Pool <b>RHODES (YATES, 7 RIVERS)</b>	Dedicated Acreage: <b>160 Acres</b>	

1. Outline the acreage dedicated to the subject well by colored pencil or hatchure marks on the plat below.
2. If more than one lease is dedicated to the well, outline each and identify the ownership thereof (both as to working interest and royalty).
3. If more than one lease of different ownership is dedicated to the well, have the interest of all owners been consolidated by communitization, unitization, force-pooling, etc.?  
☐ Yes ☐ No If answer is "yes" type of consolidation \_\_\_\_\_  
If answer is "no" list the owners and tract descriptions which have actually been consolidated. (Use reverse side of this form if necessary.)  
No allowable will be assigned to the well until all interests have been consolidated (by communitization, unitization, forced-pooling, or otherwise) or until a non-standard unit, eliminating such interest, has been approved by the Division.



**OPERATOR CERTIFICATION**

I hereby certify that the information contained herein is true and complete to the best of my knowledge and belief.

Signature

Printed Name

**Robert L. Bradshaw**

Position

**Sr. Staff Env./Reg. Spec.**

Company

**Meridian Oil Inc.**

Date

**10 August 1990**

**SURVEYOR CERTIFICATION**

I hereby certify that the well location shown on this plat was plotted from field notes of actual surveys made by me or under my supervision, and that the same is true and correct to the best of my knowledge and belief.

Date Surveyed

Signature & Seal of  
Professional Surveyor

Certificate No.

0 330 660 990 1320 1650 1980 2310 2640 2000 1500 1000 500 0

August 24, 1990

Mr., Mike Stogner  
Oil Conservation Division  
P.O. Box 2088  
Santa Fe, NM 87504-2088

Re: Unorthodox Location  
Farnsworth "4" No. 11  
Unit D, Sec. 4, T26S, R37E  
Lea County, NM

Dear Mr. Stogner:

Chevron, U.S.A., Inc. has been notified by Meridian Oil Inc. that their plans to recomplete the referenced well from the Langlie Mattix (7R, Q, GB) to the Rhodes (Yates, 7R) will result in an unorthodox location. As an off-set operator, we waive objections to the Oil Conservation Division administratively approving the unorthodox location as requested.

Sincerely,

Chevron, U.S.A., Inc.

by: Alan W. Bohling - Protraction Engineer  
date: September 17, 1990

August 24, 1990

Mr., Mike Stogner  
Oil Conservation Division  
P.O. Box 2088  
Santa Fe, NM 87504-2088

Re: Unorthodox Location  
Farnsworth "4" No. 11  
Unit D, Sec. 4, T26S, R37E  
Lea County, NM

Dear Mr. Stogner:

Chevron, U.S.A., Inc. has been notified by Meridian Oil Inc. that their plans to recomplete the referenced well from the Langlie Mattix (7R, Q, GB) to the Rhodes (Yates, 7R) will result in an unorthodox location. As an off-set operator, we waive objections to the Oil Conservation Division administratively approving the unorthodox location as requested.

Sincerely,

Chevron, U.S.A., Inc.

by:

date:

*Alan W. Bohling - Location Engineer*  
*September 17, 1990*

August 24, 1990

Mr., Mike Stogner  
Oil Conservation Division  
P.O. Box 2088  
Santa Fe, NM 87504-2088

Re: Unorthodox Location  
Farnsworth "4" No. 11  
Unit D, Sec. 4, T26S, R37E  
Lea County, NM

Dear Mr. Stogner:

Chevron, U.S.A., Inc. has been notified by Meridian Oil Inc. that their plans to recompleate the referenced well form the Langlie Mattix (7R, Q, GB) to the Rhodes (Yates, 7R) will result in an unorthodox location. As an off-set operator, we waive objections to the Oil Conservation Division administratively approving the unorthodox location as requested.

Sincerely,

Chevron, U.S.A., Inc.

by: Alan W. Bohling - Procation Engineer  
date: September 17, 1990

August 24, 1990

Mr., Mike Stogner  
Oil Conservation Division  
P.O. Box 2088  
Santa Fe, NM 87504-2088

Re: Unorthodox Location  
Farnsworth "4" No. 11  
Unit D, Sec. 4, T26S, R37E  
Lea County, NM

Dear Mr. Stogner:

Chevron, U.S.A., Inc. has been notified by Meridian Oil Inc. that their plans to recomplete the referenced well from the Langlie Mattix (7R, Q, GB) to the Rhodes (Yates, 7R) will result in an unorthodox location. As an off-set operator, we waive objections to the Oil Conservation Division administratively approving the unorthodox location as requested.

Sincerely,

Chevron, U.S.A., Inc.

by: Alan W. Bohling - Production Engineer  
date: September 17, 1990