



NSB

10/16/96

OIL CONSERVATION DIVISION  
RECEIVEDTexaco Exploration  
and Production Inc500 North Loraine  
Midland TX 79701P O Box 3109  
Midland TX 79702

AM 8 52

September 24, 1996

GOV - STATE AND LOCAL GOVERNMENTS

## Unorthodox Location

E. E. Blinebry "A" Federal Com NCT-1 Well No. 5

Jalmat Gas Pool

Lea County, New Mexico

State of New Mexico

Energy and Minerals Department

Oil Conservation Division

2040 South Pacheco

Santa Fe, New Mexico 87505

Attention: Mr. Michael E. Stogner

Gentlemen:

An Exception to Rule 104 F.(2), by administrative approval, is requested for the captioned well. This well is located 1140' FSL & 1584' FWL, Unit Letter "N", of Section 31, T-23-S, R-37-E.

This well must be drilled in this location due to topographic conditions. The "legal location" for this well was too close to Sid Richardson's powerline and two main water lines. (see attached topo map and Rig Layout). This location does not encroach on the 990'/990' setback as prescribed by the Field Rules. It is unorthodox because of the internal quarter quarter section line, therefore, the Offset Operators are "unaffected".

We believe drilling a directional well to reach a legal bottom-hole location is not feasible due to the cost involved. The associated costs of drilling a directional well severely impacts the economics.

This well will be drilled on a Non-Standard Gas Proration Unit under Order R-2474.

Yours very truly,

C. W. Howard  
Engineer Assistant

CWH:cwh Attachments cc: BLM, P. O. Box 1778, Carlsbad, NM 88220

DISTRICT I  
P. O. Box 1980, Hobbs, NM 88240

DISTRICT II  
P. O. Drawer DD, Artesia, NM 88210

DISTRICT III  
1000 Rio Brazos Rd., Aztec, NM 87410

DISTRICT IV  
P. O. Box 2088, Santa Fe, NM 87504-2088

State of New Mexico  
Energy, Minerals and Natural Resources Department

OIL CONSERVATION DIVISION

PO Box 2088  
Santa Fe, NM 87504-2088

Form C-102  
Revised February 10, 1994

Instructions on back

Submit to Appropriate District Office

State Lease-4 copies  
Fee Lease-3 copies

☐ AMENDED REPORT

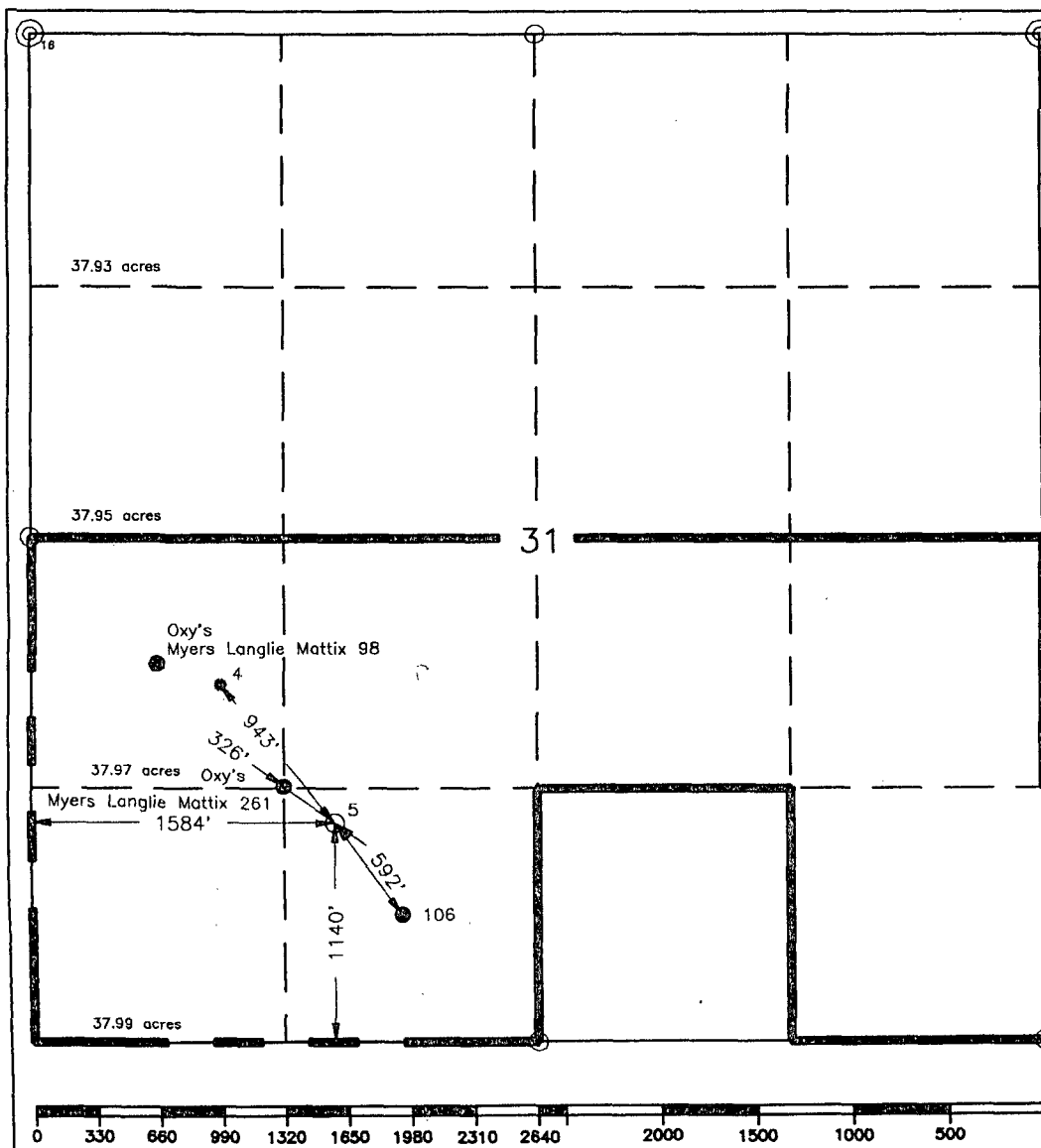
WELL LOCATION AND ACREAGE DEDICATION PLAT

1 API Number		2 Pool Code		3 Pool Name Jalmat Gas Pool	
4 Property Code 10905		5 Property Name E. E. Blinebry "A" Federal Com NCT-1			6 Well Number 5
7 GRID No. 22351		8 Operator Name TEXACO EXPLORATION & PRODUCTION, INC.			9 Elevation 3325'

10 Surface Location									
UL or lot no. N	Section 31	Township 23-S	Range 37-E	Lot Idn	Feet from the 1140'	North/South line South	Feet from the 1584'	East/West line West	7 County Leo

11 Bottom Hole Location If Different From Surface									
UL or lot no.	Section	Township	Range	Lot Idn	Feet from the	North/South line	Feet from the	East/West line	7 County
12 Dedicated Acres 355.96		13 Joint or Infill		14 Consolidation Code		15 Order No.			

NO ALLOWABLE WILL BE ASSIGNED TO THIS COMPLETION UNTIL ALL INTERESTS HAVE BEEN CONSOLIDATED  
OR A NON-STANDARD UNIT HAS BEEN APPROVED BY THE DIVISION.



16 OPERATOR CERTIFICATION

I hereby certify that the information contained herein is true and complete to the best of my knowledge and belief.

Signature

C. Wade Howard

Printed Name

C. Wade Howard

Position

Engineer's Assistant

Company

Texaco Expl. & Prod. Inc.

Date

September 19, 1996

18 SURVEYOR CERTIFICATION

I hereby certify that the well location shown on this plat was plotted from field notes of actual surveys made by me or under my supervision, and that the same is true and correct to the best of my knowledge and belief.

Date Surveyed

September 17, 1996

Signature & Seal of Professional Surveyor

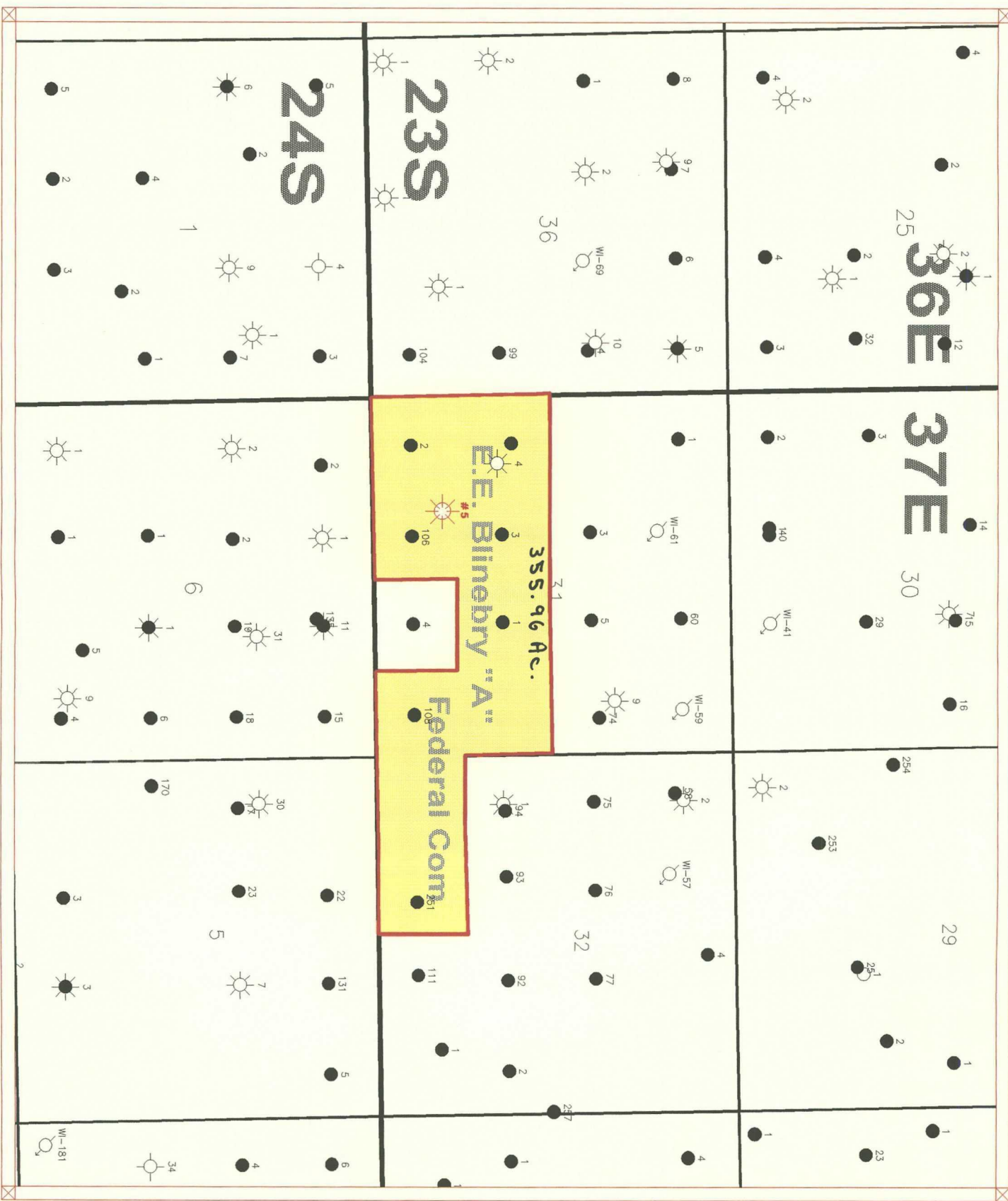
John S. Piper

Certificate No.

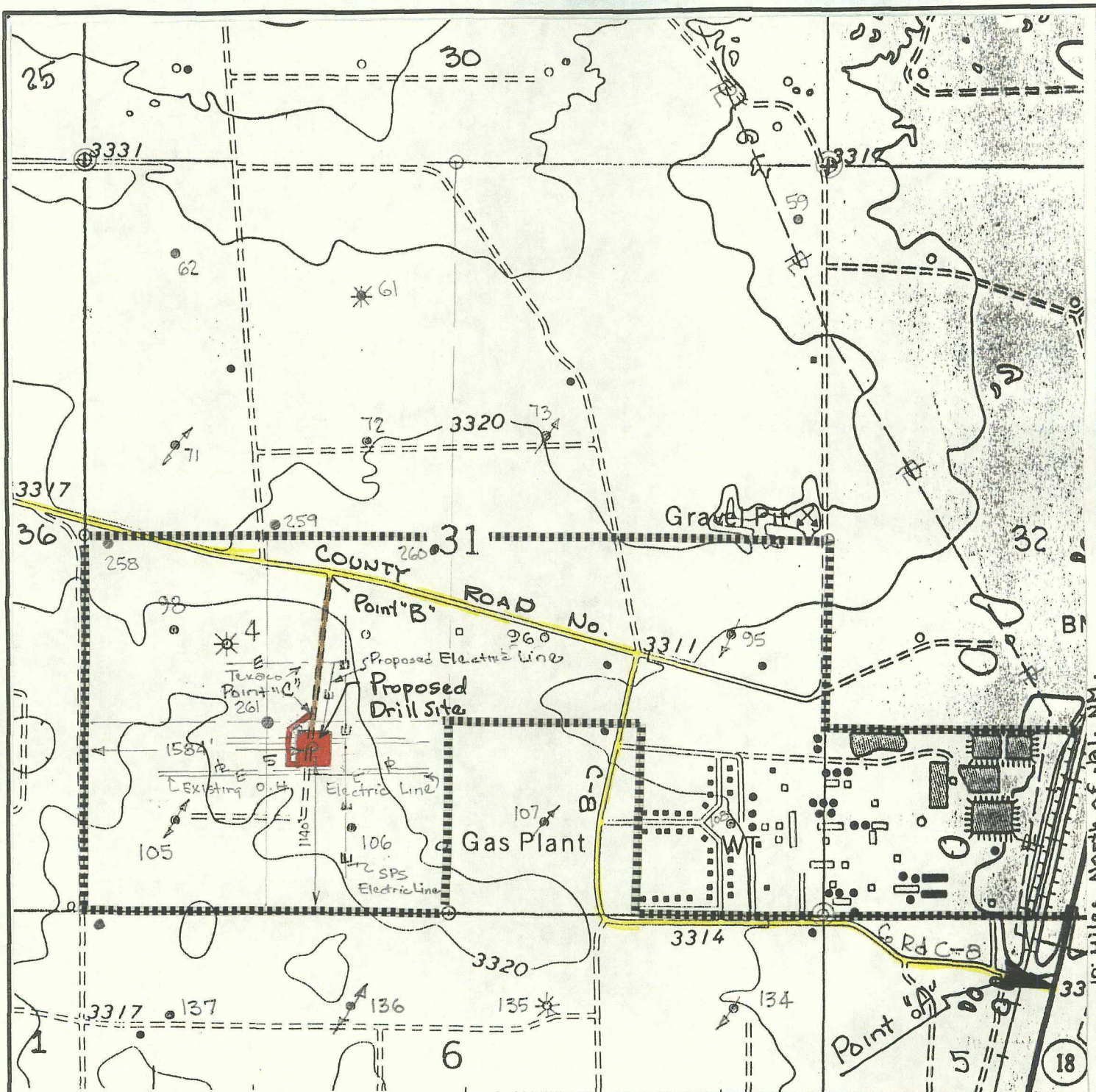
7254 John S. Piper

Sheet 8 of 8

○ = Staked Location ● = Producing Well = Injection Well ∘ = Water Supply Well \* = Plugged & Abandon Well







### LEGEND OF SYMBOLS

- = Access Road (Yellow)
- = Resource Road Federal Land (Pink)
- = Resource Road Private Land (Blue)
- = Resource Road on Lease (Brown)
- = Proposed Resource Road (Red)
- = Proposed Electric Line (Orange)
- = Proposed Production Flowline (Green)
- = Staked Well Location
- = Producing Well Location
- = Water Well
- = Found 1" Iron Pipe With Brass Cap
- ⊙ = Found 2" Iron Pipe With Brass Cap
- = Unit or Lease Boundary

### EXHIBIT "A" ACCESS ROAD AND FACILITIES MAP

### TEXACO EXPLORATION AND PRODUCTION

E. E. BLINEBRY "A" FEDERAL COM NCT-1 No. 5  
1140' FSL & 1584' FWL, Section 31,  
T-23-S, R-37-E, NMPM, Lea County, NM

Drawn by: J. S. Piper

Scale: 1" = 1000 Feet

Date: September 18, 1996

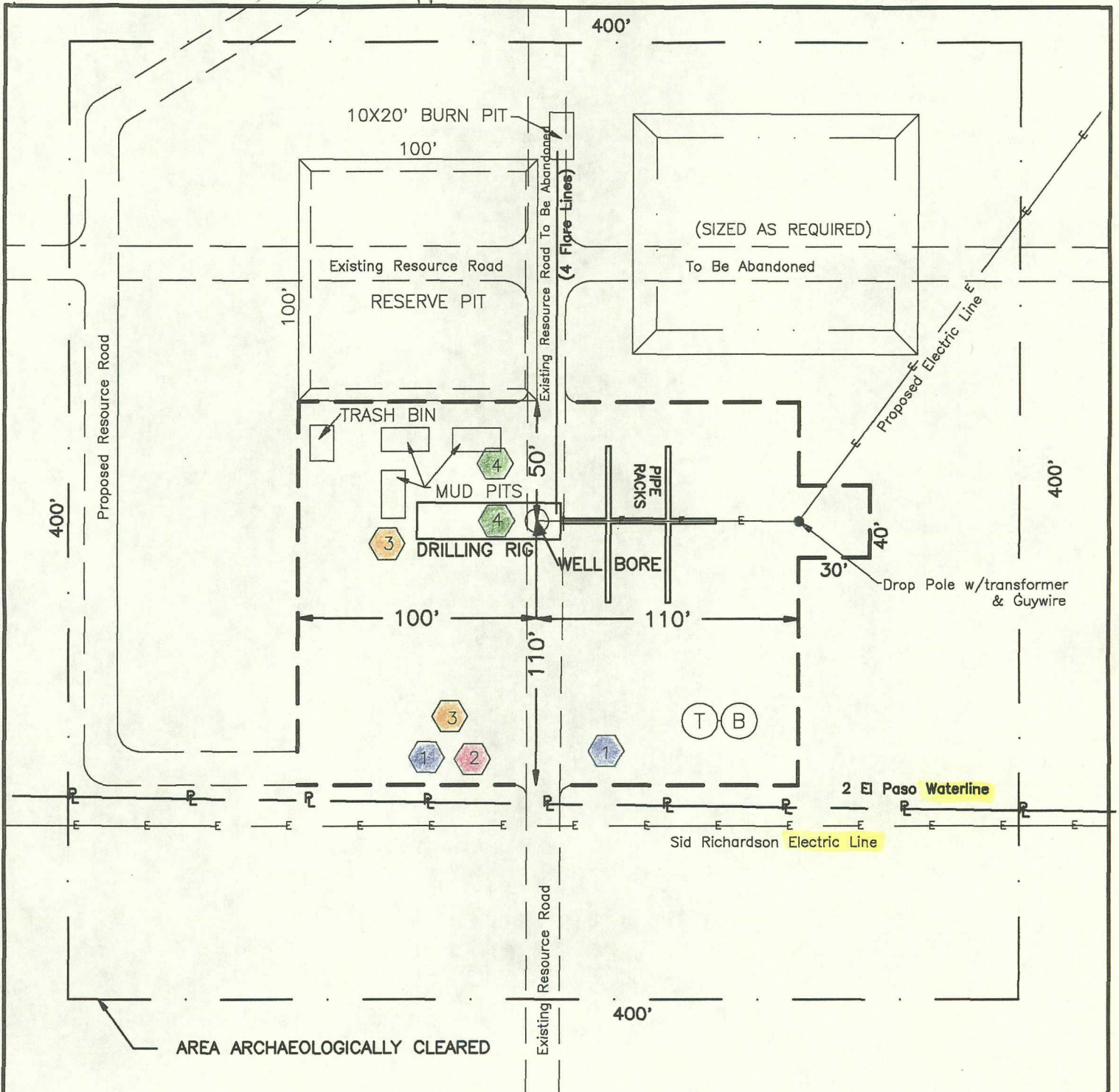
C. Wade Howard

Checked by: D. M. Ballew

Sheet: 6 of 8



Approx. 100 LF outside of Tract to Existing Road.



# H<sub>2</sub>S DRILLING OPERATION PLAN



Briefing Station



H<sub>2</sub>S Safety Trailer



Windsocks



H<sub>2</sub>S Detectors, Shale Shaker, Rotating Head, Rig Floor

Prevailing Wind from the South

## EXHIBIT "B" DRILLING RIG LAYOUT

### TEXACO EXPLORATION AND PRODUCTION INC.

E. E. Blinbry "A" Federal Com NCT-1 No. 5  
1140' FSL & 1584' FWL, Section 31  
T-23-S, R-37-E, Lea County, NM

Drawn by: D. M. Ballew

Scale: 1" = 60'

Date: September 18, 1996

C. WADE HOWARD

Checked by: J. S. Piper

Sheet 7 of 8