

# Mobil Exploration & Producing U.S. Inc.

OIL CONSERVATION DIVISION

RECEIVED

October 17, 1990

190 OCT 19 1990

P.O. BOX 633  
MIDLAND, TEXAS 79702

MIDLAND DIVISION

State of New Mexico - E&M Dept  
Attention: Mr. D. Catanach  
Oil Conservation Division  
State Land Office Building - P. O. Box 2088  
Santa Fe, New Mexico 87501

DUAL BLINEBRY/TUBB GAS WELL  
UNORTHODOX WELL LOCATION  
E. O. CARSON WELL NO. 17  
BLINEBRY & TUBB POOLS  
LEA COUNTY, NEW MEXICO

Mobil Exploration & Producing U.S. Inc. (MEPUS), as Agent for Mobil Producing Texas & New Mexico Inc., respectfully requests authority to perforate the Blinebry, and duly complete the subject well in the Blinebry & Tubb Pools at an unorthodox location.

This request is necessary, as required by the Blinebry/Tubb Gas Pool Field Rules, due to the well being less than 660 feet to any outer boundary of such tract.

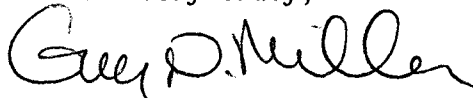
The following items are being submitted, in triplicate, in support of this request:

1. Form C-101 - Application for Permit to Drill, Deepen or Plug Back;
2. Form C-102 - Well location and acreage dedication plat;
3. Map showing Offset Operators;
4. Copy of Certified letter to Offset Operators.
5. Copy of administrative order SD-84-2 dated 5-15-84.

A copy of this letter and attachments are being furnished to the Offset Operators by Certified Mail as notice of this application.

MEPUS requests that this unorthodox location be administratively approved.

Yours very truly,



G. N. Miller  
Environmental, Regulatory &  
Loss Prevention Supervisor

Mobil Exploration & Producing U.S. Inc.  
as Agent for  
Mobil Producing Texas & New Mexico Inc.

JWD/fc  
Enclosure

cc: Oil Conservation Division - Hobbs  
Offset Operators (w/Enc.)

# Mobil Exploration & Producing U.S. Inc.

October 17, 1990

P.O. BOX 633  
MIDLAND, TEXAS 79702

MIDLAND DIVISION

State of New Mexico - E&M Dept  
Attention: Mr. D. Catanach  
Oil Conservation Division  
State Land Office Building - P. O. Box 2088  
Santa Fe, New Mexico 87501

DUAL BLINEBRY/TUBB GAS WELL  
UNORTHODOX WELL LOCATION  
E. O. CARSON WELL NO. 17  
BLINEBRY & TUBB POOLS  
LEA COUNTY, NEW MEXICO

Mobil Exploration & Producing U.S. Inc. (MEPUS), as Agent for Mobil Producing Texas & New Mexico Inc., respectfully requests authority to perforate the Blinebry, and duly complete the subject well in the Blinebry & Tubb Pools at an unorthodox location.

This request is necessary, as required by the Blinebry/Tubb Gas Pool Field Rules, due to the well being less than 660 feet to any outer boundary of such tract.

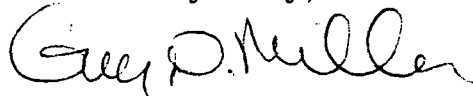
The following items are being submitted, in triplicate, in support of this request:

1. Form C-101 - Application for Permit to Drill, Deepen or Plug Back;
2. Form C-102 - Well location and acreage dedication plat;
3. Map showing Offset Operators;
4. Copy of Certified letter to Offset Operators.
5. Copy of administrative order SD-84-2 dated 5-15-84.

A copy of this letter and attachments are being furnished to the Offset Operators by Certified Mail as notice of this application.

MEPUS requests that this unorthodox location be administratively approved.

Yours very truly,



G. N. Miller  
Environmental, Regulatory &  
Loss Prevention Supervisor

bcc: D. Elwood - Prod Engr  
D. Werley - Prod Foreman - Buckeye  
Central Files  
Regulatory Files

Mobil Exploration & Producing U.S. Inc.  
as Agent for  
Mobil Producing Texas & New Mexico Inc.

JWD/fc  
Enclosure

cc: Oil Conservation Division - Hobbs  
Offset Operators (w/Enc.)

Submit to Appropriate  
District Office  
State Lease - 6 copies  
Fee Lease - 5 copies

State of New Mexico  
Energy, Minerals and Natural Resources Department

Form C-101  
Revised 1-1-89

OIL CONSERVATION DIVISION

DISTRICT I  
P.O. Box 1980, Hobbs, NM 88240

P.O. Box 2088

Santa Fe, New Mexico 87504-2088

DISTRICT II  
P.O. Drawer DD, Artesia, NM 88210

DISTRICT III  
1000 Rio Brazos Rd., Aztec, NM 87410

API NO. (assigned by OCD on New Wells)

30-025-06871

5. Indicate Type of Lease

STATE ☐

FEE ☒

6. State Oil & Gas Lease No.

APPLICATION FOR PERMIT TO DRILL, DEEPEN, OR PLUG BACK

1a. Type of Work:

DRILL ☐

RE-ENTER ☐

DEEPEN ☐

PLUG BACK ☒

b. Type of Well:

OIL  
WELL ☐

GAS  
WELL ☒

OTHER

SINGLE  
ZONE ☐

MULTIPLE  
ZONE ☒

7. Lease Name or Unit Agreement Name

E. O. Carson

2. Name of Operator

Mobil Producing TX. & N.M. Inc., Thru its Agent Mobil Expl. & Prod. U.S. Inc.

8. Well No.

17

3. Address of Operator

P.O. Box 633 Midland, Texas 79702

9. Pool name or Wildcat

Blinebry & Tubb Gas

4. Well Location

Unit Letter N : 518.6 Feet From The South Line and 2121.4 Feet From The West Line

Section 28

Township

21S

Range 37E

NMPM

Lea

County

10. Proposed Depth

8143

11. Formation

Blinebry & Tubb

12. Rotary or C.T.

Rotary

13. Elevations (Show whether DF, RT, GR, etc.)

3451- Ground

14. Kind & Status Plug. Bond

On File

15. Drilling Contractor

Unknown

16. Approx. Date Work will start

ASAP

17.

PROPOSED CASING AND CEMENT PROGRAM

SIZE OF HOLE	SIZE OF CASING	WEIGHT PER FOOT	SETTING DEPTH	SACKS OF CEMENT	EST. TOP
17-1/4	13-3/8"	48#	338'	300	Circulated
11"	8-5/8"	32#	2900'	1500	Circulated
7-7/8"	5-1/2"	17#	8143'	950	2325'

This well is presently producing out of Tubb Gas Pool. Permission is requested to plug back and complete as a dual gas well in the Blinebry & Tubb Pools.

1. MIRU WO Unit. NU BOP, Test
2. RIH w/RBP + tbg, set RBP @  $\pm 5850'$ , cap w/10' sd.
3. MIRU wireline ut. Prepare to perf Blinebry from 5450-5716 (total 72 holes, 36') RD wireline unit.
4. MIRU service co. Prepare to break down Blinebry perfs w/4000 gals 15% DI NEFE HCL + 100 1.1 sp gr RCBS
5. Rel pkr, run down over perfs, knock off RCBS. Reset pkr @  $\pm 5350'$ .
6. MIRU D-S and prepare to SWF Blinebry.
7. Rel pkr, POOH w/pkr + workstring.
8. RIH w/bailer + workstring, CO csg to  $\pm 5800'$ .
9. RIH w/on/off tool + 189 jts 2-3/8" prod tbg.
10. Flow test Blinebry down sales line, obtain stabilized rate/ tbg press.
11. Swab tbg fluid level to  $\pm 5850'$ . Open DHSOV w/1 clockwise rotation, flow test Tubb.
12. Put dual Blinebry/Tubb on production.

Blowout Preventer Program attached:

IN ABOVE SPACE DESCRIBE PROPOSED PROGRAM: IF PROPOSAL IS TO DEEPEN OR PLUG BACK, GIVE DATA ON PRESENT PRODUCTIVE ZONE AND PROPOSED NEW PRODUCTIVE ZONE. GIVE BLOWOUT PREVENTER PROGRAM, IF ANY.

I hereby certify that the information above is true and complete to the best of my knowledge and belief.

SIGNATURE

TITLE Regulatory Technician

DATE 10/12/90

(915)

TYPE OR PRINT NAME

Judy Dixon

TELEPHONE NO. 688-2452

(This space for State Use)

APPROVED BY

TITLE

DATE

CONDITIONS OF APPROVAL, IF ANY:

Submit to Appropriate  
District Office  
State Lease - 4 copies  
Fee Lease - 3 copies

State of New Mexico  
Energy, Minerals and Natural Resources Department

Form C-102  
Revised 1-1-89

OIL CONSERVATION DIVISION

P.O. Box 2088  
Santa Fe, New Mexico 87504-2088

DISTRICT I  
P.O. Box 1980, Hobbs, NM 88240

DISTRICT II  
P.O. Drawer DD, Artesia, NM 88210

DISTRICT III  
1000 Rio Brazos Rd., Aztec, NM 87410

WELL LOCATION AND ACREAGE DEDICATION PLAT

All Distances must be from the outer boundaries of the section

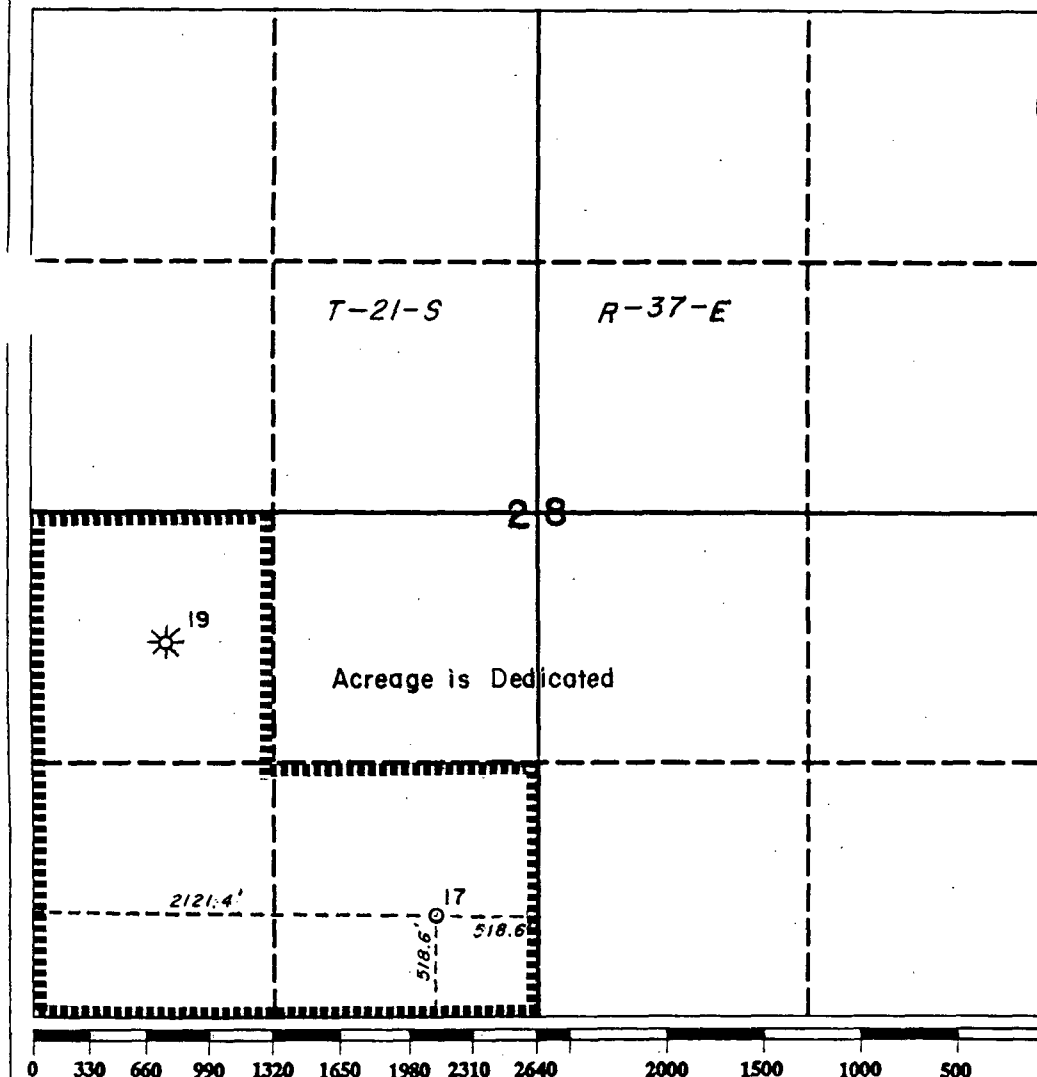
Operator Mobil Producing Tx. & N. M. Inc.			Lease E. O. Carson		Well No. 17
Unit Letter N	Section 28	Township 21S	Range 37E	County NMPM Lea	

Actual Footage Location of Well:

518.6 feet from the South line and 2121.4 feet from the West line

Ground level Elev. 3451	Producing Formation Blinebry & Tubb	Pool Blinebry & Tubb Gas	Dedicated Acreage: 120 Acres
----------------------------	--	-----------------------------	---------------------------------

1. Outline the acreage dedicated to the subject well by colored pencil or hatchure marks on the plat below.
2. If more than one lease is dedicated to the well, outline each and identify the ownership thereof (both as to working interest and royalty).
3. If more than one lease of different ownership is dedicated to the well, have the interest of all owners been consolidated by communitization, unitization, force-pooling, etc.?  
☐ Yes ☐ No If answer is "yes" type of consolidation \_\_\_\_\_  
If answer is "no" list the owners and tract descriptions which have actually been consolidated. (Use reverse side of this form if necessary.) \_\_\_\_\_  
No allowable will be assigned to the well until all interests have been consolidated (by communitization, unitization, forced-pooling, or otherwise) or until a non-standard unit, eliminating such interest, has been approved by the Division.



OPERATOR CERTIFICATION

I hereby certify that the information contained herein is true and complete to the best of my knowledge and belief.

Signature  
Judy Dixon

Printed Name  
Judy Dixon  
Position  
Environmental & Regulatory

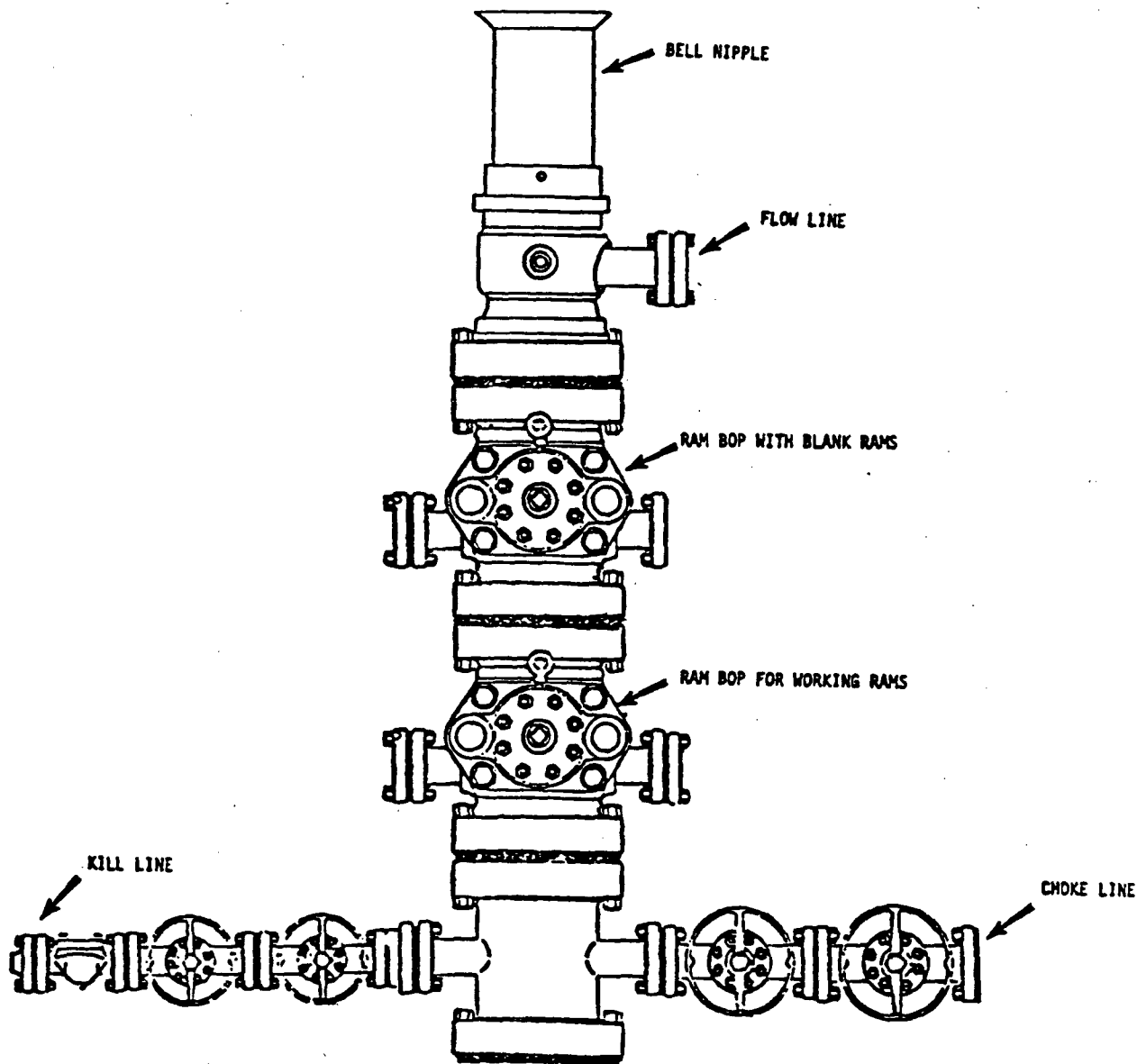
Company  
Mobil Producing Texas & New Mexico Inc.  
acting by and through its agent  
Mobil Exploration & Producing U.S. Inc.  
Date

SURVEYOR CERTIFICATION

I hereby certify that the well location shown on this plat was plotted from field notes of actual surveys made by me or under my supervision, and that the same is true and correct to the best of my knowledge and belief.

Date Surveyed  
Signature & Seal of Professional Surveyor

Certificate No.



BOP rams will be actuated on each trip of drill pipe and will be tested before drilling the plug on each casing string.

NOTE: ALL VALVES ARE METAL-TO-METAL SEAL AND FLANGED. ALL COMPONENTS MUST MEET ABOVE MINIMUM PRESSURE RATINGS. ALL COMPONENTS TO BE TESTED TO RATED PRESSURE AFTER ASSEMBLY AND BEFORE FURTHER CONDUIT OPERATIONS MAY BE CONDUCTED.

Mobil Producing  
Texas & New Mexico Inc.  
Houston, Texas

MOBIL NO. 17 E. O. Carson

(LEASE)

Lea COUNTY, New Mexico STATE

BLOWOUT PREVENTER ASSEMBLY

(6 in. 3000 PSI WP)

Seals

Date  
Drawn  
Checked  
Approved  
Revised

DATE 10-5-90 WELL NO. 17 LEASE E O Carson

FIELD Tubb LOCATION Unit N Sec 28 T21S R37E

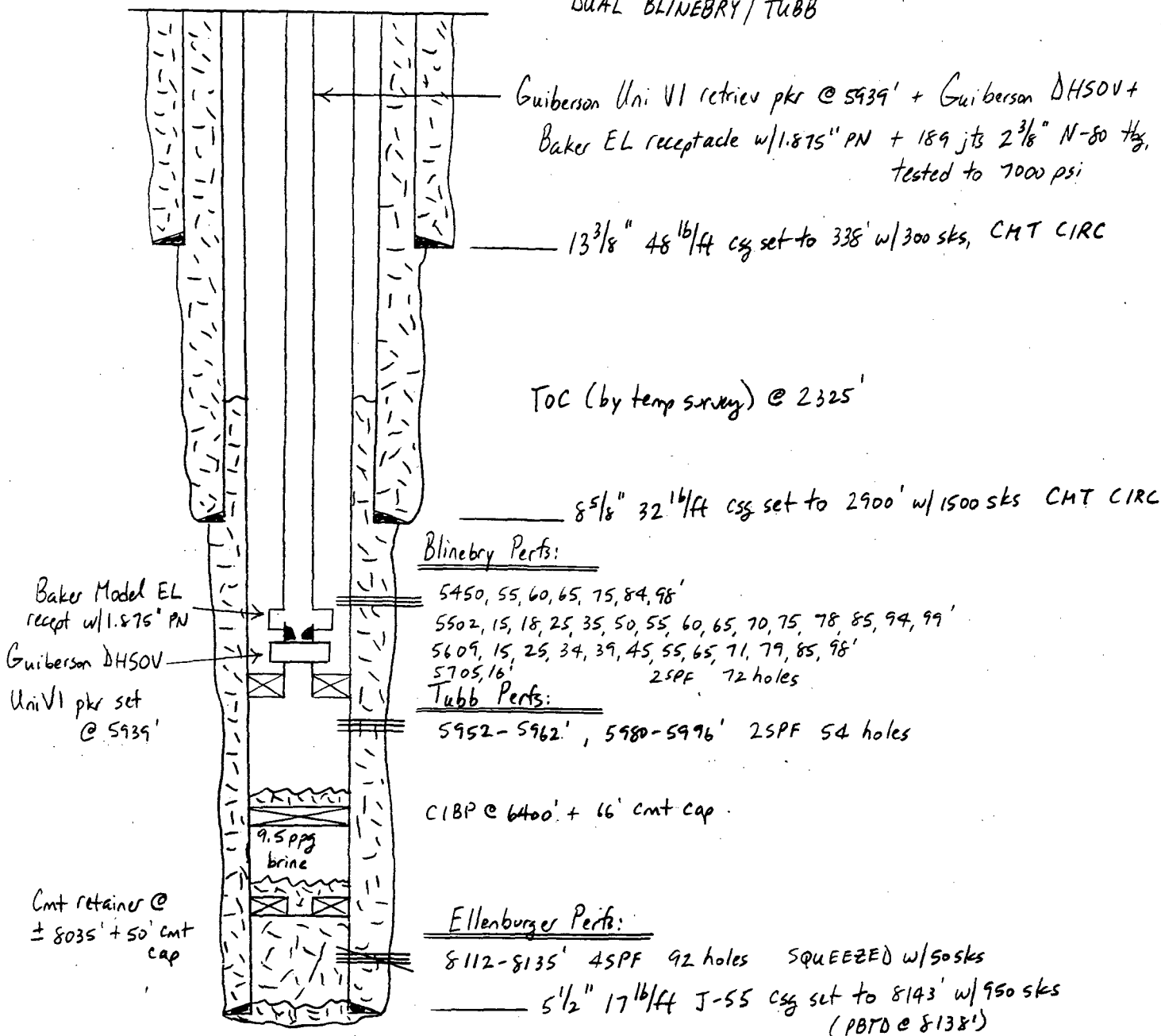
519' FSL & 2121' FWL Lea County, NM

SIGNED D G Elwood

GL 3451.5'  
DF 3461'  
KB 3462.5'  
ZERO KB (11' AGL)

PROPOSED WELLBORE DIAGRAM

DUAL BLINEBRY/TUBB



TD: 8143'  
PBD: 6334'



STATE OF NEW MEXICO  
**ENERGY AND MINERALS DEPARTMENT**  
OIL CONSERVATION DIVISION

TONY ANAYA  
GOVERNOR

POST OFFICE BOX 2088  
STATE LAND OFFICE BUILDING  
SANTA FE, NEW MEXICO 87501  
(505) 827-5800

May 15, 1984

Mobil Producing Texas & New Mexico Inc.  
Nine Greenway Plaza - Suite 2700  
Houston, Texas 77046

Attention: J. A. Morris, Regulatory  
Engineering Supervisor

Administrative Order SD-84-2

Gentlemen:

You are hereby authorized to simultaneously dedicate a 120-acre non-standard proration unit comprising the W/2 SW/4 & SE/4 SW/4 of Section 28, Township 21 South, Range 37 East, NMPM, Lea County, to your E. O. Carson Lease Well No. 17 located at a point 518.6 feet from the south line and 2121.4 feet from the west line of Section 28 and your E. O. Carson Lease Well No. 19 located at 1980 feet from the south line and 760 feet from the west line of Section 28, both in Township 21 South, Range 37 East, NMPM, Blinebry and Tubb Gas Pools, Lea County, New Mexico.

Further, you are hereby permitted to produce the Blinebry and Tubb Gas Pools allowables from any of the wells on the proration unit in any proportion.

Done at Santa Fe, New Mexico, on this 8th day of March, 1984.

  
Joe D. Ramey  
Director

cc: OCD District Office - Hobbs  
Oil & Gas Engineering Committee - Hobbs