

MERRION OIL & GAS CORPORATION

610 REILLY AVE. • P. O. Box 840
FARMINGTON, NEW MEXICO 87499

CERTIFIED MAIL

Received
12/27/90

December 20, 1990

Mr. William LeMay
New Mexico Oil Conservation Division
P. O. Box 2088
Santa Fe, New Mexico 87503

RE: Snake Eyes No. 2
1980' FSL & 1980' FWL
Section 20, T21N, R8W
San Juan County, New Mexico

Dear Mr. LeMay:

This is a request for administrative approval for a non-standard gas well location in the Basin Dakota Pool.

Merrion Oil & Gas will re-enter and complete the Snake Eyes No. 2 well to the Snake Eyes Dakota Pool. The current location of this well is 1980' FSL & 1980' FWL, Section 20, T21N, R8W, San Juan County, New Mexico. The well is considered non-standard due to the footage requirements established for the Snake Eyes Dakota Pool. To comply with the New Mexico Oil Conservation Division rules, Merrion is submitting the following for your approval of this non-standard location:

1. C-102 plat showing location of the well;
2. Plat showing offset owners/operators;
3. Affidavit of notification of offset owners/operators;
4. Copy of Well Re-completion Log for original completion.

A copy of this application is being submitted to all offset owners/operators by certified mail with a request that they furnish your Santa Fe office with a Waiver of Objection, and return one copy to this office.

Sincerely yours,



George F. Sharpe
Reservoir Engineer

GFS/eg

Enclosures
CC: Well File

New Mexico Oil Conservation Division
Page Two
December 20, 1990

WAIVER

_____ hereby waives objection to
Merrion Oil & Gas Corporation's application for a non-standard
location for their Snake Eyes No. 2 as proposed above.

By: _____ Date: _____

CC: Bureau of Land Management-Farmington, NM
NMOCD-Aztec, NM
Well File

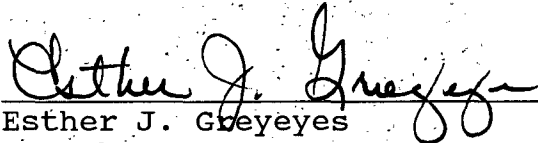
SNAKE EYES NO. 2
1980' FSL & 1980' FWL
Section 20, T21N, R8W
San Juan County, New Mexico

I hereby certify that the following offset owners/operators have been notified by certified mail of our application for administrative approval for non-standard gas well location to re-enter and complete the above well.

Bureau of Land Management
1235 La Plata Highway
Farmington, New Mexico 87499

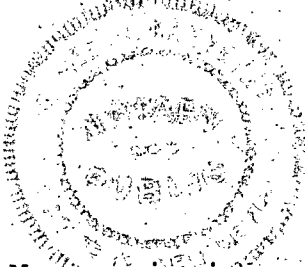
New Mexico Oil Conservation Division
1000 Rio Brazos Road
Aztec, New Mexico 87410

San Juan County
State of New Mexico



Esther J. Greyeyes

December 20, 1990



My commission expires:
August 7, 1994

MERRION OIL & GAS CORPORATION

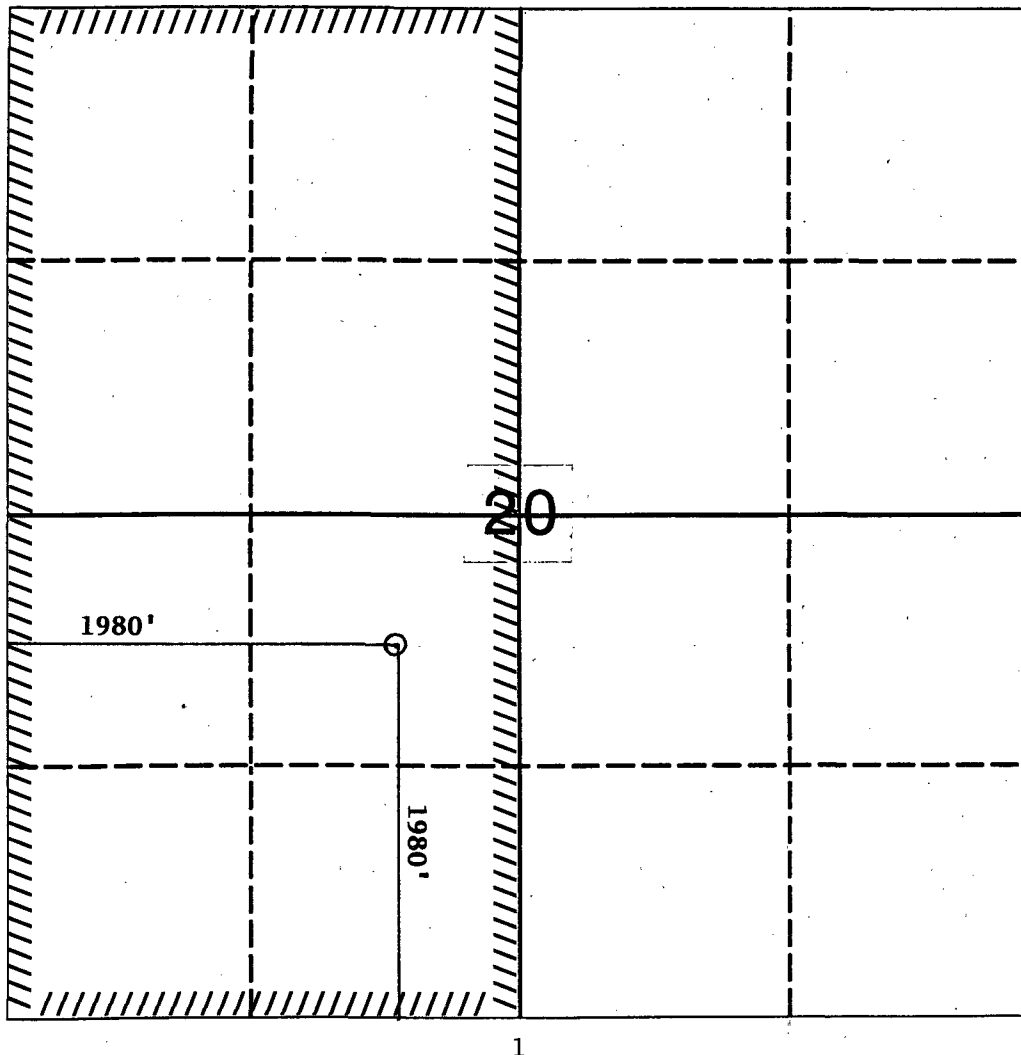
SNAKE EYES NO. 2
1980' FSL & 1980' FWL
Section 20, T21N, R8W
San Juan County, New Mexico

APPLICATION FOR NON-STANDARD PRORATION UNIT

2

2

3



- Remarks: 1) Merrion Oil & Gas Corp., PO Box 840, Farmington, NM 87499
2) BLM, 1235 LaPlata Highway, Farmington, NM 87401
3) NMOCD, 1000 Rio Brazos Road, Aztec, NM 87410

Submit to Appropriate
District Office
State Lease - 4 copies
Fee Lease - 3 copies

State of New Mexico
Energy, Minerals and Natural Resources Department

Form C-102
Revised 1-1-89

OIL CONSERVATION DIVISION

P.O. Box 2088

Santa Fe, New Mexico 87504-2088

DISTRICT I

P.O. Box 1980, Hobbs, NM 88240

DISTRICT II

P.O. Drawer DD, Artesia, NM 88210

DISTRICT III

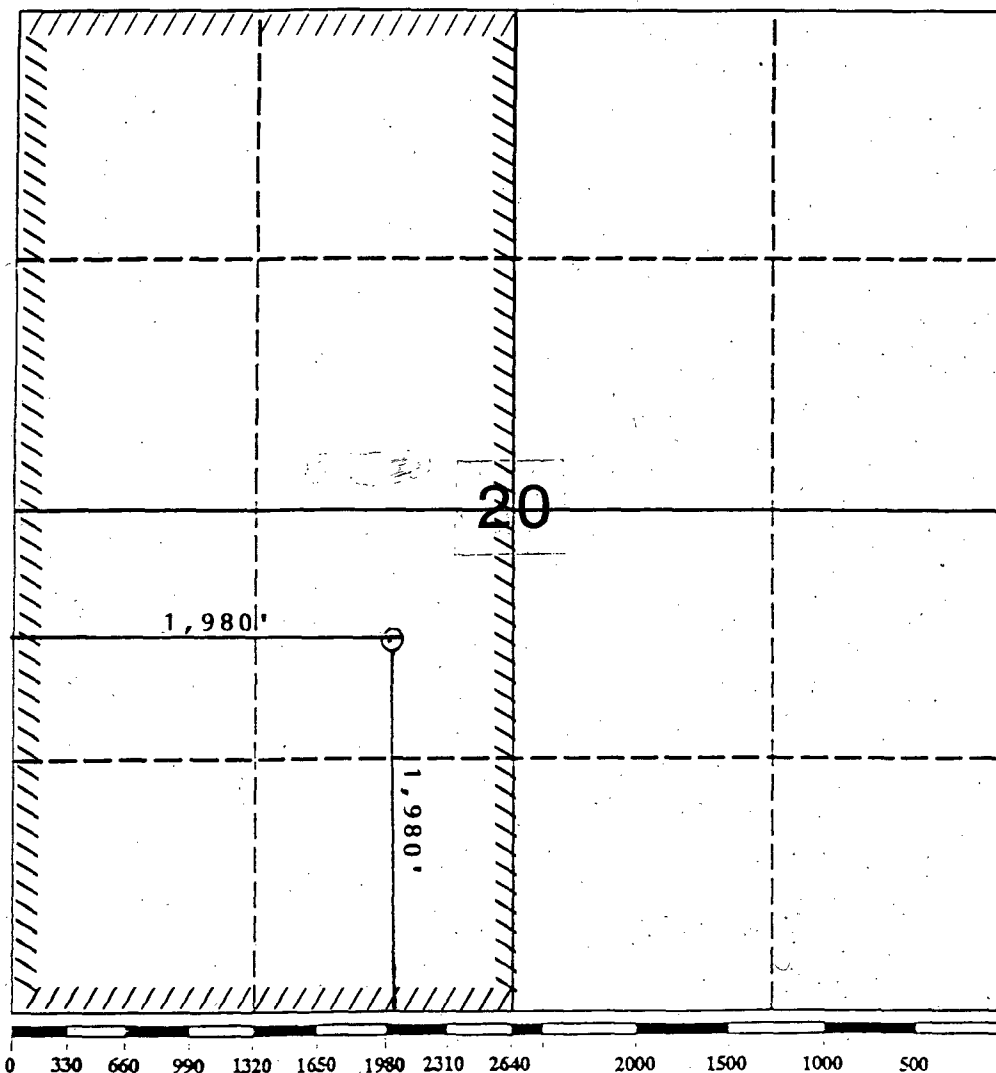
1000 Rio Brazos Rd., Aztec, NM 87410

WELL LOCATION AND ACREAGE DEDICATION PLAT

All Distances must be from the outer boundaries of the section

Operator Merrion Oil & Gas Corporation			Lease Snake Eyes		Well No. 2
Unit Letter K	Section 20	Township 21N	Range 8W	County San Juan	
Actual Footage Location of Well: 1980' feet from the South line and 1980' feet from the West line					
Ground level Elev. 6,560'	Producing Formation Dakota		Pool Snake Eyes Dakota		Dedicated Acreage: 320 Acres

1. Outline the acreage dedicated to the subject well by colored pencil or hatchure marks on the plat below.
2. If more than one lease is dedicated to the well, outline each and identify the ownership thereof (both as to working interest and royalty).
3. If more than one lease of different ownership is dedicated to the well, have the interest of all owners been consolidated by communitization, unitization, force-pooling, etc.?
☐ Yes ☐ No If answer is "yes" type of consolidation _____
If answer is "no" list the owners and tract descriptions which have actually been consolidated. (Use reverse side of this form if necessary.) _____
No allowable will be assigned to the well until all interests have been consolidated (by communitization, unitization, forced-pooling, or otherwise) or until a non-standard unit, eliminating such interest, has been approved by the Division.



OPERATOR CERTIFICATION

I hereby certify that the information contained herein is true and complete to the best of my knowledge and belief.

Signature

George F. Sharpe

Printed Name

George F. Sharpe

Position

Engineer

Company

Merrion Oil & Gas

Date

10-26-90

SURVEYOR CERTIFICATION

I hereby certify that the well location shown on this plat was plotted from field notes of actual surveys made by me or under my supervision, and that the same is true and correct to the best of my knowledge and belief.

Date Surveyed

Signature & Seal of
Professional Surveyor

Certificate No.

Standard 640 acre Section

cc: 3 OCD, Aztec
1 Well File

Q - MCT
AUG 14 1943
OIL CON. COM.
DIST.

INSTRUCTIONS

This form is to be filed with the appropriate District Office of the Commission not later than 90 days after the completion of drilling operations. The log shall be accompanied by a copy of all electrical and radio-activity logs run on the well and a summary of all vertical logs run down the well. It shall be accompanied by a copy of all geologic logs run on the well and a summary of all geologic logs run on the well. The log shall also be accompanied by a copy of all logs run on the well and a summary of all logs run on the well. The log shall also be accompanied by a copy of all logs run on the well and a summary of all logs run on the well. The log shall also be accompanied by a copy of all logs run on the well and a summary of all logs run on the well.

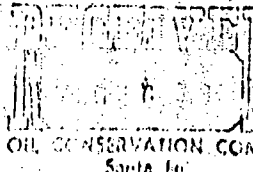
INDUATE FORMATION TOPS IN CONFORMANCE WITH GEOGRAPHICAL SECTION OF STATE

Southeastern New Mexico

Northeastern New Mexico

T. Anby	T. Canyon	T. Oak Bluffs	T. Penn "B"
T. Ruff	T. Strawn	T. Kirtland-Frontland	T. Penn "C"
T. Salt	T. Atoka	T. Pictured Cliffs	T. Penn "D"
T. Yates	T. Moss	T. Cliff House	T. Leadville
T. ? Rivers	T. Devonian	T. Menefee	T. Madison
T. Queen	T. Silurian	T. Point Lookout	T. Elbert
T. Grayburg	T. Montoya	T. Mancos	T. McFadden
T. San Andres	T. Simpson	T. Gallup	T. Ignacio Orte
T. Glorieta	T. McKee	T. House Greenhorn	T. Grants
T. Paddock	T. Ellenburger	T. Dakota	T. ...
T. Humbery	T. Co. Wash	T. Morrison	T. ...
T. Tubb	T. Granite	T. Todile	T. ...
T. Drinkard	T. Delaware Sand	T. Entrance	T. ...
T. Abn	T. House Springs	T. Wingate	T. ...
T. Wolfcamp	T. ...	T. Chino	T. ...
T. Penn	T. ...	T. Permian	T. ...
T. Chaco (through C)	T. ...	T. Penn "A"	T. ...

FORMATION RECORD (Attach additional sheets if necessary)

From	To	Thickness in Feet	Formation	From	To	Thickness in Feet	Formation
See form C-103 for additional drill stem logs after deepening below 4630.							

NO. OF COPIES DESTROYED	3
DISTRIBUTION	
SANTA FE	1
FILE	1
U.S.O.S.	2
LAND OFFICE	
OPERATOR	1

NEW MEXICO OIL CONSERVATION COMMISSION WELL COMPLETION OR RECOMPLETION REPORT AND LOG

RECEIVED
JAN 10 1977

1. TYPE OF WELL

2. TYPE OF COMPLETION

3. NAME OF OPERATOR

Tenneco Oil Company

4. ADDRESS OF OPERATOR

Suite 1200, Lincoln Tower Building, Denver, Colorado 80203

5. LOCATION OF WELL

6. COUNTY

7. TOWNSHIP

8. RANGE

9. SECTION

10. SURFACE ELEVATION

11. DEPTH OF WELL

12. DEPTH OF CEMENT

13. DEPTH OF SCREEN

14. DEPTH OF PACKER

15. DEPTH OF ISOLATION

16. DEPTH OF CEMENT

17. DEPTH OF SCREEN

18. DEPTH OF PACKER

19. DEPTH OF ISOLATION

20. DEPTH OF CEMENT

21. DEPTH OF SCREEN

22. DEPTH OF PACKER

23. DEPTH OF ISOLATION

24. DEPTH OF CEMENT

25. DEPTH OF SCREEN

26. DEPTH OF PACKER

27. DEPTH OF ISOLATION

28. DEPTH OF CEMENT

29. DEPTH OF SCREEN

30. DEPTH OF PACKER

31. DEPTH OF ISOLATION

32. DEPTH OF CEMENT

33. DEPTH OF SCREEN

34. DEPTH OF PACKER

35. DEPTH OF ISOLATION

36. DEPTH OF CEMENT

37. DEPTH OF SCREEN

38. DEPTH OF PACKER

39. DEPTH OF ISOLATION

40. DEPTH OF CEMENT

41. DEPTH OF SCREEN

42. DEPTH OF PACKER

43. DEPTH OF ISOLATION

44. DEPTH OF CEMENT

45. DEPTH OF SCREEN

46. DEPTH OF PACKER

47. DEPTH OF ISOLATION

48. DEPTH OF CEMENT

49. DEPTH OF SCREEN

50. DEPTH OF PACKER

51. DEPTH OF ISOLATION

52. DEPTH OF CEMENT

53. DEPTH OF SCREEN

54. DEPTH OF PACKER

55. DEPTH OF ISOLATION

56. DEPTH OF CEMENT

57. DEPTH OF SCREEN

58. DEPTH OF PACKER

59. DEPTH OF ISOLATION

60. DEPTH OF CEMENT

61. DEPTH OF SCREEN

62. DEPTH OF PACKER

63. DEPTH OF ISOLATION

64. DEPTH OF CEMENT

65. DEPTH OF SCREEN

66. DEPTH OF PACKER

67. DEPTH OF ISOLATION

68. DEPTH OF CEMENT

69. DEPTH OF SCREEN

70. DEPTH OF PACKER

71. DEPTH OF ISOLATION

72. DEPTH OF CEMENT

73. DEPTH OF SCREEN

74. DEPTH OF PACKER

75. DEPTH OF ISOLATION

76. DEPTH OF CEMENT

77. DEPTH OF SCREEN

78. DEPTH OF PACKER

79. DEPTH OF ISOLATION

80. DEPTH OF CEMENT

81. DEPTH OF SCREEN

82. DEPTH OF PACKER

83. DEPTH OF ISOLATION

84. DEPTH OF CEMENT

85. DEPTH OF SCREEN

86. DEPTH OF PACKER

87. DEPTH OF ISOLATION

88. DEPTH OF CEMENT

89. DEPTH OF SCREEN

90. DEPTH OF PACKER

91. DEPTH OF ISOLATION

92. DEPTH OF CEMENT

93. DEPTH OF SCREEN

94. DEPTH OF PACKER

95. DEPTH OF ISOLATION

96. DEPTH OF CEMENT

97. DEPTH OF SCREEN

98. DEPTH OF PACKER

99. DEPTH OF ISOLATION

100. DEPTH OF CEMENT

101. DEPTH OF SCREEN

102. DEPTH OF PACKER

103. DEPTH OF ISOLATION

104. DEPTH OF CEMENT

105. DEPTH OF SCREEN

106. DEPTH OF PACKER

107. DEPTH OF ISOLATION

108. DEPTH OF CEMENT

109. DEPTH OF SCREEN

110. DEPTH OF PACKER

111. DEPTH OF ISOLATION

112. DEPTH OF CEMENT

113. DEPTH OF SCREEN

114. DEPTH OF PACKER

115. DEPTH OF ISOLATION

116. DEPTH OF CEMENT

117. DEPTH OF SCREEN

118. DEPTH OF PACKER

119. DEPTH OF ISOLATION

120. DEPTH OF CEMENT

121. DEPTH OF SCREEN

122. DEPTH OF PACKER

123. DEPTH OF ISOLATION

124. DEPTH OF CEMENT

125. DEPTH OF SCREEN

126. DEPTH OF PACKER

127. DEPTH OF ISOLATION

128. DEPTH OF CEMENT

129. DEPTH OF SCREEN

130. DEPTH OF PACKER

131. DEPTH OF ISOLATION

132. DEPTH OF CEMENT

133. DEPTH OF SCREEN

134. DEPTH OF PACKER

135. DEPTH OF ISOLATION

136. DEPTH OF CEMENT

137. DEPTH OF SCREEN

138. DEPTH OF PACKER

139. DEPTH OF ISOLATION

140. DEPTH OF CEMENT

141. DEPTH OF SCREEN

142. DEPTH OF PACKER

143. DEPTH OF ISOLATION

144. DEPTH OF CEMENT

145. DEPTH OF SCREEN

146. DEPTH OF PACKER

147. DEPTH OF ISOLATION

148. DEPTH OF CEMENT

149. DEPTH OF SCREEN

150. DEPTH OF PACKER

151. DEPTH OF ISOLATION

152. DEPTH OF CEMENT

153. DEPTH OF SCREEN

154. DEPTH OF PACKER

155. DEPTH OF ISOLATION

156. DEPTH OF CEMENT

157. DEPTH OF SCREEN

158. DEPTH OF PACKER

159. DEPTH OF ISOLATION

160. DEPTH OF CEMENT

161. DEPTH OF SCREEN

162. DEPTH OF PACKER

163. DEPTH OF ISOLATION

164. DEPTH OF CEMENT

165. DEPTH OF SCREEN

166. DEPTH OF PACKER

167. DEPTH OF ISOLATION

168. DEPTH OF CEMENT

169. DEPTH OF SCREEN

170. DEPTH OF PACKER

171. DEPTH OF ISOLATION

172. DEPTH OF CEMENT

173. DEPTH OF SCREEN

174. DEPTH OF PACKER

175. DEPTH OF ISOLATION

176. DEPTH OF CEMENT

177. DEPTH OF SCREEN

178. DEPTH OF PACKER

179. DEPTH OF ISOLATION

180. DEPTH OF CEMENT

181. DEPTH OF SCREEN

182. DEPTH OF PACKER

183. DEPTH OF ISOLATION

184. DEPTH OF CEMENT

185. DEPTH OF SCREEN

186. DEPTH OF PACKER

187. DEPTH OF ISOLATION

188. DEPTH OF CEMENT

189. DEPTH OF SCREEN

190. DEPTH OF PACKER

191. DEPTH OF ISOLATION

192. DEPTH OF CEMENT

193. DEPTH OF SCREEN

194. DEPTH OF PACKER

195. DEPTH OF ISOLATION

196. DEPTH OF CEMENT

197. DEPTH OF SCREEN

198. DEPTH OF PACKER

199. DEPTH OF ISOLATION

200. DEPTH OF CEMENT

201. DEPTH OF SCREEN

202. DEPTH OF PACKER

203. DEPTH OF ISOLATION

204. DEPTH OF CEMENT

205. DEPTH OF SCREEN

206. DEPTH OF PACKER

207. DEPTH OF ISOLATION

208. DEPTH OF CEMENT

209. DEPTH OF SCREEN

210. DEPTH OF PACKER

211. DEPTH OF ISOLATION

212. DEPTH OF CEMENT

213. DEPTH OF SCREEN

214. DEPTH OF PACKER

215. DEPTH OF ISOLATION

216. DEPTH OF CEMENT

217. DEPTH OF SCREEN

218. DEPTH OF PACKER

219. DEPTH OF ISOLATION

220. DEPTH OF CEMENT

221. DEPTH OF SCREEN

222. DEPTH OF PACKER

223. DEPTH OF ISOLATION

224. DEPTH OF CEMENT

225. DEPTH OF SCREEN

226. DEPTH OF PACKER

227. DEPTH OF ISOLATION

228. DEPTH OF CEMENT

229. DEPTH OF SCREEN

230. DEPTH OF PACKER

231. DEPTH OF ISOLATION

232. DEPTH OF CEMENT

233. DEPTH OF SCREEN

234. DEPTH OF PACKER

235. DEPTH OF ISOLATION

236. DEPTH OF CEMENT

237. DEPTH OF SCREEN

238. DEPTH OF PACKER

239. DEPTH OF ISOLATION

240. DEPTH OF CEMENT

241. DEPTH OF SCREEN

242. DEPTH OF PACKER

243. DEPTH OF ISOLATION

244. DEPTH OF CEMENT

245. DEPTH OF SCREEN

246. DEPTH OF PACKER

247. DEPTH OF ISOLATION

248. DEPTH OF CEMENT

249. DEPTH OF SCREEN

250. DEPTH OF PACKER

251. DEPTH OF ISOLATION

252. DEPTH OF CEMENT

253. DEPTH OF SCREEN

254. DEPTH OF PACKER

255. DEPTH OF ISOLATION

This form is to be filed with the appropriate District Office of the Commission not later than 30 days after the completion of the survey, drilled or dug well. It shall be returned to the owner of all electrically or radioactively contaminated wells and a summary of all special tests conducted, including drill stem tests. All data reported shall be measured depths. In the case of electrically drilled wells, true vertical depth shall also be reported. For multiple completions, Items 10 through 14 shall be reported for each zone. This form is to be filed in duplicate, the original and one true copy, where all copies are required. See Rule 103.

Mathematics New Mexico

Southwestern New Mexico

T. Anby	T. Canyon	T. Dip. Alarm	T. Penn. "H"
T. Ball	T. Strawn	T. Kirtland-Portland	T. Penn. "C"
T. Ball	T. Alicka	T. Pictured Cliffs	T. Penn. "D"
T. Bates	T. Moss	T. Cliff House	T. Leadville
T. 7 Rivers	T. Devonian	T. Monrovia	T. Madison
T. Queen	T. Wilston	T. Point Lookout	T. Elbert
T. Coalinga	T. Montoya	T. Mazon	T. M. Jackson
T. San Andres	T. Simpson	T. Gallup	T. Igou to Olato
T. Glaceta	F. Mc Kee	Hess Greenhorn	T. Granite
T. Packer	F. Whipple	T. Dakota	T. "
T. Timbex	T. Co. Wash.	T. Morrison	T. "
T. Tulb	T. Granite	T. Tachito	T. "
T. Denard	T. Delaware Sand	T. Entrala	T. "
T. Alto	T. Bone Springs	T. Wingate	T. "
T. Wolfcamp	T. "	T. Chino	T. "
T. Penn	T. "	T. Pennion	T. "
T. Clarno (Hough C)	T. "	T. Penn "A"	T. "

From	To	Thickness in Feet	Formation	From	To	Thickness in Feet	Formation
			<p><u>DBT #1</u> Interval- 4525' to 4555'. Well flowed 9.6 MMCF</p> <p>Dry gas perday.</p> <p>IHP---2257</p> <p>ISIP---1995</p> <p>I PP---1284</p> <p>PPP---1661</p> <p>PSIP---1994</p> <p>FHP---2241</p>				

Sec. 20 Township No. 21 North of Range No. 8 West

	<p>Tenneco Oil Co. Snake Eyes Well No. 1 660' FUL - 1980' FUL Spud: 6/21/71 Snake Eyes Dakota ★ 'D' Test 14 1/2 T.D. - 4739 P.A. d.: 1974</p>	<p>Rome Petroleum Corp. Santa Fe 20-21-8 Well No. 6 990' FUL - 2310' FUL Spud: 7/11/77 Snake Eyes Entrada ★ Oil Pool Completion T.D. - 6850' P.A. d.: 7/15/77</p>	<p>Rome Petroleum Corp. Santa Fe 20-21-8 Well No. 5 990' FUL Proposed location Only</p>
	<p>Mission Oil & Gas Corp. Santa Fe 20 Well No. 2 2150' FUL - 1980' FUL Spud: 7/22/77 T.D. - 5849 Snake Eyes Entrada Oil Comp.</p>	<p>Mission Oil & Gas Corp. Santa Fe 20 #1 1800' FUL - 3110' FUL Spud: 11/19/77 T.D. - 5814 Snake Eyes Entrada Oil Comp.</p>	<p>Mission Oil & Gas Corp. Santa Fe 20-21-8 #3 2220' FUL - 990' FUL Spud: 6/5/77 T.D. - 5844 Snake Eyes Entrada Oil Comp.</p>
	<p>Mission Oil & Gas Corp. Snake Eyes #2 1980' FUL - 1980' FUL Spud: 10/30/71 T.D. - 5629' Entrada Test P.A. d.: 8/4/73</p>		<p>Mission Oil & Gas Corp. Santa Fe 20 #4 2310' FUL - 990' FUL Spud: 7/15/79 T.D. - 5699' Entrada Test</p>

cc: 5 OCD

1 Well File

Form C-101
Revised 1-1-89Submit to Appropriate
District Office
State Lease - 6 copies
Fee Lease - 5 copiesState of New Mexico
Energy, Minerals and Natural Resources DepartmentOIL CONSERVATION DIVISION
P.O. Box 2088
Santa Fe, New Mexico 87504-2088DISTRICT I
P.O. Box 1980, Hobbs, NM 88240DISTRICT II
P.O. Drawer DD, Artesia, NM 88210DISTRICT III
1000 Rio Brazos Rd., Aztec, NM 87410

API NO. (assigned by OCD on New Wells)

30-045-20955

5. Indicate Type of Lease

STATE ☐FEE ☒

6. State Oil & Gas Lease No.

NM N5 277210

APPLICATION FOR PERMIT TO DRILL, DEEPEN, OR PLUG BACK

1a. Type of Work:

DRILL ☐RE-ENTER ☐DEEPEN ☒PLUG BACK ☐

b. Type of Well:

OIL
WELL ☐GAS
WELL ☒

OTHER

SINGLE
ZONE ☒MULTIPLE
ZONE ☐

7. Lease Name or Unit Agreement Name

Snake Eyes

8. Well No.

2

9. Pool name or Wildcat

Snake Eyes Dakota

4. Well Location

Unit Letter K : 1980 Feet From The South Line and 1980 Feet From The West LineSection 20 Township 21N Range 8W NMPM San Juan County

10. Proposed Depth

4700'

11. Formation

Dakota

12. Rotary or C.T.

13. Elevations (Show whether DF, RT, GR, etc.)

6560' OGL

14. Kind & Status Plug. Bond

P&A

15. Drilling Contractor

16. Approx. Date Work will start

17.

PROPOSED CASING AND CEMENT PROGRAM

SIZE OF HOLE	SIZE OF CASING	WEIGHT PER FOOT	SETTING DEPTH	SACKS OF CEMENT	EST. TOP

We would like to reenter the Snake Eyes #2 (currently P&A'd) and complete the well in the Dakota Formation. Attached is a procedure for your approval.

RECEIVED

DEC 06 1990

OIL CON. DIV
DIST. 3

APPROVAL EXPIRES 6-10-91
UNLESS DRILLING IS COMMENCED.
SPUD NOTICE MUST BE SUBMITTED
WITHIN 10 DAYS.

IN ABOVE SPACE DESCRIBE PROPOSED PROGRAM: IF PROPOSAL IS TO DEEPEN OR PLUG BACK, GIVE DATA ON PRESENT PRODUCTIVE ZONE AND PROPOSED NEW PRODUCTIVE ZONE. GIVE BLOWOUT PREVENTER PROGRAM, IF ANY.

I hereby certify that the information above is true and complete to the best of my knowledge and belief.

SIGNATURE George F. Sharpe TITLE Engineer DATE 12-6-90

TYPE OR PRINT NAME George F. Sharpe TELEPHONE NO. 505-327-9801

(This space for State Use)

APPROVED BY Ernest Blum DEPUTY OIL & GAS INSPECTOR, DIST. #3 DATE DEC 10 1990

CONDITIONS OF APPROVAL, IF ANY:

Hold c-104 FOR P&A + WSL

MERRION OIL & GAS CORPORATION

SNAKE EYES NO. 2

Re-Entry Procedure

LOCATION: 1980' FSL & 1980' FWL October 23, 1990
Sec. 20, T21N, R8W
San Juan County, New Mexico

ELEVATION: 6560' GL Prepared by: George F. Sharpe
6572' KB

- 1.) Cut off dry hole marker. Weld on bradenhead. Set anchors.
- 2.) MIRU. NU BOPs. Pick up 7-7/8" bit and drill collars. Drill out following cement plugs tripping for bit when necessary:
 - 0 - 28'
 - 42' - 160'
 - 223' - 400'
 - 902' - 950' 5-1/2" casing top
- 3.) POH w/ 7-7/8" bit. RIH w/ flat bottom mill and mill off top of 5-1/2" csg. POH. RIH w/ washpipe shoe. Wash over 5-1/2" csg to ±960' KB. POH. RIH w/ mill and dress off top of 5-1/2". POH.
- 4.) Pick up and RIH w/ 5-1/2" 15.5# csg w/ csg patch. Tie on to 5-1/2" @ 950'. Land 5-1/2" and install csg head.
- 5.) RIH w/ 4-3/4" bit and drill out cmt plug 950' to 1050'. Pressure test csg. If test good, go to step 9 and perform remedial cement job at a later date. If csg leaks, continue in hole and tag cement plug @ 4463'. Drill 50' to insure no trash in cement. Circ hole clean. POH.
- 6.) RU Wireline. Run CBL from 3500' to TOC (±2000'). RIH and perf sqz holes above TOC. RIH w/ tbq and CICR and set above squeeze holes.
- 7.) RU Cementers. Establish circulation. Cement csg to surface w/ procedure supplied @ later date. POH.
- 8.) RIH w/ 4-3/4" bit and drill out cmt through sqz holes. Pressure test csg to 1000 psi.

- 9.) Continue in hole and drill out cmt plug 4463' - 4620'. Circ hole clean. Swab well down to 2000'. POH.
- 10.) Run GR correlation log from PBTD to 3400'. RIH w/ 4" csg guns and perf 4580' - 4584' (5') and 4605' - 4608' (4') w/ 2 SPF (18 holes) @ 90°. (Induction log) POH. Swab in and test zone through a separator. Acidize if necessary.
- 11.) If zone looks wet, squeeze w/ 50 sx.
- 12.) Swab well down to 1500'. RIH w/ 4" csg guns and perf 4555' - 4560' (5') w/ 4 SPF (20 holes) @ 90°. RIH w/ 2-7/8" production string. Swab in and test through separator. Acidize if necessary. RDMOL.

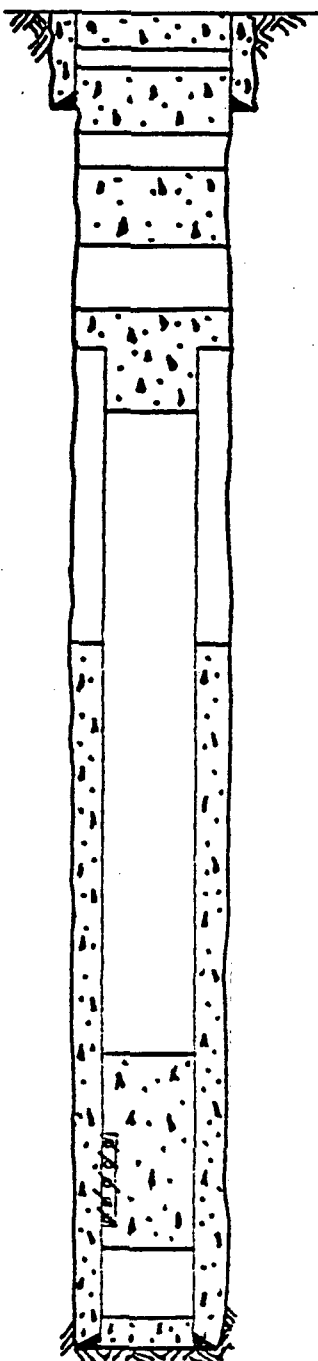
Approved: _____

Date: 10-24-90

WELLBORE SCHEMATIC

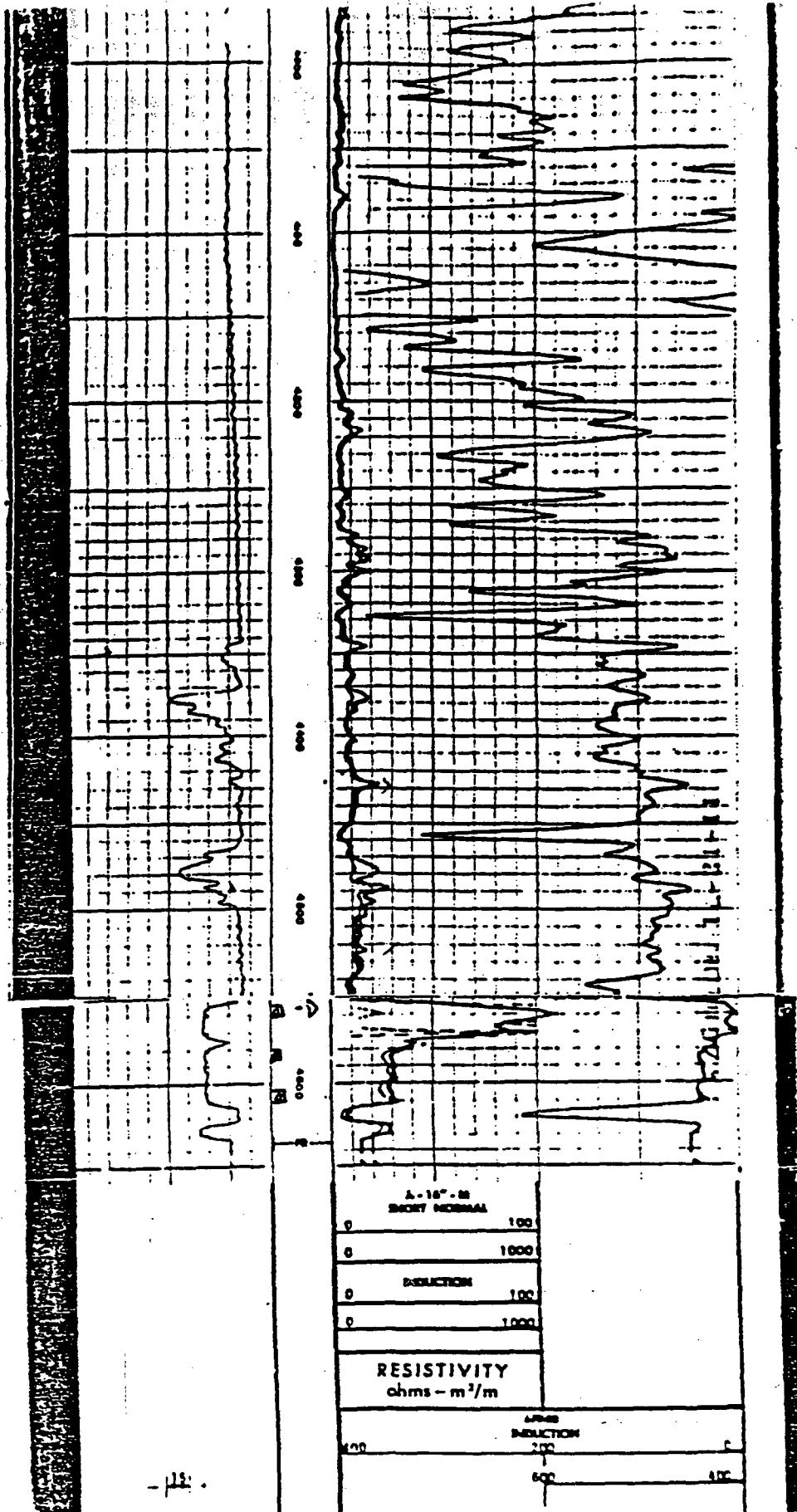
Location: 1980'FSL & 1980'FWL
Sec. 20, T21N, R8W
San Juan Co, New Mexico

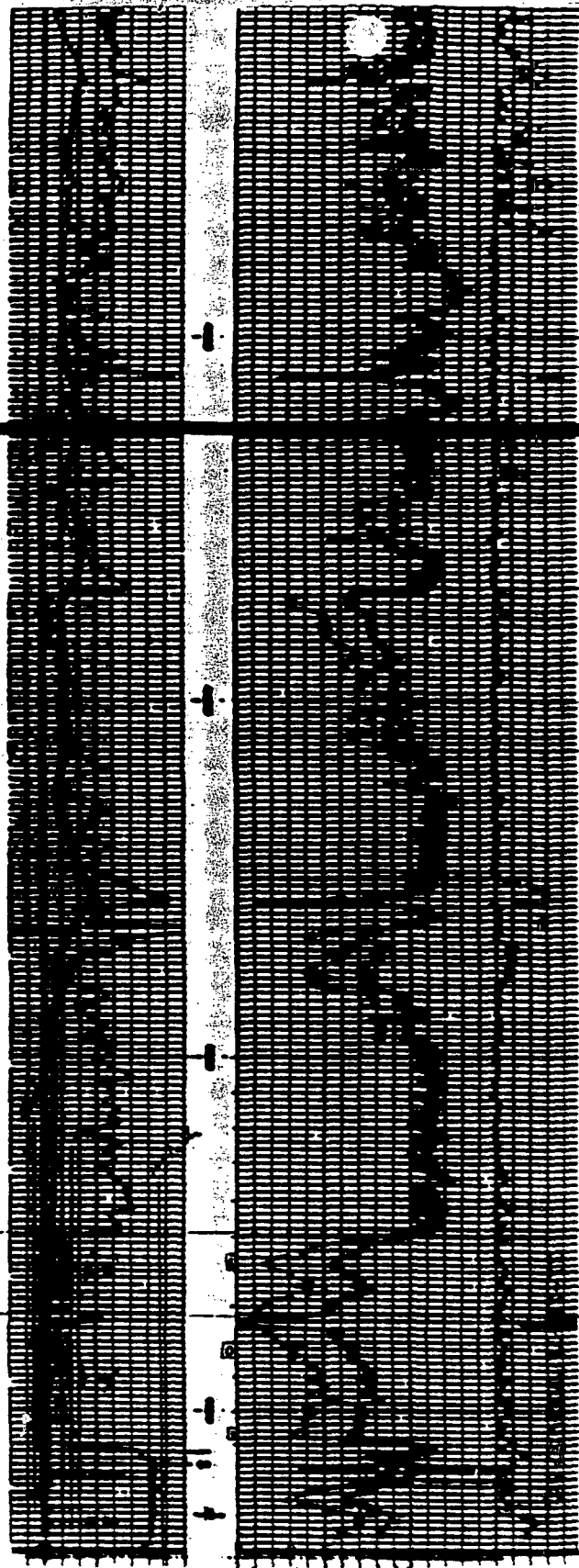
Operator: Tenneco



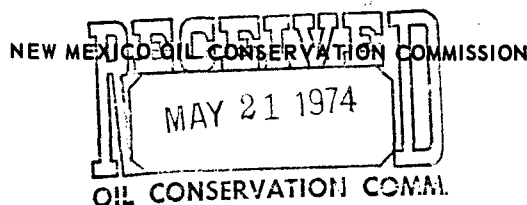
Tops	Depth
Fruitland	Surface
Pic Cliff	260
Cliffhouse	560
Menefee	610
Pt Lookout	2,550
Mancos	2,670
Gallup	3,450
Dakota	4,375

Capacities: 2 3/8" Tbg -	0.00387 Bbl/Ft
5 1/2" 15.5#Csg-	0.0238 Bbl/Ft
Annulus -	0.1732 Cuft/Ft





NO. OF COPIES RECEIVED	3
DISTRIBUTION	
SANTA FE	/
FILE	/
U.S.G.S.	
LAND OFFICE	
OPERATOR	/



Form C-103
Supersedes Old
C-102 and C-103
Effective 1-1-65

5a. Indicate Type of Lease
State <input type="checkbox"/> Fee <input checked="" type="checkbox"/>
5. State Oil & Gas Lease No.
7. Unit Agreement Name
8. Farm or Lease Name Snake Eyes
9. Well No. 2
10. Field and Pool, or Wildcat Wildcat
12. County San Juan

SUNDRY NOTICES AND REPORTS ON WELLS

(DO NOT USE THIS FORM FOR PROPOSALS TO DRILL OR TO DEEPEN OR PLUG BACK TO A DIFFERENT RESERVOIR. USE "APPLICATION FOR PERMIT -" (FORM C-101) FOR SUCH PROPOSALS.)

1. OIL WELL <input checked="" type="checkbox"/> GAS WELL <input type="checkbox"/> OTHER <input type="checkbox"/>
2. Name of Operator James P. Dunigan, Inc.
3. Address of Operator Box 23, Abilene, Texas 79604
4. Location of Well UNIT LETTER <u>K</u> <u>1980</u> FEET FROM THE <u>South</u> LINE AND <u>1980</u> FEET FROM THE <u>West</u> LINE, SECTION <u>20</u> TOWNSHIP <u>21N</u> RANGE <u>8W</u> NMPM.
15. Elevation (Show whether DF, RT, GR, etc.) 6560 GL, 6565 KB

16. Check Appropriate Box To Indicate Nature of Notice, Report or Other Data

NOTICE OF INTENTION TO:	SUBSEQUENT REPORT OF:
PERFORM REMEDIAL WORK <input type="checkbox"/>	REMEDIAL WORK <input type="checkbox"/>
TEMPORARILY ABANDON <input type="checkbox"/>	COMMENCE DRILLING OPNS. <input type="checkbox"/>
PULL OR ALTER CASING <input type="checkbox"/>	CASING TEST AND CEMENT JOBS <input type="checkbox"/>
OTHER <input type="checkbox"/>	OTHER <input type="checkbox"/>
PLUG AND ABANDON <input type="checkbox"/>	ALTERING CASING <input type="checkbox"/>
CHANGE PLANS <input type="checkbox"/>	PLUG AND ABANDONMENT <input checked="" type="checkbox"/>

17. Describe Proposed or Completed Operations (Clearly state all pertinent details, and give pertinent dates, including estimated date of starting any proposed work) SEE RULE 1103.

4 Aug 73 shot off and pulled 950 ft. 5 1/2" casing, spotted cement plugs as follows:
15 sx 5629-5507, 25 sx 4650-4463, 50 sx 1050-902, 60 sx 400-223, 40 sx 160-42,
10 sx 28' to surface with standard marker. Pits filled, location restored.



18. I hereby certify that the information above is true and complete to the best of my knowledge and belief.

SIGNED Brandon H. Gray TITLE Project Engineer DATE 16 May 74

APPROVED BY Ernest C. Cline TITLE SUPERVISOR DIST. 3 DATE 5.20.74

CONDITIONS OF APPROVAL, IF ANY:

NO. OF COPIES RECEIVED	5
DISTRIBUTION	
SANTA FE	1
FILE	1
U.S.G.S.	2
LAND OFFICE	
OPERATOR	1

INSTRUCTIONS

NEW MEXICO OIL CONSERVATION COMMISSION

WELL COMPLETION OR RECOMPLETION REPORT AND LOG

Form C-105
Revised 1-1-65

5a. Indicate Type of Lease

State ☐ Fee ☒

5. State Oil & Gas Lease No.

1a. TYPE OF WELL

OIL WELL ☐ GAS WELL ☐ DRY ☒ OTHER

b. TYPE OF COMPLETION

NEW WELL ☐ WORK OVER ☐ DEEPEN ☒ PLUG BACK ☐ DIFF. RESVR. ☐ OTHER

2. Name of Operator
James P. Dunigan, Inc.

3. Address of Operator
Box 23, Abilene, Texas 79604

4. Location of Well

UNIT LETTER K LOCATED 1980 FEET FROM THE south LINE AND 1980 FEET FROM THE west LINE OF SEC. 20 TWP. 21N RGE. 8W NMPM.

7. Unit Agreement Name

8. Farm or Lease Name
Snake Eyes

9. Well No.
2

10. Field and Pool, or Wildcat
Wildcat

12. County
San Juan

15. Date Spudded
30 Oct 71

16. Date T.D. Reached
4 Aug 73

17. Date Compl. (Ready to Prod.)
dry

18. Elevations (DF, RKB, RT, GR, etc.)
6560 GL, 6565 KB, 6560

19. Elev. Casinghead

20. Total Depth
5629

21. Plug Back T.D.

22. If Multiple Compl., How Many

23. Intervals Drilled By
Rotary Tools
Cable Tools

24. Producing Interval(s), of this completion - Top, Bottom, Name
Dakota 4551-4613 depleted

25. Was Directional Survey Made
No

26. Type Electric and Other Logs Run
IES

27. Was Well Cored
No

CASING RECORD (Report all strings set in well)					
CASING SIZE	WEIGHT LB./FT.	DEPTH SET	HOLE SIZE	CEMENTING RECORD	AMOUNT PULLED
8 5/8"	24	80	12 1/4"	140 sx circ.	-0-
5 1/2"	15.5	4630	7 7/8"	300 sx	950

LINER RECORD					TUBING RECORD		
SIZE	TOP	BOTTOM	SACKS CEMENT	SCREEN	SIZE	DEPTH SET	PACKER SET

31. Perforation Record (Interval, size and number)

32. ACID, SHOT, FRACTURE, CEMENT SQUEEZE, ETC.

DEPTH INTERVAL	AMOUNT AND KIND MATERIAL USED
----------------	-------------------------------

33. PRODUCTION

Date First Production

Production Method (Flowing, gas lift, pumping - Size and type pump)
No production after deepening

Well Status (Prod. or Shut-in)

Date of Test	Hours Tested	Choke Size	Prod'n. For Test Period	Oil - Bbl.	Gas - MCF	Water - Bbl.	Gas - Oil Ratio
Flow Tubing Press.	Casing Pressure	Calculated 24-Hour Rate	Oil - Bbl.	Gas - MCF	Water - Bbl.	Oil Gravity - API (Corr.)	

34. Disposition of Gas (Sold, used for fuel, vented, etc.)

Test Witnessed By

35. List of Attachments

36. I hereby certify that the information on both sides of this form is true and complete to the best of my knowledge and belief.

SIGNED Donna H. Gray TITLE Project Engineer DATE 8 Aug 73

INSTRUCTIONS

This form is to be filed with the appropriate District Office of the Commission not later than 20 days after the completion of any newly-drilled or deepened well. It shall be accompanied by one copy of all electrical and radio-activity logs run on the well and a summary of all special tests conducted, including drill stem tests. All depths reported shall be measured depths. In the case of directionally drilled wells, true vertical depths shall also be reported. For multiple completions, Items 30 through 34 shall be reported for each zone. The form is to be filed in quintuplicate except on state land, where six copies are required. See Rule 1105.

INDICATE FORMATION TOPS IN CONFORMANCE WITH GEOGRAPHICAL SECTION OF STATE

Southeastern New Mexico

Northwestern New Mexico

T. Anhy	T. Canyon	T. Ojo Alamo	T. Penn. "B"
T. Salt	T. Strawn	T. Kirtland-Fruitland	T. Penn. "C"
B. Salt	T. Atoka	T. Pictured Cliffs 260	T. Penn. "D"
T. Yates	T. Miss	T. Cliff House 560	T. Leadville
T. 7 Rivers	T. Devonian	T. Menefee 610	T. Madison
T. Queen	T. Silurian	T. Point Lookout 2550	T. Elbert
T. Grayburg	T. Montoya	T. Mancos 2670	T. McCracken
T. San Andres	T. Simpson	T. Gallup 3450	T. Ignacio Qtzte
T. Glorieta	T. McKee	Base Greenhorn 4330	T. Granite
T. Paddock	T. Ellenburger	T. Dakota 4375	T.
T. Blinebry	T. Gr. Wash	T. Morrison 4647	T.
T. Tubb	T. Granite	T. Todilto 5612	T.
T. Drinkard	T. Delaware Sand	T. Entrada 5623	T.
T. Abo	T. Bone Springs	T. Wingate	T.
T. Wolfcamp	T.	T. Chinle	T.
T. Penn.	T.	T. Permian	T.
T. Cisco (Bough C)	T.	T. Penn. "A"	T.

FORMATION RECORD (Attach additional sheets if necessary)

From	To	Thickness in Feet	Formation	From	To	Thickness in Feet	Formation
			See form C-103 for additional drill stem tests after deepening below 4630.				

RECEIVED
AUG 16 1973
OIL CONSERVATION COMM
Santa Fe

NO. OF COPIES RECEIVED	5
DISTRIBUTION	
SANTA FE	1
FILE	1
U.S.G.S.	
LAND OFFICE	
OPERATOR	3

NEW MEXICO OIL CONSERVATION COMMISSION

Form C-103
Supersedes Old
C-102 and C-103
Effective 1-1-65

<p align="center">SUNDRY NOTICES AND REPORTS ON WELLS</p> <p align="center"><small>(DO NOT USE THIS FORM FOR PROPOSALS TO DRILL OR TO DEEPEN OR PLUG BACK TO A DIFFERENT RESERVOIR. USE "APPLICATION FOR PERMIT -" (FORM C-101) FOR SUCH PROPOSALS.)</small></p>		<p>5a. Indicate Type of Lease State <input type="checkbox"/> Fee <input checked="" type="checkbox"/></p> <p>5. State Oil & Gas Lease No.</p>
<p>1. OIL WELL <input checked="" type="checkbox"/> GAS WELL <input type="checkbox"/> OTHER <input type="checkbox"/></p> <p>2. Name of Operator James P. Dunigan, Inc.</p> <p>3. Address of Operator Box 23, Abilene, Texas 79604</p> <p>4. Location of Well UNIT LETTER K 1980 FEET FROM THE south LINE AND 1980 FEET FROM THE west LINE, SECTION 20 TOWNSHIP 21N RANGE 8W NMPM.</p>	<p>7. Unit Agreement Name</p> <p>8. Farm or Lease Name Snake Eyes</p> <p>9. Well No. 2</p> <p>10. Field and Pool, or Wildcat Wildcat</p>	<p>15. Elevation (Show whether DF, RT, GR, etc.) 6560 GL, 6565 KB</p> <p>12. County San Juan</p>

16. Check Appropriate Box To Indicate Nature of Notice, Report or Other Data

<p>NOTICE OF INTENTION TO:</p> <p>PERFORM REMEDIAL WORK <input type="checkbox"/> PLUG AND ABANDON <input checked="" type="checkbox"/></p> <p>TEMPORARILY ABANDON <input type="checkbox"/> CHANGE PLANS <input type="checkbox"/></p> <p>PULL OR ALTER CASING <input type="checkbox"/> OTHER <input type="checkbox"/></p>		<p>SUBSEQUENT REPORT OF:</p> <p>REMEDIAL WORK <input type="checkbox"/> ALTERING CASING <input type="checkbox"/></p> <p>COMMENCE DRILLING OPNS. <input type="checkbox"/> PLUG AND ABANDONMENT <input type="checkbox"/></p> <p>CASING TEST AND CEMENT JOBS <input type="checkbox"/> OTHER <input type="checkbox"/></p>	
--	--	---	--

17. Describe Proposed or Completed Operations (Clearly state all pertinent details, and give pertinent dates, including estimated date of starting any proposed work) SEE RULE 1103.

Drilled 4 3/4" hole from 4630' to 5629'. DST #1 Morrison Sand 5580-5605, to 30" SI 30". rec. 35' mud, FP 27#, SIP 1942#. DST #2&3 miss muns. DST #4 Entrada 5583-5629, to 90", SI 30", rec. 4080' fresh water. FP 135-1473#, SIP 2350#. On 4 Aug 73 shot off and pulled 950' 5 1/2" casing, prepared to spot cement plugs as follows: 15 sx over Entrada in 4 3/4" hole from 5629 to 5507; 25 sx over Dakota from 4650 to 4463; 50 sx plug over Point Lookout from 1050 to 902; 60 sx plug over Pictured Cliffs from 400 to 223; 40 sx plug in base of surface casing from 160 to 42ft; 10 sx from 28' to surface, with standard 4" pipe marker at surface.



18. I hereby certify that the information above is true and complete to the best of my knowledge and belief.

SIGNED <u><i>James P. Dunigan</i></u>	TITLE <u>Project Engineer</u>	DATE <u>8 Aug 73</u>
APPROVED BY <u><i>Ernest Chavez</i></u>	TITLE <u>SUPERVISOR DIST. #3</u>	DATE <u>AUG 13 1973</u>

CONDITIONS OF APPROVAL, IF ANY:

AUG - 3 1972

All distances must be from the outer boundaries of the Section

Operator <i>Tenneco Oil Company</i>		Lease <i>Snake Eyes</i>		Oil Conservation <i>2</i>		Well No. <i>CCMM</i>	
Unit Letter <i>K</i>	Section <i>20</i>	Township <i>21</i>	Range <i>8</i>	County <i>McCurtain</i>			
Actual Footage Location of Well: <i>1980</i> feet from the <i>South</i> line and <i>1980</i> feet from the <i>West</i> line							
Ground Level Elev. <i>6560</i>	Producing Formation <i>Undesignated Dakota</i>		Pool <i>Dakota</i>		Dedicated Acreage: <i>320</i> Acres		

1. Outline the acreage dedicated to the subject well by colored pencil or hachure marks on the plat below.
2. If more than one lease is dedicated to the well, outline each and identify the ownership thereof (both as to working interest and royalty).
3. If more than one lease of different ownership is dedicated to the well, have the interests of all owners been consolidated by communitization, unitization, force-pooling, etc?

☐ Yes ☐ No If answer is "yes," type of consolidation

If answer is "no," list the owners and tract descriptions which have actually been consolidated. (Use reverse side of this form if necessary.)

No allowable will be assigned to the well until all interests have been consolidated (by communitization, unitization, forced-pooling, or otherwise) or until a non-standard unit, eliminating such interests, has been approved by the Commission.

CERTIFICATION

I hereby certify that the information contained herein is true and complete to the best of my knowledge and belief.

Name _____

Position

Company

Date _____

I hereby certify that the well location shown on this plat was plotted from field notes of actual surveys made by me or under my supervision, and that the same is true and correct to the best of my knowledge and belief.

Date Surveyed

Registered Professional Engineer
and/or Land Surveyor

Certificate No.

0	330	660	990	1320	1650	1980	2310	2640	2000	1500	1000	500	0
---	-----	-----	-----	------	------	------	------	------	------	------	------	-----	---

NO. OF COPIES RECEIVED	4
DISTRIBUTION	
SANTA FE	1 ✓
FILE	1
U.S.G.S.	
LAND OFFICE	
OPERATOR	2

NEW MEXICO OIL CONSERVATION COMMISSION

Form C-103
Supersedes Old
C-102 and C-103
Effective 1-1-65

5a. Indicate Type of Lease	
State <input type="checkbox"/>	Fee <input checked="" type="checkbox"/>
5. State Oil & Gas Lease No.	

SUNDRY NOTICES AND REPORTS ON WELLS

(DO NOT USE THIS FORM FOR PROPOSALS TO DRILL OR TO DEEPEN OR PLUG BACK TO A DIFFERENT RESERVOIR.
USE "APPLICATION FOR PERMIT -" (FORM C-101) FOR SUCH PROPOSALS.)

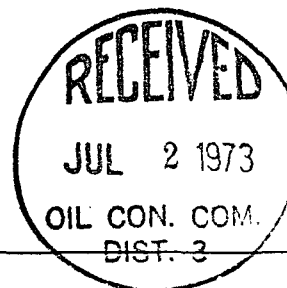
1. OIL WELL <input checked="" type="checkbox"/> GAS WELL <input type="checkbox"/> OTHER <input type="checkbox"/>		7. Unit Agreement Name	
2. Name of Operator James P. Dunigan, Inc.		8. Farm or Lease Name Snake Eyes	
3. Address of Operator Box 23, Abilene, Texas 79604		9. Well No. 2	
4. Location of Well UNIT LETTER K 1980 FEET FROM THE south LINE AND 1980 FEET FROM THE west LINE, SECTION 20 TOWNSHIP 21N RANGE 8W NMPM.		10. Field and Pool, or Wildcat Wildcat	
15. Elevation (Show whether DF, RT, GR, etc.) 6560 GL		12. County San Juan	

16. Check Appropriate Box To Indicate Nature of Notice, Report or Other Data
NOTICE OF INTENTION TO: SUBSEQUENT REPORT OF:

PERFORM REMEDIAL WORK <input type="checkbox"/>	PLUG AND ABANDON <input type="checkbox"/>	REMEDIAL WORK <input type="checkbox"/>	ALTERING CASING <input type="checkbox"/>
TEMPORARILY ABANDON <input type="checkbox"/>	CHANGE PLANS <input type="checkbox"/>	COMMENCE DRILLING OPNS. <input type="checkbox"/>	PLUG AND ABANDONMENT <input type="checkbox"/>
PULL OR ALTER CASING <input type="checkbox"/>	OTHER <input checked="" type="checkbox"/> Deepen	CASING TEST AND CEMENT JOBS <input type="checkbox"/>	

17. Describe Proposed or Completed Operations (Clearly state all pertinent details, and give pertinent dates, including estimated date of starting any proposed work) SEE RULE 1103.

This well has been purchased from Tenneco Oil Company, and was formerly a gas well in McKinley? Undes. Dakota Field. 5 1/2" casing is set at 4630 with open perforations from 4555 to 4608. This zone is depleted. The operator is changed to James P. Dunigan, Inc., and we propose to deepen the well to the Entrada Formation, drilling a 4 3/4" hole to approximately 6000 feet. A 2 7/8" liner will be set from TD to approximately 4400 feet and circulated with cement in the event of a completion attempt in the Entrada. Operations will commence about 15 Jul 73. A 40 acre proration unit of NE4 SW4 Sec. 20 is assigned.



18. I hereby certify that the information above is true and complete to the best of my knowledge and belief.

SIGNED Gordon H. Bay TITLE Project Engineer DATE 29 Jun 73

APPROVED BY Quincy C. Currier TITLE SUPERVISOR DIST. #3 DATE JUL 2 1973

CONDITIONS OF APPROVAL, IF ANY:

Need New e-102 prior to production

NO. OF COPIES RECEIVED	7
DISTRIBUTION	
SANTA FE	1
FILE	1
U.S.G.S.	
LAND OFFICE	
TRANSPORTER	OIL 1 GAS 1
OPERATOR	3
PRORATION OFFICE	

NEW MEXICO OIL CONSERVATION COMMISSION
REQUEST FOR ALLOWABLE
AND
AUTHORIZATION TO TRANSPORT OIL AND NATURAL GAS

Form C-104
Supersedes Old C-104 and C-110
Effective 1-1-65

RECEIVED

0 1972

Operator	Tenneco Oil Company
Address	Suite 1200 Lincoln Tower Bldg., -Denver, Colorado 80203
Reason(s) for filing (Check proper box)	Other (Please explain)
New Well <input checked="" type="checkbox"/>	Change in Transporter of:
Recompletion <input type="checkbox"/>	Oil <input type="checkbox"/> Dry Gas <input type="checkbox"/>
Change in Ownership <input type="checkbox"/>	Casinghead Gas <input type="checkbox"/> Condensate <input type="checkbox"/>

If change of ownership give name and address of previous owner

DESCRIPTION OF WELL AND LEASE

Lease Name	Well No.	Pool Name, Including Formation	Kind of Lease	Lease No.
Snake Eyes	2	Undesignated Dakots	State, Federal or Fee Fee	
Location				
Unit Letter K	1980'	Feet From The South Line and	1980	Feet From The West
Line of Section 20	Township 21-N	Range 8-W	NMPM, McKinley Co., N.M.	

DESIGNATION OF TRANSPORTER OF OIL AND NATURAL GAS

Name of Authorized Transporter of Oil <input type="checkbox"/> or Condensate <input checked="" type="checkbox"/>	Address (Give address to which approved copy of this form is to be sent)
Plateau Inc.	Box 108 Farmington, New Mexico
Name of Authorized Transporter of Casinghead Gas <input type="checkbox"/> or Dry Gas <input checked="" type="checkbox"/>	Address (Give address to which approved copy of this form is to be sent)
Anderson Oil Company	635 Majestic Bldg., -Denver, Colorado
If well produces oil or liquids, give location of tanks.	Unit Sec. Twp. Rge. Is gas actually connected? When
K 20 21 8	NO

If this production is commingled with that from any other lease or pool, give commingling order number:

COMPLETION DATA

Designate Type of Completion - (X)	Oil Well	Gas Well	New Well	Workover	Deepen	Plug Back	Same Res'v.	Diff. Res'v.
		X	X					
Date Spudded	Date Compl. Ready to Prod.	Total Depth	P.B.T.D.					
10-30-71	12-21-71	4630	4618					
Elevations (DF, RKB, RT, GR, etc.)	Name of Producing Formation	Top Oil/Gas Pay	Tubing Depth					
6560 GR	Dakota	4551	4657					
Perforations							Depth Casing Shoe	

TUBING, CASING, AND CEMENTING RECORD

HOLE SIZE	CASING & TUBING SIZE	DEPTH SET	SACKS CEMENT
12 - 1/4	8 - 5/8	62	40 Sks Cir.
7 - 7/8	5 - 1/2	4630	300 Sks

TEST DATA AND REQUEST FOR ALLOWABLE OIL WELL

(Test must be after recovery of total volume of load oil and must be equal to or exceed top allowable for this depth or be for full 24 hours)

Date First New Oil Run To Tanks	Date of Test	Producing Method (Flow, pump, gas lift, etc.)	
Length of Test	Tubing Pressure	Casing Pressure	Choke Size
Actual Prod. During Test	Oil-Bbls.	Water-Bbls.	Gas-MCF

GAS WELL

Actual Prod. Test-MCF/D	Length of Test	Bbls. Condensate/MMCF	Gravity of Condensate
9300	24 hrs.	10	55°
Testing Method (pitot, back pr.)	Tubing Pressure (Shut-in)	Casing Pressure (Shut-in)	Choke Size
Back Pressure	1658	Packer	4 - Piont

CERTIFICATE OF COMPLIANCE

I hereby certify that the rules and regulations of the Oil Conservation Commission have been complied with and that the information given above is true and complete to the best of my knowledge and belief.

G.A. Ford
(Signature)
Sr. Production Clerk
(Title)
February 4, 1972
(Date)

OIL CONSERVATION COMMISSION

APPROVED FEB 7 1972, 19
BY *Curry C. Covel*
SUPERVISOR DIST. #3
TITLE

This form is to be filed in compliance with RULE 1104.
If this is a request for allowable for a newly drilled or deepened well, this form must be accompanied by a tabulation of the deviation tests taken on the well in accordance with RULE 111.
All sections of this form must be filled out completely for allowable on new and recompleted wells.
Fill out only Sections I, II, III, and VI for changes of owner, well name or number, or transporter, or other such change of condition.
Separate Forms C-104 must be filed for each pool in multiply completed wells.

NO. OF COPIES RECEIVED	5
DISTRIBUTION	
SANTA FE	1
FILE	1
U.S.G.S.	
LAND OFFICE	
OPERATOR	8

NEW MEXICO OIL CONSERVATION COMMISSION

RECEIVED

JAN 13 1972

Form C-103
Supersedes Old
C-102 and C-103
Effective 1-1-65

OIL CONSERVATION COMM.

SUNDRY NOTICES AND REPORTS ON WELLS

(DO NOT USE THIS FORM FOR PROPOSALS TO DRILL OR TO DEEPEN OR PLUG BACK TO A DIFFERENT RESERVOIR. USE "APPLICATION FOR PERMIT" (FORM C-101) FOR SUCH PROPOSALS.)

1. OIL WELL <input type="checkbox"/> GAS WELL <input checked="" type="checkbox"/> OTHER- 2. Name of Operator Tenneco Oil Company 3. Address of Operator Suite 1200, Lincoln Tower Bldg, Denver, Colorado 80203 4. Location of Well UNIT LETTER K, 1980 FEET FROM THE south LINE AND 1980 FEET FROM THE west LINE, SECTION 20 TOWNSHIP 21-N RANGE 8-W NMPM.	5a. Indicate Type of Lease State <input type="checkbox"/> Fee <input checked="" type="checkbox"/> 5. State Oil & Gas Lease No. 7. Unit Agreement Name 8. Farm or Lease Name Snake Eyes 9. Well No. #2 10. Field and Pool, or Wildcat Undesignated Dakota 15. Elevation (Show whether DF, RT, GR, etc.) 6560 GR 12. County McKinley
--	---

16.

Check Appropriate Box To Indicate Nature of Notice, Report or Other Data

NOTICE OF INTENTION TO:

PERFORM REMEDIAL WORK ☐
TEMPORARILY ABANDON ☐
PULL OR ALTER CASING ☐

PLUG AND ABANDON ☐
CHANGE PLANS ☐

OTHER ☐

SUBSEQUENT REPORT OF:

REMEDIAL WORK ☐
COMMENCE DRILLING OPNS. ☐
CASING TEST AND CEMENT JOB ☒
OTHER ☐

ALTERING CASING ☐
PLUG AND ABANDONMENT ☐

Perforate and acidize ☒

17. Describe Proposed or Completed Operations (Clearly state all pertinent details, and give pertinent dates, including estimated date of starting any proposed work) SEE RULE 1703.

Moved in completion unit 11/15/71, tested casing and B. O. P. to 1000 psi; held ok. Cleaned out to P. B. T. D. of 4618'. Perforated 4605'-08', 4555'-60' and 4580'-84'. Acidized 4605'-08' w/500 gals 15% HCL and 4555'-84' w/1000 gals. 15% HCL. Ran 2-7/8" tubing landed at 4567', swabbed, blew well to clean up well tested 12/21/71, 24 hrs. 40/64 choke, 3697 MCF, 5 BBLs. water, FTP and CP-1525. A.O.F. 10 MM CF/D T.D. 4630' and P. B. T. 4618' well. S. I. for market



18. I hereby certify that the information above is true and complete to the best of my knowledge and belief.

SIGNED

TITLE

Sr. Production Clerk

DATE

12/22/71

APPROVED BY

TITLE

SUPERVISOR DIST. #3

DATE

JAN 6 1972

CONDITIONS OF APPROVAL, IF ANY:

NO. OF COPIES RECEIVED	5
DISTRIBUTION	
SANTA FE	1
FILE	1
U.S.G.S.	2
LAND OFFICE	
OPERATOR	1

14010047341

Form C-105.
Revised 1-1-65

NEW MEXICO OIL CONSERVATION COMMISSION
WELL COMPLETION OR RECOMPLETION REPORT AND LOG

5a. Indicate Type of Lease	State <input type="checkbox"/> Fee <input checked="" type="checkbox"/>
5. State Oil & Gas Lease No.	

RECEIVED
JAN 10 1972

1a. TYPE OF WELL		OIL WELL <input type="checkbox"/> GAS WELL <input checked="" type="checkbox"/> DRY <input type="checkbox"/> OTHER <input type="checkbox"/>		7. Unit Agreement Name	
b. TYPE OF COMPLETION		NEW WELL <input checked="" type="checkbox"/> WORK OVER <input type="checkbox"/> DEEPEN <input type="checkbox"/> PLUG BACK <input type="checkbox"/> DIFF. RESVR. <input type="checkbox"/>		8. Farm or Lease Name Snake Eyes	
2. Name of Operator Tenneco Oil Company		3. Address of Operator Suite 1200, Lincoln Tower Building, Denver, Colorado 80203		9. Well No. #2	
4. Location of Well		UNIT LETTER K LOCATED 1980' FEET FROM THE South LINE AND 1980' FEET FROM THE West LINE OF SEC. 20 TWP. 21-N RGE. 8-W NMPM		10. Field and Pool, or Wildcat Undesignated Dakota	
15. Date Spudded 10-30-71	16. Date T.D. Reached 11-9-71	17. Date Compl. (Ready to Prod.) 12-21-71	18. Elevations (DE, RKB, RT, GR, etc.) 6560 GR	19. Elev. Casinghead	
20. Total Depth 4630	21. Plug Back T.D. 4618	22. If Multiple Compl., How Many	23. Intervals, Rotary Tools 4630	24. Producing Interval(s), of this completion - Top, Bottom, Name 4551'-4613' Dakota "D"	
25. Was Directional Survey Made YES				26. Type Electric and Other Logs Run IES, FDC-GR, BHC-SONIC	
27. Was Well Cored No					
28. CASING RECORD (Report all strings set in well)					
CASING SIZE	WEIGHT LB./FT.	DEPTH SET	HOLE SIZE	CEMENTING RECORD	AMOUNT PULLED
8-5/8"	24	62	12-1/4"	40 sks. circulated	
5-1/2"	15.5	4630	7-7/8"	300 sacks	
29. LINER RECORD					
SIZE	TOP	BOTTOM	SACKS CEMENT	SCREEN	
30. TUBING RECORD					
SIZE	DEPTH SET	PACKER SET			
2-7/8	4657				
31. Perforation Record (Interval, size and number)			32. ACID, SHOT, FRACTURE, CEMENT SQUEEZE, ETC.		
4605'-08', 4555'-60', and 4580'-84', w/2 JSPF			DEPT. INTERVAL		
			AMOUNT AND KIND MATERIAL USED		
			4605-08 500 gals. 15% HCL		
			4555-84 1000 gals. 15% HCL		
33. PRODUCTION					
Date First Production 11-15-71		Production Method (Flowing, gas lift, pumping - Size and type pump)			Well Status (Prod. or Shut-in) Shut In
Date of Test 12/21/71	Hours Tested 24	Choke Size 40/64	Prod'n. For Test Period	Oil - Bbl. 3697	Gas - MCF 5
Flow Tubing Press. 1525	Casing Pressure 1525	Calculated 24-Hour Rate	Oil - Bbl.	Gas - MCF 3697	Water - Bbl. 5
34. Disposition of Gas (Sold, used for fuel, vented, etc.) Well shut in-----pending market					Test Witnessed By Max Webb
35. List of Attachments None					
36. I hereby certify that the information shown on both sides of this form is true and complete to the best of my knowledge and belief.					
SIGNED E. A. Ford		TITLE Sr. Production Clerk		DATE 12/22/71	

SECRET

INDICATE FORMATION TOPS IN CONFORMANCE WITH GEOGRAPHICAL SECTION OF STATE

Northwestern New Mexico

FORMATION RECORD (Attach additional sheets if necessary)

From	To	Thickness in Feet	Formation	From	To	Thickness in Feet	Formation
			<p>Formation</p> <p>Interval- 4525' to 4555'. Well flowed 9.6 MMCF</p> <p>DST #1</p> <p>Dry gas perday.</p> <p>IHP---2257</p> <p>ISIP---1995</p> <p>I FFP---1284</p> <p>FFP---1661</p> <p>FSIP---1994</p> <p>FHP---2241</p>				

NO. OF COPIES RECEIVED	3
DISTRIBUTION	
SANTA FE	1
FILE	1
U.S.G.S.	
LAND OFFICE	
OPERATOR	1

NEW MEXICO OIL CONSERVATION COMMISSION

RECEIVED

DEC - 9 1971

CONSERVATION COMM.

Form C-103
Supersedes Old
C-102 and C-103
Effective 1-1-65

5a. Indicate Type of Lease
State ☐ Fee ☒

5. State Oil & Gas Lease No.

SUNDRY NOTICES AND REPORTS ON WELLS
(DO NOT USE THIS FORM FOR PROPOSALS TO DRILL OR TO DEEPEN OR PLUG BACK TO A DIFFERENT RESERVOIR.
USE "APPLICATION FOR PERMIT -" (FORM C-101) FOR SUCH PROPOSALS.)

1. OIL WELL <input type="checkbox"/> GAS WELL <input checked="" type="checkbox"/> OTHER- 2. Name of Operator Tenneco Oil Company 3. Address of Operator Suite 1200 Lincoln Tower Bldg., -Denver, Colorado 80203 4. Location of Well UNIT LETTER K 1980 FEET FROM THE South LINE AND 1980 FEET FROM THE West LINE, SECTION 20 TOWNSHIP 21-N RANGE 8-W NMPM.	7. Unit Agreement Name 8. Farm or Lease Name Snake Eyes 9. Well No. 2 10. Field and Pool, or Wildcat Snake Eyes 15. Elevation (Show whether DF, RT, GR, etc.) 6560 GR 12. County McKINLEY
--	---

16. Check Appropriate Box To Indicate Nature of Notice, Report or Other Data

NOTICE OF INTENTION TO:		SUBSEQUENT REPORT OF:	
PERFORM REMEDIAL WORK <input type="checkbox"/>	PLUG AND ABANDON <input type="checkbox"/>	REMEDIAL WORK <input type="checkbox"/>	ALTERING CASING <input type="checkbox"/>
TEMPORARILY ABANDON <input type="checkbox"/>	CHANGE PLANS <input type="checkbox"/>	COMMENCE DRILLING OPNS. <input type="checkbox"/>	PLUG AND ABANDONMENT <input type="checkbox"/>
PULL OR ALTER CASING <input type="checkbox"/>	OTHER Change of Well Name only <input checked="" type="checkbox"/>	CASING TEST AND CEMENT JOBS <input type="checkbox"/>	OTHER <input type="checkbox"/>

17. Describe Proposed or Completed Operations (Clearly state all pertinent details, and give pertinent dates, including estimated date of starting any proposed work) SEE RULE 1103.

NOW READS: Snake Eyes "A" well No. 1

SHOULD READ: Snake Eyes well No. 2

Please reference intention to drill, dated october 18, 1971.



18. I hereby certify that the information above is true and complete to the best of my knowledge and belief.

SIGNED G.A. Ford TITLE Sr. Production Clerk DATE 12-3-71

APPROVED BY Ernest C. [Signature] TITLE SUPERVISOR DIST. #3 DATE DEC 6 1971

CONDITIONS OF APPROVAL, IF ANY:

NO. OF COPIES RECEIVED	3
DISTRIBUTION	
SANTA FE	1
FILE	1
U.S.G.S.	
LAND OFFICE	
OPERATOR	1

NEW MEXICO OIL CONSERVATION COMMISSION

Form C-103
Supersedes Old
C-102 and C-103
Effective 1-1-65

5a. Indicate Type of Lease	State <input type="checkbox"/>	Fee <input checked="" type="checkbox"/>
5. State Oil & Gas Lease No.		

SUNDRY NOTICES AND REPORTS ON WELLS (DO NOT USE THIS FORM FOR PROPOSALS TO DRILL OR TO DEEPEN OR PLUG BACK TO A DIFFERENT RESERVOIR. USE "APPLICATION FOR PERMIT" (FORM C-101) FOR SUCH PROPOSALS.)

1. OIL WELL <input checked="" type="checkbox"/> GAS WELL <input type="checkbox"/> OTHER- <input type="checkbox"/>	7. Unit Agreement Name
2. Name of Operator Tenneco Oil Company	8. Farm or Lease Name Snake Eyes "A"
3. Address of Operator Suite 1200, Lincoln Tower Bldg. Denver, Colo. 80203	9. Well No. 1
4. Location of Well UNIT LETTER <u>K</u> 1980 FEET FROM THE <u>South</u> LINE AND 1980 FEET FROM THE <u>West</u> LINE, SECTION <u>20</u> TOWNSHIP <u>21N</u> RANGE <u>8W</u> NMPM.	10. Field and Pool, or Wildcat Undesignated Dakota
15. Elevation (Show whether DF, RT, GR, etc.) 6560 GR.	12. County McKinley

RECEIVED
NOV 16 1971
OIL CONSERVATION COM.
SANTA FE

Check Appropriate Box To Indicate Nature of Notice, Report or Other Data NOTICE OF INTENTION TO:

PERFORM REMEDIAL WORK <input type="checkbox"/>	PLUG AND ABANDON <input type="checkbox"/>
TEMPORARILY ABANDON <input type="checkbox"/>	CHANGE PLANS <input type="checkbox"/>
PULL OR ALTER CASING <input type="checkbox"/>	OTHER <input type="checkbox"/>

SUBSEQUENT REPORT OF:

REMEDIAL WORK <input type="checkbox"/>	ALTERING CASING <input type="checkbox"/>
COMMENCE DRILLING OPNS. <input type="checkbox"/>	PLUG AND ABANDONMENT <input type="checkbox"/>
CASING TEST AND CEMENT JOB <input checked="" type="checkbox"/>	OTHER <input type="checkbox"/>

17. Describe Proposed or Completed Operations (Clearly state all pertinent details, and give pertinent dates, including estimated date of starting any proposed work) SEE RULE 1103.

Well spudded 10/30/71 with 12- $\frac{1}{4}$ " hole and drilled to T. D. of 62', ran 2 jts. of 8-5/8" 24# casing landed at 62', cemented with 40 sacks circulated. Tested casing and B. O. P. to 1000 psi, held OK. Drilled out with 7-7/8" hole to T. D. of 4630' on 11/9/71, logged, ran 143 jts. of 5- $\frac{1}{2}$ " 15.5 # casing landed at 4630', cemented with 300 sacks. Released rig 11/10/71 and now waiting on completion unit.

RECEIVED
NOV 15 1971
OIL CON. COM.
DIST. 3

18. I hereby certify that the information above is true and complete to the best of my knowledge and belief.

SIGNED <u>B.A. Zou</u>	TITLE <u>Sr. Production Clerk</u>	DATE <u>11/11/71</u>
APPROVED BY <u>Emory Law</u>	TITLE <u>SUPERVISOR DIST. #3</u>	DATE <u>NOV 15 1971</u>
CONDITIONS OF APPROVAL, IF ANY:		

NO. OF COPIES RECEIVED	5
DISTRIBUTION	
SANTA FE	1 ✓
FILE	1
U.S.G.S.	2
LAND OFFICE	
OPERATOR	1

NEW MEXICO OIL CONSERVATION COMMISSION

RECEIVED

OCT 20 1971

OIL CONSERVATION COMM.
SANTA FE

Form C-101
Revised 1-1-65 30-045-20955

5A. Indicate Type of Lease	
STATE <input type="checkbox"/>	FEE <input checked="" type="checkbox"/>

5. State Oil & Gas Lease No.

APPLICATION FOR PERMIT TO DRILL, DEEPEN, OR PLUG BACK

1a. Type of Work			7. Unit Agreement Name		
b. Type of Well DRILL <input checked="" type="checkbox"/> DEEPEN <input type="checkbox"/> PLUG BACK <input type="checkbox"/> OIL WELL <input checked="" type="checkbox"/> GAS WELL <input type="checkbox"/> OTHER <input type="checkbox"/> SINGLE ZONE <input checked="" type="checkbox"/> MULTIPLE ZONE <input type="checkbox"/>			8. Farm or Lease Name Snake Eyes "A"		
2. Name of Operator Tenneco Oil Company			9. Well No. 1		
3. Address of Operator Suite 1200 Lincoln Tower Building, Denver, Colo. 80203			10. Field and Pool, or Wildcat Undesignated Dakota		
4. Location of Well UNIT LETTER K LOCATED 1980 FEET FROM THE South LINE AND 1980 FEET FROM THE West LINE OF SEC. 20 TWP. 21-N RGE. 8-W NMPM			12. County San Juan		
19. Proposed Depth 4700'			19A. Formation Top JM		20. Rotary or C.T. Rotary
21. Elevations (Show whether DF, RT, etc.) See Below	21A. Kind & Status Plug. Bond	21B. Drilling Contractor Unknown	22. Approx. Date Work will start Upon Approval		

PROPOSED CASING AND CEMENT PROGRAM

SIZE OF HOLE	SIZE OF CASING	WEIGHT PER FOOT	SETTING DEPTH	SACKS OF CEMENT	EST. TOP
12-1/4	8-5/8"	24	60'	suff. to circulate	
7-7/8	5-1/2	15.5	4700'	suff. to fill	
				500' above shallowest pay zone.	

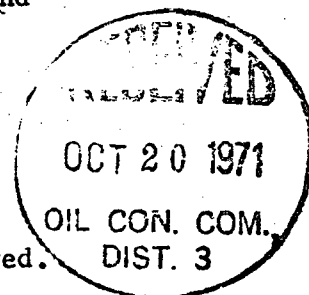
Well to be drilled to approximately 4700', Log, and if commercial production is indicated, casing will be run to T.D., perforated, and formation treated as necessary to establish commercial production.

B.O.P. to be tested each 24 hours.

APPROVAL VALID
FOR 90 DAYS UNLESS
DRILLING COMMENCED,

EXPIRES 1-18-72

Note: Elevation and certified plats will be forwarded when received.



IN ABOVE SPACE DESCRIBE PROPOSED PROGRAM: IF PROPOSAL IS TO DEEPEN OR PLUG BACK, GIVE DATA ON PRESENT PRODUCTIVE ZONE AND PROPOSED NEW PRODUCTIVE ZONE. GIVE BLOWOUT PREVENTER PROGRAM, IF ANY.

I hereby certify that the information above is true and complete to the best of my knowledge and belief.

Signed B. A. Ford Title Sr. Production Clerk Date 10-18-71

(This space for State Use)

APPROVED BY Gregory C. Curren TITLE Sup. Dist. III DATE 10-20-71

CONDITIONS OF APPROVAL, IF ANY:

NEW MEXICO OIL CONSERVATION COM.
WELL LOCATION AND ACERAGE DEDICATION PLAT

All distances must be from the outer boundaries of the Section.

RECEIVED
OCT 20 1971
OIL CON. COM. 1-4
SANTA FE

Operator TENNECO OIL COMPANY		Lease SNAKE EYES A		Well No. 1-4	
Unit Letter K	Section 20	Township 21 NORTH	Range 8 WEST	County SAN JUAN	
Actual Footage Location of Well: 1980 feet from the SOUTH line and 1980 feet from the WEST line					
Ground Level Elev. 6560.0	Producing Formation Dakota		Pool Undesignated Dakota	Dedicated Acreage 40	Acres

- Outline the acreage dedicated to the subject well by colored pencil or hatchure marks on the plat below.
- If more than one lease is dedicated to the well, outline each and identify the ownership thereof (showing working interest and royalty).
- If more than one lease of different ownership is dedicated to the well, have the interests of all owners been consolidated by communitization, unitization, force-pooling, etc?

() Yes () No If answer is "yes," type of consolidation _____

If answer is "no," list the owners and tract descriptions which have actually consolidated (Use reverse of this form if necessary.) _____

No allowable will be assigned to the well until all interests have been consolidated (by communitization, unitization, forced-pooling, or otherwise) or until a non standard unit, eliminating such interests, has been approved by the Commission.

CERTIFICATION

I hereby certify that the information contained herein is true and complete to the best of my knowledge and belief.

Name **G. A. Ford**

Position **Sr. Production Clerk**

Company **Tenneco Oil Company**

Date **10-19-71**

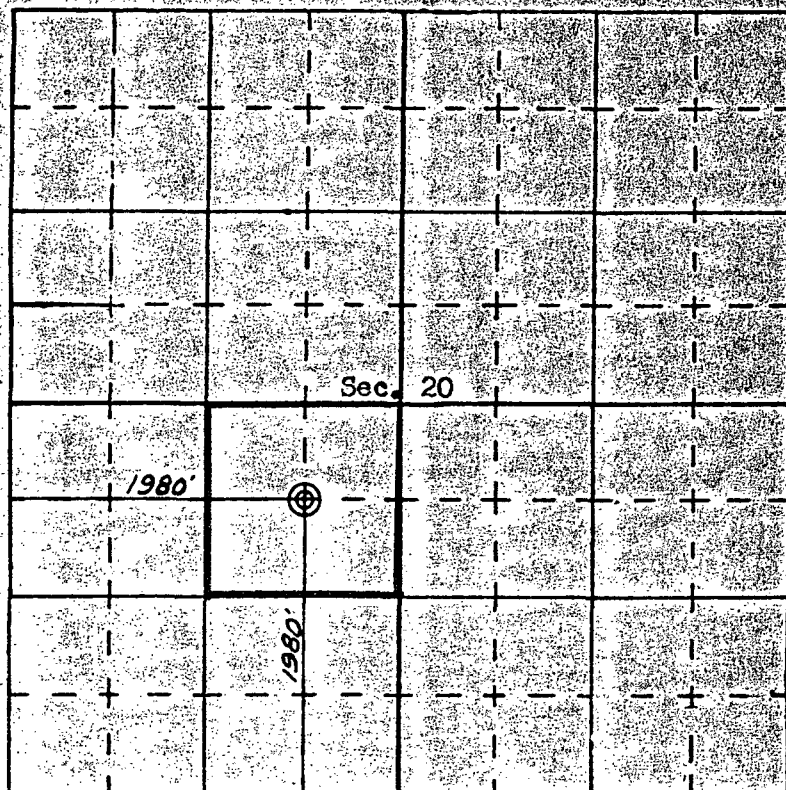
I hereby certify that the well location shown on this plat was plotted from field notes of actual surveys made by me or under my supervision, and that the same is true and correct to the best of my knowledge and belief.

Date **12 October, 1971**

Registered Professional Engineer and/or Land Surveyor

JAMES P. LERSE

Certificate No. **1563-MES 2-155**



SCALE—4 INCHES EQUALS 1 MILE

SAN JUAN ENGINEERING COMPANY, FARMINGTON, N. M.