

04746
29584



Chevron

(4323)

Chevron U.S.A. Production Company
P.O. Box 1150
Midland, TX 79702

February 7, 1994
Midland, Texas

Administrative Application for Unorthodox
Well Location and Simultaneous Dedication
Eumont (Pro Gas) Pool
1830' FSL AND 600' FWL
Section 21, T-21-S, R-36-E
Lea County, New Mexico

Rec. 2-8-94

State of New Mexico
Energy, Minerals & Natural Resources Dept.
Oil Conservation Division
P. O. Box 2088
Santa Fe, New Mexico 87504

Attn.: Mr. William J. LeMay -- Director

Gentlemen:

Chevron U.S.A. Inc. respectfully requests your approval of this administrative application for the subject Unorthodox Gas Well Location and Simultaneous Dedication.

Chevron is planning to drill and complete the **Arnott Ramsay (NCT-C) Well No. 17** in the Eumont Yates 7 Rvrs Qn (Pro Gas) Pool. It is also our desire to simultaneously dedicate the existing 640-acre Eumont Gas Proration Unit currently assigned to our Arnott Ramsay (NCT-C) Well Nos. 5, 13, 15 and 16 [Administrative Order NSL-3007-B(SD)] to all five wells. The 640-acre gas proration unit comprises all of Section 21, Township 21 South, Range 36 East, Lea County, New Mexico.

As a result, the proposed location for the Arnott Ramsay (NCT-C) Well No. 17 is unorthodox in that it is less than the required distance from the outer boundary of the proration unit. The location of Well No. 17 is 1830 feet FSL and 600 feet FWL, Unit Letter L, Section 21, Township 21 South, Range 36 East, Lea County, New Mexico.

In order to prevent waste, Chevron respectfully requests your approval of this administrative application for an unorthodox gas well location and simultaneous dedication. Attached is a

Eumont (Pro Gas) Pool
Section 21, T21S, R36E
Lea County, New Mexico

-2-

February 7, 1994

map showing offset operators and a Form C-102 plat. A copy of this letter and attachments are being furnished by Certified Mail to offset operators as their notice of this application.

If you have any questions or require any further information concerning this application, please contact me at (915) 687-7246.

Yours very truly,



A. W. Bohling
Petroleum Engineer

/tmdr
11939.DOC

Attachments

cc: NMOCD -- Hobbs, NM

CHEVRON U.S.A. INC.
Arnott Ramsay (NCT-C) Lease
Well No. 17

Unorthodox Location and
Simultaneous Dedication Application
Eumont (Pro Gas) Pool
1830' FSL and 600' FWL
Section 21, T-21-S, R-36-E
Lea County, New Mexico

OFFSET OPERATORS

Amoco Production Company
501 Westlake Park Blvd.
Houston, Texas 77079

Citation Oil and Gas Corporation
8223 Willow Place South, Ste. 250
Houston, Texas 77070

Conoco Incorporated
10 Desta Drive, Ste. 100W
Midland, Texas 79705

Doyle Hartman
P. O. Box 10426
Midland, Texas 79702

John Hendrix Corporation
223 W. Wall, Ste. 525
Midland, Texas 79701

Oxy U. S. A. Incorporated
P. O. Box 50250
Midland, Texas 79710

Texaco Exploration & Production, Inc.
P. O. Box 730
Hobbs, New Mexico 88240-0730

waiver

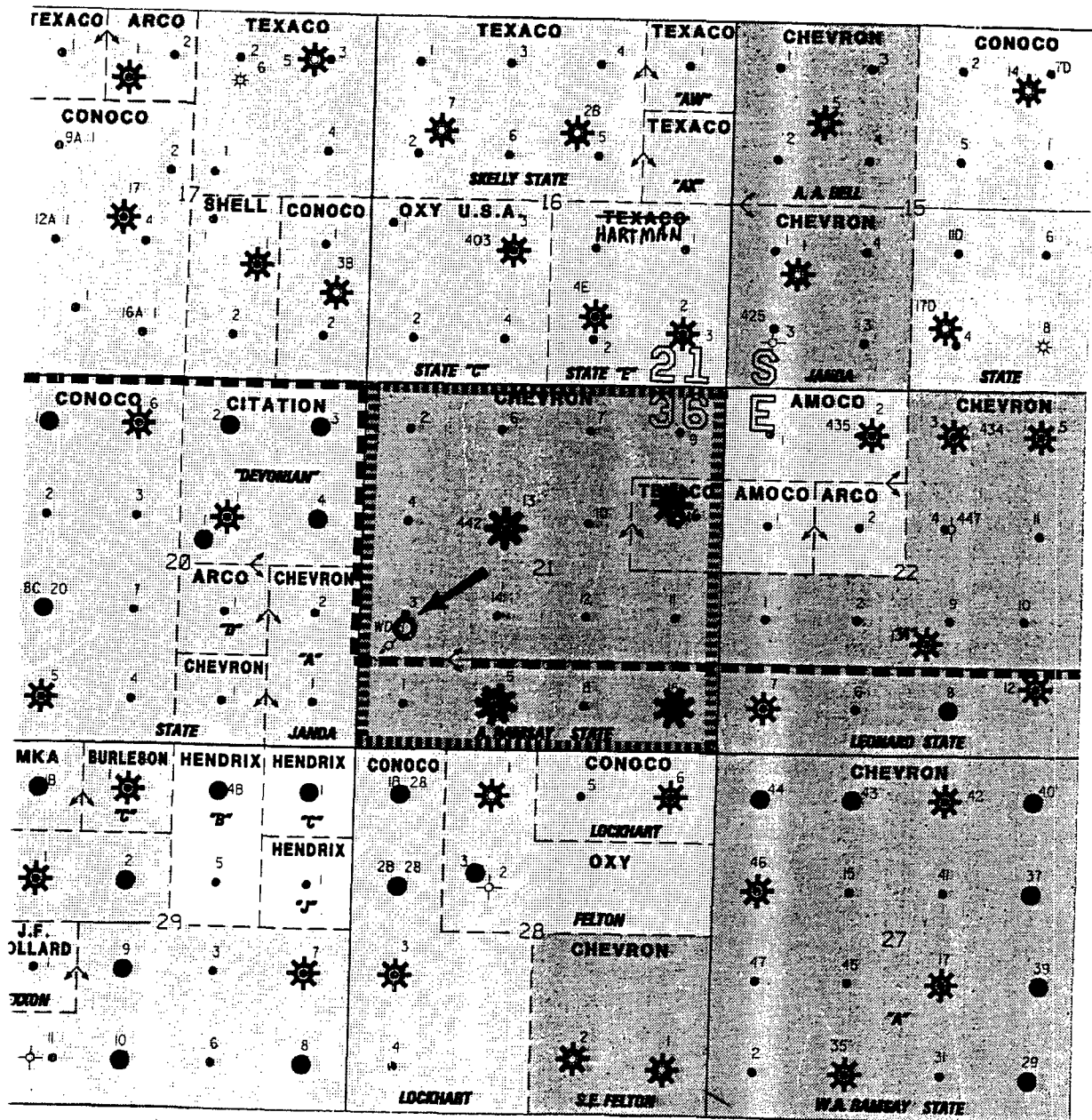
**Unorthodox Location and
Simultaneous Dedication Application
Eumont (Pro Gas) Pool
1830' FSL and 600' FWL
Section 21, T-21-S, R-36-E
Lea County, New Mexico**

[illegible]

CHEVRON U.S.A. INC.
Arnett Ramsay (NCT-C) Lease
Well No. 17

Unorthodox Location and
Simultaneous Dedication Application
Eumont (Pro Gas) Pool
1830' FSL and 600' FWL
Section 21, T-21-S, R-36-E
Lea County, New Mexico

PRORATION UNIT MAP



Submit to Appropriate
District Office
State Lease - 4 copies
Fee Lease - 3 copies

State of New Mexico
Energy, Minerals and Natural Resources Department

Form C-102
Revised 1-1-89

OIL CONSERVATION DIVISION

DISTRICT I
P.O. Box 1980, Hobbs, NM 88240

P.O. Box 2088
Santa Fe, New Mexico 87504-2088

DISTRICT II
P.O. Drawer DD, Arama, NM 88210

DISTRICT III
1000 Rio Brazos Rd., Aztec, NM 87410

WELL LOCATION AND ACREAGE DEDICATION PLAT

All Distances must be from the outer boundaries of the section

Operator CHEVRON U.S.A.			Lease ARNOTT RAMSAY (NCT-C)		Well No. 17
U.S. Letter L	Section 21	Township 21S	Range 36E	County NMEM	County LEA
Actual Footage Location of Well: 1830 feet from the SOUTH 600 feet from the WEST					
Ground level Elev.	Producing Formation YTS/7-RVRS/QN		Foot EUMONT (PRO GAS)		Dedicated Acreage 640 Acres

1. Outline the acreage dedicated to the subject well by colored pencil or hatchure marks on the plat below.

2. If more than one lease is dedicated to the well, outline each and identify the ownership thereof (both as to working interest and royalty).

3. If more than one lease of different ownership is dedicated to the well, have the interest of all owners been consolidated by communitization, unitization, force-pooling, etc.?

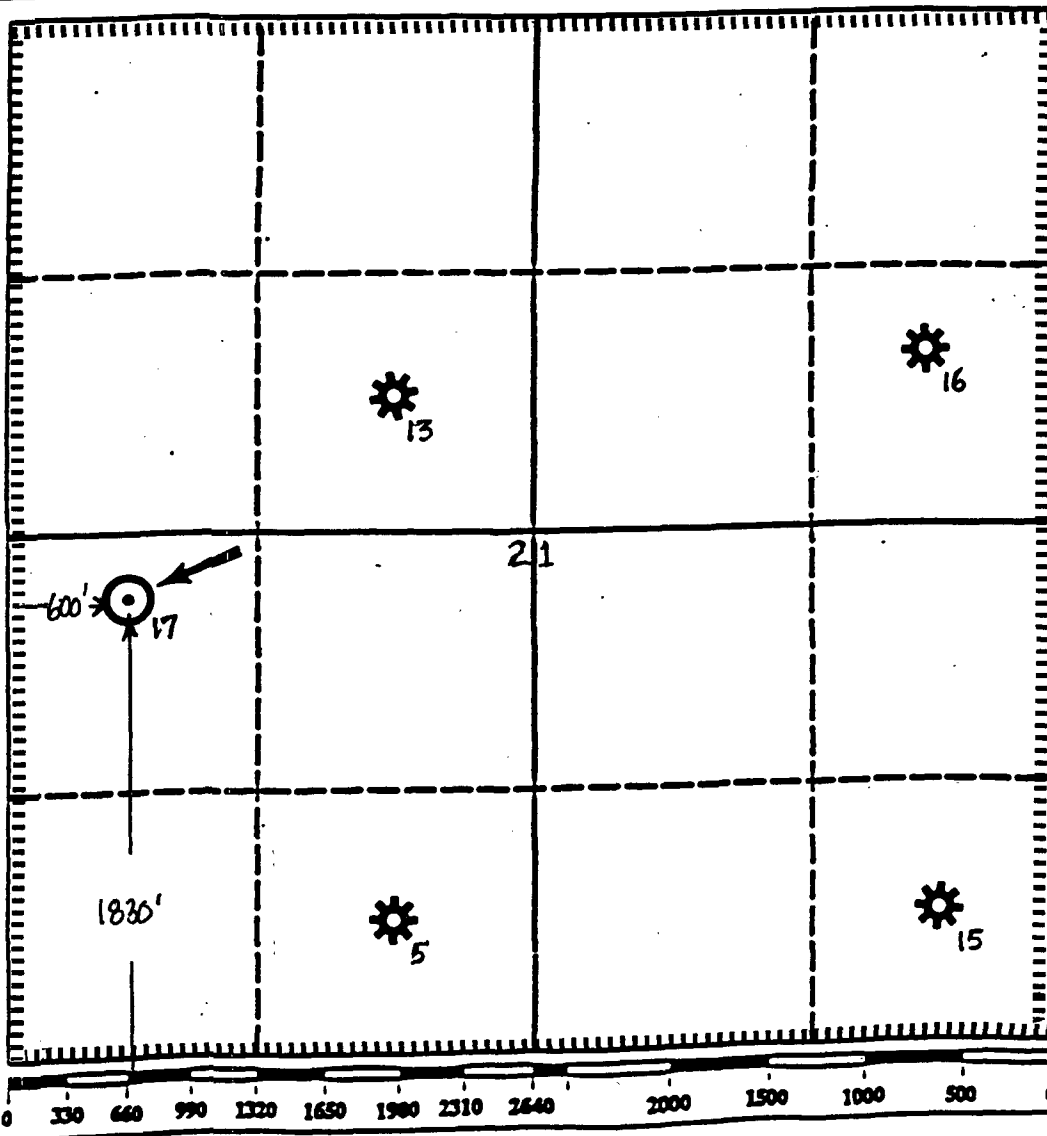
☐ Yes

☐ No

If answer is "yes" type of consolidation

If answer is "no" list the owners and tract descriptions which have actually been consolidated. (Use reverse side of this form if necessary.)

No allowable will be assigned to the well until all interests have been consolidated (by communitization, unitization, forced-pooling, or otherwise) or until a non-standard unit, eliminating such interest, has been approved by the Division.



OPERATOR CERTIFICATION

I hereby certify that the information contained herein is true and complete to the best of my knowledge and belief.

Signature

Alan W. Bohling

Printed Name

ALAN W. BOHLING

Position

PETROLEUM ENGINEER

Company

CHEVRON U.S.A.

Date

FEBRUARY 7, 1994

SURVEYOR CERTIFICATION

I hereby certify that the well location shown on this plat was plotted from field notes of actual surveys made by me or under my supervision, and that the same is true and correct to the best of my knowledge and belief.

Date Surveyed

Signature & Seal of
Professional Surveyor

Certificate No.

Submit to Appropriate
District Office
State Lease - 4 copies
Fee Lease - 3 copies

State of New Mexico
Energy, Minerals and Natural Resources Department

Form C-102
Revised 1-1-89

OIL CONSERVATION DIVISION

DISTRICT I
P.O. Box 1980, Hobbs, NM 88240

P.O. Box 2088

Santa Fe, New Mexico 87504-2088

DISTRICT II
P.O. Drawer DD, Aramis, NM 88210

DISTRICT III
1000 Rio Brazos Rd., Aztec, NM 87410

WELL LOCATION AND ACREAGE DEDICATION PLAT

All Distances must be from the outer boundaries of the section

Operator CHEVRON U.S.A.			Lease ARNOTT RAMSAY (NCT-C)		Well No. 5
Unit Letter N	Section 21	Township 21S	Range 36E	County NMPM LEA	
Actual Footage Location of Well: 660 feet from the SOUTH line and 1980 feet from the WEST line					
Ground level Elev.	Producing Formation YTS/7-RVRS/QN		Foot EUMONT (PRO GAS)	Dedicated Acreage 640 Acres	

1. Outline the acreage dedicated to the subject well by colored pencil or hatchure marks on the plat below.

2. If more than one lease is dedicated to the well, outline each and identify the ownership thereof (both as to working interest and royalty).

3. If more than one lease of different ownership is dedicated to the well, have the interest of all owners been consolidated by communitization, unitization, force-pooling, etc.?

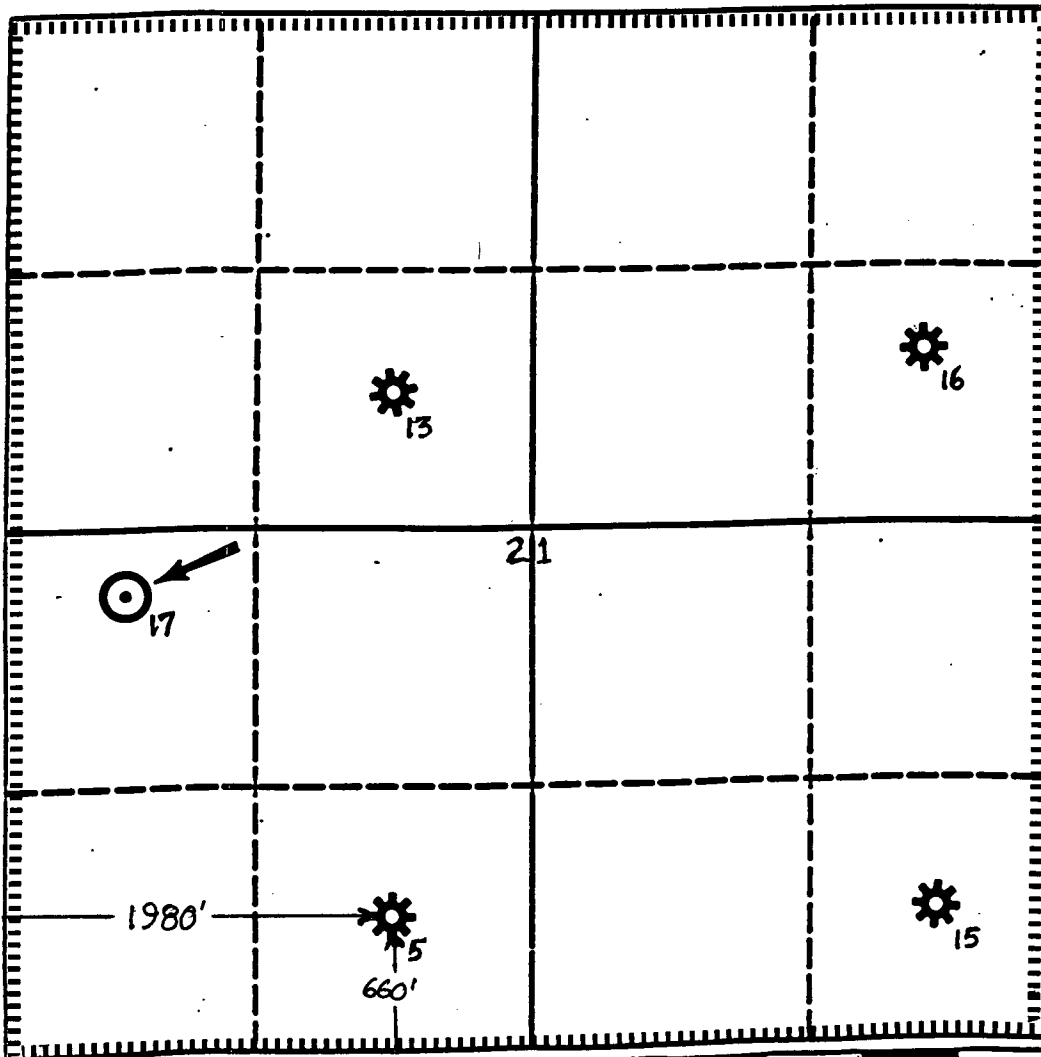
☐ Yes

☐ No

If answer is "yes" type of consolidation

If answer is "no" list the owners and tract descriptions which have actually been consolidated. (Use reverse side of this form if necessary.)

No allowable will be assigned to the well until all interests have been consolidated (by communitization, unitization, forced-pooling, or otherwise) or until a non-standard unit, eliminating such interest, has been approved by the Division.



OPERATOR CERTIFICATION

I hereby certify that the information contained herein is true and complete to the best of my knowledge and belief.

Signature

Alan W. Bohling

Printed Name

ALAN W. BOHLING

Position

PETROLEUM ENGINEER

Company

CHEVRON U.S.A.

Date

FEBRUARY 7, 1994

SURVEYOR CERTIFICATION

I hereby certify that the well location shown on this plat was plotted from field notes of actual surveys made by me or under my supervision, and that the same is true and correct to the best of my knowledge and belief.

Date Surveyed

Signature & Seal of
Professional Surveyor

Certificate No.

OIL CONSERVATION DIVISION

P.O. Box 2088
Santa Fe, New Mexico 87504-2088

DISTRICT I
P.O. Box 1980, Hobbs, NM 88240

DISTRICT II
P.O. Drawer DD, Aramis, NM 88210

DISTRICT III
1000 Rio Brazos Rd., Aztec, NM 87410

WELL LOCATION AND ACREAGE DEDICATION PLAT

All Distances must be from the outer boundaries of the section

Operator CHEVRON U.S.A.			Lease ARNOTT RAMSAY (NCT-C)		Well No. 13
Unit Letter F	Section 21	Township 21S	Range 36E	County NMPM LEA	

Actual Footage Location of Well:

1980 feet from the NORTH line and		1980 feet from the WEST line	
Ground level Elev.	Producing Formation YTS/7-RVRS/QN	Pool EUMONT (PRO GAS)	Dedicated Acreage 640 Acres

1. Outline the acreage dedicated to the subject well by colored pencil or hatchure marks on the plat below.

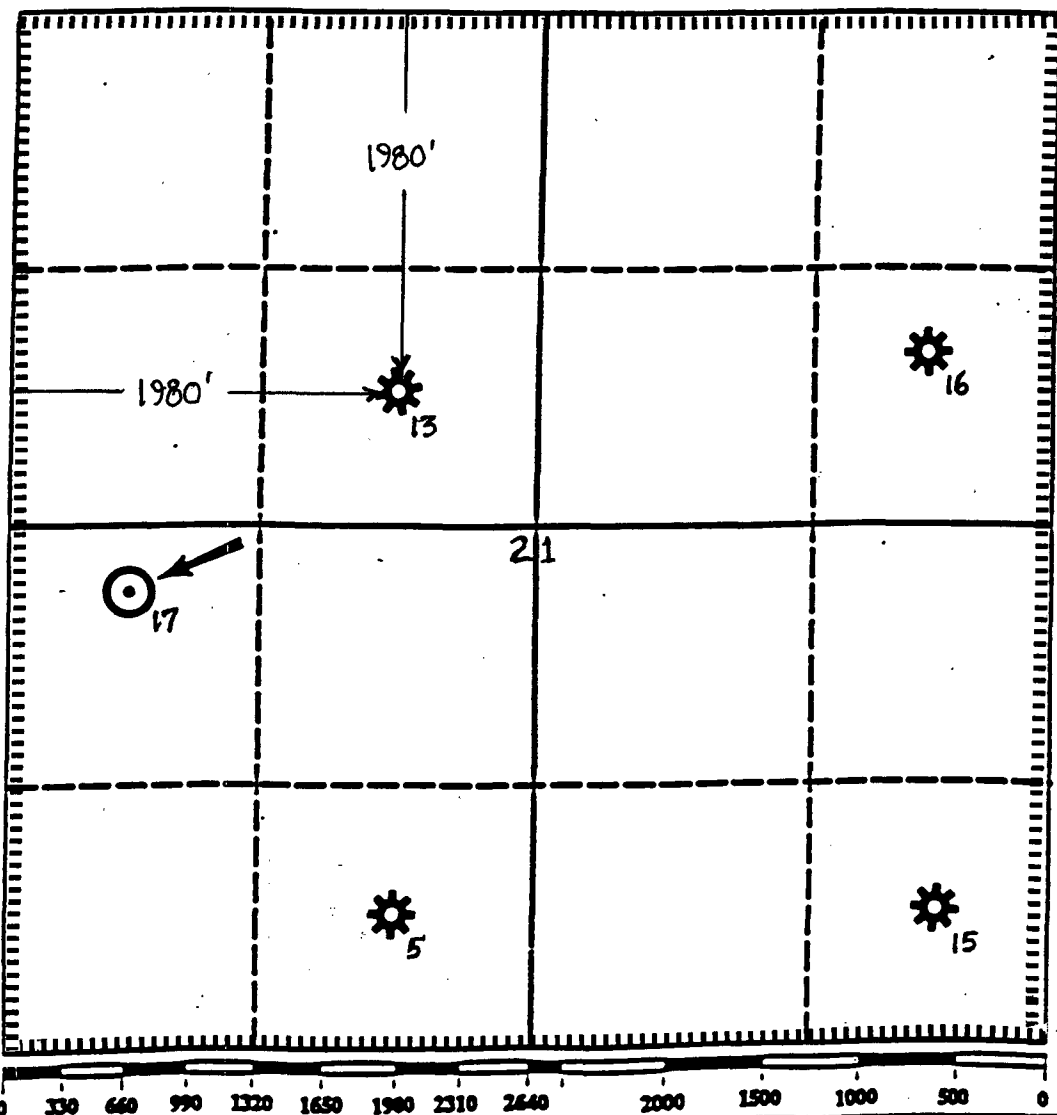
2. If more than one lease is dedicated to the well, outline each and identify the ownership thereof (both as to working interest and royalty).

3. If more than one lease of different ownership is dedicated to the well, have the interest of all owners been consolidated by communitization, unitization, force-pooling, etc.?

☐ Yes ☐ No If answer is "yes" type of consolidation

If answer is "no" list the owners and tract descriptions which have actually been consolidated. (Use reverse side of this form if necessary.)

No allowable will be assigned to the well until all interests have been consolidated (by communitization, unitization, forced-pooling, or otherwise) or until a non-standard unit, eliminating such interest, has been approved by the Division.



OPERATOR CERTIFICATION

I hereby certify that the information contained herein is true and complete to the best of my knowledge and belief.

Signature
Alan W. Bohling
Printed Name
ALAN W. BOHLING
Position
PETROLEUM ENGINEER
Company
CHEVRON U.S.A.
Date
FEBRUARY 7, 1994

SURVEYOR CERTIFICATION

I hereby certify that the well location shown on this plat was plotted from field notes of actual surveys made by me or under my supervision, and that the same is true and correct to the best of my knowledge and belief.

Date Surveyed
Signature & Seal of
Professional Surveyor

Certificate No.

Submit to Appropriate
District Office
State Lease - 4 copies
Fee Lease - 3 copies

State of New Mexico
Energy, Minerals and Natural Resources Department

Form C-102
Revised 1-1-89

OIL CONSERVATION DIVISION

P.O. Box 2088
Santa Fe, New Mexico 87504-2088

DISTRICT I
P.O. Box 1980, Hobbs, NM 88240

DISTRICT II
P.O. Drawer DD, Aramis, NM 88210

DISTRICT III
1000 Rio Brazos Rd., Aztec, NM 87410

WELL LOCATION AND ACREAGE DEDICATION PLAT

All Distances must be from the outer boundaries of the section

Operator CHEVRON U.S.A.			Lease ARNOTT RAMSAY (NCT-C)		Well No. 15
Unit Letter P	Section 21	Township 21S	Range 36E	County LEA	
Actual Footage Location of Well: 660 feet from the SOUTH line and 660 feet from the EAST line					
Ground level Elev.	Producing Formation YTS/7-RVRS/QN		Pool EUMONT (PRO GAS)		Dedicated Acreage 640 Acres

1. Outline the acreage dedicated to the subject well by colored pencil or hatchure marks on the plat below.

2. If more than one lease is dedicated to the well, outline each and identify the ownership thereof (both as to working interest and royalty).

3. If more than one lease of different ownership is dedicated to the well, have the interest of all owners been consolidated by communitization, unitization, force-pooling, etc.?

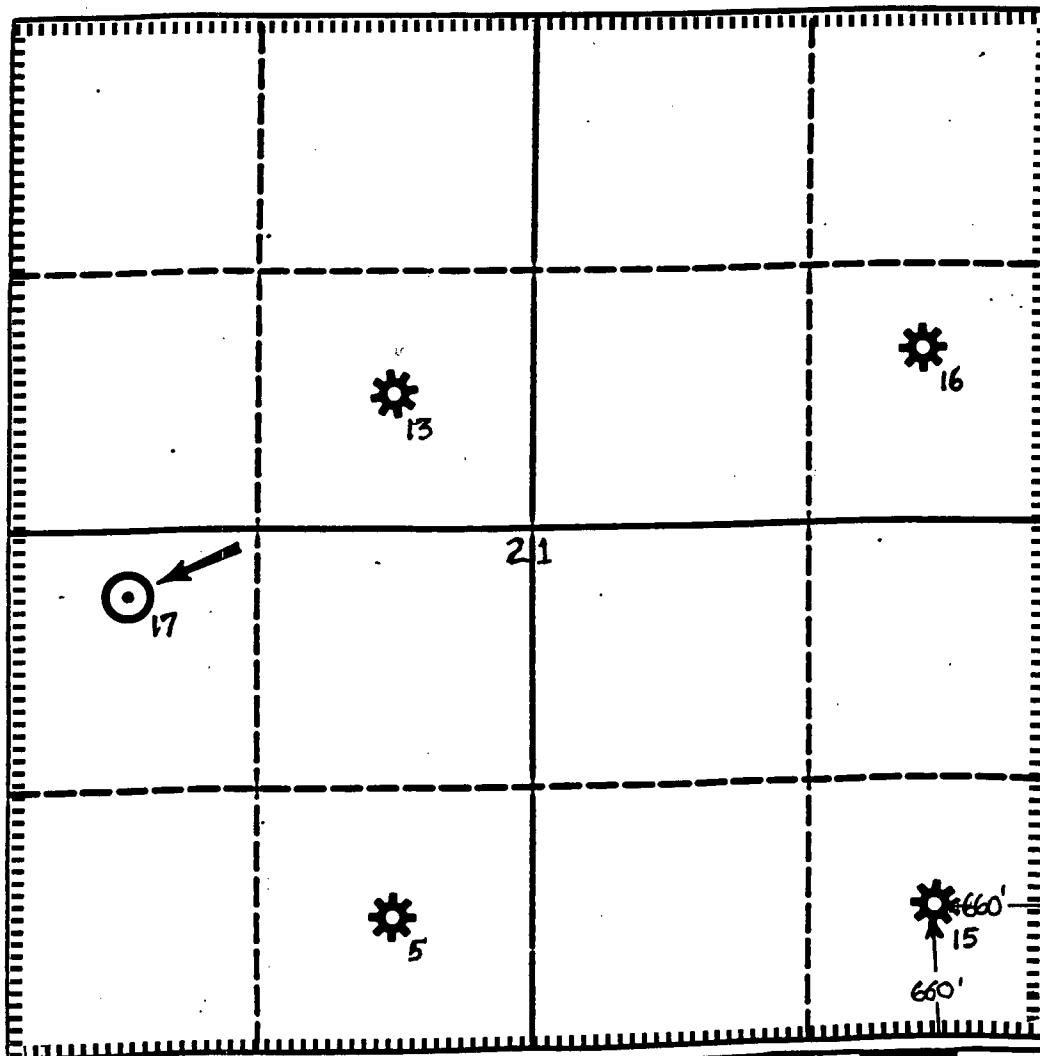
☐ Yes

☐ No

If answer is "yes" type of consolidation

If answer is "no" list the owners and tract descriptions which have actually been consolidated. (Use reverse side of this form if necessary.)

No allowable will be assigned to the well until all interests have been consolidated (by communitization, unitization, forced-pooling, or otherwise) or until a non-standard unit, eliminating such interest, has been approved by the Division.



OPERATOR CERTIFICATION

I hereby certify that the information contained herein is true and complete to the best of my knowledge and belief.

Signature

Alan W. Bohling

Printed Name

ALAN W. BOHLING

Position

PETROLEUM ENGINEER

Company

CHEVRON U.S.A.

Date

FEBRUARY 7, 1994

SURVEYOR CERTIFICATION

I hereby certify that the well location shown on this plat was plotted from field notes of actual surveys made by me or under my supervision, and that the same is true and correct to the best of my knowledge and belief.

Date Surveyed

Signature & Seal of
Professional Surveyor

Certificate No.

0 330 660 990 1320 1650 1980 2310 2640 2000 1500 1000 500 0

Submit to Appropriate
District Office
State Lease - 4 copies
Fee Lease - 3 copies

State of New Mexico
Energy, Minerals and Natural Resources Department

Form C-102
Revised 1-1-89

OIL CONSERVATION DIVISION

P.O. Box 2088
Santa Fe, New Mexico 87504-2088

DISTRICT I
P.O. Box 1980, Hobbs, NM 88240

DISTRICT II
P.O. Drawer DD, Aramis, NM 88210

DISTRICT III
1000 Rio Brazos Rd., Aztec, NM 87410

WELL LOCATION AND ACREAGE DEDICATION PLAT

All Distances must be from the outer boundaries of the section

Operator CHEVRON U.S.A.			Lease ARNOTT RAMSAY (NCT-C)		Well No. 16
Unit Letter H	Section 21	Township 21S	Range 36E	County NMPM LEA	

Actual Footage Location of Well:

1780 feet from the NORTH line and 680 feet from the EAST line			
Ground level Elev.	Producing Formation YTS/7-RVRS/QN	Pool EUMONT (PRO GAS)	Dedicated Acreage 640 Acres

1. Outline the acreage dedicated to the subject well by colored pencil or hatchure marks on the plat below.

2. If more than one lease is dedicated to the well, outline each and identify the ownership thereof (both as to working interest and royalty).

3. If more than one lease of different ownership is dedicated to the well, have the interest of all owners been consolidated by communitization, unitization, force-pooling, etc.?

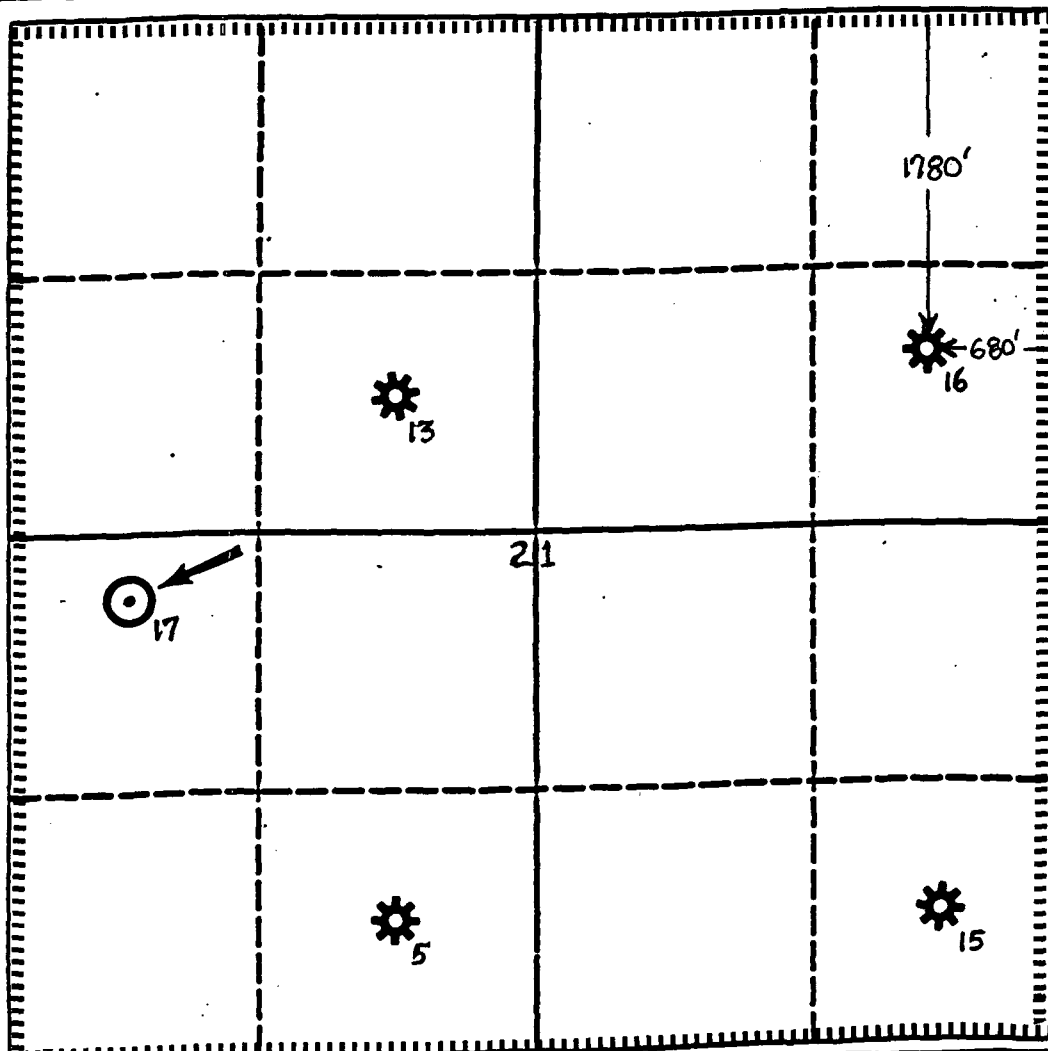
☐ Yes

☐ No

If answer is "yes" type of consolidation

If answer is "no" list the owners and tract descriptions which have actually been consolidated. (Use reverse side of this form if necessary.)

No allowable will be assigned to the well until all interests have been consolidated (by communitization, unitization, forced-pooling, or otherwise) or until a non-standard unit, eliminating such interest, has been approved by the Division.



OPERATOR CERTIFICATION

I hereby certify that the information contained herein is true and complete to the best of my knowledge and belief.

Signature

Alan W. Bohling

Printed Name

ALAN W. BOHLING

Position

PETROLEUM ENGINEER

Company

CHEVRON U.S.A.

Date

FEBRUARY 7, 1994

SURVEYOR CERTIFICATION

I hereby certify that the well location shown on this plat was plotted from field notes of actual surveys made by me or under my supervision, and that the same is true and correct to the best of my knowledge and belief.

Date Surveyed

Signature & Seal of Professional Surveyor

Certificate No.

**Chevron U.S.A. Production Company**

P.O. Box 1150, Midland, TX 79702

Midland, Texas

July 29, 1993

Notification of Change of
Unorthodox Well Location
Eumont YTS-7RVRS-QN
(Pro Gas) Pool
1780' FNL and 680' FEL
Section 21, T-21-S, R-36-E
Lea County, New Mexico

State of New Mexico
Energy, Minerals & Natural Resources Dept.
Oil Conservation Division
P.O. Box 2088
Santa Fe, New Mexico 87504

Dear Mr. Stogner:

On June 21, 1993, Chevron U.S.A. submitted an administrative application for NMOCD approval of an unorthodox well location in the Eumont YTS-7RVRS-QN (Pro Gas) Pool in Lea County, New Mexico. The subject well in the application, the Arnott Ramsay (NCT-C) #16, will be a newly drilled completion.

In the aforementioned administrative application, the proposed location for the new well was stated as 1780' FNL and 660' FEL, Section 21, T-21-S, R-36-E, Lea County, New Mexico. Because of surface obstructions, we have found it necessary to move the location of the proposed well to 1780' FNL and 680' FEL, Section 21, T-21-S, R-36-E. Attached is an amended C-102 plat illustrating the new well location. We respectfully request that the approval of the aforementioned application be amended to reflect the new well location.

Notification of offset operators was made upon the original submission of the administrative application. Per our telephone conversation on July 20, 1993, an amended notification of offset operators of the new location will not be made because the location of the well has been moved further away from the unit boundary than was originally stated.

If you have any questions, or if we can be of any other assistance, please do not hesitate to call us. Al Bohling will be able to assist you beginning Monday, August 2, and may be reached at (915) 687-7246. Before then, I will be available at (915) 687-7284.

Sincerely,

Richard E. Black
Petroleum Engineer
New Mexico Area

REB/

Attachments

JUL

93 THU

13:24

G3

P.02

Submit to Appropriate
District Office
State Lease - 4 copies
Fee Lease - 3 copies

State of New Mexico
Energy, Minerals and Natural Resources Department.

Form C-102
Revised 1-1-88

OIL CONSERVATION DIVISION

DISTRICT I
P.O. Box 1980, Hobbs, NM 88240

P.O. Box 2088
Santa Fe, New Mexico 87504-2088

DISTRICT II
P.O. Drawer DD, Artesia, NM 88210

DISTRICT III
1000 Rio Brazos Rd., Astor, NM 87410

WELL LOCATION AND ACREAGE DEDICATION PLAT

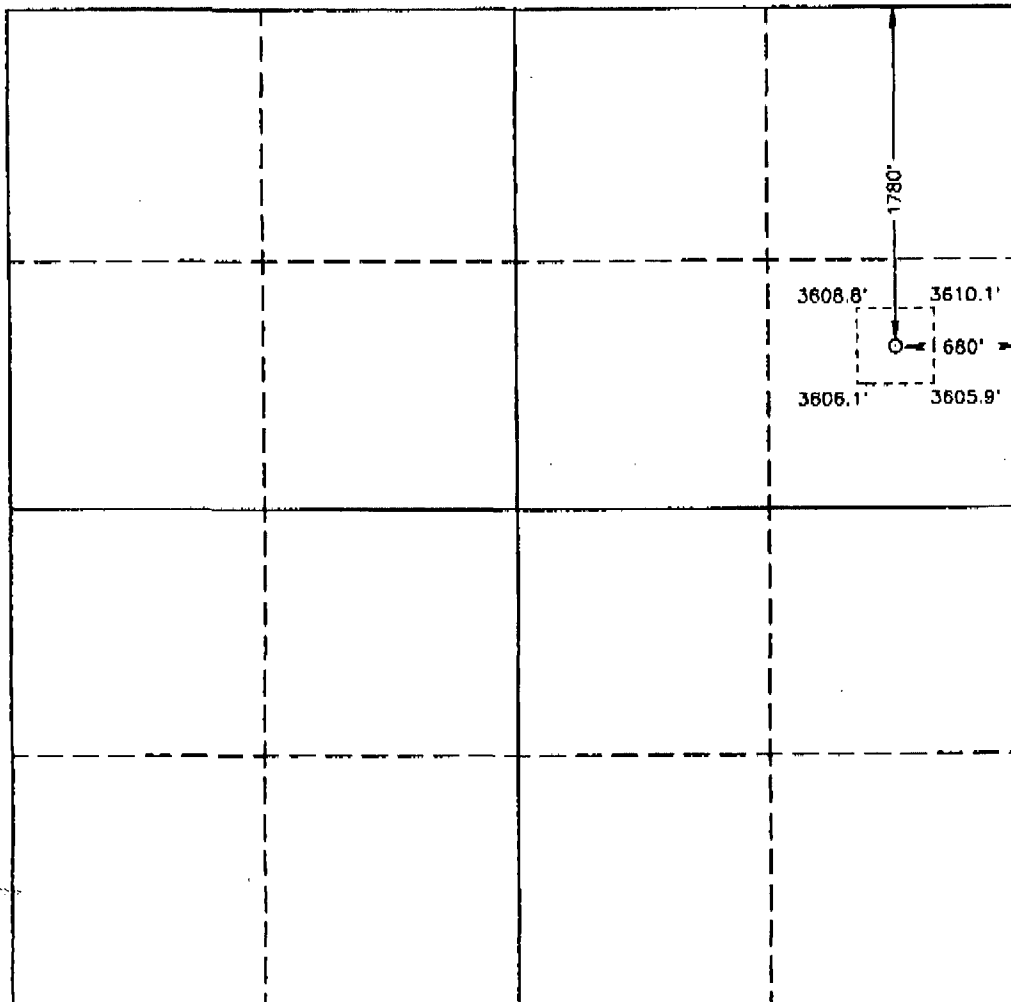
All Distances must be from the outer boundaries of the section

Operator CHEVRON U.S.A. INC.		Lease ARNOTT RAMSEY NCT C		Well No. 16
Unit Letter H	Section 21	Township 21 SOUTH	Range 36 EAST NMPM	County LEA
Actual Footage Location of Well:				
1780 feet from the NORTH line and 680 feet from the EAST line				
Ground Level Elev. 3806.3'	Producing Formation	Pool		Dedicated Acreage: Acres

1. Outline the acreage dedicated to the subject well by colored pencil or hatchure marks on the plat below.
2. If more than one lease is dedicated to the well, outline each and identify the ownership thereof (both as to working interest and royalty).
3. If more than one lease of different ownership is dedicated to the well, have the interest of all owners been consolidated by communitization, unitization, force-pooling, etc.?
- ☐ Yes ☐ No If answer is "yes" type of consolidation _____

If answer is "no" list of owners and tract descriptions which have actually been consolidated. (Use reverse side of this form necessary.)

No allowable will be assigned to the well unit all interests have been consolidated (by communitization, unitization, forced-pooling, otherwise) or until a non-standard unit, eliminating such interest, has been approved by the Division.



OPERATOR CERTIFICATION

I hereby certify the the information
contained herein is true and complete to the
best of my knowledge and belief.

Signature Richard C. Black

Printed Name
RICHARD E. BLAKE

Position
PETROLEUM ENGINEER

Company
CHEVRON U.S.A. Inc.

Date 7/29/93

SURVEYOR CERTIFICATION

I hereby certify that the well location shown on this plat was plotted from field notes of actual surveys made by me or under my supervision, and that the same is true and correct to the best of my knowledge and belief.

Date Surveyed
JULY 17, 1993

Signature & Seal of
Professional Engineer



Certified	JOHN W. WEST	678
	RONALD J. MOON	3239
	GARY J. BONES	7877

93-11-1369



February 7, 1994
Midland, Texas

Chevron U.S.A. Production Company
P.O. Box 1150
Midland, TX 79702

**Unorthodox Gas Well Location
and Simultaneous Dedication
Eumont Yates 7 Rvrs Qn
(Pro Gas) Pool
1830' FSL and 600' FWL
Section 21, T-21-S. R-36-E
Lea County, New Mexico**

**Amoco Production Company
501 Westlake Park Blvd.
Houston, Texas 77253**

Gentlemen:

Attached is a copy of Chevron's administrative application for NMOCD approval of an Unorthodox Gas Well Location and Simultaneous Dedication in the Eumont Yates 7 Rvrs Qn (Pro Gas) Pool.

Chevron plans to drill and complete the **Arnott Ramsay (NCT-C) Well No. 17** in the Eumont Yates 7 Rvrs Qn (Pro Gas) Pool. It is our desire to also simultaneously dedicate the existing 640-acre Eumont Gas Proration Unit assigned to our Arnott Ramsay (NCT-C) Well Nos. 5, 13, 15 and 16 [Administrative Order NSL-3007B(SD)] to all five wells. As a result, the location of the Arnott Ramsay (NCT-C) Well No. 17 becomes unorthodox. The location of Well No. 17 is 1830 feet FSL and 600 feet FWL of Section 21, T-21-S, R-36-E, NMPM, Lea County, New Mexico.

If you have any questions, please contact me at (915) 687-7246.

Yours very truly,

A handwritten signature in cursive script that reads "A. W. Bohling".

**A. W. Bohling
Petroleum Engineer**

/s/mdr
11950.DOC

Attachments



February 7, 1994
Midland, Texas

Chevron U.S.A. Production Company
P.O. Box 1150
Midland, TX 79702

**Unorthodox Gas Well Location
and Simultaneous Dedication
Eumont Yates 7 Rvrs Qn
(Pro Gas) Pool
1830' FSL and 600' FWL
Section 21, T-21-S. R-36-E
Lea County, New Mexico**

**Citation Oil and Gas Corporation
8223 Willow Place South, Ste. 250
Houston, Texas 77070**

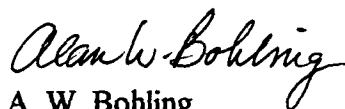
Gentlemen:

Attached is a copy of Chevron's administrative application for NMOCD approval of an Unorthodox Gas Well Location and Simultaneous Dedication in the Eumont Yates 7 Rvrs Qn (Pro Gas) Pool.

Chevron plans to drill and complete the **Arnott Ramsay (NCT-C) Well No. 17** in the Eumont Yates 7 Rvrs Qn (Pro Gas) Pool. It is our desire to also simultaneously dedicate the existing 640-acre Eumont Gas Proration Unit assigned to our Arnott Ramsay (NCT-C) Well Nos. 5, 13, 15 and 16 [Administrative Order NSL-3007B(SD)] to all five wells. As a result, the location of the Arnott Ramsay (NCT-C) Well No. 17 becomes unorthodox. The location of Well No. 17 is 1830 feet FSL and 600 feet FWL of Section 21, T-21-S, R-36-E, NMPM, Lea County, New Mexico.

If you have any questions, please contact me at (915) 687-7246.

Yours very truly,


A. W. Bohling
Petroleum Engineer

/tmdr
11949.DOC

Attachments



February 7, 1994
Midland, Texas

Chevron U.S.A. Production Company
P.O. Box 1150
Midland, TX 79702

Unorthodox Gas Well Location
and Simultaneous Dedication
Eumont Yates 7 Rvrs Qn
(Pro Gas) Pool
1830' FSL and 600' FWL
Section 21, T-21-S, R-36-E
Lea County, New Mexico

Conoco Incorporated
10 Desta Drive, Ste. 100W
Midland, Texas 79705

Gentlemen:

Attached is a copy of Chevron's administrative application for NMOCD approval of an Unorthodox Gas Well Location and Simultaneous Dedication in the Eumont Yates 7 Rvrs Qn (Pro Gas) Pool.

Chevron plans to drill and complete the **Arnott Ramsay (NCT-C) Well No. 17** in the Eumont Yates 7 Rvrs Qn (Pro Gas) Pool. It is our desire to also simultaneously dedicate the existing 640-acre Eumont Gas Proration Unit assigned to our Arnott Ramsay (NCT-C) Well Nos. 5, 13, 15 and 16 [Administrative Order NSL-3007B(SD)] to all five wells. As a result, the location of the Arnott Ramsay (NCT-C) Well No. 17 becomes unorthodox. The location of Well No. 17 is 1830 feet FSL and 600 feet FWL of Section 21, T-21-S, R-36-E, NMPM, Lea County, New Mexico.

If you have any questions, please contact me at (915) 687-7246.

Yours very truly,

A handwritten signature in cursive script that reads "Alan W. Bohling".

A. W. Bohling
Petroleum Engineer

/tmdr
11947.DOC

Attachments



February 7, 1994
Midland, Texas

Chevron U.S.A. Production Company
P.O. Box 1150
Midland, TX 79702

**Unorthodox Gas Well Location
and Simultaneous Dedication
Eumont Yates 7 Rvrs Qn
(Pro Gas) Pool
1830' FSL and 600' FWL
Section 21, T-21-S. R-36-E
Lea County, New Mexico**

**Doyle Hartman
P. O. Box 10426
Midland, Texas 79702**

Gentlemen:

Attached is a copy of Chevron's administrative application for NMOCD approval of an Unorthodox Gas Well Location and Simultaneous Dedication in the Eumont Yates 7 Rvrs Qn (Pro Gas) Pool.

Chevron plans to drill and complete the **Arnott Ramsay (NCT-C) Well No. 17** in the Eumont Yates 7 Rvrs Qn (Pro Gas) Pool. It is our desire to also simultaneously dedicate the existing 640-acre Eumont Gas Proration Unit assigned to our Arnott Ramsay (NCT-C) Well Nos. 5, 13, 15 and 16 [Administrative Order NSL-3007B(SD)] to all five wells. As a result, the location of the Arnott Ramsay (NCT-C) Well No. 17 becomes unorthodox. The location of Well No. 17 is 1830 feet FSL and 600 feet FWL of Section 21, T-21-S, R-36-E, NMPM, Lea County, New Mexico.

If you have any questions, please contact me at (915) 687-7246.

Yours very truly,

Alan W. Bohling
A. W. Bohling
Petroleum Engineer

/smdr
11946.DOC

Attachments



February 7, 1994
Midland, Texas

Chevron U.S.A. Production Company
P.O. Box 1150
Midland, TX 79702

Unorthodox Gas Well Location
and Simultaneous Dedication
Euont Yates 7 Rvrs Qn
(Pro Gas) Pool
1830' FSL and 600' FWL
Section 21, T-21-S. R-36-E
Lea County, New Mexico

John Hendrix Corporation
223 W. Wall, Ste. 525
Midland, Texas 79701

Gentlemen:

Attached is a copy of Chevron's administrative application for NMOCD approval of an Unorthodox Gas Well Location and Simultaneous Dedication in the Eumont Yates 7 Rvrs Qn (Pro Gas) Pool.

Chevron plans to drill and complete the **Arnott Ramsay (NCT-C) Well No. 17** in the Eumont Yates 7 Rvrs Qn (Pro Gas) Pool. It is our desire to also simultaneously dedicate the existing 640-acre Eumont Gas Proration Unit assigned to our Arnott Ramsay (NCT-C) Well Nos. 5, 13, 15 and 16 [Administrative Order NSL-3007B(SD)] to all five wells. As a result, the location of the Arnott Ramsay (NCT-C) Well No. 17 becomes unorthodox. The location of Well No. 17 is 1830 feet FSL and 600 feet FWL of Section 21, T-21-S, R-36-E, NMPM, Lea County, New Mexico.

If you have any questions, please contact me at (915) 687-7246.

Yours very truly,

A handwritten signature in cursive script that reads "A. W. Bohling".

A. W. Bohling
Petroleum Engineer

/tmdr
11945.DOC

Attachments



Chevron

February 7, 1994
Midland, Texas

Chevron U.S.A. Production Company
P.O. Box 1150
Midland, TX 79702

**Unorthodox Gas Well Location
and Simultaneous Dedication
Eumont Yates 7 Rvrs Qn
(Pro Gas) Pool
1830' FSL and 600' FWL
Section 21, T-21-S. R-36-E
Lea County, New Mexico**

**Oxy U. S. A. Incorporated
P. O. Box 50250
Midland, Texas 79710**

Gentlemen:

Attached is a copy of Chevron's administrative application for NMOCD approval of an Unorthodox Gas Well Location and Simultaneous Dedication in the Eumont Yates 7 Rvrs Qn (Pro Gas) Pool.

Chevron plans to drill and complete the **Arnott Ramsay (NCT-C) Well No. 17** in the Eumont Yates 7 Rvrs Qn (Pro Gas) Pool. It is our desire to also simultaneously dedicate the existing 640-acre Eumont Gas Proration Unit assigned to our Arnott Ramsay (NCT-C) Well Nos. 5, 13, 15 and 16 [Administrative Order NSL-3007B(SD)] to all five wells. As a result, the location of the Arnott Ramsay (NCT-C) Well No. 17 becomes unorthodox. The location of Well No. 17 is 1830 feet FSL and 600 feet FWL of Section 21, T-21-S, R-36-E, NMPM, Lea County, New Mexico.

If you have any questions, please contact me at (915) 687-7246.

Yours very truly,

Alana W. Bohling

**A. W. Bohling
Petroleum Engineer**

/tmr
11943.DOC

Attachments



February 7, 1994
Midland, Texas

Chevron U.S.A. Production Company
P.O. Box 1150
Midland, TX 79702

Unorthodox Gas Well Location
and Simultaneous Dedication
Eumont Yates 7 Rvrs Qn
(Pro Gas) Pool
1830' FSL and 600' FWL
Section 21, T-21-S. R-36-E
Lea County, New Mexico

Texaco Exploration & Production, Inc.
P. O. Box 730
Hobbs, New Mexico 88240-0730

Gentlemen:

Attached is a copy of Chevron's administrative application for NMOCD approval of an Unorthodox Gas Well Location and Simultaneous Dedication in the Eumont Yates 7 Rvrs Qn (Pro Gas) Pool.

Chevron plans to drill and complete the **Arnott Ramsay (NCT-C) Well No. 17** in the Eumont Yates 7 Rvrs Qn (Pro Gas) Pool. It is our desire to also simultaneously dedicate the existing 640-acre Eumont Gas Proration Unit assigned to our Arnott Ramsay (NCT-C) Well Nos. 5, 13, 15 and 16 [Administrative Order NSL-3007B(SD)] to all five wells. As a result, the location of the Arnott Ramsay (NCT-C) Well No. 17 becomes unorthodox. The location of Well No. 17 is 1830 feet FSL and 600 feet FWL of Section 21, T-21-S, R-36-E, NMPM, Lea County, New Mexico.

If you have any questions, please contact me at (915) 687-7246.

Yours very truly,

A handwritten signature in cursive script that reads "Alan W. Bohling".

A. W. Bohling
Petroleum Engineer

Admr
11941.DOC

Attachments

CMD :
OG6C102

ONGARD
C102-WELL LOCATION, DEDICATED ACREAGE PLAT

02/11/94 10:57:41
OGOMES -EMBA

API Well No : 30 25 4746 Well No : 013 Eff Date : 12-31-1974
Pool Idn : 76480 EUMONT YATES 7 RVRS QN (PRO GAS)
Prop Idn : 2568 ARNOTT RAMSAY NCT C
OGRID Idn : 4323 CHEVRON U S A INC
GL Elevation :

	U/L	Sec	Township	Range	North/South	East/West	Prop/Act(P/A)
	---	---	-----	-----	-----	-----	-----
B.H. Locn	: F	21	21S	36E	FTG	F	FTG
OCD U/L	: F						
Lot Identifier:			API County	:	25		

If more than 1 lease of different ownership is dedicated to the
well, have the interest of all owners been consolidated? (Y/N) :
Type of consolidation (Comm, Unit, Forced Pooling - C/U/F/O) :

PF01 HELP	PF02	PF03 EXIT	PF04 GoTo	PF05	PF06 CONFIRM
PF07	PF08	PF09 COMMENT	PF10 NEXT-WC	PF11 HISTORY	PF12 ACRE



STATE OF NEW MEXICO
ENERGY, MINERALS AND NATURAL RESOURCES DEPARTMENT

OIL CONSERVATION DIVISION
HOBBS DISTRICT OFFICE

OIL CONSERVATION DIVISION

RECEIVED

'94 FEB 25 AM 8 39

BRUCE KING
GOVERNOR

2-23-94

POST OFFICE BOX 1980
HOBBS, NEW MEXICO 88241-1980
(505) 393-6161

OIL CONSERVATION DIVISION
P. O. BOX 2088
SANTA FE, NEW MEXICO 87501

RE: Proposed:

MC	_____
DHC	_____
NSL	<u> X </u>
NSP	_____
SWD	_____
WFX	_____
PMX	_____

Gentlemen:

I have examined the application for the:

Chevron USA Inc Arnot Ramsey NCT-C #17-L 21-21-36
Operator Lease & Well No. Unit S-T-R

and my recommendations are as follows:

OK

Yours very truly,

Jerry Sexton
Jerry Sexton
Supervisor, District 1

/ed