

ABOVE THIS LINE FOR DIVISION USE ONLY

**NEW MEXICO OIL CONSERVATION DIVISION**  
 - Engineering Bureau -  
 1220 South St. Francis Drive, Santa Fe, NM 87505



*Chevron USA*  
*JKELLY #966*

**ADMINISTRATIVE APPLICATION CHECKLIST**

THIS CHECKLIST IS MANDATORY FOR ALL ADMINISTRATIVE APPLICATIONS FOR EXCEPTIONS TO DIVISION RULES AND REGULATIONS WHICH REQUIRE PROCESSING AT THE DIVISION LEVEL IN SANTA FE

**Application Acronyms:**

- [NSL-Non-Standard Location] [NSP-Non-Standard Proration Unit] [SD-Simultaneous Dedication]**
- [DHC-Downhole Commingling] [CTB-Lease Commingling] [PLC-Pool/Lease Commingling]**
- [PC-Pool Commingling] [OLS - Off-Lease Storage] [OLM-Off-Lease Measurement]**
- [WFX-Waterflood Expansion] [PMX-Pressure Maintenance Expansion]**
- [SWD-Salt Water Disposal] [IPI-Injection Pressure Increase]**
- [EOR-Qualified Enhanced Oil Recovery Certification] [PPR-Positive Production Response]**

- [1] **TYPE OF APPLICATION - Check Those Which Apply for [A]**
- [A] Location - Spacing Unit - Simultaneous Dedication  
 NSL  NSP  SD
- Check One Only for [B] or [C]
- [B] Commingling - Storage - Measurement  
 DHC  CTB  PLC  PC  OLS  OLM
- [C] Injection - Disposal - Pressure Increase - Enhanced Oil Recovery  
 WFX  PMX  SWD  IPI  EOR  PPR
- [D] Other: Specify \_\_\_\_\_

**RECEIVED**  
 2007 OCT 22 AM 11 28

- [2] **NOTIFICATION REQUIRED TO: - Check Those Which Apply, or  Does Not Apply**
- [A]  Working, Royalty or Overriding Royalty Interest Owners
- [B]  Offset Operators, Leaseholders or Surface Owner
- [C]  Application is One Which Requires Published Legal Notice
- [D]  Notification and/or Concurrent Approval by BLM or SLO  
U.S. Bureau of Land Management - Commissioner of Public Lands, State Land Office
- [E]  For all of the above, Proof of Notification or Publication is Attached, and/or,
- [F]  Waivers are Attached

[3] **SUBMIT ACCURATE AND COMPLETE INFORMATION REQUIRED TO PROCESS THE TYPE OF APPLICATION INDICATED ABOVE.**

[4] **CERTIFICATION:** I hereby certify that the information submitted with this application for administrative approval is **accurate** and **complete** to the best of my knowledge. I also understand that **no action** will be taken on this application until the required information and notifications are submitted to the Division.

**Note: Statement must be completed by an individual with managerial and/or supervisory capacity.**

PHYLLIS A. EDWARDS	<i>Phyllis Edwards</i>	REGULATORY ANALYST	<u>10/19/07</u>
Print or Type Name	Signature	Title Agent for Chevron USA Inc.	Date
		pedwards@conchoresources.com	
		e-mail Address	

**Skelly Unit #966  
Eddy County, NM**

NW/4 SW/4

Fren; Glorieta Yeso oil well  
TD of approximately 6500'  
Non-standard location  
1500' FSL & 1310' FWL Sec 15, T17S, R31E, Unit L

The plan for this well is to complete it in the Yeso formation.  
We won't know the exact perms until we drill & log it, but it will be similar to the

Willow State #8  
330 FSL & 1650 FEL, Section 16, T17S, R31E, UL O  
drilled in Malrch 2006

The Willow State #8 Yeso completion has overall perforations from 5380.5' – 5845.5', but is divided into 2 perf/stimulation intervals. At this time, we assume the Skelly Unit 966 will be very similar.

1<sup>st</sup> Interval: 5650' – 5845.5', 67 total holes.  
acidized w/ 2265 gals acid,  
frac'd w/ 8000# LiteProp, 30,000 gals 30# gel, 54,663 gals 40# gel, & 90,560#  
16/30 sand

2<sup>nd</sup> Interval: 5380.5' – 5544', 56 total holes.  
acidized w/ 2550 gals acid,  
frac'd w/ 8006# LiteProp, 30,000 gals 30# gel, 53,000 gals 40# gel, & 91,740#  
16/30 sand

**Attachment 1**  
Permit, Plat and map

**Attachment 2**  
Map and legend of offset wells.

**Attachment 3**  
Updated land plat showing that Chevron USA Inc. owns offset acreage.  
The acreage we are encroaching on is the NE/4 SW/4 of Section 15.  
Chevron USA Inc. owns all of Section 15. Interests are common.

COG Operating LLC as agent for Chevron USA Inc. respectfully requests  
permission to have this NSL approved.

Form 3160-3  
(April 2004)

UNITED STATES  
DEPARTMENT OF THE INTERIOR  
BUREAU OF LAND MANAGEMENT

FORM APPROVED  
OMB No. 1004-0137  
Expires March 31, 2007

APPLICATION FOR PERMIT TO DRILL OR REENTER

5a. Type of work: <input checked="" type="checkbox"/> DRILL <input type="checkbox"/> REENTER		5. Lease Serial No. <b>NMLC - 029420 (a)</b>
1b. Type of Well: <input checked="" type="checkbox"/> Oil Well <input type="checkbox"/> Gas Well <input type="checkbox"/> Other <input type="checkbox"/> Single Zone <input type="checkbox"/> Multiple Zone		6. If Indian, Allottee or Tribe Name
2. Name of Operator <b>Chevron USA Inc. (COG Operating LLC agent)</b>		7. If Unit or CA Agreement, Name and No.
3a. Address <b>550 W. Texas Ave., Suite 1300 Midland, TX 79701</b>	3b. Phone No. (include area code) <b>432-685-4340</b>	8. Lease Name and Well No. <b>SKELLY UNIT #966</b>
4. Location of Well (Report location clearly and in accordance with any State requirements) At surface <b>1500 FSL &amp; 1310 FWL, Unit L</b> At proposed prod. zone <b>Roswell Controlled Water Basin</b>		9. API Well No.
14. Distance in miles and direction from nearest town or post office* <b>9 miles East of Loco Hills, NM</b>		10. Field and Pool, or Exploratory <b>Fren; Glorieta Yeso</b>
15. Distance from proposed* location to nearest property or lease line, ft. (Also to nearest drig. unit line, if any) <b>10'</b>	16. No. of acres in lease <b>640</b>	11. Sec., T. R. M. or Blk. and Survey or Area <b>Sec 15 T17S R31E</b>
18. Distance from proposed location* to nearest well, drilling, completed, applied for, on this lease, ft. <b>500'</b>	17. Spacing Unit dedicated to this well <b>40</b>	12. County or Parish <b>EDDY</b>
21. Elevations (Show whether DF, KDB, RT, GL, etc.) <b>3858' GR</b>	19. Proposed Depth <b>6500</b>	13. State <b>NM</b>
22. Approximate date work will start* <b>12/01/2007</b>		20. BLM/BIA Bond No. on file <b>CA-0329</b>
23. Estimated duration <b>15 days</b>		

24. Attachments

The following, completed in accordance with the requirements of Onshore Oil and Gas Order No. 1, shall be attached to this form:

- 1. Well plat certified by a registered surveyor.
- 2. A Drilling Plan.
- 3. A Surface Use Plan (if the location is on National Forest System Lands, the SUPO shall be filed with the appropriate Forest Service Office).
- 4. Bond to cover the operations unless covered by an existing bond on file (see Item 20 above).
- 5. Operator certification
- 6. Such other site specific information and/or plans as may be required by the authorized officer.

25. Signature <i>Phyllis Edwards</i>	Name (Printed/Typed) <b>Phyllis Edwards</b>	Date <b>9/7/07</b>
Title <b>Regulatory Analyst</b>		

Approved by (Signature) <i>J.D. Whitlock Jr</i>	Name (Printed/Typed) <b>J.S./ JD Whitlock Jr</b>	Date <b>10/11/2007</b>
Title <b>FIELD MANAGER</b>	Office <b>CARLSBAD FIELD OFFICE</b>	

Application approval does not warrant or certify that the applicant holds legal or equitable title to those rights in the subject lease which would entitle the applicant to conduct operations thereon.  
Conditions of approval, if any, are attached.

**APPROVAL FOR TWO YEARS**

Title 18 U.S.C. Section 1001 and Title 43 U.S.C. Section 1212, make it a crime for any person knowingly and willfully to make to any department or agency of the United States any false, fictitious or fraudulent statements or representations as to any matter within its jurisdiction.

\*(Instructions on page 2)

SEE ATTACHED FOR  
CONDITIONS OF APPROVAL

APPROVAL SUBJECT TO  
GENERAL REQUIREMENTS  
AND SPECIAL STIPULATIONS  
ATTACHED

AUG 08 2007

ACT I  
N. FRENCH DR., HOBBS, NM 88240

DISTRICT II  
1301 W. GRAND AVENUE, ARTESIA, NM 88210

DISTRICT III  
1000 Rio Brazos Rd., Aztec, NM 87410

DISTRICT IV  
1220 S. ST. FRANCIS DR., SANTA FE, NM 87505

OIL CONSERVATION DIVISION  
1220 SOUTH ST. FRANCIS DR.  
Santa Fe, New Mexico 87505

WELL LOCATION AND ACREAGE DEDICATION PLAT

AMENDED REPORT

API Number	Pool Code 26770	Pool Name FREN; GLORIETA-YESO
Property Code 29742	Property Name SKELLY UNIT	Well Number 966
OGRID No. 4323	Operator Name CHEVRON U.S.A INC.	Elevation 3858'

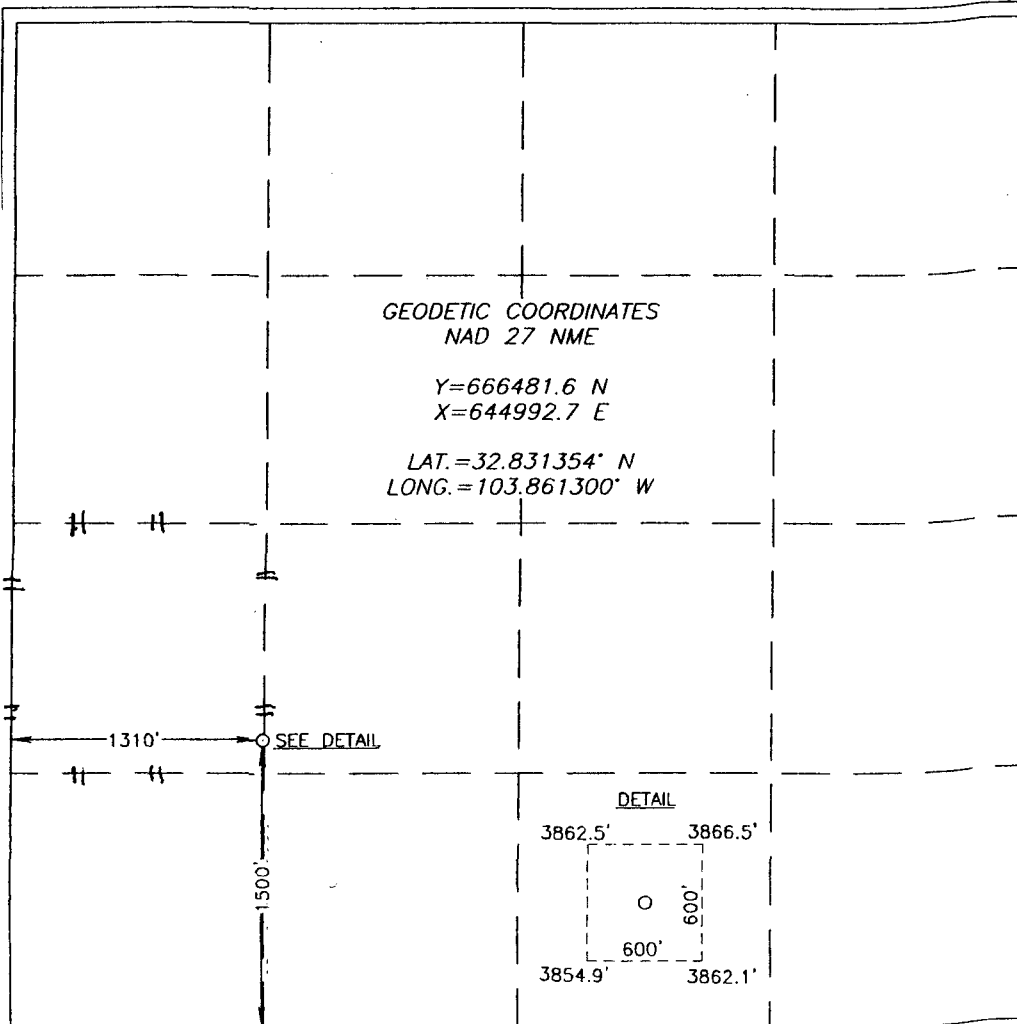
Surface Location

UL or lot No.	Section	Township	Range	Lot Idn	Feet from the	North/South line	Feet from the	East/West line	County
L	15	17-S	31-E		1500	SOUTH	1310	WEST	EDDY

Bottom Hole Location If Different From Surface

UL or lot No.	Section	Township	Range	Lot Idn	Feet from the	North/South line	Feet from the	East/West line	County
Dedicated Acres 40	Joint or Infill	Consolidation Code	Order No.						

NO ALLOWABLE WILL BE ASSIGNED TO THIS COMPLETION UNTIL ALL INTERESTS HAVE BEEN CONSOLIDATED OR A NON-STANDARD UNIT HAS BEEN APPROVED BY THE DIVISION



**OPERATOR CERTIFICATION**

I hereby certify that the information herein is true and complete to the best of my knowledge and belief, and that this organization either owns a working interest or unleased mineral interest in the land including the proposed bottom hole location or has a right to drill this well at this location pursuant to a contract with an owner of such mineral or working interest, or to a voluntary pooling agreement or a compulsory pooling order heretofore entered by the division.

*Phyllis A. Edwards* 9/7/07  
Signature Date

PHYLLIS A. EDWARDS  
Printed Name REGULATORY ANALYST

---

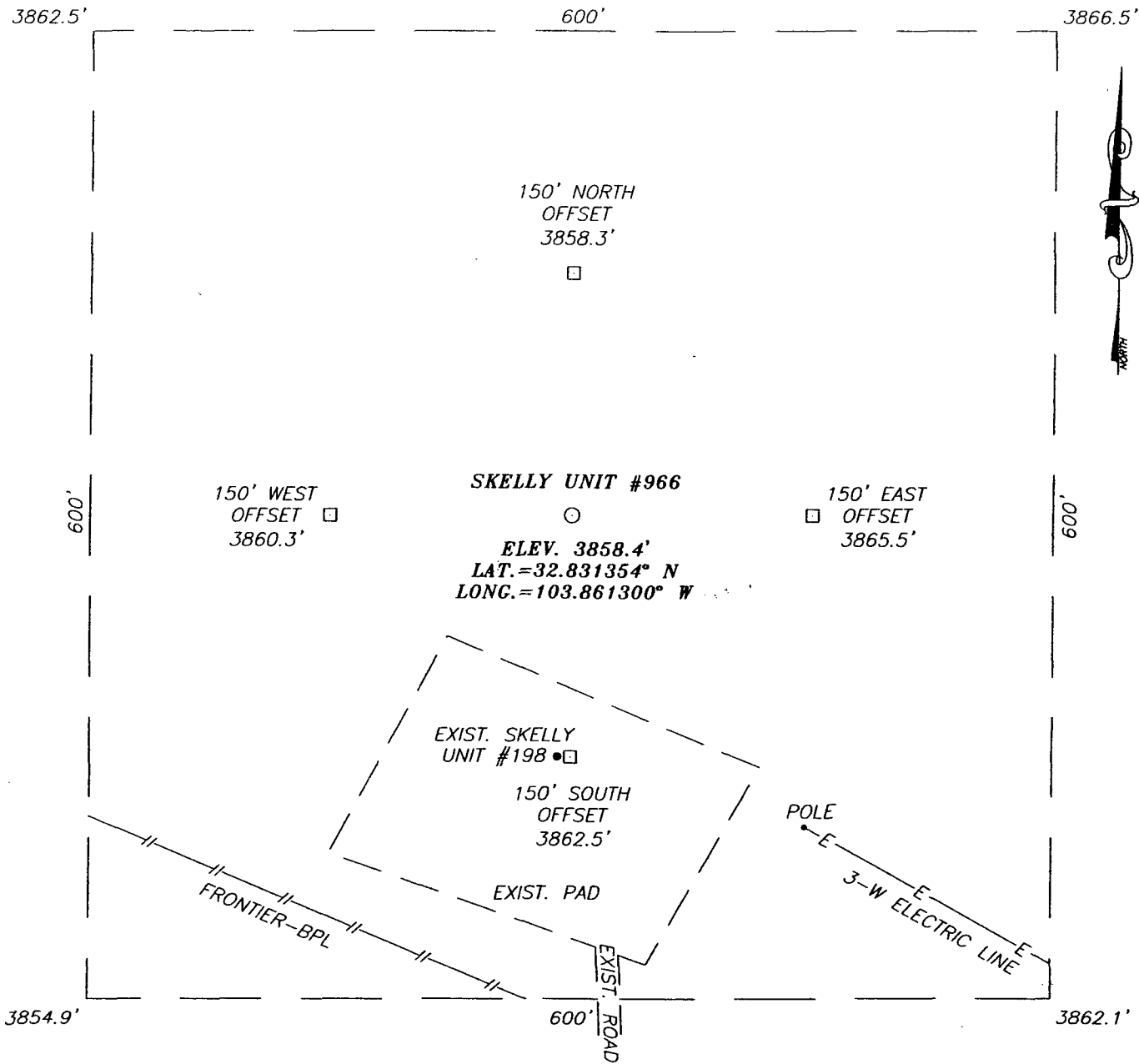
**SURVEYOR CERTIFICATION**

I hereby certify that the well location shown on this plat was plotted from field notes of actual surveys made by me or under my supervision, and that the same is true and correct to the best of my belief.

Date Surveyed 5/7/07 AR  
Signature of Professional Surveyor  
Professional Surveyor No. 3239  
*Ronald J. Eidson* 8/06/07  
Professional Surveyor

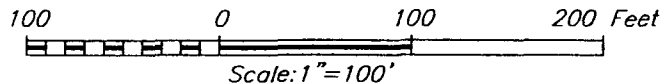
Certificate No. RONALD J. EIDSON 12841  
RONALD J. EIDSON 3239

**SECTION 15, TOWNSHIP 17 SOUTH, RANGE 31 EAST, N.M.P.M.,**  
 EDDY COUNTY, NEW MEXICO



**DIRECTIONS TO LOCATION**

FROM THE INTERSECTION OF U.S. HWY. #82 AND CO. RD. #223 (SWEET GUM RD.), GO NORTHWEST ON CO. RD. #223 APPROX. 0.85 MILES. TURN RIGHT AND GO EAST 0.45 MILES. TURN LEFT AND GO NORTHEAST APPROX. 0.45 MILES. VEER LEFT AND GO NORTH APPROX. 0.2 MILES TO THE EXISTING SKELLY UNIT #198 WELL. THIS LOCATION IS APPROX. 150 FEET TO THE NORTH.



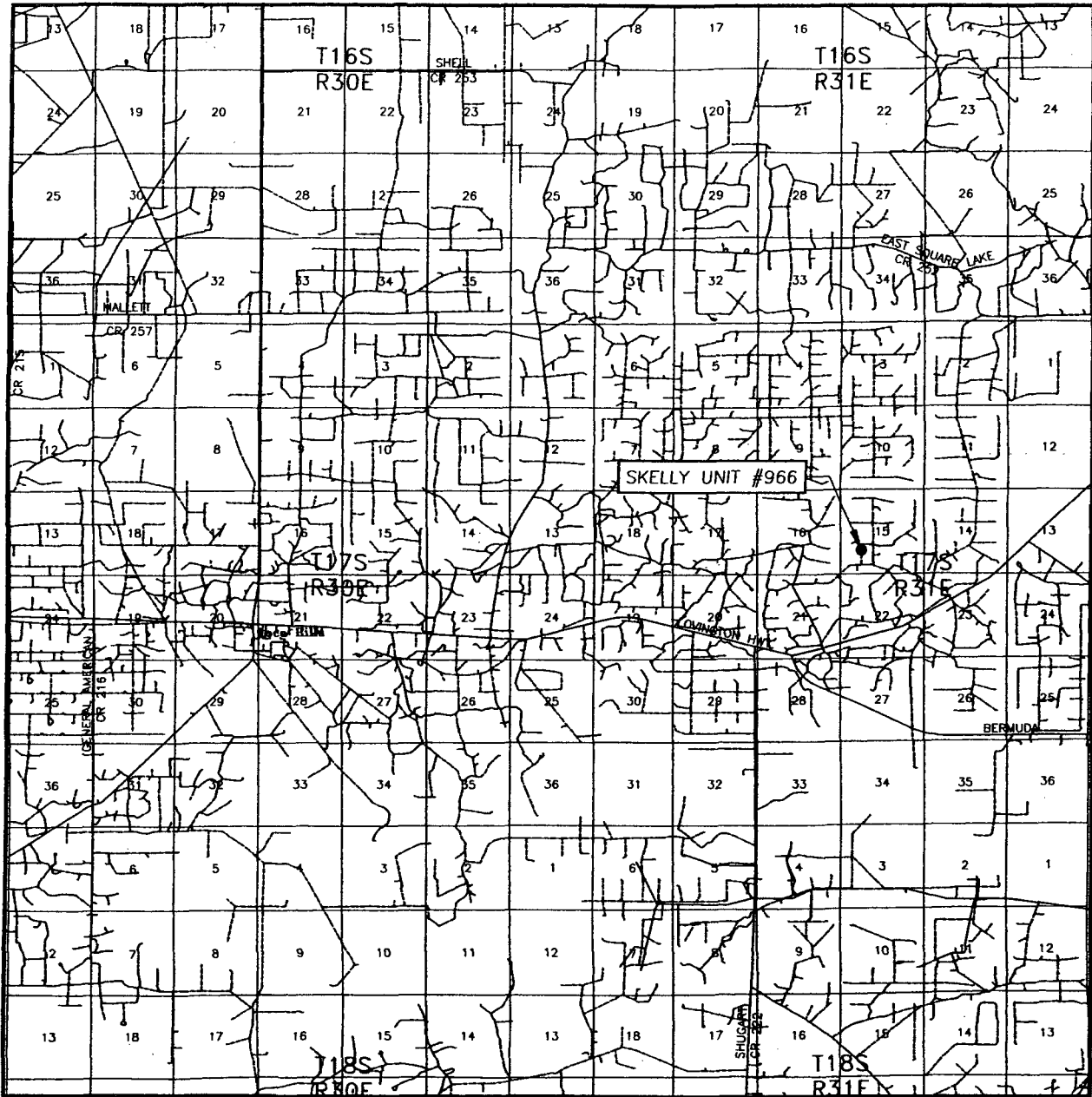
**CHEVRON U.S.A INC.**

SKELLY UNIT #966 WELL  
 LOCATED 1500 FEET FROM THE SOUTH LINE  
 AND 1310 FEET FROM THE WEST LINE OF SECTION 15,  
 TOWNSHIP 17 SOUTH, RANGE 31 EAST, N.M.P.M.,  
 EDDY COUNTY, NEW MEXICO.

Survey Date: 7/27/07	Sheet 1 of 1 Sheets		
W.O. Number: 07.11.0944	Dr By: AR	Rev 1:N/A	
Date: 8/2/07	Disk:	07110944	Scale: 1"=100'

PROVIDING SURVEYING SERVICES  
 SINCE 1946  
**JOHN WEST SURVEYING COMPANY**  
 412 N. DAL PASO  
 HOBBS, N.M. 88240  
 (505) 393-3117

# VICINITY MAP



SCALE: 1" = 2 MILES

SEC. 15 TWP. 17-S RGE. 31-E

SURVEY N.M.P.M.


COUNTY EDDY STATE NEW MEXICO

DESCRIPTION 1500' FSL & 1310' FWL

ELEVATION 3858'

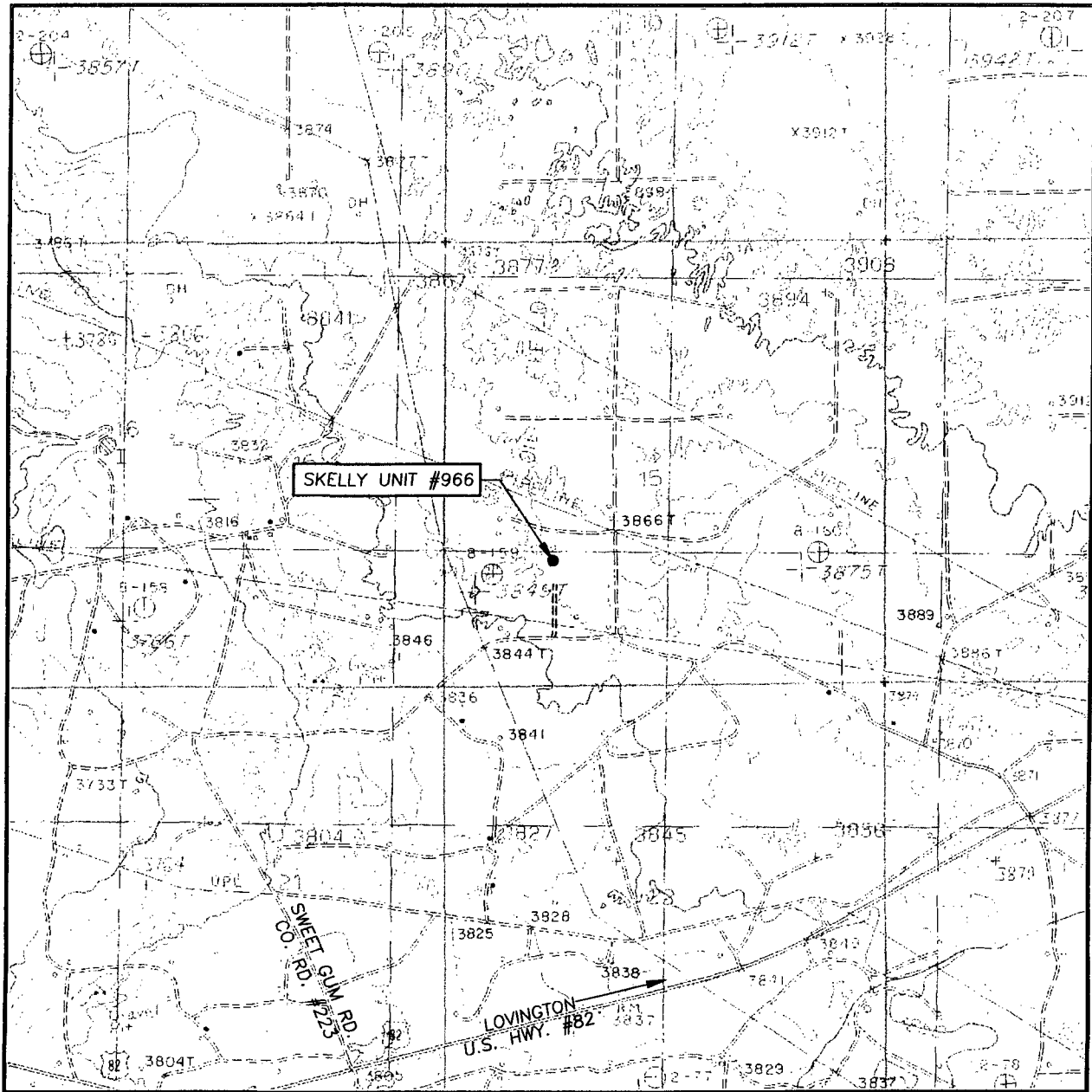
OPERATOR CHEVRON U.S.A INC.

LEASE SKELLY UNIT



PROVIDING SURVEYING SERVICES  
 SINCE 1946  
**JOHN WEST SURVEYING COMPANY**  
 412 N. DAL PASO  
 HOBBS, N.M. 88240  
 (505) 393-3117

# LOCATION VERIFICATION MAP



SCALE: 1" = 2000'

CONTOUR INTERVAL:  
MALJAMAR, N.M. - 10'

SEC. 15 TWP. 17-S RGE. 31-E

SURVEY N.M.P.M.

COUNTY EDDY STATE NEW MEXICO


DESCRIPTION 1500' FSL & 1310' FWL

ELEVATION 3858'

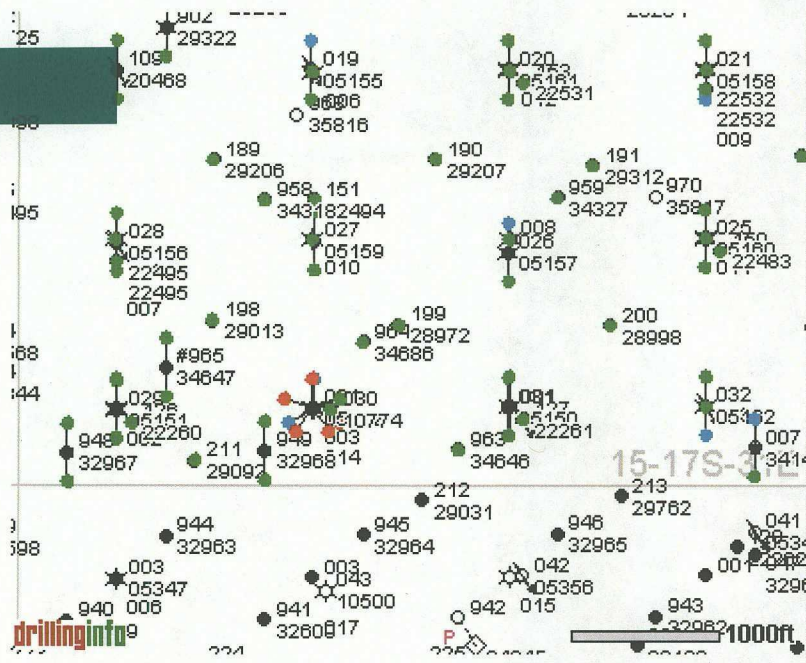
OPERATOR CHEVRON U.S.A INC.

LEASE SKELLY UNIT

U.S.G.S. TOPOGRAPHIC MAP  
MALJAMAR, N.M.



**PROVIDING SURVEYING SERVICES**  
**SINCE 1946**  
**JOHN WEST SURVEYING COMPANY**  
 412 N. DAL PASO  
 HOBBS, N.M. 88240  
 (505) 393-3117





## Skelly Unit 967 - Offset Wells

API#	Operator	Lease	Well#	County	Legal	Field Name	Reservoir Name	Total Well Depth	Well Status
30-015-05150	WISER OIL CO (THE)	SKELLY UNIT	031	EDDY	S:15, T:17S, R:31E	GRAYBURG JACKSON	SR-Q-G-SA	0	Shut-in
30-015-05150	WISER OIL CO (THE)	SKELLY UNIT	031	EDDY	S:15, T:17S, R:31E	GRAYBURG JKSN SR-Q-G-SA(DO NOT USE)		0	Shut-in
30-015-05151	FOREST OIL CORP	SKELLY UNIT	029	EDDY	S:15, T:17S, R:31E	GRAYBURG JACKSON	SR-Q-G-SA	0	Active
30-015-05151	WISER OIL CO (THE)	SKELLY UNIT	029	EDDY	S:15, T:17S, R:31E	GRAYBURG JKSN SR-Q-G-SA(DO NOT USE)		0	Active
30-015-05152	WISER OIL CO (THE)	SKELLY UNIT	001	EDDY	S:15, T:17S, R:31E	GRAYBURG JKSN SR-Q-G-SA(DO NOT USE)		0	Active
30-015-05152	FOREST OIL CORP	SKELLY UNIT	001	EDDY	S:15, T:17S, R:31E	GRAYBURG JACKSON	SR-Q-G-SA	0	Active
30-015-05152	WISER OIL CO (THE)	SKELLY UNIT	001	EDDY	S:15, T:17S, R:31E	FREN	PENN (GAS)	0	Active
30-015-05153	FOREST OIL CORP	SKELLY UNIT	017	EDDY	S:15, T:17S, R:31E	GRAYBURG JACKSON	SR-Q-G-SA	0	Injection Well
30-015-05153	WISER OIL CO (THE)	SKELLY UNIT	017	EDDY	S:15, T:17S, R:31E	GRAYBURG JKSN SR-Q-G-SA(DO NOT USE)		0	Injection Well
30-015-05154	WISER OIL CO (THE)	SKELLY UNIT	018	EDDY	S:15, T:17S, R:31E	GRAYBURG JKSN SR-Q-G-SA(DO NOT USE)		0	Active
30-015-05154	FOREST OIL CORP	SKELLY UNIT	018	EDDY	S:15, T:17S, R:31E	GRAYBURG JACKSON	SR-Q-G-SA	0	Active
30-015-05155	FOREST OIL CORP	SKELLY UNIT	019	EDDY	S:15, T:17S, R:31E	GRAYBURG JACKSON	SR-Q-G-SA	0	Injection Well
30-015-05155	WISER OIL CO (THE)	SKELLY UNIT	019	EDDY	S:15, T:17S, R:31E	GRAYBURG JKSN SR-Q-G-SA(DO NOT USE)		0	Injection Well
		SKELLY			S:15,				

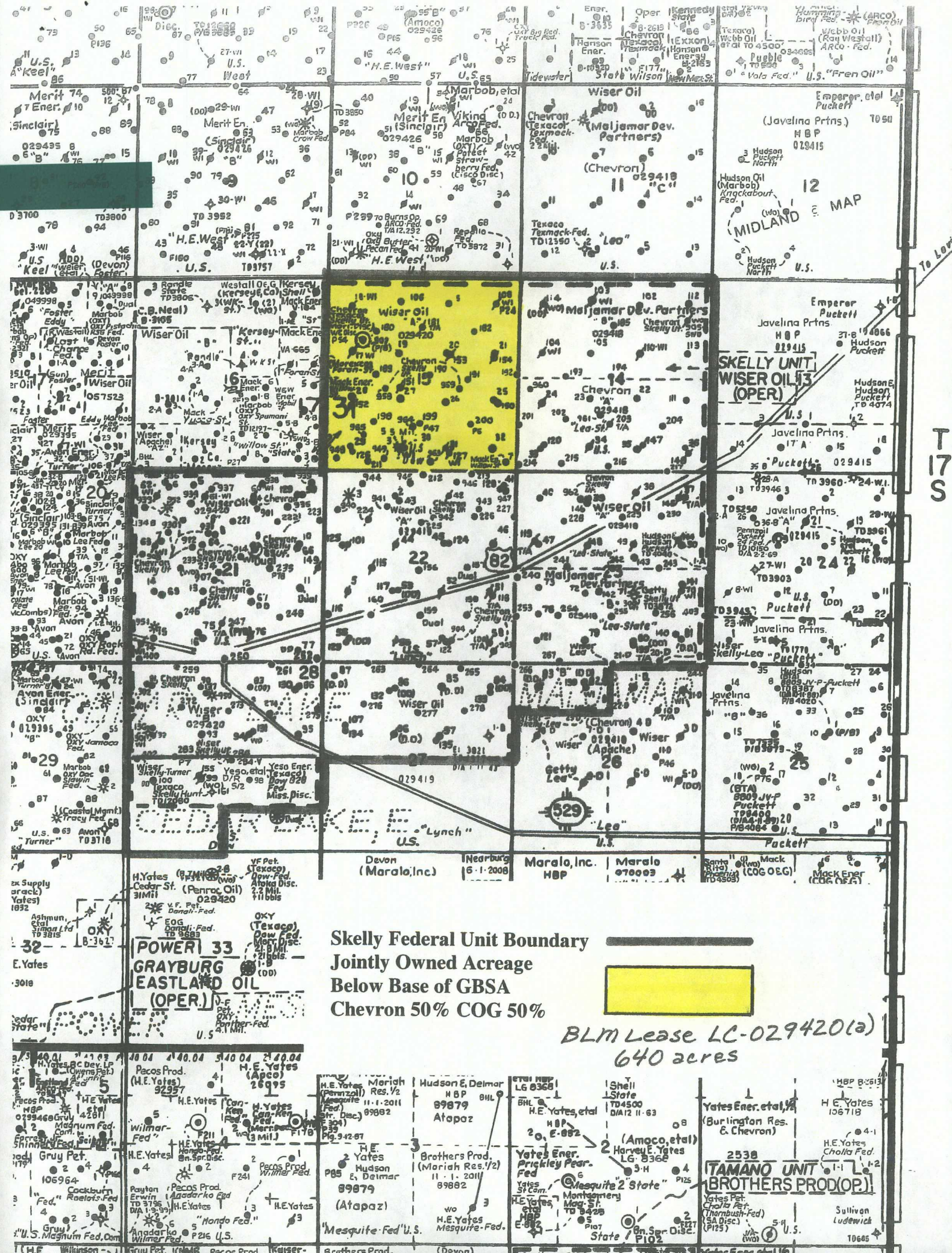
30-015-05156	WISER OIL CO (THE)	UNIT	028	EDDY	T:17S, R:31E	GRAYBURG JKSN SR-Q-G-SA(DO NOT USE)		0	Injection Well
30-015-05156	FOREST OIL CORP	SKELLY UNIT	028	EDDY	S:15, T:17S, R:31E	GRAYBURG JACKSON	SR-Q-G-SA	0	Injection Well
30-015-05157	FOREST OIL CORP	SKELLY UNIT	026	EDDY	S:15, T:17S, R:31E	GRAYBURG JACKSON	SR-Q-G-SA	0	Active
30-015-05157	WISER OIL CO (THE)	SKELLY UNIT	026	EDDY	S:15, T:17S, R:31E	GRAYBURG JKSN SR-Q-G-SA(DO NOT USE)		0	Active
30-015-05158	WISER OIL CO (THE)	SKELLY UNIT	021	EDDY	S:15, T:17S, R:31E	GRAYBURG JKSN SR-Q-G-SA(DO NOT USE)		0	Flowing
30-015-05158	FOREST OIL CORP	SKELLY UNIT	021	EDDY	S:15, T:17S, R:31E	GRAYBURG JACKSON	SR-Q-G-SA	0	Flowing
30-015-05159	FOREST OIL CORP	SKELLY UNIT	027	EDDY	S:15, T:17S, R:31E	GRAYBURG JACKSON	SR-Q-G-SA	0	Pumping
30-015-05159	WISER OIL CO (THE)	SKELLY UNIT	027	EDDY	S:15, T:17S, R:31E	GRAYBURG JKSN SR-Q-G-SA(DO NOT USE)		0	Pumping
30-015-05160	FOREST OIL CORP	SKELLY UNIT	025	EDDY	S:15, T:17S, R:31E	GRAYBURG JACKSON	SR-Q-G-SA	0	Active
30-015-05160	WISER OIL CO (THE)	SKELLY UNIT	025	EDDY	S:15, T:17S, R:31E	GRAYBURG JKSN SR-Q-G-SA(DO NOT USE)		0	Active
30-015-05161	FOREST OIL CORP	SKELLY UNIT	020	EDDY	S:15, T:17S, R:31E	GRAYBURG JACKSON	SR-Q-G-SA	0	Active
30-015-05161	WISER OIL CO (THE)	SKELLY UNIT	020	EDDY	S:15, T:17S, R:31E	GRAYBURG JKSN SR-Q-G-SA(DO NOT USE)		0	Active
30-015-05162	WISER OIL CO (THE)	SKELLY UNIT	032	EDDY	S:15, T:17S, R:31E	GRAYBURG JKSN SR-Q-G-SA(DO NOT USE)		0	Injection Well
30-015-05162	FOREST OIL CORP	SKELLY UNIT	032	EDDY	S:15, T:17S, R:31E	GRAYBURG JACKSON	SR-Q-G-SA	0	Injection Well
30-015-10774	WISER OIL CO (THE)	SKELLY UNIT	030	EDDY	S:15, T:17S, R:31E	GRAYBURG JACKSON	SR-Q-G-SA	0	Active

30-015-20366	FOREST OIL CORP	SKELLY UNIT	106	EDDY	T:17S, R:31E	GRAYBURG JACKSON	SR-Q-G-SA	0	Injection Well
30-015-20366	WISER OIL CO (THE)	SKELLY UNIT	106	EDDY	S:15, T:17S, R:31E	GRAYBURG JKSN SR-Q-G-SA(DO NOT USE)		0	Injection Well
30-015-20406	FOREST OIL CORP	SKELLY UNIT	108	EDDY	S:15, T:17S, R:31E	GRAYBURG JACKSON	SR-Q-G-SA	0	Injection Well
30-015-20406	WISER OIL CO (THE)	SKELLY UNIT	108	EDDY	S:15, T:17S, R:31E	GRAYBURG JKSN SR-Q-G-SA(DO NOT USE)		0	Injection Well
30-015-20468	FOREST OIL CORP	SKELLY UNIT	109	EDDY	S:15, T:17S, R:31E	GRAYBURG JACKSON	SR-Q-G-SA	0	Injection Well
30-015-20468	WISER OIL CO (THE)	SKELLY UNIT	109	EDDY	S:15, T:17S, R:31E	GRAYBURG JKSN SR-Q-G-SA(DO NOT USE)		0	Injection Well
30-015-22260	FOREST OIL CORP	SKELLY UNIT	126	EDDY	S:15, T:17S, R:31E	GRAYBURG JACKSON	SR-Q-G-SA	0	Active
30-015-22261	FOREST OIL CORP	SKELLY UNIT	127	EDDY	S:15, T:17S, R:31E	GRAYBURG JACKSON	SR-Q-G-SA	0	Injection Well
30-015-22483	FOREST OIL CORP	SKELLY UNIT	150	EDDY	S:15, T:17S, R:31E	GRAYBURG JACKSON	SR-Q-G-SA	0	Pumping
30-015-28965	FOREST OIL CORP	SKELLY UNIT	181	EDDY	S:15, T:17S, R:31E	GRAYBURG JACKSON	SR-Q-G-SA	3,950	Shut-in
30-015-28972	FOREST OIL CORP	SKELLY UNIT	199	EDDY	S:15, T:17S, R:31E	GRAYBURG JACKSON	SR-Q-G-SA	4,000	Pumping
30-015-28998	FOREST OIL CORP	SKELLY UNIT	200	EDDY	S:15, T:17S, R:31E	GRAYBURG JACKSON	SR-Q-G-SA	4,000	Pumping
30-015-29013	FOREST OIL CORP	SKELLY UNIT	198	EDDY	S:15, T:17S, R:31E	GRAYBURG JACKSON	SR-Q-G-SA	4,000	Pumping
30-015-29092	FOREST OIL CORP	SKELLY UNIT	211	EDDY	S:15, T:17S, R:31E	GRAYBURG JACKSON	SR-Q-G-SA	4,000	Pumping
30-015-29203	FOREST OIL CORP	SKELLY UNIT	180	EDDY	S:15, T:17S, R:31E	GRAYBURG JACKSON	SR-Q-G-SA	3,950	Active

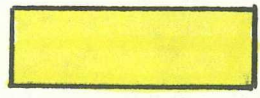
30-015-29204	FOREST OIL CORP	SKELLY UNIT	182	EDDY	T:17S, R:31E	GRAYBURG JACKSON	SR-Q-G-SA	3,950	Pumping
30-015-29206	FOREST OIL CORP	SKELLY UNIT	189	EDDY	S:15, T:17S, R:31E	GRAYBURG JACKSON	SR-Q-G-SA	3,925	Pumping
30-015-29207	FOREST OIL CORP	SKELLY UNIT	190	EDDY	S:15, T:17S, R:31E	GRAYBURG JACKSON	SR-Q-G-SA	3,900	Pumping
30-015-29312	FOREST OIL CORP	SKELLY UNIT	191	EDDY	S:15, T:17S, R:31E	GRAYBURG JACKSON	SR-Q-G-SA	3,900	Pumping
30-015-29313	FOREST OIL CORP	SKELLY UNIT	192	EDDY	S:15, T:17S, R:31E	GRAYBURG JACKSON	SR-Q-G-SA	3,950	Pumping
30-015-29322	CHEVRON USA, INC.	SKELLY UNIT	902	EDDY	S:15, T:17S, R:31E	FREN	MORROW	12,300	Active
30-015-29322	CHEVRON USA, INC.	SKELLY UNIT	902	EDDY	S:15, T:17S, R:31E	HENSHAW	WOLFCAMP, SE (O)	12,300	Active
30-015-22531		SKELLY UNIT	153	EDDY	S:15, T:17S, R:31E	FREN	SEVEN RIVERS		Active
30-015-22532		SKELLY UNIT	154	EDDY	S:15, T:17S, R:31E	FREN	SEVEN RIVERS		Active
30-015-22494		SKELLY UNIT	151	EDDY	S:15, T:17S, R:31E	FREN	SEVEN RIVERS		Active
30-015-22495		SKELLY UNIT	152	EDDY	S:15, T:17S, R:31E	FREN	SEVEN RIVERS		Active
30-015-32968	CHEVRON USA, INC.	SKELLY UNIT	949	EDDY	S:15, T:17S, R:31E	FREN	PADDOCK	5,350	Active
30-015-32967	CHEVRON USA, INC.	SKELLY UNIT	948	EDDY	S:15, T:17S, R:31E	FREN	PADDOCK	5,350	Active
30-015-32968	CHEVRON USA, INC.	SKELLY UNIT	949	EDDY	S:15, T:17S, R:31E	FREN	MORROW	5,350	Active
30-015-32967	CHEVRON USA, INC.	SKELLY UNIT	948	EDDY	S:15, T:17S, R:31E	FREN	MORROW	5,350	Active

30-015-00000	SKELLY OIL COMPANY	DOW	003	EDDY	T:17S, R:31E	EDDY COUNTY WILDCATS	Active
30-015-00000	SKELLY OIL CO	DOW A BTRY 1	001	EDDY	S:15, T:17S, R:31E	GRAYBURG JACKSON QUEEN GBR S A CTD	Active
30-015-00000	SKELLY OIL CO	DOW A BTRY 1	002	EDDY	S:15, T:17S, R:31E	GRAYBURG JACKSON QUEEN GBR S A CTD	Active
30-015-00000	SKELLY OIL CO	DOW A BTRY 1	013	EDDY	S:15, T:17S, R:31E	GRAYBURG JACKSON QUEN GBR S A CTD	Active
30-015-00000	SKELLY OIL CO	DOW A FED	004	EDDY	S:15, T:17S, R:31E	GRAYBURG JACKSON QUEEN GBR S A CTD	Active
30-015-00000	SKELLY OIL CO	DOW A FED	005	EDDY	S:15, T:17S, R:31E	GRAYBURG JACKSON QUEEN GBR S A CTD	Active
30-015-00000	SKELLY OIL CO	DOW A FED	006	EDDY	S:15, T:17S, R:31E	GRAYBURG JACKSON QUEEN GBR S A CTD	Active
30-015-00000	SKELLY OIL CO	DOW A FED	007	EDDY	S:15, T:17S, R:31E	GRAYBURG JACKSON QUEEN GBR S A CTD	Active
30-015-00000	SKELLY OIL CO	DOW A FED	008	EDDY	S:15, T:17S, R:31E	GRAYBURG JACKSON QUEEN GBR S A CTD	Active
30-015-00000	SKELLY OIL CO	DOW A FED	009	EDDY	S:15, T:17S, R:31E	GRAYBURG JACKSON QUEEN GBR S A CTD	Active
30-015-00000	SKELLY OIL CO	DOW A FED	010	EDDY	S:15, T:17S, R:31E	GRAYBURG JACKSON QUEEN GBR S A CTD	Active
30-015-00000	SKELLY OIL CO	DOW A FED	011	EDDY	S:15, T:17S, R:31E	GRAYBURG JACKSON QUEEN GBR S A CTD	Active
30-015-00000	SKELLY OIL CO	DOW A FED	012	EDDY	S:15, T:17S, R:31E	GRAYBURG JACKSON QUEEN GBR S A CTD	Active
30-015-00000	SKELLY OIL COMPANY	DOW A	003	EDDY	S:15, T:17S, R:31E	EDDY COUNTY WILDCATS	Active
30-015-00000	SKELLY OIL CO.	DOW A	001	EDDY	S:15, T:17S, R:31E	GRAYBURG JACKSON OIL	Active

30-015-00000	SKELLY OIL CO	DOW A FEDERAL	003	EDDY	T:17S, R:31E	FREN PENN		Active
30-015-00000	SKELLY OIL CO.	DOW A	002	EDDY	S:15, T:17S, R:31E	GRAYBURG-JACKSON		Active
30-015-34143	MACK ENERGY CORP	WILLOW STATE	007	EDDY	S:15, T:17S, R:31E	FREN	MORROW	5,325 Active Permit
30-015-00000	SKELLY OIL COMPANY	DOW A	003	EDDY	S:15, T:17S, R:31E	FREN-PENNSYLVANIAN		Active
30-015-34143	CIMAREX ENERGY CO OF COLORADO	WILLOW STATE	007	EDDY	S:15, T:17S, R:31E	FREN	PADDOCK	5,325 Active Permit
30-015-34318	CHEVRON USA, INC.	SKELLY UNIT	958	EDDY	S:15, T:17S, R:31E	FREN	PADDOCK	5,480 Active Permit
30-015-34327	CHEVRON USA, INC.	SKELLY UNIT	959	EDDY	S:15, T:17S, R:31E	FREN	PADDOCK	5,500 Active Permit
30-015-00000	SKELLY OIL CO	DOW A BATTERY	014	EDDY	S:15, T:17S, R:31E	GRAYBURG JACKSON QUEEN GBR S A CTD		Unknown
30-015-34646	CHEVRON USA, INC.	SKELLY UNIT	963	EDDY	S:15, T:17S, R:31E	FREN	PADDOCK	5,500 Active Permit
30-015-34647	CHEVRON USA, INC.	SKELLY UNIT	#965	EDDY	S:15, T:17S, R:31E	FREN	PADDOCK	5,370 Active Permit
30-015-34686	CHEVRON USA, INC.	SKELLY UNIT	964	EDDY	S:15, T:17S, R:31E	FREN	PADDOCK	5,410 Active Permit
30-015-34647	CHEVRON USA INC. (MACK ENERGY AGENT)	SKELLY UNIT	#965	EDDY	S:15, T:17S, R:31E	FREN PADDOCK		5,370 Active Permit



**Skelly Federal Unit Boundary  
Jointly Owned Acreage  
Below Base of GBSA  
Chevron 50% COG 50%**



**BLM Lease LC-029420(a)  
640 acres**

**POWER 33  
GRAYBURG  
EASTLAND OIL  
(OPER.)**

**TAMANO UNIT  
BROTHERS PROD (OP.)**

T  
17  
S

MIDLAND MAP