

AMERADA HESS CORPORATION

January 8, 1992

P. O. BOX 2040
TULSA, OKLAHOMA 74102
918-599-4200

State Land Office Building
310 Old Santa Fe Trail, Rm 206
Santa Fe, New Mexico 87504

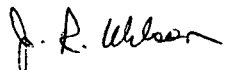
Attn: ~~David R. Catanach~~

Amerada Hess Corporation is requesting exception to the well location requirements for the following "NORTH MONUMENT GRAYBURG SAN ANDRES UNIT WELLS": Blk 5 #30, Blk 2 #25, Blk 4 #30, Blk 6 #19, Blk 9 #25. These well locations comply with Rule 104 F (1) requirements.

All of the above locations were moved to their present position due to either existing pipe lines or roads interfering with the previous location.

See attached Survey Plats and also Unit Plats of well locations.

Sincerely,



J. R. Wilson
Amerada Hess Corporation

JRW:ti
attachments

**NEW MEXICO OIL CONSERVATION COMMISSION
WELL LOCATION AND ACREAGE DEDICATION PLAT**

Form C-102
Supersedes C-120
Effective 1-4-85

All distances must be from the outer boundaries of the Section

Blk 9

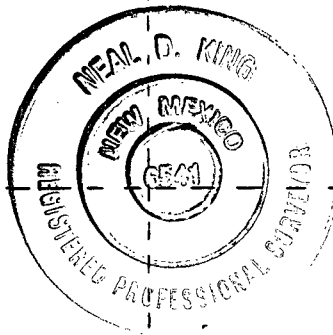
Operator AMERADA-HESS CORPORATION			Lease Production			Well No. 25		
Unit Letter I	Section 25	Township 19S	Range 36E	County Lea				
Actual Footage Location of Well: 2523.6 feet from the South line and 235 feet from the East line								
Ground Level Elev. 3638	Producing Formation GRAYBURG SAN ANDRES		Pool EUNICE MONUMENT G/SA			Dedicated Acreage: 40 Acres		

1. Outline the acreage dedicated to the subject well by colored pencil or hatchure marks on the plat below.
2. If more than one lease is dedicated to the well, outline each and identify the ownership thereof (both as to working interest and royalty).
3. If more than one lease of different ownership is dedicated to the well, have the interests of all owners been consolidated by communitization, unitization, force-pooling, etc?

☐ Yes ☐ No If answer is "yes," type of consolidation UNITIZED ORDER #R-9494

If answer is "no," list the owners and tract descriptions which have actually been consolidated. (Use reverse side of this form if necessary.) UNITIZED ORDER #R-9494

No allowable will be assigned to the well until all interests have been consolidated (by communitization, unitization, forced-pooling, or otherwise) or until a non-standard unit, eliminating such interests, has been approved by the Commission.



CERTIFICATION

I hereby certify that the information contained herein is true and complete to the best of my knowledge and belief.

J. R. Wilson
Name

J. R. WILSON

Position:

SUPERVISOR, DRLG ADMIN. SVS.

Company:

AMERADA HESS CORPORATION

Date:

12/20/91

I hereby certify that the well location shown on this plat was plotted from field notes of actual surveys made by me or under my supervision, and that the same is true and correct to the best of my knowledge and belief.

December 10, 1991

Date Surveyed

Registered Professional Engineer
and/or Land Surveyor

Neal D. King
Certificate No.

R. L. S. 6541



**NEW MEXICO OIL CONSERVATION COMMISSION
WELL LOCATION AND ACREAGE DEDICATION PLAT**

Form C-102
Supersedes C-128
Effective 1-4-83

All distances must be from the outer boundaries of the Section

Blk 5

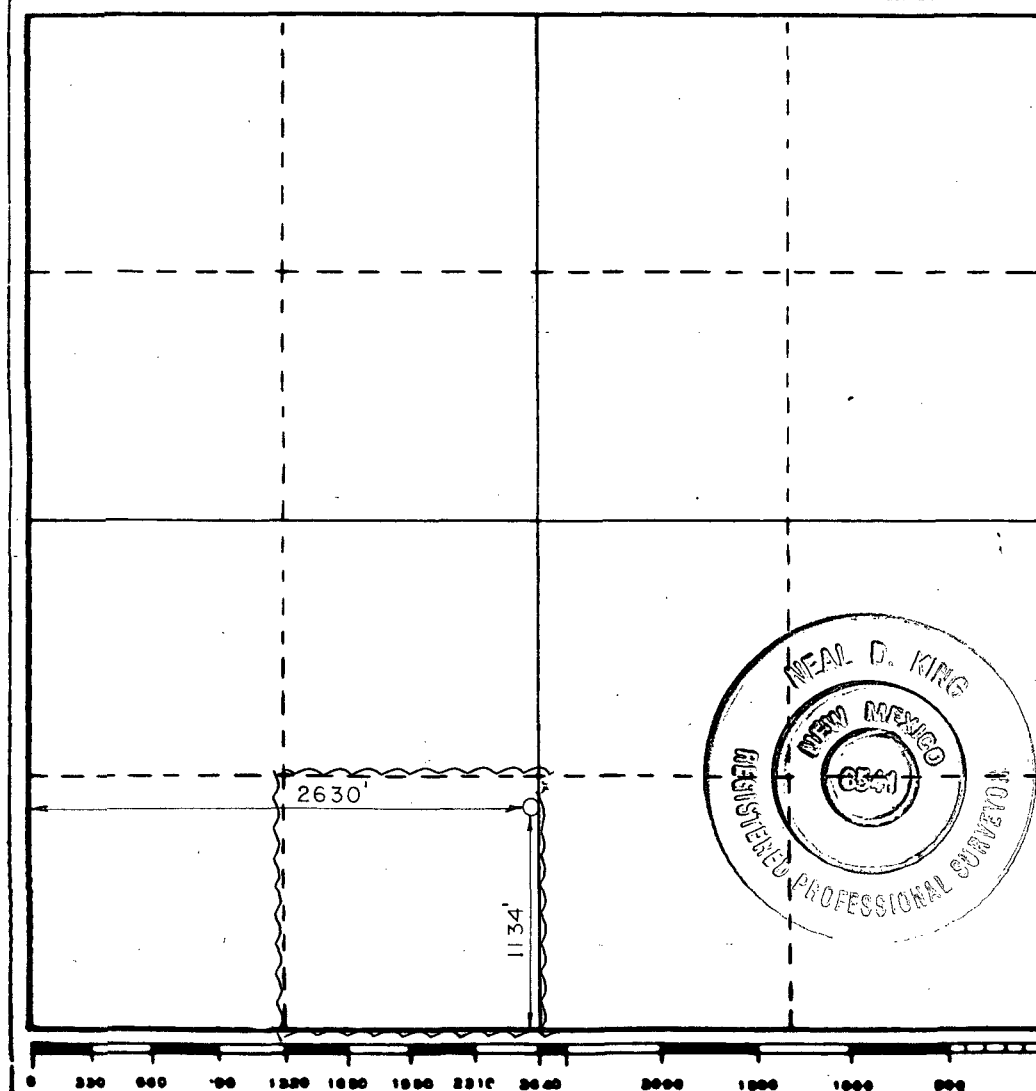
Operator AMERADA-HESS CORPORATION			Lease Production		Well No. 30
Unit Letter N	Section 19	Township 19S	Range 37E	County Lea	
Actual Footage Location of Well: 1134 feet from the South line and 2630 feet from the West line					
Ground Level Elev. 3664	Producing Formation GRAYBURG SAN ANDRES		Pool EUNICE MONUMENT G/SA		Dedicated Acreage: 40 Acres

1. Outline the acreage dedicated to the subject well by colored pencil or hatchure marks on the plat below.
2. If more than one lease is dedicated to the well, outline each and identify the ownership thereof (both as to working interest and royalty).
3. If more than one lease of different ownership is dedicated to the well, have the interests of all owners been consolidated by communitization, unitization, force-pooling, etc?

☐ Yes ☐ No If answer is "yes," type of consolidation UNITIZED ORDER #R-9494

If answer is "no," list the owners and tract descriptions which have actually been consolidated. (Use reverse side of this form if necessary.) UNITIZED ORDER #R-9494

No allowable will be assigned to the well until all interests have been consolidated (by communitization, unitization, forced-pooling, or otherwise) or until a non-standard unit, eliminating such interests, has been approved by the Commission.



CERTIFICATION

I hereby certify that the information contained herein is true and complete to the best of my knowledge and belief.

J. R. Wilson

Name
J. R. WILSON

Position
SUPERVISOR, DRLG ADMIN. SVS

Company
AMERADA HESS CORPORATION

Date
12/20/91

I hereby certify that the well location shown on this plat was plotted from field notes of actual surveys made by me or under my supervision, and that the same is true and correct to the best of my knowledge and belief.

December 10, 1991

Date Surveyed

Registered Professional Engineer and or Land Surveyor

Neal D. King

Certificate No. **R.L.S. 6541**

**NEW MEXICO OIL CONSERVATION COMMISSION
WELL LOCATION AND ACREAGE DEDICATION PLAT**

Form C-102
Supersedes C-128
Effective 1-1-63

All distances must be from the outer boundaries of the Section

B1K 4

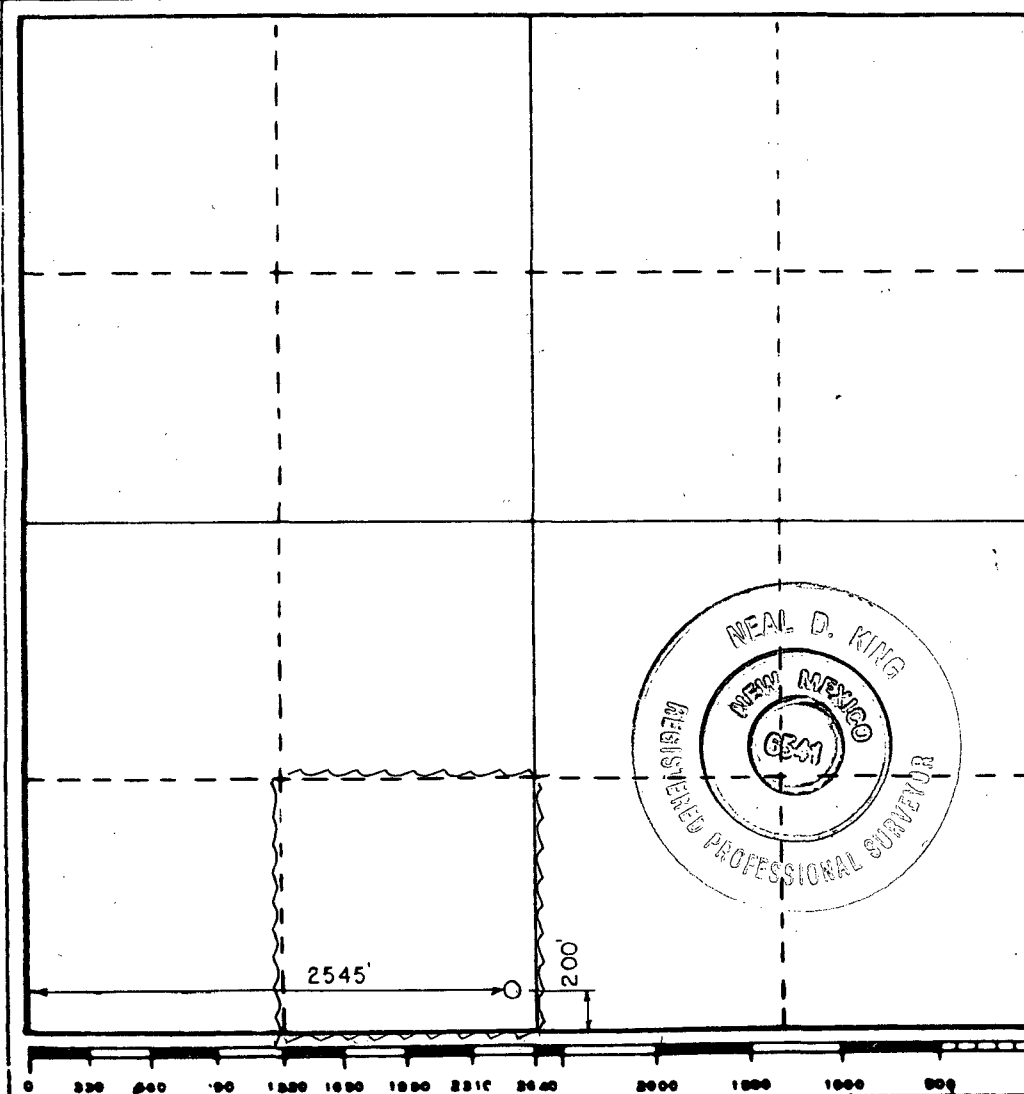
Operator AMERADA-HESS CORPORATION			Lease Production		Well No. 30
Unit Letter N	Section 24	Township 19S	Range 36E	County Lea	
Actual Footage Location of Well: <div style="display: flex; justify-content: space-between;"> 200 feet from the South line and 2545 feet from the West line </div>					
Ground Level Elev. 3684.5	Producing Formation GRAYBURG SAN ANDRES	Pool EUNICE MONUMENT G/SA		Dedicated Acreage: N/A Acres	

1. Outline the acreage dedicated to the subject well by colored pencil or hatchure marks on the plat below.
2. If more than one lease is dedicated to the well, outline each and identify the ownership thereof (both as to working interest and royalty).
3. If more than one lease of different ownership is dedicated to the well, have the interests of all owners been consolidated by communitization, unitization, force-pooling, etc?

☐ Yes ☐ No If answer is "yes," type of consolidation UNITIZED ORDER #R-9494

If answer is "no," list the owners and tract descriptions which have actually been consolidated. (Use reverse side of this form if necessary.) UNITIZED ORDER #R-9494

No allowable will be assigned to the well until all interests have been consolidated (by communitization, unitization, forced-pooling, or otherwise) or until a non-standard unit, eliminating such interests, has been approved by the Commission.



CERTIFICATION

I hereby certify that the information contained herein is true and complete to the best of my knowledge and belief.

J. R. Wilson
 Name
J. R. WILSON
 Position
SUPERVISOR, DRLG ADMIN. SVS.
 Company
AMERADA HESS CORPORATION
 Date
12/17/91

I hereby certify that the well location shown on this plat was plotted from field notes of actual surveys made by me or under my supervision, and that the same is true and correct to the best of my knowledge and belief.

December 13, 1991

Date Surveyed
 Registered Professional Engineer and or Land Surveyor
Neal D. King
 Certificate No. **R.L.S. 6541**

**NEW MEXICO OIL CONSERVATION COMMISSION
WELL LOCATION AND ACREAGE DEDICATION PLAT**

Form C-102
Supersedes C-120
Effective 1-4-85

All distances must be from the outer boundaries of the Section.

Blk 2

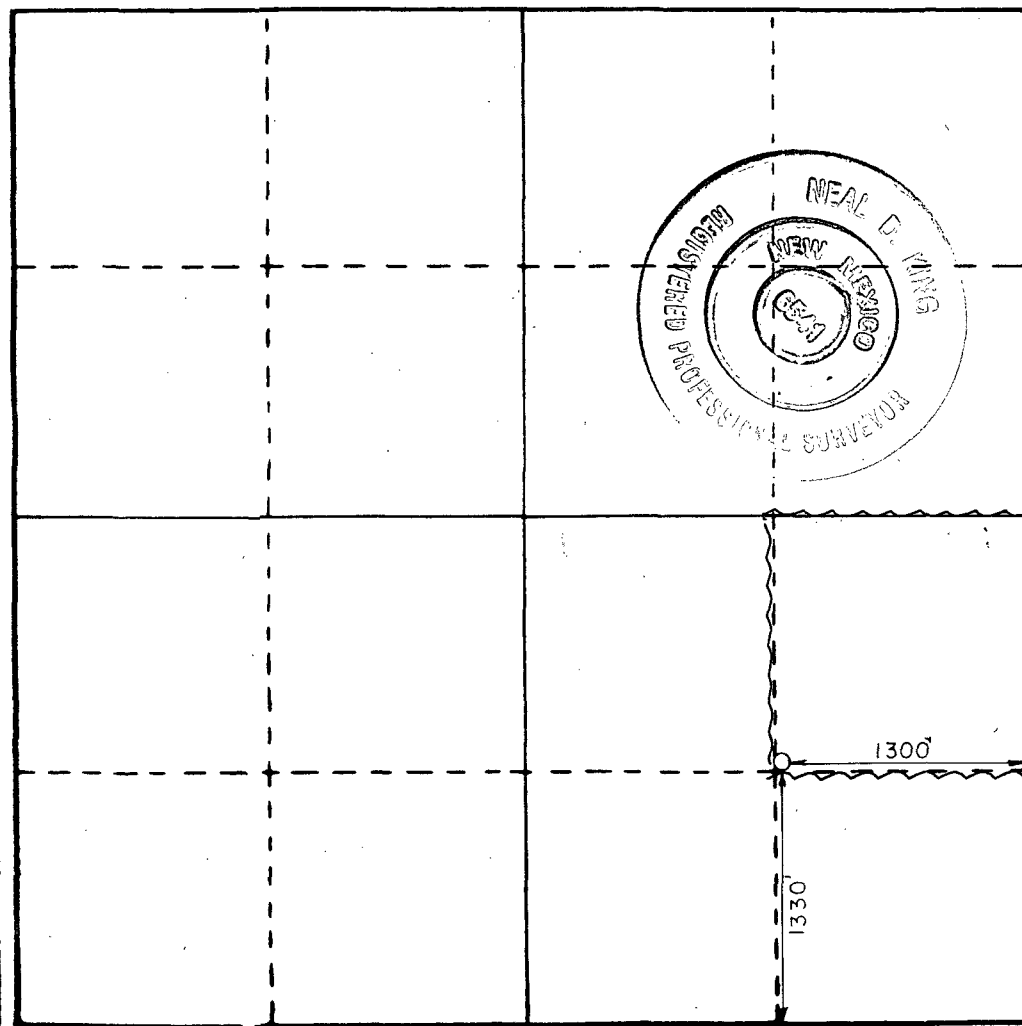
Operator AMERADA-HESS CORPORATION			Lease Proudction			Well No. 25		
Unit Letter I	Section 18	Township 19S	Range 37E	County Lea				
Actual Footage Location of Well: <div style="display: flex; justify-content: space-between;"> 1330 feet from the South line and 1300 feet from the East line </div>								
Ground Level Elev. 3697.6	Producing Formation GRAYBURG SAN ANDRES		Pool EUNICE MONUMENT G/SA			Dedicated Acreage: 40 Acres		

1. Outline the acreage dedicated to the subject well by colored pencil or hatchure marks on the plat below.
2. If more than one lease is dedicated to the well, outline each and identify the ownership thereof (both as to working interest and royalty).
3. If more than one lease of different ownership is dedicated to the well, have the interests of all owners been consolidated by communitization, unitization, force-pooling, etc?

☐ Yes ☐ No If answer is "yes," type of consolidation UNITIZED ORDER #R-9494

If answer is "no," list the owners and tract descriptions which have actually been consolidated. (Use reverse side of this form if necessary.) UNITIZED ORDER #R-9494

No allowable will be assigned to the well until all interests have been consolidated (by communitization, unitization, forced-pooling, or otherwise) or until a non-standard unit, eliminating such interests, has been approved by the Commission.



CERTIFICATION

I hereby certify that the information contained herein is true and complete to the best of my knowledge and belief.

J. R. Wilson
Name

J. R. WILSON
Position

SUPERVISOR, DRLG ADMIN. SVS.
Company

AMERADA HESS CORPORATION
Date

12/20/91

I hereby certify that the well location shown on this plat was plotted from field notes of actual surveys made by me or under my supervision, and that the same is true and correct to the best of my knowledge and belief.

December 9, 1991

Date Surveyed

Registered Professional Engineer
and or Land Surveyor

Neal D. King
Certificate No.

R.L.S. 6541



**NEW MEXICO OIL CONSERVATION COMMISSION
WELL LOCATION AND ACREAGE DEDICATION PLAT**

Form C-102
Supersedes C-128
Effective 1-1-85

All distances must be from the outer boundaries of the Section

BIK 6

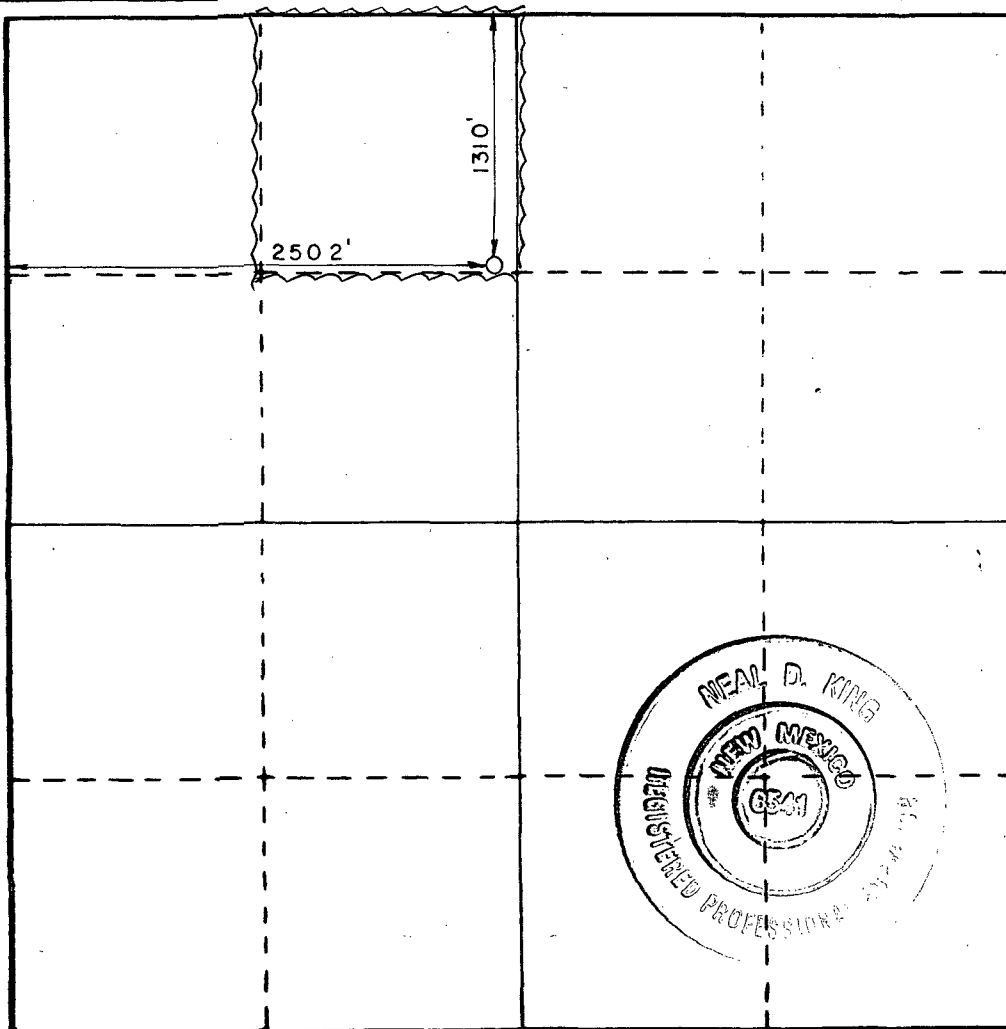
Operator AMERADA-HESS CORPORATION			Lease Production		Well No. 19
Unit Letter C	Section 20	Township 19S	Range 37E	County Lea	
Actual Footage Location of Well: 1310 feet from the North line and 2502 feet from the West line					
Ground Level Elev. 3683	Producing Formation GRAYBURG SAN ANDRES		Pool EUNICE MONUMENT G/SA		Dedicated Acreage: 40 Acres

1. Outline the acreage dedicated to the subject well by colored pencil or hatchure marks on the plat below.
2. If more than one lease is dedicated to the well, outline each and identify the ownership thereof (both as to working interest and royalty).
3. If more than one lease of different ownership is dedicated to the well, have the interests of all owners been consolidated by communitization, unitization, force-pooling, etc?

☐ Yes ☐ No If answer is "yes," type of consolidation UNITIZED ORDER #R-9494

If answer is "no," list the owners and tract descriptions which have actually been consolidated. (Use reverse side of this form if necessary.) UNITIZED ORDER R-9494

No allowable will be assigned to the well until all interests have been consolidated (by communitization, unitization, forced-pooling, or otherwise) or until a non-standard unit, eliminating such interests, has been approved by the Commission.



CERTIFICATION

I hereby certify that the information contained herein is true and complete to the best of my knowledge and belief.

J. R. WILSON *J. R. Wilson*

Name
SUPERVISOR, DRLG ADMIN SV

Position
AMERADA HESS CORPORATION

Company
12/31/91

Date

I hereby certify that the well location shown on this plat was plotted from field notes of actual surveys made by me or under my supervision, and that the same is true and correct to the best of my knowledge and belief.

December 12, 1991

Date Surveyed

Registered Professional Engineer
and or Land Surveyor

Certificate No.

Neal D. King
R.L.S. 6541

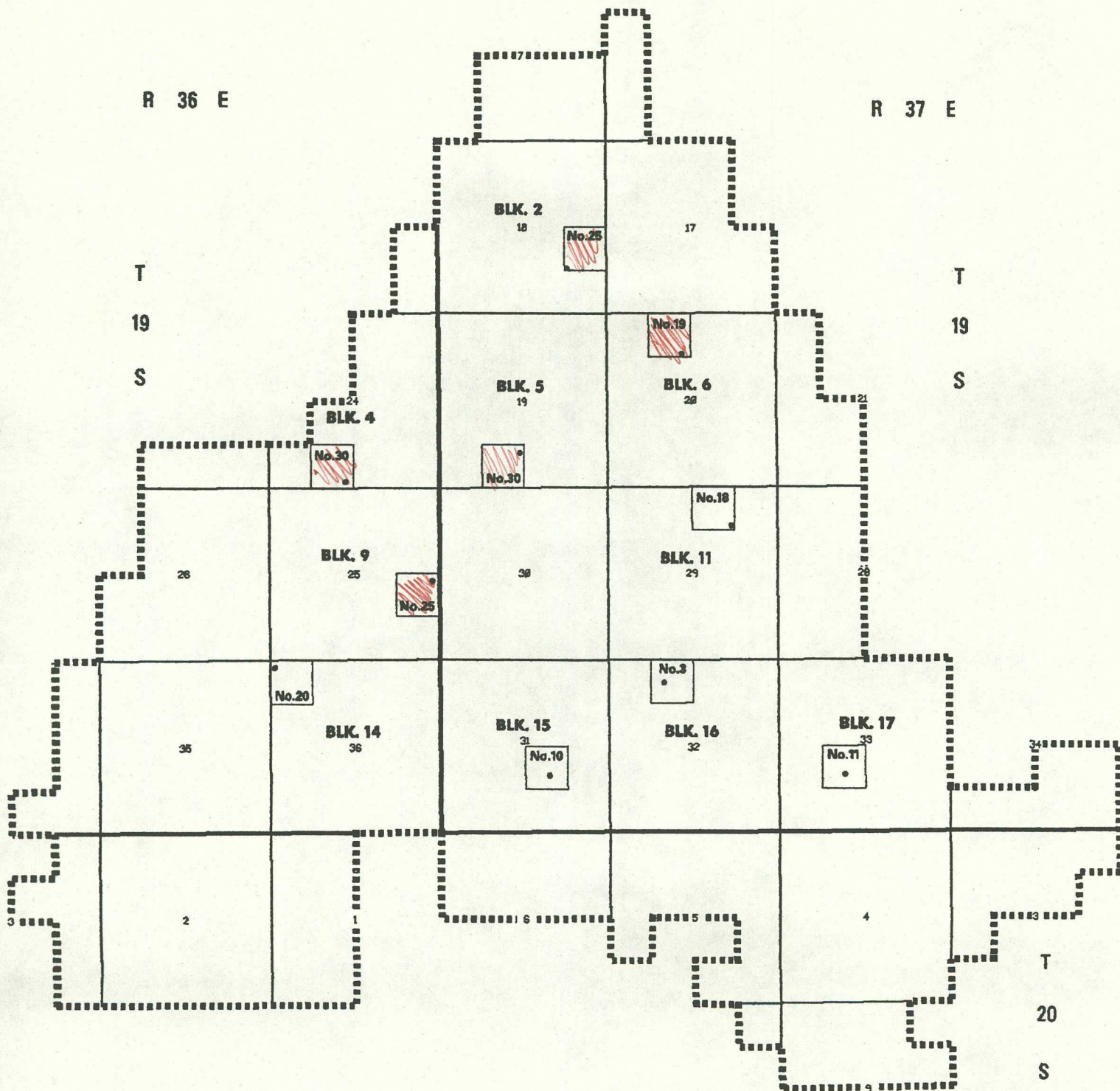


R 36 E

R 37 E

T
19
S

T
19
S



2 INJECTION WELLS : BLK 16 #3 & BLK 17 #11
 2 WATER SUPPLY WELLS: BLK 11 #18 & BLK 14 #20
 6 PRODUCTION WELLS: BLK 2 #25, BLK 5 #30,
 BLK 9 #25, BLK 4 #30,
 BLK 6 #19, BLK 15 10

No. 10

40 AC TRACK FOR WELL.

AMERADA HESS CORPORATION

NORTH MONUMENT /GRAYBURG
 SAN ANDRES UNIT

LEA COUNTY, NEW MEXICO

1992 DRILLING PROGRAM

