

'92 JUL 29 AM



July 28, 1992

New Mexico Oil Conservation Commission
Attn: David Catarach
P.O. Box 2088
Santa Fe, NM 87504-2088

Dear Sir:

Applications were turned in July 28, 1992, at the Hobbs OCC office to drill three wells. These three wells will be drilled on Sections 21, 22, and 27 of Township 22S, Range 37E, Lea County, NM. This is the Anadarko Langlie Mattix Penrose Sand Unit.

Mr. Sexton at OCC office in Hobbs suggested that I send you this letter, stating that these three locations are not standard locations. They are closer than 310' from $\frac{1}{4}$ section lines, however, all three wells are approximately one mile from unit boundaries. No well will be drilled on same forty acres with another operator's well. We are enclosing surveyor's plats and a unit map showing proposed wells.

Thank you,

John C. English
Area Supervisor

JCE:sm
Enclosures

OIL CONSERVATION DIVISION

P.O. Box 2088

Santa Fe, New Mexico 87504-2088

DISTRICT I

P.O. Box 1980, Hobbs, NM 88240

DISTRICT II

P.O. Drawer DD, Artesia, NM 88210

DISTRICT III

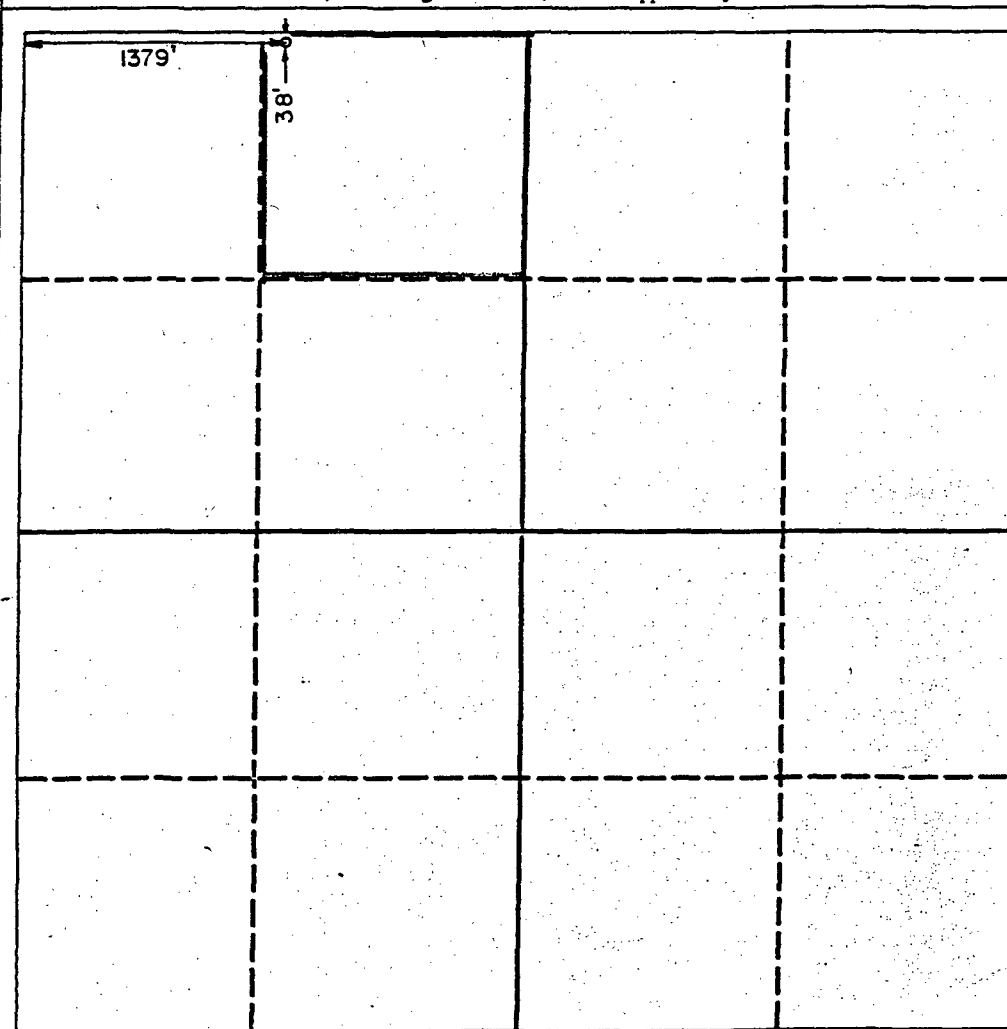
1000 Rio Brazos Rd., Aztec, NM 87410

WELL LOCATION AND ACREAGE DEDICATION PLAT

All Distances must be from the outer boundaries of the section

Operator Anadarko Petroleum Company			Lease L.M.P.S.U. Tract 13C		Well No. 13
Unit Letter C	Section 27	Township 22-S	Range 37-E	County Lea	
Actual Footage Location of Well: 38 feet from the North line and 1379 feet from the West line					
Ground level Elev. 3344.4	Producing Formation Penrose Queen		Pool Langlie Mattix		Dedicated Acreage: 40 Acres

- Outline the acreage dedicated to the subject well by colored pencil or hatchure marks on the plat below.
- If more than one lease is dedicated to the well, outline each and identify the ownership thereof (both as to working interest and royalty).
- If more than one lease of different ownership is dedicated to the well, have the interest of all owners been consolidated by communitization, unitization, force-pooling, etc.?
☐ Yes ☐ No If answer is "yes" type of consolidation _____
If answer is "no" list the owners and tract descriptions which have actually been consolidated. (Use reverse side of this form if necessary).
No allowable will be assigned to the well until all interests have been consolidated (by communitization, unitization, forced-pooling, or otherwise) or until a non-standard unit, eliminating such interest, has been approved by the Division.



OPERATOR CERTIFICATION

I hereby certify that the information contained herein is true and complete to the best of my knowledge and belief.

Signature *John C. English*

Printed Name
John C. English

Position
Area Supervisor

Company
Anadarko Petroleum

Date
July 27, 1992

SURVEYOR CERTIFICATION

I hereby certify that the well location shown on this plat was plotted from field notes of actual surveys made by me or under my supervision, and that the same is true and correct to the best of my knowledge and belief.

Date Surveyed
June 20, 1992

Signature & Seal of
Professional Surveyor

Ronald J. Eason
Certificate No. 3 JOHN W. WEST, 676
RONALD J. EASON, 3239
92-11-20839
REGISTERED LAND SURVEYOR
NEW MEXICO

OIL CONSERVATION DIVISION

P.O. Box 2088

Santa Fe, New Mexico 87504-2088

DISTRICT I

P.O. Box 1980, Hobbs, NM 88240

DISTRICT II

P.O. Drawer DD, Artesia, NM 88210

DISTRICT III

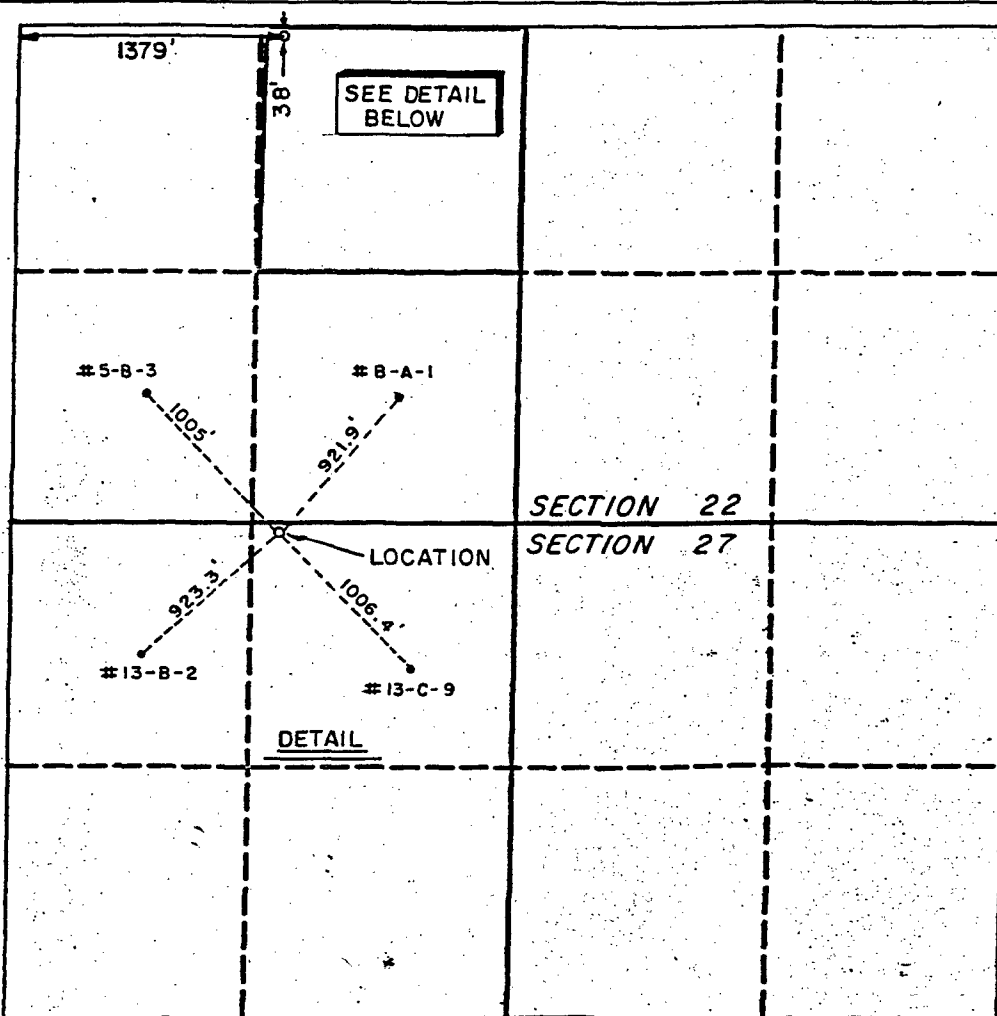
1000 Rio Brazos Rd., Aztec, NM 87410

WELL LOCATION AND ACREAGE DEDICATION PLAT

All Distances must be from the outer boundaries of the section

Operator Anadarko Petroleum Company			Lease L.M.P.S.U. Tract 13C		Well No. 13
Unit Letter C	Section 27	Township 22-S	Range 37-E	County NMNM	Lea
Actual Footage Location of Well: 38 feet from the North line and 1379 feet from the West line					
Ground level Elev. 3344.4	Producing Formation Penrose Queen		Pool Langlie Mattix		Dedicated Acreage: 40 Acres

- Outline the acreage dedicated to the subject well by colored pencil or hatchure marks on the plat below.
- If more than one lease is dedicated to the well, outline each and identify the ownership thereof (both as to working interest and royalty).
- If more than one lease of different ownership is dedicated to the well, have the interest of all owners been consolidated by communitization, unitization, force-pooling, etc.?
☐ Yes ☐ No If answer is "yes" type of consolidation _____
If answer is "no" list the owners and tract descriptions which have actually been consolidated. (Use reverse side of this form if necessary).
No allowable will be assigned to the well until all interests have been consolidated (by communitization, unitization, forced-pooling, or otherwise) or until a non-standard unit, eliminating such interest, has been approved by the Division.



OPERATOR CERTIFICATION

I hereby certify that the information contained herein is true and complete to the best of my knowledge and belief.

Signature *John C. English*

Printed Name
John C. English

Position
Area Supervisor

Company
Anadarko Petroleum

Date
July 27, 1992

SURVEYOR CERTIFICATION

I hereby certify that the well location shown on this plat was plotted from field notes of actual surveys made by me or under my supervision, and that the same is true and correct to the best of my knowledge and belief.

Date Surveyed
June 20, 1992

Signature & Seal of
Professional Surveyor

Ronald J. Enson
Certificate No. 676
RONALD J. ENSON
92-16-0839
NEW MEXICO
ALD J. ENSON

OIL CONSERVATION DIVISION

P.O. Box 2088

Santa Fe, New Mexico 87504-2088

DISTRICT I

P.O. Box 1980, Hobbs, NM 88240

DISTRICT II

P.O. Drawer DD, Artesia, NM 88210

DISTRICT III

1000 Rio Brazos Rd., Aztec, NM 87410

WELL LOCATION AND ACREAGE DEDICATION PLAT

All Distances must be from the outer boundaries of the section

Operator Anadarko Petroleum Co.			Lease L.M.P.S.U. Tract 10		Well No. 5
Unit Letter J	Section 21	Township 22-S	Range 37-E	County Lea	
Actual Footage Location of Well: 1390 feet from the South line and 1339 feet from the East line					
Ground level Elev. 3352.2	Producing Formation Penrose Queen		Pool Langlie Mattix		Dedicated Acreage: 40 Acres

1. Outline the acreage dedicated to the subject well by colored pencil or hatchure marks on the plat below.

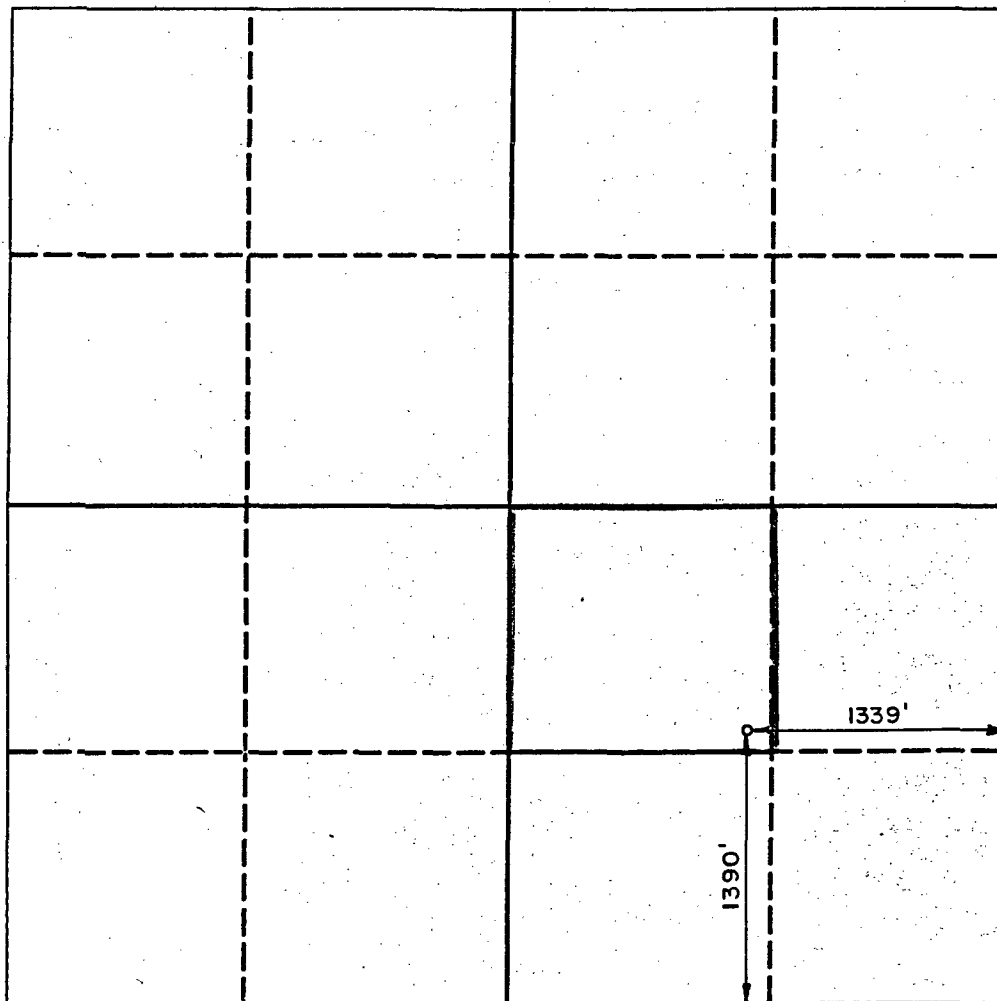
2. If more than one lease is dedicated to the well, outline each and identify the ownership thereof (both as to working interest and royalty).

3. If more than one lease of different ownership is dedicated to the well, have the interest of all owners been consolidated by communitization, unitization, force-pooling, etc.?

☐ Yes ☐ No If answer is "yes" type of consolidation

If answer is "no" list the owners and tract descriptions which have actually been consolidated. (Use reverse side of this form if necessary.)

No allowable will be assigned to the well until all interests have been consolidated (by communitization, unitization, forced-pooling, or otherwise) or until a non-standard unit, eliminating such interest, has been approved by the Division.



OPERATOR CERTIFICATION

I hereby certify that the information contained herein is true and complete to the best of my knowledge and belief.

Signature: *John C. English*

Printed Name
John C. English

Position
Area Supervisor

Company
Anadarko Petroleum

Date
July 27, 1992

SURVEYOR CERTIFICATION

I hereby certify that the well location shown on this plat was plotted from field notes of actual surveys made by me or under my supervision, and that the same is true and correct to the best of my knowledge and belief.

Date Surveyed
June 20, 1992

Signature & Seal of
Professional Surveyor

REGISTERED LAND SURVEYOR
Certificate No. JOHN W. WEST, 676
RONALD L. EIDSON, 3239

92-11-0752

OIL CONSERVATION DIVISION

DISTRICT I
P.O. Box 1980, Hobbs, NM 88240

P.O. Box 2088

Santa Fe, New Mexico 87504-2088

DISTRICT II
P.O. Drawer DD, Artesia, NM 88210

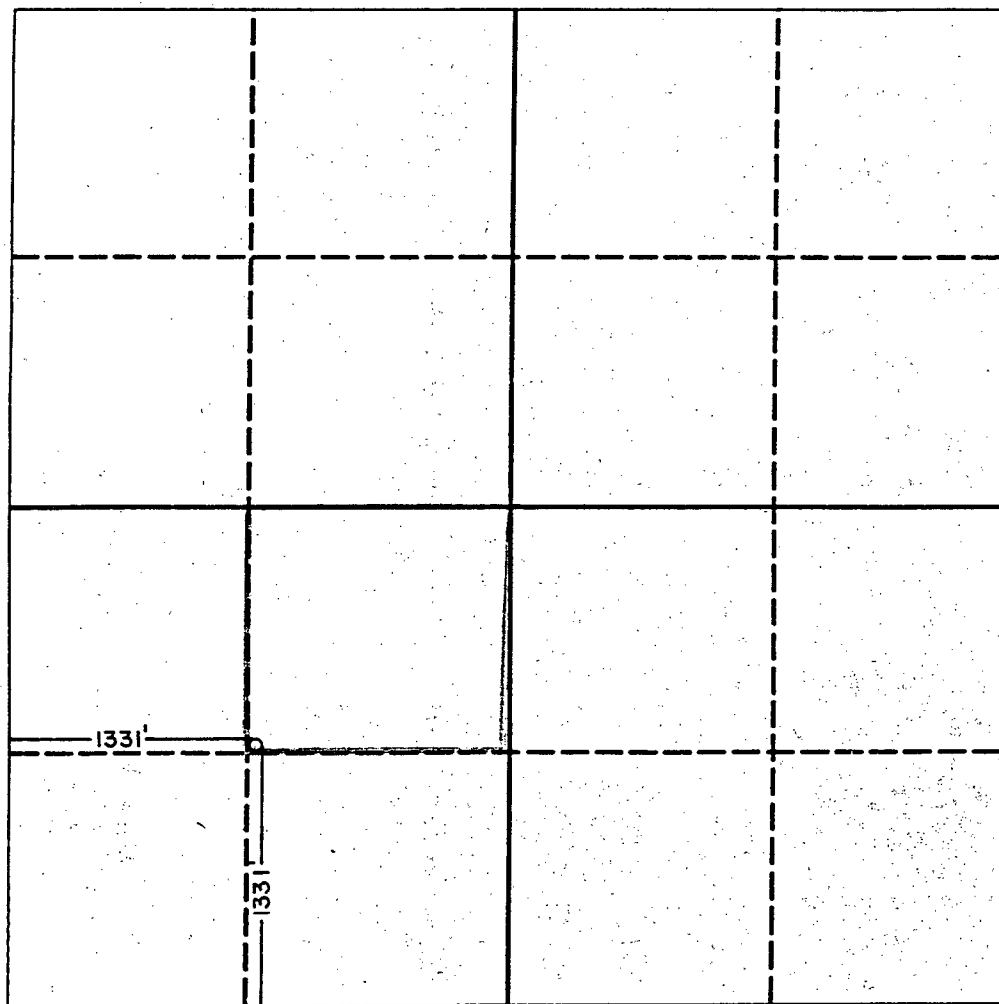
DISTRICT III
1000 Rio Brazos Rd., Aztec, NM 87410

WELL LOCATION AND ACREAGE DEDICATION PLAT

All Distances must be from the outer boundaries of the section

Operator ANADARKO PETROLEUM COMPANY			Lease L.M.P.S.U. Tract 4		Well No. 5
Unit Letter K	Section 22	Township 22 South	Range 37 East	County lea	
Actual Footage Location of Well: 1331 feet from the South line and 1331 feet from the West line					
Ground level Elev. 3346.5	Producing Formation Penrose Queen		Pool Langlie Mattix	Dedicated Acreage: 40 Acres	

- Outline the acreage dedicated to the subject well by colored pencil or hatchure marks on the plat below.
- If more than one lease is dedicated to the well, outline each and identify the ownership thereof (both as to working interest and royalty).
- If more than one lease of different ownership is dedicated to the well, have the interest of all owners been consolidated by communitization, unitization, force-pooling, etc.?
☐ Yes ☐ No If answer is "yes" type of consolidation _____
If answer is "no" list the owners and tract descriptions which have actually been consolidated. (Use reverse side of this form if necessary). _____
No allowable will be assigned to the well until all interests have been consolidated (by communitization, unitization, forced-pooling, or otherwise) or until a non-standard unit, eliminating such interest, has been approved by the Division.



OPERATOR CERTIFICATION

I hereby certify that the information contained herein is true and complete to the best of my knowledge and belief.

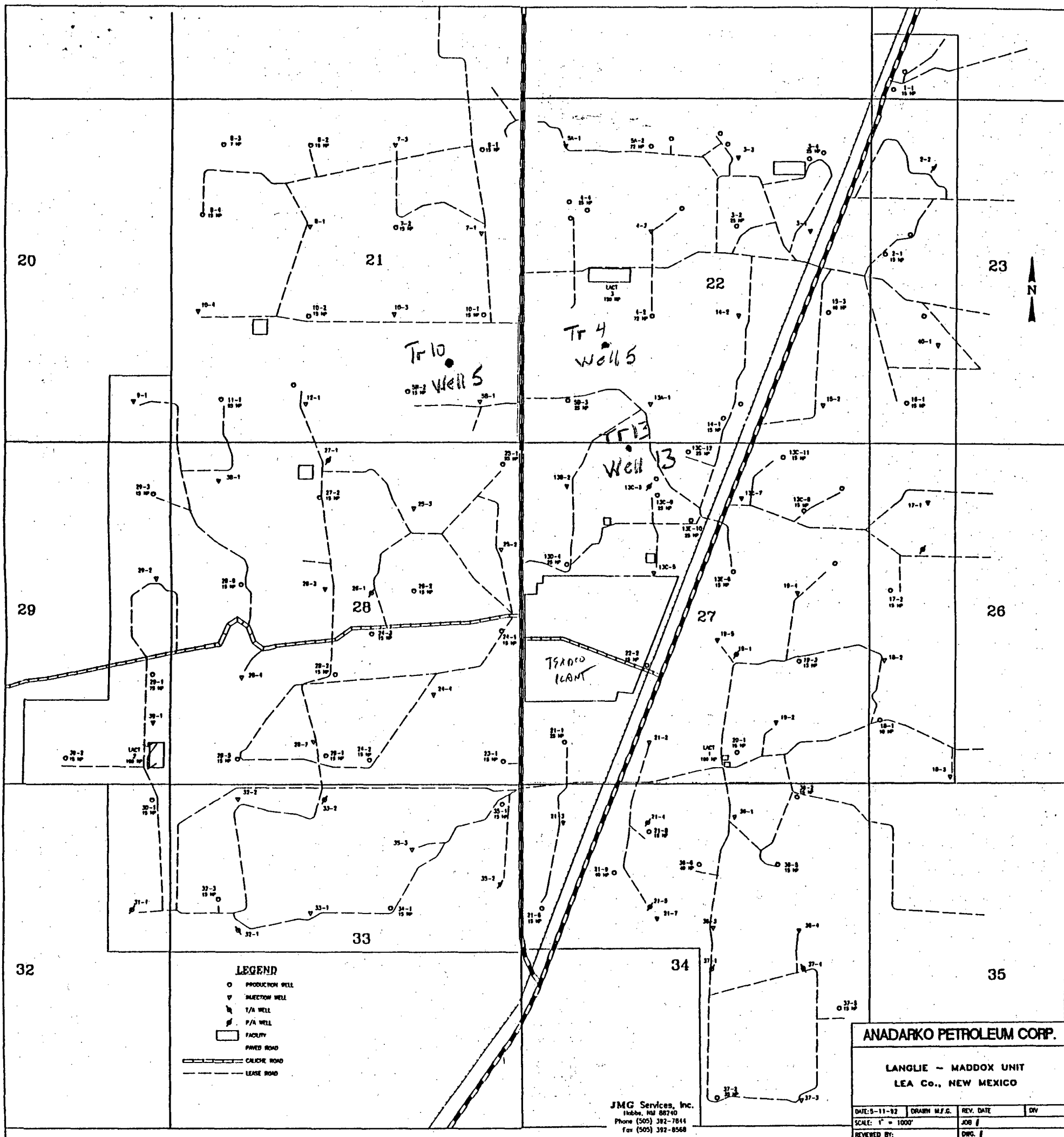
Signature
John C. English
Printed Name
John C. English
Position
Area Supervisor
Company
Anadarko Petroleum
Date
July 27, 1992

SURVEYOR CERTIFICATION

I hereby certify that the well location shown on this plat was plotted from field notes of actual surveys made by me or under my supervision, and that the same is true and correct to the best of my knowledge and belief.

Date Surveyed
June 9, 1992

Signature & Seal of
Professional Surveyor
Ronald E. Edson
Certification No. JOHN C. WEST 676
RONALD E. EDSON 3239



LANGLIE MATTIX PENROSE SAND UNIT AREA

No. 14-08-0001-8607

APPROVED: May 27, 1964

EFFECTIVE: June 1, 1964

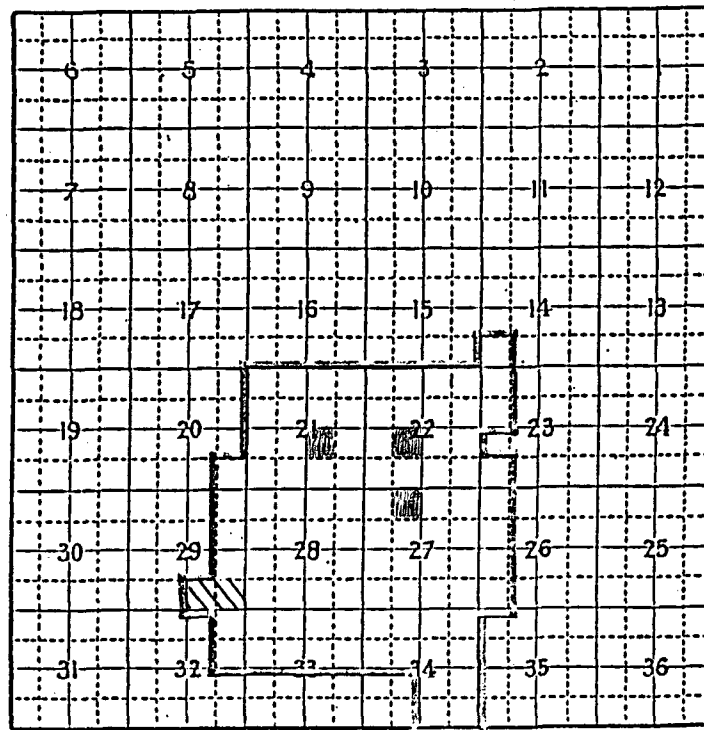
WATERFLOOD

Langlie-Mattix Zone
(Lower 100 Feet of Seven Rivers and all of Queen Formation)

Lea County, New Mexico

Anadarko Production Company, Operator

gulram, inc.
petroleum engineering and government regulation consultants



T
22
S

R 37 E

Federal Lands	280.00 acres
State Lands	720.00 acres
Fee Lands	<u>2,920.00</u> acres
Total	3,920.00 acres



Unit Area Enlarged, effective October 1, 1966

Unit Lands -	Federal	360.00 acres
	State	720.00 acres
	Fee	<u>2,920.00</u> acres
	Total	4,000.00 acres