

**ENRON**  
**Oil & Gas Company**

OIL CONSERVATION DIVISION  
RECEIVED

P. O. Box 2267 Midland, Texas 79702 (915) 686-3600

'92 AUG 28 PM 9 34

August 25, 1992

New Mexico Oil Conservation Commission  
P. O. Box 2088  
Santa Fe, New Mexico 87501

Attn: Mike Stogner

In Re: Brinninstool 21 Federal #1  
Sec 21, T25S, R33E  
Red Hills Wolfcamp  
Lea County, New Mexico

Dear Mr. Stogner:

Please find enclosed three copies of Form 3160-3 and plat which has been submitted to the Bureau of Land Management in Carlsbad, New Mexico to plug back the above-named well from the Morrow to the Wolfcamp. Also enclosed is a map which shows the location of all offset operators, all of which were notified of this request for non-standard location.

Very truly yours,

ENRON OIL & GAS COMPANY



Betty Gildon  
Regulatory Analyst

enclosures

BG

# ENRON

## Oil & Gas Company

P. O. Box 2267 Midland, Texas 79702 (915) 686-3600

August 25, 1992

CERTIFIED MAIL

P 156 316 384  
Hallwood Petroleum, Inc.  
3325 W. Wadley, Ste 200  
Midland, Texas 79707

P 156 316 385  
Mobil Producing Texas & NM  
12450 Greenspoint Dr  
Houston, Texas 77060

P 156 316 386  
Union Oil Company of California  
Box 4551  
Houston, Texas 77210  
P 156 316 387  
Texaco Exploration & Production Inc.  
Box 3109  
Midland, Texas 79702

In Re: Brinninstool 21 Federal #1  
Sec 21, T25S, R33E  
Lea County, New Mexico


Gentlemen:

Enron Oil & Gas Company has applied to the New Mexico Oil Conservation Division in Santa Fe, New Mexico to plug back from the Morrow to the Wolfcamp the unorthodox location for the above-named well as per the attached Application and location plat. If you, as offset operator, have no objection to this special permit, please sign in the space provided below, and return to my attention in the enclosed envelope.

Your early attention is appreciated.

Very truly yours,

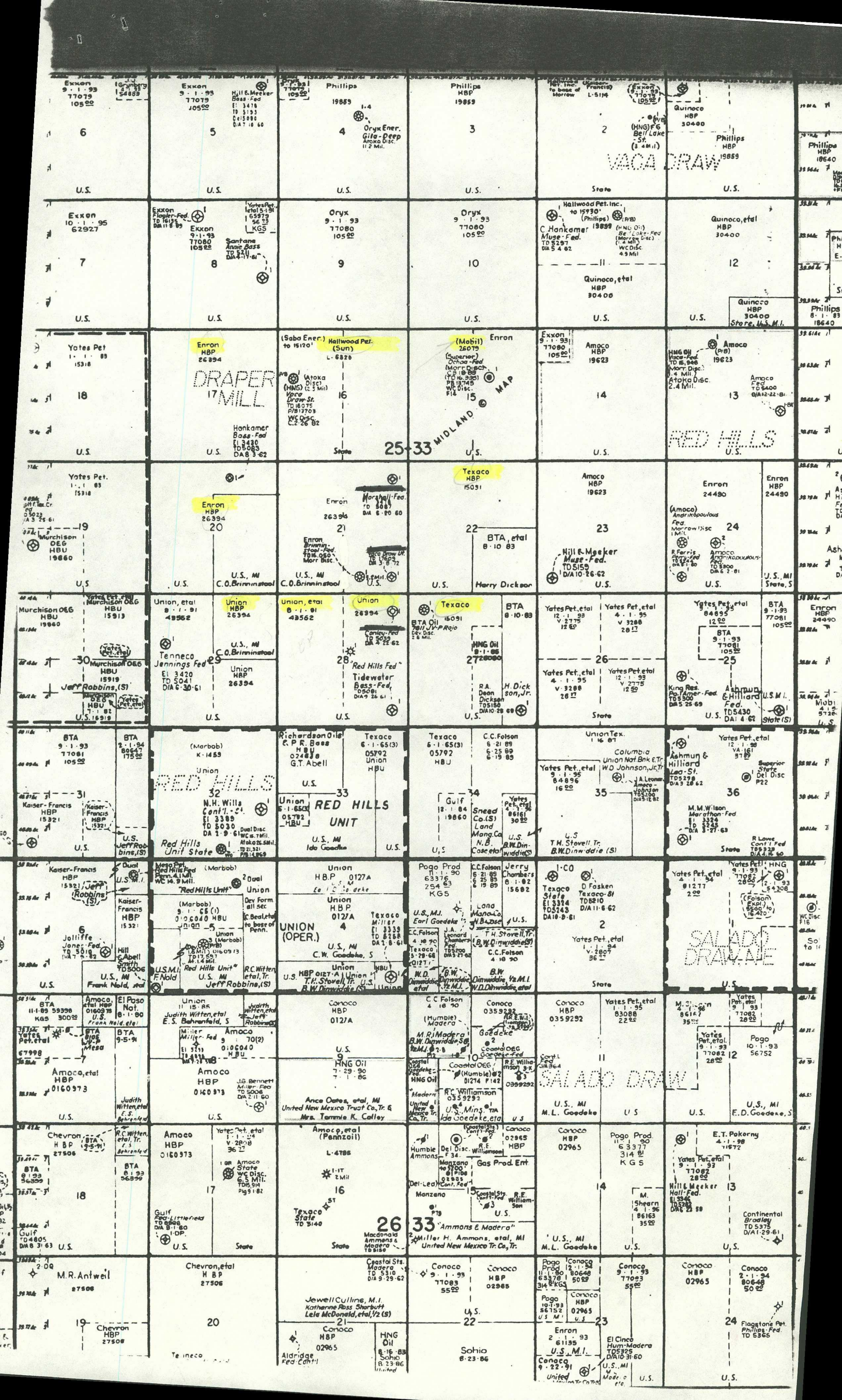
ENRON OIL & GAS COMPANY

  
Betty Gildon  
Regulatory Analyst

BG

DATE: \_\_\_\_\_ COMPANY: \_\_\_\_\_ BY: \_\_\_\_\_







UNITED STATES  
DEPARTMENT OF THE INTERIOR  
BUREAU OF LAND MANAGEMENT

5. LEASE DESIGNATION AND SERIAL NO.

NM 26394

6. IF INDIAN, ALLOTTEE OR TRIBE NAME

7. UNIT AGREEMENT NAME

8. FARM OR LEASE NAME

Brinninstool 21 Federal

9. WELL NO.

1

10. FIELD AND POOL, OR WILDCAT

Red Hills Wolfcamp

11. SEC., T., R., M., OR BLK.  
AND SURVEY OR AREA

Sec. 21, T25S, R33E

12. COUNTY OR PARISH 13. STATE

Lea

NM

1a. TYPE OF WORK

DRILL ☐

DEEPEN ☐

PLUG BACK ☒

b. TYPE OF WELL

OIL  
WELL ☐

GAS  
WELL ☒

OTHER

SINGLE  
ZONE ☒

MULTIPLE  
ZONE ☐

2. NAME OF OPERATOR

Enron Oil & Gas Company

3. ADDRESS OF OPERATOR

P. O. Box 2267, Midland, Texas 79702

4. LOCATION OF WELL (Report location clearly and in accordance with any State requirements.)\*

At surface

660' FSL & 1980' FEL

At proposed prod. zone

660' FSL & 1980' FEL

14. DISTANCE IN MILES AND DIRECTION FROM NEAREST TOWN OR POST OFFICE\*

32 miles west of Jal, NM

15. DISTANCE FROM PROPOSED\*

LOCATION TO NEAREST  
PROPERTY OR LEASE LINE, FT.  
(Also to nearest drilg. unit line, if any)

660'

660'

16. NO. OF ACRES IN LEASE

~~640~~ 640

17. NO. OF ACRES ASSIGNED  
TO THIS WELL

320

18. DISTANCE FROM PROPOSED LOCATION\*  
TO NEAREST WELL, DRILLING, COMPLETED,  
OR APPLIED FOR, ON THIS LEASE, FT.

None

19. PROPOSED DEPTH  
13,666'

20. ROTARY OR CABLE TOOLS

-

21. ELEVATIONS (Show whether DF, RT, GR, etc.)

3364.0' GR

22. APPROX. DATE WORK WILL START\*

When Permitted

23.

PROPOSED CASING AND CEMENTING PROGRAM

SIZE OF HOLE	SIZE OF CASING	WEIGHT PER FOOT	SETTING DEPTH	QUANTITY OF CEMENT
17-1/2	13-3/8	48	640	750 sacks Circulated
12-1/4	9-5/8	40 & 36	4875	2375 sacks Circulated
8-1/2	7	26	13264	1425 sacks
6-1/8	4-1/2" liner	15.10	16047	425 sacks TOL: 12889

To Temporarily Abandon the Morrow and Recomplete in the Wolfcamp.

RU slick line, install 5000 psi lubricator; RIH with sinker bars on slick line & determine PBTD.

Spot sand plug across Morrow perforations as follows:

Mix 1500 gallons 30#/1000 gelled 2% KCL wtr w/1 gal LOSURF & 3 gals Cla-Sta XP

Add 8800# of 20/40 sand & pump

Pump 3400 gals 2% KCL wtr to displace sand to Morrow perms. Do not exceed 8000 psi surface pressure.

Shut down overnight to allow sand plug to fall. Top of sand plug should be  $\pm 14,900'$

IN ABOVE SPACE DESCRIBE PROPOSED PROGRAM: If proposal is to deepen or plug back, give data on present productive zone and proposed new productive zone. If proposal is to drill or deepen directionally, give pertinent data on subsurface locations and measured and true vertical depths. Give blowout preventer program, if any.

(OVER)

24.

SIGNED

*Betty Gildon*

Betty Gildon

TITLE

Regulatory Analyst

DATE

6/16/92

(This space for Federal or State office use)

PERMIT NO.

APPROVAL DATE

APPROVED BY

*Adams Salameh*

TITLE

DATE

6/26/92

CONDITIONS OF APPROVAL, IF ANY:

\*See Instructions On Reverse Side

NOTE: actual volume of sand plug may vary based on PBTD check in Step 1.

Pressure test sand plug to 2000 psi for 15 minutes.

RU perforators, 10,000 psi lubricator, grease equipment.

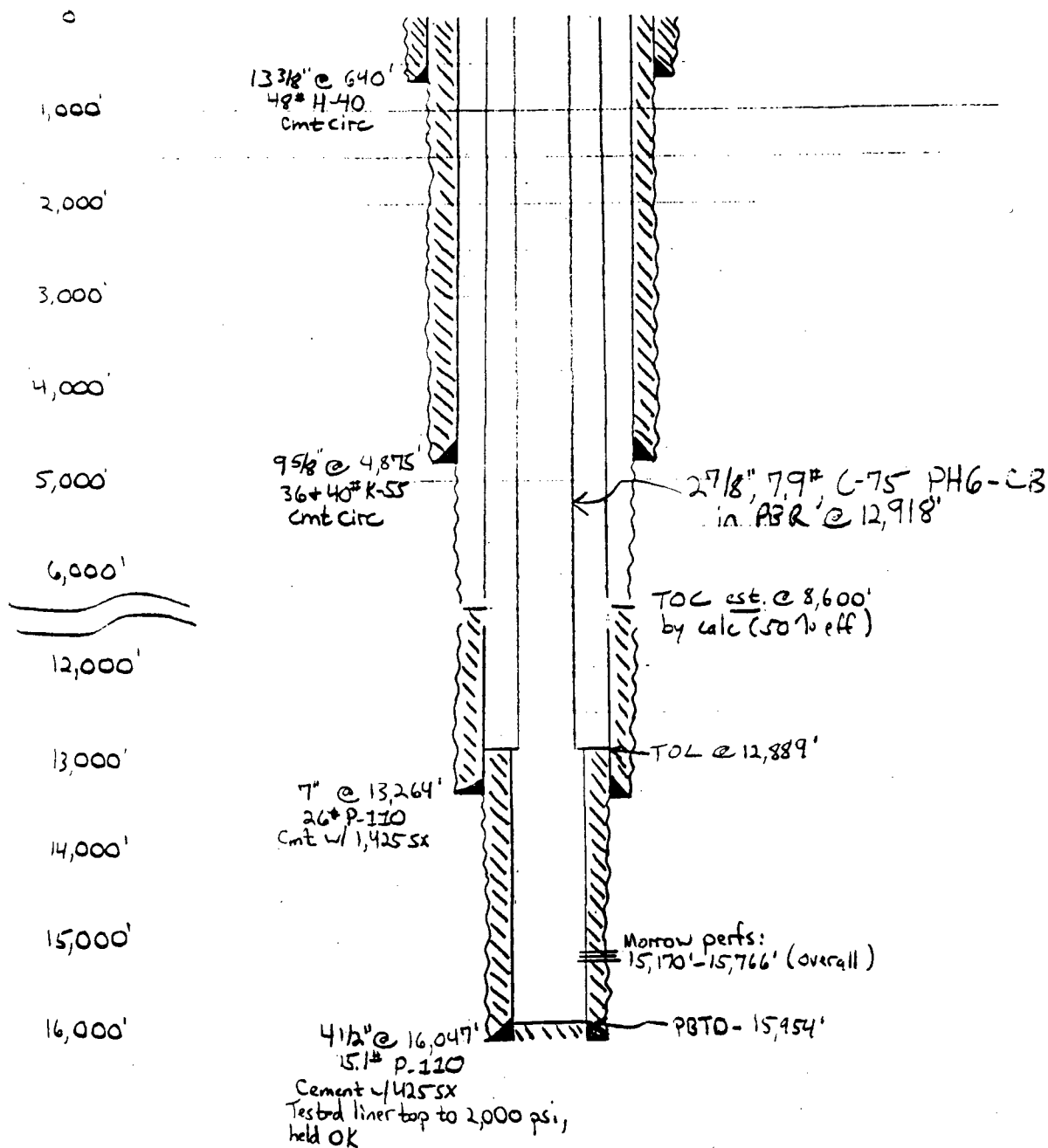
RIH w/2-1/8" semi-expendable strip gun with gamma ray & perforate Wolfcamp interval 13,666'-13,676' with 2 SPF (total 22 holes); check for pressure increase after perforating.

Attempt to flow well; jet if necessary. If possible, flow test well a few days.

If warranted, acidize Wolfcamp with 1500 gals 20% NeFe.

BRINNINSTOOL "21" FED. NO. 1  
WELLBORE DIAGRAM  
Existing

Depth



NEW MEXICO OIL CONSERVATION COMMISSION  
WELL LOCATION AND ACREAGE DEDICATION PLAT

Form C-102  
Supersedes C-128  
Effective 1-1-85

All distances must be from the outer boundaries of the Section

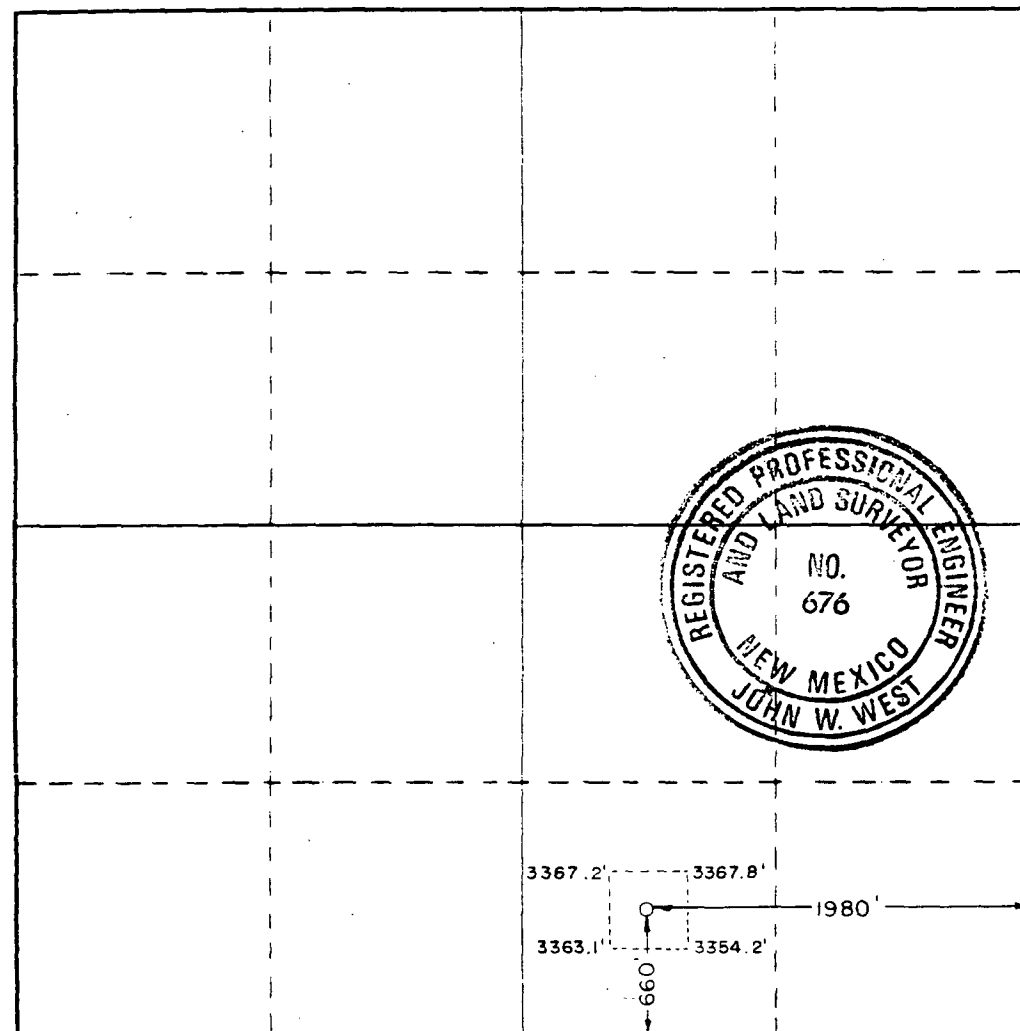
Operator <b>ENRON OIL &amp; GAS Company</b>		Lease <b>BRINSTOOL 21 FEDERAL</b>		Well No. <b>1</b>
Section <b>0</b>	Section <b>21</b>	Township <b>25 SOUTH</b>	Range <b>33 EAST</b>	County <b>LEA</b>
Actual Footage Location of Well: <b>660</b> feet from the <b>SOUTH</b> line and <b>1980</b> feet from the <b>EAST</b> line				
Ground Level Elev. <b>3364.0</b>	Producing Formation <b>Wolfcamp</b>	Pool <b>Red Hills</b>	Dedicated Acreage: <b>640</b> Acres	

1. Outline the acreage dedicated to the subject well by colored pencil or hachure marks on the plat below.
2. If more than one lease is dedicated to the well, outline each and identify the ownership thereof (both as to working interest and royalty).
3. If more than one lease of different ownership is dedicated to the well, have the interests of all owners been consolidated by communitization, unitization, force-pooling, etc?

☐ Yes ☐ No If answer is "yes," type of consolidation \_\_\_\_\_

If answer is "no," list the owners and tract descriptions which have actually been consolidated. (Use reverse side of this form if necessary.) \_\_\_\_\_

No allowable will be assigned to the well until all interests have been consolidated (by communitization, unitization, forced-pooling, or otherwise) or until a non-standard unit, eliminating such interests, has been approved by the Commission.



CERTIFICATION

I hereby certify that the information contained herein is true and complete to the best of my knowledge and belief.

*Betty Gildon*  
Name  
**Betty Gildon**

Position  
**Regulatory Analyst**

Company  
**Enron Oil & Gas Company**

Date  
**6/16/92**

I hereby certify that the well location shown on this plat was plotted from field notes of actual surveys made by me or under my supervision, and that the same is true and correct to the best of my knowledge and belief.

Date Surveyed  
**AUGUST 19, 1987**

Registered Professional Engineer and/or Land Surveyor

*John W. West*  
Certificate No. **JOHN W. WEST, 676**  
**RONALD J. EIDSON, 3239**

UNITED STATES  
DEPARTMENT OF THE INTERIOR  
BUREAU OF LAND MANAGEMENT

APPLICATION FOR PERMIT TO DRILL, DEEPEN, OR PLUG BACK

1a. TYPE OF WORK

DRILL ☐

DEEPEN ☐

PLUG BACK ☒

b. TYPE OF WELL

OIL  
WELL ☐

GAS  
WELL ☒

OTHER

SINGLE  
ZONE ☒

MULTIPLE  
ZONE ☐

2. NAME OF OPERATOR

Enron Oil & Gas Company

3. ADDRESS OF OPERATOR

P. O. Box 2267, Midland, Texas 79702

4. LOCATION OF WELL (Report location clearly and in accordance with any State requirements.)

At surface

660' FSL & 1980' FEL

At proposed prod. zone

660' FSL & 1980' FEL

14. DISTANCE IN MILES AND DIRECTION FROM NEAREST TOWN OR POST OFFICE\*

32 miles west of Jal, NM

15. DISTANCE FROM PROPOSED\*

LOCATION TO NEAREST  
PROPERTY OR LEASE LINE, FT.  
(Also to nearest drilg. unit line, if any)

660'

660'

16. NO. OF ACRES IN LEASE

~~300~~ 640

17. NO. OF ACRES ASSIGNED  
TO THIS WELL

320

18. DISTANCE FROM PROPOSED LOCATION\*  
TO NEAREST WELL, DRILLING, COMPLETED,  
OR APPLIED FOR, ON THIS LEASE, FT.

None

19. PROPOSED DEPTH  
13,666'

20. ROTARY OR CABLE TOOLS

-

21. ELEVATIONS (Show whether DF, RT, GR, etc.)

3364.0' GR

22. APPROX. DATE WORK WILL START\*

When Permitted

23. PROPOSED CASING AND CEMENTING PROGRAM

SIZE OF HOLE	SIZE OF CASING	WEIGHT PER FOOT	SETTING DEPTH	QUANTITY OF CEMENT
17-1/2	13-3/8	48	640	750 sacks Circulated
12-1/4	9-5/8	40 & 36	4875	2375 sacks Circulated
8-1/2	7	26	13264	1425 sacks
6-1/8	4-1/2" liner	15.10	16047	425 sacks TOL: 12889

To Temporarily Abandon the Morrow and Recomplete in the Wolfcamp.

RU slick line, install 5000 psi lubricator; RIH with sinker bars on slick line & determine PBTD.

Spot sand plug across Morrow perforations as follows:

Mix 1500 gallons 30#/1000 gelled 2% KCL wtr w/1 gal LOSURF & 3 gals Cla-Sta XP

Add 8800# of 20/40 sand & pump

Pump 3400 gals 2% KCL wtr to displace sand to Morrow perfs. Do not exceed 8000 psi surface pressure.

Shut down overnight to allow sand plug to fall. Top of sand plug should be  $\pm 14,900'$

IN ABOVE SPACE DESCRIBE PROPOSED PROGRAM: If proposal is to deepen or plug back, give data on present productive zone and proposed new productive zone. If proposal is to drill or deepen directionally, give pertinent data on subsurface locations and measured and true vertical depths. Give blowout preventer program, if any.

(OVER)

24.

SIGNED

*Betty Gildon*

Betty Gildon

TITLE

Regulatory Analyst

DATE

6/16/92

(This space for Federal or State office use)

PERMIT NO.

APPROVAL DATE

APPROVED BY

*Adam Salameh*

TITLE

DATE

6/26/92

CONDITIONS OF APPROVAL, IF ANY:

\*See Instructions On Reverse Side

Title 18 U.S.C. Section 1001, makes it a crime for any person knowingly and willfully to make to any department or agency of the United States any false, fictitious or fraudulent statements or representations as to any matter within its jurisdiction.



NOTE: actual volume of sand plug may vary based on PBTD check in Step 1.

Pressure test sand plug to 2000 psi for 15 minutes.

RU perforators, 10,000 psi lubricator, grease equipment.

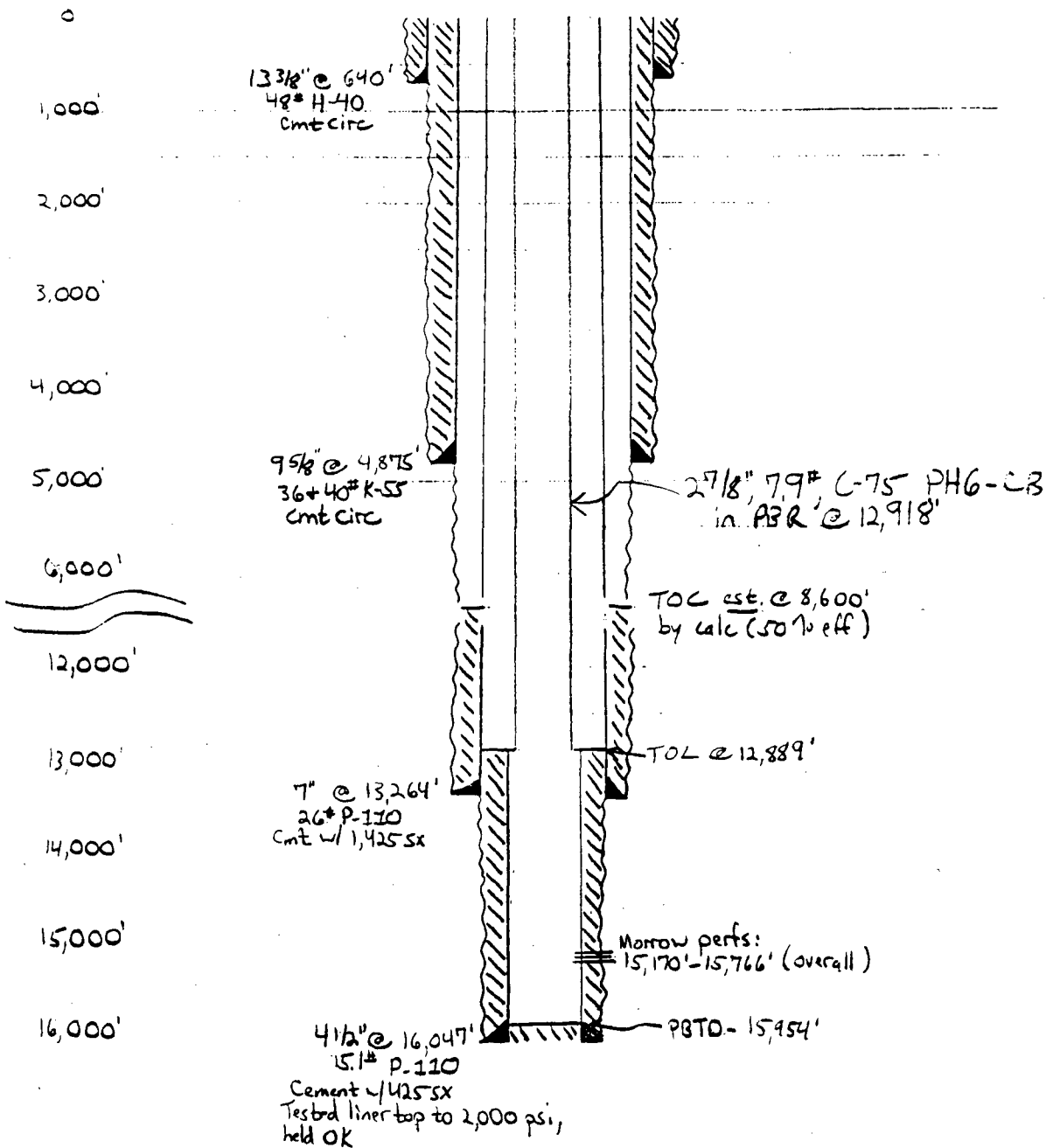
RIH w/2-1/8" semi-expendable strip gun with gamma ray & perforate Wolfcamp interval 13,666'-13,676' with 2 SPF (total 22 holes); check for pressure increase after perforating.

Attempt to flow well; jet if necessary. If possible, flow test well a few days.

If warranted, acidize Wolfcamp with 1500 gals 20% NeFe.

BRINNINSTOOL "21" FED. NO. 1  
WELLBORE DIAGRAM  
Existing

Depth



NEW MEXICO OIL CONSERVATION COMMISSION  
WELL LOCATION AND ACREAGE DEDICATION PLAT

Form C-102  
Supersedes C-128  
Effective 1-1-85

All distances must be from the outer boundaries of the Section

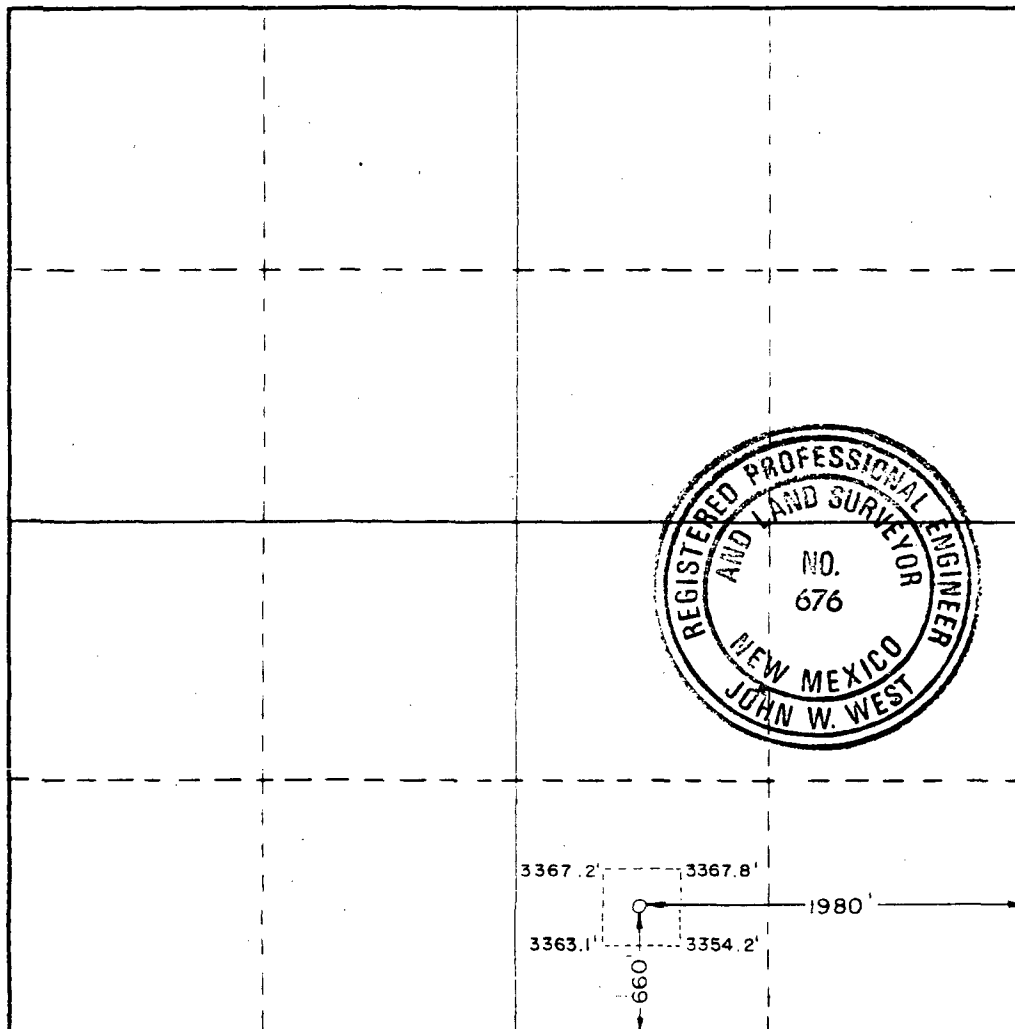
Operator <b>ENRON OIL &amp; GAS COMPANY</b>		Lease <b>BRININSTOOL 21 FEDERAL</b>		Well No. <b>1</b>
Tract Letter <b>0</b>	Section <b>21</b>	Township <b>25 SOUTH</b>	Range <b>33 EAST</b>	County <b>LEA</b>
Actual Footage Location of Well: <b>660</b> feet from the <b>SOUTH</b> line and <b>1980</b> feet from the <b>EAST</b> line				
Ground Level Elev. <b>3364.0</b>	Producing Formation <b>Wolfcamp</b>	Pool <b>Red Hills</b>	Dedicated Acreage: <b>640</b> Acres	

1. Outline the acreage dedicated to the subject well by colored pencil or hatchure marks on the plat below.
2. If more than one lease is dedicated to the well, outline each and identify the ownership thereof (both as to working interest and royalty).
3. If more than one lease of different ownership is dedicated to the well, have the interests of all owners been consolidated by communitization, unitization, force-pooling, etc?

☐ Yes ☐ No If answer is "yes," type of consolidation: \_\_\_\_\_

If answer is "no," list the owners and tract descriptions which have actually been consolidated. (Use reverse side of this form if necessary.) \_\_\_\_\_

No allowable will be assigned to the well until all interests have been consolidated (by communitization, unitization, forced-pooling, or otherwise) or until a non-standard unit, eliminating such interests, has been approved by the Commission.



CERTIFICATION

I hereby certify that the information contained herein is true and complete to the best of my knowledge and belief.

*Betty Gildon*

Name

Betty Gildon

Position

Regulatory Analyst

Company

Enron Oil & Gas Company

Date

6/16/92

I hereby certify that the well location shown on this plat was plotted from field notes of actual surveys made by me or under my supervision, and that the same is true and correct to the best of my knowledge and belief.

Date Surveyed

AUGUST 19, 1987

Registered Professional Engineer and/or Land Surveyor

*John W. West*

Certificate No. JOHN W. WEST,

676

RONALD J. EIDSON, 3239

UNITED STATES  
DEPARTMENT OF THE INTERIOR  
BUREAU OF LAND MANAGEMENT

APPLICATION FOR PERMIT TO DRILL, DEEPEN, OR PLUG BACK

1a. TYPE OF WORK

DRILL ☐

DEEPEN ☐

PLUG BACK ☒

b. TYPE OF WELL

OIL  
WELL ☐

GAS  
WELL ☒

OTHER

SINGLE  
ZONE ☒

MULTIPLE  
ZONE ☐

2. NAME OF OPERATOR

Enron Oil & Gas Company

3. ADDRESS OF OPERATOR

P. O. Box 2267, Midland, Texas 79702

4. LOCATION OF WELL (Report location clearly and in accordance with any State requirements.)\*

At surface

660' FSL & 1980' FEL

At proposed prod. zone

660' FSL & 1980' FEL

14. DISTANCE IN MILES AND DIRECTION FROM NEAREST TOWN OR POST OFFICE\*

32 miles west of Jal, NM

15. DISTANCE FROM PROPOSED\*

LOCATION TO NEAREST  
PROPERTY OR LEASE LINE, FT.  
(Also to nearest drlg. unit line, if any)

660'

660'

18. DISTANCE FROM PROPOSED LOCATION\*  
TO NEAREST WELL, DRILLING, COMPLETED,  
OR APPLIED FOR, ON THIS LEASE, FT.

None

16. NO. OF ACRES IN LEASE

~~300~~ 640

19. PROPOSED DEPTH

13,666'

17. NO. OF ACRES ASSIGNED  
TO THIS WELL

320

20. ROTARY OR CABLE TOOLS

-

21. ELEVATIONS (Show whether DF, RT, GR, etc.)

3364.0' GR

22. APPROX. DATE WORK WILL START\*

When Permitted

23.

PROPOSED CASING AND CEMENTING PROGRAM

SIZE OF HOLE	SIZE OF CASING	WEIGHT PER FOOT	SETTING DEPTH	QUANTITY OF CEMENT
17-1/2	13-3/8	48	640	750 sacks Circulated
12-1/4	9-5/8	40 & 36	4875	2375 sacks Circulated
8-1/2	7	26	13264	1425 sacks
6-1/8	4-1/2" liner	15.10	16047	425 sacks TOL: 12889

To Temporarily Abandon the Morrow and Recomplete in the Wolfcamp.

RU slick line, install 5000 psi lubricator; RIH with sinker bars on slick line & determine PBTD.

Spot sand plug across Morrow perforations as follows:

Mix 1500 gallons 30#/1000 gelled 2% KCL wtr w/1 gal LOSURF & 3 gals Cla-Sta XP

Add 8800# of 20/40 sand & pump

Pump 3400 gals 2% KCL wtr to displace sand to Morrow perfs. Do not exceed 8000 psi surface pressure.

Shut down overnight to allow sand plug to fall. Top of sand plug should be  $\pm$  14,900'

IN ABOVE SPACE DESCRIBE PROPOSED PROGRAM: If proposal is to deepen or plug back, give data on present productive zone and proposed new productive zone. If proposal is to drill or deepen directionally, give pertinent data on subsurface locations and measured and true vertical depths. Give blowout preventer program, if any.

(OVER)

24.

SIGNED

*Betty Gildon*

Betty Gildon

TITLE

Regulatory Analyst

DATE

6/16/92

(This space for Federal or State office use)

PERMIT NO.

APPROVAL DATE

APPROVED BY

*Adam Selamish*

TITLE

DATE

6/26/92

CONDITIONS OF APPROVAL, IF ANY:

\*See Instructions On Reverse Side

Title 18 U.S.C. Section 1001, makes it a crime for any person knowingly and willfully to make to any department or agency of the United States any false, fictitious or fraudulent statements or representations as to any matter within its jurisdiction.



NOTE: actual volume of sand plug may vary based on PBTD check in Step 1.

Pressure test sand plug to 2000 psi for 15 minutes.

RU perforators, 10,000 psi lubricator, grease equipment.

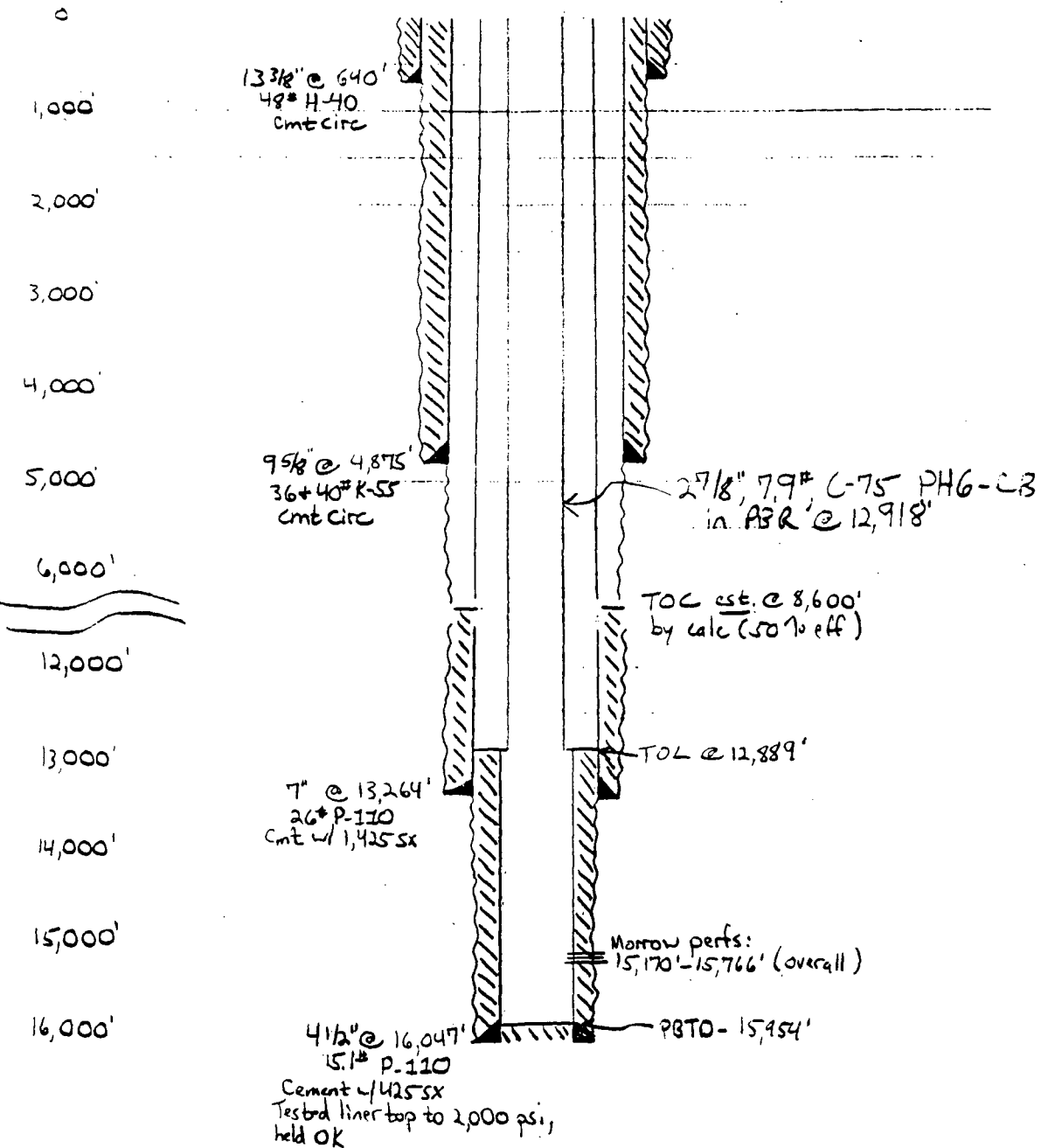
RIH w/2-1/8" semi-expendable strip gun with gamma ray & perforate Wolfcamp interval 13,666'-13,676' with 2 SPF (total 22 holes); check for pressure increase after perforating.

Attempt to flow well; jet if necessary. If possible, flow test well a few days.

If warranted, acidize Wolfcamp with 1500 gals 20% NeFe.

BRINNINSTOOL "21" FED. NO. 1  
WELLBORE DIAGRAM  
Existing

Depth



NEW MEXICO OIL CONSERVATION COMMISSION  
WELL LOCATION AND ACREAGE DEDICATION PLAT

Form C-102  
Supersedes C-128  
Effective 1-1-65

All distances must be from the outer boundaries of the Section

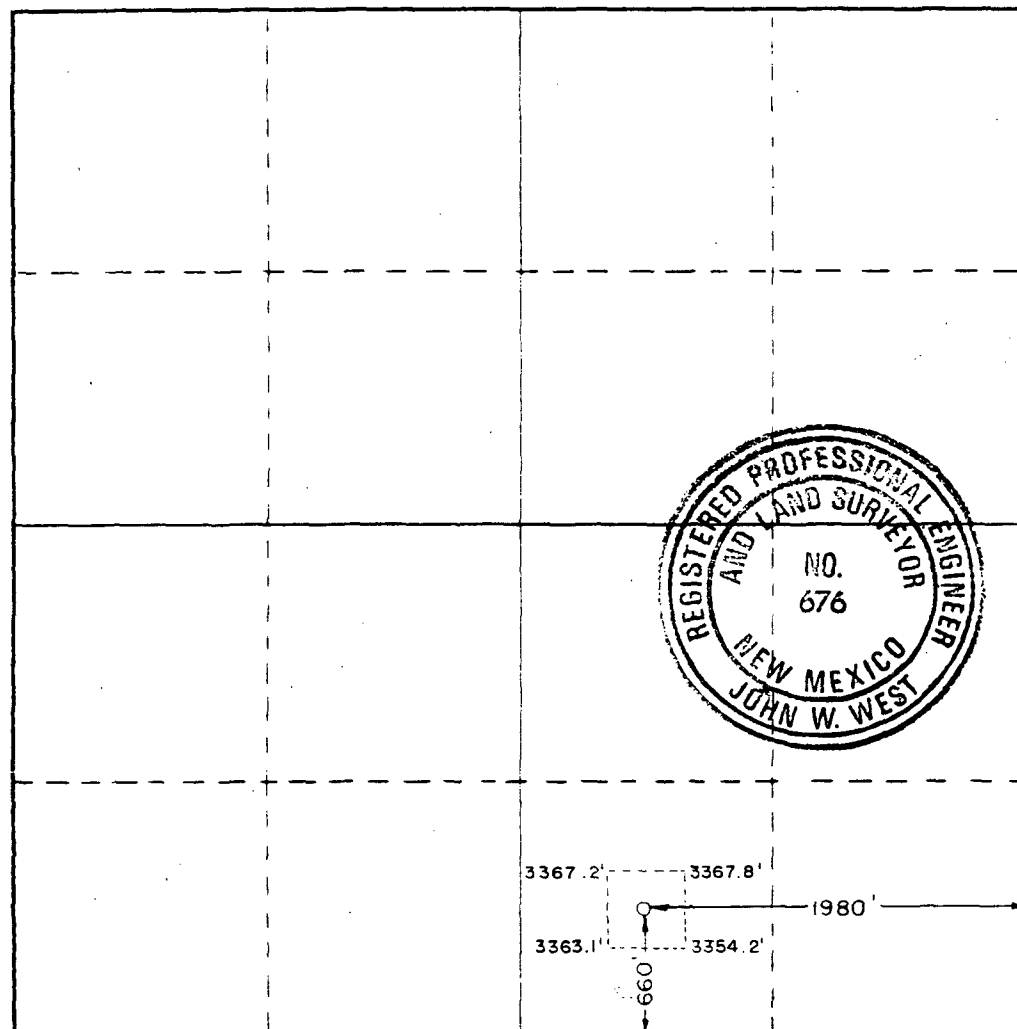
Operator <b>ENRON OIL &amp; GAS Company</b>		Lease <b>BRININSTOOL 21 FEDERAL</b>		Well No. <b>1</b>
Tract Letter <b>0</b>	Section <b>21</b>	Township <b>25 SOUTH</b>	Range <b>33 EAST</b>	County <b>LEA</b>
Actual Footage Location of well: 660 feet from the <b>SOUTH</b> line and 1980 feet from the <b>EAST</b> line				
Ground Level Elev. <b>3364.0</b>	Producing Formation <b>Wolfcamp</b>	Pool <b>Red Hills</b>	Dedicated Acreage: <b>640</b> Acres	

- Outline the acreage dedicated to the subject well by colored pencil or hatchure marks on the plat below.
- If more than one lease is dedicated to the well, outline each and identify the ownership thereof (both as to working interest and royalty).
- If more than one lease of different ownership is dedicated to the well, have the interests of all owners been consolidated by communitization, unitization, force-pooling, etc?

☐ Yes ☐ No If answer is "yes," type of consolidation \_\_\_\_\_

If answer is "no," list the owners and tract descriptions which have actually been consolidated. (Use reverse side of this form if necessary.) \_\_\_\_\_

No allowable will be assigned to the well until all interests have been consolidated (by communitization, unitization, forced-pooling, or otherwise) or until a non-standard unit, eliminating such interests, has been approved by the Commission.



CERTIFICATION

I hereby certify that the information contained herein is true and complete to the best of my knowledge and belief.

*Betty Gildon*

Name

Betty Gildon

Position

Regulatory Analyst

Company

Enron Oil & Gas Company

Date

6/16/92

I hereby certify that the well location shown on this plat was plotted from field notes of actual surveys made by me or under my supervision, and that the same is true and correct to the best of my knowledge and belief.

Date Surveyed

AUGUST 19, 1987

Registered Professional Engineer and/or Land Surveyor

*John W. West*

Certificate No. JOHN W. WEST,

676

RONALD J. EIDSON,

3239



STATE OF NEW MEXICO  
ENERGY, MINERALS AND NATURAL RESOURCES DEPARTMENT  
OIL CONSERVATION DIVISION  
HOBBS DISTRICT OFFICE

8-27-92

BRUCE KING  
GOVERNOR

POST OFFICE BOX 1980  
HOBBS, NEW MEXICO 88241-1980  
(505) 393-6161

OIL CONSERVATION DIVISION  
P. O. BOX 2088  
SANTA FE, NEW MEXICO 87501

RE: Proposed:

MC \_\_\_\_\_  
DHC \_\_\_\_\_  
NSL ☒ \_\_\_\_\_  
NSP \_\_\_\_\_  
SWD \_\_\_\_\_  
WFX \_\_\_\_\_  
PMX \_\_\_\_\_

Gentlemen:

I have examined the application for the:

*Enron Oil & Gas Co. Brenningston 21 Federal #1-0 21-25-33*  
Operator Lease & Well No. Unit S-T-R

and my recommendations are as follows:

*OK*

Yours very truly,

*Jerry Sexton*  
Jerry Sexton  
Supervisor, District 1

/ed



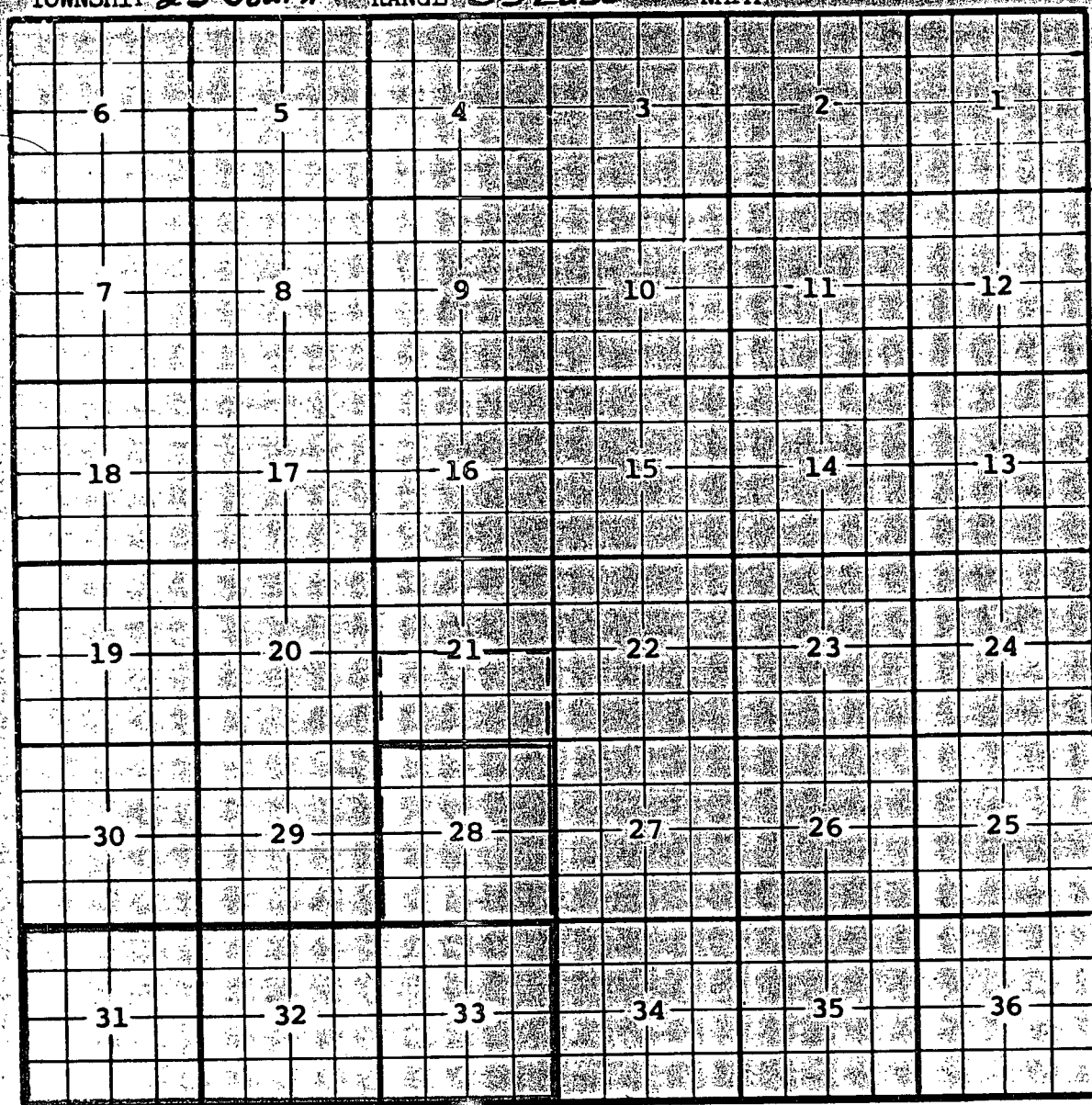
COUNTY Lea

POOL Red Hills - Wolfcamp Gas

TOWNSHIP 25 South

RANGE 33 East

NMPM



Description: All Sec. 31, 32 & 33 (R-2826, 12-7-64)

Ext: All Sec. 28 (R-8041, 10-3-85)