

Rec: 2/1/93

SDX RESOURCES, INC.

P.O. BOX 5061
MIDLAND, TEXAS 79704
(915) 685-1761

N.M.O.C.D.
P.O. Box 2088
Santa Fe, N.M. 87504-2088
Attn. Mr. Stogner

Mr. Stogner,

Accompanying this letter are applications for permits to drill on our East Millman Unit and our State B N lease. They are for the East Millman #192-196 & #198-201 and the State B N #6. You should already have applications for the East Millman #191 & #197 and the State B N #5 & #7. This should complete this part of our project. Thanks for your prompt attention.

Sincerely,



Chuck Morgan, P.E.

Submit to Appropriate
District Office
State Lease - 6 copies
Fee Lease - 5 copies

State of New Mexico
Energy, Minerals and Natural Resources Department

Form C-101
Revised 1-1-89

OIL CONSERVATION DIVISION

P.O. Box 2088
Santa Fe, New Mexico 87504-2088

DISTRICT I
P.O. Box 1980, Hobbs, NM 88240

DISTRICT II
P.O. Drawer DD, Artesia, NM 88210

DISTRICT III
1000 Rio Brazos Rd., Aztec, NM 87410

API NO. (assigned by OCD on New Wells)

5. Indicate Type of Lease

STATE ☒

FEE ☐

6. State Oil & Gas Lease No.

648

APPLICATION FOR PERMIT TO DRILL, DEEPEN, OR PLUG BACK

1a. Type of Work:

DRILL ☒

RE-ENTER ☐

DEEPEN ☐

PLUG BACK ☐

b. Type of Well:

OIL
WELL ☒

GAS
WELL ☐

OTHER ☐

SINGLE
ZONE ☐

MULTIPLE
ZONE ☒

7. Lease Name or Unit Agreement Name

East Millman

2. Name of Operator

SDX RESOURCES, INC.

8. Well No.

192

3. Address of Operator

P.O. BOX 5061 Midland, TX. 79704-5061

9. Pool name or Wildcat

E. Millman Q-G-SA

4. Well Location

Unit Letter N : 1330 Feet From The West Line and 10 Feet From The South Line

Section 14

Township 19-S

Range 28-E

NMPM Eddy

County

10. Proposed Depth
2600

11. Formation
Grayburg

12. Rotary or C.T.
Rot

13. Elevations (Show whether DF, RT, GR, etc.)
3424 GR

14. Kind & Status Plug Bond
Blanket

15. Drilling Contractor
Capstar

16. Approx. Date Work will start
Feb. 01

17. PROPOSED CASING AND CEMENT PROGRAM

SIZE OF HOLE	SIZE OF CASING	WEIGHT PER FOOT	SETTING DEPTH	SACKS OF CEMENT	EST. TOP
12-1/4"	8-5/8"	24#	350' +	300	surf
7-7/8"	5-1/2"	15.50#	2600'	500	surf

Plan to drill a 12-1/4" hole to approx. 350'; set 8-5/8" surface casing. Circulate "C" cement. Drill 7-7/8" hole to TD. Run open hole logs (LDT-CNL-GR & DLL). Run 5-1/2" casing and circulate 50/50 POZ "C" cement. Perforate the Grayburg-Queen and stimulate as necessary for optimum production.

Mud Program: Fresh water mud 0'-350'
Salt water mud 350'-TD.

IN ABOVE SPACE DESCRIBE PROPOSED PROGRAM: IF PROPOSAL IS TO DEEPEN OR PLUG BACK, GIVE DATA ON PRESENT PRODUCTIVE ZONE AND PROPOSED NEW PRODUCTIVE ZONE. GIVE BLOWOUT PREVENTER PROGRAM, IF ANY.

I hereby certify that the information above is true and complete to the best of my knowledge and belief.

SIGNATURE

Chuck Morgan

TITLE

Engr.

DATE

1/29/93

TYPE OR PRINT NAME

Chuck Morgan

TELEPHONE NO.

748-9814

(This space for State Use)

APPROVED BY

TITLE

DATE

CONDITIONS OF APPROVAL, IF ANY:

Submit to Appropriate
District Office
State Lease - 4 copies
Fee Lease - 3 copies

State of New Mexico
Energy, Minerals and Natural Resources Department

Form C-102
Revised 1-1-89

OIL CONSERVATION DIVISION

DISTRICT I
P.O. Box 1980, Hobbs, NM 88240

P.O. Box 2088

Santa Fe, New Mexico 87504-2088

DISTRICT II
P.O. Drawer DD, Artesia, NM 88210

DISTRICT III
1000 Rio Brazos Rd., Aztec, NM 87410

WELL LOCATION AND ACREAGE DEDICATION PLAT

All Distances must be from the outer boundaries of the section

Operator SDX RESOURCES, INC.			Lease East Millman Unit		Well No. 192
Unit Letter N	Section 14	Township 19 South	Range 28 East	County NMPM Eddy County, N.M.	
Actual Footage Location of Well: 10 feet from the South line and 1330 feet from the West line					
Ground level Elev. 3424	Producing Formation Q-Gb.		Pool East Millman Q-G-SA.	Dedicated Acreage: 40 Acres	

- Outline the acreage dedicated to the subject well by colored pencil or hachure marks on the plat below.
- If more than one lease is dedicated to the well, outline each and identify the ownership thereof (both as to working interest and royalty).
- If more than one lease of different ownership is dedicated to the well, have the interest of all owners been consolidated by communitization, unitization, force-pooling, etc.?
☐ Yes ☐ No If answer is "yes" type of consolidation _____
If answer is "no" list the owners and tract descriptions which have actually been consolidated. (Use reverse side of this form if necessary).
No allowable will be assigned to the well until all interests have been consolidated (by communitization, unitization, forced-pooling, or otherwise) or until a non-standard unit, eliminating such interest, has been approved by the Division.

OPERATOR CERTIFICATION

I hereby certify that the information contained herein is true and complete to the best of my knowledge and belief.

Signature *Chuck Morgan*

Printed Name **Chuck Morgan**

Position **Engr.**

Company **SDX Resources**

Date **1/29/93**

SURVEYOR CERTIFICATION

I hereby certify that the well location shown on this plat was plotted from field notes of actual surveys made by me or under my supervision, and that the same is true and correct to the best of my knowledge and belief.

Date Surveyed

JANUARY 27, 1993

Signature & Seal of Professional Surveyor

Certificate No. **5412**
NM PE&PS NO. **5412**

Submit to Appropriate
District Office
State Lease - 6 copies
Fee Lease - 5 copies

State of New Mexico
Energy, Minerals and Natural Resources Department

Form C-101
Revised 1-1-89

OIL CONSERVATION DIVISION

P.O. Box 2088
Santa Fe, New Mexico 87504-2088

DISTRICT I
P.O. Box 1980, Hobbs, NM 88240

DISTRICT II
P.O. Drawer DD, Artesia, NM 88210

DISTRICT III
1000 Rio Brazos Rd., Aztec, NM 87410

API NO. (assigned by OCD on New Wells)

5. Indicate Type of Lease

STATE ☒ FEE ☐

6. State Oil & Gas Lease No.

648

APPLICATION FOR PERMIT TO DRILL, DEEPEN, OR PLUG BACK

1a. Type of Work:

DRILL ☒

RE-ENTER ☐

DEEPEN ☐

PLUG BACK ☐

b. Type of Well:

OIL
WELL ☒

GAS
WELL ☐

OTHER ☐

SINGLE
ZONE ☐

MULTIPLE
ZONE ☒

7. Lease Name or Unit Agreement Name

East Millman

2. Name of Operator

SDX RESOURCES, INC.

8. Well No.

193

3. Address of Operator

P.O. BOX 5061 Midland, TX. 79704-5061

9. Pool name or Wildcat

E. Millman Q-G-SA

4. Well Location

Unit Letter M : 51 Feet From The West Line and 1294 Feet From The South Line

Section 14

Township 19-S

Range 28-E

NMPM Eddy

County

10. Proposed Depth
2600

11. Formation
Grayburg

12. Rotary or C.T.
Rot

13. Elevations (Show whether DF, RT, GR, etc.)
3446 GR

14. Kind & Status Plug. Bond
Blanket

15. Drilling Contractor
Capstar

16. Approx. Date Work will start
Feb. 01

17.

PROPOSED CASING AND CEMENT PROGRAM

SIZE OF HOLE	SIZE OF CASING	WEIGHT PER FOOT	SETTING DEPTH	SACKS OF CEMENT	EST. TOP
12-1/4"	8-5/8"	24#	350' +	300	surf
7-7/8"	5-1/2"	15.50#	2600'	500	surf

Plan to drill a 12-1/4" hole to approx. 350'; set 8-5/8" surface casing. Circulate "C" cement. Drill 7-7/8" hole to TD. Run open hole logs (LDT-CNL-GR & DLL). Run 5-1/2" casing and circulate 50/50 POZ "C" cement. Perforate the Grayburg-Queen and stimulate as necessary for optimum production.

Mud Program: Fresh water mud 0'-350'
Salt water mud 350'-TD.

IN ABOVE SPACE DESCRIBE PROPOSED PROGRAM: IF PROPOSAL IS TO DEEPEN OR PLUG BACK, GIVE DATA ON PRESENT PRODUCTIVE ZONE AND PROPOSED NEW PRODUCTIVE ZONE. GIVE BLOWOUT PREVENTER PROGRAM, IF ANY.

I hereby certify that the information above is true and complete to the best of my knowledge and belief.

SIGNATURE

Chuck Morgan

TITLE

Engr.

DATE

1/29/93

TYPE OR PRINT NAME

Chuck Morgan

TELEPHONE NO.

748-9814

(This space for State Use)

APPROVED BY

TITLE

DATE

CONDITIONS OF APPROVAL, IF ANY:

Submit to Appropriate
District Office
State Lease - 4 copies
Fee Lease - 3 copies

State of New Mexico
Energy, Minerals and Natural Resources Department

Form C-102
Revised 1-1-89

OIL CONSERVATION DIVISION

P.O. Box 2088
Santa Fe, New Mexico 87504-2088

DISTRICT I
P.O. Box 1980, Hobbs, NM 88240

DISTRICT II
P.O. Drawer DD, Artesia, NM 88210

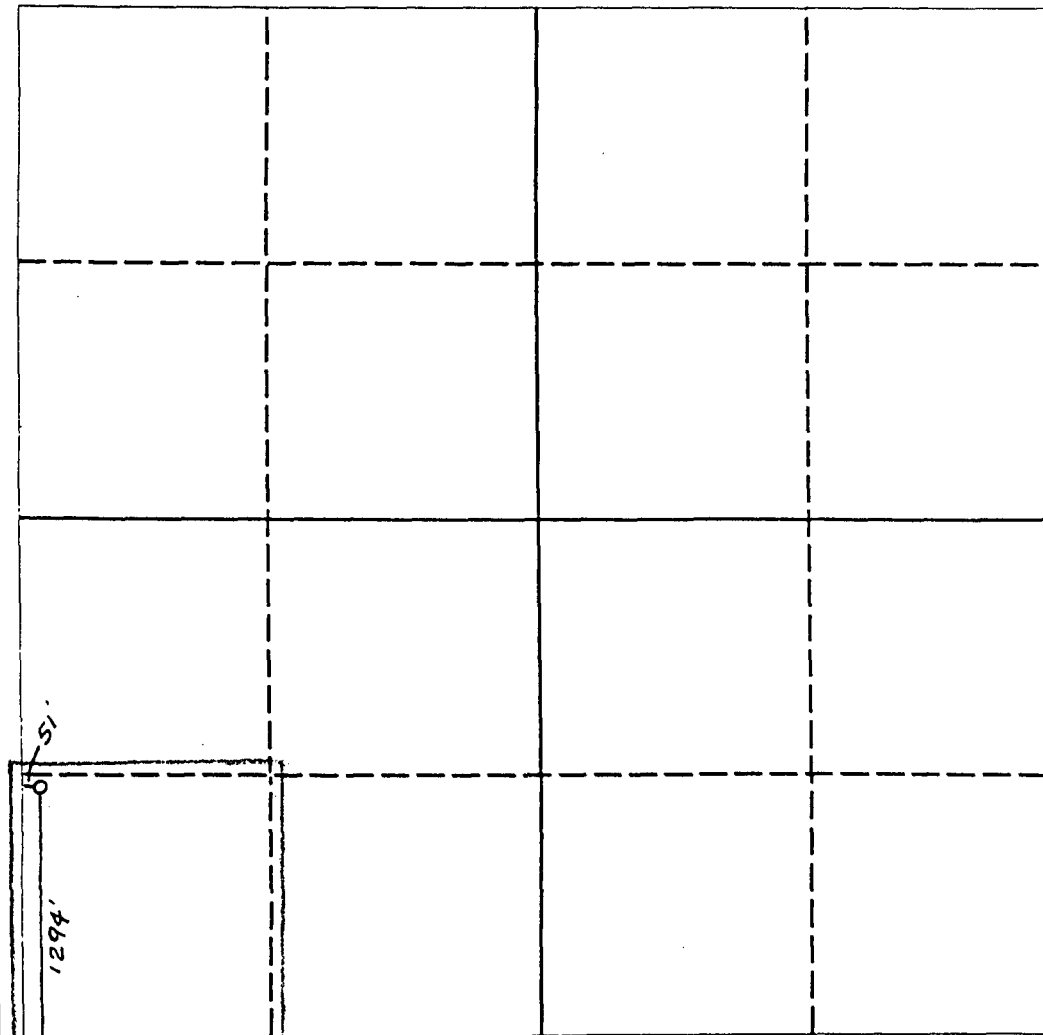
DISTRICT III
1000 Rio Brazos Rd., Aztec, NM 87410

WELL LOCATION AND ACREAGE DEDICATION PLAT

All Distances must be from the outer boundaries of the section

Operator SDX RESOURCES, INC.			Lease EAST MILLMAN UNIT		Well No. 193
Unit Letter M	Section 14	Township 19 SOUTH	Range 28 EAST	County EDDY COUNTY, NM	
Actual Footage Location of Well: 1294 feet from the SOUTH line and 51 feet from the WEST line					
Ground level Elev. 3446.	Producing Formation Q.-G.B.		Pool East Millman Q.-G.B.	Dedicated Acreage: 4.0 Acres	

1. Outline the acreage dedicated to the subject well by colored pencil or hachure marks on the plat below.
2. If more than one lease is dedicated to the well, outline each and identify the ownership thereof (both as to working interest and royalty).
3. If more than one lease of different ownership is dedicated to the well, have the interest of all owners been consolidated by communitization, unitization, force-pooling, etc.?
☐ Yes ☐ No If answer is "yes" type of consolidation _____
If answer is "no" list the owners and tract descriptions which have actually been consolidated. (Use reverse side of this form if necessary). _____
No allowable will be assigned to the well until all interests have been consolidated (by communitization, unitization, forced-pooling, or otherwise) or until a non-standard unit, eliminating such interest, has been approved by the Division.



OPERATOR CERTIFICATION

I hereby certify that the information contained herein is true and complete to the best of my knowledge and belief.

Signature

Printed Name

Position

Company

Date

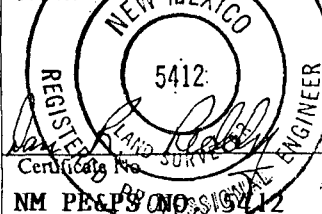
SURVEYOR CERTIFICATION

I hereby certify that the well location shown on this plat was plotted from field notes of actual surveys made by me or under my supervision, and that the same is true and correct to the best of my knowledge and belief.

Date Surveyed

JANUARY 27, 1993

Signature & Seal of
Professional Surveyor



Submit to Appropriate
District Office
State Lease -- 6 copies
Fee Lease -- 5 copies

State of New Mexico
Energy, Minerals and Natural Resources Department

Form C-101
Revised 1-1-89

DISTRICT I
P.O. Box 1980, Hobbs, NM 88240

DISTRICT II
P.O. Drawer DD, Artesia, NM 88210

DISTRICT III
1000 Rio Brazos Rd., Aztec, NM 87410

OIL CONSERVATION DIVISION

P.O. Box 2088
Santa Fe, New Mexico 87504-2088

API NO. (assigned by OCD on New Wells)

5. Indicate Type of Lease

STATE ☒

FEE ☐

6. State Oil & Gas Lease No.

648

APPLICATION FOR PERMIT TO DRILL, DEEPEN, OR PLUG BACK

1a. Type of Work:

DRILL ☒

RE-ENTER ☐

DEEPEN ☐

PLUG BACK ☐

b. Type of Well:

OIL
WELL ☒

GAS
WELL ☐

OTHER ☐

SINGLE
ZONE ☐

MULTIPLE
ZONE ☒

7. Lease Name or Unit Agreement Name

East Millman

2. Name of Operator

SDX RESOURCES, INC.

8. Well No.

194

3. Address of Operator

P.O. BOX 5061 Midland, TX. 79704-5061

9. Pool name or Wildcat

E. Millman Q-G-SA

4. Well Location

Unit Letter K

: 1330

Feet From The West

Line and 382

Feet From The South

Line

Section 14

Township 19-S

Range 28-E

NMPM Eddy

County

10. Proposed Depth
2600

11. Formation
Grayburg

12. Rotary or C.T.
Rot

13. Elevations (Show whether DF, RT, GR, etc.)

3426 GR

14. Kind & Status Plug. Bond

Blanket

15. Drilling Contractor

Capstar

16. Approx. Date Work will start

Feb. 01

17.

PROPOSED CASING AND CEMENT PROGRAM

SIZE OF HOLE	SIZE OF CASING	WEIGHT PER FOOT	SETTING DEPTH	SACKS OF CEMENT	EST. TOP
12-1/4"	8-5/8"	24#	350' +	300	surf
7-7/8"	5-1/2"	15.50#	2600'	500	surf

Plan to drill a 12-1/4" hole to approx. 350'; set 8-5/8" surface casing. Circulate "C" cement. Drill 7-7/8" hole to TD. Run open hole logs (LDT-CNL-GR & DLL). Run 5-1/2" casing and circulate 50/50 POZ "C" cement. Perforate the Grayburg-Queen and stimulate as necessary for optimum production.

Mud Program: Fresh water mud 0'-350'
Salt water mud 350'-TD.

IN ABOVE SPACE DESCRIBE PROPOSED PROGRAM: IF PROPOSAL IS TO DEEPEN OR PLUG BACK, GIVE DATA ON PRESENT PRODUCTIVE ZONE AND PROPOSED NEW PRODUCTIVE ZONE. GIVE BLOWOUT PREVENTER PROGRAM, IF ANY.

I hereby certify that the information above is true and complete to the best of my knowledge and belief.

SIGNATURE

Chuck Morgan

TITLE

Engr.

DATE

1/29/93

TYPE OR PRINT NAME

Chuck Morgan

TELEPHONE NO.

748-9814

(This space for State Use)

APPROVED BY

TITLE

DATE

CONDITIONS OF APPROVAL, IF ANY:

Submit to Appropriate
District Office
State Lease - 4 copies
Fee Lease - 3 copies

State of New Mexico
Energy, Minerals and Natural Resources Department

Form C-102
Revised 1-1-89

OIL CONSERVATION DIVISION

DISTRICT I
P.O. Box 1980, Hobbs, NM 88240

P.O. Box 2088
Santa Fe, New Mexico 87504-2088

DISTRICT II
P.O. Drawer DD, Artesia, NM 88210

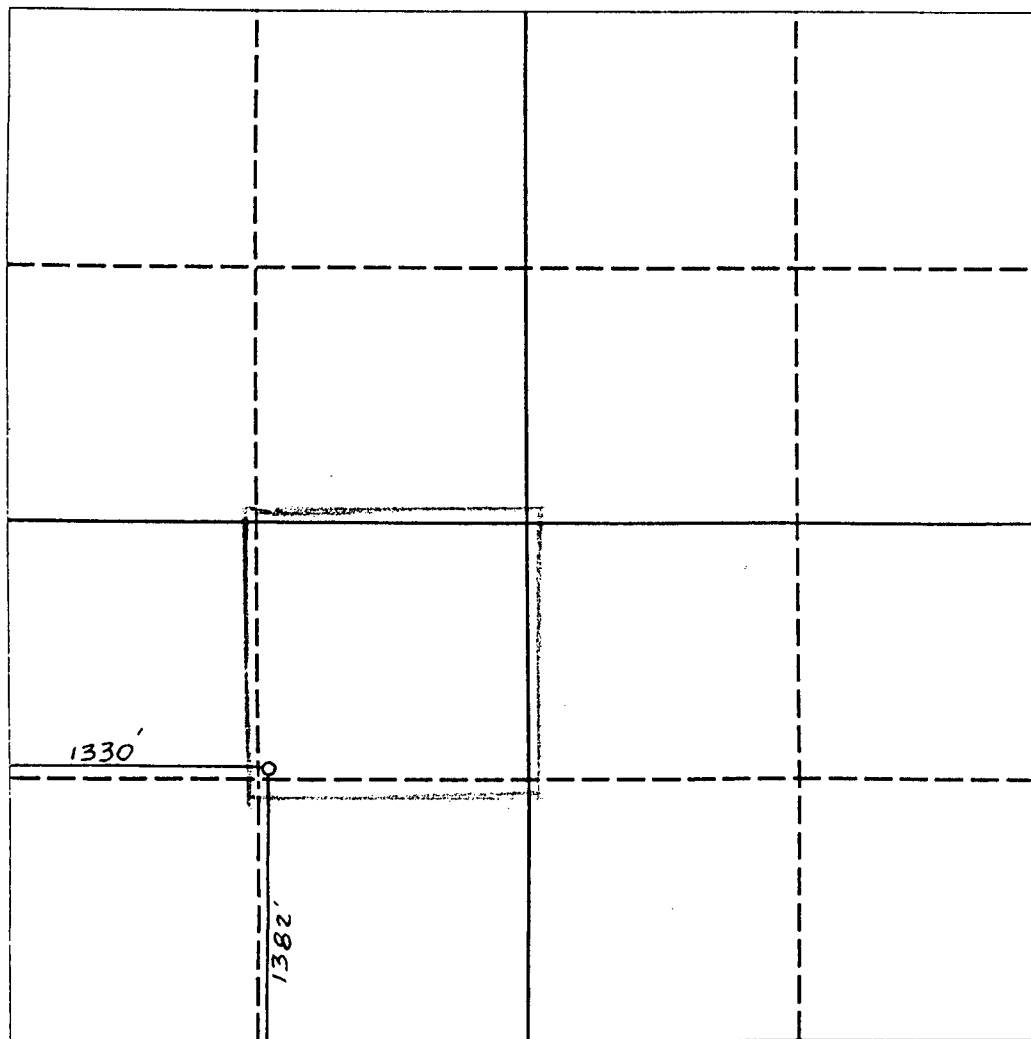
DISTRICT III
1000 Rio Brazos Rd., Aztec, NM 87410

WELL LOCATION AND ACREAGE DEDICATION PLAT

All Distances must be from the outer boundaries of the section

Operator SDX RESOURCES, INC.			Lease EAST MILLMAN UNIT		Well No. 194
Unit Letter K	Section 14	Township 19 SOUTH	Range 28 EAST	County EDDY COUNTY, NM	
Actual Footage Location of Well: 1382 feet from the SOUTH line and 1330 feet from the WEST line					
Ground level Elev. 3426.	Producing Formation Q.-G6		Pool East Millman Q.-G6-SA	Dedicated Acreage: 40 Acres	

1. Outline the acreage dedicated to the subject well by colored pencil or hatchure marks on the plat below.
2. If more than one lease is dedicated to the well, outline each and identify the ownership thereof (both as to working interest and royalty).
3. If more than one lease of different ownership is dedicated to the well, have the interest of all owners been consolidated by communitization, unitization, force-pooling, etc.?
☐ Yes ☐ No If answer is "yes" type of consolidation _____
If answer is "no" list the owners and tract descriptions which have actually been consolidated. (Use reverse side of this form if necessary). _____
No allowable will be assigned to the well until all interests have been consolidated (by communitization, unitization, forced-pooling, or otherwise) or until a non-standard unit, eliminating such interest, has been approved by the Division.



0 330 660 990 1320 1650 1980 2310 2640 2000 1500 1000 500 0

OPERATOR CERTIFICATION

I hereby certify that the information contained herein is true and complete to the best of my knowledge and belief.

Signature *Chuck Morgan*
Printed Name **Chuck Morgan**
Position **Engr.**
Company **SDX Resources, Inc.**
Date **1/29/93**

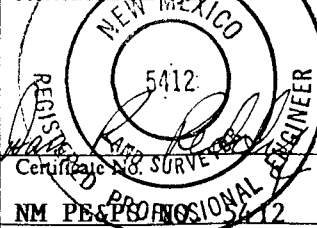
SURVEYOR CERTIFICATION

I hereby certify that the well location shown on this plat was plotted from field notes of actual surveys made by me or under my supervision, and that the same is true and correct to the best of my knowledge and belief.

Date Surveyed

JANUARY 27 1993

Signature & Seal of Professional Surveyor



Certificate No. SURVEYOR
NM PROFESSIONAL ENGINEER

Submit to Appropriate
District Office
State Lease - 6 copies
Fee Lease - 5 copies

State of New Mexico
Energy, Minerals and Natural Resources Department

Form C-101
Revised 1-1-89

DISTRICT I
P.O. Box 1980, Hobbs, NM 88240

DISTRICT II
P.O. Drawer DD, Artesia, NM 88210

DISTRICT III
1000 Rio Brazos Rd., Aztec, NM 87410

OIL CONSERVATION DIVISION
P.O. Box 2088
Santa Fe, New Mexico 87504-2088

API NO. (assigned by OCD on New Wells)

5. Indicate Type of Lease

STATE ☒

FEE ☐

6. State Oil & Gas Lease No.

648

APPLICATION FOR PERMIT TO DRILL, DEEPEN, OR PLUG BACK

1a. Type of Work:

DRILL ☒

RE-ENTER ☐

DEEPEN ☐

PLUG BACK ☐

b. Type of Well:

OIL
WELL ☒

GAS
WELL ☐

OTHER ☐

SINGLE
ZONE ☐

MULTIPLE
ZONE ☐

7. Lease Name or Unit Agreement Name

East Millman

2. Name of Operator

SDX RESOURCES, INC.

8. Well No.

195

3. Address of Operator

P.O. BOX 5061 Midland, TX. 79704-5061

9. Pool name or Wildcat

E. Millman Q-G-SA

4. Well Location

Unit Letter K : 2506 Feet From The West Line and 1375 Feet From The South Line

Section 14

Township 19-S

Range 28-E

NMPM Eddy

County

10. Proposed Depth
2600

11. Formation
Grayburg

12. Rotary or C.T.
Rot

13. Elevations (Show whether DF, RT, GR, etc.)
3404 GR

14. Kind & Status Plug. Bond
Blanket

15. Drilling Contractor
Capstar

16. Approx. Date Work will start
Feb. 01

17. PROPOSED CASING AND CEMENT PROGRAM

SIZE OF HOLE	SIZE OF CASING	WEIGHT PER FOOT	SETTING DEPTH	SACKS OF CEMENT	EST. TOP
12-1/4"	8-5/8"	24#	350' +	300	surf
7-7/8"	5-1/2"	15.50#	2600'	500	surf

Plan to drill a 12-1/4" hole to approx. 350'; set 8-5/8" surface casing. Circulate "C" cement. Drill 7-7/8" hole to TD. Run open hole logs (LDT-CNL-GR & DLL). Run 5-1/2" casing and circulate 50/50 POZ "C" cement. Perforate the Grayburg-Queen and stimulate as necessary for optimum production.

Mud Program: Fresh water mud 0'-350'
Salt water mud 350'-TD.

IN ABOVE SPACE DESCRIBE PROPOSED PROGRAM: IF PROPOSAL IS TO DEEPEN OR PLUG BACK, GIVE DATA ON PRESENT PRODUCTIVE ZONE AND PROPOSED NEW PRODUCTIVE ZONE. GIVE BLOWOUT PREVENTER PROGRAM, IF ANY.

I hereby certify that the information above is true and complete to the best of my knowledge and belief.

SIGNATURE

Chuck Morgan

TITLE

Engr

DATE

1/29/93

TYPE OR PRINT NAME

Chuck Morgan

TELEPHONE NO.

748-9814

(This space for State Use)

APPROVED BY

TITLE

DATE

CONDITIONS OF APPROVAL, IF ANY:

Submit to Appropriate
District Office
State Lease - 4 copies
Fee Lease - 3 copies

State of New Mexico
Energy, Minerals and Natural Resources Department

Form C-102
Revised 1-1-89

OIL CONSERVATION DIVISION

DISTRICT I
P.O. Box 1980, Hobbs, NM 88240

P.O. Box 2088
Santa Fe, New Mexico 87504-2088

DISTRICT II
P.O. Drawer DD, Artesia, NM 88210

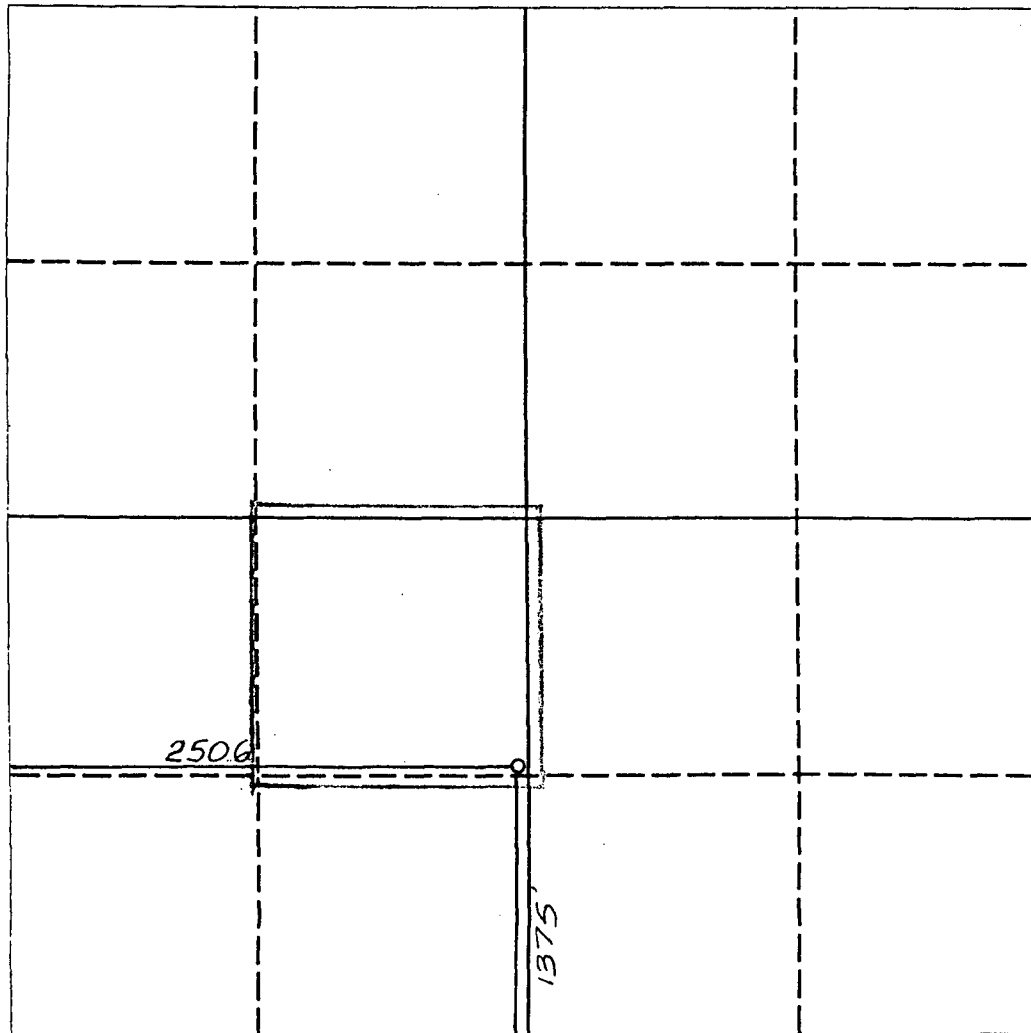
DISTRICT III
1000 Rio Brazos Rd., Aztec, NM 87410

WELL LOCATION AND ACREAGE DEDICATION PLAT

All Distances must be from the outer boundaries of the section

Operator SDX RESOURCES, INC.			Lease EAST MILLMAN UNIT		Well No. 195
Unit Letter K	Section 14	Township 19 SOUTH	Range 28 EAST	County NMPM EDDY COUNTY, NM	
Actual Footage Location of Well: 1375 feet from the SOUTH line and 2506 feet from the WEST line					
Ground level Elev. 3404.	Producing Formation Q₁-G₆		Pool East Millman Q₁-G₆-SA.		Dedicated Acreage: 40 Acres

- Outline the acreage dedicated to the subject well by colored pencil or hachure marks on the plat below.
- If more than one lease is dedicated to the well, outline each and identify the ownership thereof (both as to working interest and royalty).
- If more than one lease of different ownership is dedicated to the well, have the interest of all owners been consolidated by communitization, unitization, force-pooling, etc.?
☐ Yes ☐ No If answer is "yes" type of consolidation _____
If answer is "no" list the owners and tract descriptions which have actually been consolidated. (Use reverse side of this form if necessary).
No allowable will be assigned to the well until all interests have been consolidated (by communitization, unitization, forced-pooling, or otherwise) or until a non-standard unit, eliminating such interest, has been approved by the Division.



OPERATOR CERTIFICATION

I hereby certify that the information contained herein is true and complete to the best of my knowledge and belief.

Signature *Chuck Morgan*

Printed Name *Chuck Morgan*

Position *Engr.*

Company *SDX Resources, Inc.*

Date *1/29/93*

SURVEYOR CERTIFICATION

I hereby certify that the well location shown on this plat was plotted from field notes of actual surveys made by me or under my supervision, and that the same is true and correct to the best of my knowledge and belief.

Date Surveyed

JANUARY 27, 1993

Signature & Seal of Professional Surveyor

Chuck Morgan
NEW MEXICO
5412

REGISTERED LAND SURVEYOR
Certificate No. *5412*

NEW MEXICO PROFESSIONAL ENGINEER

Submit to Appropriate
District Office
State Lease - 6 copies
Fee Lease - 5 copies

State of New Mexico
Energy, Minerals and Natural Resources Department

Form C-101
Revised 1-1-89

OIL CONSERVATION DIVISION

DISTRICT I
P.O. Box 1980, Hobbs, NM 88240

DISTRICT II
P.O. Drawer DD, Artesia, NM 88210

DISTRICT III
1000 Rio Brazos Rd., Aztec, NM 87410

P.O. Box 2088

Santa Fe, New Mexico 87504-2088

API NO. (assigned by OCD on New Wells)

5. Indicate Type of Lease

STATE ☒

FEE ☐

6. State Oil & Gas Lease No.

648

APPLICATION FOR PERMIT TO DRILL, DEEPEN, OR PLUG BACK

1a. Type of Work:

DRILL ☒

RE-ENTER ☐

DEEPEN ☐

PLUG BACK ☐

b. Type of Well:

OIL
WELL ☒

GAS
WELL ☐

OTHER ☐

SINGLE
ZONE ☐

MULTIPLE
ZONE ☒

7. Lease Name or Unit Agreement Name

East Millman

2. Name of Operator

SDX RESOURCES, INC.

8. Well No.

196

3. Address of Operator

P.O. BOX 5061 Midland, TX. 79704-5061

9. Pool name or Wildcat

E. Millman Q-G-SA

4. Well Location

Unit Letter L : 10 Feet From The West Line and 2630 Feet From The South Line

Section 14

Township 19-S

Range 28-E

NMPM Eddy

County

10. Proposed Depth

2600

11. Formation

Grayburg

12. Rotary or C.T.

Rot

13. Elevations (Show whether DF, RT, GR, etc.)

3445 GR

14. Kind & Status Plug. Bond

Blanket

15. Drilling Contractor

Capstar

16. Approx. Date Work will start

Feb. 01

17.

PROPOSED CASING AND CEMENT PROGRAM

SIZE OF HOLE	SIZE OF CASING	WEIGHT PER FOOT	SETTING DEPTH	SACKS OF CEMENT	EST. TOP
12-1/4"	8-5/8"	24#	350' +	300	surf
7-7/8"	5-1/2"	15.50#	2600'	500	surf

Plan to drill a 12-1/4" hole to approx. 350'; set 8-5/8" surface casing. Circulate "C" cement. Drill 7-7/8" hole to TD. Run open hole logs (LDT-CNL-GR & DLL). Run 5-1/2" casing and circulate 50/50 POZ "C" cement. Perforate the Grayburg-Queen and stimulate as necessary for optimum production.

Mud Program: Fresh water mud 0'-350'
Salt water mud 350'-TD.

IN ABOVE SPACE DESCRIBE PROPOSED PROGRAM: IF PROPOSAL IS TO DEEPEN OR PLUG BACK, GIVE DATA ON PRESENT PRODUCTIVE ZONE AND PROPOSED NEW PRODUCTIVE ZONE. GIVE BLOWOUT PREVENTER PROGRAM, IF ANY.

I hereby certify that the information above is true and complete to the best of my knowledge and belief.

SIGNATURE

Chuck Morgan

TITLE

Engr.

DATE

1/29/93

TYPE OR PRINT NAME

Chuck Morgan

TELEPHONE NO. 744-9814

(This space for State Use)

APPROVED BY

TITLE

DATE

CONDITIONS OF APPROVAL, IF ANY:

Submit to Appropriate
District Office
State Lease - 4 copies
Fee Lease - 3 copies

State of New Mexico
Energy, Minerals and Natural Resources Department

Form C-102
Revised 1-1-89

OIL CONSERVATION DIVISION

DISTRICT I
P.O. Box 1980, Hobbs, NM 88240

P.O. Box 2088
Santa Fe, New Mexico 87504-2088

DISTRICT II
P.O. Drawer DD, Artesia, NM 88210

DISTRICT III
1000 Rio Brazos Rd., Aztec, NM 87410

WELL LOCATION AND ACREAGE DEDICATION PLAT

All Distances must be from the outer boundaries of the section

Operator SDX RESOURCES, INC.			Lease EAST MILLMAN UNIT		Well No. 196
Unit Letter L	Section 14	Township 19 SOUTH	Range 28 EAST	County EDDY COUNTY, NM	
Actual Footage Location of Well: 2630 feet from the SOUTH line and 10 feet from the WEST line					
Ground level Elev. 3445.	Producing Formation Q-6b		Pool East Millman Q-6b-SA	Dedicated Acreage: 40 Acres	

1. Outline the acreage dedicated to the subject well by colored pencil or hatchure marks on the plat below.
2. If more than one lease is dedicated to the well, outline each and identify the ownership thereof (both as to working interest and royalty).
3. If more than one lease of different ownership is dedicated to the well, have the interest of all owners been consolidated by communitization, unitization, force-pooling, etc.?
☐ Yes ☐ No If answer is "yes" type of consolidation _____
If answer is "no" list the owners and tract descriptions which have actually been consolidated. (Use reverse side of this form if necessary). _____
No allowable will be assigned to the well until all interests have been consolidated (by communitization, unitization, forced-pooling, or otherwise) or until a non-standard unit, eliminating such interest, has been approved by the Division.

0 330 660 990 1320 1650 1980 2310 2640 2000 1500 1000 500 0

OPERATOR CERTIFICATION

I hereby certify that the information contained herein is true and complete to the best of my knowledge and belief.

Signature
Chuck Morgan

Printed Name
Chuck Morgan

Position
Engr.

Company
SDX Resources, Inc.

Date
1/29/93

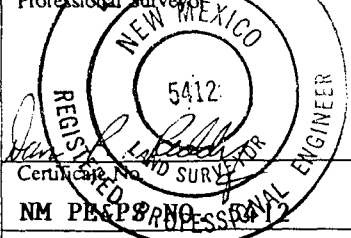
SURVEYOR CERTIFICATION

I hereby certify that the well location shown on this plat was plotted from field notes of actual surveys made by me or under my supervision, and that the same is true and correct to the best of my knowledge and belief.

Date Surveyed

JANUARY 29, 1993

Signature & Seal of
Professional Surveyor



Submit to Appropriate
District Office
State Lease - 6 copies
Fee Lease - 5 copies

State of New Mexico
Energy, Minerals and Natural Resources Department

Form C-101
Revised 1-1-89

OIL CONSERVATION DIVISION

P.O. Box 2088
Santa Fe, New Mexico 87504-2088

DISTRICT I
P.O. Box 1980, Hobbs, NM 88240

DISTRICT II
P.O. Drawer DD, Artesia, NM 88210

DISTRICT III
1000 Rio Brazos Rd., Aztec, NM 87410

API NO. (assigned by OCD on New Wells)

5. Indicate Type of Lease

STATE ☒ FEE ☐

6. State Oil & Gas Lease No.

648

APPLICATION FOR PERMIT TO DRILL, DEEPEN, OR PLUG BACK

1a. Type of Work:

DRILL ☒

RE-ENTER ☐

DEEPEN ☐

PLUG BACK ☐

b. Type of Well:

OIL
WELL ☒

GAS
WELL ☐

OTHER ☐

SINGLE
ZONE ☐

MULTIPLE
ZONE ☒

7. Lease Name or Unit Agreement Name

East Millman

2. Name of Operator

SDX RESOURCES, INC.

8. Well No.

198

3. Address of Operator

P.O. BOX 5061 Midland, TX. 79704-5061

9. Pool name or Wildcat

E. Millman Q-G-SA

4. Well Location

Unit Letter K : 2526 Feet From The West Line and 2630 Feet From The South Line

Section 14

Township 19-S

Range 28-E

NMPM Eddy

County

10. Proposed Depth
2600

11. Formation
Grayburg

12. Rotary or C.T.
Rot

13. Elevations (Show whether DF, RT, GR, etc.)
3411 GR

14. Kind & Status Plug. Bond
Blanket

15. Drilling Contractor
Capstar

16. Approx. Date Work will start
Feb. 01

17.

PROPOSED CASING AND CEMENT PROGRAM

SIZE OF HOLE	SIZE OF CASING	WEIGHT PER FOOT	SETTING DEPTH	SACKS OF CEMENT	EST. TOP
12-1/4"	8-5/8"	24#	350' +	300	surf
7-7/8"	5-1/2"	15.50#	2600'	500	surf

Plan to drill a 12-1/4" hole to approx. 350'; set 8-5/8" surface casing. Circulate "C" cement. Drill 7-7/8" hole to TD. Run open hole logs (LDT-CNL-GR & DLL). Run 5-1/2" casing and circulate 50/50 POZ "C" cement. Perforate the Grayburg-Queen and stimulate as necessary for optimum production.

Mud Program: Fresh water mud 0'-350'
Salt water mud 350'-TD.

IN ABOVE SPACE DESCRIBE PROPOSED PROGRAM: IF PROPOSAL IS TO DEEPEN OR PLUG BACK, GIVE DATA ON PRESENT PRODUCTIVE ZONE AND PROPOSED NEW PRODUCTIVE ZONE. GIVE BLOWOUT PREVENTER PROGRAM, IF ANY.

I hereby certify that the information above is true and complete to the best of my knowledge and belief.

SIGNATURE

Chuck Morgan

TITLE

Engr.

DATE

1/29/93

TYPE OR PRINT NAME

Chuck Morgan

TELEPHONE NO.

748-9814

(This space for State Use)

APPROVED BY

TITLE

DATE

CONDITIONS OF APPROVAL, IF ANY:

Submit to Appropriate
District Office
State Lease - 4 copies
Fee Lease - 3 copies

State of New Mexico
Energy, Minerals and Natural Resources Department

Form C-102
Revised 1-1-89

OIL CONSERVATION DIVISION

P.O. Box 2088
Santa Fe, New Mexico 87504-2088

DISTRICT I
P.O. Box 1980, Hobbs, NM 88240

DISTRICT II
P.O. Drawer DD, Artesia, NM 88210

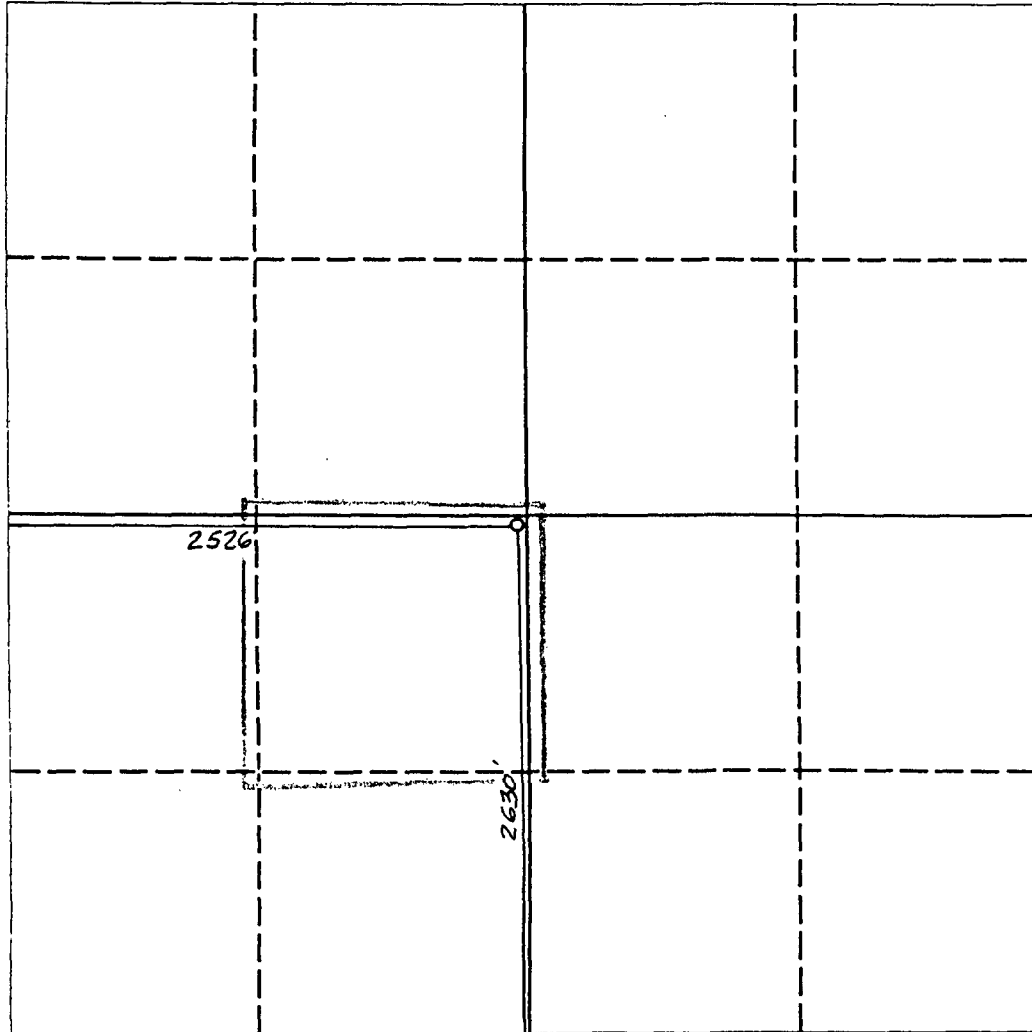
DISTRICT III
1000 Rio Brazos Rd., Aztec, NM 87410

WELL LOCATION AND ACREAGE DEDICATION PLAT

All Distances must be from the outer boundaries of the section

Operator SDX RESOURCES, INC.			Lease EAST MILLMAN UNIT		Well No. 198
Unit Letter K	Section 14	Township 19 SOUTH	Range 28 EAST	County EDDY COUNTY, NM	
Actual Footage Location of Well: 2630 feet from the SOUTH line and 2526 feet from the WEST line					
Ground level Elev. 3411.	Producing Formation Q. - Gb.		Pool East Millman Q-G-5A	Dedicated Acreage: 40 Acres	

1. Outline the acreage dedicated to the subject well by colored pencil or hatchure marks on the plat below.
2. If more than one lease is dedicated to the well, outline each and identify the ownership thereof (both as to working interest and royalty).
3. If more than one lease of different ownership is dedicated to the well, have the interest of all owners been consolidated by communitization, unitization, force-pooling, etc.?
☐ Yes ☐ No If answer is "yes" type of consolidation _____
If answer is "no" list the owners and tract descriptions which have actually been consolidated. (Use reverse side of this form if necessary). _____
No allowable will be assigned to the well until all interests have been consolidated (by communitization, unitization, forced-pooling, or otherwise) or until a non-standard unit, eliminating such interest, has been approved by the Division.



OPERATOR CERTIFICATION

I hereby certify that the information contained herein is true and complete to the best of my knowledge and belief.

Signature *Chuck Morgan*

Printed Name *Chuck Morgan*

Position *Engr.*

Company *SDX Resources, Inc.*

Date *1/29/93*

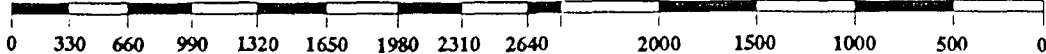
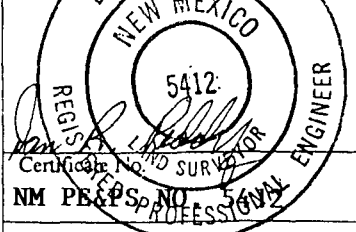
SURVEYOR CERTIFICATION

I hereby certify that the well location shown on this plat was plotted from field notes of actual surveys made by me or under my supervision, and that the same is true and correct to the best of my knowledge and belief.

Date Surveyed

JANUARY 28, 1993

Signature & Seal of Professional Surveyor



Submit to Appropriate
District Office
State Lease - 6 copies
Fee Lease - 5 copies

State of New Mexico
Energy, Minerals and Natural Resources Department

Form C-101
Revised 1-1-89

DISTRICT I
P.O. Box 1980, Hobbs, NM 88240

DISTRICT II
P.O. Drawer DD, Artesia, NM 88210

DISTRICT III
1000 Rio Brazos Rd., Aztec, NM 87410

OIL CONSERVATION DIVISION

P.O. Box 2088
Santa Fe, New Mexico 87504-2088

API NO. (assigned by OCD on New Wells)

5. Indicate Type of Lease

STATE ☒

FEE ☐

6. State Oil & Gas Lease No.

648

APPLICATION FOR PERMIT TO DRILL, DEEPEN, OR PLUG BACK

1a. Type of Work:

DRILL ☒

RE-ENTER ☐

DEEPEN ☐

PLUG BACK ☐

b. Type of Well:

OIL
WELL ☒

GAS
WELL ☐

OTHER ☐

SINGLE
ZONE ☐

MULTIPLE
ZONE ☒

7. Lease Name or Unit Agreement Name

East Millman

2. Name of Operator

SDX RESOURCES, INC.

8. Well No.

199

3. Address of Operator

P.O. BOX 5061 Midland, TX. 79704-5061

9. Pool name or Wildcat

E. Millman Q-G-SA

4. Well Location

Unit Letter E : 10 Feet From The West Line and 1425 Feet From The North Line

Section 14

Township 19-S

Range 28-E

NMPM Eddy

County

10. Proposed Depth
2600

11. Formation
Grayburg

12. Rotary or C.T.
Rot

13. Elevations (Show whether DF, RT, GR, etc.)
3467 GR

14. Kind & Status Plug. Bond
Blanket

15. Drilling Contractor
Capstar

16. Approx. Date Work will start
Feb. 01

17.

PROPOSED CASING AND CEMENT PROGRAM

SIZE OF HOLE	SIZE OF CASING	WEIGHT PER FOOT	SETTING DEPTH	SACKS OF CEMENT	EST. TOP
12-1/4"	8-5/8"	24#	350' +	300	surf
7-7/8"	5-1/2"	15.50#	2600'	500	surf

Plan to drill a 12-1/4" hole to approx. 350'; set 8-5/8" surface casing. Circulate "C" cement. Drill 7-7/8" hole to TD. Run open hole logs (LDT-CNL-GR & DLL). Run 5-1/2" casing and circulate 50/50 POZ "C" cement. Perforate the Grayburg-Queen and stimulate as necessary for optimum production.

Mud Program: Fresh water mud 0'-350'
Salt water mud 350'-TD.

IN ABOVE SPACE DESCRIBE PROPOSED PROGRAM: IF PROPOSAL IS TO DEEPEN OR PLUG BACK, GIVE DATA ON PRESENT PRODUCTIVE ZONE AND PROPOSED NEW PRODUCTIVE ZONE. GIVE BLOWOUT PREVENTER PROGRAM, IF ANY.

I hereby certify that the information above is true and complete to the best of my knowledge and belief.

SIGNATURE

Chuck Morgan

TITLE

Engr.

DATE

1/29/93

TYPE OR PRINT NAME

Chuck Morgan

TELEPHONE NO. 748-9814

(This space for State Use)

APPROVED BY

TITLE

DATE

CONDITIONS OF APPROVAL, IF ANY:

Submit to Appropriate
District Office
State Lease - 4 copies
Fee Lease - 3 copies

State of New Mexico
Energy, Minerals and Natural Resources Department

Form C-102
Revised 1-1-89

OIL CONSERVATION DIVISION

P.O. Box 2088
Santa Fe, New Mexico 87504-2088

DISTRICT I
P.O. Box 1980, Hobbs, NM 88240

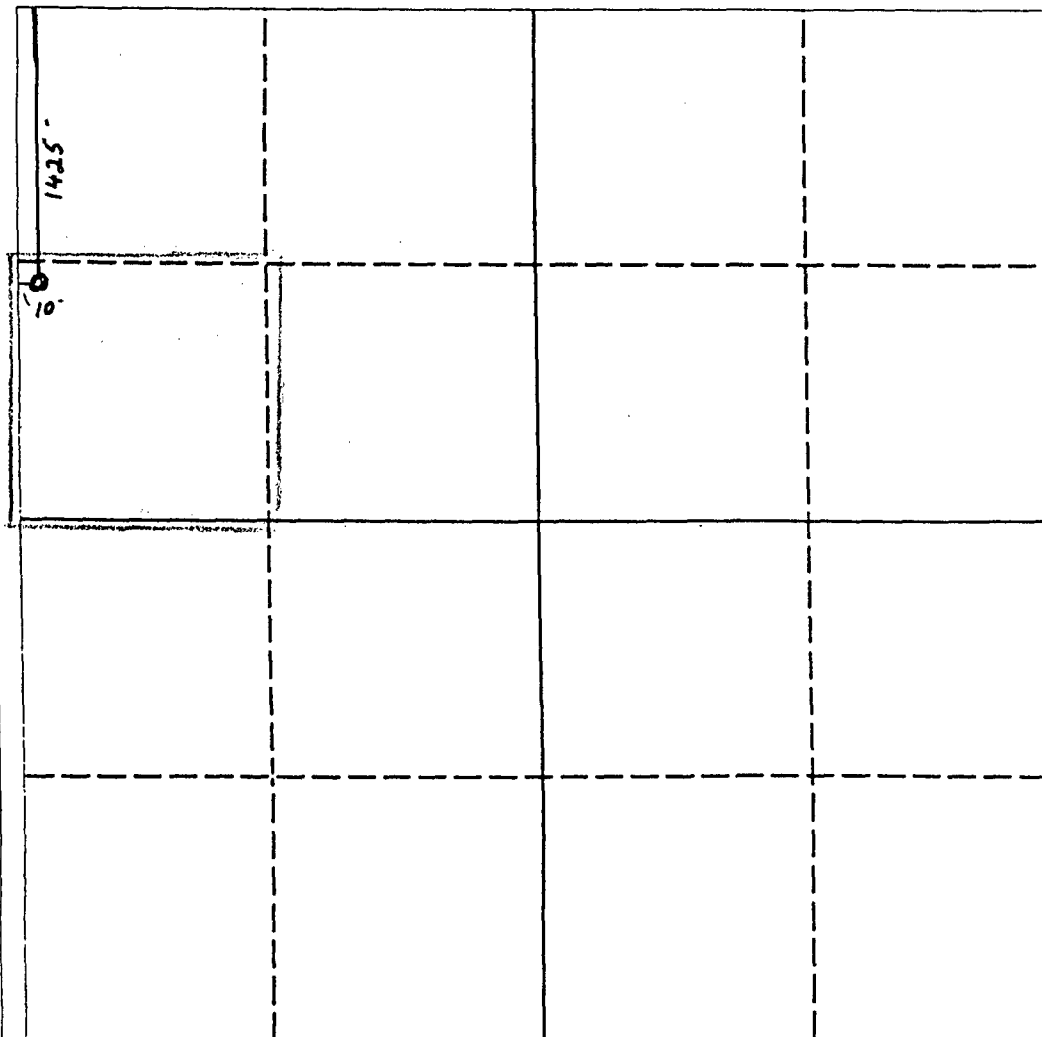
DISTRICT II
P.O. Drawer DD, Artesia, NM 88210

DISTRICT III
1000 Rio Brazos Rd., Aztec, NM 87410

WELL LOCATION AND ACREAGE DEDICATION PLAT

All Distances must be from the outer boundaries of the section

Operator SDX RESOURCES, INC.		Lease East Millman Unit		Well No. 199
Unit Letter E	Section 14	Township 19 South	Range 28 East NMPM	County Eddy County, N.M.
Actual Footage Location of Well: 1425 feet from the North line and 10 feet from the West line				
Ground level Elev. 3467	Producing Formation Q-6b		Pool East Millman Q-6b-5A	Dedicated Acreage: 40 Acres
<p>1. Outline the acreage dedicated to the subject well by colored pencil or hachure marks on the plat below.</p> <p>2. If more than one lease is dedicated to the well, outline each and identify the ownership thereof (both as to working interest and royalty).</p> <p>3. If more than one lease of different ownership is dedicated to the well, have the interest of all owners been consolidated by communitization, unitization, force-pooling, etc.? <input type="checkbox"/> Yes <input type="checkbox"/> No If answer is "yes" type of consolidation _____</p> <p>If answer is "no" list the owners and tract descriptions which have actually been consolidated. (Use reverse side of this form if necessary.) _____</p> <p>No allowable will be assigned to the well until all interests have been consolidated (by communitization, unitization, forced-pooling, or otherwise) or until a non-standard unit, eliminating such interest, has been approved by the Division.</p>				



OPERATOR CERTIFICATION

I hereby certify that the information contained herein is true and complete to the best of my knowledge and belief.

Chick Morgan
Signature

Chick Morgan
Printed Name

Engr.
Position

SDX Resources, Inc.
Company

1/29/93
Date

SURVEYOR CERTIFICATION

I hereby certify that the well location shown on this plat was plotted from field notes of actual surveys made by me or under my supervision, and that the same is true and correct to the best of my knowledge and belief.

Date Surveyed

JANUARY 27, 1993

Signature & Seal of Professional Surveyor

5412

REGISTERED PROFESSIONAL ENGINEER

Certificate No. *5412*

NM PE&PS NO. 5412

0 330 660 990 1320 1650 1980 2310 2640 2000 1500 1000 500

Submit to Appropriate
District Office
State Lease - 6 copies
Fee Lease - 5 copies

State of New Mexico
Energy, Minerals and Natural Resources Department

Form C-101
Revised 1-1-89

OIL CONSERVATION DIVISION

P.O. Box 2088
Santa Fe, New Mexico 87504-2088

DISTRICT I
P.O. Box 1980, Hobbs, NM 88240

DISTRICT II
P.O. Drawer DD, Artesia, NM 88210

DISTRICT III
1000 Rio Brazos Rd., Aztec, NM 87410

APPLICATION FOR PERMIT TO DRILL, DEEPEN, OR PLUG BACK						API NO. (assigned by OCD on New Wells)					
1a. Type of Work: DRILL <input checked="" type="checkbox"/> RE-ENTER <input type="checkbox"/> DEEPEN <input type="checkbox"/> PLUG BACK <input type="checkbox"/>						5. Indicate Type of Lease STATE <input checked="" type="checkbox"/> FEE <input type="checkbox"/>					
b. Type of Well: OIL WELL <input checked="" type="checkbox"/> GAS WELL <input type="checkbox"/> OTHER <input type="checkbox"/> SINGLE ZONE <input type="checkbox"/> MULTIPLE ZONE <input checked="" type="checkbox"/>						6. State Oil & Gas Lease No. 648					
2. Name of Operator SDX RESOURCES, INC.						7. Lease Name or Unit Agreement Name East Millman					
3. Address of Operator P.O. BOX 5061 Midland, TX. 79704-5061						8. Well No. 200					
4. Well Location Unit Letter C : 1330 Feet From The West Line and 1261 Feet From The North Line Section 14 Township 19-S Range 28-E NMPM Eddy County						9. Pool name or Wildcat E. Millman Q-G-SA					
10. Proposed Depth 2600				11. Formation Grayburg		12. Rotary or C.T. Rot					
13. Elevations (Show whether DF, RT, GR, etc.) 3432 GR		14. Kind & Status Plug. Bond Blanket		15. Drilling Contractor Capstar		16. Approx. Date Work will start Feb. 01					
17. PROPOSED CASING AND CEMENT PROGRAM											
SIZE OF HOLE		SIZE OF CASING		WEIGHT PER FOOT		SETTING DEPTH		SACKS OF CEMENT		EST. TOP	
12-1/4"		8-5/8"		24#		350' +		300		surf	
7-7/8"		5-1/2"		15.50#		2600'		500		surf	

Plan to drill a 12-1/4" hole to approx. 350'; set 8-5/8" surface casing. Circulate "C" cement. Drill 7-7/8" hole to TD. Run open hole logs (LDT-CNL-GR & DLL). Run 5-1/2" casing and circulate 50/50 POZ "C" cement. Perforate the Grayburg-Queen and stimulate as necessary for optimum production.

Mud Program: Fresh water mud 0'-350'
Salt water mud 350'-TD.

IN ABOVE SPACE DESCRIBE PROPOSED PROGRAM: IF PROPOSAL IS TO DEEPEN OR PLUG BACK, GIVE DATA ON PRESENT PRODUCTIVE ZONE AND PROPOSED NEW PRODUCTIVE ZONE. GIVE BLOWOUT PREVENTER PROGRAM, IF ANY.

I hereby certify that the information above is true and complete to the best of my knowledge and belief.

SIGNATURE Chuck Morgan TITLE Engr. DATE 1/29/93

TYPE OR PRINT NAME Chuck Morgan TELEPHONE NO. 748-9814

(This space for State Use)

APPROVED BY _____ TITLE _____ DATE _____

CONDITIONS OF APPROVAL, IF ANY:

Submit to Appropriate
District Office
State Lease - 4 copies
Fee Lease - 3 copies

State of New Mexico
Energy, Minerals and Natural Resources Department

Form C-102
Revised 1-1-89

OIL CONSERVATION DIVISION

P.O. Box 2088
Santa Fe, New Mexico 87504-2088

DISTRICT I
P.O. Box 1980, Hobbs, NM 88240

DISTRICT II
P.O. Drawer DD, Artesia, NM 88210

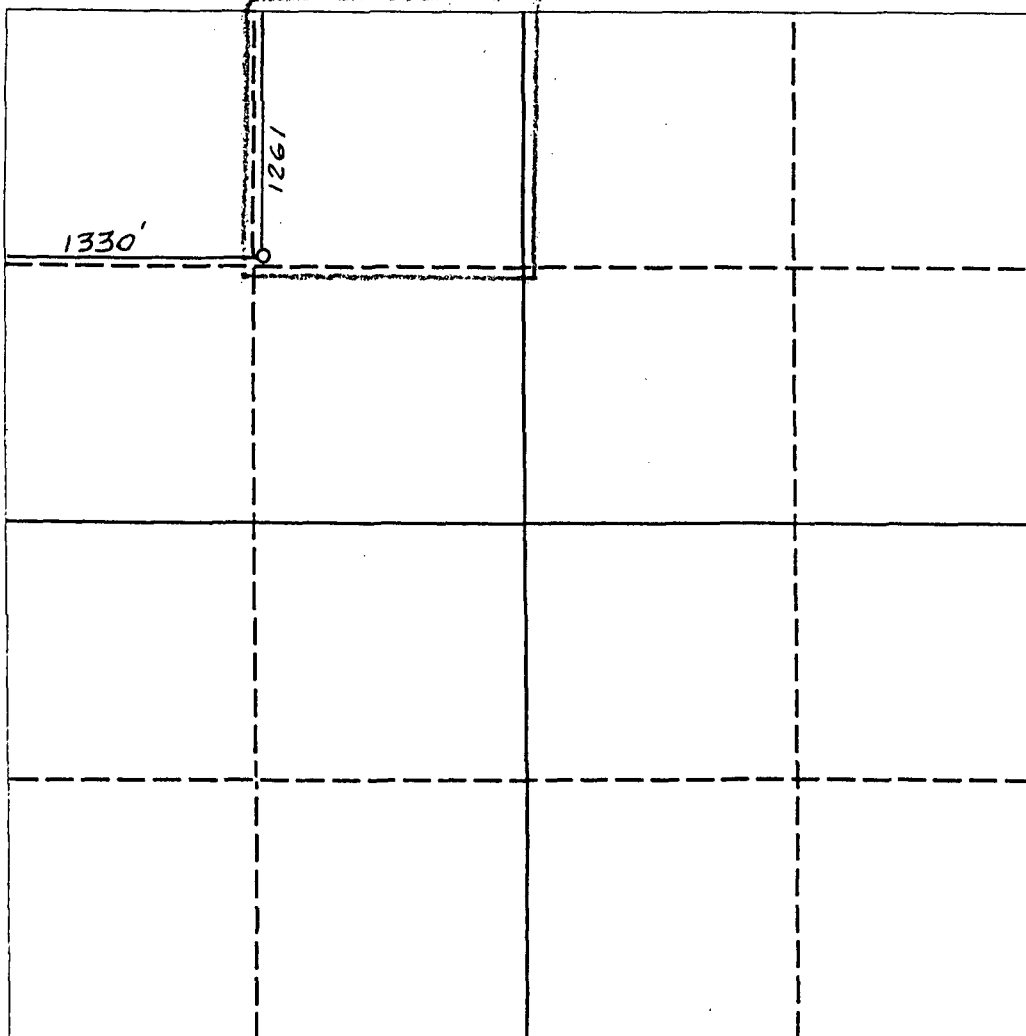
DISTRICT III
1000 Rio Brazos Rd., Aztec, NM 87410

WELL LOCATION AND ACREAGE DEDICATION PLAT

All Distances must be from the outer boundaries of the section

Operator SDX RESOURCES, INC.			Lease EAST MILLMAN UNIT		Well No. 200
Unit Letter C	Section 14	Township 19 SOUTH	Range 28 EAST	County EDDY COUNTY, NM	
Actual Footage Location of Well: 1261 feet from the NORTH line and 1330 feet from the WEST line					
Ground level Elev. 3432.	Producing Formation Q-6b		Pool East Millman Q-6-SA	Dedicated Acreage: 40 Acres	

1. Outline the acreage dedicated to the subject well by colored pencil or hachure marks on the plat below.
2. If more than one lease is dedicated to the well, outline each and identify the ownership thereof (both as to working interest and royalty).
3. If more than one lease of different ownership is dedicated to the well, have the interest of all owners been consolidated by communitization, unitization, force-pooling, etc.?
☐ Yes ☐ No If answer is "yes" type of consolidation _____
If answer is "no" list the owners and tract descriptions which have actually been consolidated. (Use reverse side of this form if necessary.) _____
No allowable will be assigned to the well until all interests have been consolidated (by communitization, unitization, forced-pooling, or otherwise) or until a non-standard unit, eliminating such interest, has been approved by the Division.



OPERATOR CERTIFICATION

I hereby certify that the information contained herein is true and complete to the best of my knowledge and belief.

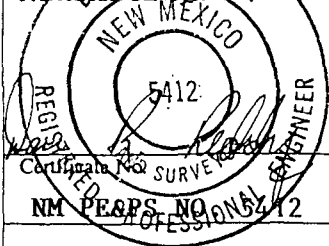
Signature *Chuck Morgan*
Printed Name **Chuck Morgan**
Position **Engr.**
Company **SDX Resources, Inc.**
Date **1/29/93**

SURVEYOR CERTIFICATION

I hereby certify that the well location shown on this plat was plotted from field notes of actual surveys made by me or under my supervision, and that the same is true and correct to the best of my knowledge and belief.

Date Surveyed
JANUARY 28, 1993

Signature of Seal of Professional Surveyor



0 330 660 990 1320 1650 1980 2310 2640 2000 1500 1000 500 0

Submit to Appropriate
District Office
State Lease - 6 copies
Fee Lease - 5 copies

State of New Mexico
Energy, Minerals and Natural Resources Department

Form C-101
Revised 1-1-89

OIL CONSERVATION DIVISION

P.O. Box 2088
Santa Fe, New Mexico 87504-2088

DISTRICT I
P.O. Box 1980, Hobbs, NM 88240

DISTRICT II
P.O. Drawer DD, Artesia, NM 88210

DISTRICT III
1000 Rio Brazos Rd., Aztec, NM 87410

APPLICATION FOR PERMIT TO DRILL, DEEPEN, OR PLUG BACK						API NO. (assigned by OCD on New Wells)					
1a. Type of Work: DRILL <input checked="" type="checkbox"/> RE-ENTER <input type="checkbox"/> DEEPEN <input type="checkbox"/> PLUG BACK <input type="checkbox"/>						5. Indicate Type of Lease STATE <input checked="" type="checkbox"/> FEE <input type="checkbox"/>					
b. Type of Well: OIL WELL <input checked="" type="checkbox"/> GAS WELL <input type="checkbox"/> OTHER <input type="checkbox"/> SINGLE ZONE <input type="checkbox"/> MULTIPLE ZONE <input type="checkbox"/>						6. State Oil & Gas Lease No. 648					
2. Name of Operator SDX RESOURCES, INC.						7. Lease Name or Unit Agreement Name East Millman					
3. Address of Operator P.O. BOX 5061 Midland, TX. 79704-5061						8. Well No. 201					
4. Well Location Unit Letter C : 2514 Feet From The West Line and 1261 Feet From The North Line Section 14 Township 19-S Range 28-E NMPM Eddy County						9. Pool name or Wildcat E. Millman Q-G-SA					
10. Proposed Depth 2600				11. Formation Grayburg		12. Rotary or C.T. Rot					
13. Elevations (Show whether DF, RT, GR, etc.) 3420 GR			14. Kind & Status Plug Bond Blanket		15. Drilling Contractor Capstar		16. Approx. Date Work will start Feb. 01				
17. PROPOSED CASING AND CEMENT PROGRAM											
SIZE OF HOLE		SIZE OF CASING		WEIGHT PER FOOT		SETTING DEPTH		SACKS OF CEMENT		EST. TOP	
12-1/4"		8-5/8"		24#		350' +		300		surf	
7-7/8"		5-1/2"		15.50#		2600'		500		surf	

Plan to drill a 12-1/4" hole to approx. 350'; set 8-5/8" surface casing. Circulate "C" cement. Drill 7-7/8" hole to TD. Run open hole logs (LDT-CNL-GR & DLL). Run 5-1/2" casing and circulate 50/50 POZ "C" cement. Perforate the Grayburg-Queen and stimulate as necessary for optimum production.

Mud Program: Fresh water mud 0'-350'
Salt water mud 350'-TD.

IN ABOVE SPACE DESCRIBE PROPOSED PROGRAM: IF PROPOSAL IS TO DEEPEN OR PLUG BACK, GIVE DATA ON PRESENT PRODUCTIVE ZONE AND PROPOSED NEW PRODUCTIVE ZONE. GIVE BLOWOUT PREVENTER PROGRAM, IF ANY.

I hereby certify that the information above is true and complete to the best of my knowledge and belief.

SIGNATURE Chuck Morgan TITLE Engr. DATE 1/29/93

TYPE OR PRINT NAME Chuck Morgan TELEPHONE NO. 748-9814

(This space for State Use)

APPROVED BY _____ TITLE _____ DATE _____

CONDITIONS OF APPROVAL, IF ANY:

Submit to Appropriate
District Office
State Lease - 4 copies
Fee Lease - 3 copies

State of New Mexico
Energy, Minerals and Natural Resources Department

Form C-102
Revised 1-1-89

OIL CONSERVATION DIVISION

DISTRICT I
P.O. Box 1980, Hobbs, NM 88240

P.O. Box 2088
Santa Fe, New Mexico 87504-2088

DISTRICT II
P.O. Drawer DD, Artesia, NM 88210

DISTRICT III
1000 Rio Brazos Rd., Aztec, NM 87410

WELL LOCATION AND ACREAGE DEDICATION PLAT

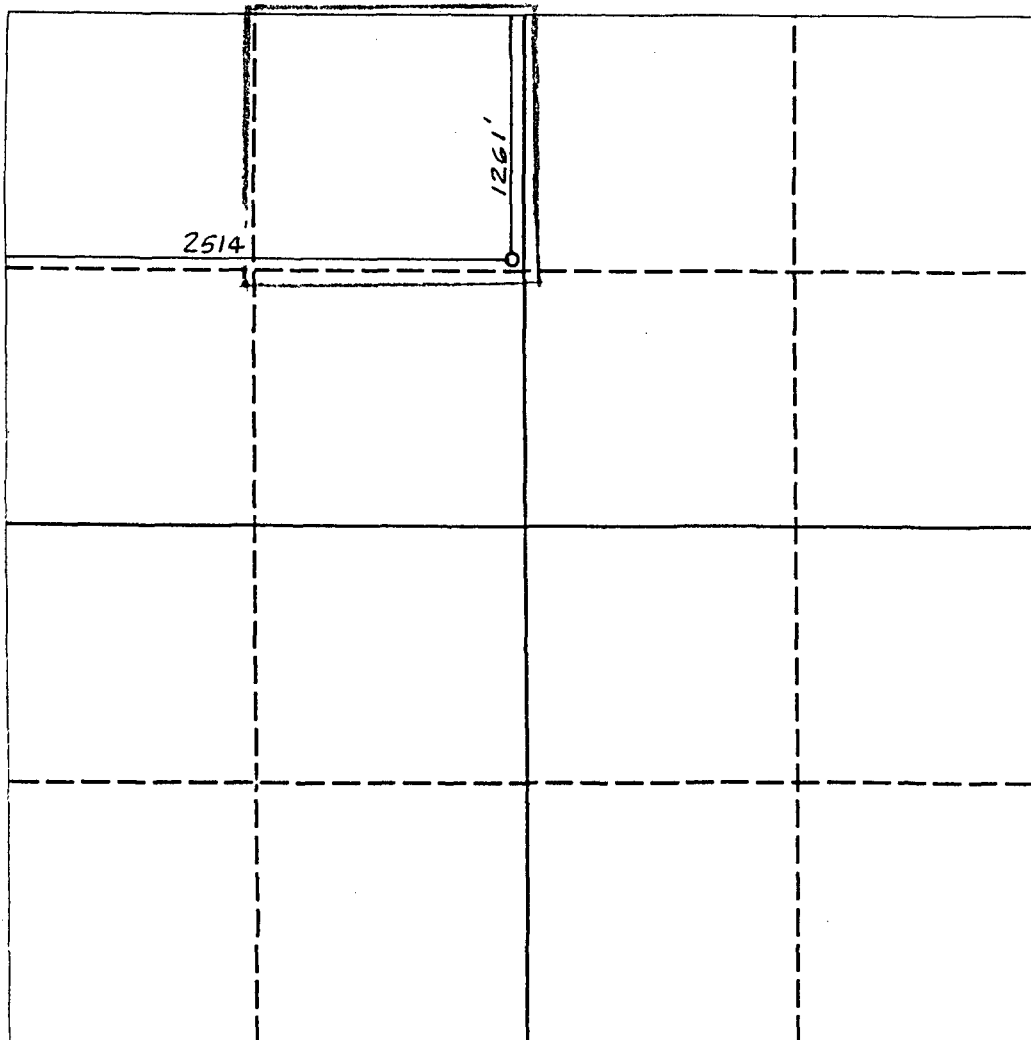
All Distances must be from the outer boundaries of the section

Operator SDX RESOURCES, INC.			Lease EAST MILLMAN UNIT		Well No. 201
Unit Letter C	Section 14	Township 19 SOUTH	Range 28 EAST	County EDDY COUNTY, NM	

Actual Footage Location of Well:

1261 feet from the **NORTH** line and 2514 feet from the **WEST** line
Ground level Elev. **3420.** Producing Formation **Q-6b** Pool **East Millman Q-6-SA** Dedicated Acreage: **40** Acres

1. Outline the acreage dedicated to the subject well by colored pencil or hatchure marks on the plat below.
2. If more than one lease is dedicated to the well, outline each and identify the ownership thereof (both as to working interest and royalty).
3. If more than one lease of different ownership is dedicated to the well, have the interest of all owners been consolidated by communitization, unitization, force-pooling, etc.?
☐ Yes ☐ No If answer is "yes" type of consolidation _____
If answer is "no" list the owners and tract descriptions which have actually been consolidated. (Use reverse side of this form if necessary). _____
No allowable will be assigned to the well until all interests have been consolidated (by communitization, unitization, forced-pooling, or otherwise) or until a non-standard unit, eliminating such interest, has been approved by the Division.



0 330 660 990 1320 1650 1980 2310 2640 2000 1500 1000 500 0

OPERATOR CERTIFICATION

I hereby certify that the information contained herein is true and complete to the best of my knowledge and belief.

Signature *Chuck Morgan*
Printed Name **Chuck Morgan**
Position **Engr.**
Company **SDX Resources**
Date **1/29/93**

SURVEYOR CERTIFICATION

I hereby certify that the well location shown on this plat was plotted from field notes of actual surveys made by me or under my supervision, and that the same is true and correct to the best of my knowledge and belief.

Date Surveyed
JANUARY 28, 1993

Signature & Seal of EDDY
Professional Surveyor

