

SDX RESOURCES, INC.

P.O. BOX 5061  
MIDLAND, TEXAS 79704  
(915) 685-1761

OIL CONSERVATION DIVISION  
RECEIVED

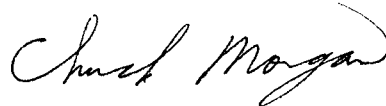
'93 MAR 27 AM 9 24

N.M.O.C.D.  
P.O. Box 2088  
Santa Fe, N.M. 87504-2088  
Attn. Mr. Stogner

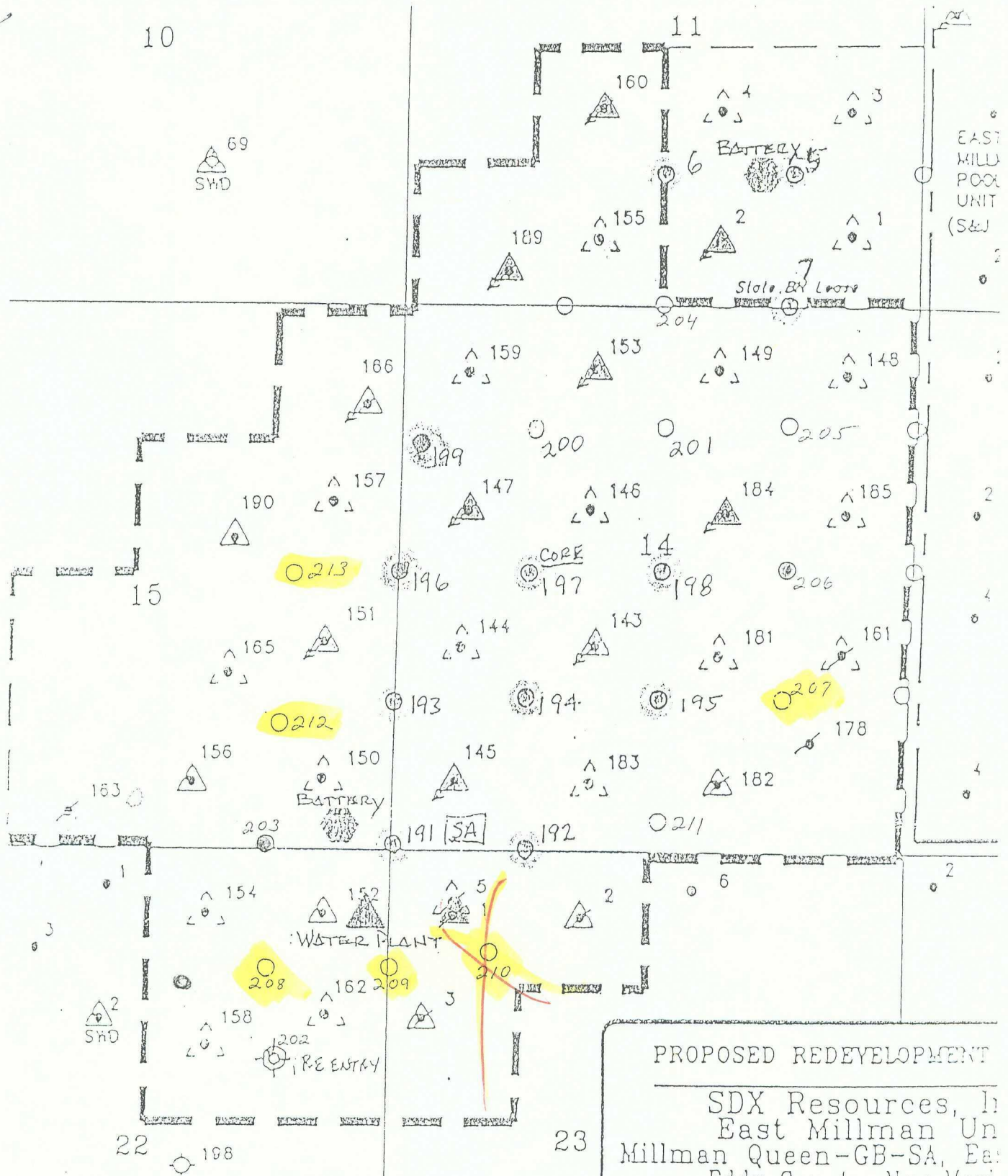
Mr. Stogner,

This letter is intended to serve as an application for administrative approval for five additional unorthodox drilling locations on our East Millman lease. The locations requested will be the East Millman #207, 208, 209, 212, & #213. Survey plats and O.C.D. forms C-101 accompany this letter. A lease map detailing the project expansion is also enclosed. As discussed in our original applications, the purpose of these locations is to convert the existing waterflood project on our East Millman lease from an 80 acre 5 spot pattern to a 40 acre 5 spot pattern. This reduced spacing will result in the recovery of additional reserves that will otherwise be lost. No offset operators are affected by any of the proposed unorthodox locations. Thanks for your prompt attention.

Sincerely,



Chuck Morgan, P.E.



193

7

22

23

LEGEND

- Proposed Producing Wells
- △ Proposed Injection Wells
- △ Re-enter Injection Well
- △ Re-enter & Convert to Injector

PROPOSED REDEVELOPMENT

SDX Resources, Inc.  
East Millman Unit  
Millman Queen-GB-SA, East  
Eddy County, New Mexico

○ Producer    △ Active Injector    △ Shut-In  
/ SI or TA

0      Scale      2540'

I. SCOTT HANNA & ASSOCIATES, INC.

Submit to Appropriate  
District Office  
State Lease - 6 copies  
Fee Lease - 5 copies

State of New Mexico  
Energy, Minerals and Natural Resources Department

Form C-101  
Revised 1-1-89

OIL CONSERVATION DIVISION

DISTRICT I  
P.O. Box 1980, Hobbs, NM 88240

DISTRICT II  
P.O. Drawer DD, Artesia, NM 88210

DISTRICT III  
1000 Rio Brazos Rd., Aztec, NM 87410

P.O. Box 2088  
Santa Fe, New Mexico 87504-2088

API NO. (assigned by OCD on New Wells)

5. Indicate Type of Lease

STATE ☒

FEE ☐

6. State Oil & Gas Lease No.  
648

APPLICATION FOR PERMIT TO DRILL, DEEPEN, OR PLUG BACK

1a. Type of Work:

DRILL ☒

RE-ENTER ☐

DEEPEN ☐

PLUG BACK ☐

b. Type of Well:

OIL  
WELL ☒

GAS  
WELL ☐

OTHER ☐

SINGLE  
ZONE ☐

MULTIPLE  
ZONE ☒

7. Lease Name or Unit Agreement Name

East Millman

2. Name of Operator

SDX RESOURCES, INC.

8. Well No.

207

3. Address of Operator

P.O. BOX 5061 Midland, TX. 79704-5061

9. Pool name or Wildcat

E. Millman Q-G-SA

4. Well Location

Unit Letter I : 1180 Feet From The East Line and 1400 Feet From The South Line

Section 14 Township 19-S Range 28-E NMPM Eddy County

10. Proposed Depth  
2900

11. Formation  
Grayburg

12. Rotary or C.T.  
Rot

13. Elevations (Show whether DF, RT, GR, etc.)

3391 GR

14. Kind & Status Plug. Bond

Blanket

15. Drilling Contractor

Capstar

16. Approx. Date Work will start

June, 1st

17. PROPOSED CASING AND CEMENT PROGRAM

SIZE OF HOLE	SIZE OF CASING	WEIGHT PER FOOT	SETTING DEPTH	SACKS OF CEMENT	EST. TOP
12-1/4"	8-5/8"	24#	380'	300	surf
7-7/8"	5-1/2"	15.50#	2900'	500	surf

Plan to drill a 12-1/4" hole to approx. 380'; set 8-5/8" surface casing. Circulate "C" cement. Drill 7-7/8" hole to TD. Run open hole logs (LDT-CNL-GR & DLL). Run 5-1/2" casing and circulate 50/50 POZ "C" cement. Perforate the Grayburg-Queen and stimulate as necessary for optimum production.

Mud Program: Fresh water mud 0'-350'  
Salt water mud 350'-TD.

IN ABOVE SPACE DESCRIBE PROPOSED PROGRAM: IF PROPOSAL IS TO DEEPEN OR PLUG BACK, GIVE DATA ON PRESENT PRODUCTIVE ZONE AND PROPOSED NEW PRODUCTIVE ZONE. GIVE BLOWOUT PREVENTER PROGRAM, IF ANY.

I hereby certify that the information above is true and complete to the best of my knowledge and belief.

SIGNATURE

*Chuck Morgan*

TITLE

*Engr.*

DATE

*5/24/93*

TYPE OR PRINT NAME

*Chuck Morgan*

TELEPHONE NO.

*748-9224*

(This space for State Use)

APPROVED BY \_\_\_\_\_ TITLE \_\_\_\_\_ DATE \_\_\_\_\_

CONDITIONS OF APPROVAL, IF ANY:

Submit to Appropriate  
District Office  
State Lease - 4 copies  
Fee Lease - 3 copies

State of New Mexico  
Energy, Minerals and Natural Resources Department

Form C-102  
Revised 1-1-89

OIL CONSERVATION DIVISION

P.O. Box 2088  
Santa Fe, New Mexico 87504-2088

DISTRICT I  
P.O. Box 1980, Hobbs, NM 88240

DISTRICT II  
P.O. Drawer DD, Artesia, NM 88210

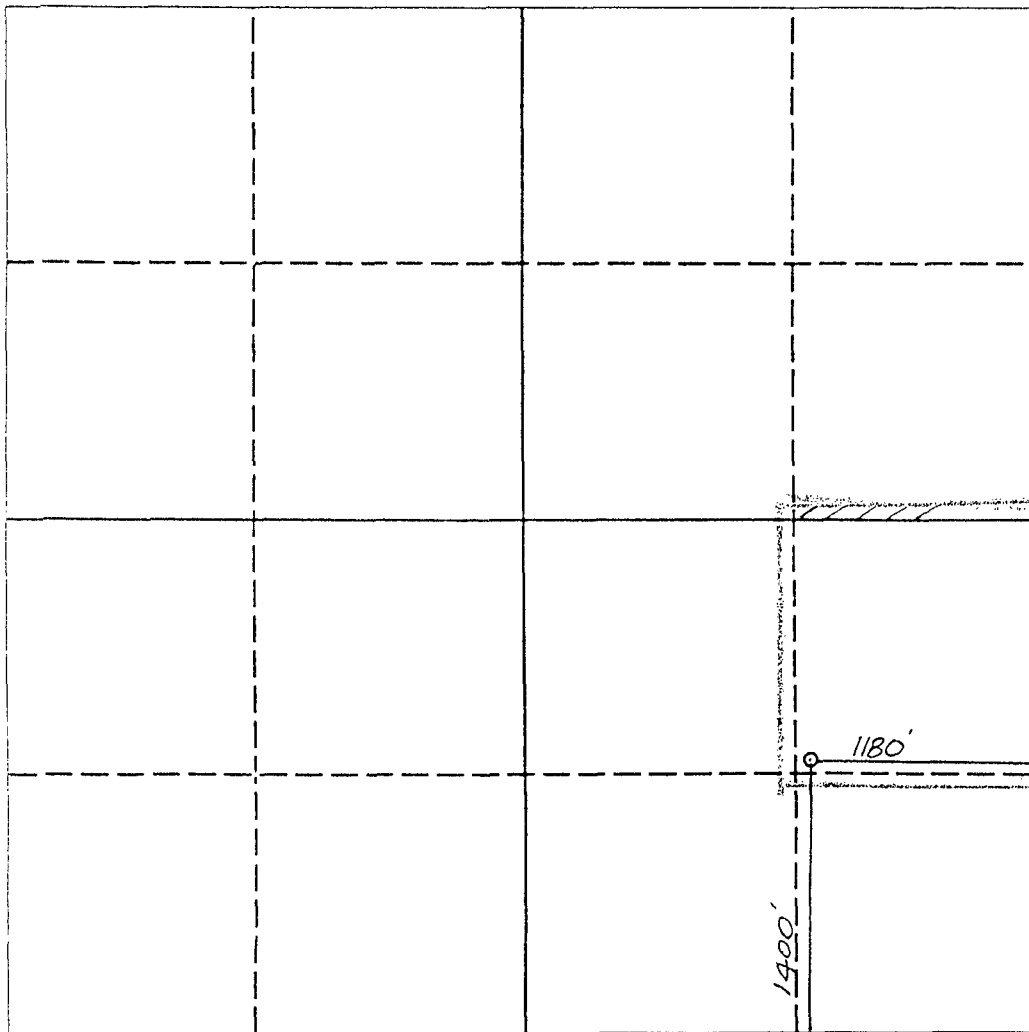
DISTRICT III  
1000 Rio Brazos Rd., Aztec, NM 87410

WELL LOCATION AND ACREAGE DEDICATION PLAT

All Distances must be from the outer boundaries of the section

Operator <b>SDX RESOURCES, INC.</b>			Lease <b>EAST MILLMAN UNIT</b>		Well No. <b>207</b>
Unit Letter <b>I</b>	Section <b>14</b>	Township <b>19 SOUTH</b>	Range <b>28 EAST</b>	County <b>EDDY COUNTY, NM</b>	
Actual Footage Location of Well: <b>1400</b> feet from the <b>SOUTH</b> line and <b>1180</b> feet from the <b>EAST</b> line					
Ground level Elev. <b>3391.</b>	Producing Formation <b>Qn - Gk - SA</b>	Pool <b>E. Millman Qn - Gk - SA</b>	Dedicated Acreage: <b>40</b> Acres		

- Outline the acreage dedicated to the subject well by colored pencil or hachure marks on the plat below.
- If more than one lease is dedicated to the well, outline each and identify the ownership thereof (both as to working interest and royalty).
- If more than one lease of different ownership is dedicated to the well, have the interest of all owners been consolidated by communitization, unitization, force-pooling, etc.?  
☐ Yes ☐ No If answer is "yes" type of consolidation \_\_\_\_\_  
If answer is "no" list the owners and tract descriptions which have actually been consolidated. (Use reverse side of this form if necessary.) \_\_\_\_\_  
No allowable will be assigned to the well until all interests have been consolidated (by communitization, unitization, forced-pooling, or otherwise) or until a non-standard unit, eliminating such interest, has been approved by the Division.



OPERATOR CERTIFICATION

I hereby certify that the information contained herein is true and complete to the best of my knowledge and belief.

Signature  
*Chuck Morgan*  
Printed Name  
**Chuck Morgan**  
Position  
**Engr.**  
Company  
**SDX Resources**  
Date  
**5/24/93**

SURVEYOR CERTIFICATION

I hereby certify that the well location shown on this plat was plotted from field notes of actual surveys made by me or under my supervision, and that the same is true and correct to the best of my knowledge and belief.

Date Surveyed  
**MAY 21, 1993**  
Signature  
*Ed D. Eddy*  
Professional Surveyor  
**NEW MEXICO**  
**REGISTERED PROFESSIONAL SURVEYOR**  
**ENGINEER**  
**5412**  
**NM PE&PS NO. 5412**

0 330 660 990 1320 1650 1980 2310 2640 2000 1500 1000 500 0

Submit to Appropriate  
District Office  
State Lease - 6 copies  
Fee Lease - 5 copies

State of New Mexico  
Energy, Minerals and Natural Resources Department

Form C-101  
Revised 1-1-89

OIL CONSERVATION DIVISION

P.O. Box 2088  
Santa Fe, New Mexico 87504-2088

DISTRICT I  
P.O. Box 1980, Hobbs, NM 88240

DISTRICT II  
P.O. Drawer DD, Artesia, NM 88210

DISTRICT III  
1000 Rio Brazos Rd., Aztec, NM 87410

API NO. (assigned by OCD on New Wells)

5. Indicate Type of Lease  
STATE ☒ FEE ☐

6. State Oil & Gas Lease No.  
648

APPLICATION FOR PERMIT TO DRILL, DEEPEN, OR PLUG BACK

1a. Type of Work:

DRILL ☒ RE-ENTER ☐ DEEPEN ☐ PLUG BACK ☐

b. Type of Well:

OIL WELL ☒ GAS WELL ☐ OTHER ☐ SINGLE ZONE ☐ MULTIPLE ZONE ☒

2. Name of Operator

SDX RESOURCES, INC.

3. Address of Operator

P.O. BOX 5061 Midland, TX. 79704-5061

7. Lease Name or Unit Agreement Name

East Millman

8. Well No.

208

9. Pool name or Wildcat

E. Millman Q-G-SA

4. Well Location

Unit Letter H : 1310 Feet From The East Line and 1360 Feet From The North Line

Section 22 Township 19-S Range 28-E NMPM Eddy County

10. Proposed Depth

2900

11. Formation

Grayburg

12. Rotary or C.T.

Rot

13. Elevations (Show whether DF, RT, GR, etc.)

3405 GR

14. Kind & Status Plug. Bond

Blanket

15. Drilling Contractor

Capstar

16. Approx. Date Work will start

June, 1st

PROPOSED CASING AND CEMENT PROGRAM

SIZE OF HOLE	SIZE OF CASING	WEIGHT PER FOOT	SETTING DEPTH	SACKS OF CEMENT	EST. TOP
12-1/4"	8-5/8"	24#	380' +	300	surf
7-7/8"	5-1/2"	15.50#	2900'	500	surf

Plan to drill a 12-1/4" hole to approx. 380'; set 8-5/8" surface casing. Circulate "C" cement. Drill 7-7/8" hole to TD. Run open hole logs (LDT-CNL-GR & DLL). Run 5-1/2" casing and circulate 50/50 POZ "C" cement. Perforate the Grayburg-Queen and stimulate as necessary for optimum production.

Mud Program: Fresh water mud 0'-350'  
Salt water mud 350'-TD.

IN ABOVE SPACE DESCRIBE PROPOSED PROGRAM: IF PROPOSAL IS TO DEEPEN OR PLUG BACK, GIVE DATA ON PRESENT PRODUCTIVE ZONE AND PROPOSED NEW PRODUCTIVE ZONE. GIVE BLOWOUT PREVENTER PROGRAM, IF ANY.

I hereby certify that the information above is true and complete to the best of my knowledge and belief.

SIGNATURE

Chuck Morgan

TITLE

Engr.

DATE

5/24/93

TYPE OR PRINT NAME

Chuck Morgan

TELEPHONE NO.

748-9724

(This space for State Use)

APPROVED BY

TITLE

DATE

CONDITIONS OF APPROVAL, IF ANY:

Submit to Appropriate  
District Office  
State Lease - 4 copies  
Fee Lease - 3 copies

State of New Mexico  
Energy, Minerals and Natural Resources Department

Form C-102  
Revised 1-1-89

OIL CONSERVATION DIVISION

P.O. Box 2088  
Santa Fe, New Mexico 87504-2088

DISTRICT I  
P.O. Box 1980, Hobbs, NM 88240

DISTRICT II  
P.O. Drawer DD, Artesia, NM 88210

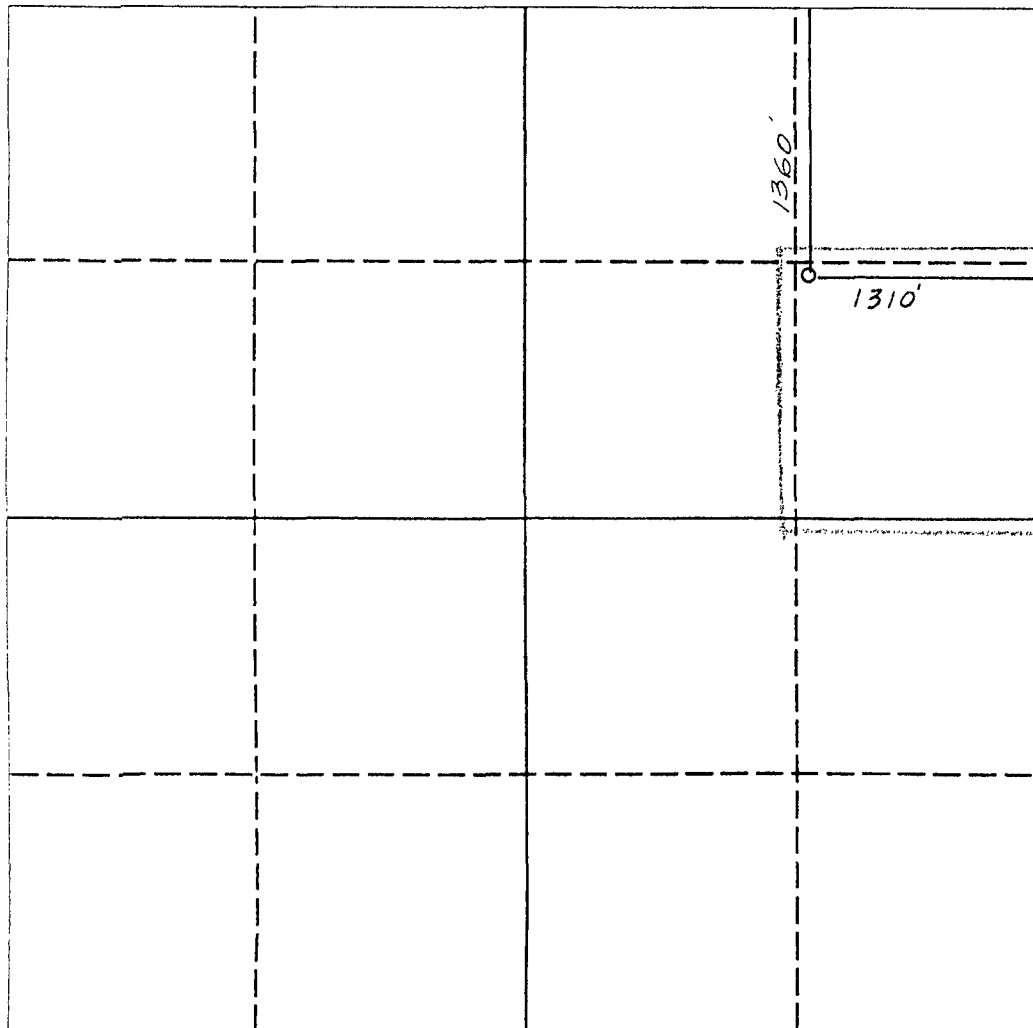
DISTRICT III  
1000 Rio Brazos Rd., Aztec, NM 87410

WELL LOCATION AND ACREAGE DEDICATION PLAT

All Distances must be from the outer boundaries of the section

Operator <b>SDX RESOURCES, INC.</b>			Lease <b>EAST MILLMAN UNIT</b>		Well No. <b>208</b>
Unit Letter <b>H</b>	Section <b>22</b>	Township <b>19 SOUTH</b>	Range <b>28 EAST</b>	County <b>EDDY COUNTY, NM</b>	
Actual Footage Location of Well: <b>1310</b> feet from the <b>EAST</b> line and <b>1360</b> feet from the <b>NORTH</b> line					
Ground level Elev. <b>3405.</b>	Producing Formation <b>Qn-Gb-SA</b>		Pool <b>E. Millman Qn-Gb-SA</b>	Dedicated Acreage: <b>40</b> Acres	

- Outline the acreage dedicated to the subject well by colored pencil or hachure marks on the plat below.
- If more than one lease is dedicated to the well, outline each and identify the ownership thereof (both as to working interest and royalty).
- If more than one lease of different ownership is dedicated to the well, have the interest of all owners been consolidated by communitization, unitization, force-pooling, etc.?  
☐ Yes ☐ No If answer is "yes" type of consolidation \_\_\_\_\_  
If answer is "no" list the owners and tract descriptions which have actually been consolidated. (Use reverse side of this form if necessary.)  
No allowable will be assigned to the well until all interests have been consolidated (by communitization, unitization, forced-pooling, or otherwise) or until a non-standard unit, eliminating such interest, has been approved by the Division.



OPERATOR CERTIFICATION

I hereby certify that the information contained herein is true and complete to the best of my knowledge and belief.

Signature *Chuck Morgan*  
Printed Name **Chuck Morgan**  
Position **Engr.**  
Company **SDX Resources**  
Date **5/24/92**

SURVEYOR CERTIFICATION

I hereby certify that the well location shown on this plat was plotted from field notes of actual surveys made by me or under my supervision, and that the same is true and correct to the best of my knowledge and belief.

Date Surveyed **MAY 22, 1993**  
Signature & Seal of Professional Surveyor  
  
Certificate No. **5412**  
NM PE&S NO. **5412**

0 330 660 990 1320 1650 1980 2310 2640 2000 1500 1000 500 0

Submit to Appropriate  
District Office  
State Lease - 6 copies  
Fee Lease - 5 copies

State of New Mexico  
Energy, Minerals and Natural Resources Department

Form C-101  
Revised 1-1-89

OIL CONSERVATION DIVISION

DISTRICT I  
P.O. Box 1980, Hobbs, NM 88240

DISTRICT II  
P.O. Drawer DD, Artesia, NM 88210

DISTRICT III  
1000 Rio Brazos Rd., Aztec, NM 87410

P.O. Box 2088  
Santa Fe, New Mexico 87504-2088

API NO. (assigned by OCD on New Wells)

5. Indicate Type of Lease  
STATE ☒ FEE ☐

6. State Oil & Gas Lease No.  
648

APPLICATION FOR PERMIT TO DRILL, DEEPEN, OR PLUG BACK

1a. Type of Work:

DRILL ☒ RE-ENTER ☐ DEEPEN ☐ PLUG BACK ☐

b. Type of Well:

OIL WELL ☒ GAS WELL ☐ OTHER ☐

SINGLE ZONE ☐ MULTIPLE ZONE ☒

7. Lease Name or Unit Agreement Name

East Millman

2. Name of Operator

SDX RESOURCES, INC.

8. Well No.  
209

3. Address of Operator

P.O. BOX 5061 Midland, TX. 79704-5061

9. Pool name or Wildcat  
E. Millman Q-G-SA

4. Well Location

Unit Letter H : 10 Feet From The East Line and 1390 Feet From The North Line

Section 22 Township 19-S Range 28-E NMPM Eddy County

10. Proposed Depth  
2900

11. Formation  
Grayburg

12. Rotary or C.T.  
Rot

13. Elevations (Show whether DF, RT, GR, etc.)

3409 GR

14. Kind & Status Plug. Bond

Blanket

15. Drilling Contractor

Capstar

16. Approx. Date Work will start

June, 1st

17.

PROPOSED CASING AND CEMENT PROGRAM

SIZE OF HOLE	SIZE OF CASING	WEIGHT PER FOOT	SETTING DEPTH	SACKS OF CEMENT	EST. TOP
12-1/4"	8-5/8"	24#	380' +	300	surf
7-7/8"	5-1/2"	15.50#	2900'	500	surf

Plan to drill a 12-1/4" hole to approx. 380'; set 8-5/8" surface casing. Circulate "C" cement. Drill 7-7/8" hole to TD. Run open hole logs (LDT-CNL-GR & DLL). Run 5-1/2" casing and circulate 50/50 POZ "C" cement. Perforate the Grayburg-Queen and stimulate as necessary for optimum production.

Mud Program: Fresh water mud 0'-350'  
Salt water mud 350'-TD.

IN ABOVE SPACE DESCRIBE PROPOSED PROGRAM: IF PROPOSAL IS TO DEEPEN OR PLUG BACK, GIVE DATA ON PRESENT PRODUCTIVE ZONE AND PROPOSED NEW PRODUCTIVE ZONE. GIVE BLOWOUT PREVENTER PROGRAM, IF ANY.

I hereby certify that the information above is true and complete to the best of my knowledge and belief.

SIGNATURE

*Chuck Morgan*

TITLE

*Eng.*

DATE

*5/24/93*

TYPE OR PRINT NAME

*Chuck Morgan*

TELEPHONE NO.

*748-9724*

(This space for State Use)

APPROVED BY

TITLE

DATE

CONDITIONS OF APPROVAL, IF ANY:

Submit to Appropriate  
District Office  
State Lease - 4 copies  
Fee Lease - 3 copies

State of New Mexico  
Energy, Minerals and Natural Resources Department

Form C-102  
Revised 1-1-89

OIL CONSERVATION DIVISION

DISTRICT I  
P.O. Box 1980, Hobbs, NM 88240

P.O. Box 2088  
Santa Fe, New Mexico 87504-2088

DISTRICT II  
P.O. Drawer DD, Artesia, NM 88210

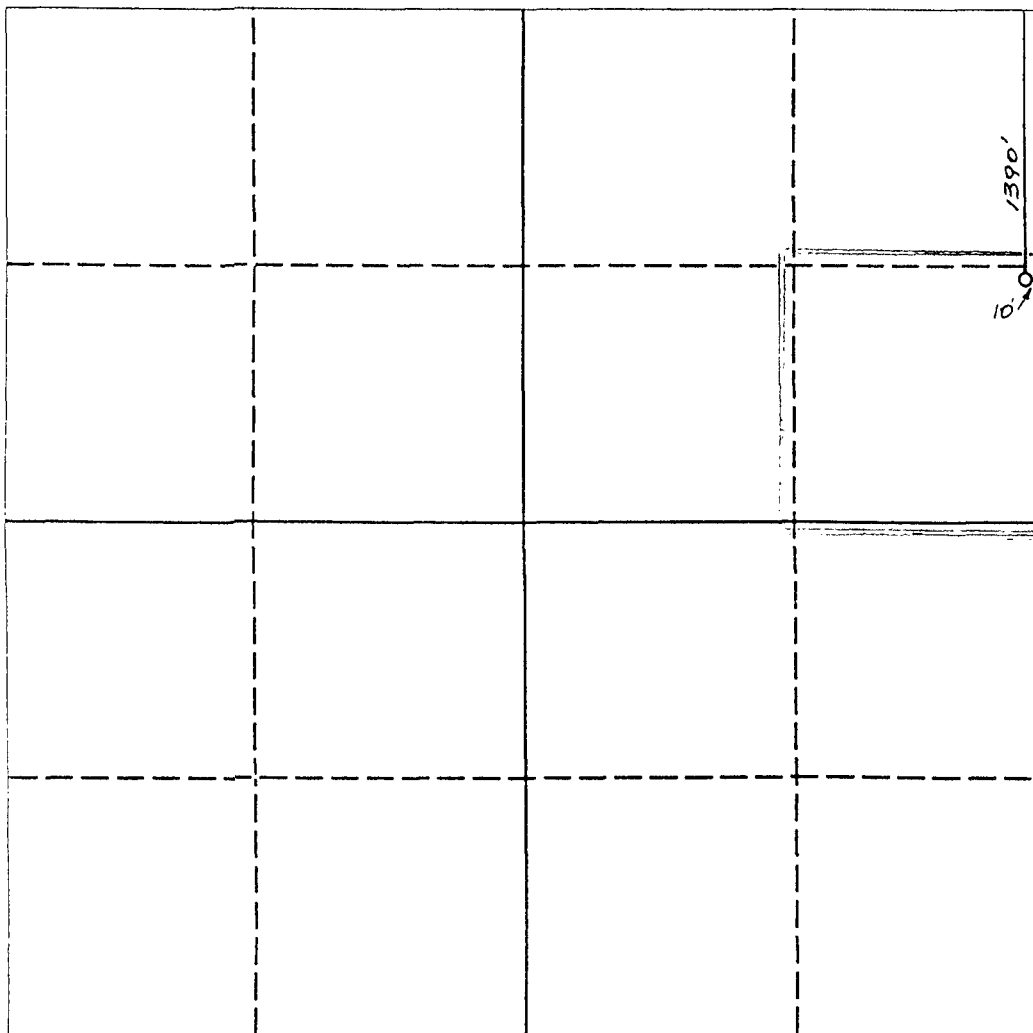
DISTRICT III  
1000 Rio Brazos Rd., Aztec, NM 87410

WELL LOCATION AND ACREAGE DEDICATION PLAT

All Distances must be from the outer boundaries of the section

Operator <b>SDX RESOURCES, INC.</b>			Lease <b>EAST MILLMAN UNIT</b>		Well No. <b>209</b>
Unit Letter <b>H</b>	Section <b>22</b>	Township <b>19 SOUTH</b>	Range <b>28 EAST</b>	County <b>EDDY COUNTY, NM</b>	
Actual Footage Location of Well: <b>1390</b> feet from the <b>NORTH</b> line and <b>10</b> feet from the <b>EAST</b> line					
Ground level Elev. <b>3409.</b>	Producing Formation <b>Qn - Gb - SA.</b>		Pool <b>E. Millman Qn - Gb - SA</b>	Dedicated Acreage: <b>40</b> Acres	

- Outline the acreage dedicated to the subject well by colored pencil or hachure marks on the plat below.
- If more than one lease is dedicated to the well, outline each and identify the ownership thereof (both as to working interest and royalty).
- If more than one lease of different ownership is dedicated to the well, have the interest of all owners been consolidated by communitization, unitization, force-pooling, etc.?  
☐ Yes ☐ No If answer is "yes" type of consolidation \_\_\_\_\_  
If answer is "no" list the owners and tract descriptions which have actually been consolidated. (Use reverse side of this form if necessary.) \_\_\_\_\_  
No allowable will be assigned to the well until all interests have been consolidated (by communitization, unitization, forced-pooling, or otherwise) or until a non-standard unit, eliminating such interest, has been approved by the Division.



OPERATOR CERTIFICATION

I hereby certify that the information contained herein is true and complete to the best of my knowledge and belief.

Signature *Chuck Morgan*  
Printed Name **Chuck Morgan**  
Position **Engr.**  
Company **SDX Resources**  
Date **5/24/93**

SURVEYOR CERTIFICATION

I hereby certify that the well location shown on this plat was plotted from field notes of actual surveys made by me or under my supervision, and that the same is true and correct to the best of my knowledge and belief.

Date Surveyed **MAY 22 1993**  
Signature & Seal of Professional Surveyor  
  
Certificate No. **5412**  
NM PE&PS NO. **5412**



Submit to Appropriate  
District Office  
State Lease - 6 copies  
Fee Lease - 5 copies

State of New Mexico  
Energy, Minerals and Natural Resources Department

Form C-101  
Revised 1-1-89

OIL CONSERVATION DIVISION

P.O. Box 2088  
Santa Fe, New Mexico 87504-2088

DISTRICT I  
P.O. Box 1980, Hobbs, NM 88240

DISTRICT II  
P.O. Drawer DD, Artesia, NM 88210

DISTRICT III  
1000 Rio Brazos Rd., Aztec, NM 87410

API NO. (assigned by OCD on New Wells)

5. Indicate Type of Lease  
STATE ☒ FEE ☐

6. State Oil & Gas Lease No.  
648

APPLICATION FOR PERMIT TO DRILL, DEEPEN, OR PLUG BACK

1a. Type of Work:

DRILL ☒ RE-ENTER ☐ DEEPEN ☐ PLUG BACK ☐

b. Type of Well:

OIL WELL ☒ GAS WELL ☐ OTHER ☐ SINGLE ZONE ☐ MULTIPLE ZONE ☒

7. Lease Name or Unit Agreement Name

East Millman

2. Name of Operator

SDX RESOURCES, INC.

8. Well No.  
212

3. Address of Operator

P.O. BOX 5061 Midland, TX. 79704-5061

9. Pool name or Wildcat  
E. Millman Q-G-SA

4. Well Location

Unit Letter p : 1310 Feet From The East Line and 1310 Feet From The South Line

Section 15 Township 19-S Range 28-E NMPM Eddy County

10. Proposed Depth  
2900

11. Formation  
Grayburg

12. Rotary or C.T.  
Rot

13. Elevations (Show whether DF, RT, GR, etc.)

3438 GR

14. Kind & Status Plug. Bond

Blanket

15. Drilling Contractor

Capstar

16. Approx. Date Work will start

June, 1st

17. PROPOSED CASING AND CEMENT PROGRAM

SIZE OF HOLE	SIZE OF CASING	WEIGHT PER FOOT	SETTING DEPTH	SACKS OF CEMENT	EST. TOP
12-1/4"	8-5/8"	24#	380'±	300	surf
7-7/8"	5-1/2"	15.50#	2900'	500	surf

Plan to drill a 12-1/4" hole to approx. 380'; set 8-5/8" surface casing. Circulate "C" cement. Drill 7-7/8" hole to TD. Run open hole logs (LDT-CNL-GR & DLL). Run 5-1/2" casing and circulate 50/50 POZ "C" cement. Perforate the Grayburg-Queen and stimulate as necessary for optimum production.

Mud Program: Fresh water mud 0'-350'.  
Salt water mud 350'-TD.

IN ABOVE SPACE DESCRIBE PROPOSED PROGRAM: IF PROPOSAL IS TO DEEPEN OR PLUG BACK, GIVE DATA ON PRESENT PRODUCTIVE ZONE AND PROPOSED NEW PRODUCTIVE ZONE. GIVE BLOWOUT PREVENTER PROGRAM, IF ANY.

I hereby certify that the information above is true and complete to the best of my knowledge and belief.

SIGNATURE Chuck Morgan TITLE Engr. DATE 5/24/93

TYPE OR PRINT NAME Chuck Morgan TELEPHONE NO. 748-9224

(This space for State Use)

APPROVED BY \_\_\_\_\_ TITLE \_\_\_\_\_ DATE \_\_\_\_\_

CONDITIONS OF APPROVAL, IF ANY:

Submit to Appropriate  
District Office  
State Lease - 4 copies  
Fee Lease - 3 copies

State of New Mexico  
Energy, Minerals and Natural Resources Department

Form C-102  
Revised 1-1-89

OIL CONSERVATION DIVISION

DISTRICT I  
P.O. Box 1980, Hobbs, NM 88240

P.O. Box 2088  
Santa Fe, New Mexico 87504-2088

DISTRICT II  
P.O. Drawer DD, Artesia, NM 88210

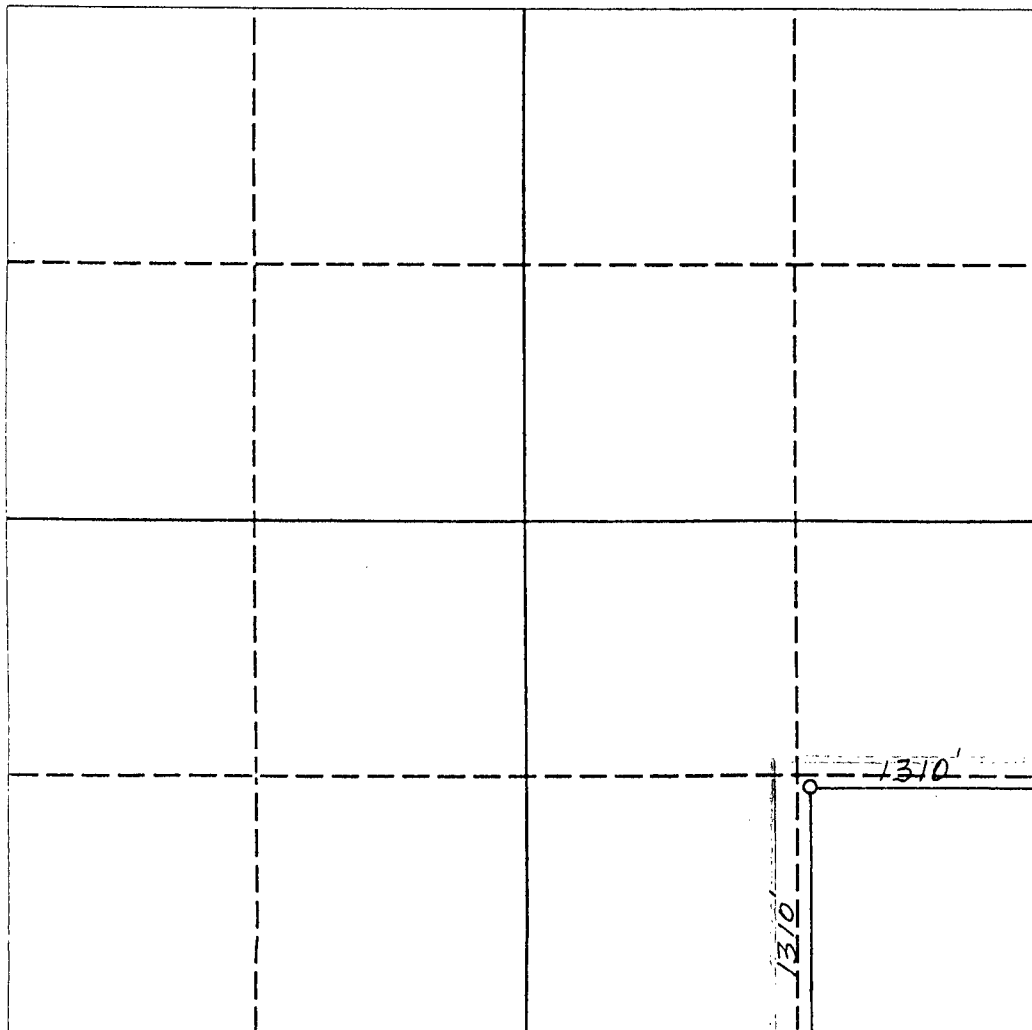
DISTRICT III  
1000 Rio Brazos Rd., Aztec, NM 87410

WELL LOCATION AND ACREAGE DEDICATION PLAT

All Distances must be from the outer boundaries of the section

Operator <b>SDX RESOURCES, INC.</b>			Lease <b>EAST MILLMAN UNIT</b>		Well No. <b>212</b>
Unit Letter <b>P</b>	Section <b>15</b>	Township <b>19 SOUTH</b>	Range <b>28 EAST</b>	County <b>EDDY COUNTY, NM</b>	
Actual Footage Location of Well: <b>1310</b> feet from the <b>SOUTH</b> line and <b>1310</b> feet from the <b>EAST</b> line					
Ground level Elev. <b>3438.</b>	Producing Formation <b>Qn-Gb-SA.</b>		Pool <b>E. Millman Qn-Gb-SA.</b>	Dedicated Acreage: <b>40</b> Acres	

- Outline the acreage dedicated to the subject well by colored pencil or hachure marks on the plat below.
- If more than one lease is dedicated to the well, outline each and identify the ownership thereof (both as to working interest and royalty).
- If more than one lease of different ownership is dedicated to the well, have the interest of all owners been consolidated by communitization, unitization, force-pooling, etc.?  
☐ Yes ☐ No If answer is "yes" type of consolidation \_\_\_\_\_  
If answer is "no" list the owners and tract descriptions which have actually been consolidated. (Use reverse side of this form if necessary). \_\_\_\_\_  
No allowable will be assigned to the well until all interests have been consolidated (by communitization, unitization, forced-pooling, or otherwise) or until a non-standard unit, eliminating such interest, has been approved by the Division.



OPERATOR CERTIFICATION

I hereby certify that the information contained herein is true and complete to the best of my knowledge and belief.

Signature  
*Chuck Morgan*  
Printed Name  
**Chuck Morgan**  
Position  
**Engr.**  
Company  
**SDX Resources**  
Date  
**5/24/93**

SURVEYOR CERTIFICATION

I hereby certify that the well location shown on this plat was plotted from field notes of actual surveys made by me or under my supervision, and that the same is true and correct to the best of my knowledge and belief.

Date Surveyed  
**MAY 22, 1993**

Signature & Seal of  
Professional Surveyor  
**DAVID EDDY**  
**NEW MEXICO**  
**5412**  
**PROFESSIONAL ENGINEER**  
**5412**  
**PE&PS NO. 5412**

0 330 660 990 1320 1650 1980 2310 2640 2000 1500 1000 500 0

Submit to Appropriate  
District Office  
State Lease - 6 copies  
Fee Lease - 5 copies

State of New Mexico  
Energy, Minerals and Natural Resources Department

Form C-101  
Revised 1-1-89

OIL CONSERVATION DIVISION

DISTRICT I  
P.O. Box 1980, Hobbs, NM 88240

DISTRICT II  
P.O. Drawer DD, Artesia, NM 88210

DISTRICT III  
1000 Rio Brazos Rd., Aztec, NM 87410

P.O. Box 2088  
Santa Fe, New Mexico 87504-2088

API NO. (assigned by OCD on New Wells)

5. Indicate Type of Lease

STATE ☒

FEE ☐

6. State Oil & Gas Lease No.  
648

APPLICATION FOR PERMIT TO DRILL, DEEPEN, OR PLUG BACK

1a. Type of Work:

DRILL ☒

RE-ENTER ☐

DEEPEN ☐

PLUG BACK ☐

b. Type of Well:

OIL  
WELL ☒

GAS  
WELL ☐

OTHER ☐

SINGLE  
ZONE ☐

MULTIPLE  
ZONE ☒

7. Lease Name or Unit Agreement Name

East Millman

2. Name of Operator

SDX RESOURCES, INC.

8. Well No.  
213

3. Address of Operator

P.O. BOX 5061 Midland, TX. 79704-5061

9. Pool name or Wildcat  
E. Millman Q-G-SA

4. Well Location

Unit Letter G : 1330 Feet From The East Line and 2630 Feet From The North Line

Section 15 Township 19-S Range 28-E NMPM Eddy County

10. Proposed Depth  
2900

11. Formation  
Grayburg

12. Rotary or C.T.  
Rot

13. Elevations (Show whether DF, RT, GR, etc.)  
3482 GR

14. Kind & Status Plug. Bond  
Blanket

15. Drilling Contractor  
Capstar

16. Approx. Date Work will start  
June, 1st

PROPOSED CASING AND CEMENT PROGRAM

SIZE OF HOLE	SIZE OF CASING	WEIGHT PER FOOT	SETTING DEPTH	SACKS OF CEMENT	EST. TOP
12-1/4"	8-5/8"	24#	380' +	300	surf
7-7/8"	5-1/2"	15.50#	2900'	500	surf

Plan to drill a 12-1/4" hole to approx. 380'; set 8-5/8" surface casing. Circulate "C" cement. Drill 7-7/8" hole to TD. Run open hole logs (LDT-CNL-GR & DLL). Run 5-1/2" casing and circulate 50/50 POZ "C" cement. Perforate the Grayburg-Queen and stimulate as necessary for optimum production.

Mud Program: Fresh water mud 0'-350'  
Salt water mud 350'-TD.

IN ABOVE SPACE DESCRIBE PROPOSED PROGRAM: IF PROPOSAL IS TO DEEPEN OR PLUG BACK, GIVE DATA ON PRESENT PRODUCTIVE ZONE AND PROPOSED NEW PRODUCTIVE ZONE. GIVE BLOWOUT PREVENTER PROGRAM, IF ANY.

I hereby certify that the information above is true and complete to the best of my knowledge and belief.

SIGNATURE

*Chuck Morgan*

TITLE

*Engr.*

DATE

*5/24/93*

TYPE OR PRINT NAME

*Chuck Morgan*

TELEPHONE NO.

*748-9724*

(This space for State Use)

APPROVED BY

TITLE

DATE

CONDITIONS OF APPROVAL, IF ANY:

Submit to Appropriate  
District Office  
State Lease - 4 copies  
Fee Lease - 3 copies

State of New Mexico  
Energy, Minerals and Natural Resources Department

Form C-102  
Revised 1-1-89

OIL CONSERVATION DIVISION

P.O. Box 2088  
Santa Fe, New Mexico 87504-2088

DISTRICT I  
P.O. Box 1980, Hobbs, NM 88240

DISTRICT II  
P.O. Drawer DD, Artesia, NM 88210

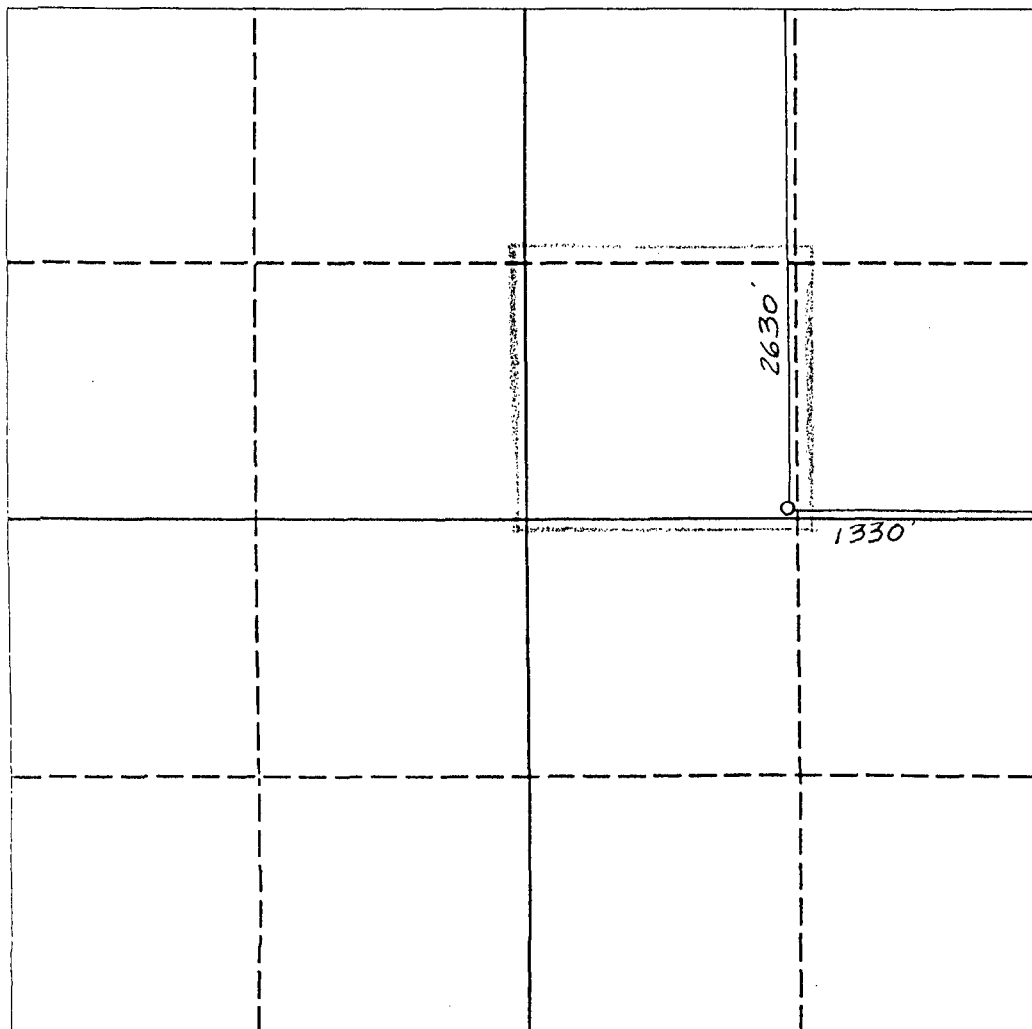
DISTRICT III  
1000 Rio Brazos Rd., Aztec, NM 87410

WELL LOCATION AND ACREAGE DEDICATION PLAT

All Distances must be from the outer boundaries of the section

Operator <b>SDX RESOURCES, INC.</b>			Lease <b>EAST MILLMAN UNIT</b>		Well No. <b>213</b>
Unit Letter <b>G</b>	Section <b>15</b>	Township <b>19 SOUTH</b>	Range <b>28 EAST</b>	County <b>EDDY COUNTY, NM</b>	
Actual Footage Location of Well: <b>1330</b> feet from the <b>EAST</b> line and <b>2630</b> feet from the <b>NORTH</b> line					
Ground level Elev. <b>3462.</b>	Producing Formation <b>Qn - Gb - SA</b>		Pool <b>E. Millman Qn - Gb - SA</b>	Dedicated Acreage: <b>40</b> Acres	

- Outline the acreage dedicated to the subject well by colored pencil or hatchure marks on the plat below.
- If more than one lease is dedicated to the well, outline each and identify the ownership thereof (both as to working interest and royalty).
- If more than one lease of different ownership is dedicated to the well, have the interest of all owners been consolidated by communitization, unitization, force-pooling, etc.?  
☐ Yes ☐ No If answer is "yes" type of consolidation \_\_\_\_\_  
If answer is "no" list the owners and tract descriptions which have actually been consolidated. (Use reverse side of this form if necessary.)  
No allowable will be assigned to the well until all interests have been consolidated (by communitization, unitization, forced-pooling, or otherwise) or until a non-standard unit, eliminating such interest, has been approved by the Division.



OPERATOR CERTIFICATION

I hereby certify that the information contained herein is true and complete to the best of my knowledge and belief.

Signature *Chuck Morgan*  
Printed Name **Chuck Morgan**  
Position **Engr.**  
Company **SDX Resources**  
Date **5/24/93**

SURVEYOR CERTIFICATION

I hereby certify that the well location shown on this plat was plotted from field notes of actual surveys made by me or under my supervision, and that the same is true and correct to the best of my knowledge and belief.

Date Surveyed **MAY 22, 1993**  
Signature & Seal of Professional Surveyor  
  
Certificate No. **5412**  
NM PE&S NO. **5412**

0 330 660 990 1320 1650 1980 2310 2640 2000 1500 1000 500 0

