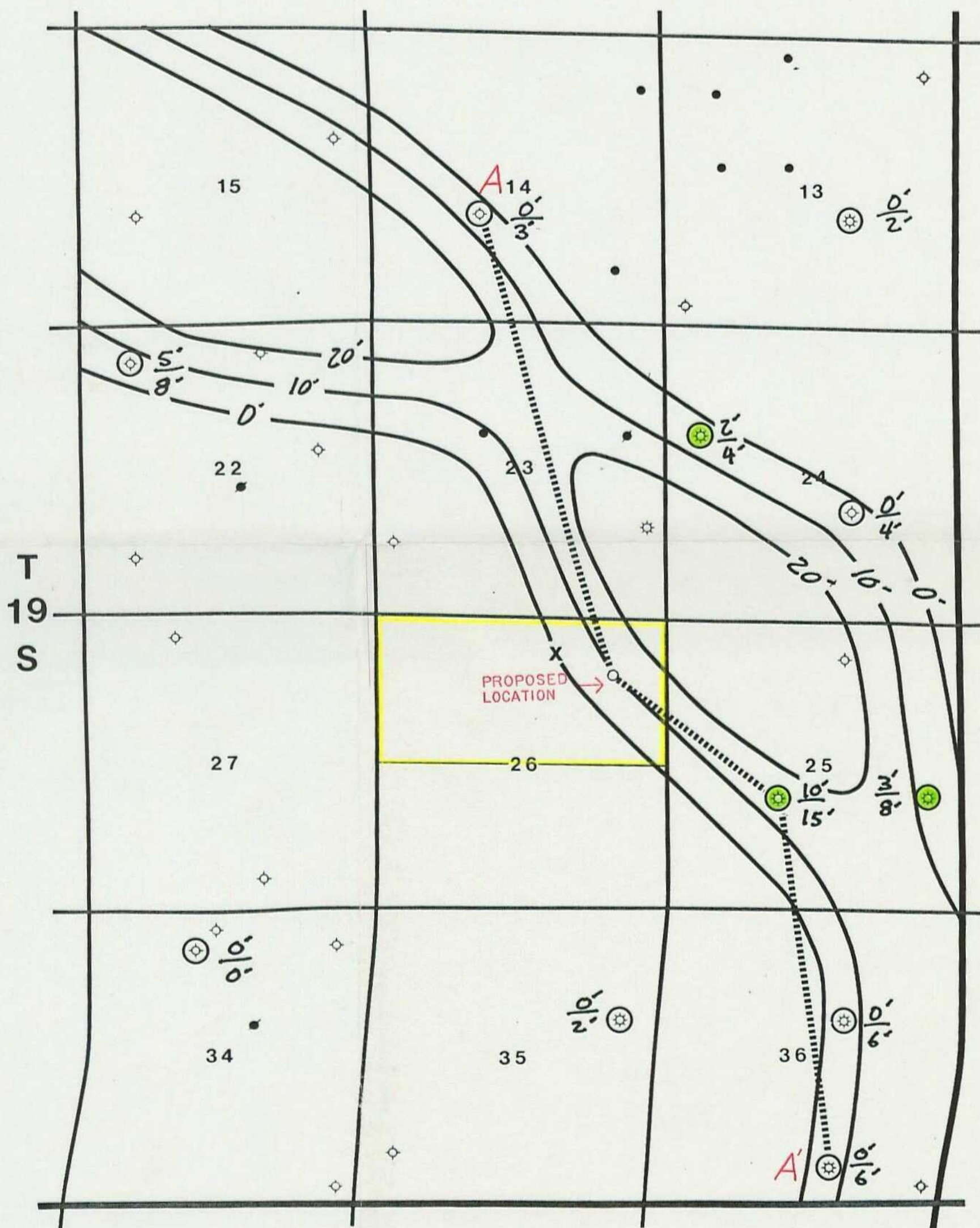


R 2 7 E



- MORROW PENETRATIONS
- ZONE PRODUCER



MEWBOURNE OIL COMPANY
MIDLAND, TEXAS DISTRICT

ANGELL RANCH PROSPECT
EDDY COUNTY, NEW MEXICO

MIDDLE MORROW GREEN ZONE
GROSS SAND ISOPACH

NET $\frac{0'}{2'} \geq 7\%$ C.I. = 10'
GROSS SD

EXHIBIT
B-3

MAY 1992

SCALE 1"=2000'

DEXTER HARMON