

**marbob**  
energy corporation

OIL CONSERVATION DIVISION  
RECEIVED

'93 OCT 21 AM 8 59

October 18, 1993

William LeMay, Director  
Oil Conservation Division  
P. O. Box 2088  
Santa Fe, New Mexico 87504-2088

Attention: Mr. Mike Stogner

RE: Unorthodox Well Location

Dear Mr. Stogner:

Marbob Energy Corporation respectfully requests an administrative approval without notice and hearing of two unorthodox well locations pursuant to Rule 104, Section F (1) of the New Mexico Oil Conservation Division. The well locations legal descriptions are as follows:

Burch-Keely Unit No. 220

1530 feet from the South line,  
660 feet from the West line  
Section 19, Township 17 South,  
Range 30 East, Eddy County, New Mexico

Burch-Keely Unit No. 221

2360 feet from the South line,  
1360 feet from the East line,  
Section 24, Township 17 South,  
Range 29 East, Eddy County, New Mexico

Burch-Keely Unit No. 222

1078 feet from the South line,  
1491 feet from the East line,  
Section 24, Township 17 South,  
Range 29 East, Eddy County, New Mexico

The wells will be completed in the Grayburg San Andres formation in the Grayburg Jackson Seven Rivers Queen Grayburg San Andres Pool.

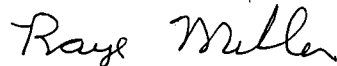
Attached to the application are the following Exhibits:

- A. Well location and Acreage Dedication Plat (form C-102) filed with the Carlsbad office of the Bureau of Land Management. (Exhibit A)
- B. A plat showing the proposed unorthodox location, the respective proration unit, and the offsetting proration units including their ownership. (Exhibit B)

Please note that Marbob Energy Corporation is the operator of all offsetting proration units in the Grayburg San Andres formation of the Grayburg Jackson Seven Rivers Queen Grayburg San Andres Pool and therefore, no other operators are required to be notified. The geological support for this application is the same as was presented in the case which resulted in Order No. R-7808 which is the offsetting acreage to this unit.

Thank you for your help in this matter. Should you have any further questions or be in need of any additional information, please contact me.

Sincerely,

A handwritten signature in cursive script that reads "Raye Miller".

Raye Miller  
Land Department

RM/mm  
Enclosures

Submit to Appropriate  
District Office  
State Lease - 4 copies  
Fee Lease - 3 copies

State of New Mexico  
Energy, Minerals and Natural Resources Department

Form C-102  
Revised 1-1-89

OIL CONSERVATION DIVISION

P.O. Box 2088  
Santa Fe, New Mexico 87504-2088

DISTRICT I

P.O. Box 1980, Hobbs, NM 88240

DISTRICT II

P.O. Drawer DD, Artesia, NM 88210

DISTRICT III

1000 Rio Brazos Rd., Aztec, NM 87410

WELL LOCATION AND ACREAGE DEDICATION PLAT

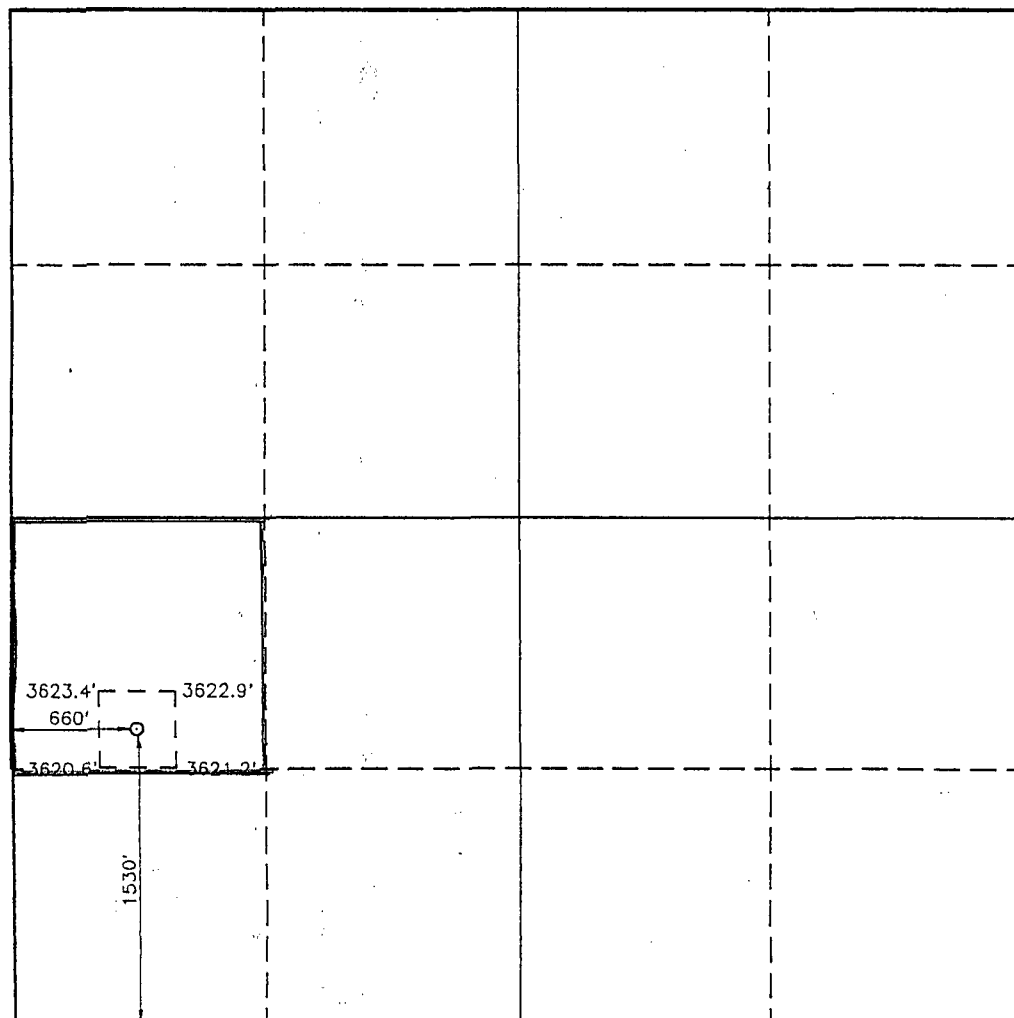
All Distances must be from the outer boundaries of the section

Operator MARBOB ENERGY CORP.			Lease BURCH-KEELY UNIT		Well No. 220
Unit Letter L	Section 19	Township 17 SOUTH	Range 30 EAST	NMPM	County EDDY
Actual Footage Location of Well: 1530' feet from the SOUTH line and 660 feet from the WEST line					
Ground Level Elev. 3622.2'	Producing Formation SAN ANDRES		Pool GRBG JACKSON SR Q GRBG SA		Dedicated Acreage: 40 Acres

1. Outline the acreage dedicated to the subject well by colored pencil or hachure marks on the plat below.
2. If more than one lease is dedicated to the well, outline each and identify the ownership thereof (both as to working interest and royalty).
3. If more than one lease of different ownership is dedicated to the well, have the interest of all owners been consolidated by communization, unitization, force-pooling, etc.?  
☐ Yes ☐ No If answer is "yes" type of consolidation \_\_\_\_\_

If answer is "no" list of owners and tract descriptions which have actually been consolidated. (Use reverse side of this form necessary.)

No allowable will be assigned to the well unit all interests have been consolidated (by communization, unitization, forced-pooling, otherwise) or until a non-standard unit, eliminating such interest, has been approved by the Division.



OPERATOR CERTIFICATION

I hereby certify the the information contained herein is true and complete to the best of my knowledge and belief.

Signature

Printed Name  
RHONDA NELSON

Position  
PRODUCTION CLERK

Company  
MARBOB ENERGY CORPORATION

Date  
OCTOBER 15, 1993

SURVEYOR CERTIFICATION

I hereby certify that the well location shown on this plat was plotted from field notes of actual surveys made by me or under my supervision, and that the same is true and correct to the best of my knowledge and belief.

Date Surveyed  
OCTOBER 12, 1993

Signature & Seal of  
Professional Surveyor



93-11-1978A



Submit to Appropriate  
District Office  
State Lease - 4 copies  
Fee Lease - 3 copies

State of New Mexico  
Energy, Minerals and Natural Resources Department

Form C-102  
Revised 1-1-89

OIL CONSERVATION DIVISION

P.O. Box 2088

Santa Fe, New Mexico 87504-2088

DISTRICT I

P.O. Box 1980, Hobbs, NM 88240

DISTRICT II

P.O. Drawer DD, Artesia, NM 88210

DISTRICT III

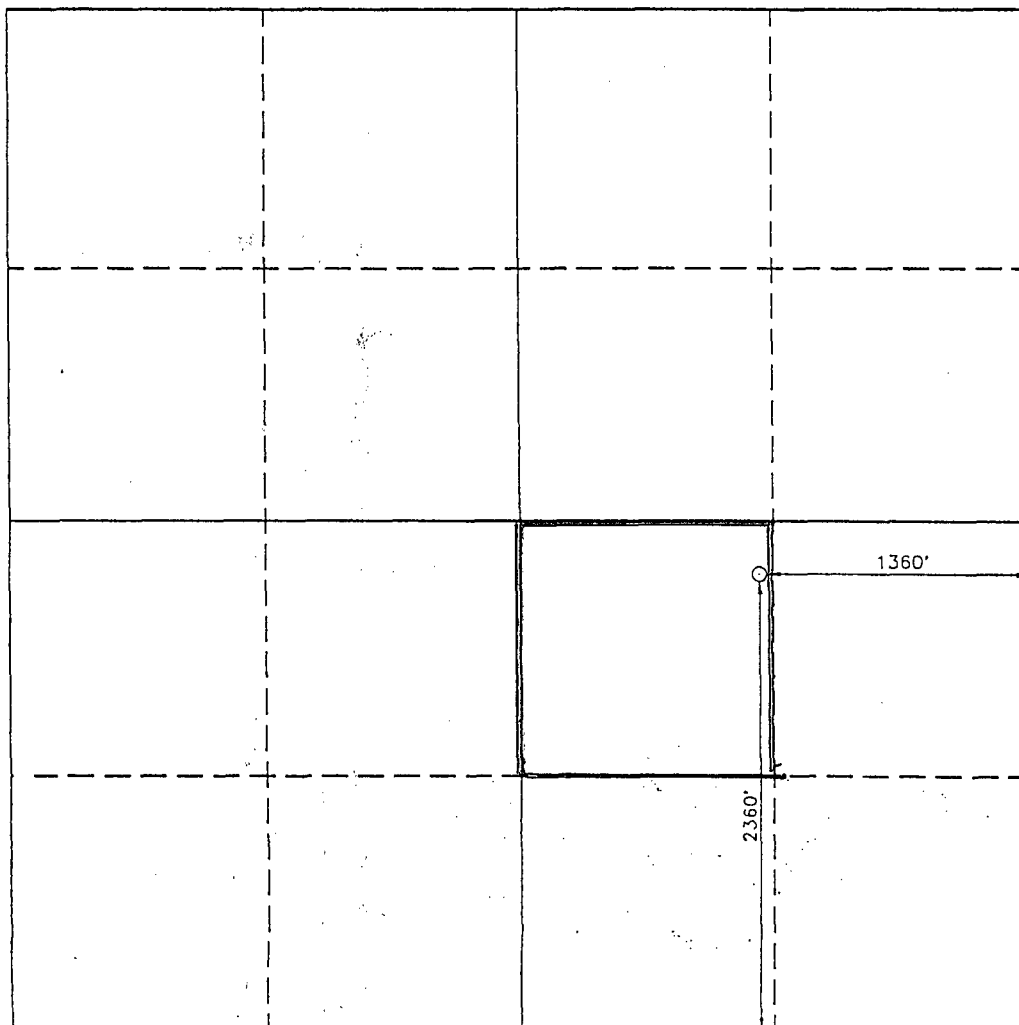
1000 Rio Brazos Rd., Aztec, NM 87410

WELL LOCATION AND ACREAGE DEDICATION PLAT

All Distances must be from the outer boundaries of the section

Operator MARBOB ENERGY CORP.			Lease BURCH-KEELY UNIT		Well No. 221
Unit Letter J	Section 24	Township 17 SOUTH	Range 29 EAST	NMPM	County EDDY
Actual Footage Location of Well: 1360 feet from the EAST line and 2360 feet from the SOUTH line					
Ground Level Elev. 3615.7'	Producing Formation San Andres		Pool Grbg Jackson SR Q Grbg SA		Dedicated Acreage: 40 Acres

- Outline the acreage dedicated to the subject well by colored pencil or hatchure marks on the plat below.
- If more than one lease is dedicated to the well, outline each and identify the ownership thereof (both as to working interest and royalty).
- If more than one lease of different ownership is dedicated to the well, have the interest of all owners been consolidated by communitization, unitization, force-pooling, etc.?  
☐ Yes ☐ No If answer is "yes" type of consolidation \_\_\_\_\_  
If answer is "no" list of owners and tract descriptions which have actually been consolidated. (Use reverse side of this form necessary.)  
No allowable will be assigned to the well unit all interests have been consolidated (by communitization, unitization, forced-pooling, otherwise) or until a non-standard unit, eliminating such interest, has been approved by the Division.



OPERATOR CERTIFICATION

I hereby certify the the information contained herein is true and complete to the best of my knowledge and belief.

Signature

Printed Name

Rhonda Nelson

Position

Production Clerk

Company

Marbob Energy Corporation

Date

October 13, 1993

SURVEYOR CERTIFICATION

I hereby certify that the well location shown on this plat was plotted from field notes of actual surveys made by me or under my supervision, and that the same is true and correct to the best of my knowledge and belief.

Date Surveyed

OCTOBER 9, 1993

Signature & Seal of  
Professional Surveyor

GARY L. JONES  
NEW MEXICO  
REGISTERED PROFESSIONAL SURVEYOR  
No. 2977  
JOHN W. WEBB 678  
RONALD J. EDSON 3239  
JONES 7977

93-11-1978



[illegible]

2  
 3  
 60  
 52  
 Phillips  
 028784  
 (Grt. Westh)  
 Grayburg  
 Dr. Umfry  
 TD 11042  
 P/B 2838  
 45  
 (2)  
 46  
 51  
 47  
 13  
 49  
 22  
 P60  
 48  
 49  
 17  
 21  
 Phillips  
 028784  
 "A"  
 U.S.  
 "Keely"  
 18  
 20

26-B8 25-BB 24-C  
Phillips P15 b1c (Anne B  
3759 2 7M1 | Windfohr, et al)  
23-BB Phillips 23-C  
24-BB 05067  
"Grogburg" 1 20C  
18 "Burch"  
37 41 31-BB Phillips 22-C  
21-BB 22-BB 19-C  
F175 028793 43-C  
"Burch"  
37 43 1 U.S. 14-AA 17-AA  
28-AA 15-AA (MO)  
"Burch-Fed" (7D11442  
Mo 05f  
NC  
"CB  
4  
c  
2  
P9C  
AR  
To

WC  
25C  
28-B  
F-150  
7-B  
7-BF  
8-B  
27BH  
29-B  
2C

1  
Aurch  
19C

37 43  
25  
Phillips  
37 41  
2  
37 40  
11.5  
34  
17  
31  
37 39  
12  
37 38  
25 (00)  
37 37  
37 36  
37 35  
37 34  
37 33  
37 32  
37 31  
37 30  
37 29  
37 28  
37 27  
37 26  
37 25  
37 24  
37 23  
37 22  
37 21  
37 20  
37 19  
37 18  
37 17  
37 16  
37 15  
37 14  
37 13  
37 12  
37 11  
37 10  
37 9  
37 8  
37 7  
37 6  
37 5  
37 4  
37 3  
37 2  
37 1

Phillips  
Burch  
G69  
Unit  
AA  
BB  
CC  
DD  
EE  
FF  
GG  
HH  
II  
JJ  
KK  
LL  
MM  
NN  
OO  
PP  
QQ  
RR  
SS  
TT  
UU  
VV  
WW  
XX  
YY  
ZZ

Submit to Appropriate  
District Office  
State Lease - 4 copies  
Fee Lease - 3 copies

State of New Mexico  
Energy, Minerals and Natural Resources Department

Form C-102  
Revised 1-1-89

OIL CONSERVATION DIVISION

P.O. Box 2088  
Santa Fe, New Mexico 87504-2088

DISTRICT I

P.O. Box 1980, Hobbs, NM 88240

DISTRICT II

P.O. Drawer DD, Artesia, NM 88210

DISTRICT III

1000 Rio Brazos Rd., Aztec, NM 87410

WELL LOCATION AND ACREAGE DEDICATION PLAT

All Distances must be from the outer boundaries of the section

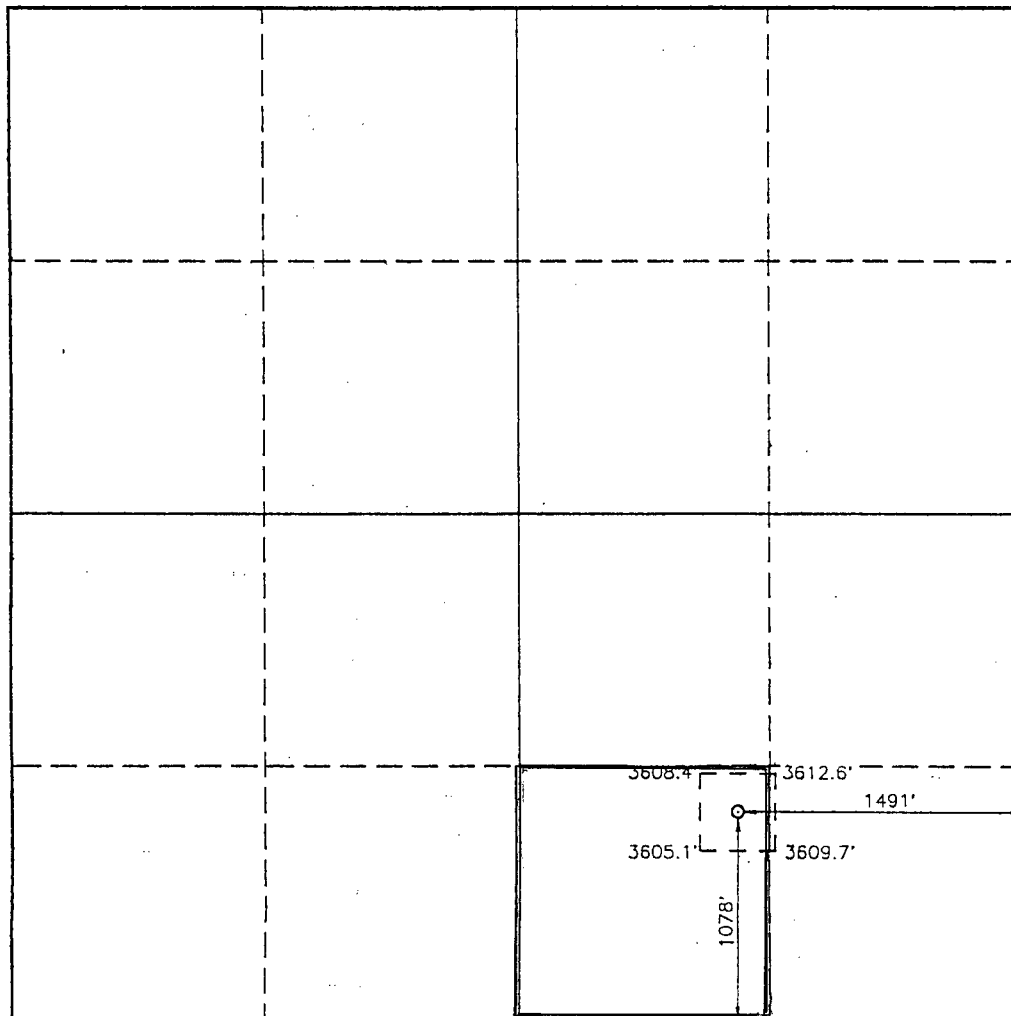
Operator MARBOB ENERGY CORP.			Lease BURCH-KEELY UNIT		Well No. 222
Unit Letter O	Section 24	Township 17 SOUTH	Range 29 EAST NMPM	County EDDY	
Actual Footage Location of Well: 1078 feet from the SOUTH line and 1491 feet from the EAST line					
Ground Level Elev. 3609.5'	Producing Formation SAN ANDRES		Pool GRBG JACKSON SR Q GRBG SA		Dedicated Acreage: 40 Acres

1. Outline the acreage dedicated to the subject well by colored pencil or hatchure marks on the plat below.
2. If more than one lease is dedicated to the well, outline each and identify the ownership thereof (both as to working interest and royalty).
3. If more than one lease of different ownership is dedicated to the well, have the interest of all owners been consolidated by communitization, unitization, force-pooling, etc.?

☐ Yes ☐ No If answer is "yes" type of consolidation \_\_\_\_\_

If answer is "no" list of owners and tract descriptions which have actually been consolidated. (Use reverse side of this form necessary.)

No allowable will be assigned to the well unit all interests have been consolidated (by communitization, unitization, forced-pooling, otherwise) or until a non-standard unit, eliminating such interest, has been approved by the Division.



OPERATOR CERTIFICATION

I hereby certify the the information contained herein is true and complete to the best of my knowledge and belief.

Signature

Printed Name

RHONDA NELSON

Position

PRODUCTION CLERK

Company

MARBOB ENERGY CORPORATION

Date

OCTOBER 15, 1993

SURVEYOR CERTIFICATION

I hereby certify that the well location shown on this plat was plotted from field notes of actual surveys made by me or under my supervision, and that the same is true and correct to the best of my knowledge and belief.

Date Surveyed

OCTOBER 12, 1993

Signature & Seal of Professional Surveyor

NEW MEXICO  
GARY L. JONES, 7977  
Certification No. WEST, 876  
EDSON, 3239  
GARY L. JONES, 7977

93-11-1978



