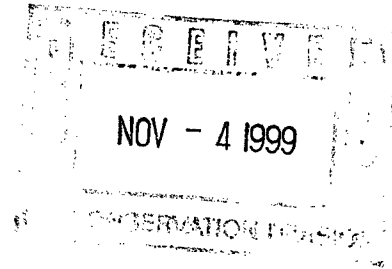




New Name. Same Spirit.  
A Business Unit of Unocal

NSL 11/24/99



October 29, 1999

Oil Conservation Division  
2040 South Pacheo  
Santa Fe, NM 87505

Re: Non-Standard Location  
Rincon #133E  
Rio Arriba County, New Mexico

Dear Mr. Stogner:

Union Oil Company of California (Unocal) requests authorization for a non-standard location for Unocal's existing Rincon Unit #133E. The well is located 790' FNL & 445' FWL of Sec. 14, T-27N-R7W, Rio Arriba County, NM.

Rincon Unit #133E was originally permitted (with State and BLM approval) as a non-standard Basin Dakota/Mesa Verde location. The well was spudded 7-4-94 and TD'd at 7788' on 7-21-94.

Unocal perferd the Blanco Pictured 3218'-90'; well is shut in pending approval of non-standard location.

If you have questions, please call me at (915) 685-7607 or our engineer, Michael Lyon at (915) 685-6803.

Very truly yours,

*Charlotte Beeson*

Charlotte Beeson  
Regulatory Clerk

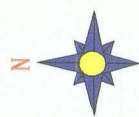




**SPIRIT ENERGY 76**  
New Name, Same Spirit

RINCON UNIT  
Rio Arriba Co., NM  
All Wells

|            |                  |             |
|------------|------------------|-------------|
| Base Map   | Scale 1:86582.85 | CU= NONE    |
| Joe Schwab | 10/20/1999       | J88-RNC.GPJ |



ASSET GROUP: South Permian  
FIELD: Basin Dakota / M.V. & P.C.  
LEASE/UNIT: Rincon Unit  
COUNTY: Rio Arriba

**SPIRIT ENERGY 76**  
New Name. Same Spirit.  
A New Mexico Limited Liability Company

DATE: May. 10, 1999  
BY: M.C. Phillips  
WELL: #133E  
STATE: New Mexico

SPUD DATE: 7/4/94  
COMP. DATE: 10/18/94  
STATUS: Dual

KB = 6,678'  
Elevation = 6,665'  
TD = 7,900'  
PBDT = 7,856'

After

8-5/8" @ 367'. 24# J-55, ST&C Cmt'd w/255 sxs. Circ.

|          |  |
|----------|--|
| 3,257.17 | 1" TUBING DETAIL (1.315" OD)               |
| .30      | 100 JTS 1" 1.75# J-55 10RD IJ NEW SMLS TBG |
| 3,257.47 | 1" x 2-1/16" 10RD IJ X-OVER                |
| 11.00    | TOTAL TBG (100 JTS)                        |
| 3,267.47 | KB   |
| FHD      |  |

1" tbg set @ 3267' for Pictured Cliffs side

### Picture Cliff

Perfs @ 3,218-20', 3,252-90'.

DV Tool @ 4,683'

|                       |  |           |
|-----------------------|--|-----------|
| 2-1/16" TUBING DETAIL |  | MV/Dakota |
| .55                   | 2-3/8" GUIBERSON PUMP-OUT PLUG                       |           |
| .72                   | 2-1/16" IJ X 2-3/8" 8RD X-OVER                       |           |
| .75                   | 2-1/16" IJ SEATING NIPPLE                            |           |
| 4,362.84              | 2-1/16" 3.25# J-55 10RD IJ USED ERW TBG              |           |
| .80                   | 2-3/8" 8RD X 2-1/16" IJ X-OVER                       |           |
| 3.65                  | 5-1/2" x 2-3/8" GUIB G-VI PKR SLEEVED TO 1.75" ID    |           |
| .60                   | 2-3/8" 8RD PIN X PIN X-O                             |           |
| 6.15                  | 2-3/8" 8RD TBG SUB SLEEVED TO 1.75" ID               |           |
| 1.90                  | 5-1/2" x 2-3/8" GUIB XL ON-OFF TOOL W/ 1.75" PROFILE |           |
| .75                   | 2-3/8" x 2-1/16" X-O                                 |           |
| 3,257.22              | 2-1/16" 3.25# J-55 10RD IJ USED ERW TBG              |           |
| 24.00                 | (3) 2-1/16" 10RD IJ J-55 TBG SUBS - 10'-8"-6'        |           |
| 31.68                 | 2-1/16" 3.25# J-55 10RD IJ USED ERW TBG              |           |
| .40                   | 2-1/16" 10RD PIN X PIN NIPPLE                        |           |
| 7,692.01              | TOTAL TBG (242 JTS)                                  |           |
| 11.00                 | KB   |           |
| 7,703.01              | FHD  |           |

### Mesa Verde Perforations

Perfs @ 4,910-18', 4,974-88'.

Sqz'd with 50sx cement. Frac screened out w/18K In formation.

DV Tool @ 5,908'

### Dakota Perforations

Perfs @ 7,620-40', 7,652-62', 7,643-93', 7,702-08'.

5-1/2" @ 7,889'. 17# N-80, K-55, LT&C Cmt'd /1817sx. Circulated.

TD 7,788'

Guib  
G-VI  
Pkr.  
set  
at  
3333'

District IV  
2040 South Pacheco, Santa Fe, NM 87505

FILED FOR NSA (3)

Rincon Unit #133E D-14-27N-7W

ASSET GROUP: South Permian  
FIELD: Basin Dakota/MV & P.C.  
LEASE/UNIT: Rincon Unit  
COUNTY: Rio Arriba

**SPIRIT ENERGY** 76

New Name. Same Spirit.  
A Hess Company

DATE: May. 10, 1999  
BY: M.C. Phillips  
WELL: #133E  
STATE: New Mexico

SPUD DATE: 7/4/94  
COMP. DATE: 10/18/94  
STATUS: Dual

KB = 6,678'  
Elevation = 6,665'  
TD = 7,900'  
PBDT = 7,856'

After

8-5/8" @ 367'. 24# J-55, ST&C Cmt'd w/255 sxs. Circ.

1" tbg set @ 3267' for Pictured Cliffs side

Picture Cliff

Perfs @ 3,218-20', 3,252-90'.

DV Tool @ 4,683'

Sub  
GV  
Pkr.  
set  
at  
3333'

Mesa Verde Perforations

Perfs @ 4,910-18', 4,974-88'.

Sqz'd with 50sx cement. Frac screened out w/18K in formation.

DV Tool @ 5,908'

2 1/16" tbg set @ 7703' for Mesa Verde/Dakota side

Dakota Perforations

Perfs @ 7,620-40', 7,652-62', 7,643-93', 7,702-08'.

5-1/2" @ 7,889'. 17# N-80, K-55, LT&C Cmt'd /1817sx. Circulated.

TD 7,788'

UNITED STATES  
DEPARTMENT OF THE INTERIOR  
BUREAU OF LAND MANAGEMENT

FORM APPROVED  
Budget Bureau No. 1004-0135  
Expires: March 31, 1993

RECEIVED  
BLM

SUNDRY NOTICES AND REPORTS ON WELLS

Do not use this form for proposals to drill or to deepen or reentry to a different reservoir.  
Use "APPLICATION FOR PERMIT-" for such proposals

5. Lease Designation and Serial No.  
SF 079298-A

6. If Indian, Allottee or Tribe Name

SUBMIT IN TRIPLICATE

670 FARMINGTON, NM

7. If Unit or CA, Agreement Designation

Rincon Unit

1. Type of Well

☐ Oil Well ☒ Gas Well ☐ Other

2. Name of Operator

Union Oil Company of California

3. Address and Telephone No.

P. O. Box 671—Midland, TX 79702 (915) 685-7608

4. Location of Well (Footage, Sec., T., R., M., or Survey Description)

790' FNL & 445' FWL

Sec. 14, T27N, R7W

RECEIVED  
JUN 18 1999

OIL CON. DIV.  
DIST. 3

8. Well Name and No.

Rincon Unit #133E

9. API Well No.

30-039-25187

10. Field and Pool, or Exploratory Area

South Blanco Pictured Cliffs

11. County or Parish, State

Rio Arriba County, NM

12. CHECK APPROPRIATE BOX(S) TO INDICATE NATURE OF NOTICE, REPORT, OR OTHER DATA

TYPE OF SUBMISSION

- ☒ Notice of Intent  
☐ Subsequent Report  
☐ Final Abandonment Notice

TYPE OF ACTION

- ☐ Abandonment  
☒ Recompletion  
☐ Plugging Back  
☐ Casing Repair  
☐ Altering Casing  
☐ Other

- ☐ Change of Plans  
☐ New Construction  
☐ Non-Routine Fracturing  
☐ Water Shut-Off  
☐ Conversion to Injection  
☐ Dispose Water

(Note: Report results of multiple completion on Well Completion or Recompletion Report and Log form.)

13. Describe Proposed or Completed Operations (Clearly state all pertinent details, and give pertinent dates, including estimated date of starting any proposed work. If well is directionally drilled, give subsurface locations and measured and true vertical depths for all markers and zones pertinent to this work.)\*

Unocal plans to perf the Pictured Cliffs formation @ 3218'-3290' and dually complete with the currently downhole commingled Mesa Verde/Dakota.

Procedure and Wellbore Schematic attached.

14. I hereby certify that the foregoing is true and correct

Signed

Title Workover/Drig. Foreman

Date 06/03/99

(This space for Federal or State office use)

Approved by /s/ Duane W. Spencer

Title Team Lead, Petroleum Management

Date JUN 16 1999

Conditions of approval, if any:

Title 18 U.S.C. Section 1001, makes it a crime for any person knowingly and willfully to make to any department or agency of the United States any false, fictitious or fraudulent statements or representations as to any matter within its jurisdiction.

See Instruction on Reverse Side

OLD C104 FOR PC NSL + plat @ NMOC



|                 |            |
|-----------------|------------|
| Drilling Eng.   | <u>MCP</u> |
| Reservoir Eng.  |            |
| Production Eng. |            |
| Field Supt.     |            |
| Drilling Supt.  |            |

**UNION OIL COMPANY OF CALIFORNIA**  
**MIDLAND, TEXAS**  
**CONDITION OF HOLE & PROCEDURE**

**DATE:** 5/03/99

**FIELD:** Dakota **AREA:** South Permian  
**LEASE/UNIT:** Rincon Unit **WELL NO.:** 133E  
**REASON FOR WORK:** To add additional perms and fracture stimulate in the Picture Cliff.

**CONDITION OF HOLE:**

**TOTAL DEPTH:** 7,900' **ETD:** 7,856' **KB** **DATUM IS** 13' **ABOVE** G.L.

**CASING RECORD:**

**8-5/8" CASING DETAIL**

|         |       |  |
|---------|-------|--|
| .45'    |       | Howco Guide Shoe                         |
| 43.79'  |       | 24# J-55 LSS 8rd casing w/insert @ 323'. |
| 307.41' | 7 jts | 24# J-55 LSS 8rd casing.                 |
| <hr/>   |       |  |
| 351.65' |       | <b>Total Casing</b>                      |
| 15.35'  |       | <b>BKDB</b>                              |
| 367.00' |       | <b>FHD</b>                               |

Cement w/255sx STD cement + 2% CACL@ + 1/4#/sk flocele mixed @ 15.6 PPG. Circ 57 sxs at surface. Cement Circulated.

**5-1/2" CASING DETAIL**

|          |         |                              |
|----------|---------|------------------------------|
| 1.30'    |         | Baker Guide Shoe             |
| 43.96'   | 1 jts.  | 17# J-55 8rd New casing      |
| .83'     |         | Baker orifice float.         |
| 1216.80' | 28 jts. | 17# J-55 8rd New casing      |
| 514.02'  | 13 jts. | 15.5# J-55 8rd New casing    |
| 1120.16' | 26 jts. | 15.5# J-55 8rd New LS casing |
| 1.83'    |         | Baker D.V. Tool.             |
| 1501.90' | 36 jts. | 15.5# J-55 8rd New casing    |
| 1.83'    |         | Baker D.V. Tool              |
| 3459.35' | 80 jts. | 15.5# J-55 8rd New casing    |
| 23.81'   | 1 pce.  |                              |
| <hr/>    |         |                              |
| 7885.89' |         | <b>Total Casing</b>          |
| 13.00'   |         | <b>BKDB</b>                  |
| 7898.89' |         | <b>FHD</b>                   |

Cement 1 stage 370 sxs class 50/50 Poz "G" w/2% gel + 1/4#/sk D-29 f/b 175 sxs, circ 95 sxs off of DV. 2<sup>nd</sup> stage 325 sxs lead F/B 50 sxs tail, circulate 65 sxs off of DV tool. 3<sup>rd</sup> stage 887 sxs lead F/B 50 sxs tail. Circ 155 sxs to pit.

**TUBING DETAIL:**

234 jts 2-3/8" 8rd cue J-55 @ 7654' SN @ 7610'.

**PERFORATIONS:**

|            |        |    |        |
|------------|--------|----|--------|
| Dakota     | 7,620' | To | 7,708' |
| Mesa Verde | 4,910' | To | 4,988' |
|            |        |    | Sqzd   |

**REGULATORY REQUIREMENTS**

Sundry Notice, and 48hr notification prior to rig-up.

**PROCEDURE FOR THE RINCON UNIT 133E**

1. Notify BLM. Inspect anchors. Set blow down pit. Install blooie line.
2. MIRU DD PU. Hold pre-job inspection and safety meeting.
3. Blow down well. Kill well with 2% KCL (minimum amount.) ND tree. NU tested BOP. Send tree to be tested at ERC. Replace bad parts with most cost effective alternative.
4. Lower tubing to tag for fill. POH LD 2-3/8" production tubing and inspect.
5. RU WL. Run 4-3/4" guage ring and basket to 3500'. Run and set retrievable bridge plug @ 3300'. Dump 10' sand on top. Test casing to 2500#.
6. RU and perf Picture Cliff formation correlated to HLS Spectral Density Log dated 7/25/94. As follows 3218'-20', 3252-90' (40') 1 jspf via casing gun @ 90 degrees phazing.
7. NU wellhead saver. RU and breakdown perfs. If perfs will not breakdown, TIH OE'd and



spot 500 gals 15% HCL and additives from 3290-2790'. TOH. RU and acidize perms.

8. RU Halliburton and Frac new perforation 3218-20', 3252-90'. as per Halliburton recommendation.
9. Flowback well till dead. PU and TIH w/Bailer on Tubing and clean out sand to RTBP. Clean out over release bar. TOH. TIH w/releasing tool and retrieve RTBP.
10. PU and RIH and land long string @ 7654' with packer @ 3300'. PU and RIH w/short string and land. ND BOP. NU Tree.
11. RU and swab well in with PU or if swab unit is available, RD PU and RU swab unit and swab well in. Clean and level location. Turn over to production.

ASSET GROUP: South Permian  
FIELD: Basin Dakota  
LEASE/UNIT: Rincon Unit  
COUNTY: Rio Arriba

**SPIRIT ENERGY** **76**  
New Name. Same Spirit.  
A New Mexico Unit of General

DATE: May. 10, 1999  
BY: M.C. Phillips  
WELL: #133E  
STATE: New Mexico

SPUD DATE: 7/4/94  
COMP. DATE: 10/18/94  
STATUS: Commingled

KB = 6,678'  
Elevation = 6,665'  
TD = 7,900'  
PBTD = 7,856'

*Before*

8-5/8" @ 367'. 24# J-55, ST&C Cmt'd w/255 sxs. Circ.

**DV Tool @ 4,683'**

|        |                          |           |
|--------|--------------------------|-----------|
| Collar | 2-3/8" mule shoe clr     | 0.40'     |
| Tubing | 2-3/8" 4.7# J-55 8rd eue | 32.68'    |
| Nipple | 2-3/8" 4.7# J-55 8rd eue | 1.25'     |
| Tubing | 2-3/8" 4.7# J-55 8rd eue | 7,608.80' |
| TOTAL  |                          | 7,643.13' |
| KB     |                          | 11.00'    |
| FHD    |                          | 7,654.13' |

**Mesa Verde Perforations**

Perfs @ 4,910-18', 4,974-88'.

Sqz'd with 50sx cement. Frac screened out w/18K in formation.

**DV Tool @ 5,908'**

**Dakota Perforations**

Perfs @ 7,620-40', 7,652-62', 7,643-93', 7,702-08'.

5-1/2" @ 7,889'. 17# N-80, K-55, LT&C Cmt'd /1817sx. Circulated.

TD 7,788'

ASSET GROUP: South Permian  
FIELD: Basin Dakota  
LEASE/UNIT: Rincon Unit  
COUNTY: Rio Arriba

**SPIRIT ENERGY 76**  
New Name. Same Spirit.  
A Hess Energy Company

DATE: May. 10, 1999  
BY: M.C. Phillips  
WELL: #133E  
STATE: New Mexico

SPUD DATE: 7/4/94  
COMP. DATE: 10/18/94  
STATUS: Dual

KB = 6,678'  
Elevation = 6,665'  
TD = 7,900'  
PBDT = 7,856'

After

8-5/8" @ 367'. 24# J-55, ST&C Cmt'd w/255 sxs. Circ.

Picture Cliff

Perfs @ 3,218-20', 3,252-90'.

DV Tool @ 4,683'

Mesa Verde Perforations

Perfs @ 4,910-18', 4,974-88'.

Sqz'd with 50sx cement. Frac screened out w/18K in formation.

DV Tool @ 5,908'

Dakota Perforations

Perfs @ 7,620-40', 7,652-62', 7,643-93', 7,702-08'.

5-1/2" @ 7,889'. 17# N-80, K-55, LT&C Cmt'd /1817sx. Circulated.

TD 7,788'

District I  
PO Box 1988, Hobbs, NM 88241-1988  
District II  
PO Drawer DD, Artesia, NM 88211-8719  
District III  
1000 Rio Brazos Rd., Aztec, NM 87410  
District IV  
PO Box 2088, Santa Fe, NM 87504-2088

State of New Mexico  
Energy, Minerals & Natural Resources Department

OIL CONSERVATION DIVISION  
PO Box 2088  
Santa Fe, NM 87504-2088

OIL CONSERVATION DIVISION  
RECEIVED

Form C-104  
Revised February 10, 1994  
Instructions on back  
Submit to Appropriate District Office  
5 Copies

☐ AMENDED REPORT

I. REQUEST FOR ALLOWABLE AND AUTHORIZATION TO TRANSPORT

|   |                              |                              |
|---|------------------------------|------------------------------|
| Operator name and Address<br>Union Oil Company of California dba Unocal<br>P.O. Box 850<br>Bloomfield, New Mexico 87413 |                              | OGRID Number<br>023708       |
|   |                              | Reason for Filing Code<br>NW |
| API Number<br>30-039-25187  | Pool Name<br>Basin Dakota    | Pool Code<br>71599           |
| Property Code<br>011510   | Property Name<br>Rincon Unit | Well Number<br>#133F         |

II. <sup>10</sup> Surface Location

| UL or lot no. | Section | Township | Range | Lot Ida | Feet from the | North/South Line | Feet from the | East/West line | County |
|---------------|---------|----------|-------|---------|---------------|------------------|---------------|----------------|--------|
| D             | 14      | 27N      | 7W    |         | 790'          | N                | 445'          | W              | 039    |

<sup>11</sup> Bottom Hole Location

| UL or lot no.               | Section                                  | Township                                  | Range                             | Lot Ida                            | Feet from the                       | North/South line | Feet from the | East/West line | County |
|-----------------------------|--|---|-----------------------------------|------------------------------------|-------------------------------------|------------------|---------------|----------------|--------|
| D                           | 14                                       | 27N                                       | 7W                                |                                    | 790'                                | N                | 445'          | W              | 039    |
| <sup>12</sup> Les Code<br>F | <sup>13</sup> Producing Method Code<br>F | <sup>14</sup> Gas Connection Date<br>ASAP | <sup>15</sup> C-129 Permit Number | <sup>16</sup> C-129 Effective Date | <sup>17</sup> C-129 Expiration Date |                  |               |                |        |

III. Oil and Gas Transporters

| <sup>18</sup> Transporter<br>OGRID | <sup>19</sup> Transporter Name<br>and Address                          | <sup>20</sup> POD | <sup>21</sup> O/G | <sup>22</sup> POD ULSTR Location<br>and Description |
|------------------------------------|--|-------------------|-------------------|---|
| 7057                               | El Paso Natural Gas Company<br>P.O. Box 4990<br>Farmington, N.M. 87499 | 2813394           |                   |   |
| 14538                              | Meridian Oil Company<br>P.O. Box 4289<br>Farmington, N.M. 87499        | 2813393           |                   |   |
|                                    |  |                   |                   |   |
|                                    |  |                   |                   |   |
|                                    |  |                   |                   |   |
|                                    |  |                   |                   |   |

RECEIVED  
NOV - 3 1994

IV. Produced Water

| <sup>23</sup> POD | <sup>24</sup> POD ULSTR Location and Description |
|-------------------|--|
| 2813395           |  |

V. Well Completion Data

| <sup>25</sup> Spud Date | <sup>26</sup> Ready Date           | <sup>27</sup> TD        | <sup>28</sup> PBTD                 | <sup>29</sup> Perforations |
|-------------------------|------------------------------------|-------------------------|------------------------------------|----------------------------|
| 07/04/94                | 10/18/94                           | 7900'                   | 7855'                              | 7492' - 7708'              |
| <sup>30</sup> Hole Size | <sup>31</sup> Casing & Tubing Size | <sup>32</sup> Depth Set | <sup>33</sup> Socks Cement         |                            |
| 12 1/4"                 | 24# 8 5/8"                         | 367'                    | 255sx B w/2%CaCl <sub>2</sub> .1/4 |                            |
| 7 7/8"                  | 15.5#&17# 5 1/2"                   | 7900'                   | 1362sx 50/50poz, 275sx             |                            |
|                         |                                    |                         | 11"G" cmt, 180sx 35/65 p           |                            |
|                         | 2 7/8"                             | 7654'                   |                                    |                            |

VI. Well Test Data

| <sup>34</sup> Date New Oil | <sup>35</sup> Gas Delivery Date | <sup>36</sup> Test Date | <sup>37</sup> Test Length | <sup>38</sup> Tbg. Pressure | <sup>39</sup> Csg. Pressure |
|----------------------------|---------------------------------|-------------------------|---------------------------|-----------------------------|-----------------------------|
|                            | ASAP                            | 10/06/94                | 24 Hrs.                   | 105 psi                     |                             |
| <sup>40</sup> Choke Size   | <sup>41</sup> Oil               | <sup>42</sup> Water     | <sup>43</sup> Gas         | <sup>44</sup> AOF           | <sup>45</sup> Test Method   |
| 32/64"                     | 0                               | 0                       | 780 MCF/D                 |                             | Flowing                     |

\* I hereby certify that the rules of the Oil Conservation Division have been complied with and that the information given above is true and complete to the best of my knowledge and belief.

Signature: R.L. Caine  
Printed name: R.L. Caine  
Title: Production Foreman  
Date: November 3, 1994  
Phone: 505-632-1811

OIL CONSERVATION DIVISION  
11-3-94  
Approved by: Eric R. Bush  
Title: DEPUTY OIL & GAS INSPECTOR, DIST. #3  
Approval Date: NOV - 3 1994

\* If this is a change of operator fill in the OGRID number and name of the previous operator

(November 1983)  
(Formerly 9-330)

UNITED STATES  
DEPARTMENT OF THE INTERIOR  
BUREAU OF LAND MANAGEMENT

SUBMIT IN DUPLICATE\*

(See other in-  
structions on  
reverse side)

Budget Bureau No. 1004-0137  
Expires August 31, 1985

1. LEASE DESIGNATION AND SERIAL NO.

SF 079298 A

2. IF INDIAN, ALLOTTEE OR TRIBE NAME

7. UNIT AGREEMENT NAME

Rincon

8. FARM OR LEASE NAME

Rincon Unit

9. WELL NO.

133E

10. FIELD AND POOL, OR WILDCAT

Basin Dakota

11. SEC. T., R., M., OR BLOCK AND SURVEY  
OR AREA

D Sec. 14, T27N-R7W

12. COUNTY OR  
PARISH

Rio Arriba

13. STATE

NM

14. PERMIT NO.

30-039-25187

DATE ISSUED

05/16/94

1a. TYPE OF WELL:

OIL WELL ☐

GAS WELL ☒

DRY ☐

Other ☐

b. TYPE OF COMPLETION:

NEW WELL ☒

WORK OVER ☐

DEEP-EN ☐

PLUG BACK ☐

DIFF. CEM. ☐

Other ☐

2. NAME OF OPERATOR

Union Oil Company of California

3. ADDRESS OF OPERATOR

P.O. Box 850 - Bloomfield, NM 87413 (505)632-1811 ext 26

4. LOCATION OF WELL (Report location clearly and in accordance with any State requirements)\*

At surface 790' FNL & 445' FWL (NW NW)

At top prod. interval reported below Same

At total depth same

15. DATE SPUDDED

07/04/94

16. DATE T.D. REACHED

07/25/94

17. DATE COMPL. (Ready to prod.)

10/18/94

18. ELEVATIONS (DP, RKB, RT, GR, ETC.)\*

GD-6665'

19. ELEV. CASINGHEAD

6667'

20. TOTAL DEPTH, MD & TVD

7900'

21. PLUG BACK T.D., MD & TVD

7855'

22. IF MULTIPLE COMPL., HOW MANY?

RECEIVED  
NOV - 3 1994

23. INTERVALS DRILLED BY

ROTARY TOOLS

Rotary

CABLE TOOLS

NO

24. PRODUCING INTERVAL(S), OF THIS COMPLETION—TOP, BOTTOM, AND THICKNESS (MD)

7492' - 7528' Graneros (MD)

7620' - 7708' Basin Dakota (MD)

25. WAS DIRECTIONAL  
SURVEY MADE

NO

26. TYPE ELECTRIC AND OTHER LOGS RUN

DIL/GR/SP, Dens-Neu/GR W/Caliper

OIL CON. DIV.

27. WAS WELL CORED

NO

28. CASING RECORD (Record all changes set in well)

| CASING SIZE | WEIGHT, LB./FT. | DEPTH SET (MD) | HOLE SIZE | CEMENTING RECORD                            | AMOUNT PULLED |
|-------------|-----------------|----------------|-----------|---|---------------|
| 8 5/8"      | 24#             | 367'           | 12 1/4"   | 255sx B.w/2% CACL <sub>2</sub> 1/4 Floccell |               |
| 5 1/2"      | 15.5# & 17#     | 7900'          | 7 7/8"    | 1362sx 50/50 poz., 275sx Class              |               |
|             |                 |                |           | "G" cmt., 180sx 35/65 poz                   |               |

29. LINER RECORD

| SIZE | TOP (MD) | BOTTOM (MD) | SACKS CEMENT* | SCREEN (MD) |
|------|----------|-------------|---------------|-------------|
|      |          |             |               |             |

30. TUBING RECORD

| SIZE   | DEPTH SET (MD) | PACKER SET (MD) |
|--------|----------------|-----------------|
| 2 7/8" | 7654'          | NONE            |

31. PERFORATION RECORD (Interval, size and number)

Mesa Verde: 4910'-18', 4974'-88' 4spf - 90° (sqz'd)  
Graneros: 7492'-7506', 7515'-28' 4spf - 90°  
Dakota: 7620'-40', 7652'-62', 7673'-93', 7702'-08' 2spf

32. ACID, SHOT, FRACTURE, CEMENT SQUEEZE, ETC.

| DEPTH INTERVAL (MD) | AMOUNT AND KIND OF MATERIAL USED |
|---------------------|----------------------------------|
| 4910'-4974'         | sqz'd w/50sx Class "B" cmt.      |
| 7492'-7528'         | Frac. w/100,000# 20/40 Sand      |
| 7602'-7708'         | Frac. w/115,000# 20/40 Sand      |

33. PRODUCTION

| DATE FIRST PRODUCTION |                 | PRODUCTION METHOD (Flowing, gas lift, pumping—size and type of pump) |                         |          |            | WELL STATUS (Producing or shut-in) |               |
|-----------------------|-----------------|--|-------------------------|----------|------------|------------------------------------|---------------|
|                       |                 | Flowing  |                         |          |            | Shut-in                            |               |
| DATE OF TEST          | HOURS TESTED    | CHOKE SIZE   | PROD'N. FOR TEST PERIOD | OIL—BSL. | GAS—MCF.   | WATER—BSL.                         | GAS-OIL RATIO |
| 10/06/94              | 24 hours        | 32/64  | →                       | 0        | 780        | 0                                  |               |
| FLOW. TUBING PRESS.   | CASING PRESSURE | CALCULATED 24-HOUR RATE  | OIL—BSL.                | GAS—MCF. | WATER—BSL. | OIL GRAVITY-API (CORR.)            |               |
| 105 psi               |                 | →  |                         |          |            |                                    |               |

34. DISPOSITION OF GAS (Sold, used for fuel, vented, etc.)

Vented

TEST WITNESSED BY

Steve Courtney

35. LIST OF ATTACHMENTS

36. I hereby certify that the foregoing and attached information is complete and correct as determined from all available records

SIGNED

TITLE Production Engineer

NOV 04 1994

\*(See Instructions and Spaces for Additional Data on Reverse Side)

Title 18 U.S.C. Section 1001, makes it a crime for any person knowingly and willfully to make to any department or agency of the United States any false, fictitious or fraudulent statements or representations as to any matter within its jurisdiction.

NM000

BY

37. SUMMARY OF POROUS ZONES: (Show all important zones of porosity and contents thereof; cored intervals; and all drill-stem, tests, including depth interval tested, cushion used, time tool open, flowing and shut-in pressures, and recoveries):

| FORMATION      | TOP   | BOTTOM | DESCRIPTION, CONTENTS, ETC. | NAME           | TOP         |                  |
|----------------|-------|--------|-----------------------------|----------------|-------------|------------------|
|                |       |        |                             |                | MEAS. DEPTH | TRUE VERT. DEPTH |
| Fruitland      | 2995' | 3206'  | Coal Gas                    | Ojo Alamo      | 2266'       | 2266'            |
| Pictured Cliff | 3206' | 3364'  | SS Gas 10 - 17% 0           | Fruitland      | 2995'       | 2995'            |
| Chacra         | 4140' | 4375'  | SS Gas 8 - 15% 0            | Pictured Cliff | 3206'       | 3206'            |
| Cliff House    | 4917' | 4972'  | SS Gas 8 - 17% 0            | Middle Chacra  | 4198'       | 4198'            |
| Menefee        | 4972' | 5468'  | SS Gas 8 - 14% 0            | Lower Chacra   | 4317'       | 4317'            |
| Point Lookout  | 5468' | 5788'  | SS Gas 8 - 14% 0            | Cliff House    | 4917'       | 4917'            |
| Graneros SS    | 7489' | 7606'  | SS Gas 5 - 13% 0            | Point Lookout  | 5468'       | 5468'            |
| Dakota         | 7617' | 7730'  | SS Gas 5 - 10% 0            | Mancos         | 5854'       | 5854'            |
| Burro Canyon   | 7730' | 7820'  | SS Gas 8 - 12% 0            | Middle Gallup  | 6839'       | 6839'            |
| Morrison SS    | 7848' | 7862'  | SS Gas 5 - 12% 0            | Tocito/Gallup  | 7051'       | 7051'            |
|                |       |        |                             | Graneros SS    | 7489'       | 7489'            |
|                |       |        |                             | Dakota         | 7617'       | 7617'            |
|                |       |        |                             | Burro Canyon   | 7730'       | 7730'            |
|                |       |        |                             | Morrison SS    | 7848'       | 7848'            |

38. GEOLOGIC MARKERS

UNITED STATES  
DEPARTMENT OF THE INTERIOR  
BUREAU OF LAND MANAGEMENT

RECEIVED  
DLM

FORM APPROVED  
Budget Bureau No. 1004-0135  
Expires: March 31, 1993

94 NOV 7 AM 8 52

NOV-1 PM 2:03

SUNDRY NOTICES AND REPORTS ON WELLS

Do not use this form for proposals to drill or to deepen or reentry to a different reservoir.  
Use "APPLICATION FOR PERMIT—" for such proposals.

SUBMIT IN TRIPLICATE

1. Type of Well

☐ Oil Well ☒ Gas Well ☐ Other

2. Name of Operator

Union Oil Company of California

3. Address and Telephone No.

P.O. Box 2620, Casper, WY 82602, 307-234-1563

4. Location of Well (Footage, Sec., T., R., M., or Survey Description)

SEC. 14, T27N, -R7W  
790' FNL & 445' FWL

5. Lease Designation and Serial No.  
SF 079298

6. If Indian, Allottee or Tribe Name

N/A

7. If Unit or CA, Agreement Designation

RINCON UNIT

8. Well Name and No.

RINCON UNIT #133E

9. API Well No.

30-039-25187

10. Field and Pool, or Exploratory Area

BAS DAK/BLANCO MV

11. County or Parish, State

RIO ARriba CO., NM

CHECK APPROPRIATE BOX(S) TO INDICATE NATURE OF NOTICE, REPORT, OR OTHER DATA

TYPE OF SUBMISSION

☒ Notice of Intent  
☐ Subsequent Report  
☐ Final Abandonment Notice

TYPE OF ACTION

☐ Abandonment  
☐ Recompletion  
☐ Plugging Back  
☐ Casing Repair  
☐ Altering Casing  
☐ Change of Plans  
☐ New Construction  
☐ Non-Routine Fracturing  
☐ Water Shut-Off  
☐ Conversion to Injection  
☐ Dispose Water

RECEIVED  
NOV - 3 1994  
OIL CON. DIV.  
DIST. 3

NEW WELL COMPLETION

(Note: Report results of multiple completion on Well Completion or Recompletion Report and Log form.)

13. Describe Proposed or Completed Operations (Clearly state all pertinent details, and give pertinent dates, including estimated date of starting any proposed work. If well is directionally drilled, give subsurface locations and measured and true vertical depths for all markers and zones pertinent to this work.)

7/21/94 THRU 7/28/94

DRILD AHEAD TO 7,417' W/98% RETURNS. TRIP FOR BIT. LOSSES ON TRIP 325 BBLs. DRILD AHEAD TO 7,800'. DRILD TO TO @ 7,900'. CIRC HOLE CLEAN & MADE 15 STD SHORT TRIP W/NO DRAG. CIRC HOLE CLEAN & SPOTTED 100 BBL LCM PILL ON BTM. POOH FOR LOGS. R/U EL. RAN DIL/GR/SP FROM 7,905'-7,367' & DENS-NEU-GR-CAL-PE FROM 7,905'-3,000'. R/D EL. TIH TO 7,900' & CIRC/COND MUD. SPOTTED 100 BBL LCM PILL. STARTED POOH, L/D DP. CHANGED RAMS TO 5-1/2". RAN CSG TO 7,898'. RAN & CMTD 184 JTS OF 5-1/2" J-55 15.5# & 17# CSG @ 7,899' W/FC @ 7,855' & DV TOOLS @ 5,000' & 3,496' IN 3 STAGES AS FOLLOWS: 370 ST 50/50 POZ:G W/2% GEL + Q/4 PPG D-29 - 5 PPS D-42 + 0.4% D-112 + 0.1% D-800 + 0.2% D-46 + 3 PPS MAGNA FIBER MIXED @ 13.4 PPG (1.37 YLD). LEAD FOLLOWED BY 175 SX POZ:G + 1.5% B14 + 0.1% D-800 + 0.2% D46 + 2 PPS MAGNA FIBER (15.8 PPG, 1.16 YLD) PRECEDED BY 10 BBL PREWASH & 5 BW. PUMPED @ 5-6 BPM. DROPPED PLUG & DISPLACED W/70 BW & 117 BBLs MUD. BUMPED PLUG TO 1750 PSI & FLOATS HELD. DROPPED OPENING BOMBS. CIP @ 5:15 PM. GOOD CIRC THRUOUT JOB. OPENED

I hereby certify that the foregoing is true and correct

Signed Karen Burnett Title Drilling Secretary

October 31, 1994

Date

(This space for Federal or State office use)

Approved by  
Conditions of approval, if any:

Title

ACCEPTED FOR RECORD

NOV 01 1994

18 U.S.C. Section 1001, makes it a crime for any person knowingly and willfully to make to any department or agency of the United States any false, fictitious or fraudulent statements or representations as to any matter within its jurisdiction.

FARMINGTON DISTRICT OFFICE

\*See Instruction on Reverse Side

BY

RINCON UNIT #133E  
PAGE TWO

7/21/94 THRU 7/28/94

STAGING TOOL @ 740 PSI. CIRC 95 SX TO PIT. CIRC/COND WHILE WOC 4 HRS. PUMPED 325 SX SAME CMT AS 1ST STAGE LEAD, 50 SX TAIL SAME AS 1ST STAGE TAIL @ 5-6 BPM. DROPPED PLUG & DISP W/40 BW & 79 BBLS MUD. BUMPED PLUT TO 2750 PSI & FLOATS HELD. DROPPED OPENING BOMB. CIP @ 10"30 PM. GOOD CIRC THRU OUT. OPENED STAGING TOOL W/800 PSI & CIRC 65 SX TO PIT. CIRC/COND WHILE WOC 6 HRS. PUMPED 180 SX 35/65 POZ:G + 12% GEL + 10% SALT + 1/4 PPS D29 + 5 PPS D-42 + 3 PPS MAGNA FIBER MIXED @ 11.5 PPG & 2.9 HLD FOLLOWED BY 667 SX SAME CMT AS STAGE 1 & 2 LEAD, FOLLOWED BY 50 SX SAME CMT AS STAGE 1 & 2 TAIL. DROPPED PLUG & DISPL W/85 BW. BUMPED PLUG TO 2800 PSI. BLED OFF & FLOATS HELD. PUMPED @ 5-6 BPM W/GOOD RETURNS THRU OUT JOB. CIRC 155 SX TO PIT W/CIP @ 6:00 AM. N/D BOP'S. SET SLIPS W/90,000#. CUT OFF 5-1/2" CSG & RELEASED RIG. 7/27/94.

TEMP OFF REPORT



Form 3160-5  
(June 1990)

AN DIVISION

UNITED STATES  
DEPARTMENT OF THE INTERIOR  
BUREAU OF LAND MANAGEMENT

RECEIVED  
BLM

FORM APPROVED  
Budget Bureau No. 1004-0135  
Expires: March 31, 1993

SUNDRY NOTICES AND REPORTS ON WELLS

Do not use this form for proposals to drill or to deepen or reentry to a different reservoir.  
Use "APPLICATION FOR PERMIT—" for such proposals.

SUBMIT IN TRIPLICATE

1. Type of Well

☐ Oil Well ☒ Gas Well ☐ Other

2. Name of Operator

Union Oil Company of California

3. Address and Telephone No.

P.O. Box 2620, Casper, WY 82602, 307-234-1563

4. Location of Well (Footage, Sec., T., R., M., or Survey Description)

SEC. 14, T27N, -R7W  
790' FNL & 445' FWL

5. Lease Designation and Serial No.

SF 079298

6. If Indian, Allottee or Tribe Name

N/A

7. If Unit or CA, Agreement Designation

RINCON UNIT

8. Well Name and No.

RINCON UNIT #133E

9. API Well No.

30-039-25187

10. Field and Pool, or Exploratory Area

BAS DAK/BLANCO MV

11. County or Parish, State

RIO ARriba CO., NM

12. CHECK APPROPRIATE BOX(s) TO INDICATE NATURE OF NOTICE, REPORT, OR OTHER DATA

TYPE OF SUBMISSION

- ☒ Notice of Intent  
☐ Subsequent Report  
☐ Final Abandonment Notice

TYPE OF ACTION

- ☐ Abandonment  
☐ Recompletion  
☐ Plugging Back  
☐ Casing Repair  
☐ Altering Casing  
☐ Change of Plans  
☐ New Construction  
☐ Non-Routine Fracturing  
☐ Water Shut-Off  
☐ Conversion to Injection

☒ Other NEW WELL COMPLETION

(Note: Report results of multiple completion on Well Completion or Recompletion Report and Log form.)

13. Describe Proposed or Completed Operations (Clearly state all pertinent details, and give pertinent dates, including estimated date of starting any proposed work. If well is directionally drilled, give subsurface locations and measured and true vertical depths for all markers and zones pertinent to this work.)\*

10/12/94 THRU 10/18/94

SICP - 150 PSI. BLEW WELL DOWN IN 20 MIN THRU ADJ CHOKE. TIH TO 5,067' (NO FILL). UNLOADED W/AIR & RECOVERED 25 BW & NO SAND. POOH TO 4,898' & SHUT IN WELL FOR 2 HRS. SICP - 30 PSI. TIH TO 5,067' & UNLOADED W/AIR, RECOVERING 1/2 BW & NO SAND. POOH TO 4,898' & SWI. HAD 17 HR SITP & SICP OF 160 PSI. BLEW WELL DOWN IN 15 MIN. TIH W/5 JTS TBG. HAD NO SAND FILL OVERNITE. UNLOADED W/AIR, RECOVERING 1 BLW. PUMPED 1-5 BBLs 2% KCL SWEEP W/1 GAL SOAP. RECOVERED NO SAND & WELL DRIED UP. POOH W/2-3/8" TBG & L/D STRING FLOAT. TIH TO 5,028'. SPOTTED 5 SX SAND ON RBP @ 5,070'. PULLED 1 JT. ESTIMATED INJECTION RATE 3 BPM @ 400 PSI. MIXED & SPOTTED 50 SX CLASS "B" CMT W/.3% HALAD 344, & 2% CACL MIXED @ 15.6 PPG, (YIELD 1.18), 10.5 BBL OF CMT DOWN 2-3/8" TBG, PULLED 10 STANDS REVERSE TBG CLEAN. WELL TOOK FLUID. POOH W/2-3/8" TBG, LOADED CSG W/ 8 BBLs OF 2% KCL WATER, PUMPED @ 1/4 BPM, PUMPED 1-3/8 BBLs PRESSURE WENT TO 3,500 PSI & HELD. BLED BACK TO 3,000 PSI, CIP & JC. LEFT 3000 PSI ON CSG. R/D CEMENTERS.

14. I hereby certify that the foregoing is true and correct

Signed

Title Drilling Secretary

Date October 24, 1994

(This space for Federal or State office use)

Approved by

Title

ACCEPTED FOR RECORD

Conditions of app. oval, if any:

OCT 31 1994

Title 18 U.S.C. Section 1001, makes it a crime for any person knowingly and willfully to make to any department or agency of the United States any false, fictitious or fraudulent statements or representations as to any matter within its jurisdiction.

\*See Instruction on Reverse Side

NM000

BY

FARMINGTON DISTRICT OFFICE

RINCON UNIT #133E  
PAGE TWO

10/12/94 THRU 10/18/94

HAD 17 HRS SICP OF 2500 PSI. BLED PRESSURE OFF OF CSG. PU 4-3/4" BIT & 6' - 3-1/8" DC'S & TIH. TAGGED CMT @ 4,633'. DRLD HARD CMT FROM 4,633'-4,907'. REV CIRC HOLE CLEAN. L/D POWER SWIVEL & PULLED 2 STDS OF TBG. HAD SICP & SITP OF 0 PSI. TIH 4 JTS. CHANGED OUT POWER SWIVEL. DRLD HARD CMT FROM 4,907'-4,990'. TESTED 5-1/2" CSG TO 500 PSI. LEAKED OFF 200 PSI IN 15 MIN. CLEANED OUT TO TOP OF RBP @ 5,070'. POOH. STOOD BACK DC'S. PU RET TOOL & TIH. LATCHED RBP @ 5,070'. POOH W/RBP. SWI. HAD 10 HRS SICP OF 550 PSI. BLEW WELL DOWN IN 30 MINS, TIH. W/4-3/4" BIT & DRILL COLLARS, TAGGED SAND @ 7,573'. PU POWER SWIVEL & WASHED SAND OFF CIBP. DRILLED UP CIBP @ 7,590'. TIH TO 7,845', CIRC HOLE CLEAN. L/D POWER SWIVEL. POOH TO 4,700'. USED 320 BBLS OF 2% KCL WATER WHILE DRILLING OUT CIBP. HAD 0 PSI SICP. FINISHED POOH, L/D DC'S. PU 2-3/8" NOTCHED COLLAR 1 JT, 2-3/8" SEATING NIPPLE. TIH & TAGGED FILL @ 7,805'. CLEANED SAND OUT TO 7,845', HAD AIR COMP ON HOLE FOR 2 HRS @ 2,100 SCFM. PUMPED 1 - 10 BBLS 2% KCL & 1 GAL SOAP. SWEEP @ END OF DAY. WELL DRIED UP. MAKING NO SAND OR WATER, PULLED 6 STDS OUT. RECOVERED 150 BBLS OF LOAD WATER. HAD 14 HRS SITP OF 1700 PSI & SICP OF 1800 PSI. BLEW WELL DOWN ON ADJ COKE IN 2.5 HRS. TIH W/6 STDS. TAGGED SAND @ 7,837'. HAD 8' OF SAND FILL. CLEANED OUT TO 7,845' W/AIR @ 2100 SCFM. PUMPED 3-5 BBL SWEEPS OF 2% KCL W/1GAL SOAP. WELL DRIED UP W/NO WTR OR SAND. SHUT AIR OFF FOR 1 HR. HAD 4' SAND FILL. CIRC AIR FOR ANOTHER 3 HRS. PUMPED 2-10 BBLS 2% KCL SWEEPS W/1 GAL SOAP. AT END OF DAY, WELL DRIED UP. PULLED 8 STDS. HOOKED TBG UP TO FLARE LINE. PUT 600 PSI AIR ON CSG. PUT TBG ON 18/64" CHOKE & FLARED WELL TO PIT OVERNIGHT. RECOVERED 65 BLW. FLOWED WELL TO FLARE PIT OVERNIGHT, FLOWED UP 2-3/8" TBG ON 24/64" ADJ CHOKE. FTP - 350 PSI. FLARED GAS, BLEW WELL DOWN. TIH W/8 STDS. TAGGED. SAND FILL @ 7,835, HAD 10' OF FILL. PUT AIR COMP ON WELL @ 2,100 SCFM @ 410-675 PSI. CLEANED OUT TO ETD - 7,845'. PUMPED 2 - 10 BBLS OF 2% KCL W/1 GAL SOAP SWEEPS. HAD WELL CLEANED UP & DRIED UP. POOH W/ 6 JTS TBG. LANDED 234 JTS (7,643') OF 2-3/8", 4.7#, J-55, 8RD, EUE NEW TBG @ 7,654' W/SN @ 7,620'. NIPPED DOWN BOP & INSTALLED MASTER VALVE, HOOKED UP FLARE LINE & OPENED TBG. LEFT WELL FLOWING TO PIT OVER NIGHT. RD MO. TURN OVER TO PRODUCTION DEPT. 10/18/94.

OFF REPORT.

V

SIGN

Form 3160-5  
(June 1990)UNITED STATES  
DEPARTMENT OF THE INTERIOR  
BUREAU OF LAND MANAGEMENTRECEIVED  
BLMFORM APPROVED  
Budget Bureau No. 1004-0135  
Expires: March 31, 1993

5. Lease Designation and Serial No.

SF 079298

6. If Indian, Allottee or Tribe Name

N/A

7. If Unit or CA, Agreement Designation

RINCON UNIT

8. Well Name and No.

RINCON UNIT #133E

9. API Well No.

30-039-25187

10. Field and Pool, or Exploratory Area

BAS DAK/BLANCO MV

11. County or Parish, State

RIO ARRIBA CO., NM

## SUNDRY NOTICES AND REPORTS ON WELLS

Do not use this form for proposals to drill or to deepen or reentry to a different reservoir.  
Use "APPLICATION FOR PERMIT—" for such proposals

## SUBMIT IN TRIPLICATE

1. Type of Well

☐ Oil Well ☒ Gas Well ☐ Other

2. Name of Operator

Union Oil Company of California

3. Address and Telephone No.

P.O. Box 2620, Casper, WY 82602, 307-234-1563

4. Location of Well (Footage, Sec., T., R., M., or Survey Description)

SEC. 14, T27N, -R7W

790' FNL &amp; 445' FWL

12. CHECK APPROPRIATE BOX(S) TO INDICATE NATURE OF NOTICE, REPORT, OR OTHER DATA

## TYPE OF SUBMISSION

☒ Notice of Intent☐ Subsequent Report☐ Final Abandonment Notice

## TYPE OF ACTION

☐ Abandonment☐ Recompletion☐ Plugging Back☐ Casing Repair☐ Altering Casing☐ Other☐ Change of Plans☐ New Construction☐ Non-Routine Fracturing☐ Water Shut-Off☐ Conversion to Injection☐ Dispose Water

(Note: Report results of multiple completion on Well Completion or Recompletion Report and Log (u/m).)

13. Describe Proposed or Completed Operations (Clearly state all pertinent details, and give pertinent dates, including estimated date of starting any proposed work. If well is directionally drilled, give subsurface locations and measured and true vertical depths for all markers and zones pertinent to this work.)\*

7/12/94 THRU 7/18/94

DRLG AHEAD W/NO PROBLEMS, 5,192'. SLUG PIPE, DROP SURVEY. TRIP FOR BIT. TIH W/BIT. TAGGED @ 375'. ATTEMPT TO WORK PAST W/O SUCCESS TOOH. L/1) BIT TIH W/6" O.D. BIT SUB. ATTEMPT TO WORK THRU 375' W/O SUCCESS. POOH. R/U WIRELINE RUN CCL (2" O.D.) TAG @ 375'. APPEARS GUIDE SHOE BACKED OFF. TIH W/7-1/8" O.D. CONCAVE MILL - 2 JUNK SUBS ON 6" DC'S TO 375' MILL & REAM FROM 375'-422'. W/PUMP OFF THE HOLE & NO ROTATION WORK FROM 422'-370' W/NO PROBLEMS. TIH W/REAMING DC'S & DP APPEARS TO BE CHASING DEBRIS ON BTM. MILL & REAM @ 5,192'. TOH W/MILL. TIH W/BIT & TAG OBSTRUCTION @ 564'. TOH W/BIT. TIH W/MILL. MILL ON JUNK 564' FOR 12 MIN. & PUSH JUNK TO BTM 5,194' & MILL TO 5,198'. TOH W/MILL. TIH W/BIT TO 5,198' DRLD TO 5,715'.

14. I hereby certify that the foregoing is true and correct

Signed

Title

Drilling Secretary

October 21, 1994

(This space for Federal or State office use)

Approved by

Title

Conditions of approval, if any:

ACCEPTED FOR RECORD

OCT 31 1994

Title 18 U.S.C. Section 1001, makes it a crime for any person knowingly and willfully to make to any department or agency of the United States any false, fictitious or fraudulent statements or representations as to any matter within its jurisdiction.

\*See Instruction on Reverse Side

FARMINGTON DISTRICT OFFICE

RINCON UNIT #133#  
PAGE TWO

7/12/94 THRU 7/18/94

LOST COMPLETE RETURNS. PUMPED 400 BBL PREMIX, 40% M.F. W/3 #/BBL CALCAR. PUMPED 300 BBL MUD MIXED @ 9.1 PPG. PU 10 STDS TO 4,828' W/40-60K OVER STRING WT. PUMP PREMIX, 45% MF W/3 #/BBL CALCAR. REGAINED RETURNS AFTER PUMPING 80 BBL. TIH TO 5,540'. TAGGED BRIDGE & PUMPED 620 BBL OF LCM MATERIAL, 45% MAGNA FIBER 3#/BBL CALCAR. PU TO 5,260'. MIX & PUMP 300 BBL LCM DOWN BACKSIDE, 45% MF W/6 #/BBL CEDAR FIBER, 3#/BBL CALCAR & 400 BBLS SAME LCM DOWN DP. WAITED 1.5 HRS. PUMPED 200 BBLS LCM, 45% MF, 3 #/BBL CALCAR DOWN DP W/300 PSI. REGAINED RETURNS. MIXED & PUMPED LCM DOWN DP W/600 PSI WHILE MOVING PIPE. TIH TO 5,540'. HAD FULL RETURNS W/600 PSI. TIH TO 5,665'. FLUID LEVEL 30' BELOW ROTARY. CIRCULATE @ 600 PSI W/75% RETURNS. DRLD TO 5,945' W/LOSSES OF 25% USING 12% LCM. LOST COMPLETE RETURNS @ 5,945'. SPOTTED 400 BBLS LCM FROM PREMIX TANK W/45% MAGNA FIBER W/3 #/BBL CALCAR. TOH 10 STD TO 5,010'. MIX 400 BBL LCM. TIH TO 5,945' SPOTTED 400 BBL FROM PREMIX TANK W/48% MAGNA FIBER W/4 #/BBL CALCAR. TOH TO 5,440' & MIX 400 BBL LCM.

SURVEYS: 1/2° @ 4,735', 3/4° @ 5,192'

UNITED STATES  
DEPARTMENT OF THE INTERIOR  
BUREAU OF LAND MANAGEMENT

RECEIVED  
BLM

FORM APPROVED  
Budget Bureau No. 1004-0135  
Expires: March 31, 1993

54 OCT 17 PM 2:45 SF 079298

SUNDRY NOTICES AND REPORTS ON WELLS

Do not use this form for proposals to drill or to deepen or reentry to a different reservoir.  
Use "APPLICATION FOR PERMIT—" for such proposals

SUBMIT IN TRIPLICATE

1. Type of Well

☐ Oil Well ☒ Gas Well ☐ Other

2. Name of Operator

Union Oil Company of California

3. Address and Telephone No.

P.O. Box 2620, Casper, WY 82602, 307-234-1563

4. Location of Well (Footage, Sec., T., R., M.; or Survey Description)

SEC. 14, T27N, -R7W  
790' FNL & 445' FWL

5. Lease Designation and Serial No.

NM

6. If Indian, Allottee or Tribe Name

N/A

7. If Unit or CA, Agreement Designation

RINCON UNIT

8. Well Name and No.

RINCON UNIT #133E

9. API Well No.

30-039-25187

10. Field and Pool, or Exploratory Area

BAS DAK/BLANCO MV

11. County or Parish, State

RIO ARRIBA CO., NM

12. CHECK APPROPRIATE BOX(S) TO INDICATE NATURE OF NOTICE, REPORT, OR OTHER DATA

TYPE OF SUBMISSION

☒ Notice of Intent  
☐ Subsequent Report  
☐ Final Abandonment Notice

TYPE OF ACTION

☐ Abandonment  
☐ Recompletion  
☐ Plugging Back  
☐ Casing Repair  
☐ Altering Casing  
☒ Other  
☐ Change of Plans  
☐ New Construction  
☐ Non-Routine Fracturing  
☐ Water Shut-Off  
☐ Conversion to Injection  
☐ Dispose Water

(Note: Report results of multiple completion on Well Completion or Recompletion Report and Log form.)

13. Describe Proposed or Completed Operations (Clearly state all pertinent details, and give pertinent dates, including estimated date of starting any proposed work. If well is directionally drilled, give subsurface locations and measured and true vertical depths for all markers and zones pertinent to this work.)

10/4/94 THRU 10/10/94

SICP ON VACUUM. TIH TO 1,966' & STARTED UNLOADING W/AIR. CONT TIH UNLOADING W/AIR MAKING STOPS @ 4,251'; 5,557'; 6,863' AND 7,530'. TAGGED SAND @ 7,530'. WASHED DOWN W/AIR TO 7,582' & RECOVERED HEAVY TO LIGHT SAND. SWEEP CSG W/10 BW & A GAL SOAP. POOH TO 7,183'. SWI. RECOVERED 471 OF 729 BLW & 4 BO FROM GRANEROS. HAD 1340 PSI SICP & 1420 PSI SITP. BLEW WELL DOWN IN 1.5 HRS THRU ADJ COKE. TIH & TAGGED SAND @ 7,580' (2' FILL). UNLOADED W/AIR & RECOVERED 20 BW & 1 BO. WASHED DOWN TO 7,582' & UNLOADED W/AIR FOR 5 HRS. RECOVERING 40 ABW, 2 ABO & A TRACE OF SAND. PUT WELL ON TEST @ 2:45 PM, 10/5/94 & TESTED WELL UP BACKSIDE W/RATE STABILIZING @ 350 MCFD, 0 BWPD, 0 BOPD & 100 PSI FCP. CONT TESTING GRANEROS UP BACKSIDE AS FOLLOWS: CHOKE: 48/64, FCP: 100, SEP: 100, MCFD: 345. HAD 13 HRS SICP OF 1000 PSI & SITP OF 1300 PSI. BLEW WELL DOWN IN 1.5 HRS W/ADJUSTABLE CHOKE 12/64-48/64. TOH. SET RBP @ 5,070' ON WIRELINE. FILLED CSG W/2% KCL WATER. PRESSURE TESTED RBP TO 2500 PSI FOR 15 MIN. HELD OK.

14. I hereby certify that the foregoing is true and correct

Drilling Secretary

October 14, 1994

Signed Karen Burnell

Title

Date

(This space for Federal or State office use)

Approved by

Title

Conditions of approval, if any:

ACCEPTED FOR RECORD

RINCON UNIT # 133E  
PAGE TWO

10/4/94 THRU 10/10/94

PLACED 7' SAND OVER RBP W/SAND BAILER. PERF'D MESA VERDE W/3-3/4" CSG GUN, 90° PHASING, 4 SPF (19GR) FROM 4,974'-4,988' & 4,910'-4,918'. R/D WIRELINE. R/U ISOLATION TOOL. FRAC'D THE MESA VERDE DOWN 5-1/2" CSG W/VIKING IV-30-35 X-LINKED GEL & 20/40 OTTAWA SAND IN STAGES 2-10 PPG @ 30 BPM W/3500-1200-3700 PSI. SCREENED OUT WHEN 8 PPG STAGE HIT FORMATION PLACING 18M# OF SAND IN FORMATION, 42M# IN CSG & 41M# NOT PUMPED. R/D FRAC EQUIPMENT. CSG ON VACUUM WASHED SAND FROM 4,832' TO RBP @ 5,070'. TRIPPED FOR MODEL "F" PACKER & SEAT NIPPLE. TIH & SET PACKER @ 4,872'. TESTED CSG ABOVE PKR DOWN BACKSIDE TO 2200 PSI FOR 10 MIN. TESTED OK. TIH & SET PAKR @ 5,035' & TESTED. RBP & CSG BELOW PKR DOWN TBG TO 2200 PSI TESTED OK. TOH & SET PKR @ 4,840' & SWABBED TBG TO 4,840'. RECOVERED 25 BBLS WATER. TOH & L/D PACKER. TIH TO 2,612' & UNLOADED W/AIR @ 2100 SCFM @ 600 PSI. RECOVERED 10 BW W/NO SAND. TIH TO 4,245' & UNLOADED W/AIR @ 2100 SCFM @ 950 PSI. RECOVERED 40 BW W/NO SAND. TIH TO 5,065' AND TAGGED SAND (5' FILL). UNLOADED W/AIR @ 2100 SCFM @ 700 PSI. RECOVERED 20 BW W/LIGHT SAND. WASHED DOWN W/AIR TO 5,067'. UNLOADED W/AIR @ 2100 SCFM FOR 3 HRS & RECOVERED 45 BW W/LIGHT SAND. SWEPT CSG W/10 BBLS WATER & 1 GAL SOAP. TOH TO 4,571'.

UNITED STATES  
DEPARTMENT OF THE INTERIOR  
BUREAU OF LAND MANAGEMENT

RECEIVED  
DLH

FORM APPROVED  
Budget Bureau No. 1004-0135  
Expires: March 31, 1993

5. Lease Designation and Serial No.  
SF 079298

SUNDRY NOTICES AND REPORTS ON WELLS  
Do not use this form for proposals to drill or to deepen or reentry to a different reservoir.  
Use "APPLICATION FOR PERMIT—" for such proposals

6. If Indian, Allottee or Tribe Name

N/A

SUBMIT IN TRIPLICATE

1. Type of Well  
☐ Oil Well ☒ Gas Well ☐ Other

2. Name of Operator  
Union Oil Company of California

3. Address and Telephone No.  
P.O. Box 2620, Casper, WY 82602, 307-234-1563

4. Location of Well (Footage, Sec., T., R., M., or Survey Description)  
SEC. 14, T27N, R7W  
790' FNL & 445' FWL

7. If Unit or CA. Agreement Designation

RINCON UNIT

8. Well Name and No.  
RINCON UNIT #133E

9. API Well No.  
30-039-25187

10. Field and Pool, or Exploratory Area  
BAS DAK/BLANCO MV

11. County or Parish, State  
RIO ARriba CO., NM

12. CHECK APPROPRIATE BOX(s) TO INDICATE NATURE OF NOTICE, REPORT, OR OTHER DATA

TYPE OF SUBMISSION

☒ Notice of Intent

☐ Subsequent Report

☐ Final Abandonment Notice

TYPE OF ACTION

☐ Abandonment

☐ Recompletion

☐ Plugging Back

☐ Casing Repair

☐ Altering Casing

☒ Other

☐ Change of Plans

☐ New Construction

☐ Non-Routine Fracturing

☐ Water Shut-Off

☐ Conversion to Injection

☐ Dispose Water

(Note: Report results of multiple completion on Well Completion or Recompletion Report and Log form.)

13. Describe Proposed or Completed Operations (Clearly state all pertinent details, and give pertinent dates, including estimated date of starting any proposed work. If well is directionally drilled, give subsurface locations and measured and true vertical depths for all markers and zones pertinent to this work.)

9/27/94 THRU 10/3/94

HAD 0 SITP & SICP. TIH 1 STD & WASHED SAND IN CSG FROM 5,880'-7,180'. POOH 3 STDS. SITP & SICP - 0 PSI. TIH 3 STDS & WASHED SAND IN CSG FROM 7,180'-7,850'. CIRC 1 HR. POOH. SICP - 0 PSI. TIH TO 1,959' AND UNLOADED W/AIR @ 2100 SCFM @ 750 PSI. RECOVERED 47 BBLS WATER AND NO SAND. TIH TO 4,243' AND UNLOADED W/AIR @ 2100 SCFM @ 1000 PSI. RECOVERED 155 BBLS WATER AND NO SAND IN 1 HR. TIH TO 5,224' & UNLOADED W/AIR @ 2100 SCFM @ 400 PSI. RECOVERED 33 BBLS OF WATER AND NO SAND W/GAS VAPOR IN 1 HR. TIH TO 6,530' AND UNLOADED W/AIR @ 2100 SCFM @ 460 PSI. RECOVERED 41 BBLS WATER AND NO SAND W/GAS VAPOR. TIH TO 7,510' AND UNLOADED W/AIR @ 2100 SCFM @ 450 PSI. RECOVERED 33 BBLS WATER AND NO SAND W/GAS VAPOR IN 1 HR. TIH TO 7,705' AND UNLOADED W/AIR @ 425 PSI. RECOVERED 15 BBLS WATER AND NO SAND W/GAS VAPOR IN 1 HR. SWEPT HOLE CLEAN W/10 BBLS WATER AND 1 GAL SOAP. TOH TO 7,183'.

14. I hereby certify that the foregoing is true and correct

Drilling Secretary

October 7, 1994

Signed Karen Burnell

Title

Date

(This space for Federal or State office use)

Approved by

Title

Conditions of approval, if any:

ACCEPTED FOR RECORD

Title 18 U.S.C. Section 1001, makes it a crime for any person knowingly and willfully to make to any department or agency of the United States any false, fictitious or fraudulent statements or representations as to any matter within its jurisdiction.

\*See Instruction on Reverse Side

FARMINGTON DISTRICT OFFICE

NAI 00

RV

RINCON UNIT # 133E  
PAGE TWO

9/27/94 THRU 10/3/94

SICP - 1700 PSI. BLOWDOWN WELL IN 5 HRS W/ADJ CHOKE 8-32/64". TIH & TAGGED SAND @ 7,700' (5' FILL). UNLOADED W/AIR @ 2100 SCFM @ 660 PSI. RECOVERED 40 BBLS WATER AND SAND IN 1 HR. WASHED DOWN TO 7,840' W/AIR, RECOVERED 20 BBLS WATER W/SAND. SWEEPED HOLE CLEAN W/6 BBLS WATER & 1 GAL SOAP. UNLOADED W/AIR @ 2100 SCFM AND 350 PSI. NO WATER OR SAND RECOVERED IN 1 HR. TOH TO 7,330'. DAKOTA RECOVERY - TR - 460 BLW & 1 BO; TLTR - 685 BLW. HAD 1600 PSI SICP. BLEW WELL DOWN IN 2.5 HRS THRU ADJ CK. TIH & TAGGED SAND @ 7,835' (5' FILL). UNLOADED W/AIR @ 600 PSI & RECOVERED 10 BBLS WATER W/VERY LITTLE SAND IN 2 HRS. TOH TO 7,615', SWI RIGGED UP TEST PRODUCTION UNIT AND PUT WELL ON TEST @ 4 PM W/SICP - 800 PSI. FLOWED THRU 12/64 CHOKE @ 900 MCFD, DROPPING TO 500 MCFD IN 2 HRS W/100 PSI BACK-PRESSURE. TESTED WELL AS FOLLOWS:

| CHOKE | FCP | SEP | MCFD |
|-------|-----|-----|------|
| 32/64 | 100 | 99  | 405  |

BLEW DOWN WELL TO ATMOSPHERE AND UNLOADED FLUID FROM CSG AND PUT BACK ON TEST. HAD 12 HR SICP - 1600 PSI. BLEW WELL DOWN IN 2 HRS. POOH. R/U WL. LUBRICATED IN CIBP & SET @ 7,590'. PRESSURE TESTED CIBP TO 2500 PSI. HELD OK. PERFORATED GRANEROS AS FOLLOWS: 7,492'-7,506' & 7,515'-7,528' @ 4 SPF, W/3-3/8" CSG GUN @ 90° PHASING, & 19 GM CHGS. R/D WL. R/U WESTERN W/ISOLATION TOOL. FRAC'D THE GRANEROS DOWN 5-1/2" CSG W/23,268 GALS VIKING ID 35-30# CROSS LINK GEL AND 100M# 20/40 OTTAWA SAND IN STAGES FROM 2-8 PPG @ 30 BPM @ 1650 - 1190 PSI. FLUSHED W/175 BBLS GEL @ 1270-2450 PSI. ISIP - 2280 5 MIN - 2020, 10 MIN 1900, 15 MIN - 1740. R/D WESTERN SIW.



RECEIVED  
OCT 27 1994  
AM 8 32UNITED STATES  
DEPARTMENT OF THE INTERIOR  
BUREAU OF LAND MANAGEMENTRECEIVED  
BLMFORM APPROVED  
Budget Bureau No. 1004-0135  
Expires: March 31, 1993

5. Lease Designation and Serial No.

SF 079298A

6. If Indian, Allottee or Tribe Name

N/A

7. If Unit or CA, Agreement Designation

RINCON UNIT

8. Well Name and No.

RINCON UNIT #133E

9. API Well No.

30-039-25187

10. Field and Pool, or Exploratory Area

BAS DAK/BLANCO MV

11. County or Parish, State

RIO ARriba CO., NM

SUNDRY NOTICES AND REPORTS ON WELLS  
Do not use this form for proposals to drill or to deepen or reentry to a different reservoir.  
Use "APPLICATION FOR PERMIT—" for such proposals.

## SUBMIT IN TRIPLICATE

1. Type of Well

☐ Oil Well ☒ Gas Well ☐ Other

2. Name of Operator

Union Oil Company of California

3. Address and Telephone No.

P.O. Box 2620, Casper, WY 82602, 307-234-1563

4. Location of Well (Footage, Sec., T., R., M., or Survey Description)

SEC. 14, T27N, -R7W

790' FNL &amp; 445' FWL

12. CHECK APPROPRIATE BOX(S) TO INDICATE NATURE OF NOTICE, REPORT, OR OTHER DATA

## TYPE OF SUBMISSION

☒ Notice of Intent☐ Subsequent Report☐ Final Abandonment Notice

## TYPE OF ACTION

☐ Abandonment☐ Recompletion☐ Plugging Back☐ Casing Repair☐ Altering Casing☒ Other

NEW WELL COMPLETION

☐ Change of Plans☐ New Construction☐ Non-Routine Fracturing☐ Water Shut-Off☐ Conversion to Injection☐ Dispose Water

(Note: Report results of multiple completion on Well Completion or Recompletion Report and Log form.)

13. Describe Proposed or Completed Operations (Clearly state all pertinent details, and give pertinent dates, including estimated date of starting any proposed work. If well is directionally drilled, give subsurface locations and measured and true vertical depths for all markers and zones pertinent to this work.)\*

9/21/94 THRU 9/26/94

MIRU AZTEC #391. PRESSURE TESTED CSG/BLIND RAMS TO 2500 PSI. TIH, PU 2-3/8" TBG. TAGGED "DV" TOOL @ 3,496'. DRILLED OUT DV TOOL @ 3,496' IN 4 HRS, PRESSURE TESTED CSG TO 2500 PSI. HELD OK. TIH TO 5,000' & DRLED OUT DV TOOL IN 3 HRS. PRESSURE TESTED CSG TO 2500 PSI. HELD OK. TIH TO 7,765' & TAGGED CMT. DRLED OUT TO FC @ 7,855'. CIRC'D HOLE CLEAN FOR 1 HR. PRESSURE TESTED CSG TO 2500 PSI. HELD OK. CIRC'D HOLE W/CLEAN 2% KCL WTR. TOH W/TBG. R/U EL. RAN & CORRELATED GR/CBL/CCL TO NEUTRON LOG (7/25/94). PERF'D DAKOTA FROM 7,702'-7,708'; 7,673'-7,693'; 7,652'-7,662'; & 7,620'-7,640', 2 SPF, 90° PHSD & 19 GM CHG. RD EL. INSTALLED WELLHEAD ISOLATION TOOL. R/U WESTERN. BROKE DOWN DAKOTA @ 3000 PSI. PUMPED 18 BBLs 7.5% HCL ACID @ 4 BPM W/150 7/8" BALLS. DISP ACID W/200 BBLs WTR @ 25 BPM & 2400-3300 PSI.

14. I hereby certify that the foregoing is true and correct

Drilling Secretary

Signed

Title

Date

Sept 29, 1994

(This space for Federal or State office use)

Approved by

Title

Conditions of approval, if any:

ACCEPTED FOR RECORD

OCT 4 1994

Title 18 U.S.C. Section 1001, makes it a crime for any person knowingly and willfully to make to any department or agency of the United States any false, fictitious or fraudulent statements or representations as to any matter within its jurisdiction.

FARMINGTON DISTRICT OFFICE

\*See Instruction on Reverse Side

BY

RINCON UNIT 133E  
PAGE TWO

9/21/94 THRU 9/26/94

RAN JUNK BASKET & RETRIEVED 150 BALLS. HAD 49 HITS, 31 LIGHT HITS & 70 NO HITS. FRAC'D THE DAKOTA DOWN 5-1/2" CSG W/45,200 GALS VIKING ID 30# X-LINK GEL & 115M# 20/40 OTTAWA SAND IN STAGES FROM 2-8 PPG @ 25 BPM W/2370-3290 PSI. SWITCHED TO FLUSH @ 3290 PSI W/18M# SAND REMAINING. FLUSHED W/40 BBLs GEL @ 3290-3500 PSI W/136 BBLs FLUSH REMAINING. ISIP FROM BREAKDOWN - 1700 PSI. SHUT IN PRESSURES FROM FRAC NOT RECORDED DUE TO SCREENOUT. R/D WESTERN. TIH & TAGGED SAND @ 3,270'. WASHED SAND FROM 3,270'-4,375' & 5,485'-5,880'.

94 AUG 9 10 06 50  
SUNDRY NOTICES AND REPORTS ON WELLS  
Do not use this form for proposals to drill or to deepen or reentry to a different reservoir.  
Use "APPLICATION FOR PERMIT—" for such proposals  
94 AUG -1 PH 12:54  
679 FARMINGTON, NM

5. Lease Designation and Serial No.

SF 079298 A

6. If Indian, Allottee or Tribe Name

N/A

SUBMIT IN TRIPLICATE

1. Type of Well

☐ Oil Well ☒ Gas Well ☐ Other

2. Name of Operator

Union Oil Company of California

3. Address and Telephone No.

P.O. Box 2620, Casper, WY 82602, 4-1563

4. Location of Well (Footage, Sec., T., R., M., or Survey Description)

SEC. 14, T27N, -R7W  
790' FNL & 445' FWL

7. If Unit or CA, Agreement Designation

RINCON UNIT

8. Well Name and No.

RINCON UNIT #133E

9. API Well No.

30-039-25187

10. Field and Pool, or Exploratory Area

BAS DAK/BLANCO MV

11. County or Parish, State

RIO ARriba CO., NM

12. CHECK APPROPRIATE BOX(s) TO INDICATE NATURE OF REPORT, OR OTHER DATA

TYPE OF SUBMISSION

☒ Notice of Intent  
☐ Subsequent Report  
☐ Final Abandonment Notice

TYPE OF ACTION

☐ Abandonment  
☐ Recompletion  
☐ Plugging Back  
☐ Casing Repair  
☐ Altering Casing  
☒ Other SUPPLEMENTARY WELL HISTORY  
☐ Change of Plans  
☐ New Construction  
☐ Non-Routine Fracturing  
☐ Water Shut-Off  
☐ Conversion to Injection  
☐ Dispose Water

(Note: Report results of multiple completion on Well Completion or Recompletion Report and Log form.)

13. Describe Proposed or Completed Operations (Clearly state all pertinent details, and give pertinent dates, including estimated date of starting any proposed work. If well is directionally drilled, give subsurface locations and measured and true vertical depths for all markers and zones pertinent to this work.)\*

7/19/94 THRU 7/21/94

TIH TO 5,945'. PUMPED 400 BBL LCM PILL. TOH TO 5,090' & MIXED LCM IN RIG PIT. TIH TO 5,945'. PUMPED 700 BBL LCM PILL PARTIAL RETURNS AFTER 300 BBL PUMPED,, CONT PUMPING LOST 100 BBL. DRLD AHEAD TO 6,175'. RETURNS VARY FROM 20% TO 85%. DRLD TO 6,279'. SPOTTED 100 BBL LCM PILL ON BOTTOM. TOH W/NO DRAG. TIH & TAGGED BRIGES @ 5,571' & 5,477' LOST 100 BBL ON TRIP. DRLD FROM 6,279' TO 6,490' W/100% RETURNS. DRLD TO 6,949' W/98% RETURNS EXCEPT FOR 50-100 BBL SUDDEN LOSSES. DRLD TO 7,417' RETURNS ARE 98% EXCEPT FOR SUDDEN LOSSES OF 30-100 BBL. TRIP FOR BIT. LOST 325 BBL ON TRIP. DRLD TO 7,800'. DRLD TO 7,900'. REACHED TD 7/25/94. CIRC HOLE CLEAN & MADE SHORT TRIP TO 6,970' W/NO DRAG.

SURVEY: 3/4° @ 6,279', 3/4° @ 6,810',

14. I hereby certify that the foregoing is true and correct.

Signed Karen Burnett

Title Drilling Secretary

Date July 29, 1994

(This space for Federal or State office use)

Approved by \_\_\_\_\_  
Conditions of approval, if any:

Title \_\_\_\_\_

ACCEPTED FOR RECORD

OIL CONSERVATION DIVISION  
RECEIVED

UNITED STATES  
DEPARTMENT OF THE INTERIOR  
BUREAU OF LAND MANAGEMENT

RECEIVED  
BLM

FORM APPROVED  
Budget Bureau No. 1004-0135  
Expires: March 31, 1993

5. Lease Designation and Serial No.

SF 079298 A

6. If Indian, Allottee or Tribe Name

N/A

7. If Unit or CA. Agreement Designation

RINCON UNIT

8. Well Name and No.

RINCON UNIT #133E

9. API Well No.

30-039-25187

10. Field and Pool, or Exploratory Area

BAS DAK/BLANCO MV

11. County or Parish, State

RIO ARriba CO., NM

SUBMIT IN TRIPLICATE

1. Type of Well

☐ Oil Well ☒ Gas Well ☐ Other

2. Name of Operator

Union Oil Company of California

3. Address and Telephone No.

P.O. Box 2620, Casper, WY 82602, 307-234-1563

4. Location of Well (Footage, Sec., T., R., M., or Survey Description)

SEC. 14, T27N, -R7W  
790' FNL & 445' FWL

12. CHECK APPROPRIATE BOX(S) TO INDICATE NATURE OF NOTICE, REPORT, OR OTHER DATA

TYPE OF SUBMISSION

- ☒ Notice of Intent  
☐ Subsequent Report  
☐ Final Abandonment Notice

TYPE OF ACTION

- ☐ Abandonment  
☐ Recompletion  
☐ Plugging Back  
☐ Casing Repair  
☐ Altering Casing  
☐ Other

- ☐ Change of Plans  
☐ New Construction  
☐ Non-Routine Fracturing  
☐ Water Shut-Off  
☐ Conversion to Injection

Dispose Water

(Note: Report results of multiple completion on Well Completion or Recompletion Report and Log form.)

13. Describe Proposed or Completed Operations (Clearly state all pertinent details, and give pertinent dates, including estimated date of starting any proposed work. If well is directionally drilled, give subsurface locations and measured and true vertical depths for all markers and zones pertinent to this work.)\*

7/6/94 THRU 7/11/94

DRILD TO 2,642'. POOH & FUNCTION TESTED BOP'S. TIH W/NEW BIT & DRILD TO 3,548' TRIPPED FOR BIT. RUNNING 20 BBL LCM SWEEP'S @ 8 HR INTERVALS F/HOLE CLEANING. DRILD TO 4,203'. CIRC & SLUGGED PIPE. TRIPPED FOR NEW BIT. DRILD TO 4,348'.

SURVEY: 3/4° @ 1,371', 3/4° @ 1,890', 3/4° @ 2,392', 3/4° @ 2,642', 3/4° @ 3,145', 1/2° @ 3,548', 3/4° @ 4,078', 1/2° @ 4,203'.

14. I hereby certify that the foregoing is true and correct

Signed Karen Burnett

Title Drilling Secretary

Date July 19, 1994

(This space for Federal or State office use)

Approved by \_\_\_\_\_  
Conditions of approval, if any:

Title \_\_\_\_\_

Date \_\_\_\_\_

Title 18 U.S.C. Section 1001, makes it a crime for any person knowingly and willfully to make to any department or agency of the United States any false, fictitious or fraudulent statements or representations as to any matter within its jurisdiction.

\*See Instruction on Reverse Side

FARMINGTON DISTRICT OFFICE

Form 3160-5  
June 1990  
RECEIVED  
JUL 25 AM 8 50

UNITED STATES  
DEPARTMENT OF THE INTERIOR  
BUREAU OF LAND MANAGEMENT

FORM APPROVED  
Budget Bureau No. 1004-0135  
Expires: March 31, 1993

SUNDRY NOTICES AND REPORTS ON WELLS

Do not use this form for proposals to drill or to deepen or reentry to a different reservoir.  
Use "APPLICATION FOR PERMIT—" for such proposals

5. Lease Designation and Serial No.  
SF 079298 A

6. If Indian, Allottee or Tribe Name

N/A

SUBMIT IN TRIPLICATE

1. Type of Well  
☐ Oil Well ☒ Gas Well ☐ Other

2. Name of Operator  
Union Oil Company of California

3. Address and Telephone No.  
P.O. Box 2620, Casper, WY 82602, 307-234-1563

4. Location of Well (Footage, Sec., T., R., M., or Survey Description)  
SEC. 14, T27N, -R7W  
790' FNL & 445' FWL

7. If Unit or CA, Agreement Designation  
RINCON UNIT

8. Well Name and No.  
RINCON UNIT #133E

9. API Well No.  
30-039-25187

10. Field and Pool, or Exploratory Area  
BAS DAK/BLANCO MV

11. County or Parish, State  
RIO ARriba CO., NM

12. CHECK APPROPRIATE BOX(s) TO INDICATE NATURE OF NOTICE, REPORT, OR OTHER DATA

| TYPE OF SUBMISSION                                   | TYPE OF ACTION                           |  |
|--|--|--|
| <input checked="" type="checkbox"/> Notice of Intent | <input type="checkbox"/> Abandonment     | <input type="checkbox"/> Change of Plans         |
| <input type="checkbox"/> Subsequent Report           | <input type="checkbox"/> Recompletion    | <input type="checkbox"/> New Construction        |
| <input type="checkbox"/> Final Abandonment           | <input type="checkbox"/> Plugging Back   | <input type="checkbox"/> Non-Routine Fracturing  |
|  | <input type="checkbox"/> Casing Repair   | <input type="checkbox"/> Water Shut-Off          |
|  | <input type="checkbox"/> Altering Casing | <input type="checkbox"/> Conversion to Injection |
|  | <input type="checkbox"/> Other           | <input type="checkbox"/> Dispose Water           |

(Note: Report results of multiple completion on Well Completion or Recompletion Report and Log form.)

13. Describe Proposed or Completed Operations (Clearly state all pertinent details, and give pertinent dates, including estimated date of starting any proposed work. If well is directionally drilled, give subsurface locations and measured and true vertical depths for all markers and zones pertinent to this work.)

7/4/94 THRU 7/5/94

MIRU ARAPAHOE DRLG RIG #2. SPUD 12-1/4" SURFCE HOLE @ 2:00 A.M. 7/4/94. DRL F/100'-372'. CIRC & COND MUD. DROPPED SURVEY & POOH. L/D BIT & 8" DC. RAN & CMTED 8 JTS OF 8-5/8", 24#, J55, ST&C CSG @ 367' W/255 SX OF STD CMT, 2% CACL<sub>2</sub>, 1/4 PPS FLOCELE MIXED @ 15.6 PPG (1.18 YLD). DISP W/20.5 BBLS FW. BUMPED PLUG W/490 PSI. BLED OFF PRESS & FLTS HELD. CIP JC @ 1:45 P.M. 7/4/94. CIRC 57 SX CMT TO SURFACE. WOC 4 HRS. BACKED OFF LANDING JT. N/U 11" 3M X 8-5/8" 8RD MALE CSG HEAD W/2-2" LOP W/2-2" X 3M BALL VALVES. N/U 11" X 3M BOP'S W/ROTATING HEAD. TEST BLEND RAMS - CASING- WELL HEAD TO 1500 PSI, HIGH 250 PSI LOW. STARTED REPAIRING DRAWWORKS.

SURVEY: 1/4° @ 372'

\*\*ATTEMPTED TO NOTIFY BLM 7:00 A.M. 7/4/94 W/O SUCCESS  
FINALLY NOTIFIED BLM 3:10 P.M. 7/4/94

4. I hereby certify that the foregoing is true and correct

Signed Jim Benson Title Drilling Superintendent Date July 7, 1994

(This space for Federal or State office use)

Approved by \_\_\_\_\_ Title \_\_\_\_\_ Date \_\_\_\_\_

Conditions of approval, if any: \_\_\_\_\_

ACCEPTED FOR RECORD

Title 18 U.S.C. Section 1001, makes it a crime for any person knowingly and willfully to make to any department or agency of the United States any false, fictitious or fraudulent statements or representations as to any matter within its jurisdiction.

\*See Instruction on Reverse Side

FARMINGTON DISTRICT OFFICE

NMOON

Sm

UNITED STATES  
DEPARTMENT OF THE INTERIOR  
BUREAU OF LAND MANAGEMENT  
OIL CONSERVATION DIVISION  
RECEIVED  
94 JUL 15 AM 8 50

FORM APPROVED  
Budget Bureau No. 1004-0135  
Expires: March 31, 1993

SUNDRY NOTICES AND REPORTS ON WELLS

Do not use this form for proposals to drill or to deepen or reentry to a different reservoir.  
Use "APPLICATION FOR PERMIT—" for such proposals

SUBMIT IN TRIPLICATE

1. Type of Well

☐ Oil Well ☒ Gas Well ☐ Other

2. Name of Operator

Union Oil Company of California

3. Address and Telephone No.

913 West Broadway, Bloomfield, NM 87413

4. Location of Well (Footage, Sec., T., R., M., or Survey Description)

14-27N-07W  
=====

0790'N - 0445'W

5. Lease Designation and Serial No.

SF-079298-A

6. If Indian, Allottee or Tribe Name

7. If Unit or CA, Agreement Designation

RINCON UNIT

8. Well Name and No.

RINCON UNIT #133E

9. API Well No.

10. Field and Pool, or Exploratory Area

DK/MV

11. County or Parish, State

RIO ARRIBA, NM

12. CHECK APPROPRIATE BOX(S) TO INDICATE NATURE OF NOTICE, REPORT, OR OTHER DATA

TYPE OF SUBMISSION

☒ Notice of Intent  
☐ Subsequent Report  
☐ Final Abandonment Notice

TYPE OF ACTION

☐ Abandonment  
☐ Recompletion  
☐ Plugging Back  
☐ Casing Repair  
☐ Altering Casing  
☒ Other Buried Gas Pipeline  
☐ Change of Plans  
☐ New Construction  
☐ Non-Routine Fracturing  
☐ Water Shut-Off  
☐ Conversion to Injection  
☐ Dispose Water

(Note: Report results of multiple completion on Well Completion or Recompletion Report and Log form.)

13. Describe Proposed or Completed Operations (Clearly state all pertinent details, and give pertinent dates, including estimated date of starting any proposed work. If well is directionally drilled, give subsurface locations and measured and true vertical depths for all markers and zones pertinent to this work.)\*

UNION OIL COMPANY OF CALIFORNIA PROPOSES TO LAY A BURIED NATURAL GAS PIPELINE FROM THE RINCON UNIT #133E TO THE EXISTING EPNG K-42 LATERAL. THE LINE WILL BE BURIED A MINIMUM OF 36" BELOW THE SURFACE AND WILL BE MARKED WITH PIPELINE MARKERS.

TIE LENGTH (BLM) = 1232.60'

PIPE SPECIFICATIONS: GAS  
- 4.5" STEEL  
- WT = 0.156", GR=X-42  
- WP = 250#  
- OP = 130#  
- TEST PRESSURE = 1050#  
- DEPTH = 36" MIN.

WATER - NONE

ARCH REPORT #: CASA 94-45  
ARCH REPORT DATE: 06-14-94

RECEIVED  
JUL 11 1994

SEE ATTACHED COPIES OF SURVEY PLAT AND TOPO.

OIL CON. DIV.  
DIST. 2

14. I hereby certify that the foregoing is true and correct

Signed 

Title Production Engineer

(This space for Federal or State office use)

Approved by \_\_\_\_\_

Title \_\_\_\_\_

Conditions of approval, if any:

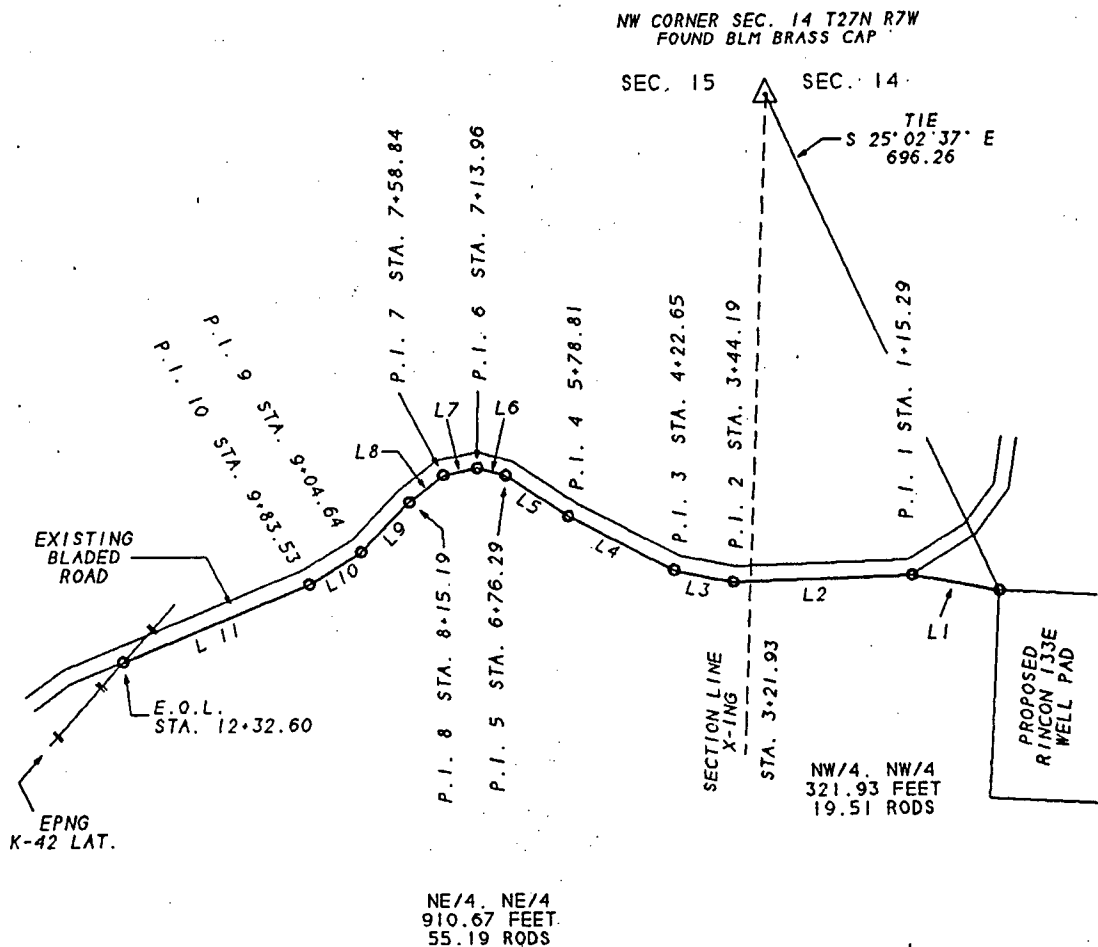
DATE JUL 7 1994

DISTRICT MANAGER

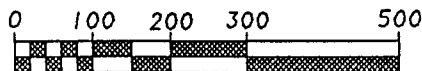
# UNOCAL

## PROPOSED PIPELINE FOR RINCON UNIT NO. 133E

LOCATED IN THE NW/4, NW/4 OF SECTION 14 AND THE NE/4, NE/4 OF SECTION 15 TOWNSHIP 27 NORTH RANGE 7 WEST  
N.M.P.M., RIO ARriba COUNTY, NEW MEXICO  
JUNE 7, 1984



| LINE NO. | DIRECTION       | LENGTH |
|----------|-----------------|--------|
| 1        | N 79° 53' 07" W | 115.29 |
| 2        | S 88° 16' 23" W | 228.90 |
| 3        | N 78° 43' 17" W | 78.46  |
| 4        | N 63° 10' 57" W | 156.16 |
| 5        | N 56° 39' 47" W | 97.48  |
| 6        | N 74° 50' 02" W | 37.67  |
| 7        | S 77° 55' 58" W | 44.88  |
| 8        | S 51° 20' 48" W | 56.35  |
| 9        | S 43° 42' 58" W | 89.45  |
| 10       | S 58° 16' 43" W | 78.89  |
| 11       | S 67° 58' 58" W | 263.67 |



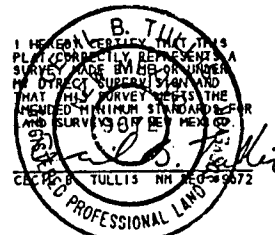
SCALE: 1" = 200'

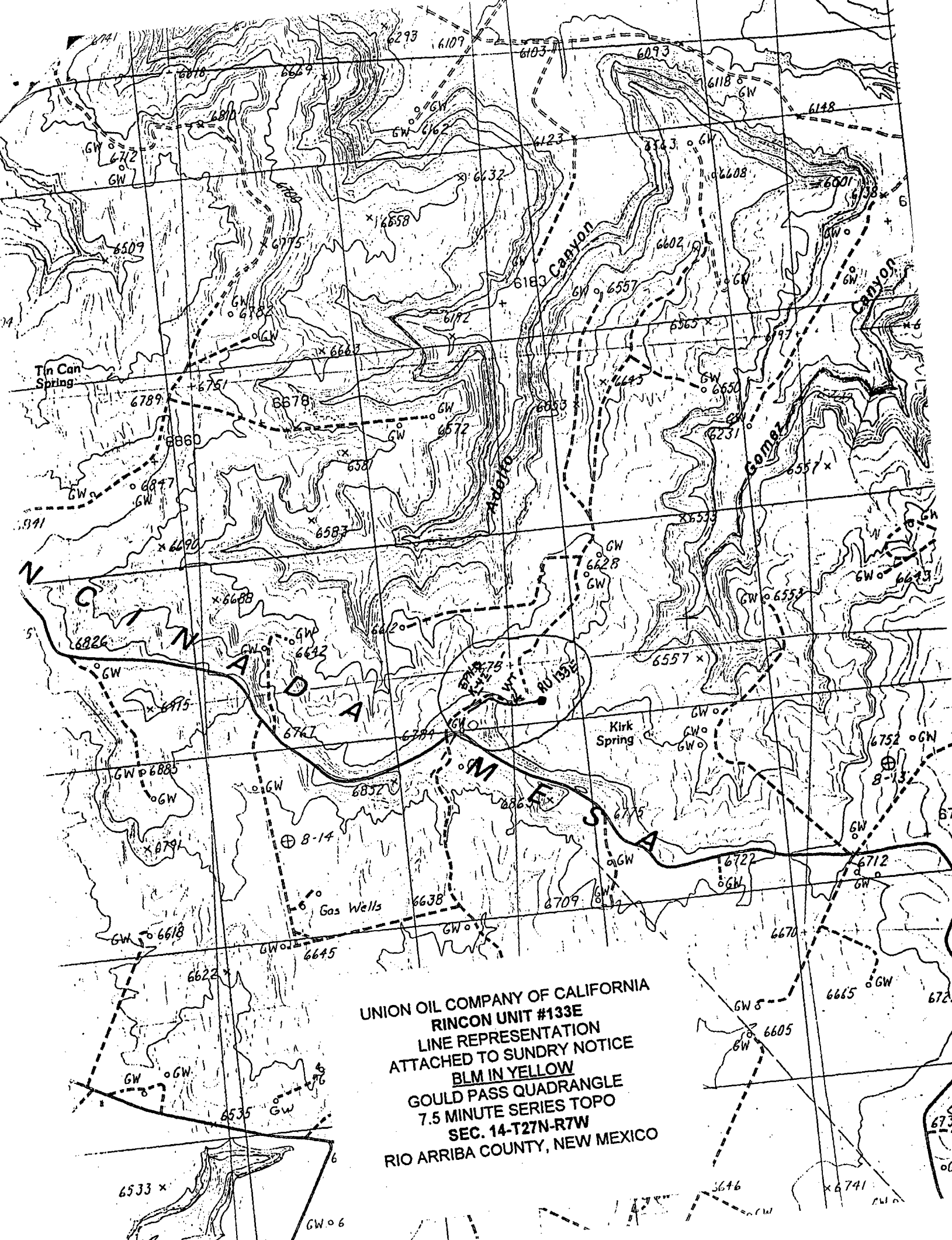


HIGH  
COUNTRY  
SURVEYS

101 W. 32ND STREET  
FARMINGTON, NEW MEXICO

BASIS OF BEARING: WEST LINE OF SEC.  
14 FOUND NW CORNER AND WEST 1/4  
CORNERS N 2° 21' 00" E





UNION OIL COMPANY OF CALIFORNIA  
RINCON UNIT #133E  
LINE REPRESENTATION  
ATTACHED TO SUNDRY NOTICE  
BLM IN YELLOW  
GOULD PASS QUADRANGLE  
7.5 MINUTE SERIES TOPO  
SEC. 14-T27N-R7W  
RIO ARRIBA COUNTY, NEW MEXICO



Submit to Appropriate  
District Office  
State Lease - 4 copies  
Fee Lease - 3 copies

DISTRICT I  
P.O. Box 1980, Hobbs, NM 88240

DISTRICT II  
P.O. Box 1100, Artesia, NM 88210

DISTRICT III  
1000 Rio Pecos Rd., Aztec, NM 87410

State of New Mexico  
Energy, Minerals and Natural Resources Department

# OIL CONSERVATION DIVISION

P.O. Box 2088  
Santa Fe, New Mexico 87504-2088

## WELL LOCATION AND ACREAGE DEDICATION PLAT

All Distances must be from the outer boundaries of the section

|  |   |                        |                             |                                  |  |
|--|---|------------------------|-----------------------------|----------------------------------|--|
| Operator<br><b>UNOCAL</b>  |   |                        | Lease<br><b>RINCON</b>      |                                  | Well No.<br><b>133-E</b>                             |
| Unit Letter<br><b>D</b>  | Section<br><b>14</b>                            | Township<br><b>27N</b> | Range<br><b>7W</b>          | County<br><b>NMEM RIO ARRIBA</b> |  |
| Actual Footage Location of Well:<br><b>790</b> feet from the <b>NORTH</b> line and <b>445</b> feet from the <b>WEST</b> line |   |                        |                             |                                  |  |
| Ground level Elev.<br><b>6665</b>  | Producing Formation<br><b>Dakota/Mesa Verde</b> |                        | Pool<br><b>Basin/Blanco</b> |                                  | Dedicated Acreage: <b>309.06</b><br><b>320</b> Acres |

1. Outline the acreage dedicated to the subject well by colored pencil or hatchure marks on the plat below.

2. If more than one lease is dedicated to the well, outline each and identify the ownership thereof (both as to working interest and royalty).

3. If more than one lease of different ownership is dedicated to the well, have the interest of all owners been consolidated by communitization, unitization, force pooling, etc.?

☒ Yes ☐ No If answer is "yes" type of consolidation

unitization

If answer is "no" list the owners and tract descriptions which have actually been consolidated. (Use reverse side of this form if necessary.)

No allowable will be assigned to the well until all interests have been consolidated (by communitization, unitization, forced pooling, or otherwise) or until a non-standard unit, eliminating such interest, has been approved by the Division.

S 88° 34' W

RECEIVED  
MAY 18 1994  
OIL CON. DIV.  
DIST. 3

### OPERATOR CERTIFICATION

I hereby certify that the information contained herein is true and complete to the best of my knowledge and belief.

Signature Jim Benson

Printed Name Jim Benson

Position Drilling Superintendent

Company Union Oil Co.

Date 1/12/94

### SURVEYOR CERTIFICATION

I hereby certify that the well location shown on this plat was plotted from field notes of actual surveys made by me or under my supervision, and that the same is true and correct to the best of my knowledge and belief.

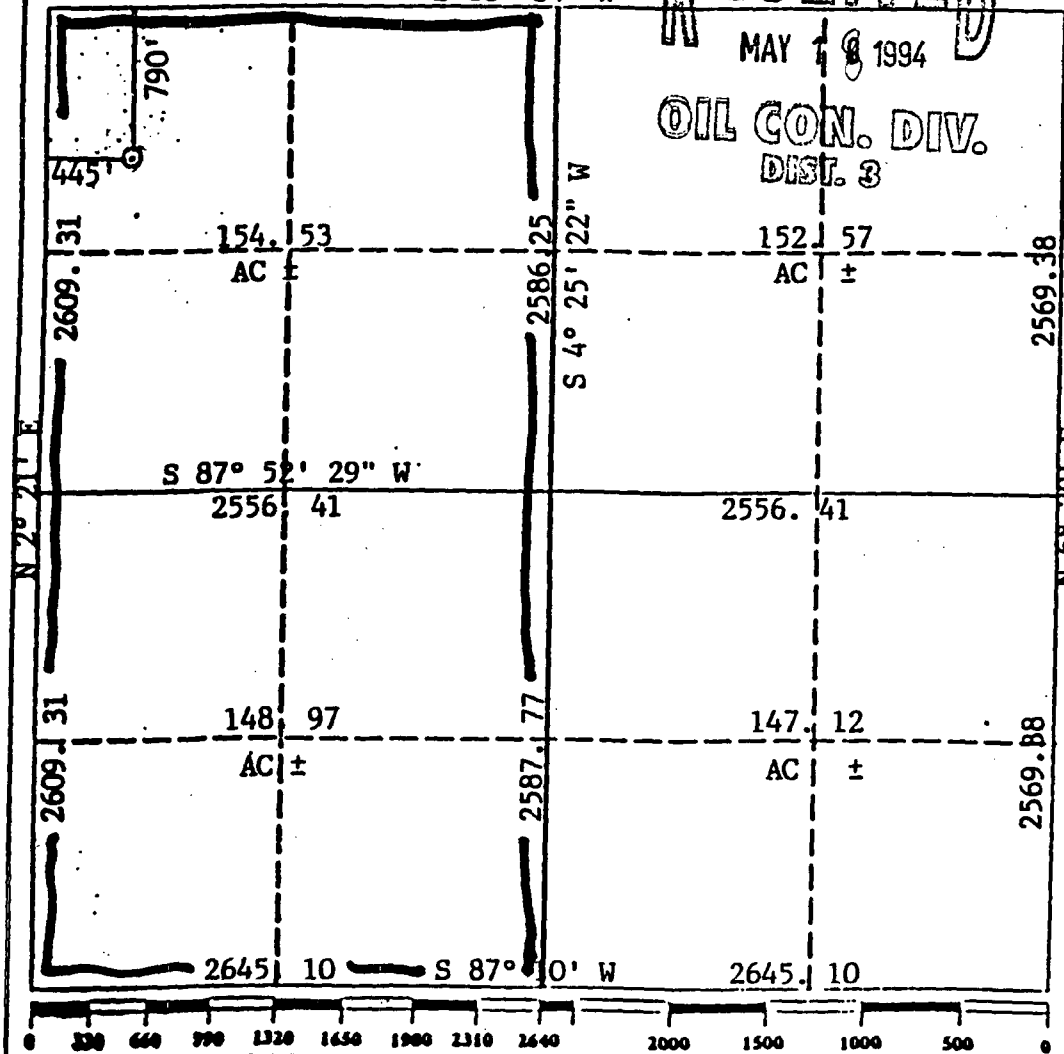
Date Surveyed

October 22, 1993

Signature & Seal of B. Tullis  
Professional Surveyor  
Restake January 4, 1994

Cecil B. Tullis

Certification No. 9670 ESSIONAL



OIL CONSERVATION DIVISION  
RECEIVED

SUBMIT IN TRIPPLICATE\*  
(Other instructions on  
reverse side)

Form approved.  
Budget Bureau No. 1004-0136  
Expires August 31, 1985

UNITED STATES  
DEPARTMENT OF THE INTERIOR  
BUREAU OF LAND MANAGEMENT

30-039-25187

APPLICATION FOR PERMIT TO DRILL, DEEPEN, OR PLUG BACK

1a. TYPE OF WORK

DRILL ☒ XX

DEEPEN ☐

PLUG BACK ☐

b. TYPE OF WELL

OIL  
WELL ☐

GAS  
WELL ☒ XX

OTHER

SINGLE  
ZONE ☐

MULTIPLE  
ZONE ☒ XX

2. NAME OF OPERATOR

Union Oil Company of California

3. ADDRESS OF OPERATOR

3300 N. Butler Ste 200  
Farmington, NM 87401

4. LOCATION OF WELL (Report location clearly and in accordance with any State requirements.)

At surface

At proposed prod. zone 790 FNL & 790 FWL  
Same

14. DISTANCE IN MILES AND DIRECTION FROM NEAREST TOWN OR POST OFFICE\*

20 miles SE of Blanco, NM

10. DISTANCE FROM PROPOSED\*  
LOCATION TO NEAREST  
PROPERTY OR LEASE LINE, FT.  
(Also to nearest drlg. unit line, if any)

790

16. NO. OF ACRES IN LEASE

160

17. NO. OF ACRES ASSIGNED  
TO THIS WELL

W/2 320

18. DISTANCE FROM PROPOSED LOCATION\*  
TO NEAREST WELL, DRILLING, COMPLETED,  
OR APPLIED FOR, ON THIS LEASE, FT.

N/A

19. PROPOSED DEPTH

7740'

20. ROTARY OR CABLE TOOLS

Rotary

21. ELEVATIONS (Show whether DF, RT, GR, etc.)

6642' Gr.

This action is subject to technical and  
procedural review pursuant to 43 CFR 3165.3  
and approval pursuant to 43 CFR 3165.4

22. APPROX. DATE WORK WILL START\*

04/15/92

23. PROPOSED CASING AND CEMENTING PROGRAM

DRILLING OPERATIONS AUTHORIZED ARE  
SUBJECT TO COMPLIANCE WITH ATTACHED

| SIZE OF HOLE   | SIZE OF CASING | WEIGHT PER FOOT | SETTING DEPTH | GENERAL QUANTITIES OF CEMENT     |
|--|----------------|-----------------|---------------|----------------------------------|
| 12.25"   | 9.625"         | 36#             | 350           | 200sxs CL B (236 cuft)           |
| 8.75"  | 7.00"          | 23#             | 7740          | 350sxs (655 cuft) extended       |
| Stage tool @ 4500' +-<br>ClB. 2nd stage 500 sxs (935cuft) extended Cl B. tail w/ 150 sxs (177cuft)<br>Cl. B w/2% CaCl2 |                |                 |               | Cl. B. tail w/ 150 sxs (177cuft) |

Union Oil Company of California wishes to advise that we intend to drill a 12.25" hole to 350' with mud. Run 9.625" casing to 350' and cement to surface with 200 sxs Cl B cement. Nipple up and test BOP. Drill 8.75" hole to 7740' with mud. Log well. Run 7" production casing to 7740'. Cement with 350 sxs extended Cl. B. tailed with 150 sxs Cl. B. Second stage 500 sxs extended Cl. B tailed by 150 sxs Cl.B. with 2% CaCl2. Perforate pay section in the Mesaverde and Dakota Sands. Stimulate as required.

RECEIVED

JUN 18 1992

IN ABOVE SPACE DESCRIBE PROPOSED PROGRAM: If proposal is to deepen or plug back, give data on present productive zone and proposed new productive zone. If proposal is to drill or deepen directionally, give permit data on subsurface locations and measured and true vertical depths. Give blowout preventer program, if any.

24.

DIST. 3

SIGNED

TITLE

Dist...Drlg. Supt.

APPROVED  
AS AMENDED

(This space for Federal or State office use)

PERMIT NO.

APPROVAL DATE

APPROVED BY

TITLE

CONDITIONS OF APPROVAL, IF ANY:

JUN 16 1992  
AREA MANAGER

NMOCD

\*See Instructions On Reverse Side

State of New Mexico  
Energy, Minerals and Natural Resources Department

OIL CONSERVATION DIVISION

P.O. Box 2088  
Santa Fe, New Mexico 87504-2088

Form C-102  
Revised 1-1-89

RECEIVED  
BLM

DISTRICT I  
P.O. Box 1980, Hobbs, NM 88240

DISTRICT II  
P.O. Drawer DD, Artesia, NM 88210

DISTRICT III  
1000 Rio Brazos Rd., Aztec, NM 87410

WELL LOCATION AND ACREAGE DEDICATION PLAT

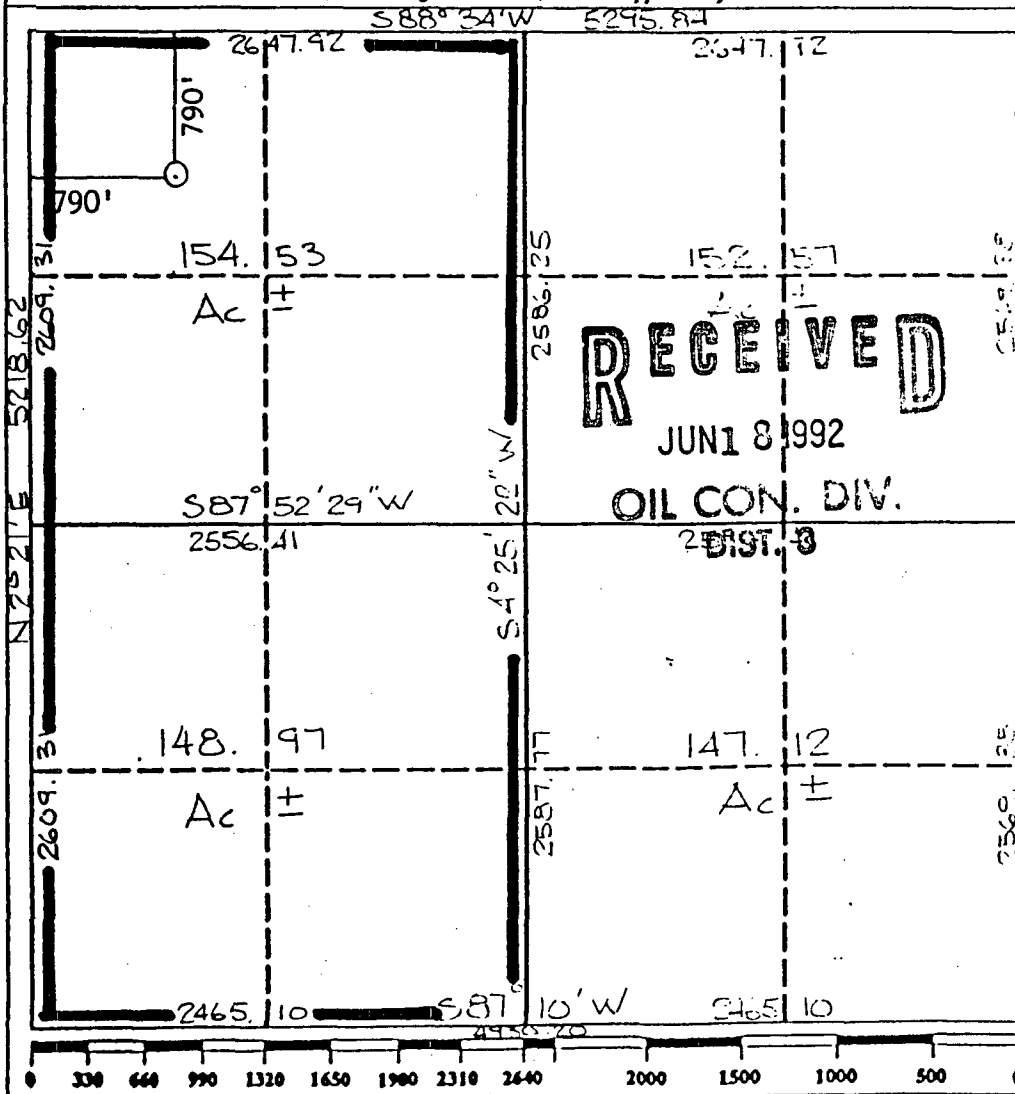
All Distances must be from the outer boundaries of the section

|                    |               |                  |                             |                      |                   |
|--------------------|---------------|------------------|-----------------------------|----------------------|-------------------|
| Operator<br>UNOCAL |               |                  | Lease<br>RINCON <i>Unit</i> |                      | Well No.<br>133-E |
| Unit Letter<br>D   | Section<br>14 | Township<br>27 N | Range<br>7W                 | County<br>Rio Arriba |                   |

Actual Footage Location of Well:

|  |   |                      |  |
|--|---|----------------------|--|
| 790 feet from the North line and 790 feet from the West line |   |                      |  |
| Ground level Elev.<br>6642                                   | Producing Formation<br>Mesaverde/Dakota | Pool<br>Blanco/Basin | Dedicated Acreage:<br>W/2 320/10 320 Acres |

1. Outline the acreage dedicated to the subject well by colored pencil or hatchure marks on the plat below.
2. If more than one lease is dedicated to the well, outline each and identify the ownership thereof (both as to working interest and royalty).
3. If more than one lease of different ownership is dedicated to the well, have the interest of all owners been consolidated by communitization, unitization, force-pooling, etc.?  
☒ Yes ☐ No If answer is "yes" type of consolidation Unitization  
If answer is "no" list the owners and tract descriptions which have actually been consolidated. (Use reverse side of this form if necessary.)  
No allowable will be assigned to the well until all interests have been consolidated (by communitization, unitization, forced-pooling, or otherwise) or until a non-standard unit, eliminating such interest, has been approved by the Division.



OPERATOR CERTIFICATION

I hereby certify that the information contained herein is true and complete to the best of my knowledge and belief.

|  |
|--|
| Signature<br><i>Robert C. Frank</i>        |
| Printed Name<br>Robert C. Frank            |
| Position<br>Agent                          |
| Company<br>Union Oil Company of California |
| Date<br>March 23, 1992                     |

SURVEYOR CERTIFICATION

I hereby certify that the well location shown on this plat was plotted from field notes of actual surveys made by me or under my supervision, and that the same is true and correct to the best of my knowledge and belief.

|   |
|---|
| Date Surveyed<br>January 20, 1992                                 |
| Signature of Surveyor<br><i>[Signature]</i>                       |
| Professional Surveyor<br>REGISTERED PROFESSIONAL SURVEYOR<br>9672 |

Exhibit 1

CMD :  
OG5SECT

ONGARD  
INQUIRE LAND BY SECTION

11/04/99 18:04:53  
OGOMES -TPGE  
PAGE NO: 1

Sec : 14 Twp : 27N Rng : 07W Section Type : NORMAL

|   |                                      |   |   |
|---|--------------------------------------|---|---|
| D<br>40.00<br><br>Federal owned<br>U<br>A | C<br>40.00<br><br>Federal owned<br>U | 2<br>38.64<br><br>Federal owned<br>U<br>A   | 1<br>38.41<br><br>Federal owned<br>U      |
| E<br>40.00<br><br>Federal owned<br>U      | F<br>40.00<br><br>Federal owned<br>U | 3<br>37.96<br><br>Federal owned<br>U<br>A A | 4<br>37.72<br><br>Federal owned<br>U<br>A |

PF01 HELP  
PF07 BKWD

PF02  
PF08 FWD

PF03 EXIT  
PF09 PRINT

PF04 GoTo  
PF10 SDIV

PF05  
PF11

PF06  
PF12

CMD :  
OG5SECT

ONGARD  
INQUIRE LAND BY SECTION

11/04/99 18:05:29  
OGOMES -TPGE  
PAGE NO: 2

Sec : 14 Twp : 27N Rng : 07W Section Type : NORMAL

|                                      |   |  |                                       |
|--------------------------------------|---|--|---------------------------------------|
| 8<br>37.74<br><br>Federal owned<br>U | 7<br>37.50<br><br>Federal owned<br>U<br>A A | 6<br>37.26<br><br>Federal owned<br>U         | 5<br>37.02<br><br>Federal owned<br>U  |
| 9<br>37.02<br><br>Federal owned<br>U | 10<br>36.80<br><br>Federal owned<br>U       | 11<br>36.56<br><br>Federal owned<br>U<br>A A | 12<br>36.32<br><br>Federal owned<br>U |

|           |          |            |           |      |      |
|-----------|----------|------------|-----------|------|------|
| PF01 HELP | PF02     | PF03 EXIT  | PF04 GoTo | PF05 | PF06 |
| PF07 BKWD | PF08 FWD | PF09 PRINT | PF10 SDIV | PF11 | PF12 |



STATE OF NEW MEXICO

ENERGY, MINERALS AND NATURAL RESOURCES DEPARTMENT

OIL CONSERVATION DIVISION



BRUCE KING  
GOVERNOR

ANITA LOCKWOOD  
CABINET SECRETARY

POST OFFICE BOX 2038  
STATE LAND OFFICE BUILDING  
SANTA FE NEW MEXICO 87504  
(505) 827-5500

April 20, 1994

Union Oil Company of California (UNOCAL)  
P.O. Box 2620  
Casper, WY 82602-2620

Attention: Jim Benson

*Administrative Order NSL-3378*

Dear Mr. Benson:

Reference is made to your application dated February 16, 1994, for a non-standard gas well location for the proposed Rincon Well No. 133E to be drilled 790 feet from the North line and 445 feet from the West line (Unit D) of Section 14, Township 27 North, Range 7 West, NMPM, to test both the Blanco-Mesaverde and Basin-Dakota Pools, Rio Arriba County, New Mexico. Lots 7, 8, 9 and 10 and the NW/4 (W/2 equivalent) of said Section 14 shall be dedicated to the well forming a standard 309.06-acre gas spacing and proration unit for both pools.

By the authority granted me under the provisions of Rule 2(c) of the Special Rules and Regulations for both the Blanco-Mesaverde and Basin-Dakota Pools, as promulgated by Division the above-described unorthodox gas well location is hereby approved.

Sincerely,

William J. LeMay  
Director

WJL/MES/amg

cc: Oil Conservation Division - Aztec  
US Bureau of Land Management - Farmington