



ENGINEERING & PRODUCTION CORP.

OIL CONSERVATION DIVISION  
RECEIVED

'95 APR 3 PM 8 52

Petroleum Engineering Consulting  
Lease Management  
Contract Pumping



7415 East Main  
Farmington, New Mexico 87402  
(505) 327-4892

March 27, 1995

Mr. William J. LeMay  
New Mexico Oil Conservation Division  
P.O. Box 2088  
Santa Fe, NM 87504-2088

Re: Non-Standard Location  
Northwest Pipeline Corporation  
Rosa Unit #72  
2315' FSL, 620' FEL  
Section 6, T31N R5W  
Rio Arriba, NM  
Blanco Mesa Verde

Dear Mr. LeMay,

This is a request on behalf of Northwest Pipeline Corporation for administrative approval for a non-standard gas location in the Blanco Mesa Verde pool for the referenced well.

At the request of the Bureau of Land Management, the surface owner, this well has been located to utilize part of an existing well pad. An alternate location was staked on a ridge in the southeast part of this section. The alternate location was located in a heavily wooded area which is prime habitat for deer and elk. The alternate location would also have required approximately 1500' of new road and pipeline right-of-way up a relatively steep hillside that would have been near several archaeological sites.

The proposed spacing unit is all of Section 6, T31N, R5W, which is 264.60 acres due to a variation in the legal subdivision of the U.S. Public Land Surveys.

As the Unit Operator of the Rosa Unit, Northwest Pipeline is the only offset operator. Attached is a plat indicating the well location and proposed spacing unit and a topographical map of the area.



Thank you for your consideration and approval of this application. If you have any questions please do not hesitate to call upon me.

Sincerely,

A handwritten signature in cursive script that reads "Paul C. Thompson".

Paul C. Thompson, P.E.  
President, Walsh Engineering

cc: Mark McCallister, WPC  
NMOCD Aztec NM  
BLM Farmington NM

District I  
PO Box 1988, Hobbs, NM 88241-1988  
District II  
PO Drawer DD, Artesia, NM 88211-0719  
District III  
1000 Rio Brazos Rd., Aztec, NM 87410  
District IV  
PO Box 2088, Santa Fe, NM 87504-2088

State of New Mexico  
Energy, Minerals & Natural Resources Department

OIL CONSERVATION DIVISION  
PO Box 2088  
Santa Fe, NM 87504-2088

Form C-102  
Revised February 21, 1994  
Instructions on back  
Submit to Appropriate District Office  
State Lease - 4 Copies  
Fee Lease - 3 Copies

☐ AMENDED REPORT

WELL LOCATION AND ACREAGE DEDICATION PLAT

API Number		Pool Code 72319	Pool Name BLANCO MESA VERDE
Property Code 008480	Property Name Rosa Unit		Well Number 72
OGRID No. 16189	Operator Name Northwest Pipeline Production		Elevation 6335'

<sup>10</sup> Surface Location

UL or lot no. I	Section 6	Township 31 N	Range 5 W	Lot Ida	Feet from the 2315	North/South line South	Feet from the 620	East/West line East	County R.A.
--------------------	--------------	------------------	--------------	---------	-----------------------	---------------------------	----------------------	------------------------	----------------

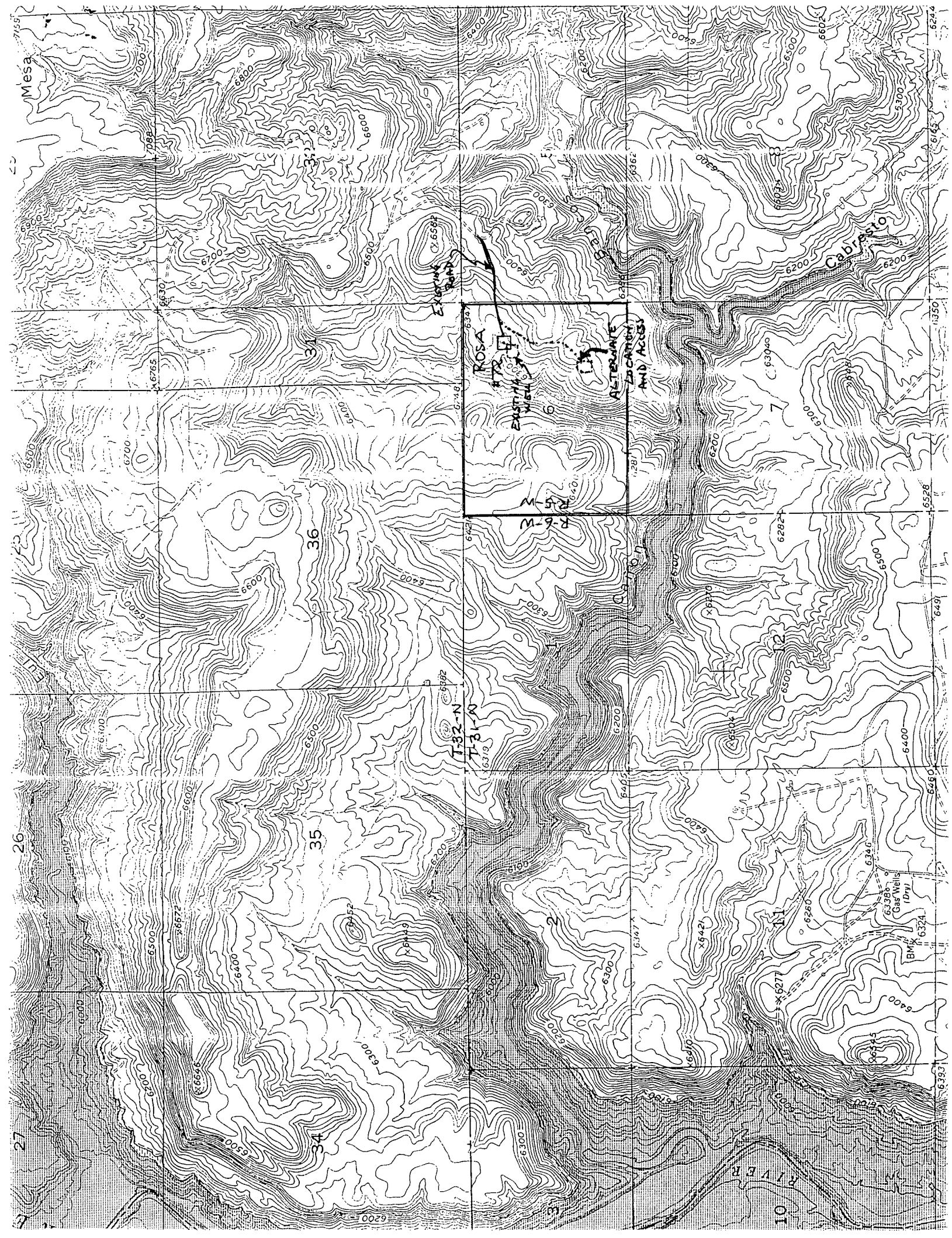
<sup>11</sup> Bottom Hole Location If Different From Surface

UL or lot no.	Section	Township	Range	Lot Ida	Feet from the	North/South line	Feet from the	East/West line	County
---------------	---------	----------	-------	---------	---------------	------------------	---------------	----------------	--------

<sup>12</sup> Dedicated Acres 264.60	<sup>13</sup> Joint or Infill	<sup>14</sup> Consolidation Code U	<sup>15</sup> Order No.
---	-------------------------------	---------------------------------------	-------------------------

NO ALLOWABLE WILL BE ASSIGNED TO THIS COMPLETION UNTIL ALL INTERESTS HAVE BEEN CONSOLIDATED  
OR A NON-STANDARD UNIT HAS BEEN APPROVED BY THE DIVISION

	<p><sup>17</sup> OPERATOR CERTIFICATION</p> <p>I hereby certify that the information contained herein is true and complete to the best of my knowledge and belief.</p> <p><i>Paul C. Thompson</i> Signature Paul C. Thompson, PE (AGENT) Printed Name President Walsh Engr. &amp; Prod. Corp. Title 3/28/95 Date</p>
	<p><sup>18</sup> SURVEYOR CERTIFICATION</p> <p>I hereby certify that the well location shown on this plat was plotted from field notes of actual surveys made by me or under my supervision, and that the same is true and correct to the best of my belief.</p> <p>3-15-95 Date of Survey Signature and Seal of Professional Engineer <i>HELEN C. EDWARDS</i> 8857 Certificate Number</p>



OIL CONSERVATION DIVISION  
RECEIVED

'95 MAR 31 PM 8 52



**WALSH**

ENGINEERING & PRODUCTION CORP.

Petroleum Engineering Consulting  
Lease Management  
Contract Pumping

7415 East Main  
Farmington, New Mexico 87402  
(505) 327-4892

March 24, 1995

Mr. William J. LeMay  
New Mexico Oil Conservation Division  
P.O. Box 2088  
Santa Fe, NM 87504-2088

Re: Non-Standard Gas Unit  
Northwest Pipeline Corporation  
Rosa Unit #72  
2315' FSL, 620' FEL  
Section 6, T31N R5W  
Rio Arriba, NM  
Blanco Mesa Verde

Dear Mr. LeMay,

This is a request on behalf of Northwest Pipeline Corporation for administrative approval for a non-standard gas unit in the Blanco Mesa Verde pool for the referenced well. The proposed spacing unit is all of Section 6, T31N, R5W, which is 264.60 acres due to a variation in the legal subdivision of the U.S. Public Land Surveys.

As the Unit Operator of the Rosa Unit, Northwest Pipeline is the only offset operator. Attached is a plat indicating the well location and proposed spacing unit.

Thank you for your consideration and approval of this application. If you have any questions please do not hesitate to call upon me.

Sincerely,

*Paul C. Thompson*

Paul C. Thompson, P.E.  
President, Walsh Engineering

cc: Mark McCallister, WPC  
NMOCD Aztec NM  
BLM Farmington NM

District I  
PO Box 1908, Hobbs, NM 88241-1908  
District II  
PO Drawer DD, Arthola, NM 88211-0719  
District III  
1000 Rio Brazos Rd., Aztec, NM 87410  
District IV  
PO Box 2008, Santa Fe, NM 87504-2008

State of New Mexico  
Energy, Minerals & Natural Resources Department

OIL CONSERVATION DIVISION  
PO Box 2088  
Santa Fe, NM 87504-2088

Form C-102  
Revised February 21, 1994  
Instructions on back  
Submit to Appropriate District Office  
State Lease - 4 Copies  
Fee Lease - 3 Copies

☐ AMENDED REPORT

WELL LOCATION AND ACREAGE DEDICATION PLAT

* API Number		* Pool Code 72319	* Pool Name BLANCO MESA VERDE
* Property Code 008480	* Property Name Rosa Unit		* Well Number 72
* OGRID No. 16189	* Operator Name Northwest Pipeline Production		* Elevation 6335'

10 Surface Location

UL or lot no. I	Section 6	Township 31 N	Range 5 W	Lot Ids	Feet from the 2315	North/South line South	Feet from the 620	East/West line East	County R.A.
--------------------	--------------	------------------	--------------	---------	-----------------------	---------------------------	----------------------	------------------------	----------------

11 Bottom Hole Location If Different From Surface

UL or lot no.	Section	Township	Range	Lot Ids	Feet from the	North/South line	Feet from the	East/West line	County
---------------	---------	----------	-------	---------	---------------	------------------	---------------	----------------	--------

12 Dedicated Acres 264.60	13 Joint or Infill N	14 Consolidation Code U	15 Order No.
------------------------------	-------------------------	----------------------------	--------------

NO ALLOWABLE WILL BE ASSIGNED TO THIS COMPLETION UNTIL ALL INTERESTS HAVE BEEN CONSOLIDATED  
OR A NON-STANDARD UNIT HAS BEEN APPROVED BY THE DIVISION

16	17 OPERATOR CERTIFICATION I hereby certify that the information contained herein is true and complete to the best of my knowledge and belief  Paul C. Thompson Signature Paul C. Thompson, PE (AGENT) Printed Name President Walsh Engr. & Prod. Corp. Title 3/23/95 Date			
18 SURVEYOR CERTIFICATION I hereby certify that the well location shown on this plat was plotted from field notes of actual surveys made by me or under my supervision, and that the same is true and correct to the best of my belief. 3-15-95 Date of Survey Signature and Seal of Professional Surveyor HERE C. EDWARDS 8857 8857 Certificate Number				

CMD :  
OG5SECT

ONGARD  
INQUIRE LAND BY SECTION

03/31/95 16:01:34  
OGOMES -EMG3  
PAGE NO: 1

Sec : 06 Twp : 31N Rng : 05W Section Type : NORMAL

	3 9.92  Federal owned U	2 11.49  Federal owned	1 11.79  Federal owned

PF01 HELP  
PF07 BKWD

PF02  
PF08 FWD

PF03 EXIT  
PF09 PRINT

PF04 GoTo  
PF10 SDIV

PF05  
PF11

PF06  
PF12

1 1  
9.92  
11.49  

---

21.41  
11.79  

---

33.20

CMD :  
OG5SECT

ONGARD  
INQUIRE LAND BY SECTION

03/31/95 16:01:49  
OGOMES -EMG3  
PAGE NO: 2

Sec : 06 Twp : 31N Rng : 05W Section Type : NORMAL

	4 35.56  Federal owned U	J 40.00  Federal owned U	I 40.00  Federal owned U A
	5 35.80  Federal owned	O 40.00  Federal owned U	P 40.00  Federal owned U

PF01 HELP  
PF07 BKWD

PF02  
PF08 FWD

PF03 EXIT  
PF09 PRINT

PF04 GoTo  
PF10 SDIV

PF05  
PF11

PF06  
PF12

11  
35.56  
35.80  
71.36  
33.20  
104.56  
16  
264.56



## **Mike Stogner**

---

**From:** Ernie Busch  
**To:** Mike Stogner  
**Subject:** WALSH ENG & PROD CORP (NSL)  
**Date:** Thursday, April 20, 1995 10:49AM  
**Priority:** High

ROSA UNIT #72  
2315' FSL ; 620' FEL  
I-06-31N-05W  
RECOMMEND: APPROVAL

**Mike Stogner**

---

**From:** Ernie Busch  
**To:** Mike Stogner  
**Subject:** WALSH ENGINEERING & PRODUCTION CORP (NSP)  
**Date:** Tuesday, April 11, 1995 2:20PM  
**Priority:** High

ROSA UNIT #72  
2315' FSL; 620' FEL  
I-06-31N-05W  
RECOMMEND: APPROVAL

THIS WELL AND THE ROSA UNIT #41A WELL NEED NSL APPROVAL AS WELL

*NSL-3511 (NSP)*