

District I  
1625 N. French Dr., Hobbs, NM 88240  
District II  
1301 W. Grand Avenue, Artesia, NM 88210  
District III  
1000 Rio Brazos Road, Aztec, NM 87410  
District IV  
1220 S. St. Francis Dr., Santa Fe, NM 87505

State of New Mexico  
Energy Minerals and Natural Resources

Oil Conservation Division  
1220 South St. Francis Dr.  
Santa Fe, NM 87505

NMOCD

Form C-141  
Revised October 10, 2003

Submit 2 Copies to appropriate  
District Office in accordance  
with Rule 116 on back  
side of form

Release Notification and Corrective Action

1RP-1157

OPERATOR

☐ Initial Report

☒ Final Report

Name of Company	Plains Marketing, L. P.	Contact	Camille Bryant
Address	3112 W. US Hwy 82, Lovington, NM 88260	Telephone No.	(575) 441-0965
Facility Name	LEA STATION UNIT # 7 PUMP	Facility Type	Pipeline Pump
SRS:	2005-00292		

Surface Owner	Plains Marketing, L. P.	Mineral Owner		Lease No.	
---------------	-------------------------	---------------	--	-----------	--

LOCATION OF RELEASE

Unit Letter	Section	Township	Range	Feet from the	North/South Line	Feet from the	East/West Line	County
F	28	20S	37E					Lea

Latitude 32°, 32', 47.7" North Longitude 103°, 15', 30.2" West.

NATURE OF RELEASE

Type of Release	Crude Oil	Volume of Release	95 barrels	Volume Recovered	81 barrels
Source of Release	Pump	Date and Hour of Occurrence	08 Dec 05 @ 0645	Date and Hour of Discovery	08 Dec 05 @ 0700
Was Immediate Notice Given?	XX Yes <input type="checkbox"/> No <input type="checkbox"/> Not Required	If YES, To Whom?	Larry Johnson		
By Whom?	Camille Bryant	Date and Hour	08 Dec 05 @ 1345		
Was a Watercourse Reached?	<input type="checkbox"/> Yes XX <input type="checkbox"/> No	If YES, Volume Impacting the Watercourse.			

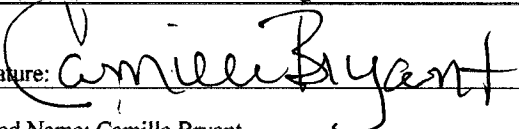
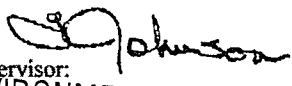
If a Watercourse was Impacted, Describe Fully.\*

Describe Cause of Problem and Remedial Action Taken.\* Mechanical seal failure on pump caused release of sour crude oil. The unit was shutdown and the seal was replaced. The gravity of the crude oil is 37 with an H2S content of less than 10 ppm. The unit pumps approximately 8,000 barrels of oil per day.

Describe Area Affected and Cleanup Action Taken.\* The crude oil release site was excavated; the impacted soil placed on a poly-liner adjacent to the excavation, confirmation soil samples were collected from the floor and walls of the excavation areas. Once the excavation confirmation soil samples were at or below NMOCD regulatory standards, approximately 546 cubic yards of stockpiled soils were transported to LSLF, backfill material was obtained from LSLF and the site contoured to the original surrounding rangeland grade.

SEE ATTACHED BASIN ENVIRONMENTAL SERVICE TECHNOLOGIES CLOSURE REQUEST, DATED 02 MAY 2008, WITH ATTACHMENTS FOR DETAILS OF REMEDIAL ACTIVITIES CONDUCTED.

I hereby certify that the information given above is true and complete to the best of my knowledge and understand that pursuant to NMOCD rules and regulations all operators are required to report and/or file certain release notifications and perform corrective actions for releases, which may endanger public health or the environment. The acceptance of a C-141 report by the NMOCD marked as "Final Report" does not relieve the operator of liability should their operations have failed to adequately investigate and remediate contamination that pose a threat to ground water, surface water, human health or the environment. In addition, NMOCD acceptance of a C-141 report does not relieve the operator of responsibility for compliance with any other federal, state, or local laws and/or regulations.

Signature: 	OIL CONSERVATION DIVISION	
Printed Name: Camille Bryant	Approved by District Supervisor: 	ENVIRONMENTAL ENGINEER
Title: Remediation Coordinator	Approval Date: 5-16-08	Expiration Date: _____
E-mail Address: cjbryant@paalp.com	Conditions of Approval:	1RP-1157
Date: 02 May 2008	Phone: (575) 441-0965	

# *Basin Environmental Service Technologies, LLC*

2800 Plains Highway  
P. O. Box 301  
Lovington, New Mexico 88260  
kdutton@basinenv.com  
Office: (575) 396-2378 Fax: (575) 396-1429



02 May 2008

Mr. Larry Johnson  
New Mexico Energy, Minerals and Natural Resources Department  
New Mexico Oil Conservation Division, District 1  
1625 N. French Drive  
Hobbs, New Mexico 88240

**RECEIVED**

MAY 16 2008

**HOBBS OCD**

Re: Closure Request, Lea Station Unit # 7 Pump (231735)  
Plains Marketing, L. P. Preliminary Site Investigation Report and  
Remediation/Closure Plan, dated 06 June 2007  
Unit F (SE ¼, NW ¼) Section 28, Township 20 South, Range 37 East  
Lea County, New Mexico  
Plains SRS Number: 2005-00292  
NMOCD File Number: 1RP-1157

Dear Mr. Johnson:

Basin Environmental Service Technologies, LLC (Basin), on behalf of Plains Marketing, L. P. (Plains), is submitting this request for closure of the Lea Station Unit # 7 Pump remediation site at the above referenced location. Soil remediation activities were successfully accomplished as proposed in the New Mexico Oil Conservation Division (NMOCD) approved Preliminary Site Investigation Report and Remediation/Closure Plan, dated 06 June 2007.

Basin, at the request of Plains, mobilized to a crude oil release on 08 December 2005, located at the Plains Lea Station Pumping Facility, Unit # 7 Pump after Plains operations personnel contained the crude oil release by replacing a malfunctioning seal on the Unit # 7 Pump. Upon arrival at the release site, Basin initiated excavation of the release point and flow path area with the impacted soil stockpiled on a 6-mil poly-liner adjacent to the site. As reported on the initial C-141, dated 09 December 2005, approximately 95 barrels of crude oil were released and 81 barrels were recovered. The NMOCD ranking criteria for the Lea Station Unit # 7 Pump release site was >19, which sets the soil remediation levels for benzene, toluene, ethylbenzene, and xylenes (BTEX), and total petroleum hydrocarbons – gasoline range organics/diesel range organics (TPH-

GRO/DRO) at 10 mg/kg for benzene, 50 mg/kg for total BTEX and 100 mg/kg for TPH-GRO/DRO.

The following NMOCD and NMSLO approved remedial activities were accomplished at the Lea Station Unit # 7 Pump release site:

- In December 2005, Basin conducted excavation activities at the release point and flow path areas. The final dimensions of the excavated area were approximately 69 feet long by 30 feet wide (north to south on caliche pad), 168 feet long by 6 feet wide (west to east on caliche pad) and 120 feet long by 35 feet wide (north to south on impacted soil) with depths ranging from approximately 1 foot to 6 feet below ground surface (bgs). Approximately 546 cubic yards of impacted caliche and soil were placed on a 6-mil poly-liner adjacent to the excavation, which were subsequently transported to Plains Lea Station Land Farm (LSLF). See attached Figure 2, Excavation Site Map.
- On 13 December 2005, thirteen (13) soil samples were collected from the floor of the excavated caliche pad area and field screened with a Photoionization Detector (PID). Field screening results of the thirteen (13) soil samples indicated that Volatile Organic Compounds (VOCs) were below NMOCD regulatory guidelines (<100 ppm). Due to Lea Station being a high volume crude oil transfer station with transport trucks operating on a 24-hour schedule, clean caliche backfill was obtained from a nearby landowner and the caliche pad was backfilled and leveled to allow unhindered transport truck operations.
- On 15 December 2005, eight (8) soil samples were collected from the floor and walls of the excavated north to south crude impacted soil area and field screened with a PID. Field screening results indicated VOCs were below NMOCD regulatory guidelines (100 ppm) for the eight (8) soil samples.
- On 26 January 2007, two (2) confirmation soil samples were collected from the north to south impacted soil area at approximately 1-foot bgs and analyzed for constituent concentrations of total petroleum hydrocarbons – gasoline range organics/diesel range organics (TPH-GRO/DRO). Laboratory results indicated both confirmation soil samples exceeded NMOCD regulatory standards for constituent concentrations of TPH-GRO/DRO at 262 mg/kg and 215 mg/kg, respectively.
- In April 2007, over excavation of the north to south impacted soil area was conducted to approximately 2.5 feet bgs. Two (2) soil samples were collected and analyzed for constituent concentrations of benzene, toluene, ethylbenzene and xylenes (BTEX) and TPH-GRO/DRO. Laboratory results indicated that constituent concentrations of BTEX and TPH-GRO/DRO were below NMOCD regulatory standards with the exception of the north floor soil sample, which exceeded NMOCD regulatory standards for TPH-GRO/DRO concentrations at 260 mg/kg.

- In April 2007, continued over excavation of the north floor area was accomplished to approximately six (6) feet bgs. A soil sample was collected and analyzed for constituent concentrations of BTEX and TPH-GRO/DRO. Laboratory results indicated that BTEX concentrations were below NMOCD regulatory standards and TPH-GRO/DRO concentrations exceeded NMOCD regulatory standards at 450 mg/kg.
- A Preliminary Site Investigation Report and Remediation/Closure Plan, dated 06 June 2007, was submitted to NMOCD Hobbs District I and subsequently approved. The approved plan included installation of a 20-mil poly liner at approximately six (6) feet bgs; backfill with clean material from LSLF and incorporate the Lea Station Unit # 7 Pump release area into the ongoing groundwater evaluation of Lea Station which has numerous monitoring wells up gradient, cross gradient and down gradient of the release. Additionally, NMOCD verbally requested further vertical delineation of the north floor area prior to installation of the 20-mil poly liner and backfilling activities.
- In July 2007, two (2) delineation trenches were installed at the excavation north floor area to depths of approximately 15 and 27 feet bgs, respectively. Soil samples were collected from both delineation trenches for analysis. Laboratory results reported constituent concentrations of BTEX and TPH-GRO/DRO were not detected above laboratory method detection limits with the exception of the 15 feet soil sample, which slightly exceeded NMOCD thresholds at 168 mg/kg. The laboratory results were presented to NMOCD, which approved installation of the 20-mil poly liner and backfilling of the excavation.
- In August 2007, installation of the 20-mil poly liner was completed, followed by backfilling of the excavation with clean backfill material obtained from LSLF. The excavation was contoured to the surrounding rangeland grade.

The remediation activities were completed in accordance with the NMOCD approved Plains Marketing, L. P., Preliminary Site Investigation Report and Remediation/Closure Plan, dated 06 June 2007. Based on the results of the NMOCD approved remediation activities conducted at the Lea Station Unit # 7 Pump release site, Basin, on behalf of Plains, requests that the NMOCD consider the soil issue at this site eligible for closure under the *New Mexico Oil Conservation Division Guidelines for Remediation of Leaks, Spills and Releases (1993)*.

Should you have any questions or comments, please contact me at (505) 441-2124.

Sincerely,



Ken Dutton

Basin Environmental Services

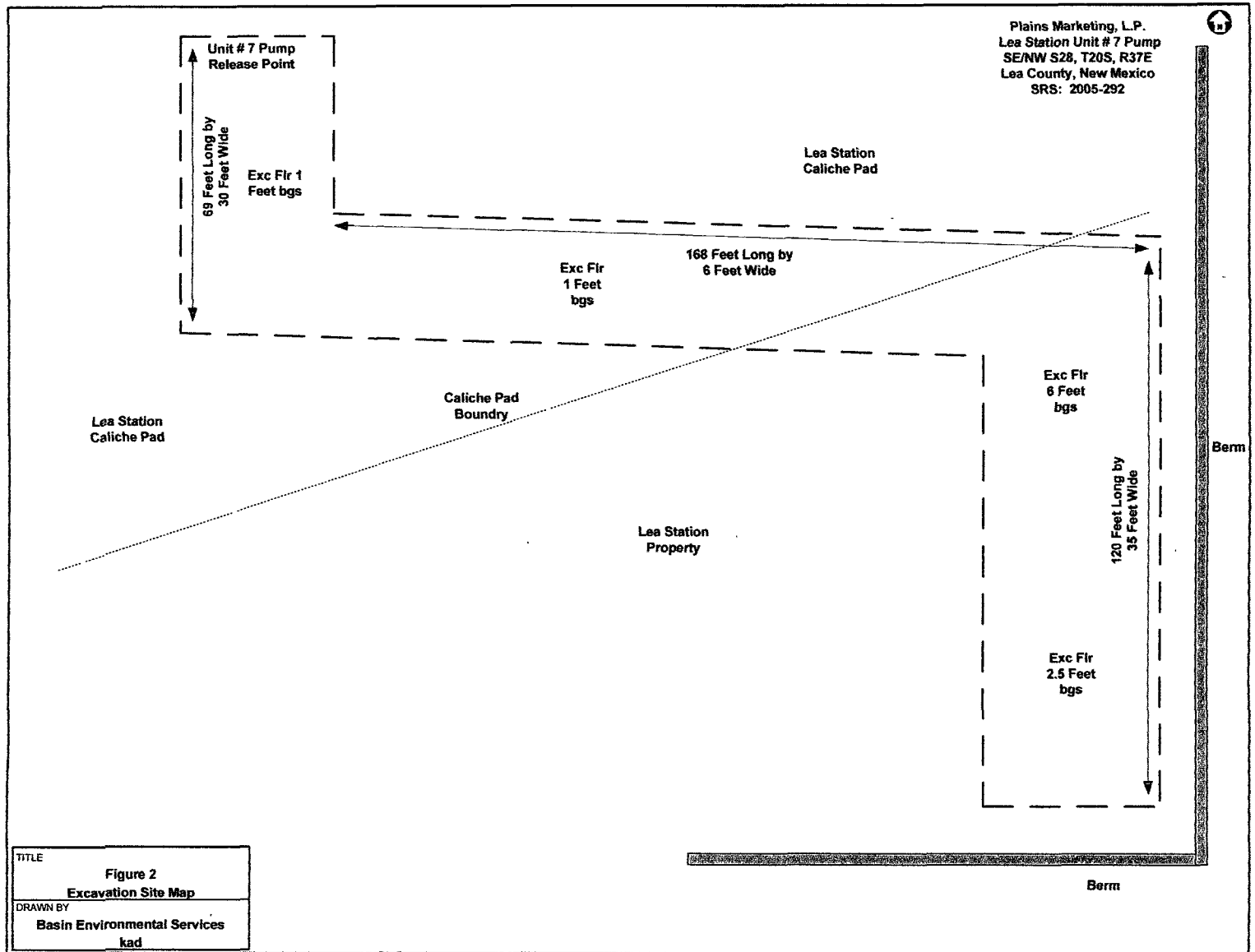
Attachments: Table 1, Soil Chemistry Results  
Figure 2, Excavation Site Map  
Figure 3, Excavation Site Map & PID Soil Sampling Locations  
Figure 4, Excavation Site Map & Soil Sampling Locations  
Digital Photos  
NMOCD C-141 (Initial)  
NMOCD C-141 (Final)

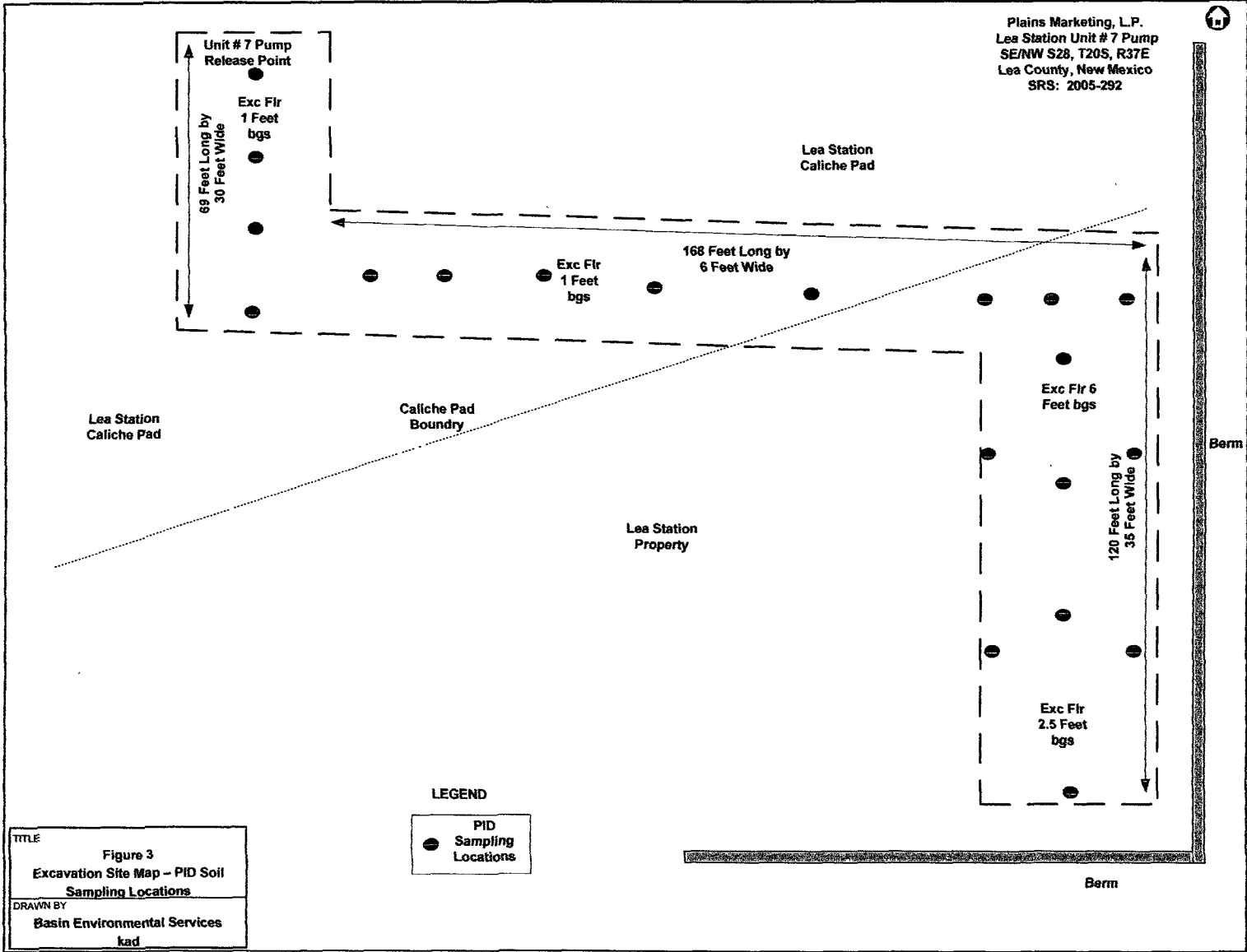
TABLE 1

## SOIL CHEMISTRY

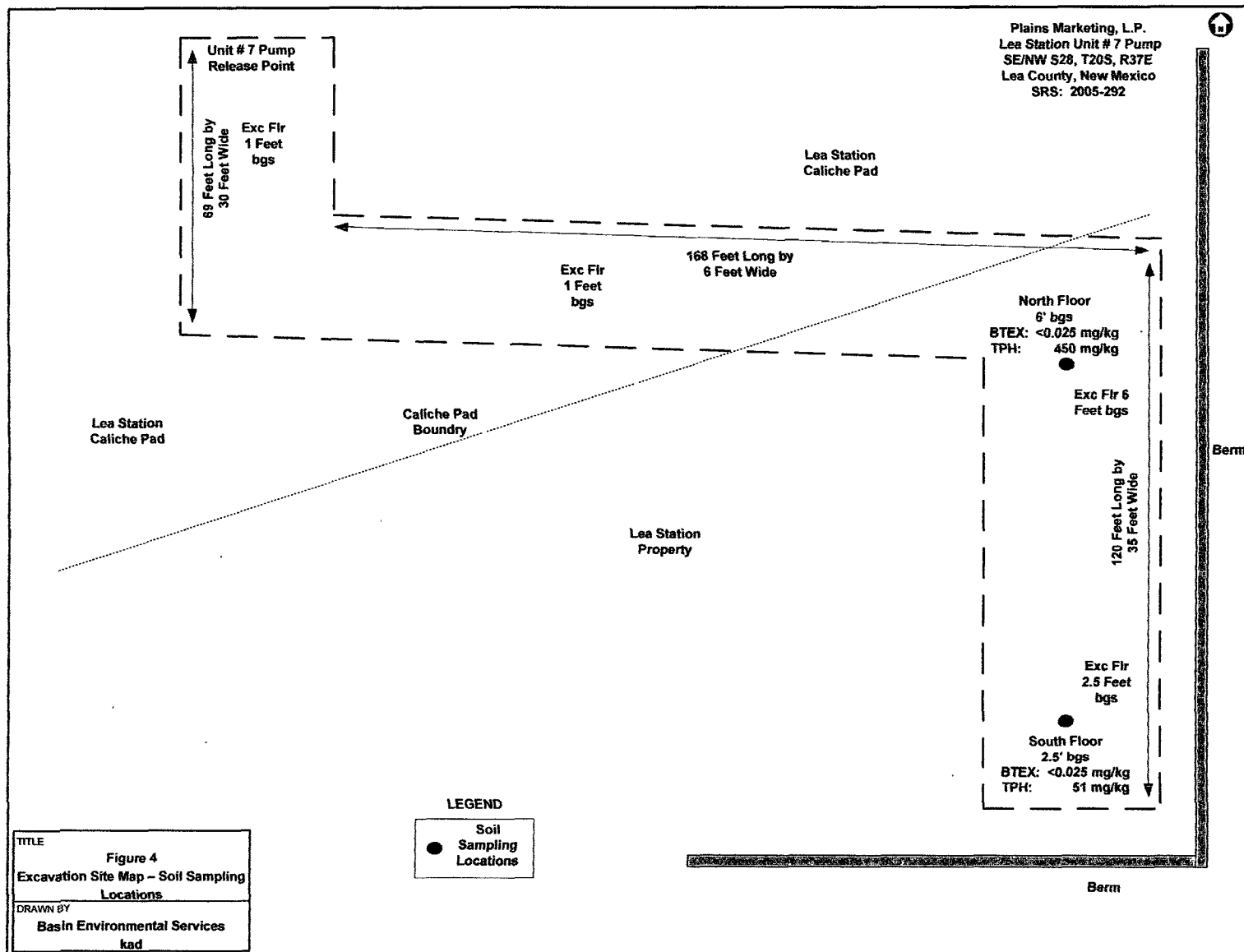
PLAINS MARKETING, L.P.  
 LEA STATION UNIT # 7 PUMP  
 LEA COUNTY, NEW MEXICO  
 SRS: 2005-00292  
 NMOCD REF NO: 1RP-1157

SAMPLE LOCATION	SAMPLE DEPTH (Below Normal Surface Grade)	SOIL STATUS	SAMPLE DATE	METHOD: EPA SW 846-8021B, 5030					METHOD: 8015M		TOTAL TPH	CHLORIDES
				BENZENE	TOLUENE	ETHYL- BENZENE	M,P- XYLENES	O-XYLENE	GRO	DRO		
				(mg/kg)	(mg/kg)	(mg/kg)	(mg/kg)	(mg/kg)	(mg/kg)	(mg/kg)	(mg/kg)	(mg/kg)
STCKPL	N/A	N/A	01/26/07						20.9	916	936	
EXCV FLR S	1' bgs	In-Situ	01/26/07						<10.0	215	215	15
EXCV FLR N	1' bgs	In-Situ	01/26/07						<10.0	262	262	
North Floor	2.5' bgs	In-Situ	04/17/07	<0.025	<0.025	<0.025	<0.025	<0.025	<10.0	260	260	
South Floor	2.5' bgs	In-Situ	04/17/07	<0.025	<0.025	<0.025	<0.025	<0.025	<10.0	51.2	51	
EXCV FLR NORTH	6' bgs	In-Situ	04/30/07	<0.025	<0.025	<0.025	<0.025	<0.025	10	439	450	
Excav Flr North 27'	27' bgs	In-Situ	07/05/07	<0.002	<0.002	<0.002	<0.004	<0.002	<10.0	<10.0	<10.0	
Excav Flr North 15'	15' bgs	In-Situ	07/31/07	<0.002	<0.002	<0.002	<0.004	<0.002	<10.0	168	168.0	
NMOCD CRITERIA				10	TOTAL BTEX 50						100	

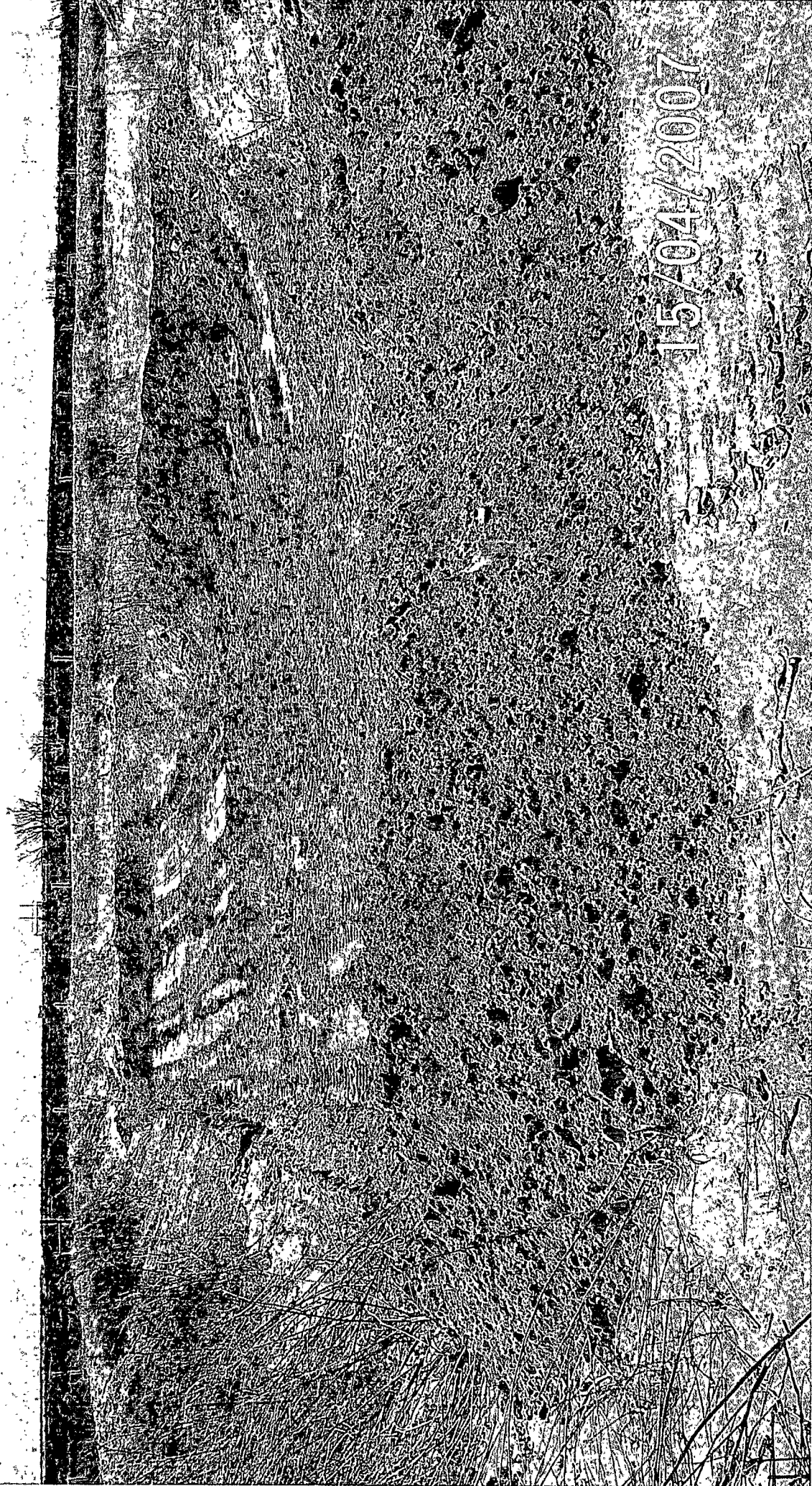








**Plains Marketing, L. P.  
Lea Station Unit # 7 Pump  
SE/NW S28, T20S, R37E  
Lea County, NM  
Plains SRS: 2005-00292**



15/04/2007

Plains Marketing, L. P.  
Lea Station Unit # 7 Pump  
SE/NW S28, T20S, R37E  
Lea County, NM  
Plains SRS: 2005-00292

44

15/04/2007



Plains Marketing, L.P.  
Lea Station Unit #7 Pump  
SE/NW S28, T20S, R37E  
Lea County, NM  
Plains SRS: 2005-00292



Plains Marketing, L.P.  
Lea Station Unit #7 Pump  
SE/NW S28, T20S, R37E  
Lea County, NM  
Plains SRS: 2005-00292



Plains Marketing, L.P.  
Lea Station Unit #7 Pump  
SE/NW S28, T20S, R37E  
Lea County, NM  
Plains SRS: 2005-00292



District I  
1625 N. French Dr., Hobbs, NM 88240  
District II  
1301 W. Grand Avenue, Artesia, NM 88210  
District III  
1000 Rio Brazos Road, Aztec, NM 87410  
District IV  
1220 S. St. Francis Dr., Santa Fe, NM 87505

State of New Mexico  
Energy Minerals and Natural Resources

Form C-141  
Revised October 10, 2003

Oil Conservation Division  
1220 South St. Francis Dr.  
Santa Fe, NM 87505

Submit 2 Copies to appropriate  
District Office in accordance  
with Rule 116 on back  
side of form

**Release Notification and Corrective Action**

**OPERATOR**

☒ Initial Report ☐ Final Report

Name of Company Plains Pipeline, LP	Contact Camille Reynolds	
Address 3112 W. US Hwy 82, Lovington, NM 88260	Telephone No. 505-441-0965	
Facility Name Lea Station Unit #7 Pump	Facility Type Pipeline pump	
Surface Owner Plains	Mineral Owner	Lease No.

**LOCATION OF RELEASE**

Unit Letter F	Section 28	Township 20S	Range 37E	Feet from the	North/South Line	Feet from the	East/West Line	County Lea
------------------	---------------	-----------------	--------------	---------------	------------------	---------------	----------------	---------------

Latitude 32° 32' 47.7" Longitude 103° 15' 30.2"

**NATURE OF RELEASE**

Type of Release Sour Crude Oil	Volume of Release 95 barrels	Volume Recovered 81 barrels
Source of Release Pump	Date and Hour of Occurrence 12-08-05 @6:45	Date and Hour of Discovery 12-08-05@ 7:00
Was Immediate Notice Given? <input checked="" type="checkbox"/> Yes <input type="checkbox"/> No <input type="checkbox"/> Not Required	If YES, To Whom? Larry Johnson	
By Whom? Camille Reynolds	Date and Hour 12-08-05@13:45	
Was a Watercourse Reached? <input type="checkbox"/> Yes <input checked="" type="checkbox"/> No	If YES, Volume Impacting the Watercourse.	

If a Watercourse was Impacted, Describe Fully.\*

Describe Cause of Problem and Remedial Action Taken.\* Mechanical seal failure on pump caused release of sour crude oil. The unit was shutdown and the seal was replaced. The gravity of the crude oil is 37 with an H<sub>2</sub>S content of less than 10 parts per million. The unit pumps approximately 8,000 barrels of oil per day.

Describe Area Affected and Cleanup Action Taken.\* The impacted soil was excavated and stockpiled on plastic. The aerial extent of surface impact was approximately 9,375 square feet.

I hereby certify that the information given above is true and complete to the best of my knowledge and understand that pursuant to NMOC rules and regulations all operators are required to report and/or file certain release notifications and perform corrective actions for releases which may endanger public health or the environment. The acceptance of a C-141 report by the NMOC marked as "Final Report" does not relieve the operator of liability should their operations have failed to adequately investigate and remediate contamination that pose a threat to ground water, surface water, human health or the environment. In addition, NMOC acceptance of a C-141 report does not relieve the operator of responsibility for compliance with any other federal, state, or local laws and/or regulations.

Signature: <i>Camille Reynolds</i>	<b>OIL CONSERVATION DIVISION</b>	
Printed Name: Camille Reynolds	Approved by District Supervisor:	
Title: Remediation Coordinator	Approval Date:	Expiration Date:
E-mail Address: cgreynolds@paalp.com	Conditions of Approval:	Attached <input type="checkbox"/>
Date: 12-09-05	Phone: 505-441-0965	

\* Attach Additional Sheets If Necessary