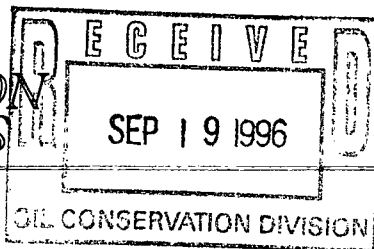


NSL

10/9/96

**BURLINGTON
RESOURCES**

SAN JUAN DIVISION



September 19, 1996

Sent Federal Express

Mr. William LeMay
New Mexico Oil Conservation Division
2040 South Pacheco
Santa Fe, New Mexico 87505

Re: San Juan 28-6 Unit #153M
1200 ENL, 1385 FWL Section 25, T-28-N, R-6-W, Rio Arriba County, New Mexico
API # 30-039-(not yet assigned)

Dear Mr. LeMay:

Burlington Resources is applying for administrative approval of a non-standard location for the above location in both the Mesa Verde and Dakota formations. This application for the referenced location is due to terrain, the presence of archaeology, and at the request of the Bureau of Land Management.

The following attachments are for your review:

1. Application for Permit to Drill.
2. Completed C-102 at referenced location.
3. Offset operators/owners plat - Burlington Resources is the operator of the surrounding proration unit
4. 7.5 minute topographic map showing the orthodox windows, and enlargement of the map to define topographic features.

We appreciate your earliest consideration of this application.

Sincerely,

Peggy Bradfield
Regulatory/Compliance Administrator

encs.

UNITED STATES
DEPARTMENT OF THE INTERIOR
BUREAU OF LAND MANAGEMENT

APPLICATION FOR PERMIT TO DRILL, DEEPEN, OR PLUG BACK

1a. Type of Work DRILL	5. Lease Number NM-013657 Unit Reporting Number	
1b. Type of Well GAS	6. If Indian, All. or Tribe	
2. Operator Meridian Oil Inc.	7. Unit Agreement Name San Juan 28-6 Unit	
3. Address & Phone No. of Operator PO Box 4289, Farmington, NM 87499 (505) 326-9700	8. Farm or Lease Name San Juan 28-6 Unit 9. Well Number 153M	
4. Location of Well 1200' FNL, 1385' FWL Latitude 36° 38.2, Longitude 107° 25.3	10. Field, Pool, Wildcat Blanco MV/Basin Dk 11. Sec., Twn, Rge, Mer. (NMPM) Sec 25, T-28-N, R-6-W API # 30-039-	
14. Distance in Miles from Nearest Town 3.5 miles to Gobernador	12. County Rio Arriba	13. State NM
15. Distance from Proposed Location to Nearest Property or Lease Line 1200'		
16. Acres in Lease	17. Acres Assigned to Well W/2 320	
18. Distance from Proposed Location to Nearest Well, Drig, Compl, or Applied for on this Lease 2000'		
19. Proposed Depth 7917'	20. Rotary or Cable Tools Rotary	
21. Elevations (DF, FT, GR, Etc.) 6650' GR	22. Approx. Date Work will Start	
23. Proposed Casing and Cementing Program See Operations Plan attached		
24. Authorized by: <u><i>Regina Branfield</i></u> Regulatory/Compliance Administrator		<u>9-3-96</u> Date

PERMIT NO. _____ APPROVAL DATE _____

APPROVED BY _____ TITLE _____ DATE _____

Archaeological Report submitted by Arboles Contract Archaeology Technical Report #911 dated August 14, 1996
Threatened and Endangered Species Report submitted by Ecosphere August 1996
NOTE: This format is issued in lieu of U.S. BLM Form 3160-3

District I
PO Box 1980, Hobbs, NM 88241-1980
District II
PO Drawer DD, Artesia, NM 88211-0719
District III
1008 Kilo Brazos Rd., Aztec, NM 87410
District IV
PO Box 2088, Santa Fe, NM 87504-2088

State of New Mexico
Energy, Minerals & Natural Resources Department

OIL CONSERVATION DIVISION
PO Box 2088
Santa Fe, NM 87504-2088

Form C-1
Revised February 21, 1990
Instructions on back
Submit to Appropriate District Office
State Lease - 4 Copies
Fee Lease - 3 Copies

☐ AMENDED REPORT

WELL LOCATION AND ACREAGE DEDICATION PLAT

API Number 30-039-	Pool Code 72319/71593	Pool Name Blanco Mesaverde/Basin Dakota
Property Code 7462	Property Name San Juan 28-6 Unit	Well Number 153M
OGRID No. 14538	Operator Name MERIDIAN OIL INC.	Elevation 6646'

10 Surface Location

UL or lot no.	Section	Township	Range	Lot Ids	Feet from the	North/South line	Feet from the	East/West line	County
C	25	28 N	6 W		1200	North	1385	West	R.A.

11 Bottom Hole Location If Different From Surface

UL or lot no.	Section	Township	Range	Lot Ids	Feet from the	North/South line	Feet from the	East/West line	County

Dedicated Acres 4/320	Joint or Infill 4/320	Consolidation Code	Order No.
--------------------------	--------------------------	--------------------	-----------

NO ALLOWABLE WILL BE ASSIGNED TO THIS COMPLETION UNTIL ALL INTERESTS HAVE BEEN CONSOLIDATED
OR A NON-STANDARD UNIT HAS BEEN APPROVED BY THE DIVISION

16	5278.68'	17 OPERATOR CERTIFICATE
1385'	1200'	I hereby certify that the information contained herein is true and complete to the best of my knowledge and belief.
NM NM-013657	25	Signature Peggy Bradfield
5280.00'	5280.00'	Printed Name Regulatory Administrator
		Title 9-3-96
		Date
		18 SURVEYOR CERTIFICATE
		I hereby certify that the well location shown on this plat was plotted from field notes of actual surveys made by or under my supervision, and that the same is true and correct to the best of my belief.
		7-25-96
		Date of Survey
		Signature of Surveyor
		8857
		8857
		Certificate Number

OPERATIONS PLAN

Well Name: San Juan 28-6 Unit #153M
Location: 1200' FNL, 1385' FWL, Sec 25, T-28-N, R-6-W
 Rio Arriba County, NM
 Latitude 36° 38.2, Longitude 107° 25.3
Formation: Blanco Mesa Verde/Basin Dakota
Elevation: 6650' GL

<u>Formation Tops:</u>	<u>Top</u>	<u>Bottom</u>	<u>Contents</u>
Surface	San Jose	2715'	
Ojo Alamo	2715'	2873'	aquifer
Kirtland	2873'	3166'	
Fruitland	3166'	3462'	gas
Pictured Cliffs	3462'	3674'	gas
Lewis	3674'	4083'	gas
Intermediate TD	3724'		
Chacra	4083'	5025'	gas
Upper Cliff House	5025'	5134'	gas
Massive Cliff House	5134'	5289'	gas
Menefee	5289'	5650'	gas
Massive Point Lookout	5650'	5812'	gas
Lower Point Lookout	5812'	6158'	gas
Mancos	6158'	6657'	gas
Gallup	6657'	7592'	gas
Greenhorn	7592'	7651'	gas
Graneros	7651'	7797'	gas
Dakota	7797'	7922'	gas
Encinal	7922'		gas
TD (5 1/2" liner)	7917'		

Logging Program:Mud Program:

<u>Interval</u>	<u>Type</u>	<u>Weight</u>	<u>Vis.</u>	<u>Fluid Loss</u>
0- 200'	Spud	8.4-8.9	40-50	no control
200-3724'	LSND	8.4-9.0	30-60	no control
3724-7917'	Gas	n/a	n/a	n/a

Pit levels will be visually monitored to detect gain or loss of fluid control.

Casing Program:

<u>Hole Size</u>	<u>Depth Interval</u>	<u>Csg. Size</u>	<u>Wt.</u>	<u>Grade</u>
15 "	0' - 200'	10 3/4"	40.5#	K-55
9 7/8"	0' - 3724'	7 5/8"	26.4#	K-55
6 3/4"	3574' - 7917'	5 1/2"	17.0#	K-55

Tubing Program:

0' - 7917' 2 3/8" 4.70# EUE

BOP Specifications, Wellhead and Tests:

Surface to Intermediate TD -

11" 2000 psi minimum double gate BOP stack (Reference Figure #1).
After nipple-up prior to drilling out surface casing, rams and casing will be tested to 600 psi for 30 minutes.

Intermediate TD to Total Depth -

11" 2000 psi minimum double gate BOP stack (Reference Figure #1).
After nipple-up prior to drilling out intermediate casing, rams and casing will be tested to 1500 psi for 30 minutes.

Surface to Total Depth -

2" nominal, 2000 psi minimum choke manifold (Reference Figure #3).

Completion Operations -

7 1/16" 2000 psi double gate BOP stack (Reference Figure #2).
After nipple-up prior to completion, pipe rams, casing and liner top will be tested to 2000 psi for 15 minutes.

Wellhead -

10 3/4" x 7 5/8" x 2 3/8" x 3000 psi tree assembly.

General -

- Pipe rams will be actuated once each day and blind rams will be actuated once each trip to test proper functioning.
- An upper kelly cock valve with handle available and drill string valves to fit each drill string will be available on the rig floors at all times.
- BOP pit level drill will be conducted weekly for each drilling crew.
- All BOP tests and drills will be recorded in daily drilling reports.
- Blind and pipe rams will be equipped with extension hand wheels.

Cementing:

10 3/4" surface casing - cement with 311 sx Class "B" cement with 1/4# flocele/sx and 2% calcium chloride (358 cu.ft. of slurry, 200% excess to circulate to surface). WOC 12 hrs. Test casing to 600 psi for 30 minutes.

Saw tooth guide shoe on bottom. Bowspring centralizers will be run in accordance with Onshore Order #2.

7 5/8" intermediate casing -

Lead w/473 sx Class "B" w/3% medisilicate, 10# gilsonite/sx and 1/2# flocele/sx. Tail w/90 sx 50/50 Class "B" Poz w/2% calcium chloride (437 cu.ft. of slurry, 75% excess to circulate to surface.) WOC minimum of 12 hours before drilling out intermediate casing. If cement does not circulate to surface, a CBL will be run during completion operations to determine TOC. Test casing to 1500 psi for 30 minutes.

Cement nose guide shoe on bottom with float collar spaced on top of shoe joint. Bowspring centralizers spaced every other joint off bottom, to the base of the Ojo Alamo at 2873. Two turbolating centralizers at the base of the Ojo Alamo at 2873. Bowspring centralizers spaced every fourth joint from the base of the Ojo Alamo to the base of the surface casing.

5 1/2" Production Liner -

Cement to circulate liner top. Lead with 95 sx 65/35 Class "B", 6% gel, 5# gilsonite/sx and 1/4# flocele/sx. Tail with 335 sx 50/50 Class "B" Poz with 1/4# flocele/sx, 5# gilsonite/sx and 0.3% fluid loss additive (620 cu.ft., 75% excess to circulate liner top). WOC a minimum of 18 hrs prior to completing.

Cement float shoe on bottom with float collar spaced on top of shoe joint. The liner hanger will have a rubber packoff.

- If hole conditions permit, an adequate water spacer will be pumped ahead of each cement job to prevent cement/ mud contamination or cement hydration.
- The pipe will be rotated and/or reciprocated, if hole conditions permit.

Special Drilling Operations (Gas/Mist Drilling):

The following equipment will be operational while gas/mist drilling:

- An anchored blooie line will be utilized to discharge all cuttings and circulating medium to the blow pit a minimum of 100' from the wellhead.
- The blooie line will be equipped with an automatic igniter or pilot light.
- Compressors will be located a minimum of 100' from the wellhead in the opposite direction from the blooie line.
- Engines will have spark arresters or water cooled exhaust.
- Deduster equipment will be utilized.
- The rotating head will be properly lubricated and maintained.
- A float valve will be utilized above the bit.
- Mud circulating equipment, water, and mud materials will be sufficient to maintain control of the well.

Additional Information:

- The Dakota and Mesa Verde formations will be completed and commingled.
- No abnormal temperatures or hazards are anticipated.
- Anticipated pore pressures are as follows:

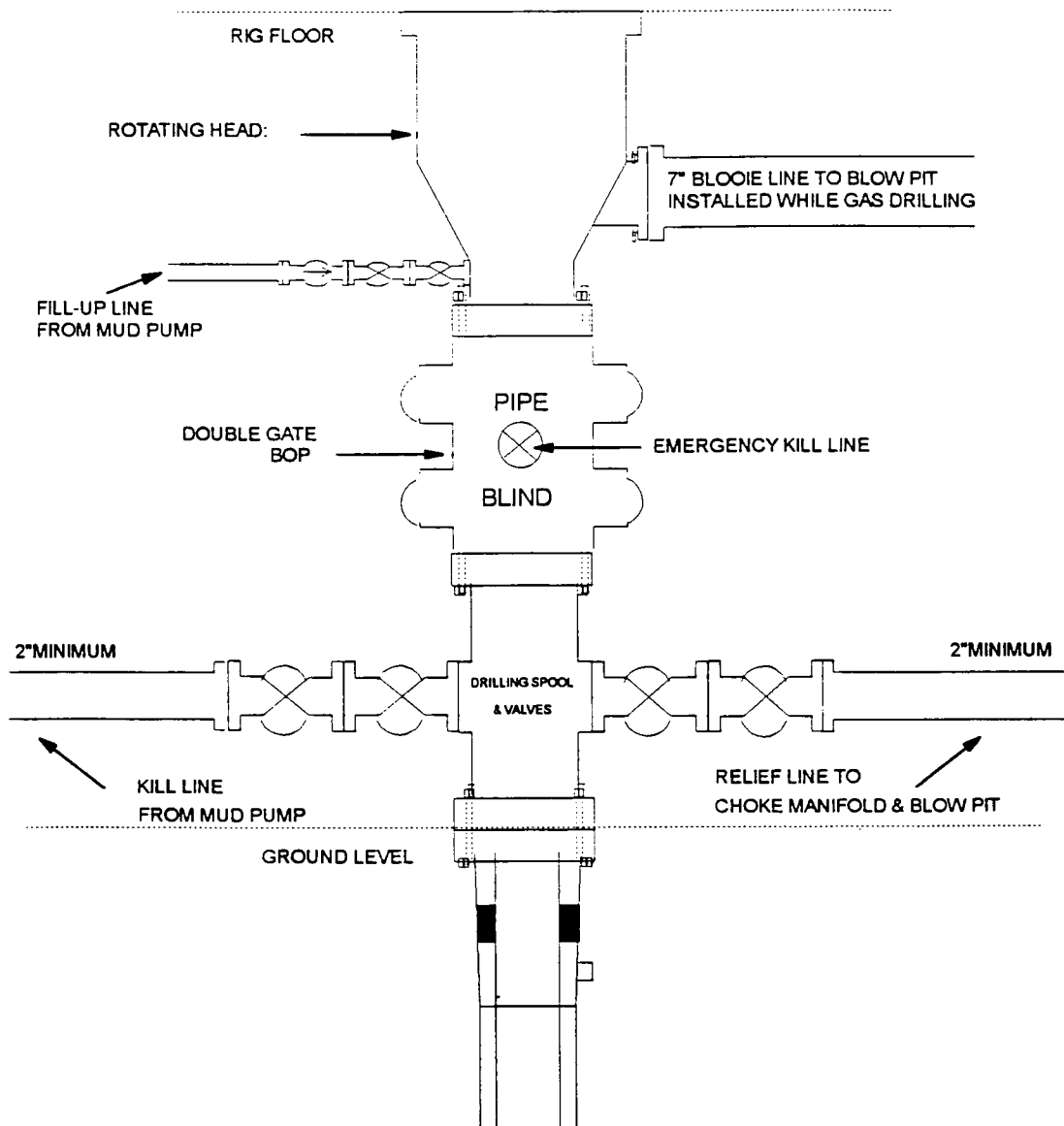
Fruitland Coal	800 psi
Pictured Cliffs	800 psi
Mesa Verde	700 psi
Dakota	2600 psi
- Sufficient LCM will be added to the mud system to maintain well control, if lost circulation is encountered below the top of the Pictured Cliffs.
- The west half of Section 25 is dedicated to both the Mesa Verde and Dakota in this well.
- This gas is dedicated.


Drilling Engineer

9-10-96
Date

BURLINGTON RESOURCES

BOP Configuration 2M psi System

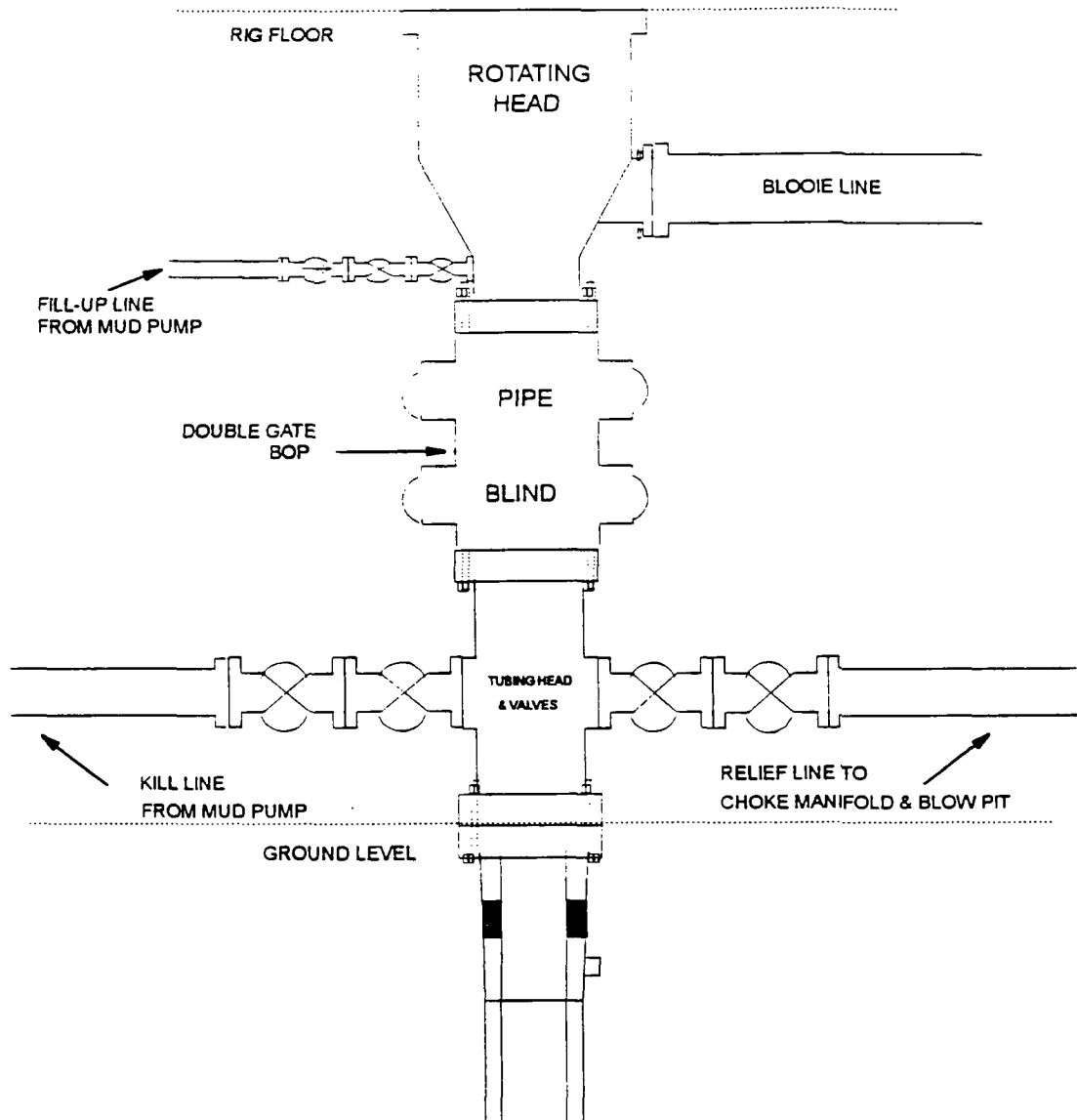


11" Bore, 2000psi minimum working pressure double gate BOP to be equipped with blind and pipe rams. A Schaffer Type 50 or equivalent rotating head to be installed on the top of the BOP. All equipment is 2000psi working pressure/or greater.

FIGURE #1

MERIDIAN OIL INC

BOP Configuration 2M psi System

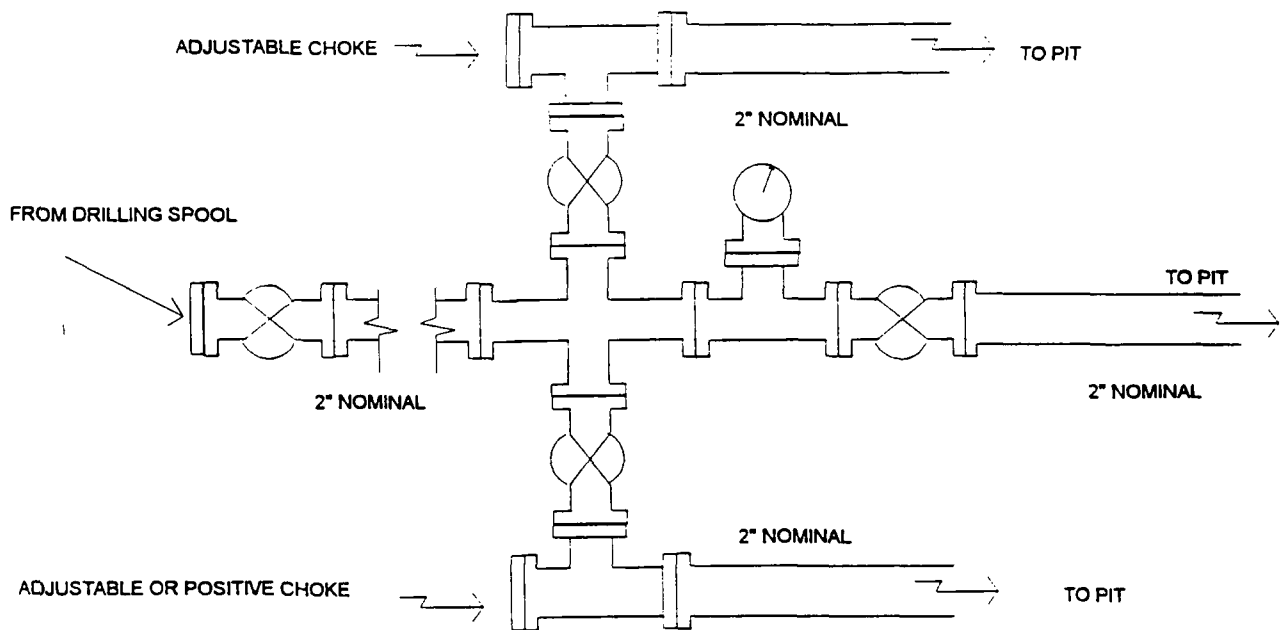


Minimum BOP installation for Completion operations. 7 1/16" Bore (6" Nominal), 3000 psi minimum working pressure double gate BOP to be equipped with blind and pipe rams.

FIGURE #2

MERIDIAN OIL INC.

Choke Manifold Configuration 2M System



Minimum choke manifold installation from surface to Total Depth.
2" minimum, 2000psi working pressure equipment with two chokes.

Figure #3

BURLINGTON RESOURCES

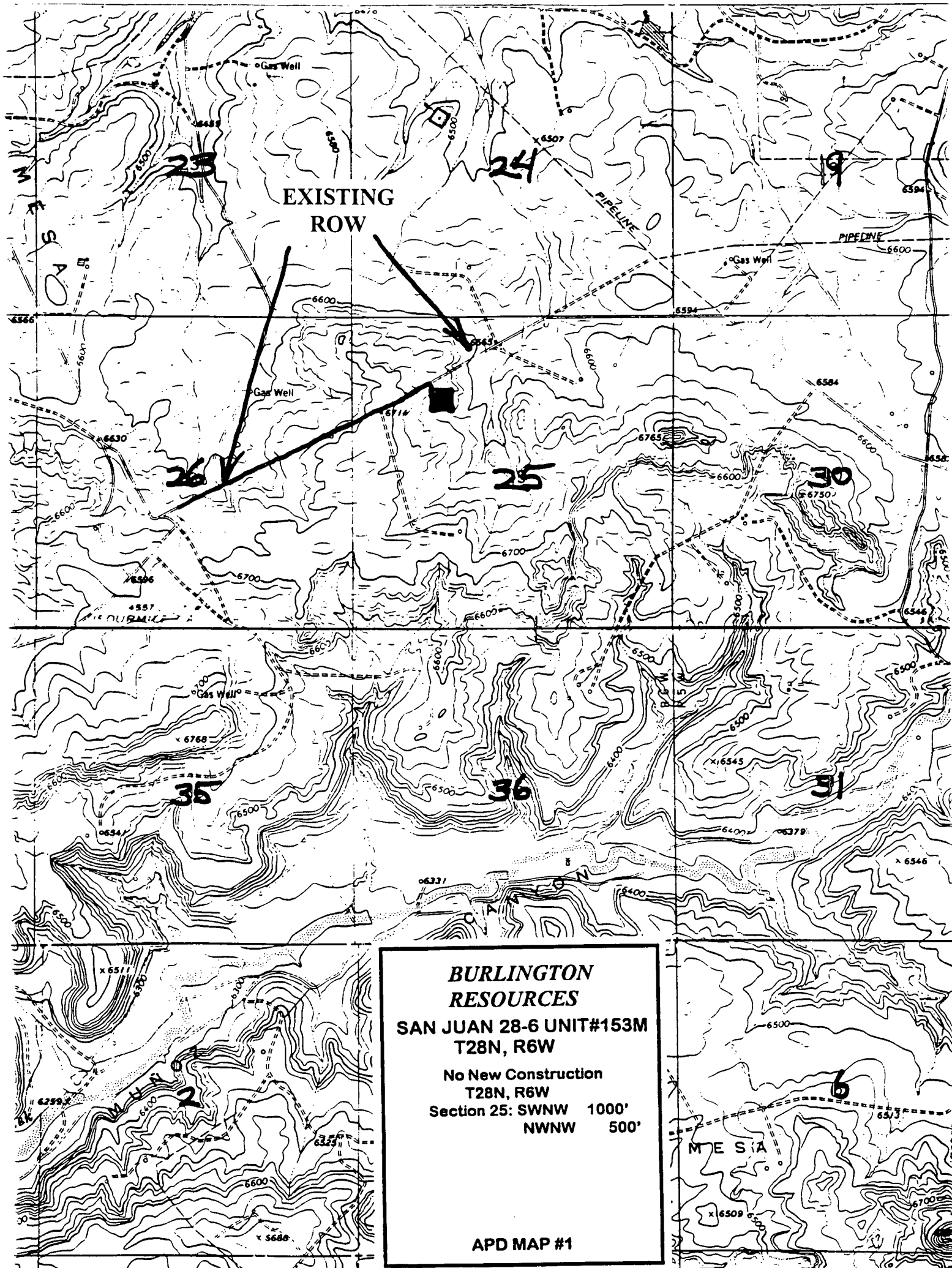
San Juan 28-6 Unit #153M
Multi-Point Surface Use Plan

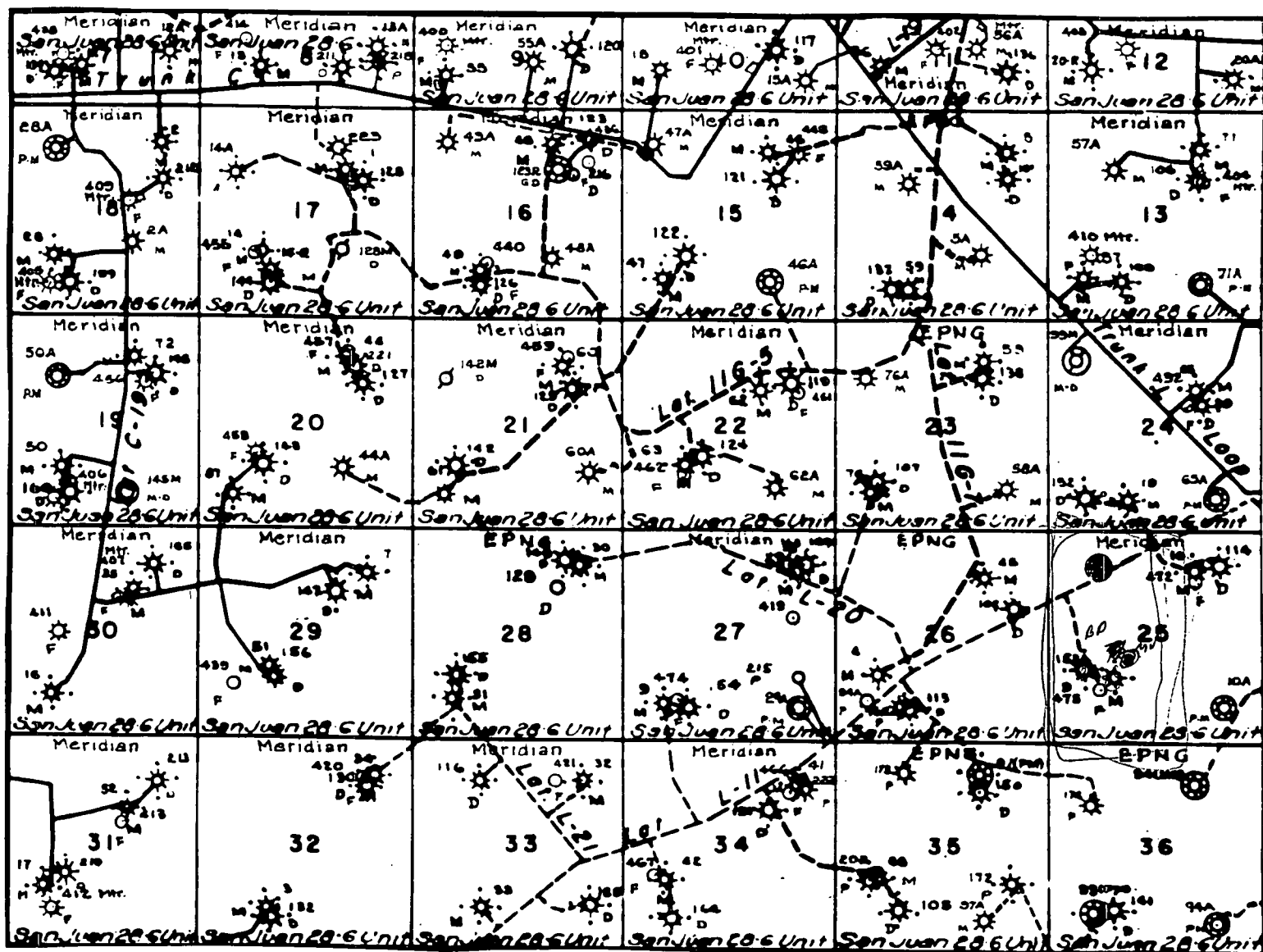
1. Existing Roads - Refer to Map No. 1. Existing roads used to access the proposed location will be properly maintained for the duration of the project. Bureau of Land Management right-of-way has been applied for as shown on Map No. 1.
2. Planned Access Road - Refer to Map No. 1. None required.
3. Location of Existing Wells - Refer to Map No. 1A.
4. Location of Existing and/or Proposed Facilities if Well is Productive -
 - a. On the Well Pad - Refer to Plat No. 1, anticipated production facilities plat.
 - b. Off the Well Pad - Anticipated facilities off the well pad will be applied for as required.
5. Location and Type of Water Supply - Water will be hauled by truck for the proposed project and will be obtained from San Juan 28-6 Water Well located SW/4 Section 23, T-28-N, R-6-W, New Mexico
6. Source of Construction Materials - If construction materials are required for the proposed project, such materials will be obtained from a commercial quarry.
7. Methods of Handling Waste Materials - All garbage and trash materials will be removed from the site for proper disposal. A portable toilet will be provided for human waste and serviced in a proper manner. If liquids are left in the reserve pit after completion of the project, the pit will be fenced until the liquids have had adequate time to dry. The location clean-up will not take place until such time as the reserve pit can be properly covered over to prevent run-off from carrying waste materials into the watershed. Reserve pits will be lined as needed with either 12 mil bio-degradable plastic liner or a bentonite liner. All earthen pits will be so constructed as to prevent leakage from occurring; no earthen pit will be located on natural drainage. Generation of hazardous waste is not anticipated. Federal regulations will be adhered to regarding handling and disposal of such waste if so generated.
8. Ancillary Facilities - None anticipated.
9. Wellsite Layout - Refer to the location diagram and to the wellsite cut and fill diagram (Figure No. 4). The blow pit will be constructed with a 2'/160' grade to allow positive drainage to the reserve pit and prevent standing liquids in the blow pit.

10. Plans for Restoration of the Surface - After completion of the proposed project, the location will be cleaned and leveled. The location will be left in such a condition that will enable reseeded operations to be carried out. Seed mixture as designated by the responsible government agency will be used. The reseeded operations will be performed during the time period set forth by the responsible government agency. The permanent location facilities will be painted as designated by the responsible government agency.
11. Surface Ownership - Bureau of Land Management
12. Other Information - Environmental stipulations as outlined by the responsible government agency will be adhered to. Refer to the archaeological report for a description of the topography, flora, fauna, soil characteristics, dwellings, historical and cultural sites.
13. Operator's Representative and Certification - Burlington Resources Oil & Gas Company Regional Drilling Manager, Post Office Box 4289, Farmington, NM 87499, telephone (505) 326-9700. I hereby certify that I, or persons under my direct supervision, have inspected the proposed drill site and access route; that I am familiar with the conditions which presently exist; that the statements made in this plan, are to the best of my knowledge, true and correct; and that the work associated with the operations proposed herein will be performed by Burlington Resources Oil and Gas Company and its contractors and subcontractors in conformity with this plan and the terms and conditions under which it is approved.


Regulatory/Compliance Administrator 9/3/96
Date

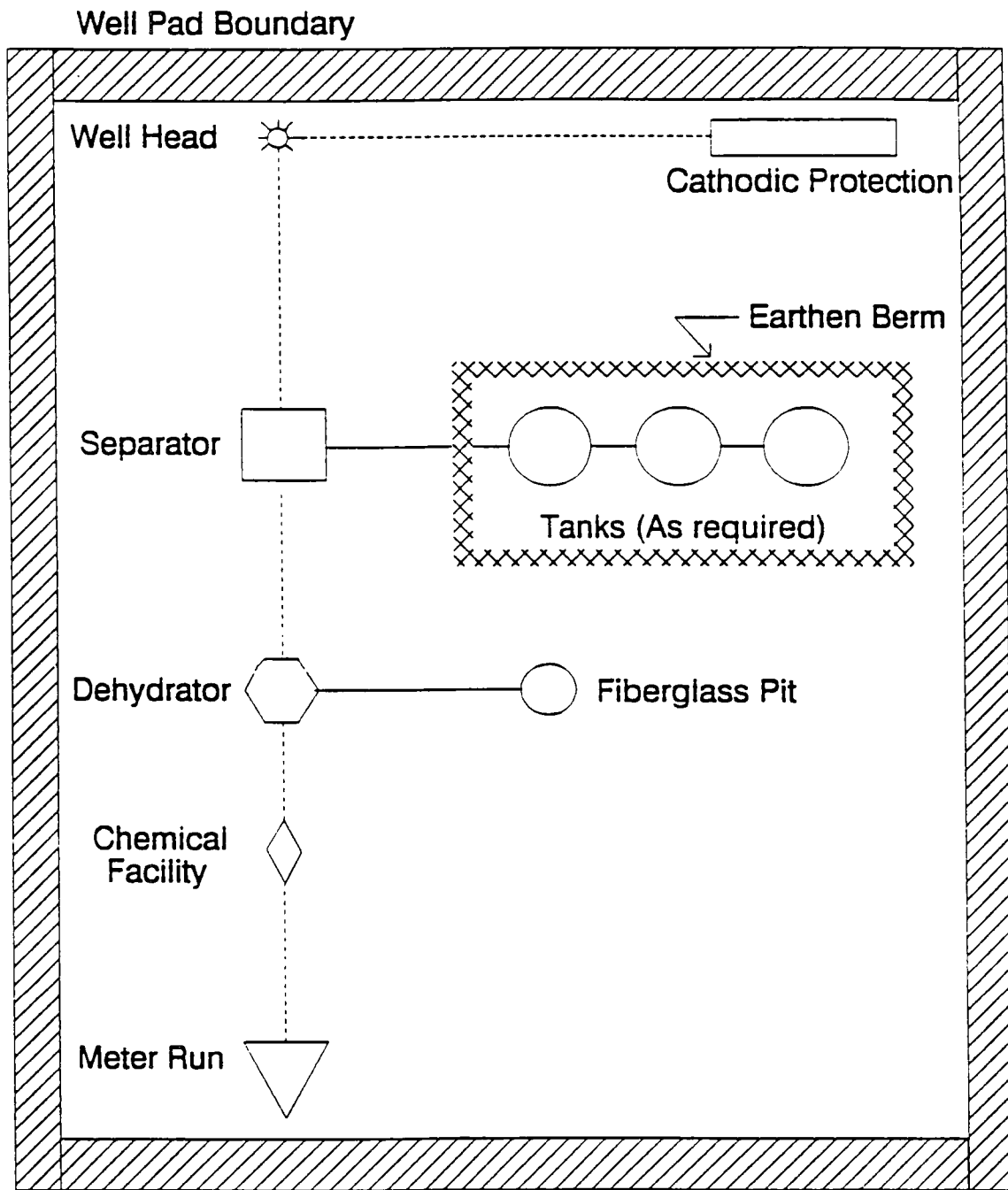
pb





MERIDIAN OIL INC.
 Pipeline Map
 T-28-N, R-06-W
 San Juan County, New Mexico
 SAN JUAN 28-6 UNIT 153M
 MAP #1A

3/91 adw/mjb



PLAT #1

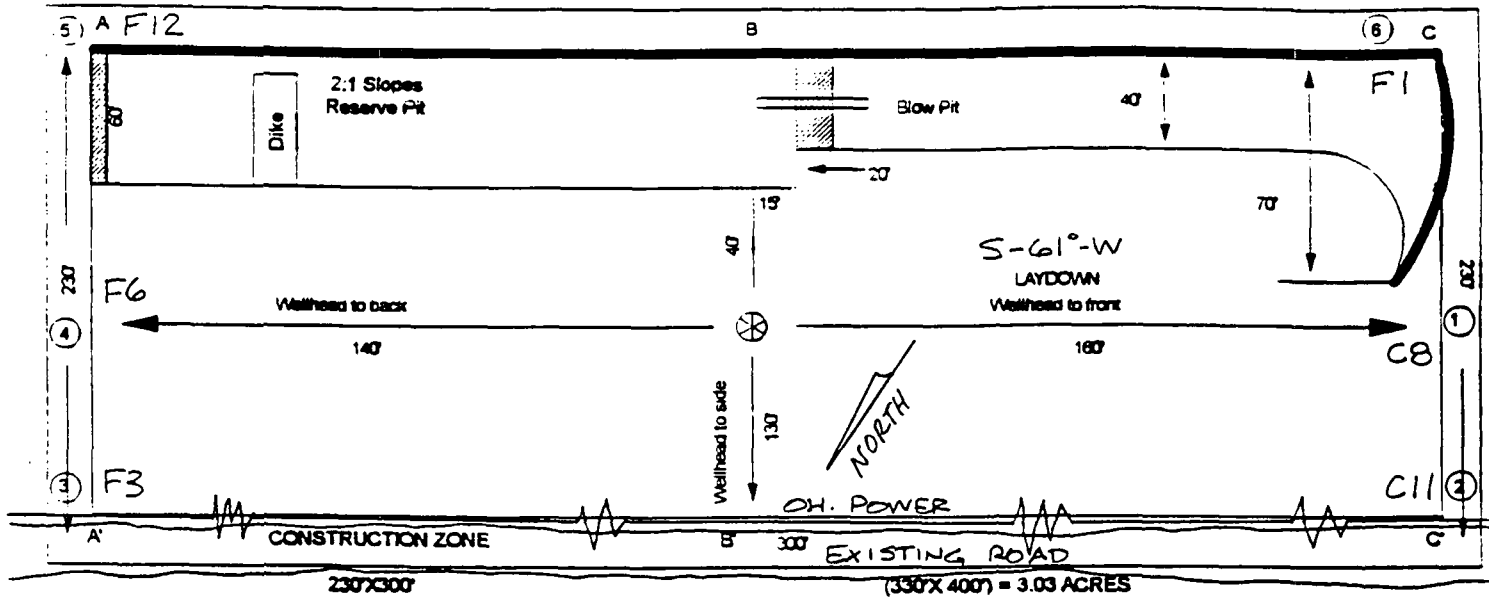
MERIDIAN OIL
ANTICIPATED
PRODUCTION FACILITIES
FOR A
DAKOTA WELL

MERIDIAN OIL

PLAT #1

PC/FC LOW POTENTIAL

NAME: SAN JUAN 28-6 UNIT #153M
 FOOTAGE: 1200 FNL 1385 FWL
 SEC 25 TWN 28 N.R. 6 W NMPM
 CO: RIO ARriba ST: NEW MEXICO
 ELEVATION: 6646 DATE: 7/25/96

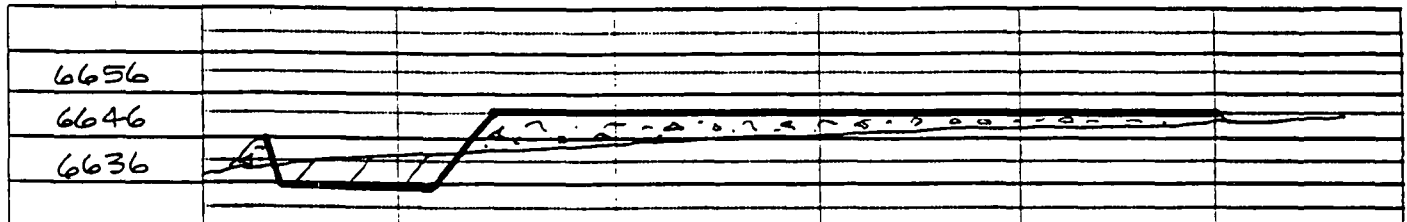


Reserve Pit Dike : to be 6" above Deep side; (overflow - 3' wide and 1' above shallow side.)

Blow Pit : overflow pipe halfway between top and bottom and extend over plastic liner and into blow pit.

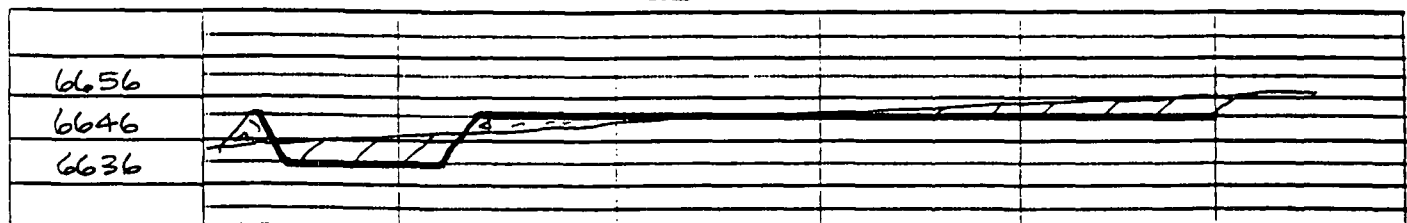
A-A'

C/L



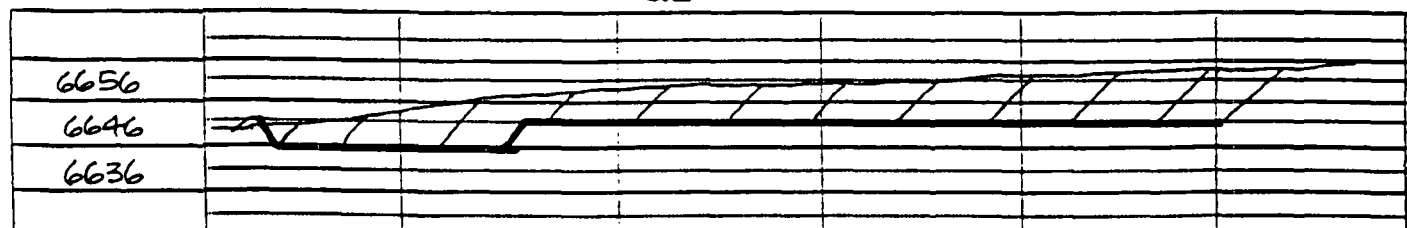
B-B'

C/L



C-C'

C/L



Note: Contractor should call One-Call for location of any marked or unmarked buried pipelines or cables on well pad and/or access road at least 2 working days prior to construction.

BURLINGTON RESOURCES OIL AND GAS COMPANY

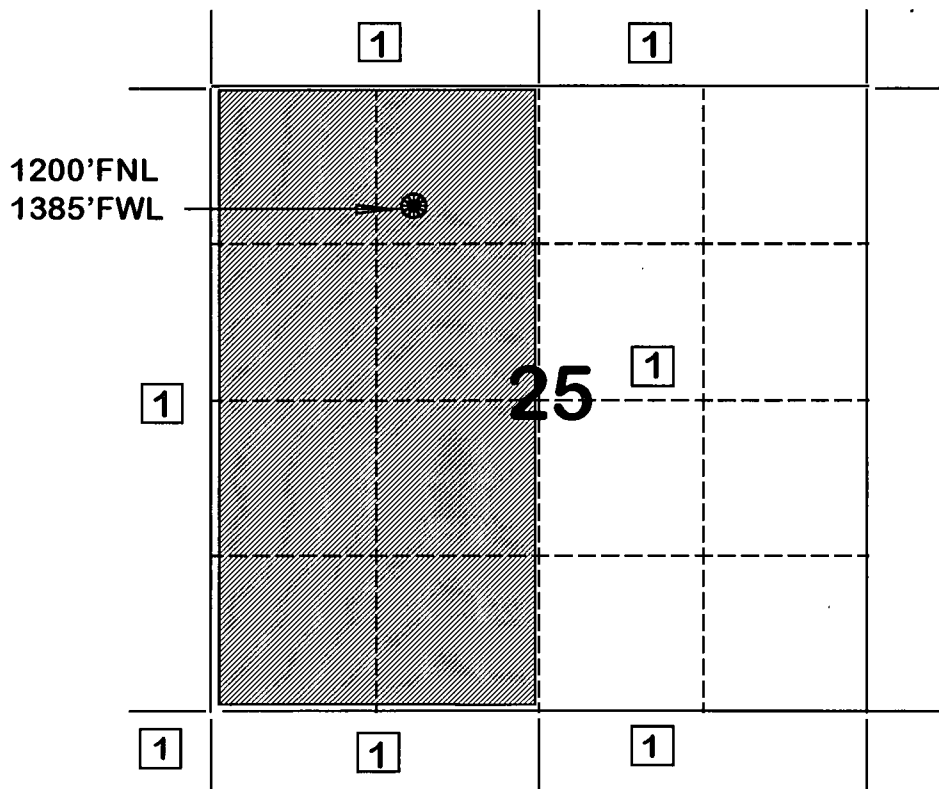
SAN JUAN 28-6 UNIT#153M

OFFSET OPERATOR \ OWNER PLAT

NON STANDARD LOCATION

Mesaverde / Dakota Formation Well

Township 28 North, Range 6 West



1) Burlington Resources Oil and Gas Company Successor to Meridian Oil Inc.

