

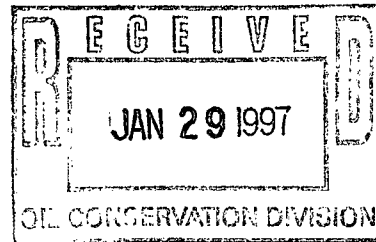
**BURLINGTON
RESOURCES**

SAN JUAN DIVISION

January 28, 1997

Sent Federal Express

Mr. William LeMay
New Mexico Oil Conservation Division
2040 South Pacheco
Santa Fe, New Mexico 87505



Re: San Juan 28-5 Unit #73M
765'FSL, 2075'FEL Section 35, T-28-N, R-5-W, Rio Arriba County, New Mexico
API # 30-039-(not yet assigned)

Dear Mr. LeMay:

Burlington Resources is applying for administrative approval of a non-standard location for the above location in both the Mesa Verde and Dakota formations. This application for the referenced location is due to the presence of pipelines, terrain, and at the request of the Bureau of Land Management.

The following attachments are for your review:

1. Application for Permit to Drill.
2. Completed C-102 at referenced location.
3. Offset operators/owners plat - Burlington is the offset operator
4. 7.5 minute topographic map showing the orthodox windows, and enlargement of the map to define topographic features.

We appreciate your earliest consideration of this application.


Sincerely,

Peggy Bradfield

Regulatory/Compliance Representative

UNITED STATES
DEPARTMENT OF THE INTERIOR
BUREAU OF LAND MANAGEMENT

APPLICATION FOR PERMIT TO DRILL, DEEPEN, OR PLUG BACK

1a. Type of Work DRILL	5. Lease Number SF-079522 Unit Reporting Number 8910000949A-Dk 89100009490-MV
1b. Type of Well GAS	6. If Indian, All. or Tribe
2. Operator <i>BURLINGTON RESOURCES</i> Oil & Gas Company	7. Unit Agreement Name San Juan 28-5 Unit
3. Address & Phone No. of Operator PO Box 4289, Farmington, NM 87499 (505) 326-9700	8. Farm or Lease Name San Juan 28-5 Unit 9. Well Number 73M
4. Location of Well 765' FSL, 2075' FEL Latitude 36° 36' 43", Longitude 107° 19' 34"	10. Field, Pool, Wildcat Blanco Mesa Verde/ Basin Dakota 11. Sec., Twn, Rge, Mer. (NMPM) Sec 35, T-28N, R-5-W API # 30-039-
14. Distance in Miles from Nearest Town 8 miles to Gobernador	12. County 13. State Rio Arriba NM
15. Distance from Proposed Location to Nearest Property or Lease Line 765'	
16. Acres in Lease	17. Acres Assigned to Well 330.92 Dk/361.36 MV
18. Distance from Proposed Location to Nearest Well, Drlg, Compl, or Applied for on this Lease 1200'	
19. Proposed Depth 8013'	20. Rotary or Cable Tools Rotary
21. Elevations (DF, FT, GR, Etc.) 6736' GR	22. Approx. Date Work will Start
23. Proposed Casing and Cementing Program See Operations Plan attached	
24. Authorized by:  Regulatory/Compliance Administrator	1-21-97 Date

PERMIT NO. _____ APPROVAL DATE _____

APPROVED BY _____ TITLE _____ DATE _____

Archaeological Report to be submitted
Threatened and Endangered Species Report to be submitted
NOTE: This format is issued in lieu of U.S. BLM Form 3160-3

District I
PO Box 1988, Hobbs, NM 88241-1988
District II
PO Drawer 00, Artesia, NM 88211-0719
District III
1000 Rio Brason Rd., Aztec, NM 87410
District IV
PO Box 2088, Santa Fe, NM 87504-2088

State of New Mexico
Energy, Minerals & Natural Resources Department

OIL CONSERVATION DIVISION
PO Box 2088
Santa Fe, NM 87504-2088

Form C-1
Revised February 21, 1990
Instructions on back
Submit to Appropriate District Office
State Lease - 4 Copies
Fee Lease - 3 Copies

☐ AMENDED REPORT

WELL LOCATION AND ACREAGE DEDICATION PLAT

API Number 30-039-		Post Code 72319/71599	Post Name Blanco Mesaverde/Basin Dakota
Property Code 7460	Property Name San Juan 28-5 Unit		Well Number 73M
OGRID No. 14538	Operator Name BURLINGTON RESOURCES OIL & GAS COMPANY		Elevation 6736'

10 Surface Location

UL or lot no.	Section	Township	Range	Lot Ids	Feet from the	North/South line	Feet from the	East/West line	County
0	35	28-N	5-W		765	South	2075	East	R.A.

11 Bottom Hole Location if Different From Surface

UL or lot no.	Section	Township	Range	Lot Ids	Feet from the	North/South line	Feet from the	East/West line	County

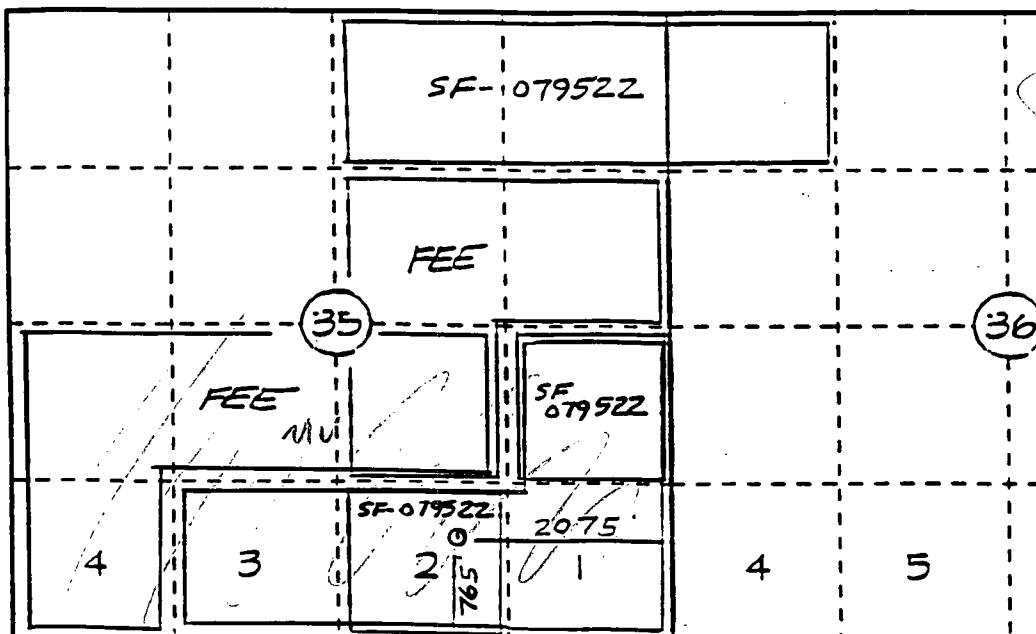
12 Dedication Acres
MV-S/351.86
DK-330.92

13 Joint or Infill

14 Consolidation Code

15 Order No.

NO ALLOWABLE WILL BE ASSIGNED TO THIS COMPLETION UNTIL ALL INTERESTS HAVE BEEN CONSOLIDATED OR A NON-STANDARD UNIT HAS BEEN APPROVED BY THE DIVISION



17 OPERATOR CERTIFICATION

I hereby certify that the information contained herein is true and complete to the best of my knowledge and belief.

Peggy Bradfield
Signature
Peggy Bradfield
Printed Name
Regulatory Administrator
Title
1-21-97
Date

18 SURVEYOR CERTIFICATION

I hereby certify that the well location shown on this plat was plotted from field notes of actual surveys made by or under my supervision, and that the same is true and correct to the best of my belief.

12-20-96

Date of Survey
Signature and Seal of Professional Surveyor
NEALE C. EDWARDS
NEW MEXICO
6857
6857
Certificate Number

2-2948

OPERATIONS PLAN

Well Name: San Juan 28-5 Unit #73M
Location: 765' FSL, 2075' FEL Sec 35, T-28-N, R-5-W
 Rio Arriba County, NM
 Latitude 36° 36' 43", Longitude 107° 19' 34"
Formation: Blanco Mesa Verde/Basin Dakota
Elevation: 6736' GL

<u>Formation Tops:</u>	<u>Top</u>	<u>Bottom</u>	<u>Contents</u>
Surface	San Jose	2988'	
Ojo Alamo	2988'	3238'	aquifer
Fruitland	3238'	3588'	gas
Pictured Cliffs	3588'	3688'	gas
Lewis	3688'	4273'	gas
Intermediate TD	3738'		
Mesa Verde	4273'	4543'	gas
Chacra	4543'	5278'	
Massive Cliff House	5278'	5408'	gas
Menefee	5408'	5733'	gas
Massive Point Lookout	5733'	6923'	gas
Gallup	6923'	7668'	gas
Greenhorn	7668'	7775'	gas
Graneros	7775'	7873'	gas
Dakota	7873'		gas
TD	8013'		

Logging Program:

Cased hole -Gamma Ray/Neutron

Mud Program:

<u>Interval</u>	<u>Type</u>	<u>Weight</u>	<u>Vis.</u>	<u>Fluid Loss</u>
0- 200'	Spud	8.4-9.0	40-50	no control
200-3738'	LSND	8.4-9.0	30-60	no control
3738-8013'	Gas	n/a	n/a	n/a

Pit levels will be visually monitored to detect gain or loss of fluid control.

Casing Program (as listed, the equivalent, or better):

<u>Hole Size</u>	<u>Depth Interval</u>	<u>Csg. Size</u>	<u>Wt.</u>	<u>Grade</u>
12 1/4"	0' - 200'	9 5/8"	32.3#	H-40
8 3/4"	0' - 3738'	7"	20.0#	J-55
6 1/4"	3638' - 6855'	4 1/2"	10.5#	J-55
6 1/4"	6855' - 8013'	4 1/2"	11.6#	J-55

Tubing Program:

0' - 8013' 2 3/8" 4.70# EUE

BOP Specifications, Wellhead and Tests:

Surface to Intermediate TD -

11" 2000 psi minimum double gate BOP stack (Reference Figure #1). After nipple-up prior to drilling out surface casing, rams and casing will be tested to 600 psi for 30 minutes.

Intermediate TD to Total Depth -

11" 2000 psi minimum double gate BOP stack (Reference Figure #1). After nipple-up prior to drilling out intermediate casing, rams and casing will be tested to 1500 psi for 30 minutes.

Surface to Total Depth -

2" nominal, 2000 psi minimum choke manifold (Reference Figure #3).

Completion Operations -

7 1/16" 2000 psi double gate BOP stack (Reference Figure #2). After nipple-up prior to completion, pipe rams, casing and liner top will be tested to 2000 psi for 15 minutes.

Wellhead -

9 5/8" x 7" x 2 3/8" x 3000 psi tree assembly.

General -

- Pipe rams will be actuated once each day and blind rams will be actuated once each trip to test proper functioning.
- An upper kelly cock valve with handle available and drill string valves to fit each drill string will be available on the rig floors at all times.
- BOP pit level drill will be conducted weekly for each drilling crew.
- All BOP tests and drills will be recorded in daily drilling reports.
- Blind and pipe rams will be equipped with extension hand wheels.

Cementing:

9 5/8" surface casing - cement with 163 sx Class "B" cement with 1/4# flocele/sx and 2% calcium chloride (188 cu.ft. of slurry, 200% excess to circulate to surface). WOC 12 hrs. Test casing to 600 psi for 30 minutes.

Saw tooth guide shoe on bottom. Bowspring centralizers will be run in accordance with Onshore Order #2.

7" intermediate casing -

Lead w/353 sx Class "B" w/3% medisilicate, 10# gilsonite/sx and 1/2# flocele/sx. Tail w/90 sx 50/50 Class "B" Poz w/2% calcium chloride (1126 cu.ft. of slurry, 75% excess to circulate to surface.) WOC minimum of 12 hours before drilling out intermediate casing. If cement does not circulate to surface, a CBL will be run during completion operations to determine TOC. Test casing to 1500 psi for 30 minutes.

Cement nose guide shoe on bottom with float collar spaced on top of shoe joint. Bowspring centralizers spaced every other joint off bottom, to the base of the Ojo Alamo at 3238'. Two turbolating centralizers at the base of the Ojo Alamo at 3238'. Bowspring centralizers spaced every fourth joint from the base of the Ojo Alamo to the base of the surface casing.

4 1/2" Production Casing -

Cement to cover minimum of 100' of 4 1/2" x 7" overlap. Lead with 116 sx 65/35 Class "B" poz with 6% gel, 5# gilsonite/sx and 1/4# flocele/sx. Tail with 296 sx 50/50 Class "B" Poz with 1/4# flocele/sx, 5# gilsonite/sx, and 0.3% fluid loss additive (608 cu.ft., 35% excess to cement 4 1/2" x 7" overlap). WOC a minimum of 18 hrs prior to completing.

Cement float shoe on bottom with float collar spaced on top of shoe joint.

Note: To facilitate higher hydraulic stimulation completion work, no liner hanger will be used. In its place, a long string of 4 1/2" casing will be run and cemented with a minimum of 100' of cement overlap between the 4 1/2" x 7" casing strings. After completion of the well, a 4 1/2" retrievable bridge plug will be set below the top of cement in the 4 1/2" x 7" overlap. The 4 1/2" casing will then be backed off above the top of cement in the 4 1/2" x 7" overlap and laid down. The liner top can then be pressure tested to ensure a seal between the liner top and the 7" casing has been achieved. The test pressure shall be the maximum anticipated pressure to which the seal will be exposed (700 psi for the Mesa Verde and 2500 psi for the Dakota). The 4 1/2" bridge plug will then be retrieved and the production tubing will be run to produce the well.

- If hole conditions permit, an adequate water spacer will be pumped ahead of each cement job to prevent cement/ mud contamination or cement hydration.
- The pipe will be rotated and/or reciprocated, if hole conditions permit.

Special Drilling Operations (Gas/Mist Drilling):

The following equipment will be operational while gas/mist drilling:

- An anchored blooie line will be utilized to discharge all cuttings and circulating medium to the blow pit a minimum of 100' from the wellhead.
- The blooie line will be equipped with an automatic igniter or pilot light.
- Compressors will be located a minimum of 100' from the wellhead in the opposite direction from the blooie line.
- Engines will have spark arresters or water cooled exhaust.
- Deduster equipment will be utilized.
- The rotating head will be properly lubricated and maintained.
- A float valve will be utilized above the bit.
- Mud circulating equipment, water, and mud materials will be sufficient to maintain control of the well.

Additional Information:

- The Dakota and Mesa Verde formations will be completed and commingled.
- No abnormal temperatures or hazards are anticipated.
- Anticipated pore pressures are as follows:

Fruitland Coal	800 psi
Pictured Cliffs	800 psi
Mesa Verde	700 psi
Dakota	2500 psi
- Sufficient LCM will be added to the mud system to maintain well control, if lost circulation is encountered.
- The dedication to the Mesa Verde and Dakota in this well is as shown on the C102 plat attached.
- This gas is dedicated.

Henry J. M.
Drilling Engineer

1/21/97
Date

BURLINGTON RESOURCES

San Juan 28-5 Unit #73M
Multi-Point Surface Use Plan

1. Existing Roads - Refer to Map No. 1. Existing roads used to access the proposed location will be properly maintained for the duration of the project. Bureau of Land Management right-of-way has been applied for as shown on Map No. 1.
2. Planned Access Road - Refer to Map No. 1. The required new access road is shown on Map No. 1. The gradient, shoulder, crowning and other design elements will meet or exceed those specified by the responsible government agency. The new access road surface will not exceed twenty feet (20') in width. No additional turnarounds or turnouts will be required. Upon completion of the project, the access road will be adequately drained to control soil erosion. Approximately 600' of access road will be constructed. Pipelines are indicated on Map No. 1A.
3. Location of Existing Wells - Refer to Map No. 1A.
4. Location of Existing and/or Proposed Facilities if Well is Productive -
 - a. On the Well Pad - Refer to Plat No. 1, anticipated production facilities plat.
 - b. Off the Well Pad - Anticipated pipeline facilities as shown on the attached plat from Williams Field Service.
5. Location and Type of Water Supply - Water will be hauled by truck for the proposed project and will be obtained from San Juan 27-5 Water Well #1 located NE/4 Section 3, T-27-N, R-5-W, New Mexico.
6. Source of Construction Materials - If construction materials are required for the proposed project, such materials will be obtained from a commercial quarry.
7. Methods of Handling Waste Materials - All garbage and trash materials will be removed from the site for proper disposal. A portable toilet will be provided for human waste and serviced in a proper manner. If liquids are left in the reserve pit after completion of the project, the pit will be fenced until the liquids have had adequate time to dry. The location clean-up will not take place until such time as the reserve pit can be properly covered over to prevent run-off from carrying waste materials into the watershed. Reserve pits will be lined as needed with either 12 mil bio-degradable plastic liner or a bentonite liner. All earthen pits will be so constructed as to prevent leakage from occurring; no earthen pit will be located on natural drainage. Generation of hazardous waste is not anticipated. Federal regulations will be adhered to regarding handling and disposal of such waste if so generated.
8. Ancillary Facilities - None anticipated.
9. Wellsite Layout - Refer to the location diagram and to the wellsite cut and fill diagram (Figure No. 4). The blow pit will be constructed with a 2'/160' grade to allow positive drainage to the reserve pit and prevent standing liquids in the blow pit.

10. Plans for Restoration of the Surface - After completion of the proposed project, the location will be cleaned and leveled. The location will be left in such a condition that will enable reseeding operations to be carried out. Seed mixture as designated by the responsible government agency will be used. The reseeding operations will be performed during the time period set forth by the responsible government agency. The permanent location facilities will be painted as designated by the responsible government agency.
11. Surface Ownership - Bureau of Land Management
12. Other Information - Environmental stipulations as outlined by the responsible government agency will be adhered to. Refer to the archaeological report for a description of the topography, flora, fauna, soil characteristics, dwellings, historical and cultural sites.
13. Operator's Representative and Certification - Burlington Resources Oil & Gas Company Regional Drilling Manager, Post Office Box 4289, Farmington, NM 87499, telephone (505) 326-9700. I hereby certify that I, or persons under my direct supervision, have inspected the proposed drill site and access route; that I am familiar with the conditions which presently exist; that the statements made in this plan, are to the best of my knowledge, true and correct; and that the work associated with the operations proposed herein will be performed by Burlington Resources Oil and Gas Company and its contractors and subcontractors in conformity with this plan and the terms and conditions under which it is approved.


Regulatory/Compliance Administrator 1-21-97
Date

pb

**BURLINGTON
RESOURCES**
SAN JUAN 28-5 UNIT #73M
T28N, R5W

600' New Construction
T28N, R5W

Section 35: SWSE 600'

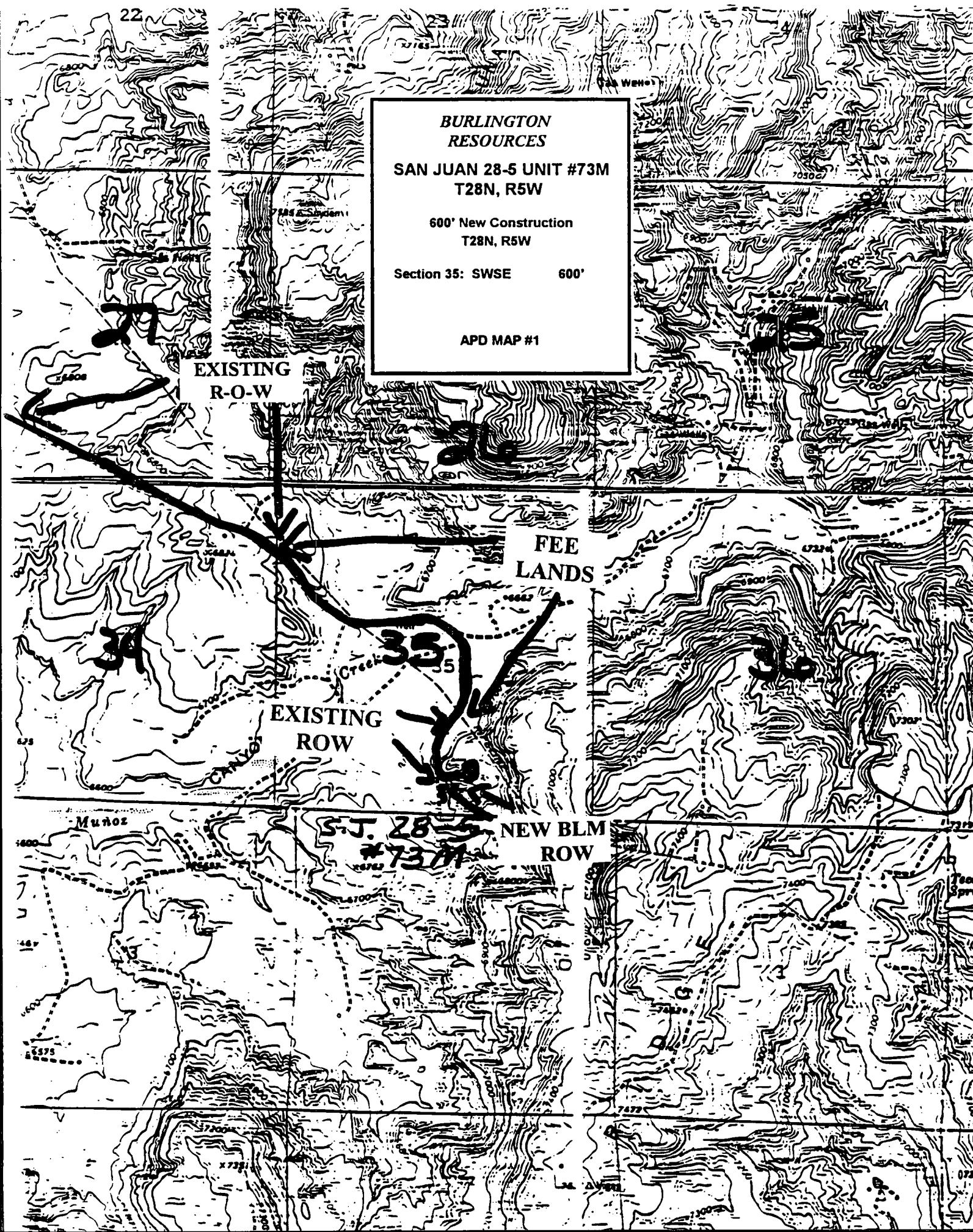
APD MAP #1

**EXISTING
R-O-W**

**FEE
LANDS**

**EXISTING
ROW**

**S.J. 28-5
#73M
NEW BLM
ROW**



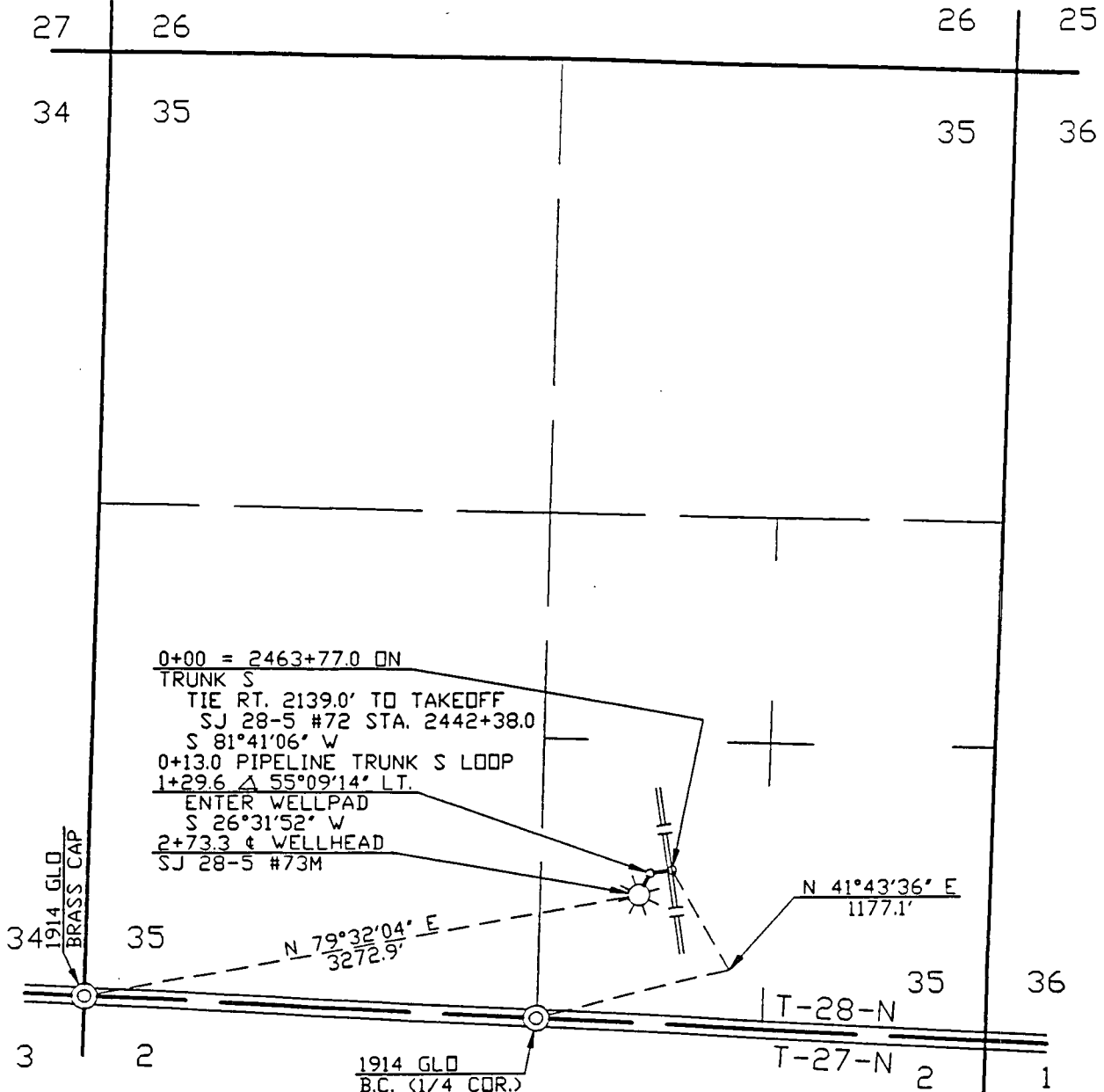
SAN JUAN GATHERING SYSTEM

LINE BURLINGTON RESOURCES - SJ 28-5 #73M
FROM 0+00 = 2463+77.0 ON TRUNK S
(REF. DWG. S765.0-1)
COUNTY RIO ARriba STATE NEW MEXICO
SECTION 35 TOWNSHIP 28-N RANGE 5-W

SCALE 1"=1000'
DRAWN BY PB
CHECKED BY CJF
APPROVED RR
APPROVED Ck

DWG. NO. S765.0-215-1
DATE 12/30/96
SURVEYED 12/23/96
V.I. NO.
R/V NO.

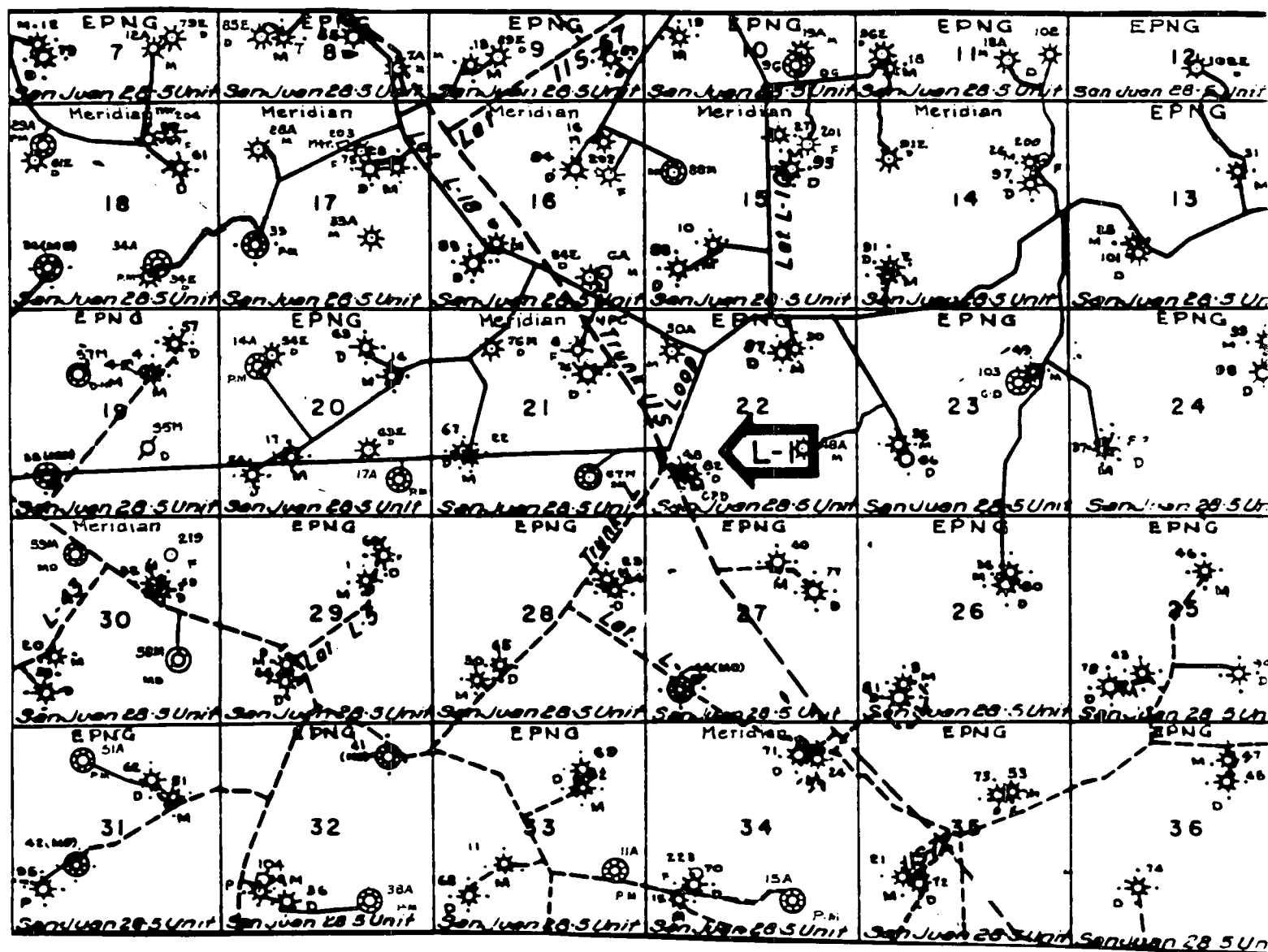
NOTE: BEARINGS ARE BASED ON A GRID BEARING
ALONG THE SOUTH LINE OF THE SW 1/4 OF
SECTION 35, T-28-N, R-5-W, NMPH
BEARS: S 87°01'24" E



APPLICATION DWG. DATE METER NO. FORMATION METER NO. FORMATION

AS-BUILT PIPE DATA

NO.	DATE	BY	REVISION DESCRIPTION	APP.	NO.	DATE	BY	REVISION DESCRIPTION	APP.
1	12/30/96	PB	ISSUED FOR REVIEW	Ck					

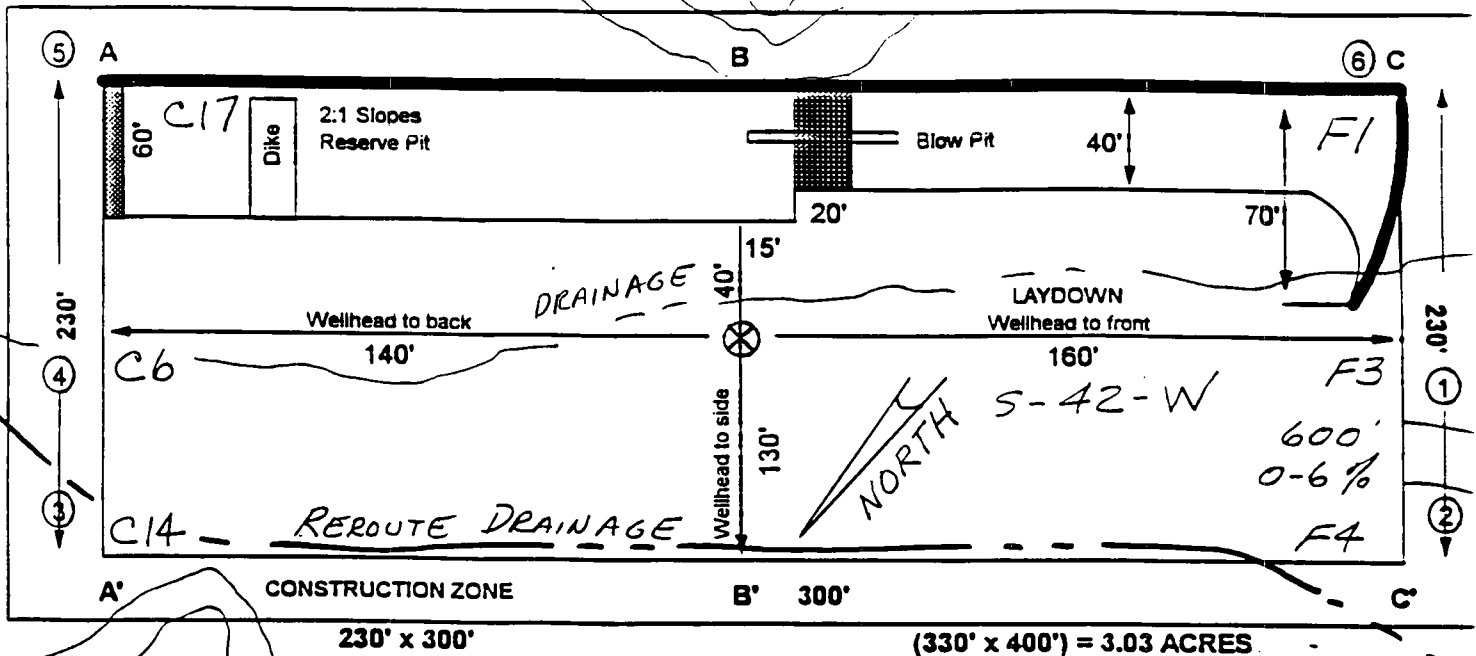


MERIDIAN OIL INC.
 Pipeline Map
 T-28-N, R-05-W
 San Juan County, New Mexico
 San Juan 28-5 Unit #73M
 Map 1A

BURLINGTON RESOURCES

PLAT #1

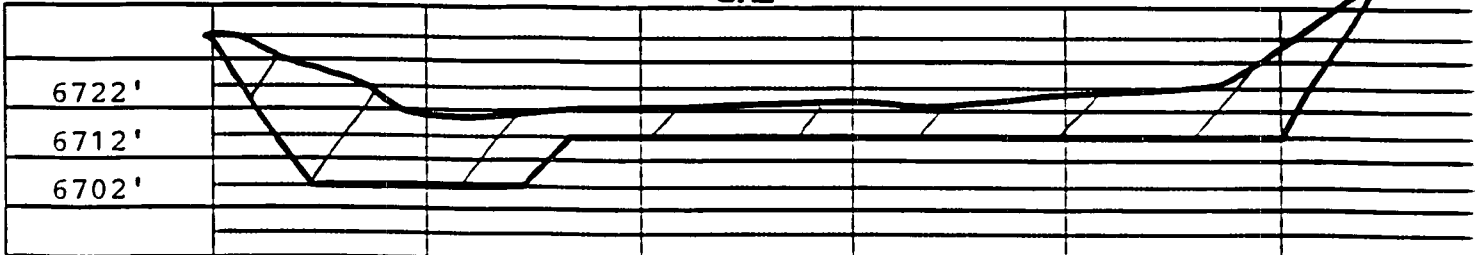
NAME: San Juan 28-5 Unit #73M
 FOOTAGE: 765' FSL, 2075' FEL,
 SEC 35 TWN 28 N.R. 5 W NMPM
 CO: Rio Arriba ST: New Mexico
 ELEVATION: 6712' DATE: 12-20-96



Reserve Pit Dike: to be 6' above Deep side (overflow - 3' wide and 1' above shallow side).
 Blow Pit: overflow pipe halfway between top and bottom and to extend over plastic liner and into blow pit.

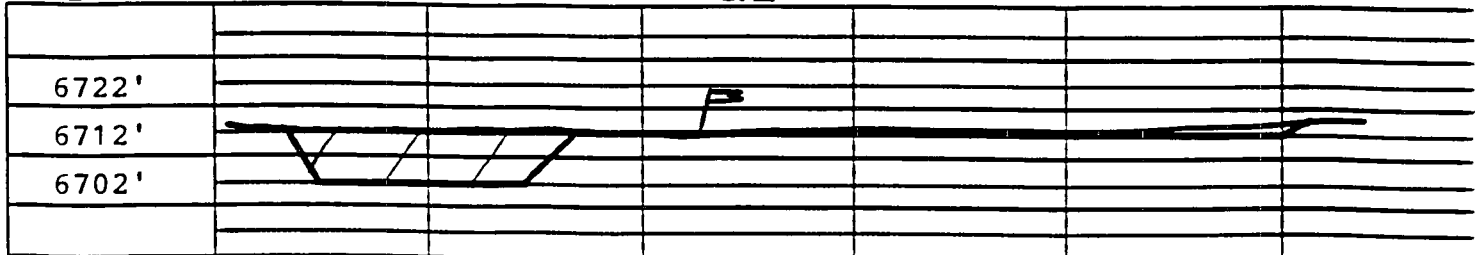
A - A'

C/L



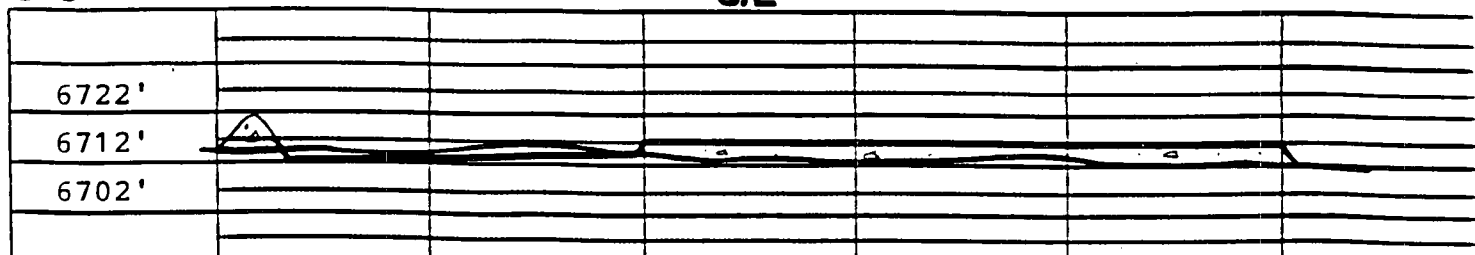
B - B'

C/L



C - C'

C/L

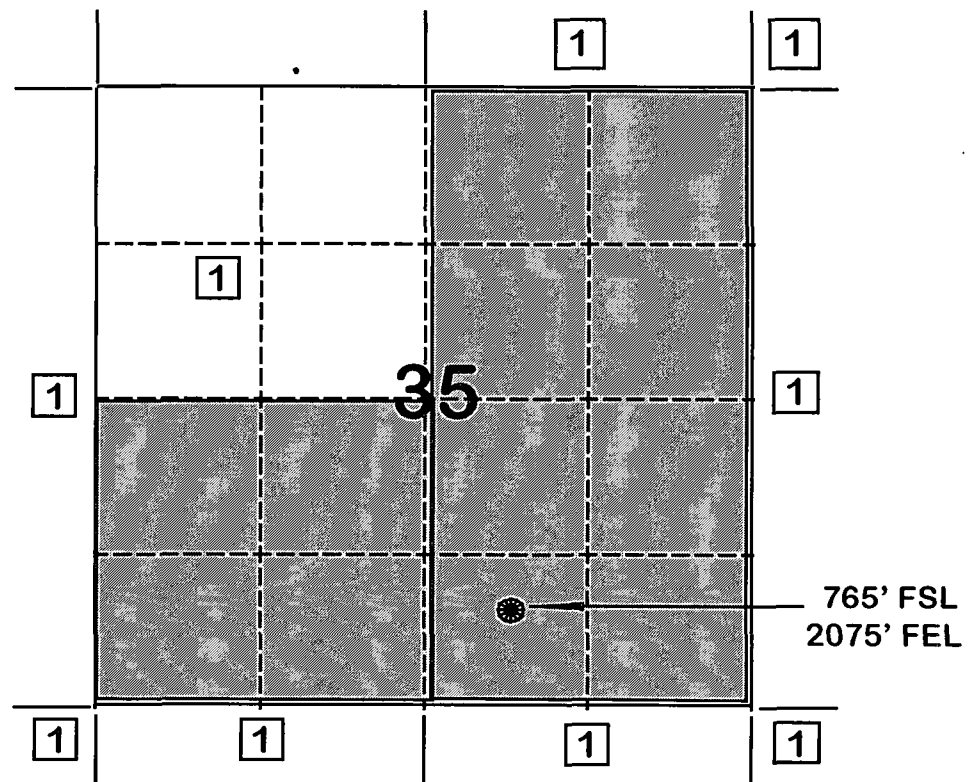


Note: Contractor should call One-Call for location of any marked or unmarked buried pipelines or cables.

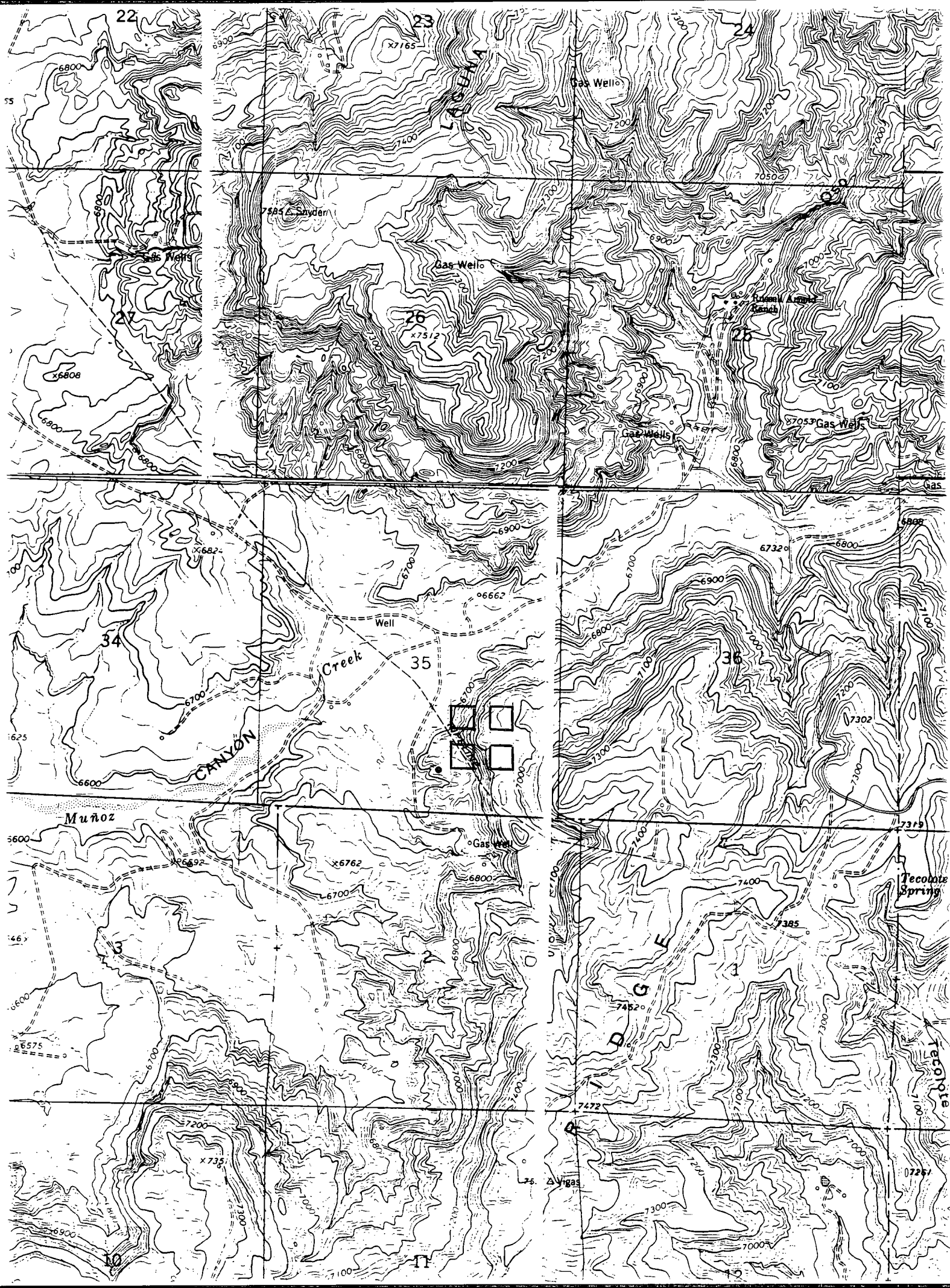
BURLINGTON RESOURCES OIL AND GAS COMPANY

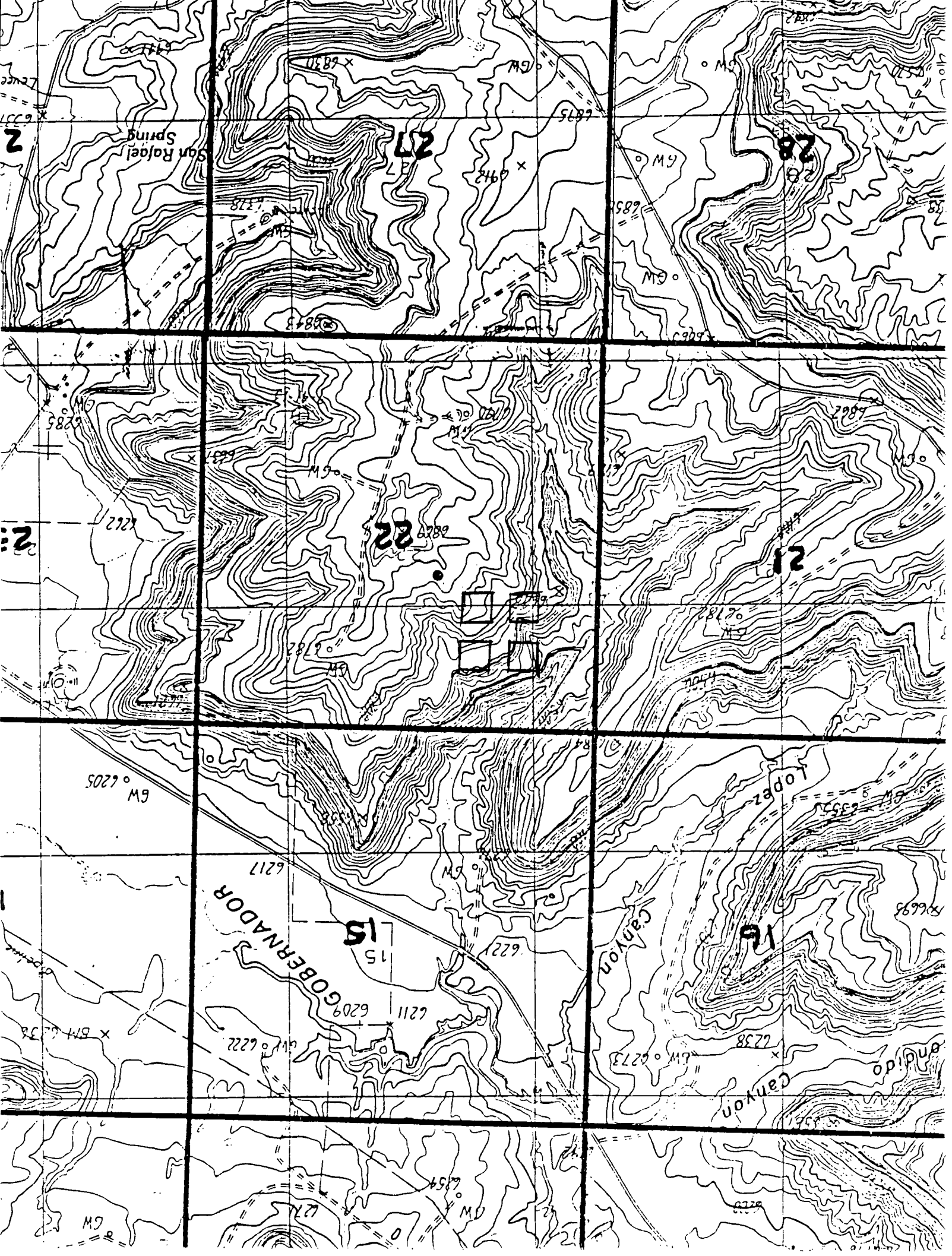
**San Juan 28-5 Unit #73M
OFFSET OPERATOR \ OWNER PLAT
Nonstandard Location
Mesaverde (S/2)/Dakota (E/2) Formations Well**

Township 28 North, Range 5 West



1) Burlington Resources Oil and Gas Company Successor to Meridian Oil Inc.





Sec : 35 Twp : 28N Rng : 05W Section Type : NORMAL

D 40.00 Federal owned	C 40.00 Federal owned	B 40.00 Federal owned	A 40.00 Federal owned
E 40.00 Federal owned	F 40.00 Federal owned	G 40.00 Federal owned A A	H 40.00 Federal owned

M0002: This is the first page

PF01 HELP

PF02

PF03 EXIT

PF04 GoTo

PF05

PF06

PF07 BKWD

PF08 FWD

PF09 PRINT

PF10 SDIV

PF11

PF12

Sec : 35 Twp : 28N Rng : 05W Section Type : NORMAL

L 40.00 Fee owned A	K 40.00 Fee owned	J 40.00 Fee owned	I 40.00 Federal owned
4 48.58 Federal owned	3 49.76 Federal owned A	2 50.92 Federal owned	1 52.10 Federal owned

PF01 HELP PF02 PF03 EXIT PF04 GoTo PF05 PF06
PF07 BKWD PF08 FWD PF09 PRINT PF10 SDIV PF11 PF12

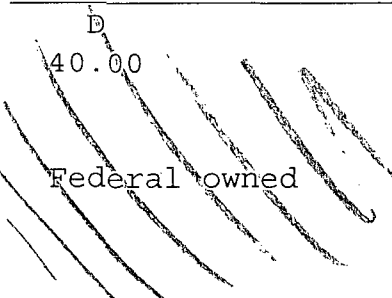
1 1 0
88.58
89.76
178.34
90.92
269.26
92.10
361.36

140.92

60
50.92
130.92

160
80
240
50.92
1290.92
4
33092

Sec : 36 Twp : 28N Rng : 05W Section Type : NORMAL

D 40.00  Federal owned	C 40.00 Federal owned	B 40.00 Federal owned A	1 52.28 Federal owned
E 40.00 Federal owned	F 40.00 Federal owned	G 40.00 Federal owned A	2 52.46 Federal owned

PF01 HELP PF02 PF03 EXIT PF04 GoTo PF05 PF06
PF07 BKWD PF08 FWD PF09 PRINT PF10 SDIV PF11 PF12

40

140.92
4
180.92
160.00
340.92

140.92
4
180.92
16
340.92

CMD :
OG5SECT

ONGARD
INQUIRE LAND BY SECTION

03/24/97 13:59:48
OGOMES -EMFM
PAGE NO: 2

Sec : 36 Twp : 28N Rng : 05W Section Type : NORMAL

L 40.00 Federal owned	K 40.00 Federal owned	J 40.00 Federal owned	3 52.62 Federal owned
4 53.29 Federal owned	5 54.50 Federal owned A	6 55.71 Federal owned	7 8 52.80 22.65 Federal owned

PF01 HELP
PF07 BKWD

PF02
PF08 FWD

PF03 EXIT
PF09 PRINT

PF04 GoTo
PF10 SDIV

PF05
PF11

PF06
PF12

BEFORE THE OIL CONSERVATION COMMISSION
OF THE STATE OF NEW MEXICO

IN THE MATTER OF THE HEARING
CALLED BY THE OIL CONSERVATION
COMMISSION OF NEW MEXICO FOR
THE PURPOSE OF CONSIDERING:

CASE No. 3272
Order No. R-2948

APPLICATION OF EL PASO NATURAL GAS
COMPANY FOR NON-STANDARD GAS PRORA-
TION UNITS, BASIN-DAKOTA GAS POOL,
RIO ARRIBA COUNTY, NEW MEXICO.

ORDER OF THE COMMISSION

BY THE COMMISSION:

This cause came on for hearing at 9 o'clock a.m. on June 30, 1965, at Santa Fe, New Mexico, before Examiner Daniel S. Nutter.

NOW, on this 16th day of August, 1965, the Commission, a quorum being present, having considered the testimony, the record, and the recommendations of the Examiner, and being fully advised in the premises,

FINDS:

(1) That due public notice having been given as required by law, the Commission has jurisdiction of this cause and the subject matter thereof.

(2) That the applicant, El Paso Natural Gas Company, seeks approval of 51 non-standard gas proration units in the Basin-Dakota Gas Pool, Rio Arriba County, New Mexico, in the following area:

TOWNSHIP 28 NORTH, RANGE 5 WEST, NMPM
Sections 7 through 13, 24 and 25, and
33 through 36

TOWNSHIP 28 NORTH, RANGE 6 WEST, NMPM
Sections 7 through 12, 18 and 19, and
30 through 34

TOWNSHIP 28 NORTH, RANGE 7 WEST, NMPM
Sections 7 through 12, 18 and 19, and
30 through 36

(3) That a standard gas proration unit in the Basin-Dakota Gas Pool consists of 320 acres, and that each of the proposed non-standard units exceeds 320 acres.

(4) That non-standard units are necessary in the subject area due to variations in legal subdivisions of the U. S. Public Land Survey.

(5) That the non-standard units created in the subject area should approximate 320 acres, insofar as is practicable, in order to afford to the owner of each property in the Basin-Dakota Gas Pool the opportunity to produce his just and equitable share of the gas in the pool, and otherwise prevent waste and protect correlative rights.

(6) That non-standard gas proration units approximating 320 acres, insofar as is practicable, should be created in the subject area, and that the subject application should otherwise be denied.

IT IS THEREFORE ORDERED:

(1) That the following-described non-standard gas proration units in the Basin-Dakota Gas Pool are hereby approved:

RIO ARriba COUNTY, NEW MEXICO

TOWNSHIP 28 NORTH, RANGE 5 WEST, NMMPM

Unit	Acres	Description
1	322.96	Section 7: Lots 1, 2, 3, and 4 and S/2 S/2 Section 8: SW/4 SW/4
2	313.42	Section 8: Lots 1, 2, 3, and 4, SE/4 SW/4, and S/2 SE/4 Section 9: Lot 4 and SW/4 SW/4
3	322.35	Section 9: Lots 1, 2, and 3, SE/4 SW/4, and S/2 SE/4 Section 10: Lot 4 and S/2 SW/4
4	321.61	Section 10: Lots 1, 2, and 3 and S/2 SE/4 Section 11: Lot 4, S/2 SW/4, and SW/4 SE/4

-3-

CASE No. 3272

Order No. R-2948

TOWNSHIP 28 NORTH, RANGE 5 WEST, NMPM (CONT.)

Unit	Acres	Description
5	310.19	Section 11: Lots 1, 2, and 3 and SE/4 SE/4 Section 12: Lots 3 and 4, S/2 SW/4, and SW/4 SE/4
6	342.30	Section 12: Lots 1, 2, and 5 Section 13: Lots 1 and 2, W/2 NE/4, and NW/4 SE/4
7	327.36	Section 13: Lots 3 and 4 and SW/4 SE/4 Section 24: Lots 1 and 2 and W/2 NE/4
8	329.09	Section 24: Lots 3 and 4 and W/2 SE/4 Section 25: Lots 1 and 2 and NW/4 NE/4
9	316.76	Section 25: Lots 3 and 4, SW/4 NE/4 and W/2 SE/4 Section 36: Lot 1 and NW/4 NE/4
10	330.74	Section 36: Lots 2, 3, 5, 6, 7, and 8 and NW/4 SE/4
11	345.39	Section 36: Lot 4, NE/4 NW/4, S/2 NW/4, SW/4 NE/4, and N/2 SW/4 Section 35: Lot 1
12	330.92	Section 36: NW/4 NW/4 Section 35: Lot 2, NE/4, and N/2 SE/4
13	345.82	Section 35: Lots 3 and 4, NE/4 NW/4, S/2 NW/4, and N/2 SW/4 Section 34: Lot 1
14	326.42	Section 35: NW/4 NW/4 Section 34: Lot 2, NE/4, and N/2 SE/4
15	329.70	Section 34: W/2
16	325.46	Section 33: E/2

-4-

CASE No. 3272

Order No. R-2948

TOWNSHIP 28 NORTH, RANGE 6 WEST, NMPM

Unit	Acres	Description
1	353.10	Section 12: Lots 1, 2, 3, and 4 and S/2 S/2 Section 11: Lot 1 and SE/4 SE/4
2	353.83	Section 11: Lots 2, 3, and 4, S/2 SW/4, and SW/4 SE/4 Section 10: Lots 1 and 2 and S/2 SE/4
3	354.79	Section 10: Lots 3 and 4 and S/2 SW/4 Section 9: Lots 1, 2, and 3, SE/4 SW/4, and S/2 SE/4
4	356.16	Section 9: Lot 4 and SW/4 SW/4 Section 8: Lots 1, 2, 3, and 4 and S/2 S/2
5	326.18	Section 7: Lots 1, 2, 3, 4, and 5, SE/4 SW/4, and S/2 SE/4 Section 18: Lot 1 and NE/4 NW/4
6	328.37	Section 18: Lots 2, 3, and 4, SE/4 NW/4, and E/2 SW/4 Section 19: Lots 1 and 2 and E/2 NW/4
7	328.77	Section 19: Lots 3 and 4 and E/2 SW/4 Section 30: Lots 1, 2, and 3, E/2 NW/4, and NE/4 SW/4
8	334.79	Section 30: Lot 4 and SE/4 SW/4 Section 31: Lots 1, 2, 3, 4, and 5, E/2 NW/4, and NE/4 SW/4
9	326.29	Section 31: E/2
10	325.23	Section 32: W/2
11	325.04	Section 32: E/2
12	325.59	Section 33: W/2
13	325.02	Section 33: E/2
14	324.69	Section 34: W/2
15	324.63	Section 34: E/2

-5-

CASE No. 3272

Order No. R-2948

TOWNSHIP 28 NORTH, RANGE 7 WEST, NMPM

Unit	Acres	Description
1	321.22	Section 12: Lots 1, 2, 3, and 4 and S/2 S/2 Section 11: Lot 1
2	333.76	Section 11: Lots 2, 3, and 4 and S/2 S/2 Section 10: Lot 1 and SE/4 SE/4
3	331.55	Section 10: Lots 2, 3, and 4, S/2 SW/4, and SW/4 SE/4 Section 9: Lots 1 and 2 and SE/4 SE/4
4	338.02	Section 9: Lots 3 and 4, S/2 SW/4, and SW/4 SE/4 Section 8: Lots 1, 2, and 3 and SE/4 SE/4
5	313.00	Section 8: Lot 4, S/2 SW/4, and SW/4 SE/4 Section 7: Lot 1, SE/4 SW/4, and S/2 SE/4
6	331.11	Section 7: Lots 2, 3, 4, and 5 Section 18: Lots 1, 2, and 3 and E/2 NW/4
7	345.30	Section 18: Lot 4 and E/2 SW/4 Section 19: Lots 1, 2, and 3, E/2 NW/4, and NE/4 SW/4
8	342.17	Section 19: Lot 4 and SE/4 SW/4 Section 30: Lots 1, 2, 3, and 4, E/2 NW/4, and NE/4 SW/4
9	316.50	Section 30: SE/4 SW/4 Section 31: Lot 1, E/2 NW/4, and NE/4
10	339.73	Section 31: Lots 2, 3, 4, 5, 6, and 7, NE/4 SW/4, and N/2 SW/4
11	315.36	Section 32: W/2
12	315.68	Section 32: E/2
13	316.00	Section 33: W/2
14	316.32	Section 33: E/2

-6-
CASE No. 3272
Order No. R-2948

TOWNSHIP 28 NORTH, RANGE 7 WEST, NMPM (CONT.)

Unit	Acres	Description
15	318.40	Section 34: W/2
16	324.70	Section 35: W/2
17	327.70	Section 35: E/2
18	328.82	Section 36: W/2
19	328.06	Section 36: E/2

(2) That the subject application is otherwise hereby denied.

(3) That jurisdiction of this cause is retained for the entry of such further orders as the Commission may deem necessary.

DONE at Santa Fe, New Mexico, on the day and year hereinabove designated.

STATE OF NEW MEXICO
OIL CONSERVATION COMMISSION

JACK M. CAMPBELL, Chairman

GUYTON B. HAYS, Member

S E A L

A. L. PORTER, JR., Member & Secretary

esr/

BEFORE THE OIL CONSERVATION COMMISSION
OF THE STATE OF NEW MEXICO

IN THE MATTER OF THE HEARING
CALLED BY THE OIL CONSERVATION
COMMISSION OF NEW MEXICO FOR
THE PURPOSE OF CONSIDERING:

CASE No. 4042
Order No. R-2948-A

APPLICATION OF EL PASO NATURAL GAS
COMPANY FOR AN AMENDMENT TO ORDER
NO. R-2948, RIO ARriba COUNTY, NEW
MEXICO.

ORDER OF THE COMMISSION

BY THE COMMISSION:

This cause came on for hearing at 9 a.m. on February 5, 1969,
at Santa Fe, New Mexico, before Examiner Daniel S. Nutter.

NOW, on this 11th day of February, 1969, the Commission, a
quorum being present, having considered the testimony, the record,
and the recommendations of the Examiner, and being fully advised
in the premises,

FINDS:

(1) That due public notice having been given as required by
law, the Commission has jurisdiction of this cause and the subject
matter thereof.

(2) That by Order No. R-2948, dated August 16, 1965, the
Commission approved several non-standard gas proration units in
the Basin-Dakota Gas Pool, Rio Arriba County, New Mexico, among
them the following:

TOWNSHIP 28 NORTH, RANGE 6 WEST, NMPM

Unit	Acres	Description
12	325.59	Section 33: W/2
13	325.02	Section 33: E/2

-2-

CASE No. 4042

Order No. R-2948-A

TOWNSHIP 28 NORTH, RANGE 7 WEST, NMPM

Unit	Acres	Description
16	324.70	Section 35: W/2
17	327.70	Section 35: E/2

(3) That the applicant, El Paso Natural Gas Company, now seeks amendment of Order No. R-2948 to change the acreage dedication comprising the above-described non-standard gas proration units to comprise the following acreage:

TOWNSHIP 28 NORTH, RANGE 6 WEST, NMPM

Unit	Acres	Description
12	320	Section 33: N/2
13	330.71	Section 33: S/2

TOWNSHIP 28 NORTH, RANGE 7 WEST, NMPM

Unit	Acres	Description
16	320	Section 35: N/2
17	332.40	Section 35: S/2

(4) That the N/2 of said Section 33 has been admitted to the participating area for the Dakota formation of the San Juan 28-6 Unit.

(5) That the S/2 of said Section 35 has been admitted to the participating area for the Dakota formation of the San Juan 28-7 Unit.

(6) That each participating area should coincide with a proration unit.

(7) That approval of the subject application will allow each of the aforesaid participating areas to coincide with a proration unit and will afford the applicant the opportunity

CASE No. 4042

Order No. R-2948-A

to produce its just and equitable share of the gas in the Basin-Dakota Gas Pool and will otherwise prevent waste and protect correlative rights.

IT IS THEREFORE ORDERED:

(1) That Order No. R-2948, dated August 16, 1965, is hereby amended by deleting therefrom the following-described non-standard gas proration units in the Basin-Dakota Gas Pool, Rio Arriba County, New Mexico:

TOWNSHIP 28 NORTH, RANGE 6 WEST, NMPM

Unit	Acres	Description
12	325.59	Section 33: W/2
13	325.02	Section 33: E/2

TOWNSHIP 28 NORTH, RANGE 7 WEST, NMPM

Unit	Acres	Description
16	324.70	Section 35: W/2
17	327.70	Section 35: E/2

and substituting in lieu thereof the following-described gas proration units:

TOWNSHIP 28 NORTH, RANGE 6 WEST, NMPM

Unit	Acres	Description
12	320	Section 33: N/2
13	330.71	Section 33: S/2

TOWNSHIP 28 NORTH, RANGE 7 WEST, NMPM

Unit	Acres	Description
16	320	Section 35: N/2
17	332.40	Section 35: S/2

-4-

CASE No. 4042

Order No. R-2948-A

(2) That jurisdiction of this cause is retained for the entry of such further orders as the Commission may deem necessary.

DONE at Santa Fe, New Mexico, on the day and year hereinabove designated.

STATE OF NEW MEXICO

OIL CONSERVATION COMMISSION

DAVID F. CARGO, Chairman

ALEX J. ARMIJO, Member

A. L. PORTER, Jr., Member & Secretary

S E A L

esr/