

NSL 4/29/97

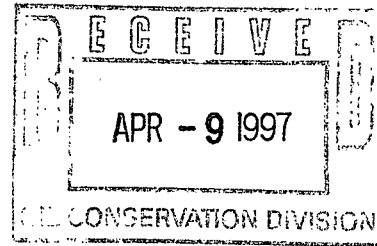
BURLINGTON RESOURCES

SAN JUAN DIVISION

April 7, 1997

Sent Federal Express

Mr. William LeMay
New Mexico Oil Conservation Division
2040 South Pacheco
Santa Fe, New Mexico 87505



Re: San Juan 30-6 Unit #61A
1410'FNL, 910'FWL Section 34, T-30-N, R-6-W, Rio Arriba County, New Mexico
API # 30-039-(not yet assigned)

Dear Mr. LeMay:

Burlington Resources is applying for administrative approval of a non-standard location for the above location in the Mesa Verde formation. This application for the referenced location is due to terrain, and the presence of archaeology.

The following attachments are for your review:

1. Application for Permit to Drill.
2. Completed C-102 at referenced location.
3. Offset operators/owners plat
4. 7.5 minute topographic map showing the orthodox windows, and enlargement of the map to define topographic features.

We appreciate your earliest consideration of this application.

Sincerely,


Peggy Bradfield
Regulatory/Compliance Representative

xc: Bureau of Land Management

WAIVER

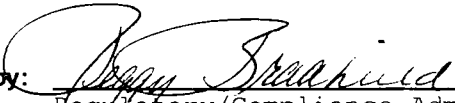
_____ hereby waives objection to Burlington Resources' application for a non-standard location for their San Juan 30-6 Unit #61A as proposed above.

By: _____ Date: _____

xc: Phillips Petroleum

UNITED STATES
DEPARTMENT OF THE INTERIOR
BUREAU OF LAND MANAGEMENT

APPLICATION FOR PERMIT TO DRILL, DEEPEN, OR PLUG BACK

1a. Type of Work DRILL	5. Lease Number SF-080711A Unit Reporting Number 8910005380
1b. Type of Well GAS	6. If Indian, All. or Tribe
2. Operator BURLINGTON RESOURCES Oil & Gas Company	7. Unit Agreement Name San Juan 30-6 Unit
3. Address & Phone No. of Operator PO Box 4289, Farmington, NM 87499 (505) 326-9700	8. Farm or Lease Name San Juan 30-6 Unit 9. Well Number 61A
4. Location of Well 1410' FNL, 910' FWL Latitude 36° 46' 22", Longitude 107° 27' 19"	10. Field, Pool, Wildcat Blanco Mesa Verde 11. Sec., Twn, Rge, Mer. (NMPM) Sec 34, T-30-N, R-6-W API # 30-039-
14. Distance in Miles from Nearest Town 7 miles to Gobernador	12. County 13. State Rio Arriba NM
15. Distance from Proposed Location to Nearest Property or Lease Line 910'	17. Acres Assigned to Well 320 W/2
16. Acres in Lease	18. Distance from Proposed Location to Nearest Well, Drlg, Compl, or Applied for on this Lease 2500'
19. Proposed Depth 6048'	20. Rotary or Cable Tools Rotary
21. Elevations (DF, FT, GR, Etc.) 6511' GR	22. Approx. Date Work will Start
23. Proposed Casing and Cementing Program See Operations Plan attached	
24. Authorized by:  Regulatory/Compliance Administrator	1-20-97 Date

PERMIT NO. _____ APPROVAL DATE _____

APPROVED BY _____ TITLE _____ DATE _____

Archaeological Report to be submitted
Threatened and Endangered Species Report to be submitted
NOTE: This format is issued in lieu of U.S. BLM Form 3160-3

District I
PO Box 1980, Hobbs, NM 88241-1980
District II
PO Drawer DD, Artesia, NM 88211-0719
District III
1000 Rio Brazos Rd., Aztec, NM 87410
District IV
PO Box 2088, Santa Fe, NM 87504-2088

State of New Mexico
Energy, Minerals & Natural Resources Department

OIL CONSERVATION DIVISION
PO Box 2088
Santa Fe, NM 87504-2088

Form C-102
Revised February 21, 1994
Instructions on back
Submit to Appropriate District Office
State Lease - 4 Copies
Fee Lease - 3 Copies

☐ AMENDED REPORT

WELL LOCATION AND ACREAGE DEDICATION PLAT

API Number 30-039-	Pool Code 72319	Pool Name Blanco Mesaverde
Property Code 7469	Property Name San Juan 30-6 Unit	Well Number 61A
OGRID No. 14538	Operator Name BURLINGTON RESOURCES OIL & GAS COMPANY	Elevation 6511'

¹⁰ Surface Location

UL or lot no.	Section	Township	Range	Lot Idn	Feet from the	North/South line	Feet from the	East/West line	County
E	34	30-N	6-W		1410	North	910	West	R.A.

¹¹ Bottom Hole Location If Different From Surface

UL or lot no.	Section	Township	Range	Lot Idn	Feet from the	North/South line	Feet from the	East/West line	County

¹² Dedicated Acres W/320	¹³ Joint or Infill	¹⁴ Consolidation Code	¹⁵ Order No.
--	-------------------------------	----------------------------------	-------------------------

NO ALLOWABLE WILL BE ASSIGNED TO THIS COMPLETION UNTIL ALL INTERESTS HAVE BEEN CONSOLIDATED
OR A NON-STANDARD UNIT HAS BEEN APPROVED BY THE DIVISION

<div><p>16</p><p>5278.68'</p><p>1410'</p><p>910'</p><p>SF-080711-A</p><p>34</p><p>5280.00'</p><p>FEE</p><p>SF-080711-B</p><p>5280.00'</p></div>	<div><p>17 OPERATOR CERTIFICATION</p><p>I hereby certify that the information contained herein is true and complete to the best of my knowledge and belief</p><p><i>Peggy Bradfield</i></p><p>Signature Peggy Bradfield</p><p>Printed Name Regulatory Administrator</p><p>Title 1-20-97</p><p>Date</p><p>18 SURVEYOR CERTIFICATION</p><p>I hereby certify that the well location shown on this plat was plotted from field notes of actual surveys made by me or under my supervision, and that the same is true and correct to the best of my belief.</p><p>11/15/96</p><p>Date of Survey</p><p>Signature and Seal of Professional Surveyor</p><p>6857</p><p>Certificate Number</p></div>
---	--

OPERATIONS PLAN

Well Name: San Juan 30-6 Unit #61A
Location: 1410' FNL, 910' FWL Section 34, T-30-N, R-6-W
Rio Arriba County, New Mexico
Latitude 36° 46' 21", Longitude 107° 27' 19"
Formation: Blanco Mesa Verde
Elevation: 6511' GL

<u>Formation Tops:</u>	<u>Top</u>	<u>Bottom</u>	<u>Contents</u>
Surface	San Jose	2583'	aquifer
Ojo Alamo	2583'	3023'	aquifer
Fruitland	3023'	3458'	gas
Pictured Cliffs	3458'	3553'	gas
Lewis	3553'	4153'	gas
Intermediate TD	3603'		
Mesa Verde	4153'	4478'	gas
Chacra	4478'	5308'	
Massive Cliff House	5308'	5343'	gas
Menefee	5343'	5648'	gas
Point Lookout	5648'		gas
Total Depth	6048'		

Logging Program:

Cased hole logging - Gamma Ray Neutron
Mud Logs/Coring/DST - none

Mud Program:

<u>Interval</u>	<u>Type</u>	<u>Weight</u>	<u>Vis.</u>	<u>Fluid Loss</u>
0- 200'	Spud	8.4-9.0	40-50	no control
200-3603'	LSND	8.4-9.0	30-60	no control
3603-6048'	Gas/Mist	n/a	n/a	n/a

Pit levels will be visually monitored to detect gain or loss of fluid control.

Casing Program (as listed, the equivalent, or better):

<u>Hole Size</u>	<u>Depth Interval</u>	<u>Csg. Size</u>	<u>Wt.</u>	<u>Grade</u>
12 1/4"	0' - 200'	9 5/8"	32.3#	H-40
8 3/4"	0' - 3603'	7"	20.0#	J-55
6 1/4"	3503' - 6048'	4 1/2"	10.5#	J-55

Tubing Program:

0' - 6048' 2 3/8" 4.7# J-55

BOP Specifications, Wellhead and Tests:

Surface to Intermediate TD -

11" 2000 psi minimum double gate BOP stack (Reference Figure #1).
After nipple-up prior to drilling out surface casing, rams and casing will be tested to 600 psi for 30 minutes.

BOP Specifications, Wellhead and Tests (cont'd):Intermediate TD to Total Depth -

11" 2000 psi minimum double gate BOP stack (Reference Figure #1). After nipple-up prior to drilling out intermediate casing, rams and casing will be tested to 1500 psi for 30 minutes.

Surface to Total Depth -

2" nominal, 2000 psi minimum choke manifold (Reference Figure #3).

Completion Operations -

7 1/16" 2000 psi double gate BOP stack (Reference Figure #2). After nipple-up prior to completion, pipe rams, casing and liner top will be tested to 2000 psi for 15 minutes.

Wellhead -

9 5/8" x 7" x 2 3/8" x 2000 psi tree assembly.

General -

- Pipe rams will be actuated once each day and blind rams will be actuated once each trip to test proper functioning.
- An upper kelly cock valve with handle available and drill string valves to fit each drill string will be available on the rig floors at all times.
- BOP pit level drill will be conducted weekly for each drill crew.
- All BOP tests & drills will be recorded in daily drilling reports.
- Blind and pipe rams will be equipped with extension hand wheels.

Cementing:

9 5/8" surface casing - cement with 163 sx Class "B" cement with 1/4# flocele/sx and 3% calcium chloride (188 cu.ft. of slurry, 200% excess to circulate to surface). WOC 12 hrs. Test casing to 600 psi for 30 minutes.

Saw tooth guide shoe on bottom. Bowspring centralizers will be run in accordance with Onshore Order #2.

7" intermediate casing -

Lead w/338 sx Class "B" w/3% sodium metasilicate, 10# gilsonite/sx and 1/2# flocele/sx. Tail w/90 sx 50/50 Class "B" Poz w/2% calcium chloride, (1083 cu.ft. of slurry, 100% excess to circulate to surface.) WOC minimum of 12 hours before drilling out intermediate casing. If cement does not circulate to surface, a CBL will be run to determine TOC. Test casing to 1500 psi for 30 minutes.

Cement nose guide shoe on bottom with float collar spaced on top of shoe joint. Bowspring centralizers spaced every other joint off bottom, to the base of the Ojo Alamo at 3023'. Two turbolating centralizers at the base of the Ojo Alamo at 3023'. Bowspring centralizers spaced every fourth joint from the base of the Ojo Alamo to the base of the surface casing.

4 1/2" Production Liner -

Cement to circulate liner top. Lead with 150 sx 65/35 Class "B" poz w/6% gel, 5# gilsonite/sx and 1/4# flocele/sx. Tail with 135 sx 50/50 Class "B" Poz w/1/4# flocele/sx, 5# gilsonite/sx and 0.3% fluid loss additive (457 cu.ft., 75% excess to circulate liner top). WOC a minimum of 13 hrs prior to completing.

Cement nose guide shoe on bottom with float collar spaced on top of shoe joint. The liner hanger will have a rubber packoff.

- If hole conditions permit, an adequate water spacer will be pumped ahead of each cement job to prevent cement/ mud contamination or cement hydration.
- The pipe will be rotated and/or reciprocated, if hole conditions permit.

Special Drilling Operations (Gas/Mist Drilling):

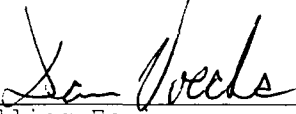
The following equipment will be operational while gas/mist drilling:

- An anchored blooie line will be utilized to discharge all cuttings and circulating medium to the blow pit a minimum of 100' from the wellhead.
- The blooie line will be equipped with an automatic igniter or pilot light.
- Compressors will be located a minimum of 100' from the wellhead in the opposite direction from the blooie line.
- Engines will have spark arresters or water cooled exhaust.
- The rotating head will be properly lubricated and maintained.
- A float valve will be utilized above the bit.
- Mud circulating equipment, water, and mud materials will be sufficient to maintain control of the well.

Additional Information:

- The Mesa Verde formation will be completed.
- No abnormal temperatures or hazards are anticipated.
- Anticipated pore pressures are as follows:

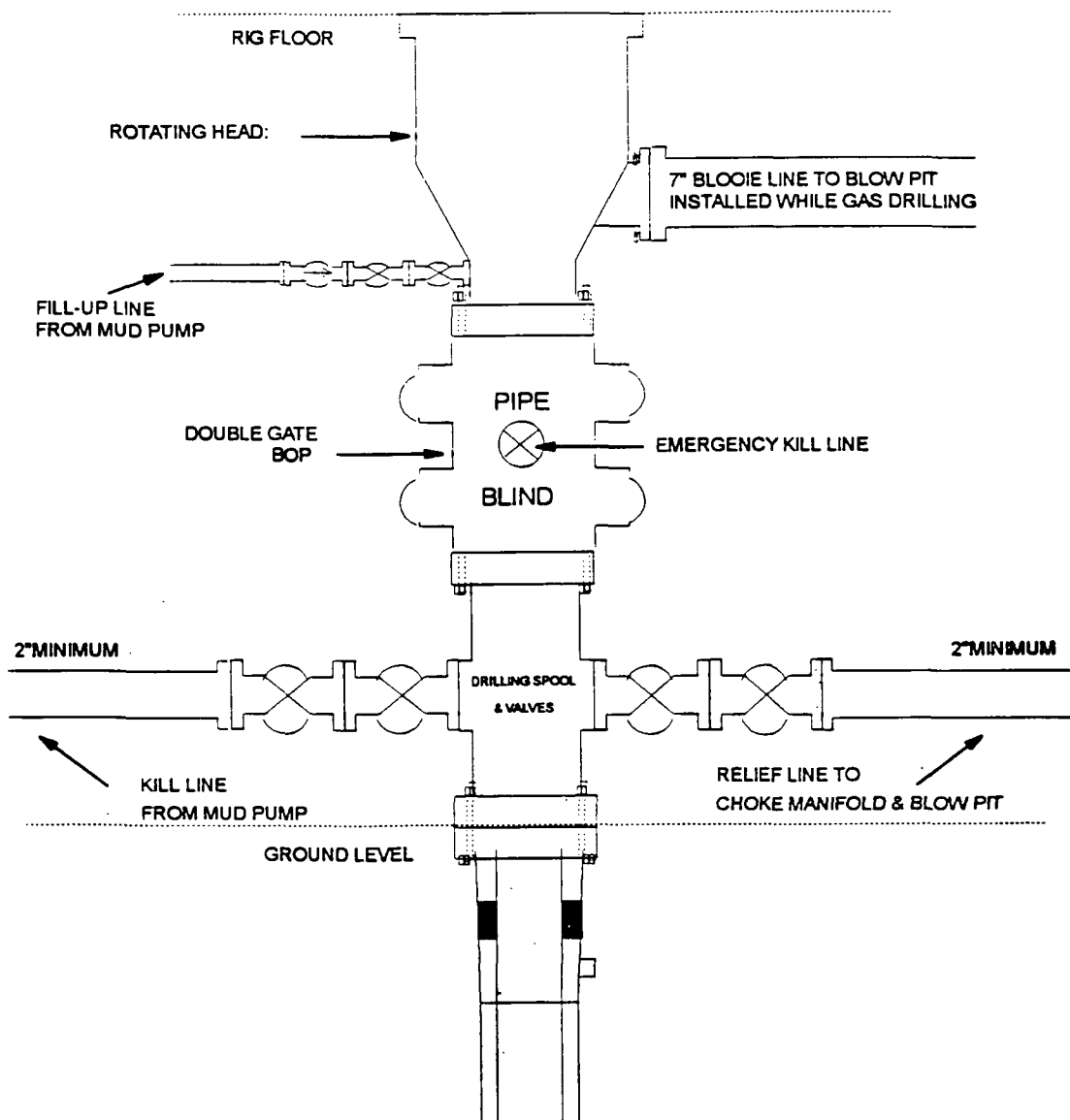
Fruitland Coal	800 psi
Pictured Cliffs	800 psi
Mesa Verde	700 psi
- Sufficient LCM will be added to the mud system to maintain well control, if lost circulation is encountered below the top of the Pictured Cliffs.
- The west half is dedicated to the Mesa Verde.
- This gas is dedicated.


Drilling Engineer

1-20-97
Date

BURLINGTON RESOURCES

BOP Configuration 2M psi System

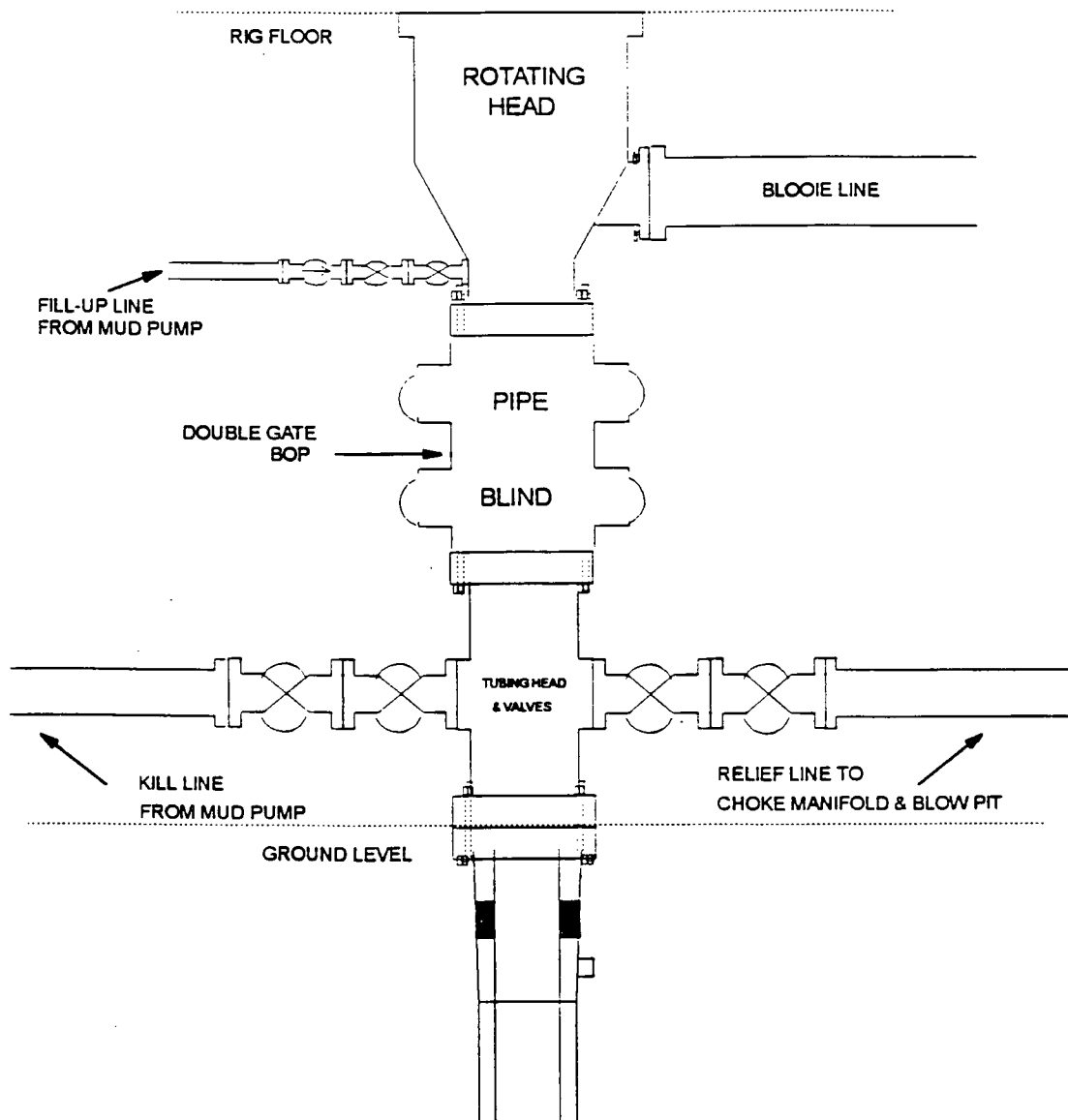


11" Bore, 2000psi minimum working pressure double gate BOP to be equipped with blind and pipe rams. A Schaffer Type 50 or equivalent rotating head to be installed on the top of the BOP. All equipment is 2000psi working pressure/or greater.

FIGURE #1

BURLINGTON RESOURCES

BOP Configuration 2M psi System

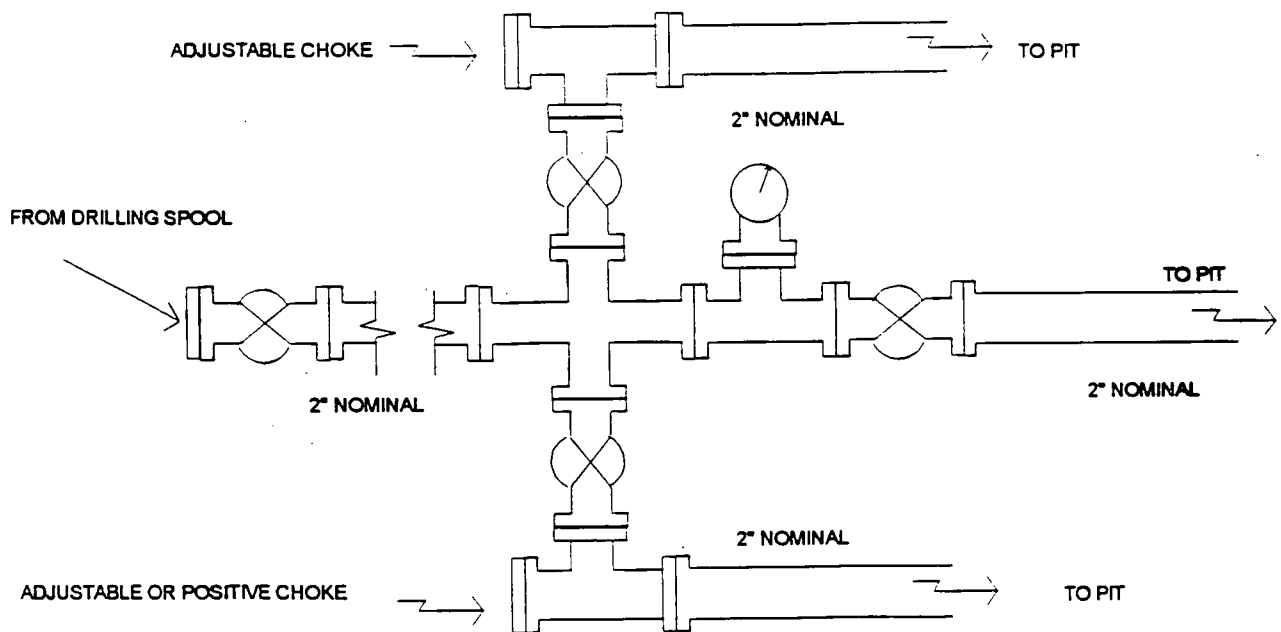


Minimum BOP installation for Completion operations. 7 1/16" Bore (6" Nominal), 2,000 psi minimum working pressure double gate BOP to be equipped with blind and pipe rams.

FIGURE #2

BURLINGTON RESOURCES

Choke Manifold Configuration 2M System



Minimum choke manifold installation from surface to Total Depth.
2" minimum, 2000psi working pressure equipment with two chokes.

Figure #3

BURLINGTON RESOURCES

San Juan 30-6 Unit #61A
Multi-Point Surface Use Plan

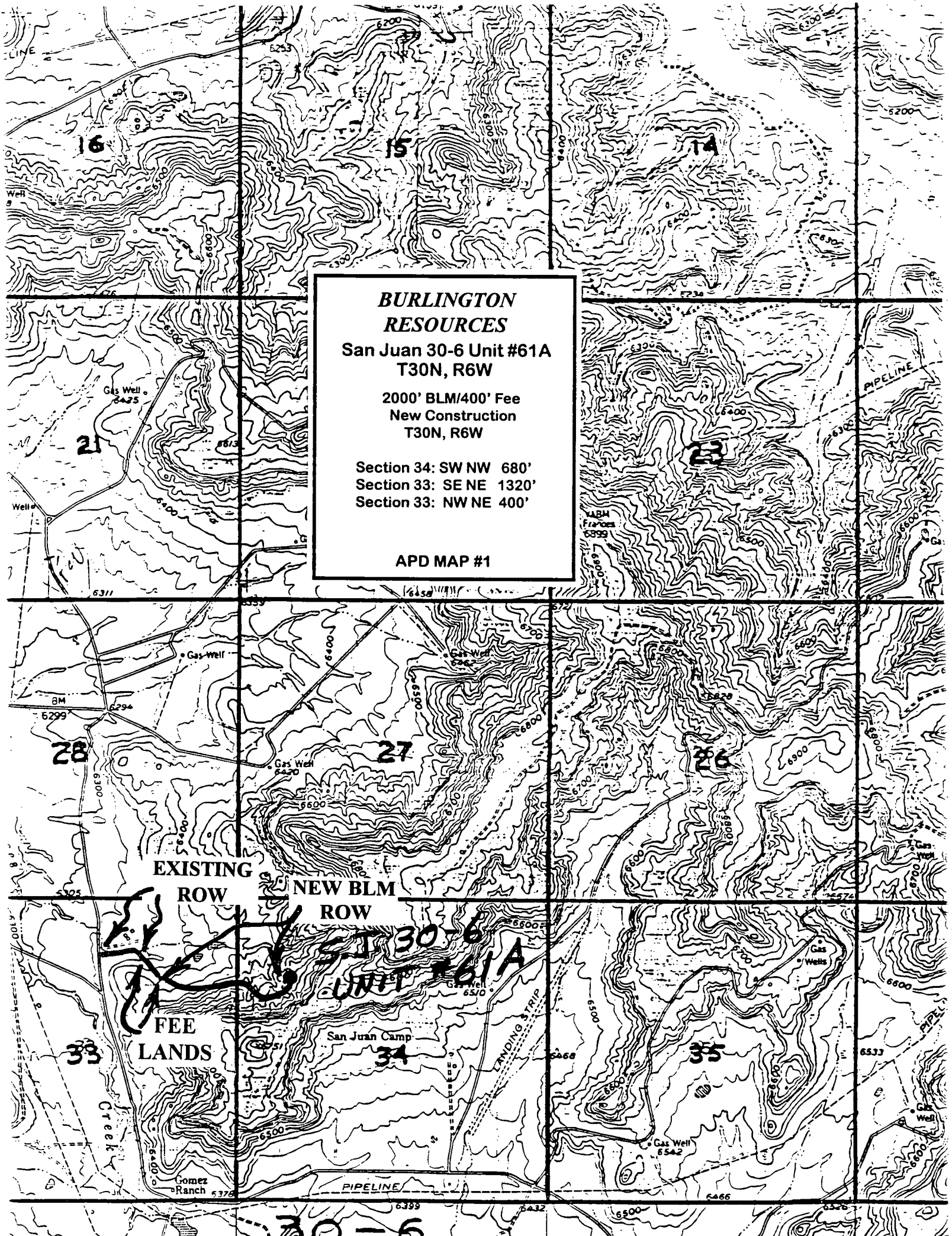
1. Existing Roads - Refer to Map No. 1. Existing roads used to access the proposed location will be properly maintained for the duration of the project. Bureau of Land Management right-of-way has been applied for as shown on Map No. 1.
2. Planned Access Road - Refer to Map No. 1. The required new access road is shown on Map No. 1. The gradient, shoulder, crowning and other design elements will meet or exceed those specified by the responsible government agency. The new access road surface will not exceed twenty feet (20') in width. No additional turnarounds or turnouts will be required. Upon completion of the project, the access road will be adequately drained to control soil erosion. Approximately 2400' of access road will be constructed. Pipelines are indicated on Map No. 1A.
3. Location of Existing Wells - Refer to Map No. 1A.
4. Location of Existing and/or Proposed Facilities if Well is Productive -
 - a. On the Well Pad - Refer to Plat No. 1, anticipated production facilities plat.
 - b. Off the Well Pad - Anticipated pipeline facilities as shown on the attached plat from Williams Field Service.
5. Location and Type of Water Supply - Water will be hauled by truck for the proposed project and will be obtained from LaJara Water Hole located SW/4 Section 11, T-30-N, R-6-W, New Mexico.
6. Source of Construction Materials - If construction materials are required for the proposed project, such materials will be obtained from a commercial quarry.
7. Methods of Handling Waste Materials - All garbage and trash materials will be removed from the site for proper disposal. A portable toilet will be provided for human waste and serviced in a proper manner. If liquids are left in the reserve pit after completion of the project, the pit will be fenced until the liquids have had adequate time to dry. The location clean-up will not take place until such time as the reserve pit can be properly covered over to prevent run-off from carrying waste materials into the watershed. Reserve pits will be lined as needed with either 12 mil bio-degradable plastic liner or a bentonite liner. All earthen pits will be so constructed as to prevent leakage from occurring; no earthen pit will be located on natural drainage. Generation of hazardous waste is not anticipated. Federal regulations will be adhered to regarding handling and disposal of such waste if so generated.
8. Ancillary Facilities - None anticipated.
9. Wellsite Layout - Refer to the location diagram and to the wellsite cut and fill diagram (Figure No. 4). The blow pit will be constructed with a 2'/160' grade to allow positive drainage to the reserve pit and prevent standing liquids in the blow pit.

10. Plans for Restoration of the Surface - After completion of the proposed project, the location will be cleaned and leveled. The location will be left in such a condition that will enable reseeding operations to be carried out. Seed mixture as designated by the responsible government agency will be used. The reseeding operations will be performed during the time period set forth by the responsible government agency. The permanent location facilities will be painted as designated by the responsible government agency.
11. Surface Ownership - Bureau of Land Management
12. Other Information - Environmental stipulations as outlined by the responsible government agency will be adhered to. Refer to the archaeological report for a description of the topography, flora, fauna, soil characteristics, dwellings, historical and cultural sites.
13. Operator's Representative and Certification - Burlington Resources Oil & Gas Company Regional Drilling Manager, Post Office Box 4289, Farmington, NM 87499, telephone (505) 326-9700. I hereby certify that I, or persons under my direct supervision, have inspected the proposed drill site and access route; that I am familiar with the conditions which presently exist; that the statements made in this plan, are to the best of my knowledge, true and correct; and that the work associated with the operations proposed herein will be performed by Burlington Resources Oil and Gas Company and its contractors and subcontractors in conformity with this plan and the terms and conditions under which it is approved.


(Regulatory/Compliance Administrator

1-20-97
Date

pb



**BURLINGTON
RESOURCES**

**San Juan 30-6 Unit #61A
T30N, R6W**

**2000' BLM/400' Fee
New Construction
T30N, R6W**

**Section 34: SW NW 680'
Section 33: SE NE 1320'
Section 33: NW NE 400'**

APD MAP #1

SAN JUAN GATHERING SYSTEM

WILLIAMS GAS PROCESSING

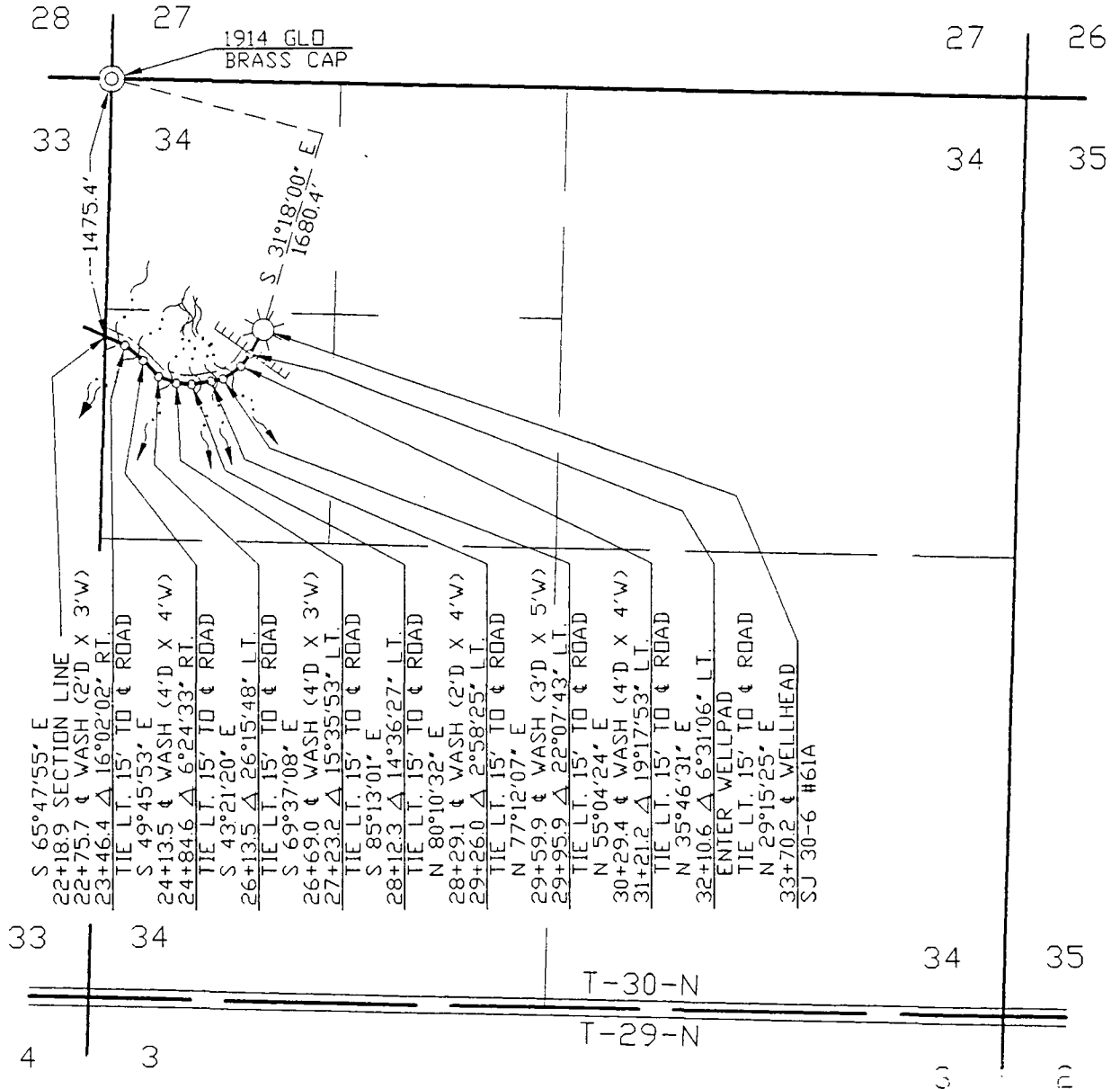
ONE OF THE WILLIAMS COMPANIES

LINE BRO&G - SJ 30-6 #61A
 FROM 0+00 = 21+35.0 ON SJ 30-6 #28
 (REF. DWG. 2M765.0-8-1)
 COUNTY RIO ARriba STATE NEW MEXICO
 SECTION 34 TOWNSHIP 30-N RANGE 6-W

SCALE 1"=1000'
 DRAWN BY RSL
 CHECKED BY FAD
 APPROVED RR
 APPROVED CK

DWG. NO. 2M765.0-24-2
 DATE 2/10/97
 SURVEYED 1/29/97
 V.D. NO.
 R/W NO.

NOTE: BEARINGS ARE BASED ON A GRID BEARING.
 ALONG THE NORTH LINE OF THE NE 1/4 OF
 SECTION 33, T-30-N, R-6-W, NMPM
 BEARS: N 88°28'01" W



APPLICATION DWG. DATE METER NO. FORMATION METER NO. FORMATION

AS-BUILT PIPE DATA

OWNERSHIP

NO.

DATE

BY

SUBDIVISION

OWNER

LEASE

FEET

MILES

ACRES

RODS

22+18.9 TO 33+70.2

BUREAU OF LAND MANAGEMENT

1151.3

0.218

1.322

69.776

1 2/10/97 RSL

ISSUED FOR REVIEW

CK

REVISION DESCRIPTION

APP.

NO.

DATE

BY

REVISION DESCRIPTION

APP.

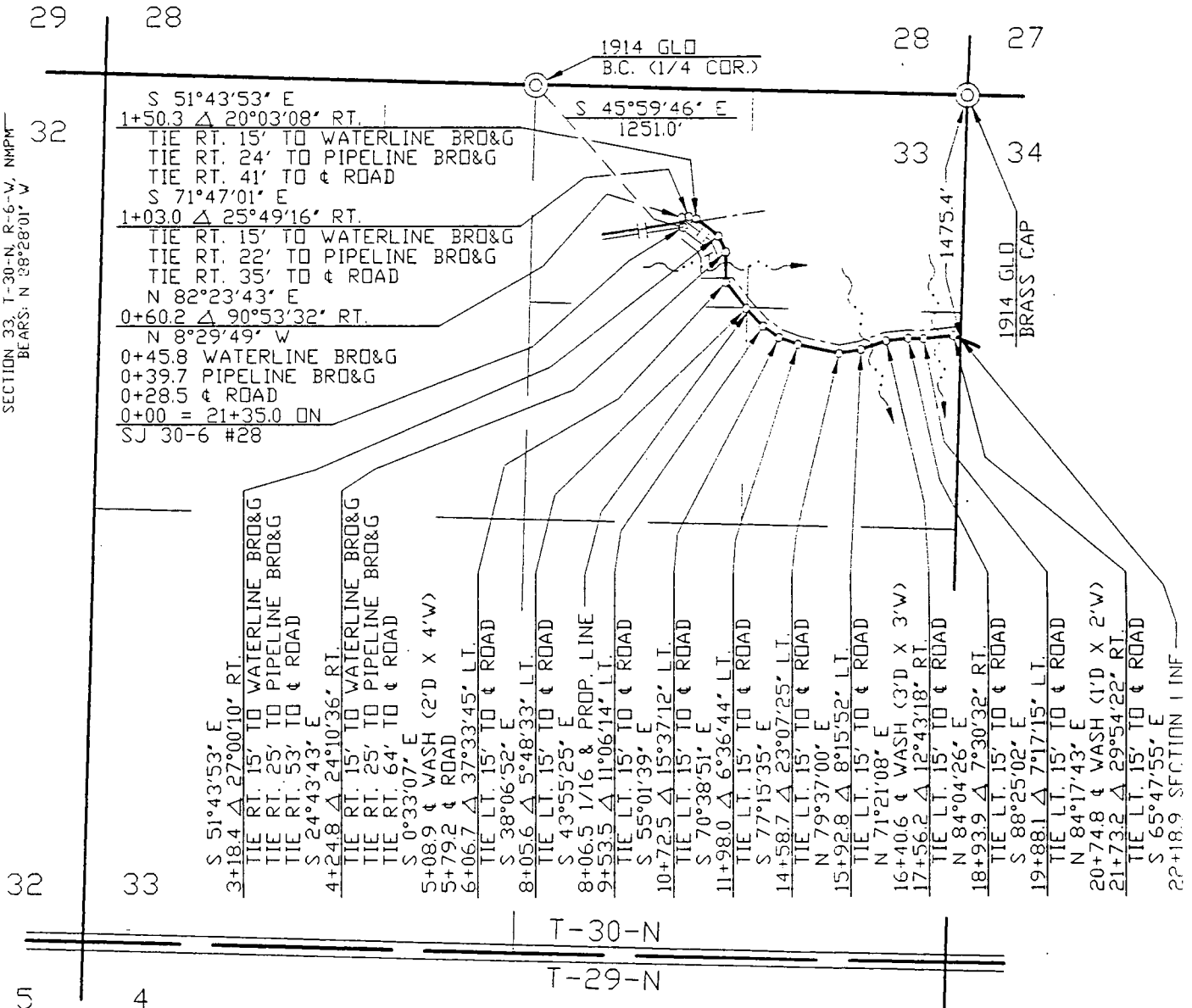
SAN JUAN GATHERING SYSTEM

WILLIAMS GAS PROCESSING
ONE OF THE WILLIAMS COMPANIES

LINE BRO&G - SJ 30-6 #61A
FROM 0+00 = 21+35.0 ON SJ 30-6 #28
(REF. DWG. 2M765.0-8-1)
COUNTY RIO ARriba STATE NEW MEXICO
SECTION 33 TOWNSHIP 30-N RANGE 6-W

SCALE 1"=1000' DWG. NO. 2M765.0-24-1
DRAWN BY RSL DATE 2/10/97
CHECKED BY FAD SURVEYED 1/29/97
APPROVED RR V.D. NO. _____
APPROVED CX R/V NO. _____

NOTE: BEARINGS ARE BASED ON A GRID BEARING.
ALONG THE NORTH LINE OF THE NE 1/4 OF
SECTION 33, T-30-N, R-6-W, NMPM
BEARS: N 38°28'01" W

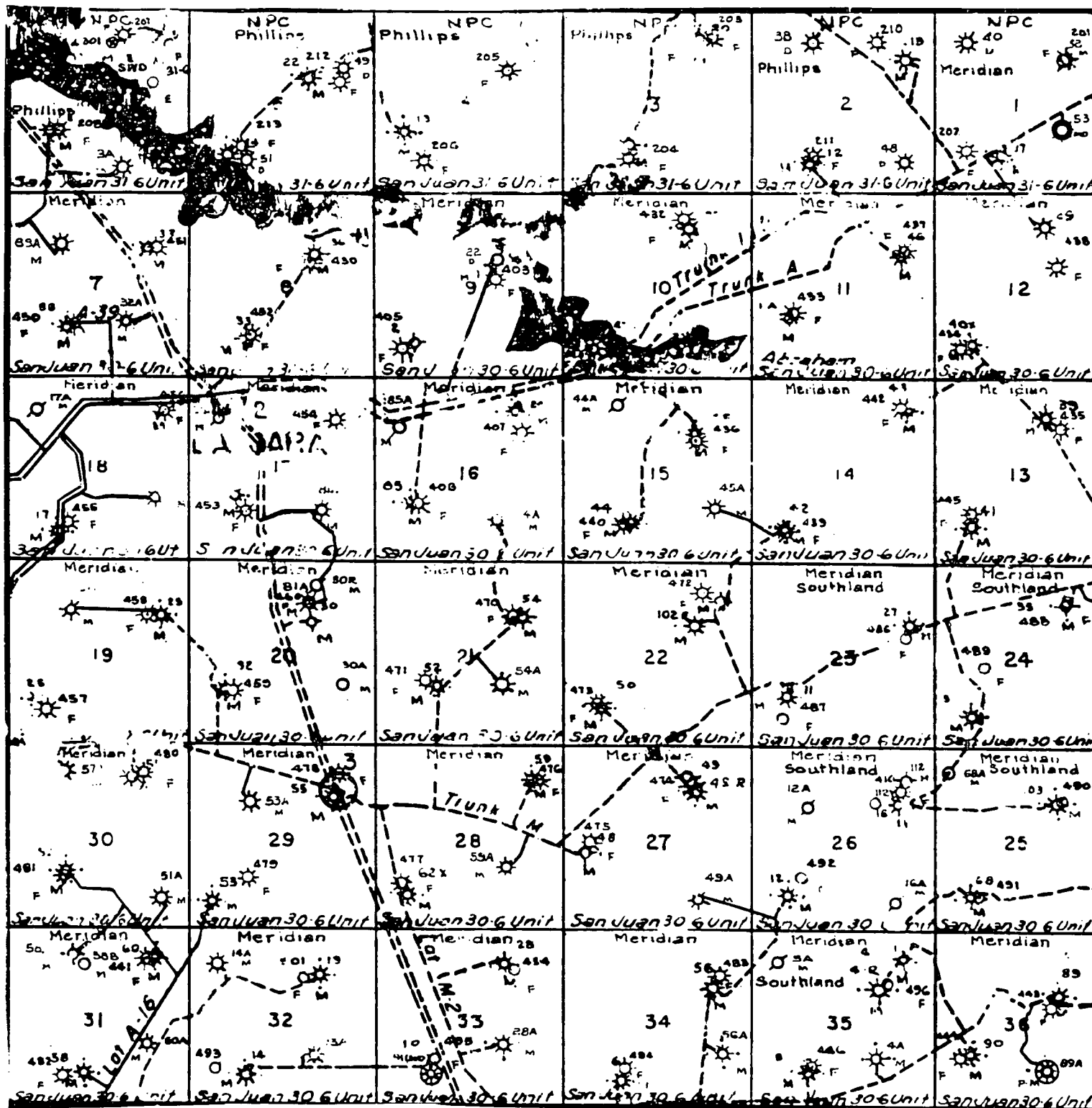


APPLICATION DWG. _____ DATE _____ METER NO. _____ FORMATION _____ METER NO. _____ FORMATION _____

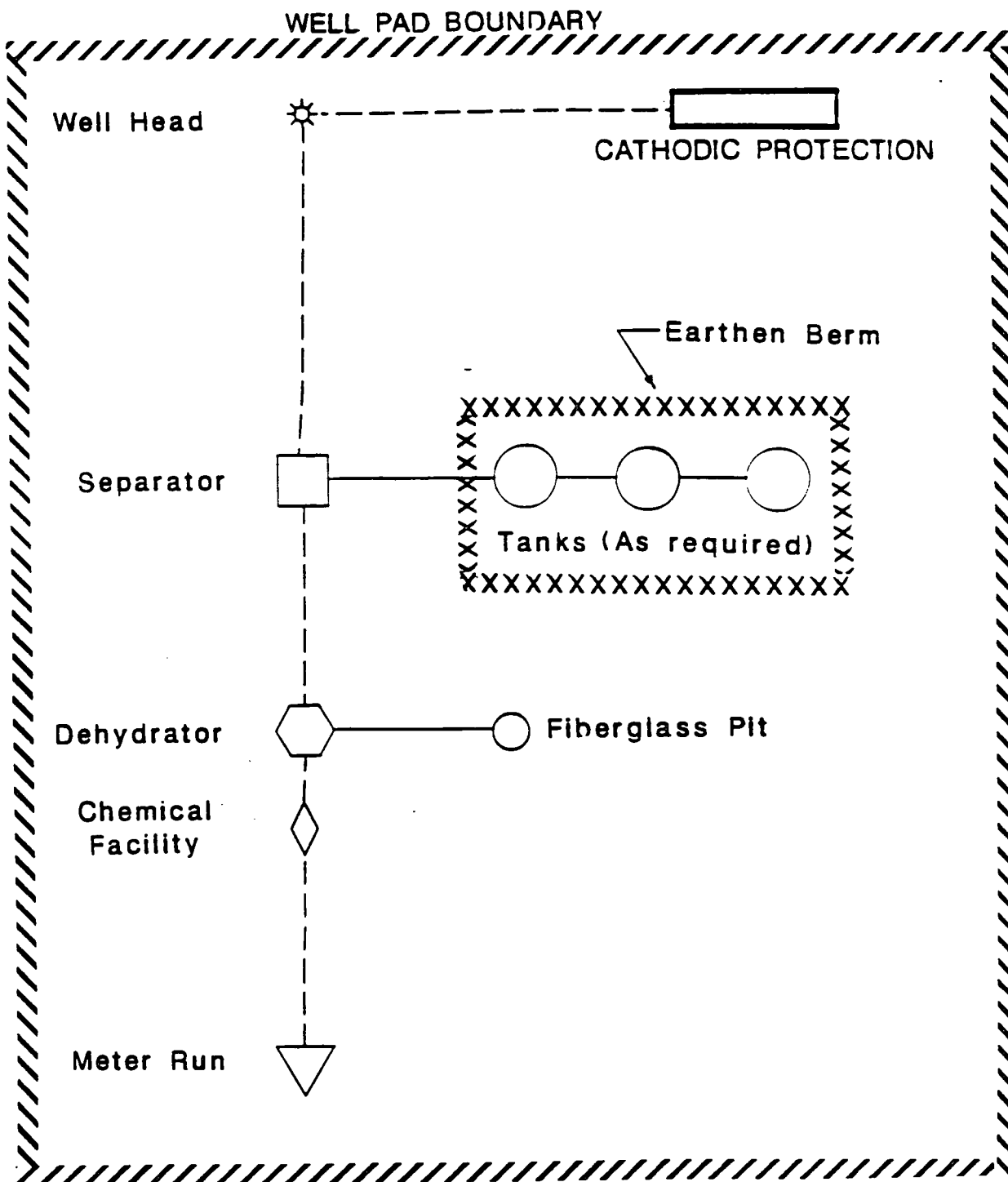
AS-BUILT PIPE DATA

SUBDIVISION	OWNER	LEASE	FEET	ACRES	RODS
0+00 TO 8+06.5	FEE		806.5	0.153	1.111
8+06.5 TO 22+18.9	BUREAU OF LAND MANAGEMENT		1412.4	0.268	1.621

NO.	DATE	BY	REVISION DESCRIPTION	APP.	NO.	DATE	BY	REVISION DESCRIPTION	APP.
1	2/10/97	RSL	ISSUED FOR REVIEW	CX					



MERIDIAN OIL INC.
 Pipeline Map
 T-30-N, R-06-W
 San Juan County, New Mexico
 San Juan 30-6 Unit #61A
 Map 1A



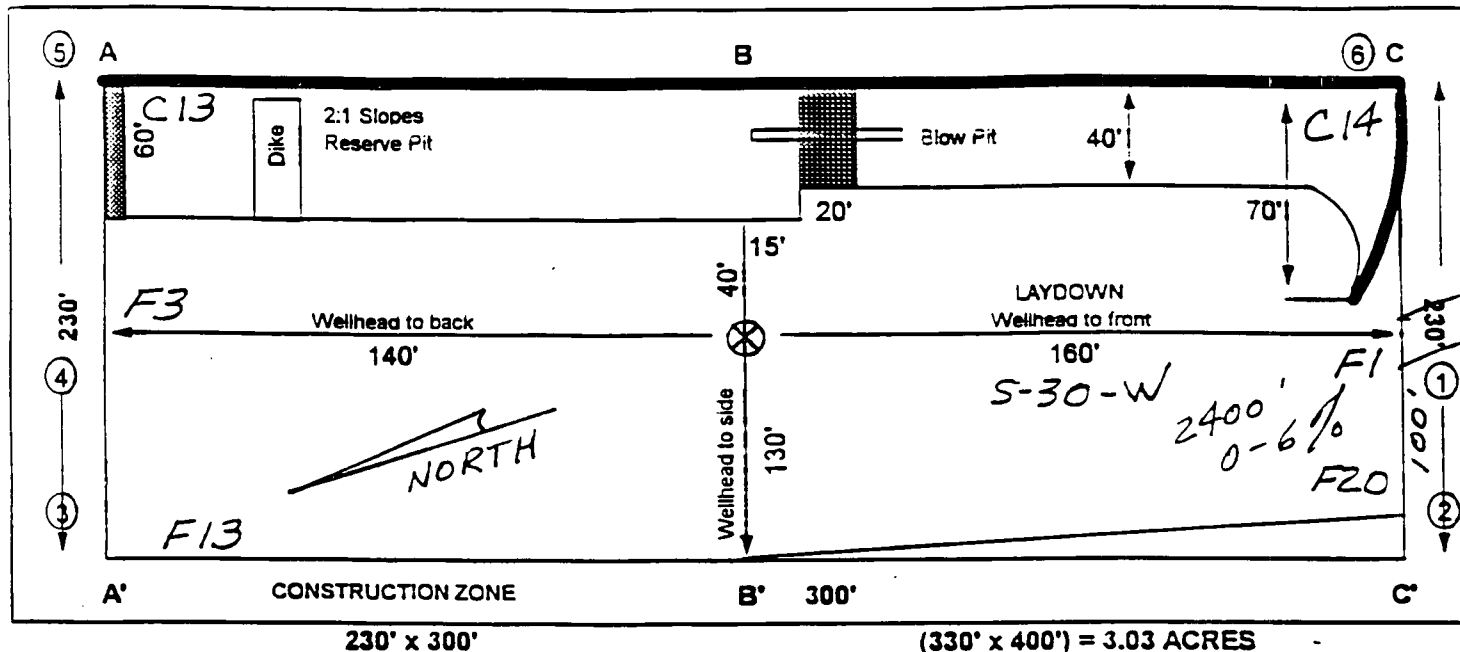
PLAT #1

ANTICIPATED
PRODUCTION FACILITIES
FOR A
MESA VERDE WELL

BURLINGTON RESOURCES

PLAT #1

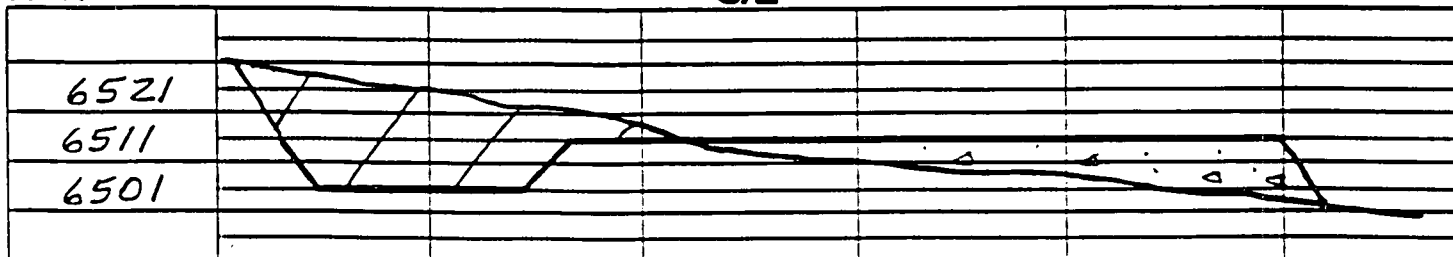
NAME: SAN JUAN 30-6 UNIT #61A
 FOOTAGE: 1410 FNL 910 FWL
 SEC 34 TWN 30 N.R. 6 W NMPM
 CO: RIO ARRIBA ST: N.M.
 ELEVATION: 6511' DATE: 11-15-96



Reserve Pit Dike: to be 6" above Deep side (overflow - 3' wide and 1' above shallow side).
 Blow Pit: overflow pipe halfway between top and bottom and to extend over plastic liner and into blow pit.

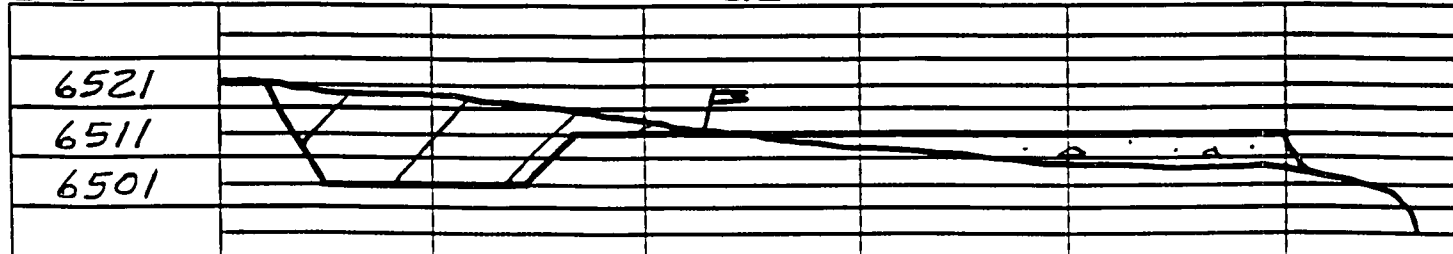
A - A'

C/L



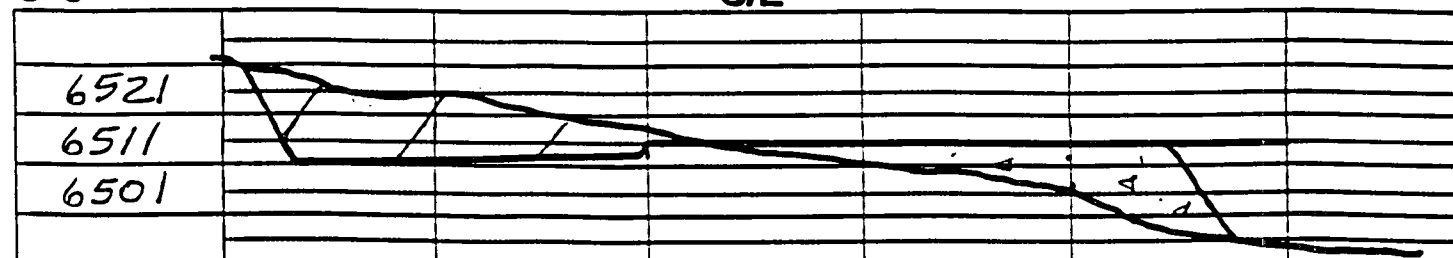
B - B'

C/L



C - C'

C/L

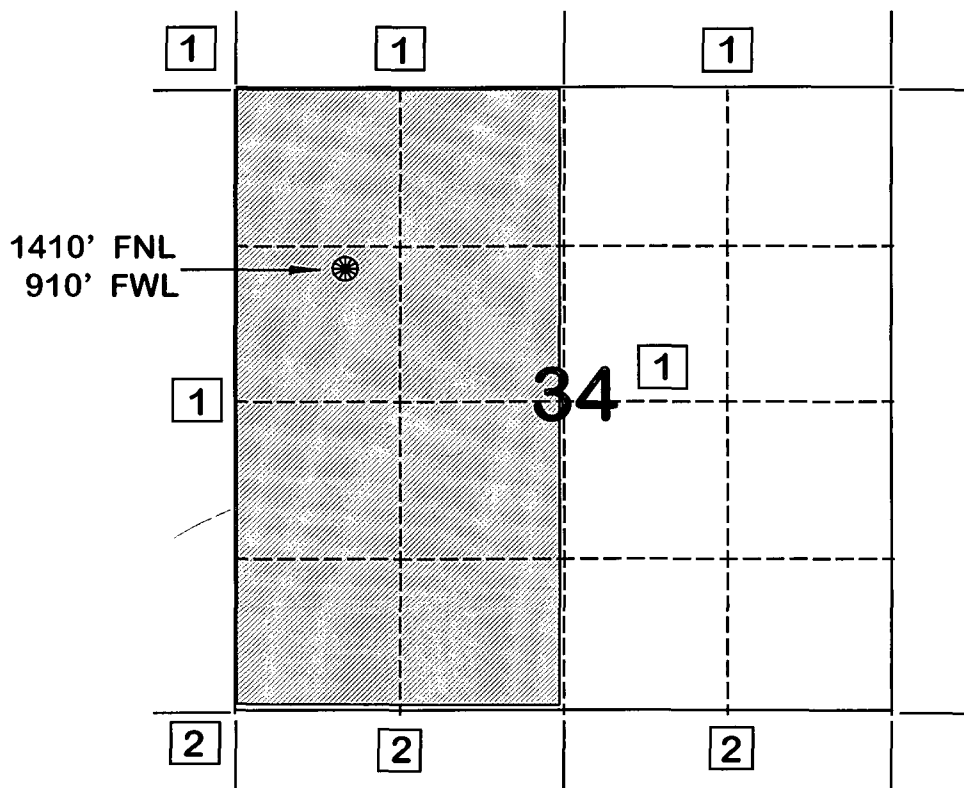


Note: Contractor should call One-Call for location of any marked or unmarked buried pipelines or cables.

BURLINGTON RESOURCES OIL AND GAS COMPANY

**SAN JUAN 30-6 UNIT #61A
OFFSET OPERATOR \ OWNER PLAT
Nonstandard Location
Mesaverde Formation Well**

Township 30 North, Range 6 West



- 1) Burlington Resources Oil and Gas Company
- 2) Phillips Petroleum Company
5525 Hwy. 64, NBU 3004
Farmington, NM 87401

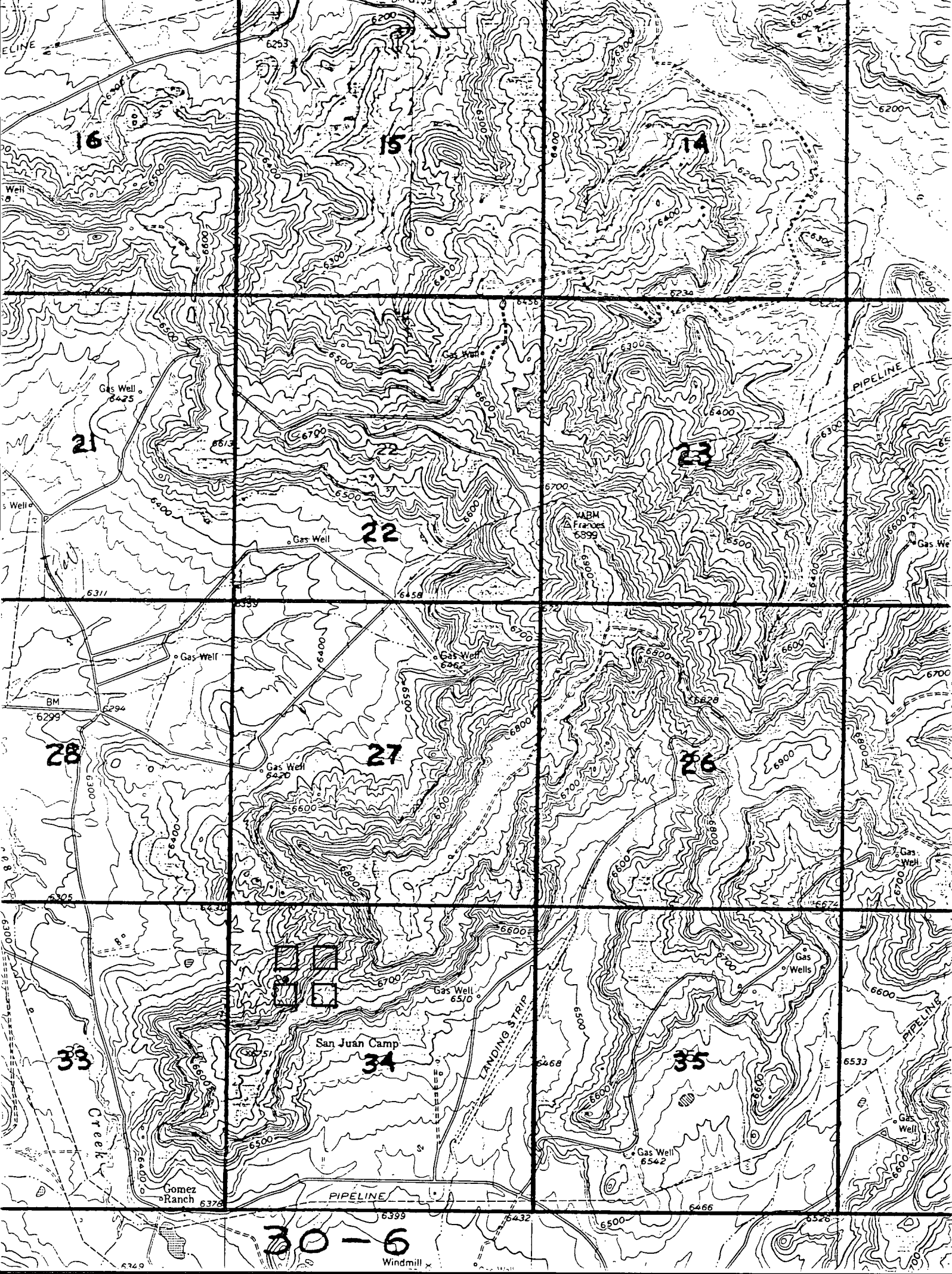
Re: San Juan 30-6 Unit #61A
1410'FNL, 910'FWL Section 34, T-30-N, R-6-W, Rio Arriba County, New Mexico
API # 30-039-(not yet assigned)

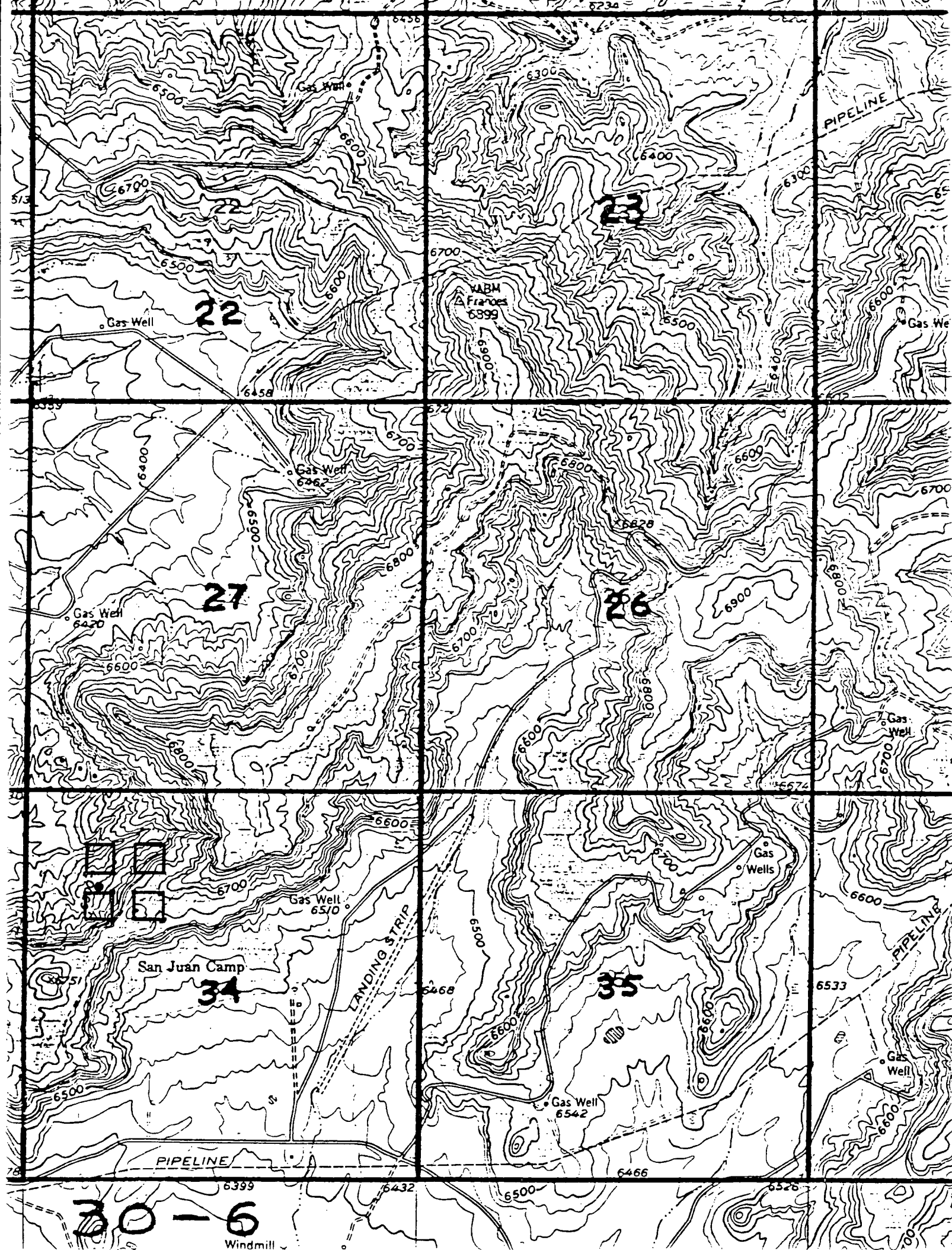
I hereby certify that the following offset operators/owners have been mailed notification of our application for non-standard location to drill the referenced well.

Phillips Petroleum
5525 Highway 64, NBU 3004
Farmington, NM 87401

A handwritten signature in cursive script, reading "Peggy Bradfield". The signature is written in black ink and is positioned above the printed name and title.

Peggy Bradfield
Regulatory/Compliance Administrator

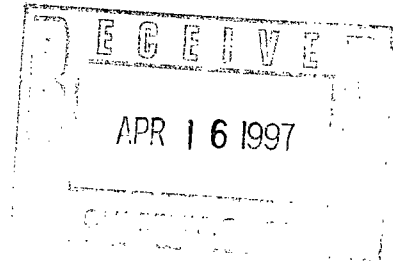






PHILLIPS PETROLEUM COMPANY

FARMINGTON, NEW MEXICO 87401
5525 HWY. 64 NBU 3004



April 14, 1997

Mr. William LeMay
New Mexico Oil Conservation Division
2040 South Pacheco
Santa Fe, New Mexico 87505

**RE: NON-STANDARD LOCATION WAIVER
SAN JUAN 30-6 UNIT #61A
NW/4 SECTION 34-T30N-R6W,
RIO ARriba COUNTY, NEW MEXICO
PHILLIPS' G.F. 5398**

Dear Mr. LeMay:

Please find enclosed one executed waiver for Burlington's proposed non-standard location for the #61A well.

Very truly yours,

Patrick H. Noah

Patrick H. Noah
Senior Land Specialist
San Juan Basin
(505) 599-3410

cc: w/attach: Burlington Resources Oil & Gas Company
Attn: Peggy Bradfield

CMD :
OG5SECT

ONGARD
INQUIRE LAND BY SECTION

06/30/97 10:40:22
OGOMES -EMF6
PAGE NO: 2

Sec : 34 Twp : 30N Rng : 06W Section Type : NORMAL

L 40.00 Fee owned U	K 40.00 Fee owned U	4 47 31.10 *** Fee owned U U	3 47 8.96 *** ***** NON STATE OWNERS U U
M 40.00 Fee owned U	N 40.00 Federal owned U A A	5 47 22.42 *** ***** NON STATE OWNERS U U	6 47 13.44 *** ***** NON STATE OWNERS U U A

PF01 HELP
PF07 BKWD

PF02
PF08 FWD

PF03 EXIT
PF09 PRINT

PF04 GoTo
PF10 SDIV

PF05
PF11

PF06
PF12

CMD :
OG5SECT

ONGARD
INQUIRE LAND BY SECTION

06/30/97 11:13:16
OGOMES -EMF6
PAGE NO: 1

Sec : 34 Twp : 30N Rng : 06W Section Type : NORMAL

D 40.00 Federal owned U	C 40.00 Federal owned U	B 40.00 Federal owned U	1 47 31.07 *** ***** NON STATE OWNERS U U
E 40.00 Federal owned U	F 40.00 Federal owned U	G 40.00 Federal owned U	2 47 13.46 *** Fee owned U U A A

M0002: This is the first page

PF01 HELP	PF02	PF03 EXIT	PF04 GoTo	PF05	PF06
PF07 BKWD	PF08 FWD	PF09 PRINT	PF10 SDIV	PF11	PF12