

NSL 2/16/98

**devon**

**ENERGY CORPORATION**

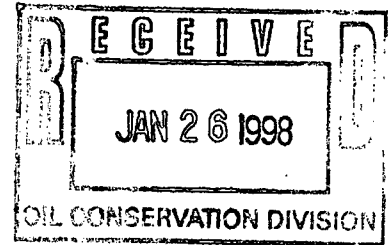
20 North Broadway, Suite 1500  
Oklahoma City, Oklahoma 73102-8260

Telephone 405/235-3611  
FAX 405/552-4550

January 23, 1998

**VIA OVERNIGHT DELIVERY**

*NSL -  
OIL SD6*



State of New Mexico  
Energy, Minerals and Natural Resources Department  
Oil Conservation Division  
2040 South Pacheco  
Santa Fe, New Mexico 87505

RE: Non-Standard Location Approval  
Carter Collier 5 Federal #3  
Eddy County, New Mexico

Gentlemen:

Devon Energy Corporation (Nevada) requests "Non-Standard Location" approval for the referenced well located as listed below. This unorthodox location is necessary due to the standard location being too close to the county road. (see attached topography map). The above referenced location is only 280' from the east proration unit boundary, but is 530' from the nearest lease line. All ownership (minerals and working interest) of the east offsetting proration unit (unit "H") are the same.

<u>Well Name &amp; No.</u>	<u>Unit Ltr</u>	<u>Section-T-R</u>	<u>Footage Location</u>
Carter Collier 5 Federal #3	G	5-18S-27E	2110' FNL & 1600' FEL

Enclosed is a map of the West Red Lake Area showing the well's location and a copy of form C-102.

Operators having wells and/or lease holdings in the offsetting 40 acre tracts will be notified by certified mail. Copies of our letters of notification to the following operators are enclosed.

SDX  
Yates Petroleum Co.

Midland, Texas  
Artesia, New Mexico

Carter Collier 5 Federal #3  
NSL Approval  
January 23, 1998  
Page Two

State of New Mexico  
Energy, Minerals and Natural Resources Dept.  
Oil Conservation Division

If you have any questions, please contact the undersigned at (405) 235-3611, X4509.

Sincerely yours,

DEVON ENERGY CORPORATION (NEVADA)

A handwritten signature in black ink, reading "E.L. Buttross Jr.", with a stylized flourish at the end.

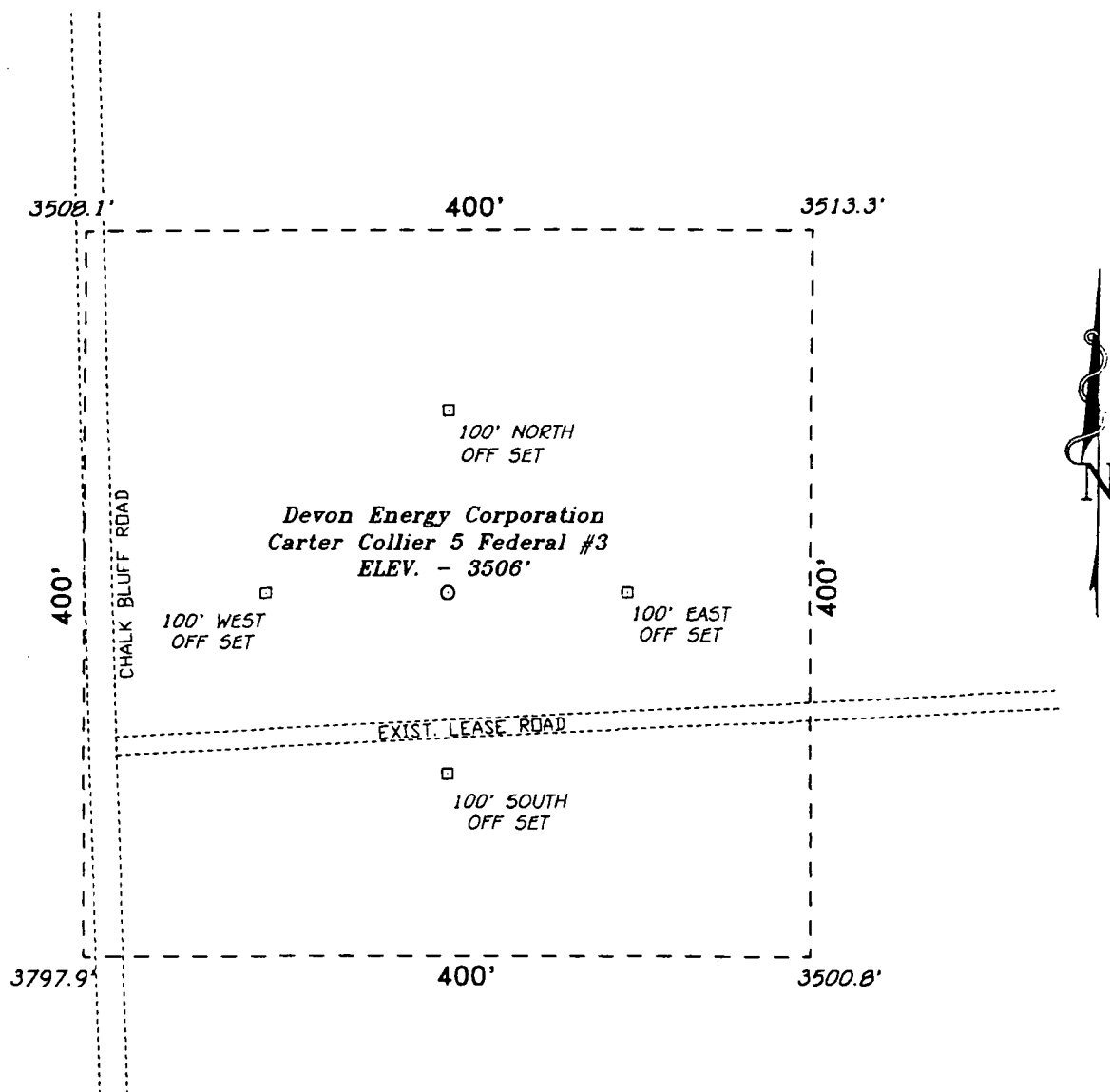
Mr. E.L. Buttross, Jr.  
District Engineer

ELB\dk  
Enclosures

cc: Oil Conservation Division - Artesia, NM  
Bureau of Land Management - Carlsbad, NM



SECTION 5, TOWNSHIP 18 SOUTH, RANGE 27 EAST, N.M.P.M.,  
EDDY COUNTY, NEW MEXICO.



100 0 100 200 FEET

SCALE: 1" = 100'

**Devon Energy Corporation**

REF: Carter Collier 5 Federal No. 3 / Well Pad Topo

THE CARTER COLLIER 5 FEDERAL No. 3 LOCATED 2110' FROM  
THE NORTH LINE AND 1600' FROM THE EAST LINE OF  
SECTION 5, TOWNSHIP 18 SOUTH, RANGE 27 EAST,  
N.M.P.M., EDDY COUNTY, NEW MEXICO.

**BASIN SURVEYS** P.O. BOX 1786 - HOBBS, NEW MEXICO

W.O. Number: 7576

Drawn By: S.C. NICHOLS

Date: 11-04-97

Disk: SCN #39 - 7576HH.DWG

Survey Date: 10-30-97

Sheet 1 of 1 Sheets

DISTRICT I  
P.O. Box 1980, Hobbs, NM 88240

State of New Mexico  
Energy, Minerals and Natural Resources Department

Form C-102  
Revised February 10, 1994  
Instruction on back  
Submit to Appropriate District Office  
State Lease - 4 Copies  
Fee Lease - 3 Copies

DISTRICT II  
P.O. Drawer DD, Artesia, NM 88210

## OIL CONSERVATION DIVISION

DISTRICT III  
1000 Rio Brazos Rd., Aztec, NM 87410

P.O. Box 2088  
Santa Fe, New Mexico 87504-2088

☐ AMENDED REPORT

## WELL LOCATION AND ACREAGE DEDICATION PLAT

API Number	Pool Code	Pool Name Red Lake (Q-GB-SA)
Property Code	Property Name Carter Collier 5 Federal	Well Number 3
OGRID No.	Operator Name Devon Energy Corporation	Elevation 3506'

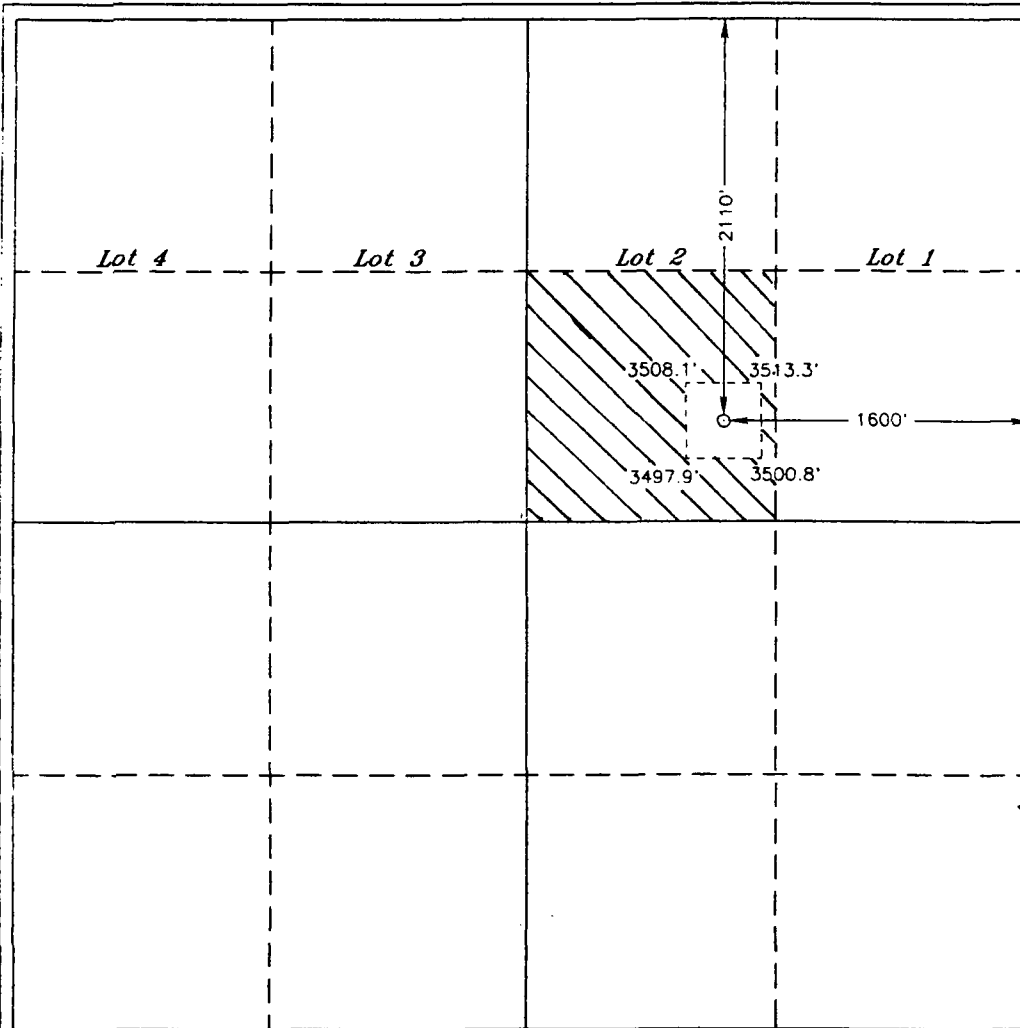
## Surface Location

UL or lot No.	Section	Township	Range	Lot Idn	Feet from the	North/South line	Feet from the	East/West line	County
G	5	18 S	27 E		2110	North	1600	East	Eddy

## Bottom Hole Location If Different From Surface

UL or lot No.	Section	Township	Range	Lot Idn	Feet from the	North/South line	Feet from the	East/West line	County
Dedicated Acres 40	Joint or Infill	Consolidation Code	Order No.						

NO ALLOWABLE WILL BE ASSIGNED TO THIS COMPLETION UNTIL ALL INTERESTS HAVE BEEN CONSOLIDATED  
OR A NON-STANDARD UNIT HAS BEEN APPROVED BY THE DIVISION



## OPERATOR CERTIFICATION

I hereby certify the the information  
contained herein is true and complete to the  
best of my knowledge and belief.

*E.L. Buttross, Jr.*  
Signature

E.L. Buttross, Jr.

Printed Name

District Engineer

Title

November 14, 1997

Date

## SURVEYOR CERTIFICATION

I hereby certify that the well location shown  
on this plat was plotted from field notes of  
actual surveys made by me or under my  
supervision, and that the same is true and  
correct to the best of my belief.

October 30, 1997

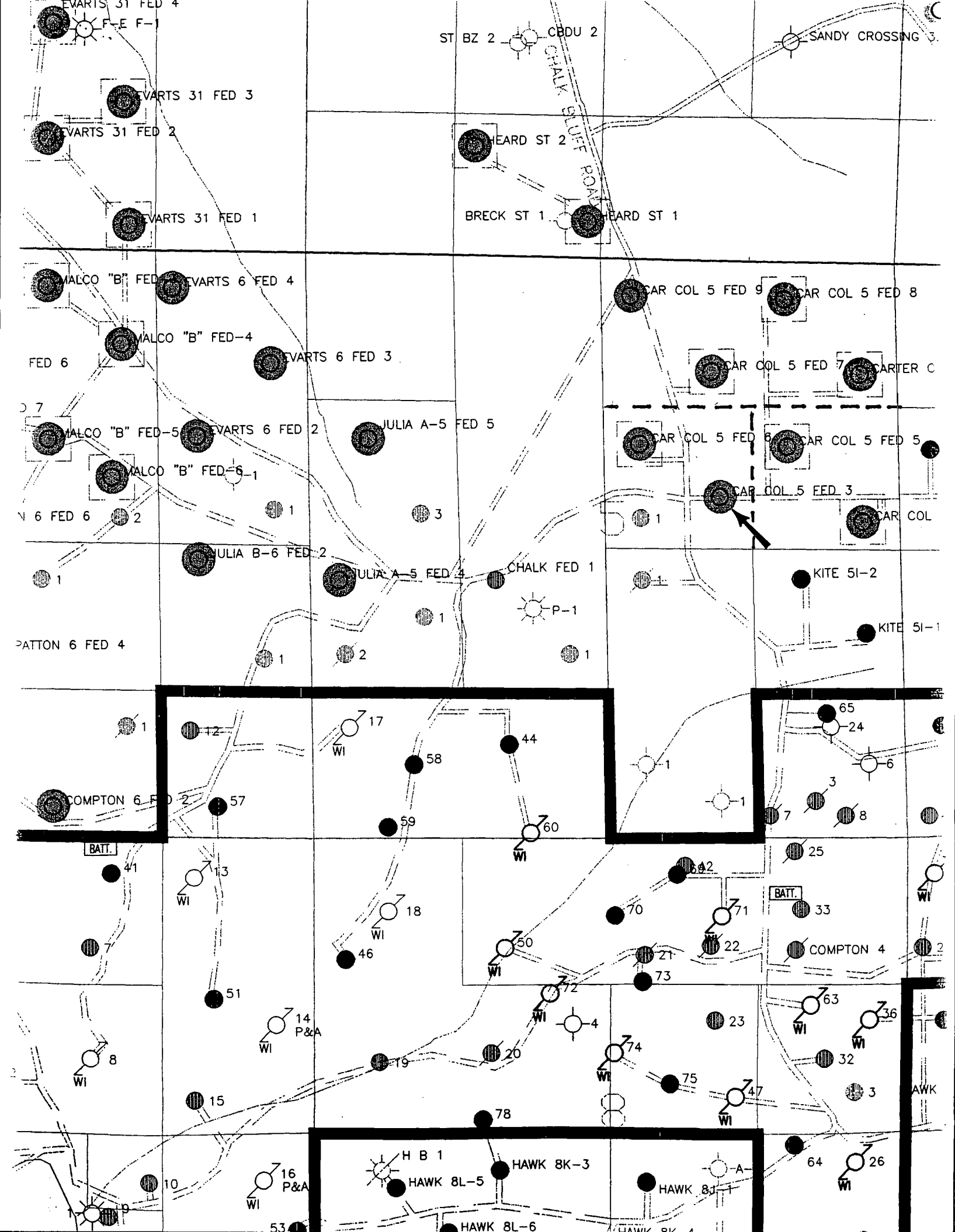
Date Surveyed

Signature & Seal of  
Professional Surveyor

W.O. No. 7576h

Certificate No. Gary L. Jones, 1977

BASIN SURVEYS





ENERGY CORPORATION

20 North Broadway, Suite  
1500  
Oklahoma City, Oklahoma  
73102-8260

Telephone 405/235-  
3611  
FAX 405/552-4550

January 23, 1998

**Certified Mail No. P 397 639 528**

Yates Petroleum  
105 South Fourth  
Artesia, NM 88210

RE: Non-Standard Location Approval  
Proposed 2800' San Andres Test  
Carter Collier 5 Federal #3  
2110' FNL & 1600' FEL  
Sec. G-5-18S-27E  
Eddy County, New Mexico

Gentlemen:

Devon Energy Corporation (Nevada) has applied for "Non-Standard Location" approval for the referenced well. This unorthodox location is necessary due to the standard location being too close to the county road. (see attached topography map). The above referenced location is only 280' from the east proration unit boundary, but is 530' from the nearest lease line. The proposed wellsite offsets the following property which our records indicate you operate in Section 5-T18S-R27E.

Choque AMX Federal #1

Carter Collier 5 Federal #3  
Non-Standard Location Approval  
January 23, 1998  
Page Two

Yates Petroleum

The NMOCD Non-Standard Location Approval process requires that we notify offset operators and submit Proof of Notice.

Please accept this certified letter as notification. If you have any questions, please contact Ernie Buttross, Jr., at (405) 235-3611, X4509.

Sincerely yours,

DEVON ENERGY CORPORATION (NEVADA)

A handwritten signature in cursive script, reading "Diana Keys".

Diana Keys  
Engineering Tech.

/dk

cc: Oil Conservation Division - Santa Fe, NM  
Oil Conservation Division - Artesia, NM  
Bureau of Land Management - Carlsbad, NM





ENERGY CORPORATION

20 North Broadway, Suite  
1500  
Oklahoma City, Oklahoma  
73102-8260

Telephone 405/235-  
3611  
FAX 405/552-4550

January 23, 1998

**Certified Mail No. Z 397 639 529**

SDX  
511 West Ohio  
Suite 601  
Midland, TX 79701

RE: Non-Standard Location Approval  
Proposed 2800' San Andres Test  
Carter Collier 5 Federal #3  
2110' FNL & 1600' FEL  
Section G-5-T18S-R27E  
Eddy County, New Mexico

Gentlemen:

Devon Energy Corporation (Nevada) has applied for "Non-Standard Location" approval for the referenced well. This unorthodox location is necessary due to the standard location being too close to the county road. (see attached topography map). The above referenced location is only 280' from the east proration unit boundary, but is 530' from the nearest lease line. The proposed wellsite offsets the following property which our records indicate you operate in Section 5-T18S-R27E.

Chalk Federal #1  
Chalk Bluff Draw Unit #1

The NMOCD Non-Standard Location Approval process requires that we notify offset lease holders and submit Proof of Notice.

Carter Collier 5 Federal #3  
Non-Standard Location Approval  
January 23, 1998  
Page Two

SDX

Please accept this certified letter as notification. If you have any questions, please contact Ernie Buttross, Jr., at (405) 235-3611, X4509.

Sincerely yours,

DEVON ENERGY CORPORATION (NEVADA)

A handwritten signature in cursive script that reads "Diana Keys".

Diana Keys  
Engineering Tech.

/dk

cc: Oil Conservation Division - Santa Fe, NM  
Oil Conservation Division - Artesia, NM  
Bureau of Land Management - Carlsbad, NM

~~Exxon~~

ARTS 31 FEB 1964

Fred Turner

RTS 6 FEB 3

SDX  
Resources

Two-part

SDX

821

**THE**

Print

CO. "B" - EFF

CO "BEE"

**CMAA**

[illegible]

Dyn-100%

CO  
E  
F  
F  
I  
C  
I  
E  
N  
T

~~Althra~~

STER COLLIER 5 FEB 4

1997

KITE 4E-3

1. The first step is to identify the problem or question that needs to be answered. This involves understanding the context and the specific requirements of the task.



KITE 4F-4

مجلس شورای اسلامی

DvN-10070

DEF  
H

KITE 51-2



Dvn-1001

Alfred B.

1

0



\_\_\_\_\_

Q

✓

AMPTON 33 FEB 1



ARTS 31 FED 4  
F-1

Exxon

ST BZ 2  
CBDU 2

Exxon

SANDY CROSSING 32-1  
EVARTS FED 2

EVARTS 33 FED 1  
COMPTON 33 FED 1

irt

EVARTS 31 FED 3

ARTS 31 FED 2

Fred  
Turner

EVARTS 31 FED 1

HEARD ST 2

Dvn-part

BRECK ST 1  
HEARD ST 1

Nearburg

CO "B" FED 3  
EVARTS 6 FED 4

Dvn-part

MALCO "B" FED-4

EVARTS 6 FED 3

100%

EVARTS FED  
45.228125%  
38.62482%

LCO "B" FED-5  
EVARTS 6 FED 2

MALCO "B" FED-6-1

JULIA "A" FED  
86.28333%  
80.15714%

JULIA A-5 FED 5

Dvn-part

JULIA B-6 FED 2

JULIA "B" FED  
86.28333%  
84.47138%

CHALK FED 1  
(Inactive)

P-1

Chalk Bluff  
Draw 111  
(Inactive)

N FED  
0%  
5%

12

17

44

58

Dvn-part

COMPTON 6 FED 2

57

59

SDX  
Resources

CAR COL 5 FED 9  
CARTER COLLIER FED

79.42500%  
73.38870%

CAR COL 5 FED 7  
CARTER COLLIER 5 FED 4

Dvn-part

CAR COL 5 FED 6  
CAR COL 5 FED 5

CAR COL 5 FED 3

CAR COL 5 FED 2

LC-064384

Choque Amx  
Federal #1  
(Inactive)

Yates

KITE 5I-2

KITE 5I-1

Arco

Dvn-100%

65

24

3

7

8

1

5

45

43

76

30

27

L-5

L-6

Altura

CAR COL 5 FED 8

CARTER COLLIER 5 FED 4

KITE 4E-1

FED 1  
KITE 4E-2

KITE 4F-4

COL 5 FED 2

Dvn-100%

Altura/Bu

1-Windfohr Fed

2-Wi

K-7

3-Windfohr Fed

1-Wi

L-;

2-Wi

Altura

EAGLE 33N-9

Dvn-100%

EAGLE 33N-10

Dvn-

EAGLE 330-11

EAGLE 3

HONDO 4  
MANN

Dvn-

HONDO

HONDO 6

H FED 1



