



NEW MEXICO ENERGY, MINERALS and NATURAL RESOURCES DEPARTMENT

BILL RICHARDSON

Governor

Joanna Prukop

Cabinet Secretary

November 10, 2003

IPI-213

Lori Wrotenbery

Director

Oil Conservation Division

Westall Oil & Gas, Inc.
Post Office Box 4
Loco Hills, New Mexico 88255

Attn: Randall Harris

**RE: Injection Pressure Increase
Forehand Well No. 3
Eddy County, New Mexico**

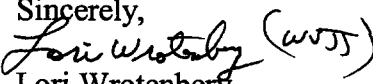
Dear Mr. Harris:

Reference is made to your request to the New Mexico Oil Conservation Division (Division) received November 3, 2003, to increase the surface injection pressure on the subject well. This request is based on a step rate test conducted on September 30, 2003. Results of this test have been reviewed and we feel an increase in injection pressure on this well is justified at this time.

You are hereby authorized to inject water up to the following maximum surface tubing pressure.

Well and Location	Maximum Surface Injection Pressure
Forehand Well No. 3 (API:30-015-22192)	800 PSIG
This well is located in Section 15, Township 23 South, Range 27 East, Eddy County, New Mexico.	

The Division Director may rescind this injection pressure increase if it becomes apparent that the injected water is not being confined to the injection zone or is endangering any fresh water aquifers.

Sincerely,

Lori Wrotenbery
Director

LW/wvj

cc: Oil Conservation Division - Hobbs

File: 2003-PSI-X;

File SWD-719

9/4/03 N/A JPF L/R WVS 212033088 835065 IPI



Westall Oil & Gas, Inc.

WVS

Independent Oil Producer

Post Office Box 4

Loco Hills, New Mexico 88255

PH. 505-677-2370 • FAX 505-677-2361

RECEIVED

NOV 03 2003

Oil Conservation Division

1220 S. St. Francis Dr.

Santa Fe, Nm 88240

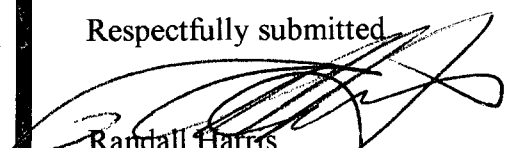
**OIL CONSERVATION
DIVISION**

Re: Step Rate Test
Ray Westall Operating
Forehand #3
SWD-719

Gentlemen:

Enclosed are the results of the Step Rate Test performed on 9/30/03 on the captioned well. We request a pressure increase based on the test.

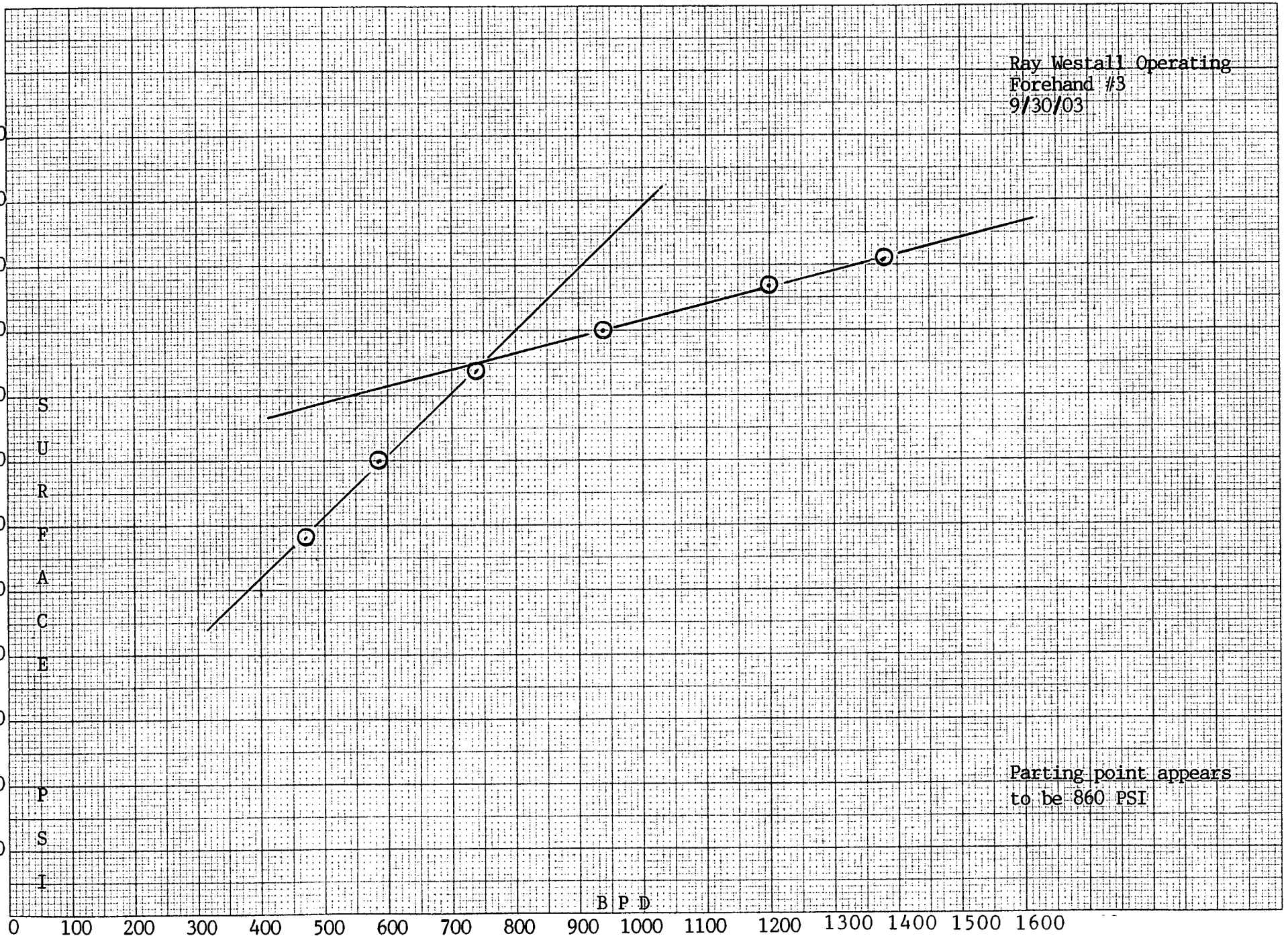
Respectfully submitted


Randall Harris
Geologist

Step Rate Test

[illegible]

Ray Westall Operating
Forehand #3
9/30/03



B P D

Parting point appears
to be 860 PSI