

1R - 428-75

**GENERAL
CORRESPONDENCE**

YEAR(S):
2008

Hansen, Edward J., EMNRD

From: Dale Littlejohn [dale@rthicksconsult.com]
Sent: Monday, October 13, 2008 10:05 AM
To: Hansen, Edward J., EMNRD; Johnson, Larry, EMNRD
Cc: Lara Weinheimer; Katie
Subject: ROC Characterization of 5 Hobbs SWD Sites (1R428-52/53/59/64/75)
Attachments: ROC October 22, 2008 Scope of Work.pdf

Please accept this email as notice of our intentions to conduct further site characterization drilling activities, as proposed in our April 4, 2008 ICP (approved 5/22/08), at 5 Rice Operating Hobbs SWD sites beginning at 8:00 AM on Wednesday October 22, 2008. The sites are all located in or to the west of the city of Hobbs.

A scope of work with driving directions for each site is provided on the attached PDF file. We anticipate that the activities will be completed in two to three days. Please call me if you have any questions or require additional information.

Thanks,

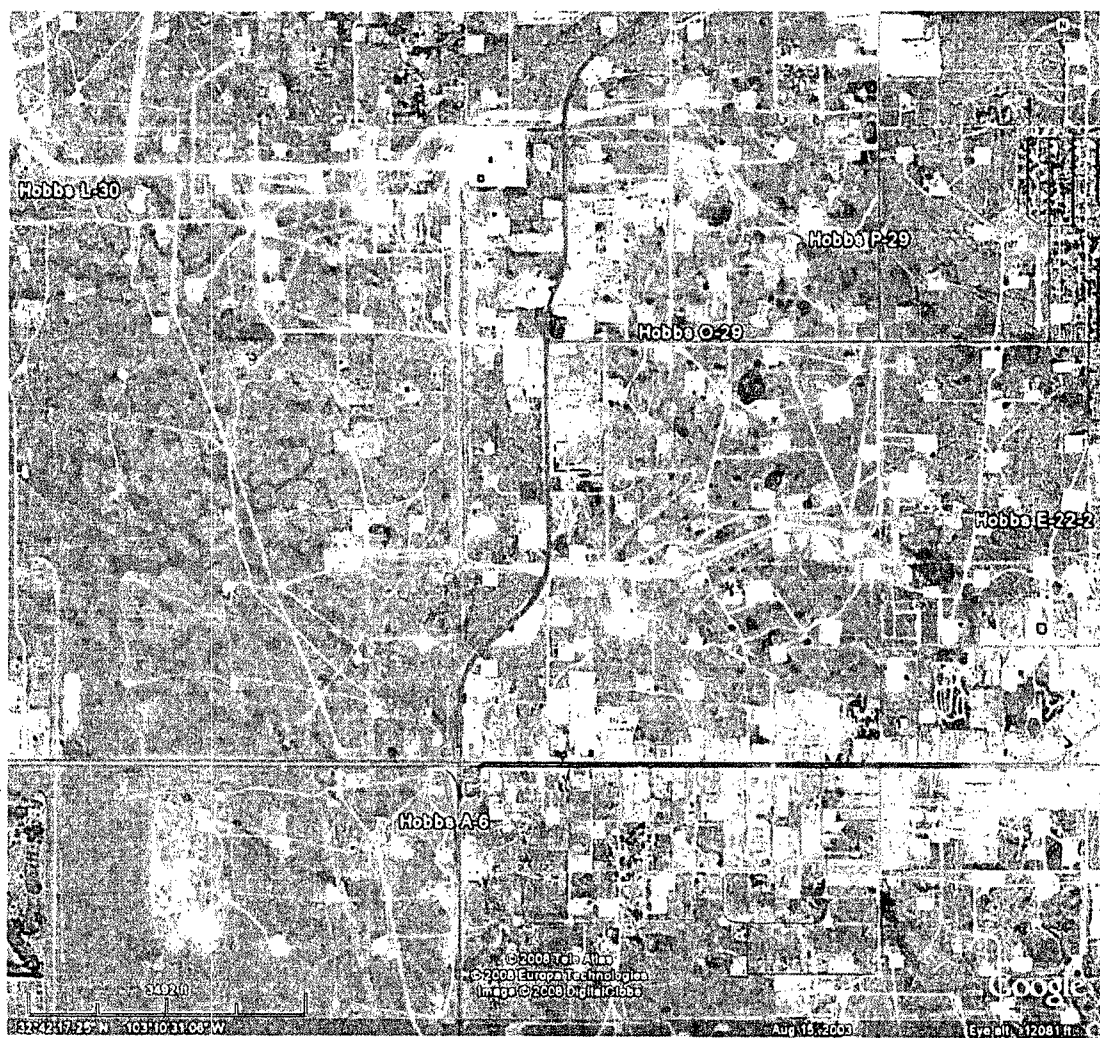
Dale T Littlejohn, PG
R T Hicks Consultants Ltd
(432) 528-3878 (office)
(432) 689-4578 (fax)

This inbound email has been scanned by the MessageLabs Email Security System.

10/15/2008

Scope of Work (October 22-24, 2008)
Rice Operating Company Hobbs Disposal System
Five Vent / Junction Box Sites near Hobbs, NM

Scope-of-Work: At each site, 1 to 2 soil borings will be installed as depicted on the attached plates. The purpose for each boring is to provide further vertical delineation of hydrocarbon and/or chloride-impacted soil that was identified during the initial investigation. Soil samples will be recovered with a split-spoon sampler for field screening and laboratory analysis at the field technician's discretion. If the soil has been impacted by chloride only, then the samples may be recovered from cuttings. These activities are being conducted according to the Initial Characterization Plan submitted to the NMOCD on April 4, 2008 and approved on May 22, 2008.



Hobbs P-29 (T-18-S, R-38-E, Section 29, Unit P) Driving Directions: From the intersection of West County Road and West Sanger Street in Hobbs, travel east 0.4 on West Sanger Street. Turn north on the lease road and travel 0.1 miles. Turn right and travel east 0.1 miles past the battery pad. The site is on the right hand side of the lease road.

Hobbs A-6 (T-18-S, R-38-E, Section 6, Unit A) Driving Directions: From intersection of Marland and West County Road travel west 0.1 miles and turn south at yellow cattle guard. Travel 0.3 miles on the southwest lease road. Site is just east of windmill.

Hobbs E-22-2 (T-18-S, R-38-E, Section 22, Unit E) Driving Directions: From the intersection of West Sanger Street and French Road, go south on the lease road 0.4 miles. Turn east and go 0.1 miles to the end of the battery yard. Turn right and go south 250 feet to the site.

Hobbs L-30 (T-18-S, R-38-E, Section 30, Unit L) Driving Directions: From the intersection of Marland and West County Road, go west on Marland for 1 mile. Turn right by Basic Tool and travel north 1.3 miles to a "T" intersection. Turn right and go east 0.1 miles. The site is on the left side of the road across from the Latigo tank battery.

Hobbs O-29-1 (T-18-S, R-38-E, Section 29, Unit O) Driving Directions: From the intersection of West Sanger Street and West County Road, go east on West Sanger Street 0.5 miles to the fenced excavation on the north side of the road.

1R428-75

Tank Battery

Verification Soil Samples July 15, 2008		
Loc. / Depth	Cl (mg/kg)	
5-Ft E (11')	256	
5-Ft E (12')	144	
5-Ft W (11')	608	
5-Ft W (12')	928	
10-Ft W (4')	1,570	
10-Ft W (12')	880	
5-Ft N (10')	928	
5-Ft N (12')	288	
5-Ft S (5')	1,620	
5-Ft S (12')	960	
10-Ft S (5')	1,900	
10-Ft S (12')	1,220	
15-Ft S (5')	1,920	
15-Ft S (10')	1,180	
20-Ft S (6')	1,800	
20-Ft S (10')	720	

5 Feet North of Pit Center July 15, 2008		
Depth (feet)	Chloride (mg/kg)	PID (ppm)
1.0	123	0
2.0	113	0.2
3.0	147	0.2
4.0	241	0.3
5.0	363	0.5
6.0	651	1.0
7.0	353	1.2
8.0	371	2.5
9.0	535	4.5
10.0	694	8.6
11.0	511	8.1
12.0	302	11.1

Center of Excavation December 19, 2002	
Depth (feet)	Chloride (mg/kg)
4.0	135
5.0	181
8.0	360
11.0	1,111
13.0	1,062

10 Ft West of Center July 16, 2008	
Depth (feet)	Chloride (mg/kg)
1.0	472
2.0	453
3.0	267
4.0	1,386
5.0	472
6.0	577
7.0	729
8.0	876
9.0	871
10.0	1,136
11.0	912
12.0	655

5 Feet West of Pit Center July 15, 2008	
Depth (feet)	Chloride (mg/kg)
1.0	123
2.0	113
3.0	147
4.0	241
5.0	363

5 Feet East of Pit Center July 15, 2008		
Depth (feet)	Chloride (mg/kg)	PID (ppm)
6.0	115	0.3
7.0	176	0
8.0	258	0
9.0	255	0
10.0	208	0.1
11.0	291	0
12.0	206	0.2

ROC Pipeline

5 Feet South of Pit Center July 16, 2008		
Depth (feet)	Chloride (mg/kg)	PID (ppm)
1.0	145	0
2.0	610	0.7
3.0	736	0.2
4.0	1,102	0.1
5.0	1,378	0
6.0	1,145	0
7.0	1,215	0
8.0	1,252	0
9.0	897	0
10.0	632	0
11.0	608	0.2
12.0	879	0

10 Ft South of Center July 16, 2008	
Depth (feet)	Chloride (mg/kg)
1.0	116
2.0	260
3.0	710
4.0	1,110
5.0	1,742
6.0	1,432
7.0	1,217
8.0	1,332
9.0	818
10.0	1,019
11.0	929
12.0	983

15 Ft South of Center July 16, 2008	
Depth (feet)	Chloride (mg/kg)
1.0	148
2.0	446
3.0	265
4.0	1,677
5.0	3,395
6.0	1,155
7.0	1,406
8.0	1,135
9.0	1,022
10.0	1,010

20 Ft South of Center July 16, 2008	
Depth (feet)	Chloride (mg/kg)
1.0	351
2.0	566
3.0	1,153
4.0	1,245
5.0	1,368
6.0	1,371
7.0	1,177
8.0	960
9.0	910
10.0	662

E-33-2
Junction
Excavation

Oil Barbed-wire Fence

Proposed Soil
Boring Location

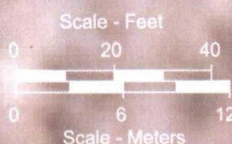


Plate 1
Site Detail Map
Rice Operating Company
Hobbs E-33-2 Junction
T-18-S R-38-E Sec. 33 (E)
Lea County, New Mexico