

ABOVE THIS LINE FOR DIVISION USE ONLY

NEW MEXICO OIL CONSERVATION DIVISION
 - Engineering Bureau -
 1220 South St. Francis Drive, Santa Fe, NM 87505



COG Operating LLC
 Skelly Unit # 986
 5961

ADMINISTRATIVE APPLICATION CHECKLIST

THIS CHECKLIST IS MANDATORY FOR ALL ADMINISTRATIVE APPLICATIONS FOR EXCEPTIONS TO DIVISION RULES AND REGULATIONS WHICH REQUIRE PROCESSING AT THE DIVISION LEVEL IN SANTA FE

Application Acronyms:

- [NSL-Non-Standard Location] [NSP-Non-Standard Proration Unit] [SD-Simultaneous Dedication]
- [DHC-Downhole Commingling] [CTB-Lease Commingling] [PLC-Pool/Lease Commingling]
- [PC-Pool Commingling] [OLS - Off-Lease Storage] [OLM-Off-Lease Measurement]
- [WFX-Waterflood Expansion] [PMX-Pressure Maintenance Expansion]
- [SWD-Salt Water Disposal] [IPI-Injection Pressure Increase]
- [EOR-Qualified Enhanced Oil Recovery Certification] [PPR-Positive Production Response]

2008 OCT 14 AM 11 30

RECEIVED

- [1] **TYPE OF APPLICATION** - Check Those Which Apply for [A]
- [A] Location - Spacing Unit - Simultaneous Dedication
 NSL NSP SD
- Check One Only for [B] or [C]
- [B] Commingling - Storage - Measurement
 DHC CTB PLC PC OLS OLM
- [C] Injection - Disposal - Pressure Increase - Enhanced Oil Recovery
 WFX PMX SWD IPI EOR PPR
- [D] Other: Specify _____
- [2] **NOTIFICATION REQUIRED TO:** - Check Those Which Apply, or Does Not Apply INTERESTS ARE THE SAME
- [A] Working, Royalty or Overriding Royalty Interest Owners
- [B] Offset Operators, Leaseholders or Surface Owner
- [C] Application is One Which Requires Published Legal Notice
- [D] Notification and/or Concurrent Approval by BLM or SLO
U.S. Bureau of Land Management - Commissioner of Public Lands, State Land Office
- [E] For all of the above, Proof of Notification or Publication is Attached, and/or,
- [F] Waivers are Attached
- [3] **SUBMIT ACCURATE AND COMPLETE INFORMATION REQUIRED TO PROCESS THE TYPE OF APPLICATION INDICATED ABOVE.**
- [4] **CERTIFICATION:** I hereby certify that the information submitted with this application for administrative approval is **accurate** and **complete** to the best of my knowledge. I also understand that **no action** will be taken on this application until the required information and notifications are submitted to the Division.

Note: Statement must be completed by an individual with managerial and/or supervisory capacity.

ROBYN M. ODOM
 Print or Type Name

Robyn Odom
 Signature

AGENT
 Title

10/16/08
 Date

rodom@conchoresources.com
 e-mail Address

**Skelly Unit #986
Eddy County, NM**

Fren; Glorieta Yeso oil well
TD of approximately 6600'

Non-standard location due to sand dunes

1650' FNL & 1550' FWL Sec 22, T17S, R31E, Unit F

The plan for this well is to complete it in the Yeso formation.
We won't know the exact perms until we drill & log it, but it will be similar to the

Willow State #8
330 FSL & 1650 FEL, Section 16, T17S, R31E, UL O
drilled in March 2006

The Willow State #8 Yeso completion has overall perforations from 5380.5' – 5845.5', but is divided into 2 perf/stimulation intervals. At this time, we assume the Skelly Unit 986 will be very similar.

1st Interval: 5650' – 5845.5', 67 total holes.
acidized w/ 2265 gals acid,
frac'd w/ 8000# LiteProp, 30,000 gals 30# gel, 54,663 gals 40# gel, & 90,560#
16/30 sand

2nd Interval: 5380.5' – 5544', 56 total holes.
acidized w/ 2550 gals acid,
frac'd w/ 8006# LiteProp, 30,000 gals 30# gel, 53,000 gals 40# gel, & 91,740#
16/30 sand

Attachment 1

Plat and map

Attachment 2

Map and legend of offset wells.

Attachment 3

Updated land plat showing that COG owns offset acreage.
The acreage we are encroaching on is the SW/4 of the NW/4 of Section 22.
COG Operating LLC owns all of Section 22.
Interests are common.

COG Operating LLC respectfully requests permission to have this NSL approved.

DISTRICT I
1625 N. French Dr., Hobbs, NM 88240

State of New Mexico
Energy, Minerals and Natural Resources Department

Form C-102

DISTRICT II
1301 W. Grand Avenue, Artesia, NM 88210

OIL CONSERVATION DIVISION
1220 SOUTH ST. FRANCIS DR.
Santa Fe, New Mexico 87505

Revised October 12, 2005
Submit to Appropriate District Office
State Lease - 4 Copies
Fee Lease - 3 Copies

DISTRICT III
1000 Rio Brazos Rd., Aztec, NM 87410

WELL LOCATION AND ACREAGE DEDICATION PLAT

AMENDED REPORT

API Number 30-015-36446	Pool Code 26770	Pool Name GLORIETA-YESO
Property Code 305607	Property Name SKELLY UNIT	Well Number 986
OGRID No. 229137	Operator Name COG OPERATING, LLC	Elevation 3836'

Surface Location

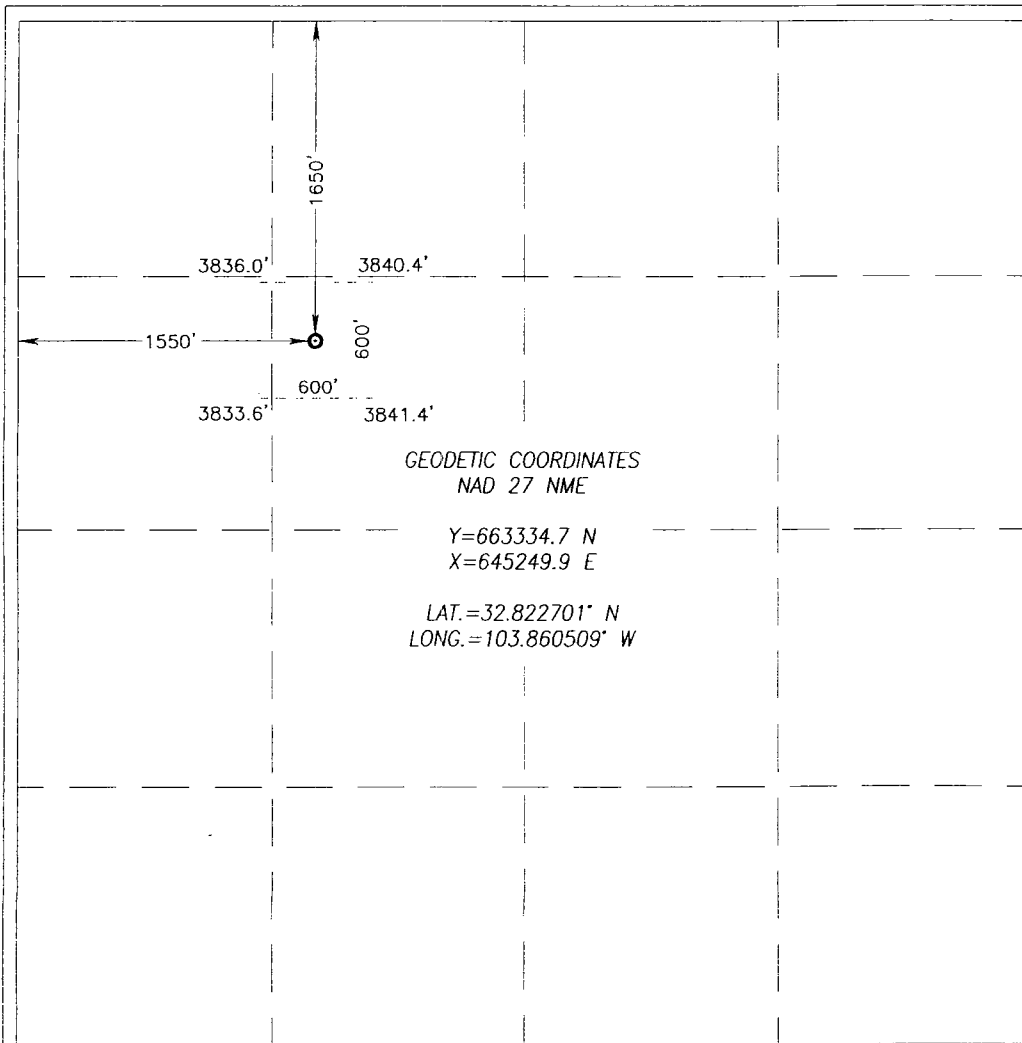
UL or lot No.	Section	Township	Range	Lot Idn	Feet from the	North/South line	Feet from the	East/West line	County
F	22	17-S	31-E		1650	NORTH	1550	WEST	EDDY

Bottom Hole Location If Different From Surface

UL or lot No.	Section	Township	Range	Lot Idn	Feet from the	North/South line	Feet from the	East/West line	County

Dedicated Acres 40	Joint or Infill	Consolidation Code	Order No.
-----------------------	-----------------	--------------------	-----------

NO ALLOWABLE WILL BE ASSIGNED TO THIS COMPLETION UNTIL ALL INTERESTS HAVE BEEN CONSOLIDATED
OR A NON-STANDARD UNIT HAS BEEN APPROVED BY THE DIVISION



OPERATOR CERTIFICATION

I hereby certify that the information herein is true and complete to the best of my knowledge and belief, and that this organization either owns a working interest or unleased mineral interest in the land including the proposed bottom hole location or has a right to drill this well at this location pursuant to a contract with an owner of such mineral or working interest, or to a voluntary pooling agreement or a compulsory pooling order heretofore entered by the division.

Robyn Odom 10/09/2008
Signature Date

Robyn Odom
Printed Name

SURVEYOR CERTIFICATION

I hereby certify that the well location shown on this plat was plotted from field notes of actual surveys made by me or under my supervision, and that the same is true and correct to the best of my belief.

Date Surveyed: 10/09/2008
Signature & Seal of Professional Surveyor

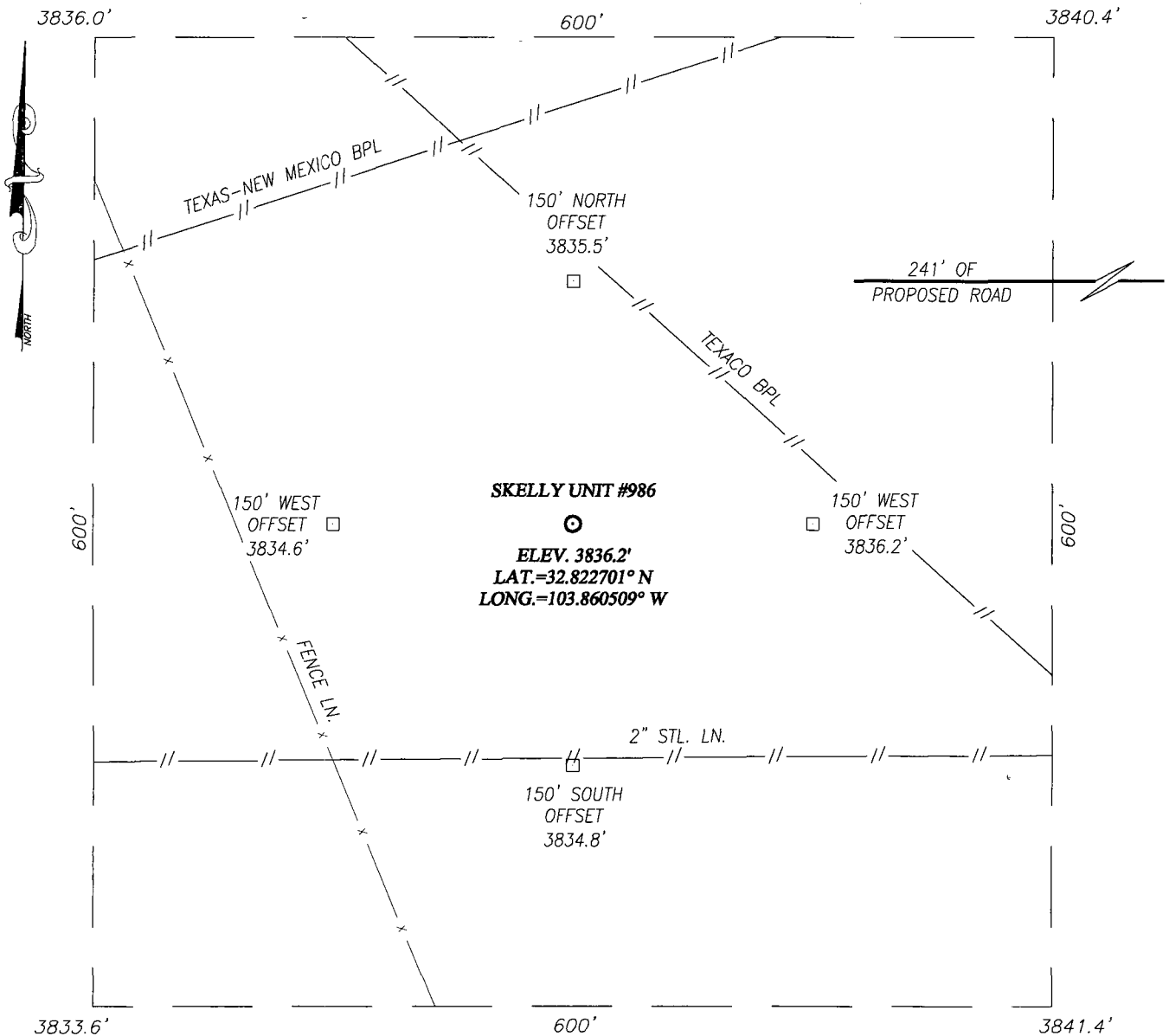
Ronald J. Eidson
Professional Surveyor
3239

Certificate No. GARY G. EIDSON 12641
RONALD J. EIDSON 3239

SECTION 22, TOWNSHIP 17 SOUTH, RANGE 31 EAST, N.M.P.M.

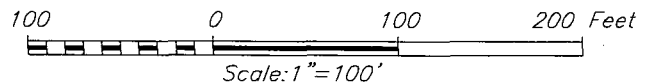
EDDY COUNTY

NEW MEXICO



DIRECTIONS TO LOCATION

FROM THE INTERSECTION OF U.S. HIGHWAY #82 AND COUNTY ROAD 223 (SWEET GUM ROAD), GO NORTH ON SWEET GUM RD. APPROX. 0.4 MILES. TURN RIGHT AND GO EAST APPROX. 0.9 MILES. TURN LEFT AND GO NORTH APPROX. 0.3 MILES. TURN LEFT AT PROPOSED ROAD SURVEY AND GO WEST APPROX. 241 FEET. THIS LOCATION IS APPROX. 212 FEET SOUTHWEST.



COG OPERATING, LLC

SKELLY UNIT #986 WELL
 LOCATED 1650 FEET FROM THE NORTH LINE
 AND 1550 FEET FROM THE WEST LINE OF SECTION 22,
 TOWNSHIP 17 SOUTH, RANGE 31 EAST, N.M.P.M.,
 EDDY COUNTY, NEW MEXICO

Survey Date: 05/19/08	Sheet 1 of 1 Sheets
W.O. Number: 08.11.0622	Dr By: DSS
Date: 05/27/08	08110622
	Scale: 1"=100'

PROVIDING SURVEYING SERVICES
 SINCE 1946
JOHN WEST SURVEYING COMPANY
 412 N. DAL PASO
 HOBBS, N.M. 88240
 (505) 383-3117

Offset Wells to Skelly Unit 986

API#	Operator	Lease	Well#	County	Legal	Last Prod. Field Name	Reservoir Name	Total Depth	Well Status
30-015-05343	FOREST OIL CORP	SKELLY UNIT	041	EDDY	S:22, T:17S, R:31E	Jun 2004 GRAYBURG JACKSON	SR-Q-G-SA	3,818	Injection Well
30-015-05344	FOREST OIL CORP	SKELLY UNIT	002	EDDY	S:22, T:17S, R:31E	May 2008 GRAYBURG JACKSON	SR-Q-G-SA	0	Pumping
30-015-05344	WISER OIL CO (THE)	SKELLY UNIT	002	EDDY	S:22, T:17S, R:31E	Dec 1977 GRAYBURG JKSN SR-Q-G-SA(DO NOT USE)		0	Pumping
30-015-05345	FOREST OIL CORP	SKELLY UNIT	052	EDDY	S:22, T:17S, R:31E	Jun 2004 GRAYBURG JACKSON	SR-Q-G-SA	3,790	Injection Well
30-015-05345	WISER OIL CO (THE)	SKELLY UNIT	052	EDDY	S:22, T:17S, R:31E	GRAYBURG JKSN SR-Q-G-SA(DO NOT USE)		3,790	Injection Well
30-015-05346	WISER OIL CO (THE)	SKELLY UNIT	045	EDDY	S:22, T:17S, R:31E	Dec 1977 GRAYBURG JKSN SR-Q-G-SA(DO NOT USE)		3,804	Injection Well
30-015-05346	FOREST OIL CORP	SKELLY UNIT	045	EDDY	S:22, T:17S, R:31E	Jun 2006 GRAYBURG JACKSON	SR-Q-G-SA	3,804	Injection Well
30-015-05347	WISER OIL CO (THE)	SKELLY UNIT	003	EDDY	S:22, T:17S, R:31E	Mar 1974 GRAYBURG JKSN SR-Q-G-SA(DO NOT USE)		12,384	Active
30-015-05347	WISER OIL CO (THE)	SKELLY UNIT	003	EDDY	S:22, T:17S, R:31E	Mar 1974 GRAYBURG JACKSON	SR-Q-G-SA	12,384	Active
30-015-05348	WISER OIL CO (THE)	SKELLY UNIT	051	EDDY	S:22, T:17S, R:31E	Feb 1997 GRAYBURG JACKSON	SR-Q-G-SA	12,204	Shut-in
30-015-05348	WISER OIL CO (THE)	SKELLY UNIT	051	EDDY	S:22, T:17S, R:31E	Dec 1977 GRAYBURG JKSN SR-Q-G-SA(DO NOT USE)		12,204	Shut-in
30-015-05349	WISER OIL CO (THE)	SKELLY UNIT	055	EDDY	S:22, T:17S, R:31E	Dec 1977 GRAYBURG JKSN SR-Q-G-SA(DO NOT USE)		3,690	Injection Well
30-015-05349	FOREST OIL CORP	SKELLY UNIT	055	EDDY	S:22, T:17S, R:31E	May 2008 GRAYBURG JACKSON	SR-Q-G-SA	3,690	Injection Well
	FOREST OIL	SKELLY			S:22,				

30-015-05350	CORP	UNIT	056	EDDY	T:17S, R:31E	May 2008	GRAYBURG JACKSON	SR-Q-G-SA	3,709	Injection Well
30-015-05350	WISER OIL CO (THE)	SKELLY UNIT	056	EDDY	S:22, T:17S, R:31E		GRAYBURG JKSN SR-Q-G-SA(DO NOT USE)		3,709	Injection Well
30-015-05351	FOREST OIL CORP	SKELLY UNIT	054	EDDY	S:22, T:17S, R:31E	May 2004	GRAYBURG JACKSON	SR-Q-G-SA	3,800	Injection Well
30-015-05351	WISER OIL CO (THE)	SKELLY UNIT	054	EDDY	S:22, T:17S, R:31E		GRAYBURG JKSN SR-Q-G-SA(DO NOT USE)		3,800	Injection Well
30-015-05352	WISER OIL CO (THE)	SKELLY UNIT	053	EDDY	S:22, T:17S, R:31E	Dec 1977	GRAYBURG JKSN SR-Q-G-SA(DO NOT USE)		3,810	Active
30-015-05352	WISER OIL CO (THE)	SKELLY UNIT	053	EDDY	S:22, T:17S, R:31E	Feb 1987	GRAYBURG JACKSON	SR-Q-G-SA	3,810	Active
30-015-05353	FOREST OIL CORP	SKELLY UNIT	057	EDDY	S:22, T:17S, R:31E	May 2008	GRAYBURG JACKSON	SR-Q-G-SA	0	Injection Well
30-015-05353	WISER OIL CO (THE)	SKELLY UNIT	057	EDDY	S:22, T:17S, R:31E	Dec 1977	GRAYBURG JKSN SR-Q-G-SA(DO NOT USE)		0	Injection Well
30-015-05354	WISER OIL CO (THE)	SKELLY UNIT	044	EDDY	S:22, T:17S, R:31E		GRAYBURG JACKSON	SR-Q-G-SA	3,804	Shut-in
30-015-05355	FOREST OIL CORP	SKELLY UNIT	058	EDDY	S:22, T:17S, R:31E	May 2006	GRAYBURG JACKSON	SR-Q-G-SA	0	Injection Well
30-015-05355	WISER OIL CO (THE)	SKELLY UNIT	058	EDDY	S:22, T:17S, R:31E	Dec 1967	GRAYBURG JKSN SR-Q-G-SA(DO NOT USE)		0	Injection Well
30-015-05356	WISER OIL CO (THE)	SKELLY UNIT	042	EDDY	S:22, T:17S, R:31E		GRAYBURG JACKSON	SR-Q-G-SA	2,165	Injection Well
30-015-05356	WISER OIL CO (THE)	SKELLY UNIT	042	EDDY	S:22, T:17S, R:31E		GRAYBURG JKSN SR-Q-G-SA(DO NOT USE)		2,165	Injection Well
30-015-05357	WISER OIL CO (THE)	SKELLY UNIT	046	EDDY	S:22, T:17S, R:31E		GRAYBURG JKSN SR-Q-G-SA(DO NOT USE)		3,820	Injection Well
30-015-05357	FOREST OIL CORP	SKELLY UNIT	046	EDDY	S:22, T:17S, R:31E	May 2008	GRAYBURG JACKSON	SR-Q-G-SA	3,820	Injection Well
					S:22,					

30-015-05358	FOREST OIL CORP	SKELLY UNIT	101	EDDY	T:17S, R:31E	Jun 2004	GRAYBURG JACKSON	SR-Q-G-SA	3,725	Injection Well
30-015-05358	WISER OIL CO (THE)	SKELLY UNIT	101	EDDY	S:22, T:17S, R:31E	Dec 1977	GRAYBURG JKSN SR-Q-G-SA(DO NOT USE)		3,725	Injection Well
30-015-10500	FOREST OIL CORP	SKELLY UNIT	043	EDDY	S:22, T:17S, R:31E	Oct 2005	GRAYBURG JACKSON	SR-Q-G-SA	0	Active
30-015-21089	WISER OIL CO (THE)	SKELLY UNIT	115	EDDY	S:22, T:17S, R:31E	Sep 1997	GRAYBURG JACKSON	SR-Q-G-SA	3,910	Temporarily Abandoned
30-015-21090	FOREST OIL CORP	SKELLY UNIT	116	EDDY	S:22, T:17S, R:31E	May 2008	GRAYBURG JACKSON	SR-Q-G-SA	4,000	Active
30-015-22251	FOREST OIL CORP	SKELLY UNIT	117	EDDY	S:22, T:17S, R:31E	May 2008	GRAYBURG JACKSON	SR-Q-G-SA	0	Pumping
30-015-22252	FOREST OIL CORP	SKELLY UNIT	118	EDDY	S:22, T:17S, R:31E	May 2008	GRAYBURG JACKSON	SR-Q-G-SA	2,580	Temporarily Abandoned
30-015-22256	FOREST OIL CORP	SKELLY UNIT	122	EDDY	S:22, T:17S, R:31E	May 2008	GRAYBURG JACKSON	SR-Q-G-SA	2,600	Pumping
30-015-22257	FOREST OIL CORP	SKELLY UNIT	123	EDDY	S:22, T:17S, R:31E	Aug 2004	GRAYBURG JACKSON	SR-Q-G-SA	2,580	Shut-in
30-015-22258	FOREST OIL CORP	SKELLY UNIT	124	EDDY	S:22, T:17S, R:31E	May 2008	GRAYBURG JACKSON	SR-Q-G-SA	11,065	Active
30-015-22259	FOREST OIL CORP	SKELLY UNIT	125	EDDY	S:22, T:17S, R:31E	May 2008	GRAYBURG JACKSON	SR-Q-G-SA	2,500	Active
30-015-22262	WISER OIL CO (THE)	SKELLY UNIT	128	EDDY	S:22, T:17S, R:31E	Dec 1977	GRAYBURG JKSN SR-Q-G-SA(DO NOT USE)		2,550	Active
30-015-22262	FOREST OIL CORP	SKELLY UNIT	128	EDDY	S:22, T:17S, R:31E	May 2008	GRAYBURG JACKSON	SR-Q-G-SA	2,550	Active
30-015-25038	FOREST OIL CORP	SKELLY UNIT	156	EDDY	S:22, T:17S, R:31E	May 2008	GRAYBURG JACKSON	SR-Q-G-SA	3,685	Active
30-015-25039	FOREST OIL CORP	SKELLY UNIT	157	EDDY	S:22, T:17S, R:31E	May 2008	GRAYBURG JACKSON	SR-Q-G-SA	3,705	Active
					S:22,					

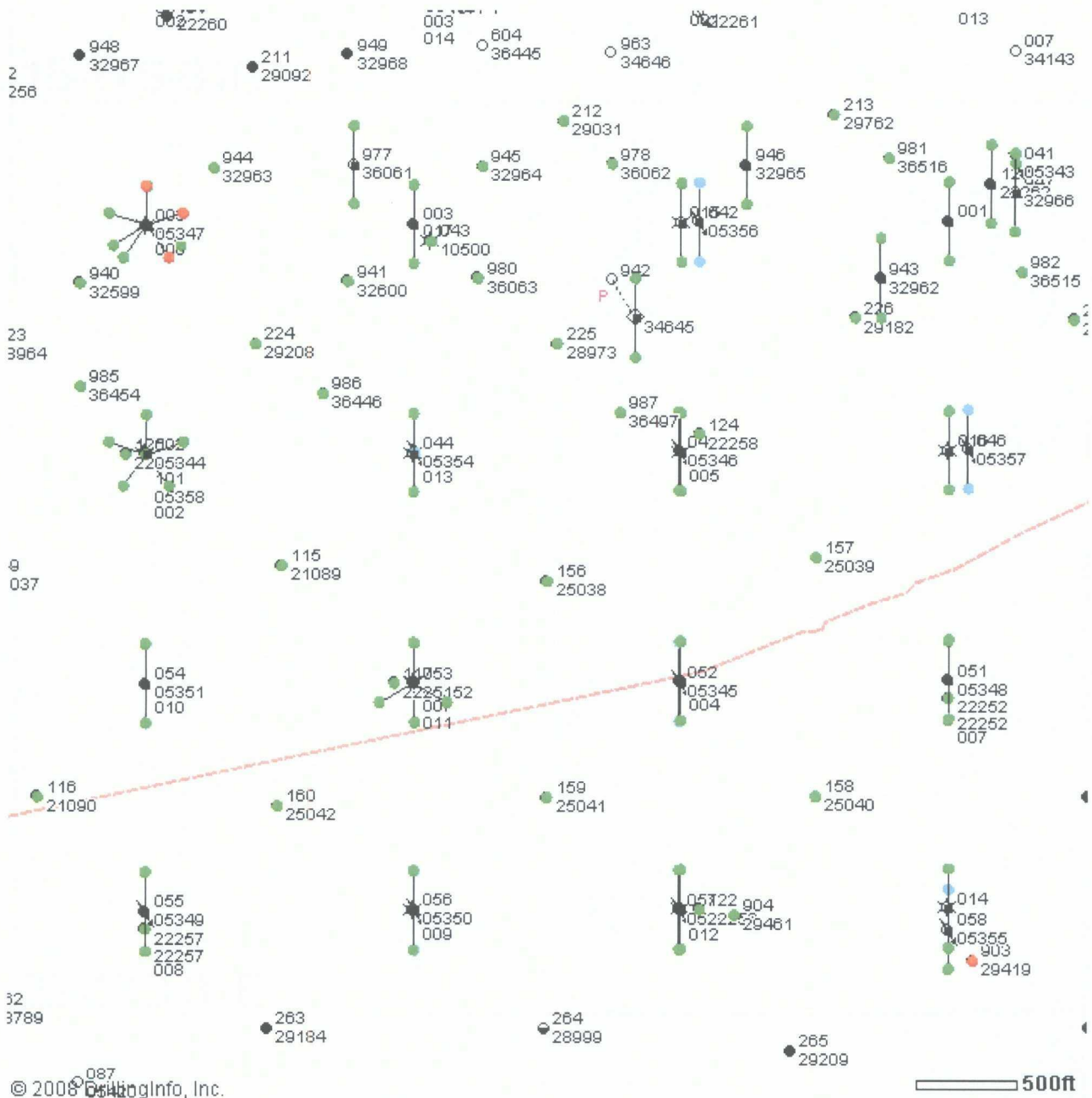
30-015-25040	FOREST OIL CORP	SKELLY UNIT	158	EDDY	T:17S, R:31E	May 2008	GRAYBURG JACKSON	SR-Q-G-SA	4,049	Temporarily Abandoned
30-015-25041	FOREST OIL CORP	SKELLY UNIT	159	EDDY	S:22, T:17S, R:31E	May 2008	GRAYBURG JACKSON	SR-Q-G-SA	3,962	Active
30-015-25042	FOREST OIL CORP	SKELLY UNIT	160	EDDY	S:22, T:17S, R:31E	May 2008	GRAYBURG JACKSON	SR-Q-G-SA	3,900	Active
30-015-28948	FOREST OIL CORP	SKELLY UNIT	227	EDDY	S:22, T:17S, R:31E	May 2008	GRAYBURG JACKSON	SR-Q-G-SA	3,950	Pumping
30-015-28973	FOREST OIL CORP	SKELLY UNIT	225	EDDY	S:22, T:17S, R:31E	May 2008	GRAYBURG JACKSON	SR-Q-G-SA	4,000	Pumping
30-015-29031	FOREST OIL CORP	SKELLY UNIT	212	EDDY	S:22, T:17S, R:31E	May 2008	GRAYBURG JACKSON	SR-Q-G-SA	4,060	Pumping
30-015-29182	FOREST OIL CORP	SKELLY UNIT	226	EDDY	S:22, T:17S, R:31E	May 2008	GRAYBURG JACKSON	SR-Q-G-SA	4,000	Pumping
30-015-29208	WISER OIL CO (THE)	SKELLY UNIT	224	EDDY	S:22, T:17S, R:31E	Oct 1999	GRAYBURG JACKSON	SR-Q-G-SA	4,000	Shut-in
30-015-29419	CHEVRON USA, INC.	SKELLY UNIT	903	EDDY	S:22, T:17S, R:31E	Dec 2003	CEDAR LAKE ABO,EAST		8,000	Pumping
30-015-29461	CHEVRON USA, INC.	SKELLY UNIT	904	EDDY	S:22, T:17S, R:31E	Nov 2003	CEDAR LAKE ABO,EAST		9,200	Shut-in
30-015-29762	FOREST OIL CORP	SKELLY UNIT	213	EDDY	S:22, T:17S, R:31E	May 2008	GRAYBURG JACKSON	SR-Q-G-SA	3,950	Pumping
30-015-00000		LYNCHA FEDERAL	006	EDDY	S:22, T:17S, R:31E	Dec 1965	FREN	PENN (GAS)		Active
30-015-32600	CHEVRON USA, INC.	SKELLY UNIT	941	EDDY	S:22, T:17S, R:31E	Jun 2008	FREN	PADDOCK	5,478	Active
30-015-32599	CHEVRON USA, INC.	SKELLY UNIT	940	EDDY	S:22, T:17S, R:31E	Jun 2008	FREN	PADDOCK	5,427	Active
30-015-32963	CHEVRON USA, INC.	SKELLY UNIT	944	EDDY	S:22, T:17S, R:31E	Jun 2008	FREN	PADDOCK	5,450	Active
					S:22,					

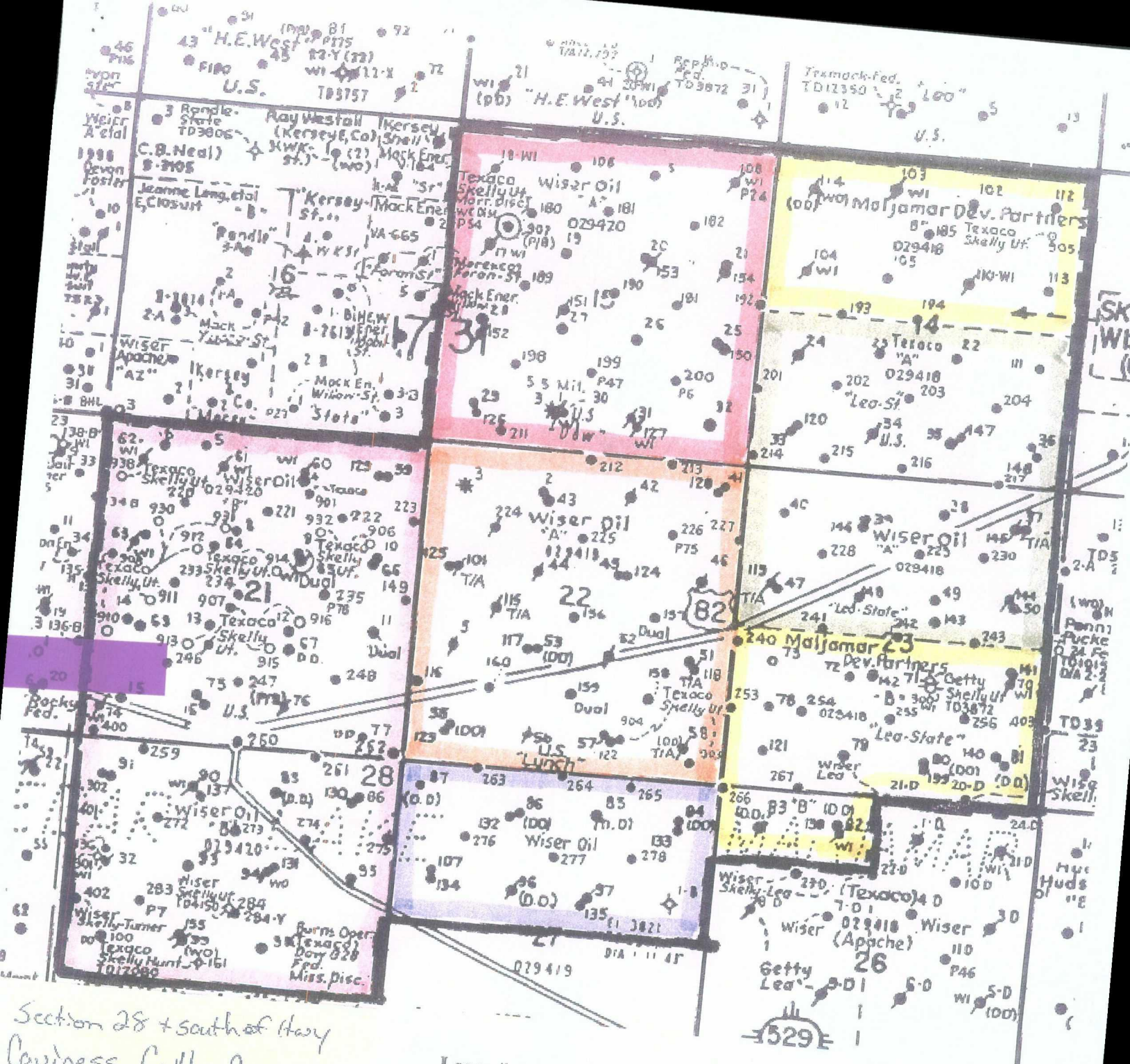
30-015-32964	CHEVRON USA, INC.	SKELLY UNIT	945 EDDY	T:17S, R:31E	Jun 2008	FREN	PADDOCK	5,483	Active
30-015-32966	CHEVRON USA, INC.	SKELLY UNIT	947 EDDY	S:22, T:17S, R:31E	Jun 2008	FREN	PADDOCK	5,430	Active
30-015-32962	CHEVRON USA, INC.	SKELLY UNIT	943 EDDY	S:22, T:17S, R:31E	Jun 2008	FREN	PADDOCK	5,410	Active
30-015-32965	CHEVRON USA, INC.	SKELLY UNIT	946 EDDY	S:22, T:17S, R:31E	Jun 2008	FREN	PADDOCK	5,430	Active
30-015-32966	CHEVRON USA, INC.	SKELLY UNIT	947 EDDY	S:22, T:17S, R:31E		FREN	MORROW	5,430	Active
30-015-32962	CHEVRON USA, INC.	SKELLY UNIT	943 EDDY	S:22, T:17S, R:31E		FREN	MORROW	5,410	Active
30-015-32965	CHEVRON USA, INC.	SKELLY UNIT	946 EDDY	S:22, T:17S, R:31E		FREN	MORROW	5,430	Active
30-015-00000	SKELLY OIL CO	LYNCH A BTRY 1	001 EDDY	S:22, T:17S, R:31E	Dec 1966	GRAYBURG JACKSON QUEEN GBR S A CTD			Active
30-015-00000	SKELLY OIL COMPANY	LYNCH "A"	006 EDDY	S:22, T:17S, R:31E	Dec 1956	EDDY COUNTY WILDCATS			Active
30-015-00000	SKELLY OIL CO	LYNCH A FED	002 EDDY	S:22, T:17S, R:31E	Dec 1966	GRAYBURG JACKSON QUEEN GBR S A CTD			Active
30-015-00000	SKELLY OIL CO	LYNCH A FED SEC 22	004 EDDY	S:22, T:17S, R:31E	Dec 1962	GRAYBURG JACKSON QUEEN GBR S A CTD			Active
30-015-00000	SKELLY OIL CO	LYNCH A FED SEC 22	005 EDDY	S:22, T:17S, R:31E	Dec 1966	GRAYBURG JACKSON QUEEN GBR S A CTD			Active
30-015-00000	SKELLY OIL CO	LYNCH A FED SEC 22	007 EDDY	S:22, T:17S, R:31E	Dec 1966	GRAYBURG JACKSON QUEEN GBR S A CTD			Active
30-015-00000	SKELLY OIL CO	LYNCH A FED SEC 22	009 EDDY	S:22, T:17S, R:31E	Dec 1963	GRAYBURG JACKSON QUEEN GBR S A CTD			Active
30-015-00000	SKELLY OIL CO	LYNCH A FED SEC 22	012 EDDY	S:22, T:17S, R:31E	Dec 1963	GRAYBURG JACKSON QUEEN GBR S A CTD			Active
				S:22,					

30-015-00000	SKELLY OIL CO	LYNCH A FED SEC 22	013	EDDY	T:17S, R:31E	Dec 1963	GRAYBURG JACKSON QUEEN GBR S A CTD	Active
30-015-00000	SKELLY OIL CO	LYNCH A FED SEC 22	014	EDDY	S:22, T:17S, R:31E	Dec 1966	GRAYBURG JACKSON QUEEN GBR S A CTD	Active
30-015-00000	SKELLY OIL CO	LYNCH A FED SEC 22	015	EDDY	S:22, T:17S, R:31E	Dec 1963	GRAYBURG JACKSON QUEEN GBR S A CTD	Active
30-015-00000	SKELLY OIL CO	LYNCH A FED SEC 22	016	EDDY	S:22, T:17S, R:31E	Dec 1963	GRAYBURG JACKSON QUEEN GBR S A CTD	Active
30-015-00000	SKELLY OIL CO	LINCH A	003	EDDY	S:22, T:17S, R:31E	Dec 1966	FREN MORROW	Active
30-015-00000	SKELLY OIL CO	LYNCH A BTRY 1	007	EDDY	S:22, T:17S, R:31E	Dec 1961	GRAYBURG UPPER PENN	Active
30-015-00000	SKELLY OIL CO	LYNCH A FED SEC 22	008	EDDY	S:22, T:17S, R:31E	Dec 1966	GRAYBURG UPPER PENN	Active
30-015-00000	SKELLY OIL CO	LYNCH A FED SEC 22	010	EDDY	S:22, T:17S, R:31E	Dec 1963	GRAYBURG UPPER PENN	Active
30-015-00000	SKELLY OIL CO	LYNCH A FED SEC 22	011	EDDY	S:22, T:17S, R:31E	Dec 1966	GRAYBURG UPPER PENN	Active
30-015-00000	SKELLY OIL CO	LYNCH A	001	EDDY	S:22, T:17S, R:31E	Dec 1964	GRAYBURG-JACKSON	Active
30-015-00000	SKELLY OIL CO	LYNCH A	004	EDDY	S:22, T:17S, R:31E	Apr 1965	GRAYBURG-JACKSON	Active
30-015-00000	SKELLY OIL CO	LYNCH A FEDERAL	006	EDDY	S:22, T:17S, R:31E	Dec 1965	GRAYBURG JACKSON Q	Active
30-015-00000	SKELLY OIL COMPANY	LYNCH A	006	EDDY	S:22, T:17S, R:31E	Dec 1960	FREN-PENN.	Active
30-015-00000	SKELLY OIL COMPANY	LYNCH A	006	EDDY	S:22, T:17S, R:31E		FREN-PENNSYLVANIAN	Active
30-015-05344	SKELLY OIL COMPANY	SKELLY UNIT	002	EDDY	S:22, T:17S, R:31E	Dec 1971	FREN 7 RVRS	0 Pumping
					S:22,			

30-015-05347	SKELLY OIL COMPANY	SKELLY UNIT	003 EDDY	T:17S, R:31E	Dec 1971	FREN 7 RVRS		12,384	Active
30-015-00000	SKELLY OIL CO	LYNCH A BATTERY	017 EDDY	S:22, T:17S, R:31E	Dec 1966	GRAYBURG JACKSON	SR-Q-G-SA		Unknown
30-015-34645	CHEVRON USA, INC.	SKELLY UNIT	942 EDDY	S:22, T:17S, R:31E		FREN	PADDOCK	6,500	Active Permit
30-015-00000	SKELLY OIL CO	LYNCH A FED REP 2	005 EDDY	S:22, T:17S, R:31E	Dec 1965				Active
30-015-00000	SKELLY OIL CO	LYNCH A FED REP 2	007 EDDY	S:22, T:17S, R:31E	Dec 1965				Active
30-015-00000	SKELLY OIL CO	LYNCH A FED REP 2	008 EDDY	S:22, T:17S, R:31E	Dec 1965				Active
30-015-00000	SKELLY OIL CO	LYNCH A FED REP 2	009 EDDY	S:22, T:17S, R:31E	Apr 1965				Active
30-015-00000	SKELLY OIL CO	LYNCH A FED REP 2	010 EDDY	S:22, T:17S, R:31E	Apr 1965				Active
30-015-00000	SKELLY OIL CO	LYNCH A FED REP 2	011 EDDY	S:22, T:17S, R:31E	Dec 1965				Active
30-015-00000	SKELLY OIL CO	LYNCH A FED REP 2	012 EDDY	S:22, T:17S, R:31E	Dec 1965				Active
30-015-00000	SKELLY OIL CO	LYNCH A FED REP 2	013 EDDY	S:22, T:17S, R:31E	Apr 1965				Active
30-015-00000	SKELLY OIL CO	LYNCH A FED REP 2	014 EDDY	S:22, T:17S, R:31E	Dec 1965	GRAYBURG JACKSON QUEEN			Active
30-015-00000	SKELLY OIL CO	LYNCH A FED REP 2	015 EDDY	S:22, T:17S, R:31E	Apr 1965				Active
30-015-00000	SKELLY OIL CO	LYNCH A FED REP 2	016 EDDY	S:22, T:17S, R:31E	Apr 1965				Active
30-015-36061	CHEVRON USA, INC.	SKELLY UNIT	977 EDDY	S:22, T:17S, R:31E		FREN	PADDOCK	6,510	Active Permit
				S:22,					

30-015-36062	CHEVRON USA, INC.	SKELLY UNIT	978	EDDY	T:17S, R:31E	FREN	PADDOCK	6,500	Active Permit
30-015-36063	CHEVRON USA, INC.	SKELLY UNIT	980	EDDY	S:22, T:17S, R:31E	FREN	PADDOCK	6,500	Active Permit
30-015-34645	COG OPERATING, LLC	SKELLY UNIT	942	EDDY	S:22, T:17S, R:31E	FREN; GLORIETA-YESO		6,500	Active Permit
30-015-36061	COG OPERATING, LLC	SKELLY UNIT	977	EDDY	S:22, T:17S, R:31E	FREN; GLORIETA-YESO		6,510	Active Permit
30-015-36446	COG OPERATING, LLC	SKELLY UNIT	986	EDDY	S:22, T:17S, R:31E	FREN (PADDOCK)	PADDOCK	6,600	Active Permit
30-015-36454	COG OPERATING, LLC	SKELLY UNIT	985	EDDY	S:22, T:17S, R:31E	FREN (PADDOCK)	PADDOCK	6,600	Active Permit
30-015-36497	COG OPERATING, LLC	SKELLY UNIT	987	EDDY	S:22, T:17S, R:31E	FREN (PADDOCK)	PADDOCK	6,600	Active Permit
30-015-36516	COG OPERATING, LLC	SKELLY UNIT	981	EDDY	S:22, T:17S, R:31E	FREN (PADDOCK)	PADDOCK	6,500	Active Permit
30-015-36515	COG OPERATING, LLC	SKELLY UNIT	982	EDDY	S:22, T:17S, R:31E	FREN (PADDOCK)	PADDOCK	6,500	Active Permit





Section 28 + south of Hwy
 Caviness Cattle Co.
 1316 South Main
 Portales, NM 88130
 Allotment 6058

Section 21 + North of Hwy
 Charles K. Martin
 P.O. Box 706
 Artesia, NM 88210
 Allotment 7004

Lease #	Description
NM-98122	Sec. 21 and outlined part of Sec. 28
NM-98121	N/2 Sec. 27
NM-98120	N/2 Sec. 14 and S/2 Sec. 23 part of Sec. 26
LC-029418 (a)	S/2 Sec. 14 and N/2 Sec. 23
LC-029419 (a)	Sec. 22
LC-029420 (a)	Sec. 15