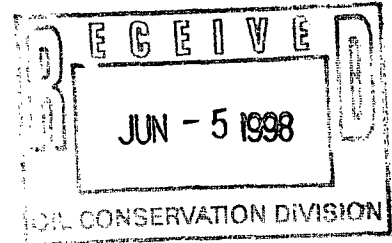


MACK ENERGY CORPORATION

NSL 6/25/98

Post Office Box 960
Artesia, New Mexico 88211-0960
(505) 748-1288 / FAX (505) 746-2362

June 2, 1998



Oil Conservation Division
Attn: Mike Stogner
2040 South Pacheco
Santa Fe, NM 87505

Dear Mr. Stogner:

Mack Energy Corporation respectfully requests an administrative approval without notice and hearing of the following unorthodox well location.

Because of our desire to drill this well in a timely manner, we also request your approval be expedited. The well location and legal description is as follows:

Western Federal #3
2330 FNL & 1650 FEL
Sec. 30, T17S, R29E
Eddy County, New Mexico

NSL-OIL-N42

The well will be completed in the Paddock formation in the East Empire Yeso Pool.

Attached to this application are the following exhibits.

- A.) Well location and acreage dedication plat (form C-102) filed with the Artesia office of the Oil Conservation Division (Exhibit A).
- B.) A plat showing the proposed unorthodox locations, the respective proration units, and the offsetting proration units (Exhibit B).
- C.) A map showing the reason for the unorthodox location, the original location would have fallen under the existing power lines (Exhibit C).

By copy of this letter including the exhibits to all parties, we are notifying them by certified mail return-receipt requested of the unorthodox location.

*Oil Conservation Division
June 2, 1998
Page 2*

Thank you for your assistance in this matter. If you have any questions, please feel free to call.

Sincerely,

MACK ENERGY CORPORATION

Matt J. Brewer

*Matt J. Brewer
Geological Engineer*

/mb

Enclosures

cc: Certified Mail

*Marathon Oil Company
P.O. Box 552
Midland, TX 79702-0552*

*Louis Dreyfus Natural Gas
14000 Quail Springs PKWY, Ste 600
Oklahoma City, OK 73134*

DISTRICT II
P.O. Drawer DD, Artesia, NM 88211-0719

DISTRICT III
1000 Rio Brazos Rd., Aztec, NM 87410

DISTRICT IV
P.O. BOX 2088, SANTA FE, N.M. 87504-2088

OIL CONSERVATION DIVISION

P.O. Box 2088

Santa Fe, New Mexico 87504-2088

Form C-102
Revised February 10, 1994
Submit to Appropriate District Office
State Lease - 4 Copies
Free Lease - 3 Copies
MAY - 4 1998
MAY - 4 1998
AMENDED REPORT

WELL LOCATION AND ACREAGE DEDICATION PLAT

API Number	Pool Code	Pool Name
	96610	East Empire Yeso
Property Code	Property Name	Well Number
022366	WESTERN FEDERAL	3
OGRID No.	Operator Name	Elevation
013837	MACK ENERGY CORPORATION	3634

Surface Location

UL or lot No.	Section	Township	Range	Lot Idn	Feet from the	North/South line	Feet from the	East/West line	County
G	30	17 S	29 E		2330	NORTH	1650	EAST	EDDY

Bottom Hole Location If Different From Surface

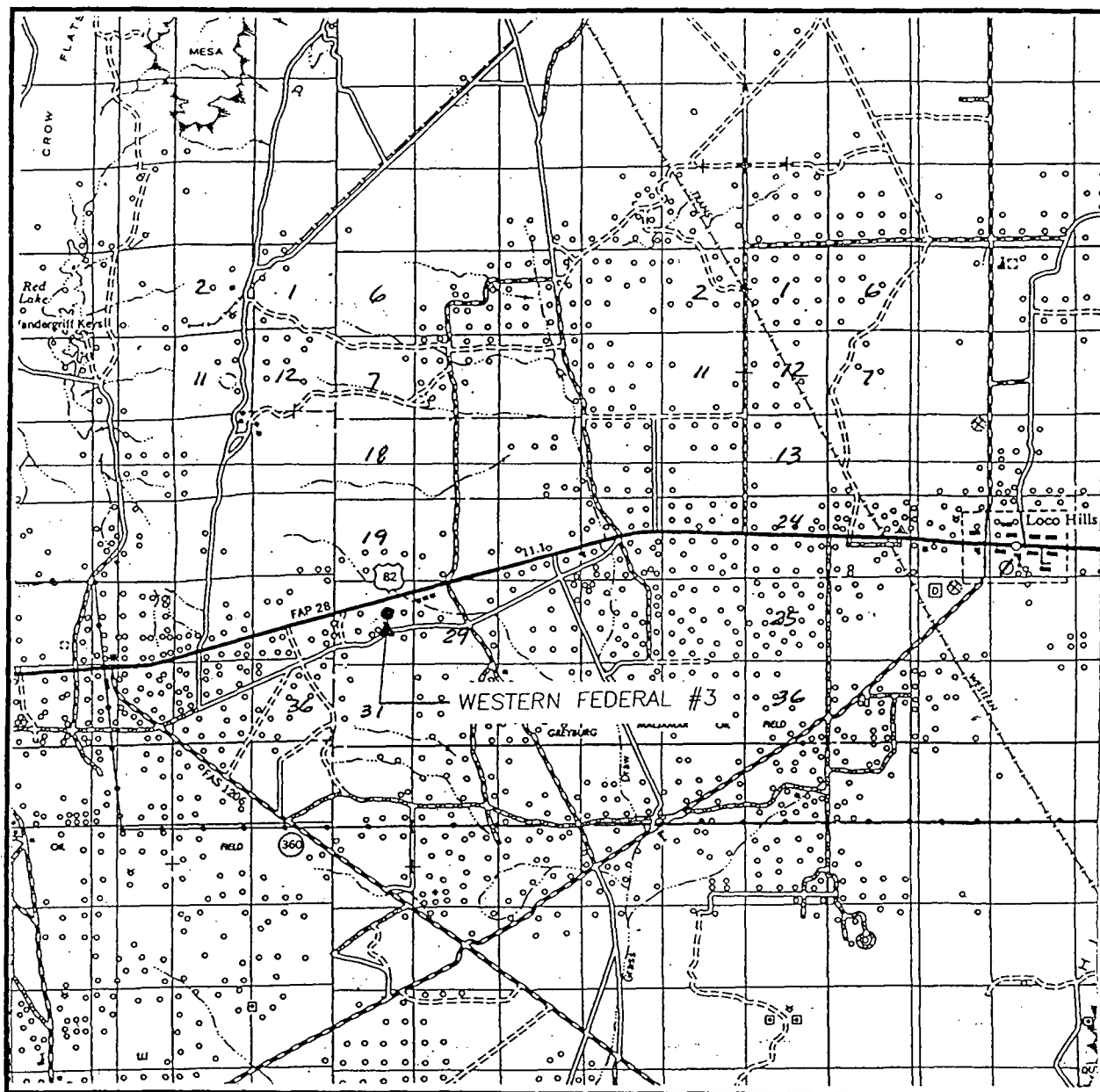
UL or lot No.	Section	Township	Range	Lot Idn	Feet from the	North/South line	Feet from the	East/West line	County
Dedicated Acres	Joint or Infill	Consolidation Code	Order No.						

NO ALLOWABLE WILL BE ASSIGNED TO THIS COMPLETION UNTIL ALL INTERESTS HAVE BEEN CONSOLIDATED
OR A NON-STANDARD UNIT HAS BEEN APPROVED BY THE DIVISION

[illegible]

VICINITY MAP

MAY - 4 1986



SCALE: 1" = 2 MILES

SEC. 30 TWP. 17-S RGE. 29-E

SURVEY N.M.P.M.

COUNTY EDDY

DESCRIPTION 2330' FNL & 1650' FEL

ELEVATION 3634

OPERATOR MACK ENERGY CORPORATION

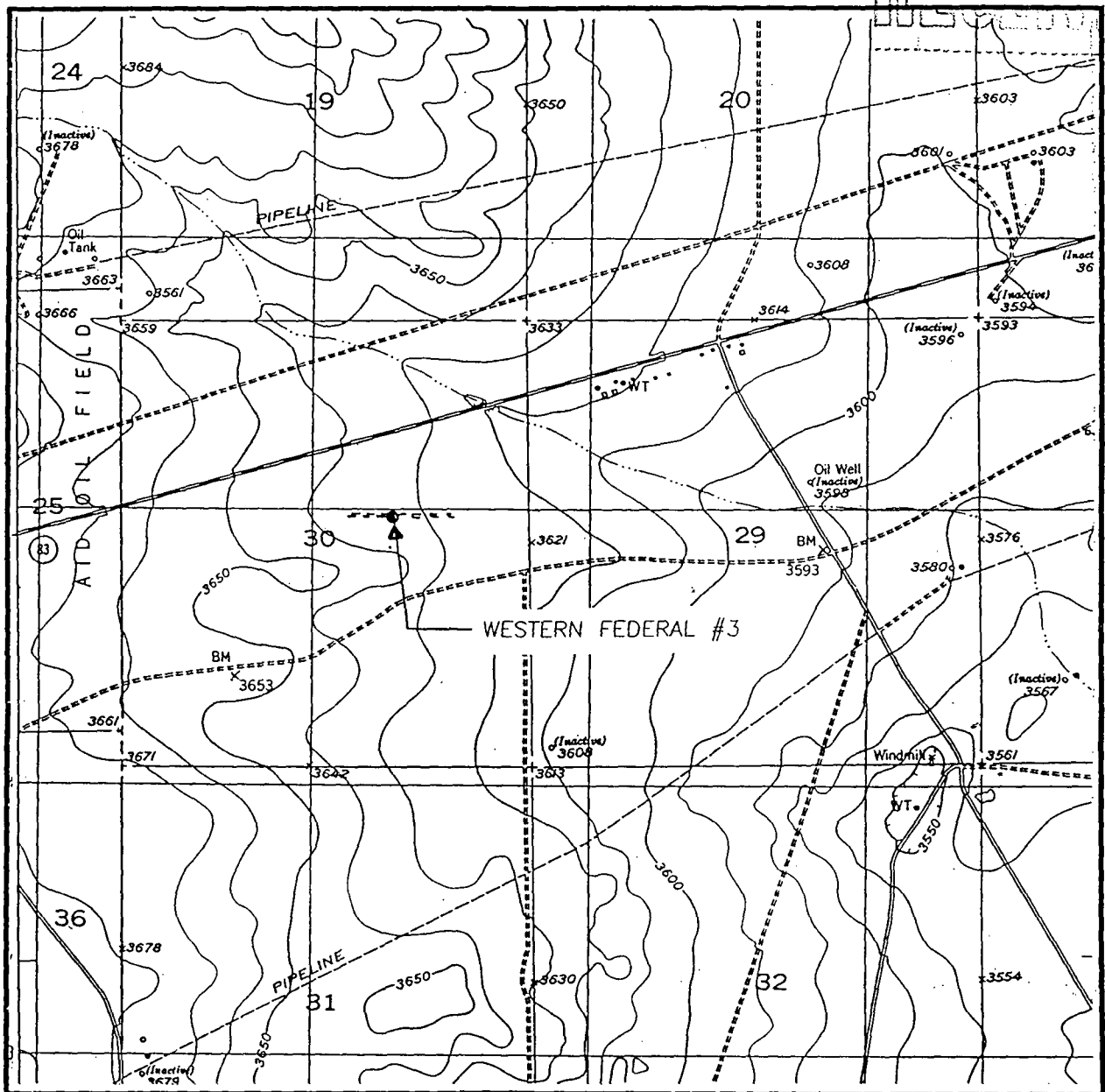
LEASE WESTERN FEDERAL

**JOHN WEST ENGINEERING
HOBBS, NEW MEXICO**

(505) 393-3117

LOCATION VERIFICATION MAP

MAY - 4 1998



SCALE: 1" = 2000'

CONTOUR INTERVAL:
RED LAKE SE - 10'

SEC. 30 TWP. 17-S RGE. 29-E

SURVEY N.M.P.M.

COUNTY EDDY

DESCRIPTION 2330' FNL & 1650' FEL

ELEVATION 3634

OPERATOR MACK ENERGY CORPORATION

LEASE WESTERN FEDERAL

U.S.G.S. TOPOGRAPHIC MAP

RED LAKE SE, N.M.

JOHN WEST ENGINEERING
HOBBS, NEW MEXICO
(505) 393-3117

Exhibit B

Western Federal #3
Sec. 30, T17S, R29E
2330' FNL & 1650' FEL

IN RED

IN RED

702455	HGP	Hunt Oil	M-20	8 6846
1	E 2201	Com 1		
	Mack Ener.			
742	1			
1	EO			
1	McWbourne	1 Mil Santa Fe Ener		
1	(Exxon)	Neutrogen-SF		
1	2 & Mil	Chase	Marbob	
2		Oil	1 94	
2	King of	pac	5J SF	
1	Watson	Ent 40		
1	McWbourne-SF	Wack Ener	VS 4	
		8 5008	200 80	
		W 1000		
			Chase	
	El 7950	Tenneco	Oil 01	
	HBP		44%	
	7640		Marbob	
	Black En.		8 1956	
	ro 5000			
	(Exxon)			

[illegible]

Southwest Roy.
8-16-2013
(West. Prod.)
14840

Phillips
49 29281 Tr B

Phillips
(Gentl Amer)
29
Green
TD 11000 54
PB 2600
Tr C

Green
14841

Gentl Amer 5
18-16-2013

Black Bear
Docket
2

Green
TD 2108

Ashtman
18-16-2013

Black Bear
(Chase 1)
Oil
18-16-2013

1265

5108

103 100 EL Pason Nat.) 69 11
Pio Mack Energy 1's B-514 87(C Chase Oil)
Solar) 93 5r 105 183
Geraldine) 12 p59 48MH Marboob
WZ 6361 121 14 133 139 134 137
1108 91 MACK ENER 90 Cont'l Starline
(OPER.) 3828 136 137
(Mack Ener) 124 142
S/R 122 120 9 140
1001 (1-001)(PIB) Horizon
(3.4 MI) (LGO 5f)
ates 1 Chase Oil 2
(Wor-Horizon Ws) Mack Ener) Leonard)
Lee. B-255 772 1055001 1055001

[illegible][illegible][illegible]

(Handwritten notes on a lined notebook page)

inneco
9 - Skelly -
7/16/80 63
15 ft. str. gm. T.R.
2 SE 1/4 sec)

Mack
Ener
Aid HGP
Wentz St
TOSCOO

Dorrell
Wentz St
TOSCOO
(Chase)
Oil

Black
Mack
HBC
S/Z
Lentz Ave
Wentz St

1 ABV
ZI ABV
9aid 3

7/25/51 Continental S 30 E 4201	Phillips 25267 Johnston)
Yated Emp. Sa. Dr. (14) 45 46 47 48 49 50 51 52 53 54 55 56 57 58 59 60 61 62 63 64 65 66 67 68 69 70 71 72 73 74 75 76 77 78 79 80 81 82 83 84 85 86 87 88 89 90 91 92 93 94 95 96 97 98 99 100	Western Fed. #3 Green #12 Greys 03 25269 41 Tr So Roy Chase Oil 20000 C 8000 Tenneco D/R Orville Chase Oil Leonard 115

Mack
 Energy
 Dryflex Gaswell
 Connelly 64-
 Weicherts
 0900
 B 43
 5
 Hight
 1234
 44
 Chase Oil
 43
 Jondal
 43 Tr O Chase
 5 1/2 Oil
 34 S 647
 6400 F 104 203
 2002

1 2 3 4 5 6 7 8 9 10 11 12 13 14 15 16 17 18 19 20 21 22 23 24 25 26 27 28 29 30 31 32 33 34 35 36 37 38 39 40 41 42 43 44 45 46 47 48 49 50 51 52 53 54 55 56 57 58 59 60 61 62 63 64 65 66 67 68 69 70 71 72 73 74 75 76 77 78 79 80 81 82 83 84 85 86 87 88 89 90 91 92 93 94 95 96 97 98 99 100

197
 • Chase Oil
 • Yates Energy (L)
 • Dreyfus Gas
 • 647 Jonnston
 • 19
 • Amoco
 • Emp. Sa
 • Five J Da.
 • y-54
 • (L Gas)
 • (Gas) gl
 • W. Welch
 • 18p
 • 1982
 • Amoco
 • Da.
 • Sr
 • nc

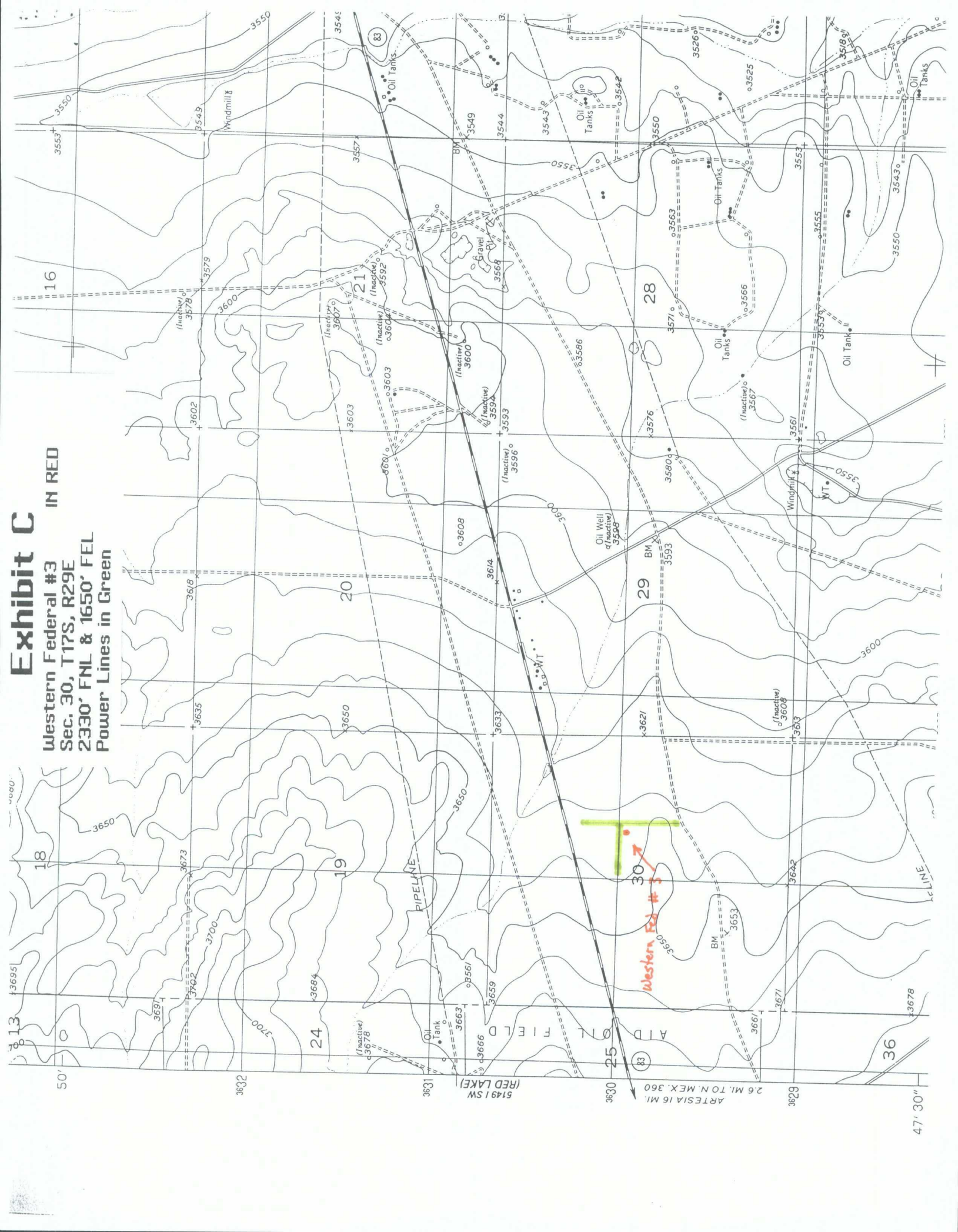


Exhibit C

Western Federal #3
Sec. 30, T17S, R29E
2330' FNL & 1650' FEL
Power Lines in Green

IN RED

County Eddy

Pool 2017 Empire - Yeso

TOWNSHIP 17 South

Range 29 East

NMPM

A 6x6 grid of numbered squares, numbered 1 to 36 in a boustrophedon pattern. The grid is used for a logic puzzle.

6	5	4	3	2	1
7	8	9	10	11	12
18	17	16	15	14	13
19	20	21	22	23	24
30	29	28	27	26	25
31	32	33	34	35	36

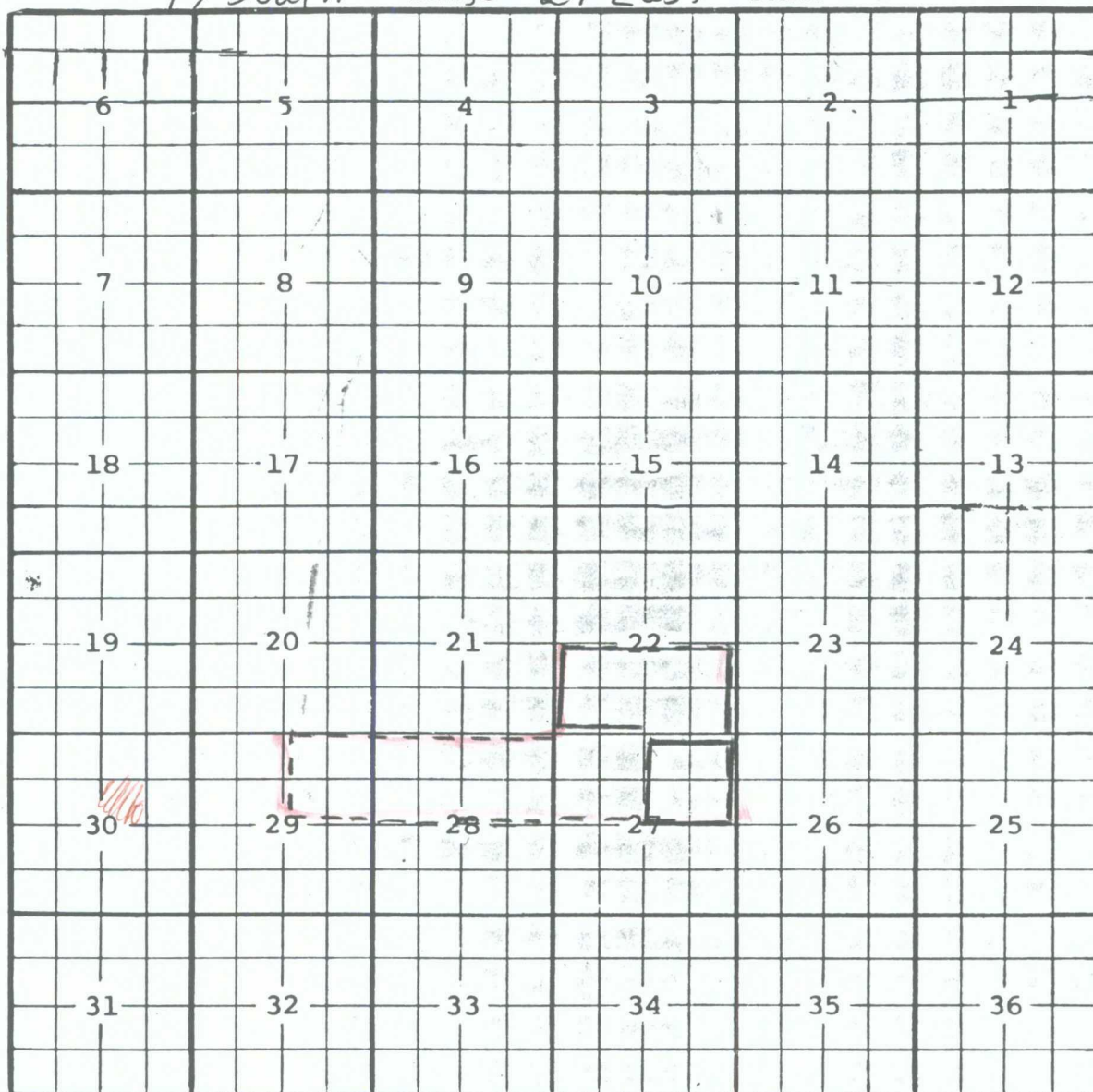
This image shows a single sheet of white paper with horizontal blue or grey ruling lines. The lines are evenly spaced and run across the width of the page. There are no margins, text, or other markings on the paper.

County Eddy

Pool East Empire - Yeso

TOWNSHIP 17 South

Range 29 East NMPM



Description: NE 1/4 Sec. 27 (R-10724, 1-8-97) Ext: S 1/2 Sec. 22 (R-10951, 2-4-98)