

DATE IN 7/21/98	SUSPENSE 8/10/98	ENGINEER MS	LOGGED BY MW	TYPE NSL
-----------------	------------------	-------------	--------------	----------

ABOVE THIS LINE FOR DIVISION USE ONLY

NEW MEXICO OIL CONSERVATION DIVISION

- Engineering Bureau -

2040 South Pacheco, Santa Fe, NM 87505



ADMINISTRATIVE APPLICATION COVERSHEET

THIS COVERSHEET IS MANDATORY FOR ALL ADMINISTRATIVE APPLICATION FOR EXCEPTIONS TO DIVISION RULES AND REGULATIONS WHICH REQUIRE PROCESSING AT THE DIVISION LEVEL IN SANTA FE

Application Acronyms:

- [NSP-Non-Standard Proration Unit] [NSL-Non-Standard Location]
 [DD-Directional Drilling] [SD-Simultaneous Dedication]
 [DHC-Downhole Commingling] [CTB-Lease Commingling] [PLC-Pool/Lease Commingling]
 [PC-Pool Commingling] [OLS - Off-Lease Storage] [OLM-Off-Lease Measurement]
 [WFX-Waterflood Expansion] [PMX-Pressure Maintenance Expansion]
 [SWD-Salt Water Disposal] [IPI-Injection Pressure Increase]
 [EOR-Qualified Enhanced Oil Recovery Certification] [PPR-Positive Production Response]

[1] TYPE OF APPLICATION - Check Those Which Apply for [A]

[A] Location - Spacing Unit - Directional Drilling

☒ NSL ☐ NSP ☐ DD ☐ SD

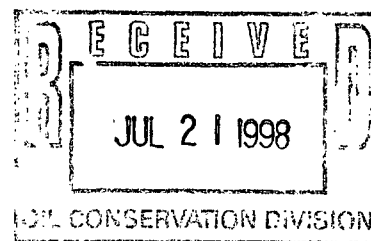
Check One Only for [B] or [C]

[B] Commingling - Storage - Measurement

☐ DHC ☐ CTB ☐ PLC ☐ PC ☐ OLS ☐ OLM

[C] Injection - Disposal - Pressure Increase - Enhanced Oil Recovery

☐ WFX ☐ PMX ☐ SWD ☐ IPI ☐ EOR ☐ PPR



[2] NOTIFICATION REQUIRED TO: - Check Those Which Apply, or ☐ Does Not Apply

[A] ☐ Working, Royalty or Overriding Royalty Interest Owners

[B] ☐ Offset Operators, Leaseholders or Surface Owner

[C] ☐ Application is One Which Requires Published Legal Notice

[D] ☒ Notification and/or Concurrent Approval by BLM or SLO
U.S. Bureau of Land Management - Commissioner of Public Lands, State Land Office

[E] ☐ For all of the above, Proof of Notification or Publication is Attached, and/or,

[F] ☐ Waivers are Attached

[3] INFORMATION / DATA SUBMITTED IS COMPLETE - Certification

I hereby certify that I, or personnel under my supervision, have read and complied with all applicable Rules and Regulations of the Oil Conservation Division. Further, I assert that the attached application for administrative approval is accurate and complete to the best of my knowledge and where applicable, verify that all interest (WI, RI, ORRI) is common. I understand that any omission of data (including API numbers, pool codes, etc.), pertinent information and any required notification is cause to have the application package returned with no action taken.

Note: Statement must be completed by an individual with managerial and/or supervisory capacity.

Print or Type Name

Signature

Title

Date

BURLINGTON RESOURCES

SAN JUAN DIVISION

July 20, 1998

Sent Federal Express

Ms. Lori Wrotenbery, Director
New Mexico Oil Conservation Division
2040 South Pacheco
Santa Fe, New Mexico 87505

Re: Allison Unit #61
800'FNL, 2460'FEL, Section 7, T-32-N, R-6-W, San Juan County, New Mexico
30-045-29628

Dear Ms. Wrotenbery:

Burlington Resources is applying for administrative approval of an unorthodox gas well location for both the Mesa Verde and Dakota pools. This application for the referenced location is due to terrain, the presence of archaeology and houses, and at the request of the landowner.

~~(Production from the Blanco Mesa Verde pool is to be included in a 348.78 acre gas spacing and proration unit comprising Lots 1-5, SE/4 NW/4, S/2 NE/4 of Section 7 and Lots 3-4, SW/4 NW/4 of Section 8.)~~ Production from the Basin Dakota pool is to be included in a 348.78 acre gas spacing and proration unit comprising Lots 1-5, SE/4 NW/4, S/2 NE/4 of Section 7 and Lots 3-4, SW/4 NW/4 of Section 8. The non-standard proration unit for this well will come before the New Mexico Oil Conservation Division in hearing as Case #11989. *June 25th*

The following attachments are for your review:

1. Application for Permit to Drill.
 2. Completed C-102 at referenced location.
 3. Offset operators/owners plat – Burlington is the operator of the unit.
 4. 7.5 minute topographic map showing the orthodox windows, and enlargement of the map to define topographic features.
- R-11003*

We appreciate your earliest consideration of this application.

Sincerely,



Peggy Bradfield
Regulatory/Compliance Administrator

xc: NMOCD - Aztec District Office
Bureau of Land Management – Farmington District Office

District I
PO Box 1980, Hobbs, NM 88241-1980
District II
811 South First, Artesia, NM 88210
District III
1000 Rio Brazos Rd., Aztec, NM 87410
District IV
2040 South Pacheco, Santa Fe, NM 87505

State of New Mexico
Energy, Minerals & Natural Resources Department

OIL CONSERVATION DIVISION

2040 South Pacheco
Santa Fe, NM 87505

Form C-101
Revised October 18, 1994
Instructions on back
Submit to Appropriate District Office
State Lease - 6 Copies
Fee Lease - 5 Copies

AMENDED REPORT

RECEIVED

APPLICATION FOR PERMIT TO DRILL, RE-ENTER, DEEPEN, PLUGBACK, OR ADD A ZONE

¹ Operator Name and Address. Burlington Resources PO Box 4289, Farmington, NM 87499		² OGRID Number 14538
³ API Number 30 - 045- 29628		
⁴ Property Code 6784	⁵ Property Name Allison Unit	⁶ Well No. 61

⁷ Surface Location

UL or lot no.	Section	Township	Range	Lot Idn	Feet from the	North/South line	Feet from the	East/West line	County
G	7	32N	6W		800	N	2460	E	SJ

⁸ Proposed Bottom Hole Location If Different From Surface

UL or lot no.	Section	Township	Range	Lot Idn	Feet from the	North/South line	Feet from the	East/West line	County

⁹ Proposed Pool 1

Basin Dakota

¹⁰ Proposed Pool 2

Blanco Mesa Verde

¹¹ Work Type Code N	¹² Well Type Code G	¹³ Cable/Rotary Rotary	¹⁴ Lease Type Code Fee	¹⁵ Ground Level Elevation 6225'GR
¹⁶ Multiple Yes	¹⁷ Proposed Depth 7742	¹⁸ Formation MV/Dk	¹⁹ Contractor N/a	²⁰ Spud Date N/a

²¹ Proposed Casing and Cement Program

Hole Size	Casing Size	Casing weight/foot	Setting Depth	Sacks of Cement	Estimated TOC
12 1/4"	9 5/8"	32.3#	200'	188 cu.ft.	Surface
8 3/4"	7"	20.0#	3187'	838 cu.ft.	Surface
6 1/4"	4 1/2"	10.5#	3087-7742'	669 cu.ft.	TOC 3087'

²² Describe the proposed program. If this application is to DEEPEN or PLUG BACK give the data on the present productive zone and proposed new productive zone. Describe the blowout prevention program, if any. Use additional sheets if necessary.

11" 2000 psi minimum double gate BOP

Note: to facilitate higher hydraulic stimulation completion work, no liner hanger will be used. In its place, a long string of 4 1/2" casing will be run and cemented with a minimum of 100' of cement overlap between the 4 1/2" and 7" casing strings. After completion of the well, a 4 1/2" retrievable bridge plug will be set below the top of cement in the 4 1/2" x 7" overlap. The 4 1/2" casing will then be backed off above the top of cement in the 4 1/2" x 7" overlap and laid down. The liner top can then be pressure tested to ensure a seal between the liner top and the 7" casing has been achieved. The test pressure shall be the maximum anticipated pressure to which the seal will be exposed (700 psi for the Mesa Verde and 2500 psi for the Dakota). The 4 1/2" bridge plug will then be retrieved and the production tubing will be run to produce the well.

²³ I hereby certify that the information given above is true and complete to the best of my knowledge and belief. Signature: <i>Peggy Bradfield</i>		OIL CONSERVATION DIVISION	
Printed name: Peggy Bradfield		Approved by: <i>Ernie Burch</i>	
Title: Regulatory/Compliance Administrator		Title: DEPUTY OIL & GAS INSPECTOR, DIST. #3	
Date: 06-11-98		Approval Date: JUN 25 1998 Expiration Date: JUN 25 1999	
Phone: 505-326-9700		Conditions of Approval: <i>HOLD C-104 FOR NSP & NSL</i>	
		Attached <input type="checkbox"/>	

District I
PO Box 1980, Hobbs, NM 88241-1980

District II
PO Drawer 20, Artesia, NM 88211-0219

District III
1000 Rio Brazos Rd., Aztec, NM 87410

District IV
PO Box 2088, Santa Fe, NM 87504-2088

State of New Mexico
Energy, Minerals & Natural Resources Department

OIL CONSERVATION DIVISION
PO Box 2088
Santa Fe, NM 87504-2088

For
Revised February
Instructions
Submit to Appropriate District
State Lease -
Fee Lease -

☐ AMENDED F

WELL LOCATION AND ACREAGE DEDICATION PLAT

API Number 30-045-29628		Pool Code 72319/71599		Pool Name Blanco Mesaverde/Basin Dakota	
Property Code 6784		Property Name ALLISON UNIT			Well Num. 61
GRID No. 14538		Operator Name BURLINGTON RESOURCES OIL & GAS COMPANY			Elevation 6225

10 Surface Location

UL or lot no.	Section	Township	Range	Lot 10	Feet from the	North/South line	Feet from the	East/West line	
G	7	32N	SW		800	NORTH	2460	EAST	SAN

11 Bottom Hole Location If Different From Surface

UL or lot no.	Section	Township	Range	Lot 10	Feet from the	North/South line	Feet from the	East/West line	

12 Dedicated Acres
MV - 348.78
DK - 348.78

13 Joint or Infill

14 Consolidation Code

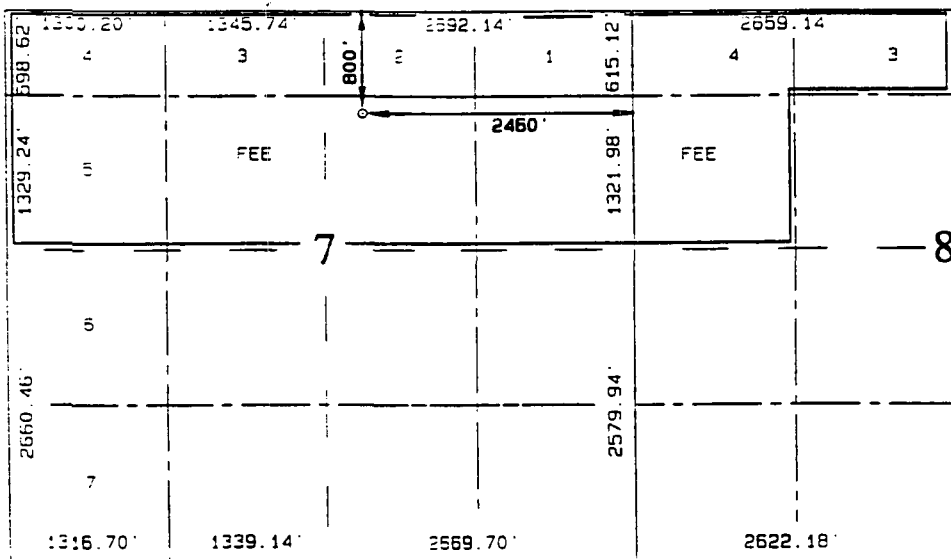
15 Order No.

NO ALLOWABLE WILL BE ASSIGNED TO THIS COMPLETION UNTIL ALL INTERESTS HAVE BEEN CONSOLIDATED OR A NON-STANDARD UNIT HAS BEEN APPROVED BY THE DIVISION

RECEIVED
JUN 16 1998

B 08.78

OIL CON. DIV.
DIST. 3



17 OPERATOR CERTIFICATE

I hereby certify that the information contained herein is true and complete to the best of my knowledge.

Peggy Bradfield
Signature

Peggy Bradfield
Printed Name

Regulatory Administrator
Title

6-11-98

Date

SURVEYOR CERTIFICATE

I hereby certify that the well location shown was plotted from field notes or actual survey or under my supervision and that the same is correct to the best of my belief.

MAY 7, 1998

Date of Survey

Signature and Seal of Professional

NEALE EDWARDS
NEW MEXICO
6857
REGISTERED PROFESSIONAL
Certificate Number

BURLINGTON RESOURCES OIL AND GAS COMPANY

Allison Unit #61

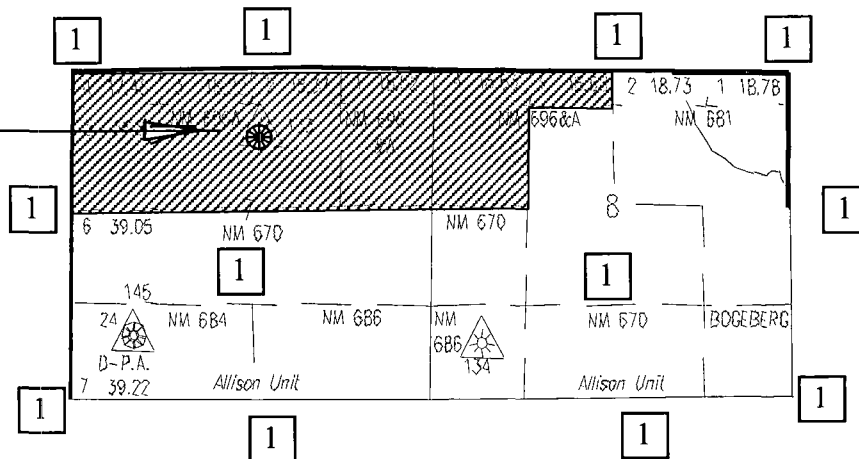
OFFSET OPERATOR/OWNER PLAT

Mesaverde/Dakota Formations

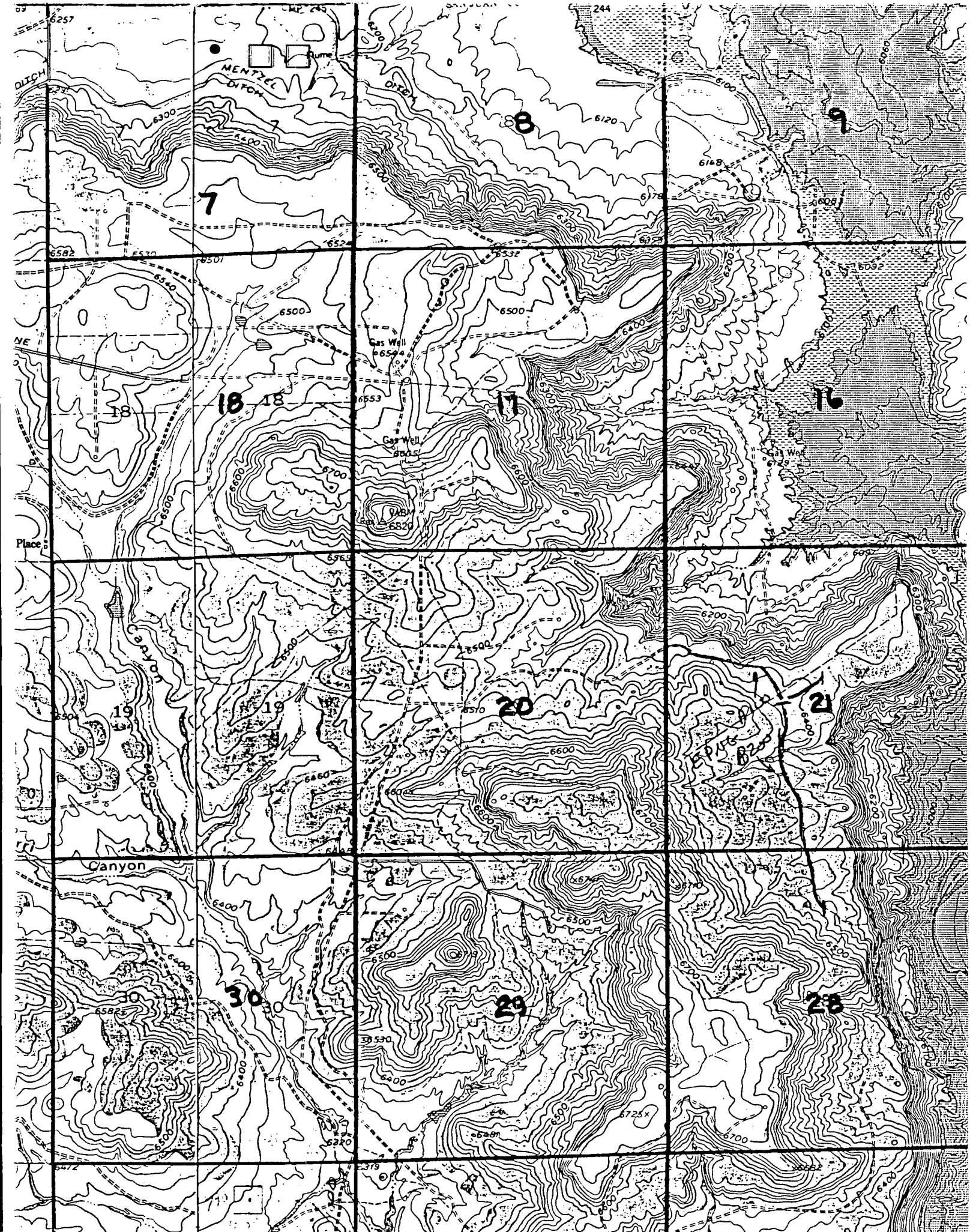
Nonstandard Location

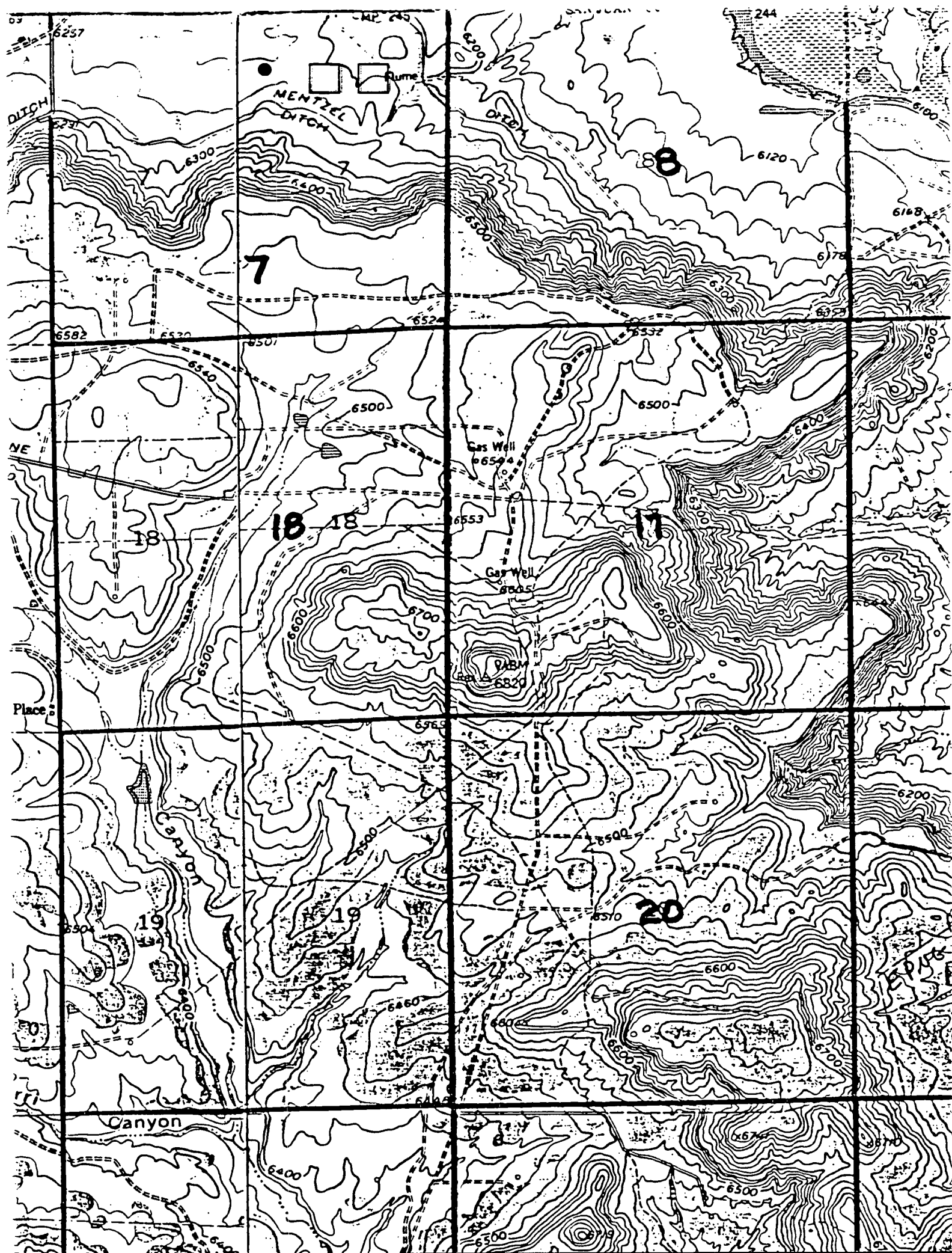
Township 32 North, Range 6 West

800' FNL
2460' FEL



1) Burlington Resources







NEW MEXICO ENERGY, MINERALS
& NATURAL RESOURCES DEPARTMENT

OIL CONSERVATION DIVISION
2040 South Pacheco Street
Santa Fe, New Mexico 87505
(505) 827-7131

August 13, 1998

Burlington Resources Oil & Gas Company
P. O. Box 4289
Farmington, New Mexico 87499-4289

Attention: Peggy Bradfield

Re: Two applications submitted to the New Mexico Oil Conservation Division ("Division") on July 21, 1998 for administrative approval to develop the previously approved 308.78-acre non-standard gas spacing and proration unit comprising Lots 1 through 5, the S/2 NE/4, and the SE/4 NW/4 of Section 7 and Lots 3 and 4 and the SW/4 NW/4 of Section 8, both in Township 32 North, Range 6 West, NMPM, Basin-Dakota and Blanco-Mesaverde Pools, San Juan County, New Mexico, with two unorthodox well locations.

Dear Ms. Bradfield:

Please provide the Division with detailed maps and a written narrative that clearly and completely describes the topographic reasons and conditions that exist within this unit that results in the need for Burlington Resources Oil & Gas Company to drill its proposed Allison Unit Well Nos. 61 and 61-M at the requested unorthodox gas well locations.

Sincerely,

A handwritten signature in dark ink, appearing to read "Michael E. Stogner", with a long horizontal flourish extending to the right.

Michael E. Stogner
Chief Hearing Officer/Engineer

MES/kv

cc: New Mexico Oil Conservation Division - Aztec
W. Thomas Kellahin, Legal Counsel for Burlington Resources - Santa Fe
U. S. Bureau of Land Management - Farmington