

GW – 396

Initial Incident Photos

YEAR(S): 2008



11/13/08





11/13/08

11/13/08



11/13/08



PHOENIX HYDROCARBONS OPERATING CORP
LANGUE JAL UNIT #002
UNIT A, SEC. 31, T24S, R37E
990' FNL & 660' FEL
LEA CO., NM API #30-025-24837

11/13/08

PHOENIX HYDROCARBONS OPERATING CORP

LANGLIE JAL UNIT #002

UNIT A, SEC. 31, T24S, R37E

990' FNL & 660' FEL

LEA CO., NM API #30-025-24837

11/13/08





11/13/08





11/13/08





11/13/08







11/14/08



11/14/08



11/14/08



11/14/08



11/14/08





11/14/08



11/14/08



11/14/08



11/14/08



11/14/08



11/14/08



11/14/08



11/14/08



11/14/08



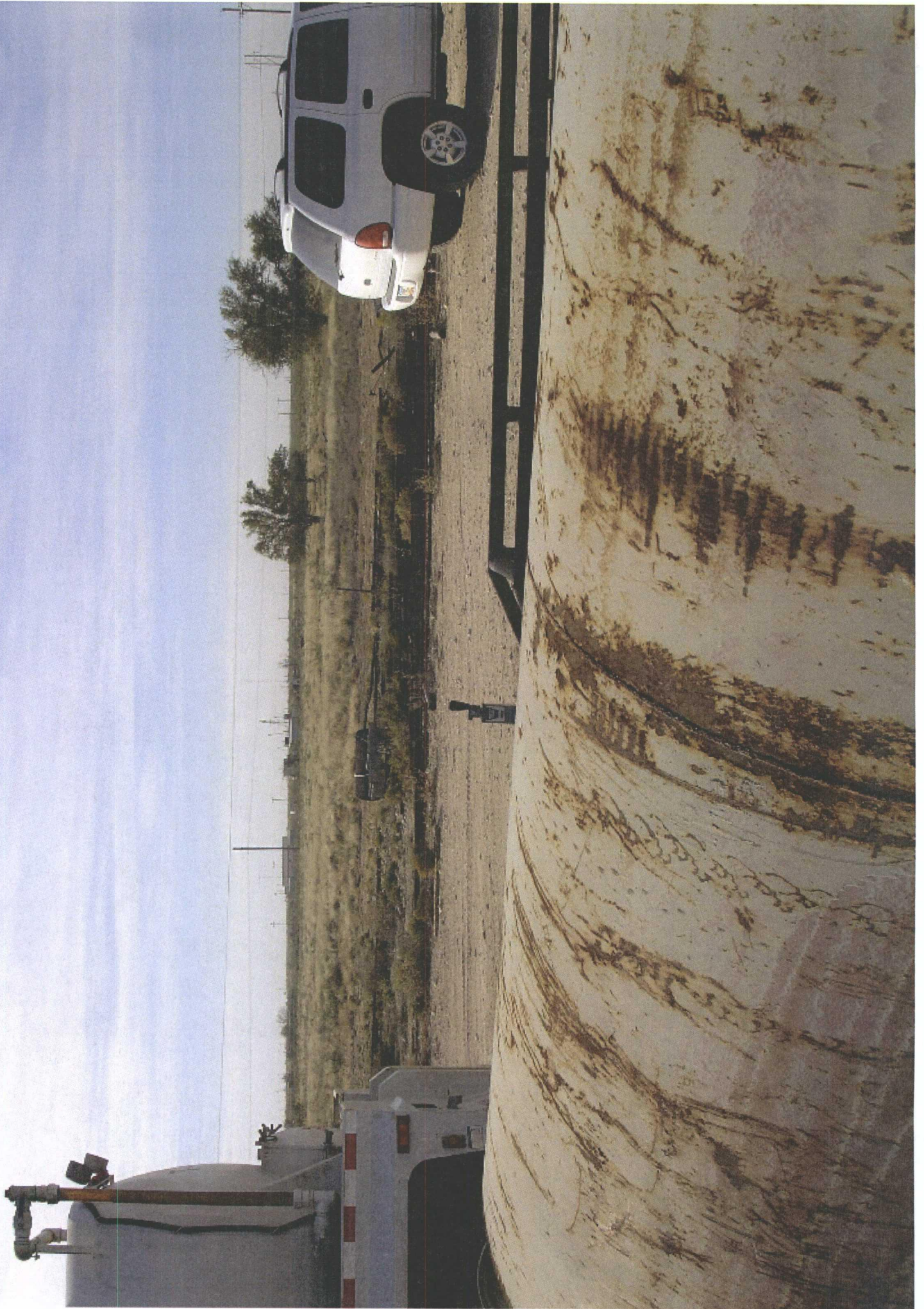
11/14/08





PHOENIX HYDROCARBONS OPERATING CORP
LANGLIE JAL UNIT #002
UNIT A, SEC. 31, T24S, R37E
990' FNL & 660' FEL
LEA CO., NM API #30-025-24837

11/14/08



11/14/08



11/14/08



11/14/08



11/14/08



11/14/08





11/14/08



11/14/08



11/14/08



PHOENIX HYDROCARBONS OPERATING CORP

LANGLIE JAL UNIT #002

UNIT A, SEC. 31, T24S, R37E

990' FNL & 660' FEL

LEA CO., NM API #30-025-24837

11/14/08



11/14/08



11/14/08



11/14/08



11/14/08

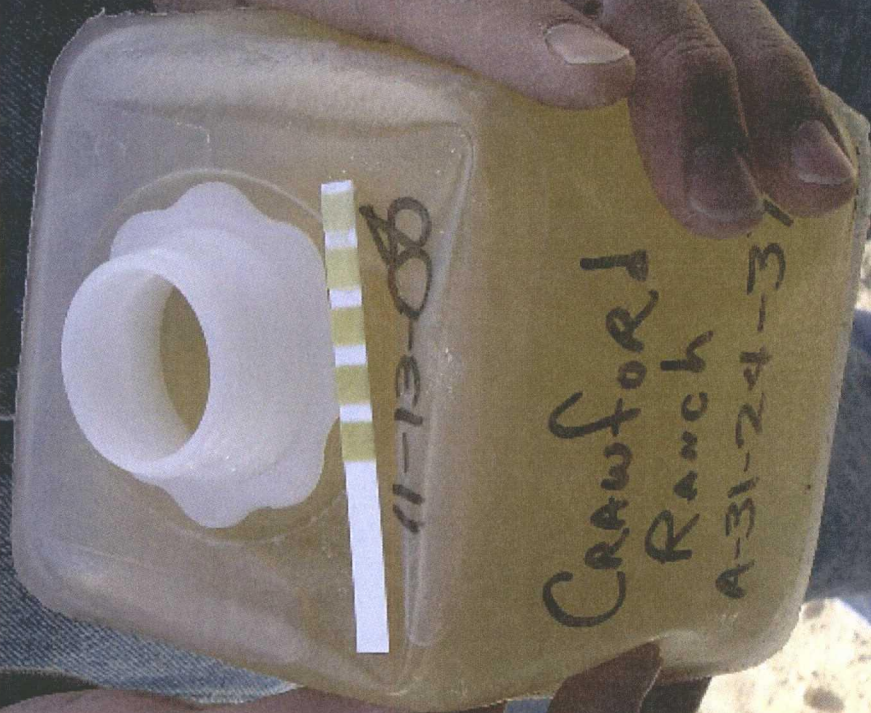


11/14/08





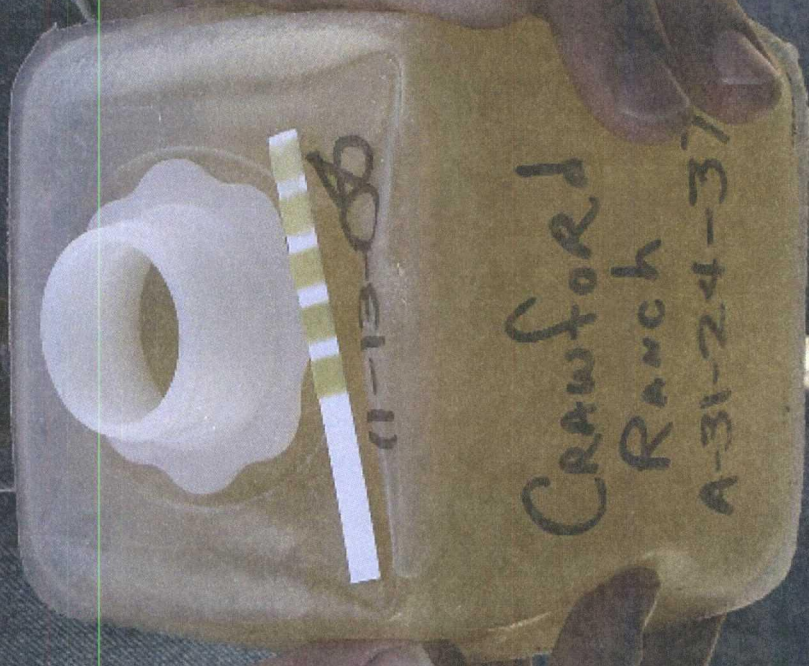
11/14/08



Crawford
Ranch
A-31-24-31

11-13-08

11/14/08



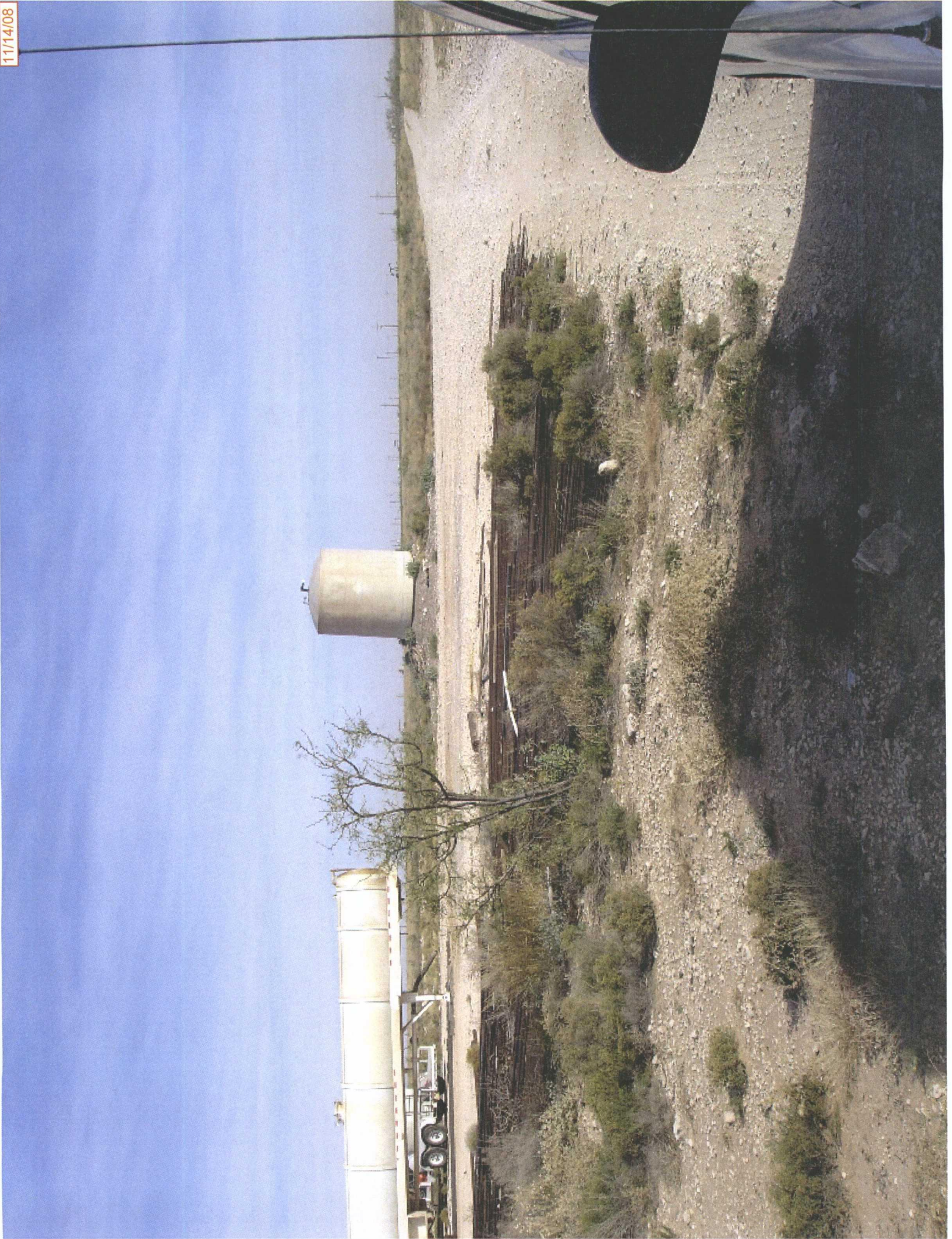
11/14/08



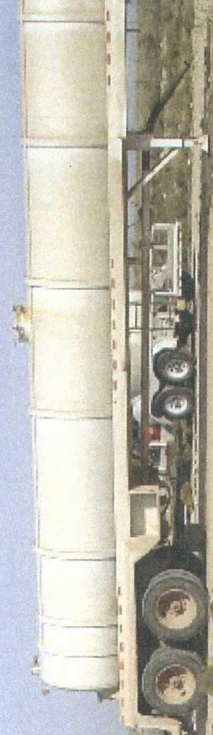
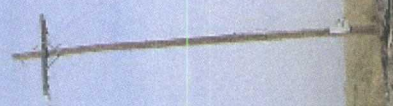
11/14/08



11/14/08



11/14/08



11/14/08





11/14/08





11/14/08



