



NEW MEXICO ENERGY, MINERALS and NATURAL RESOURCES DEPARTMENT

GARY E. JOHNSON

Governor

Betty Rivera

Cabinet Secretary

June 17, 2002

Lori Wrotenbery

Director

Oil Conservation Division

Yates Petroleum Corporation
105 South Fourth Street
Artesia, New Mexico 88210

RE: Injection Pressure Increase, - 179
Quincey "AMQ" State Well No. 9
API No. 30-005-63052
Chaves County, New Mexico

Dear Mr. Pringle:

Reference is made to your request received in this office on June 10, 2002, to increase the surface injection pressure on the above-referenced well. This request is based on a step rate test conducted on June 6, 2002. After reviewing this test, we feel an increase in injection pressure on this well is justified at this time.

You are therefore authorized to increase the surface injection pressure on the following well:

<i>Well and Location</i>	<i>Maximum Surface Injection Pressure</i>
Quincey AMQ State Well No. 9	800 PSIG
Located in SW/4 NE/4, Section 12, Township 8 South, Range 27 East, NMPM, Chaves County, New Mexico.	

This maximum surface injection pressure limit is valid only through the existing 2 7/8 inch plastic coated injection tubing.

The Division Director may rescind this injection pressure increase if it becomes apparent that the injected water is not being confined to the injection zone or is endangering any fresh water aquifers.

Sincerely,

Lori Wrotenbery (WJD)

Lori Wrotenbery
Director

cc: Oil Conservation Division – Artesia
State Land Office – Santa Fe
Files: R-10349-A, IPI-2002

208535373

1P1-179 N/A

MARTIN YATES, III
1912 - 1985
FRANK W. YATES
1936 - 1986

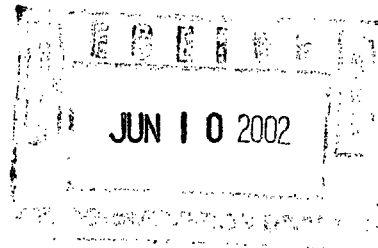


105 SOUTH FOURTH STREET
ARTESIA, NEW MEXICO 88210-2118
TELEPHONE (505) 748-1471

S. P. YATES
CHAIRMAN OF THE BOARD
JOHN A. YATES
PRESIDENT
PEYTON YATES
EXECUTIVE VICE PRESIDENT
RANDY G. PATTERSON
SECRETARY
DENNIS G. KINSEY
TREASURER

June 7, 2002

Ms. Lori Wrotenbery
State of New Mexico
Oil Conservation Division
1220 S. Saint Francis Drive
Santa Fe, New Mexico 87505-5472



Re: Quincey: "AMQ" State #9
G-Section 12-T8S-R27E
Chaves Co., New Mexico
Order No. R-10349-A

Dear Ms. Wrotenbery:

As per your letter dated April 15, 2002 when the injection pressure increase was denied and requesting additional pressure data on the above referenced well, please find enclosed support data listing the Quincy wells and associated after acid and after frac ISDP's. I have also included the drilling chronological on each well. Also enclosed is the data from a new step rate test run on the well on June 6, 2002. The well was back flowed for three hours in to a transport truck and only recovered about 60 bbls of water. This step rate test had similar results as the first test run on March 15, 2002, after the 60 bbls of water was injected.

If this is not sufficient information please contact me at (505) 748-4182.

Sincerely,

A handwritten signature in cursive script that reads 'James W. Pringle'.

James W. Pringle
Operations Engineer

enc

Schlumberger

STER Rate Test

DESIGN – EXECUTE – EVALUATE – REPORT

PUMP RENTAL

**YATES PETROLEUM
QUINCY AMQ STATE # 9
CHAVEZ COUNTY, NEW MEXICO**

**Prepared By
CHRIS S. deLEON
SERVICE SUPERVISOR**

ARTESIA DISTRICT

505-748-1392

JUNE 6,2002

WELL TREATMENT REPORT

Schlumberger
Dowell

DS-494-C PRINTED IN U.S.A.

DATE 6-6-02

WELL NAME AND NUMBER <u>Quincy AMQ State 9</u>		LOCATION (LEGAL) <u>Sec 12, TRS, R27e</u>		DOWELL LOCATION <u>2020 AXM</u>		TREATMENT NUMBER <u>2202040362</u>	
POOL/FIELD		FORMATION		BOTTOM HOLE TEMPERATURE		AGE OF WELL NEW <input type="checkbox"/> RWORK <input type="checkbox"/>	
COUNTY/PARISH <u>Chavez</u>		STATE <u>ALM</u>		ALLOWABLE PRESSURE		PERFORATED INTERVALS	
TYPE OF SERVICE <input type="checkbox"/> MATRIX TREATMENT <input type="checkbox"/> SAND CONTROL <input type="checkbox"/> FRACTURING <input type="checkbox"/> OTHER		PRIMARY TREATING FLUID		TGB: <u>5.5</u> CSG: <u>2230</u>		TOP TO BOTTOM NO. OF HOLES	
OPERATOR NAME <u>Vates Petroleum</u>				CASING SIZE WT DEPTH <u>2230 155 2230</u>		TO TO TO TO TO TO	
SERVICE INSTRUCTIONS <u>Pump Rent 21</u> <u>Step-Rate Test</u>				TUBING SIZE WT DEPTH <u>2.875 6.5 2115</u>		TO TO TO TO TO TO	
				PACKER TYPE PACKER DEPTH		TO TO TO TO TO TO	
				TUBING VOLUME ANNULAR VOL <u>12.2 33.4</u>		PERF. DIAMETER- IN.	
				OPEN HOLE CASING VOL <u>53 2.7</u>		PERFORATED INTERVAL TOTAL- FT.	
				DISPLACEMENT		C. TGB. TUBING JOB DONE DOWN CASING ANNULUS BOTH	
						<input type="checkbox"/> <input checked="" type="checkbox"/> <input type="checkbox"/> <input type="checkbox"/> <input type="checkbox"/>	
FOR CONVERSION PURPOSES 24 BBLs EQUALS 1000 GALLONS							
ARRIVED ON LOCATION: <u>11:00 6/6/02</u> LEFT LOCATION: <u>11:10</u>							

TIME (0001 to 2400)	TYPE OF FLUID	INJECTION RECORD					PRESSURE		NOTATIONS
		RATE BPM	CO ₂ - N ₂ RATE	INCREMENT VOL BBLs	CUM. VOL BBLs	PROP TYPE	PROP PPA	CSG TGB	
									Pre-Job Safety Meeting
									Pressure Test To _____ psi
0700									Flow BACK WELL
1112									STOP Flow BACK
1118	7% KCL	.25		7.5	7.5			50	START PST / RATE
								50	RATE / PST
1148		.50		7.5	15.0			80	INCREASE RATE
								192	RATE / PST
1203		.75						200	INCREASE RATE
				11.25	26.25			320	RATE / PST
1218		1.0		14.25	40.5			340	INCREASE RATE
				15.0	41.25			550	RATE / PST
1233		1.25						550	INCREASE RATE
				16.75	60.0			670	RATE / PST
1248		1.50						680	INCREASE RATE
				22.50	82.50			800	RATE / PST
1303		1.75						800	INCREASE RATE
				26.25	108.75			910	RATE / PST
1318		2.00						940	INCREASE RATE
				30.0	138.75			1140	RATE / PST
1333								925	SHUT DOWN

FLUID		BPM AVERAGE INJECTION RATES NITROGEN CARBON DIOXIDE		TOTAL W/PROP		WATER/ACID BBLs		OIL BBLs		VOLUME FLUID INJECTED NITROGEN CCF		CARBON DIOXIDE TONS	
MAXIMUM <u>1140</u>		FINAL <u>1000</u>		TREATING PRESSURE SUMMARY AVERAGE IMMED. S.D.P. 15 MIN S.I.P.		TOTAL INJECTED LBS		QUANTITY PROPPANT PLACED TOTAL ORDERED/DESIGNED		LBS		LBS	
PRODUCTION PRIOR TO THIS TREATMENT						<input type="checkbox"/> Test <input type="checkbox"/> Stabilized		PAD VOLUME _____ GALS. % PAD _____		FRACTURE GRADIENT			
CUSTOMER REPRESENTATIVE <u>Curly Talle</u>						DS SERVICE SUPERVISOR <u>Chris S. deLeon</u>		PAGE _____ OF _____ PAGES					

Schlumberger

Job Date: 06-06-2002

Customer: Yates Petroleum
District: Artesia, NM
Representative: Curtis Tolle
DS Supervisor: Chris S. deLeon
Well: Quincy AMQ State # 9

Time mm:dd:yyyy:hh:mm:ss	Treating Pressure psi	Flow Rate bbl/min	Volume bbl
06:06:2002:11:12:20	0	0.0	0.0
06:06:2002:11:14:20	0	0.0	0.0
06:06:2002:11:16:20	0	0.0	0.0
06:06:2002:11:18:00	Start Job		
06:06:2002:11:18:00	0	0.0	0.0
06:06:2002:11:18:07	Start Step-Rate Test @ .25 BPM		
06:06:2002:11:18:07	0	0.0	0.0
06:06:2002:11:18:21	101	0.2	0.0
06:06:2002:11:20:21	105	0.3	0.5
06:06:2002:11:22:21	110	0.2	1.0
06:06:2002:11:24:21	110	0.2	1.5
06:06:2002:11:26:21	110	0.2	2.0
06:06:2002:11:28:21	9	0.3	2.5
06:06:2002:11:30:22	9	0.2	3.0
06:06:2002:11:32:22	14	0.3	3.5
06:06:2002:11:34:22	18	0.3	4.0
06:06:2002:11:36:22	23	0.3	4.5
06:06:2002:11:38:22	27	0.3	5.0
06:06:2002:11:40:22	32	0.3	5.5
06:06:2002:11:42:23	41	0.2	6.0
06:06:2002:11:44:23	41	0.3	6.5
06:06:2002:11:46:23	46	0.3	6.9
06:06:2002:11:48:23	50	0.3	7.4
06:06:2002:11:48:48	Increase Rate .50 BPM		
06:06:2002:11:48:48	64	0.5	7.6
06:06:2002:11:50:23	92	0.5	8.3
06:06:2002:11:52:23	110	0.5	9.3
06:06:2002:11:54:24	128	0.5	10.4
06:06:2002:11:56:24	146	0.5	11.3
06:06:2002:11:58:24	151	0.5	12.3
06:06:2002:12:00:24	169	0.5	13.3
06:06:2002:12:02:24	179	0.5	14.3
06:06:2002:12:03:31	Increase Rate .75 BPM		
06:06:2002:12:03:31	183	0.5	14.9
06:06:2002:12:04:24	211	0.7	15.5
06:06:2002:12:06:25	233	0.7	17.0
06:06:2002:12:08:25	252	0.7	18.5
06:06:2002:12:10:25	270	0.7	20.0
06:06:2002:12:12:25	284	0.7	21.5
06:06:2002:12:14:25	298	0.7	22.9
06:06:2002:12:16:26	307	0.7	24.4
06:06:2002:12:18:26	343	1.0	25.9

Time mm:dd:yyyy:hh:mm:ss	Treating Pressure psi	Flow Rate bbl/min	Volume bbl
06:06:2002:12:18:30	339	1.0	26.0
06:06:2002:12:20:26	371	1.0	27.9
06:06:2002:12:22:26	426	1.0	29.9
06:06:2002:12:24:26	458	1.0	31.8
06:06:2002:12:26:26	462	1.0	33.8
06:06:2002:12:28:27	499	1.0	35.8
06:06:2002:12:30:27	526	1.0	37.8
06:06:2002:12:32:27	540	1.0	39.7
06:06:2002:12:33:27	Increase Rate 1.25 BPM		
06:06:2002:12:33:27	554	1.2	40.7
06:06:2002:12:34:27	568	1.3	42.0
06:06:2002:12:36:27	591	1.3	44.5
06:06:2002:12:38:27	613	1.2	47.0
06:06:2002:12:40:28	623	1.3	49.5
06:06:2002:12:42:28	632	1.2	52.0
06:06:2002:12:44:28	659	1.2	54.5
06:06:2002:12:46:28	668	1.3	57.0
06:06:2002:12:48:28	682	1.5	59.6
06:06:2002:12:48:33	Increase Rate 1.5 BPM		
06:06:2002:12:48:33	687	1.5	59.7
06:06:2002:12:50:28	682	1.5	62.6
06:06:2002:12:52:29	760	1.5	65.6
06:06:2002:12:54:29	710	1.5	68.6
06:06:2002:12:56:29	742	1.5	71.6
06:06:2002:12:58:29	760	1.5	74.6
06:06:2002:13:00:29	806	1.5	77.7
06:06:2002:13:02:30	829	1.5	80.7
06:06:2002:13:03:21	Increase Rate 1.75 BPM		
06:06:2002:13:03:21	806	1.7	82.0
06:06:2002:13:04:30	829	1.7	83.9
06:06:2002:13:06:30	847	1.7	87.4
06:06:2002:13:08:30	861	1.7	90.9
06:06:2002:13:10:30	870	1.7	94.4
06:06:2002:13:12:30	883	1.7	97.9
06:06:2002:13:14:31	897	1.8	101.4
06:06:2002:13:16:31	911	1.7	104.9
06:06:2002:13:18:31	925	1.9	108.5
06:06:2002:13:18:35	Increase Rate 2.0 BPM		
06:06:2002:13:18:35	938	2.0	108.6
06:06:2002:13:20:31	1016	2.0	112.5
06:06:2002:13:22:31	897	2.0	116.5
06:06:2002:13:24:31	1067	2.0	120.5
06:06:2002:13:26:32	957	2.0	124.6
06:06:2002:13:28:32	1012	2.0	128.6
06:06:2002:13:30:32	984	2.0	132.7
06:06:2002:13:32:32	943	2.0	136.7
06:06:2002:13:33:32	Shutdown		
06:06:2002:13:33:32	1030	2.1	138.7

Well: Quincy AMQ State # 9

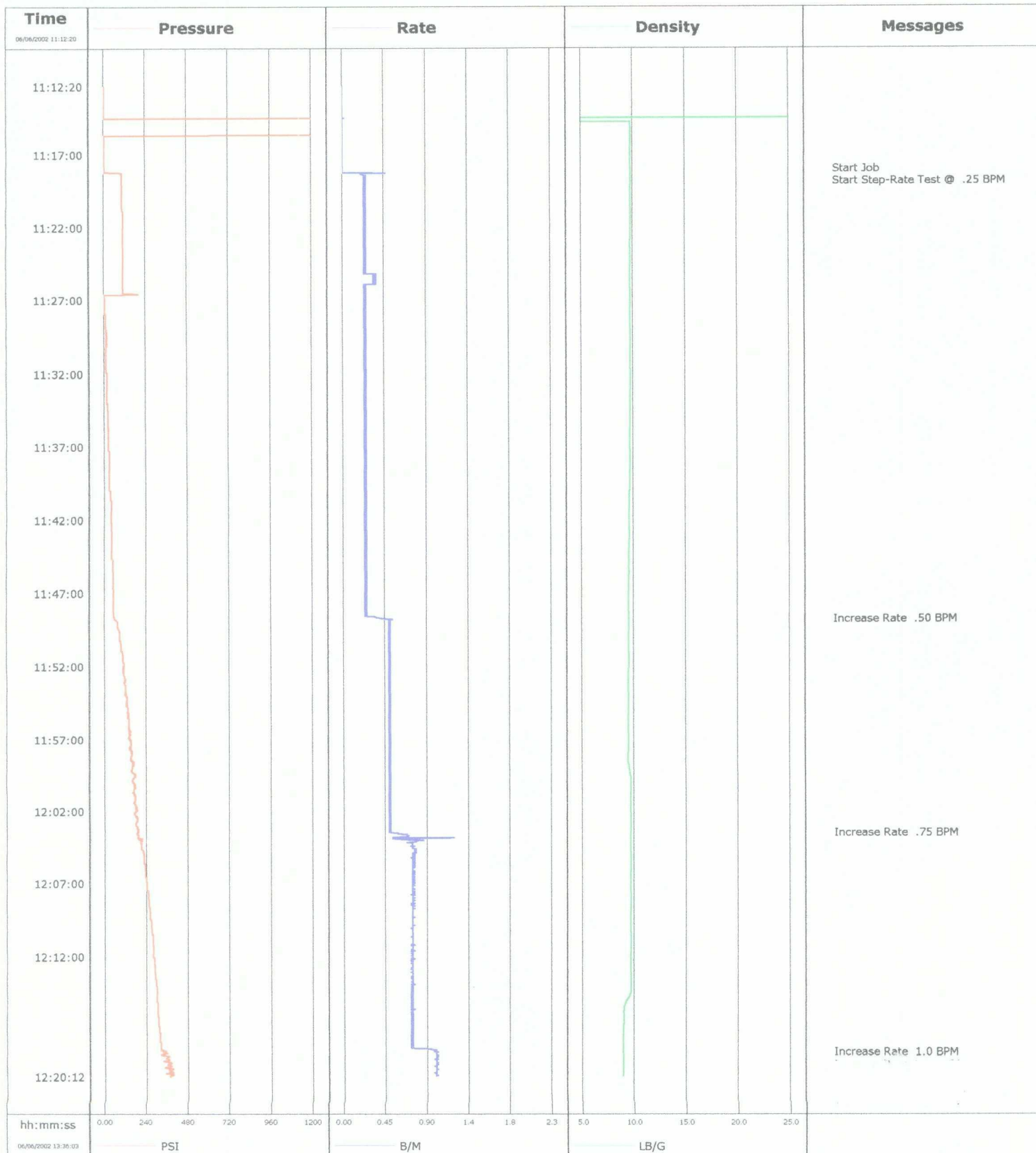
Job Date: 06-06-2002

Time mm:dd:yyyy:hh:mm:ss	Treating Pressure psi	Flow Rate bbl/min	Volume bbl
06:06:2002:13:34:32	906	0.0	138.8
06:06:2002:13:36:01	End Job		
06:06:2002:13:36:01	-128	0.0	138.8

Schlumberger Misc. Pumping Service Job Report

CemCAT v1.0

Well	Quincy AMQ State # 9	Client	Yates Petroleum
Field		SIR No.	2202040362
Engineer	Chris S. deLeon	Job Type	Step Rate Test
Country	United States	Job Date	06-06-2002

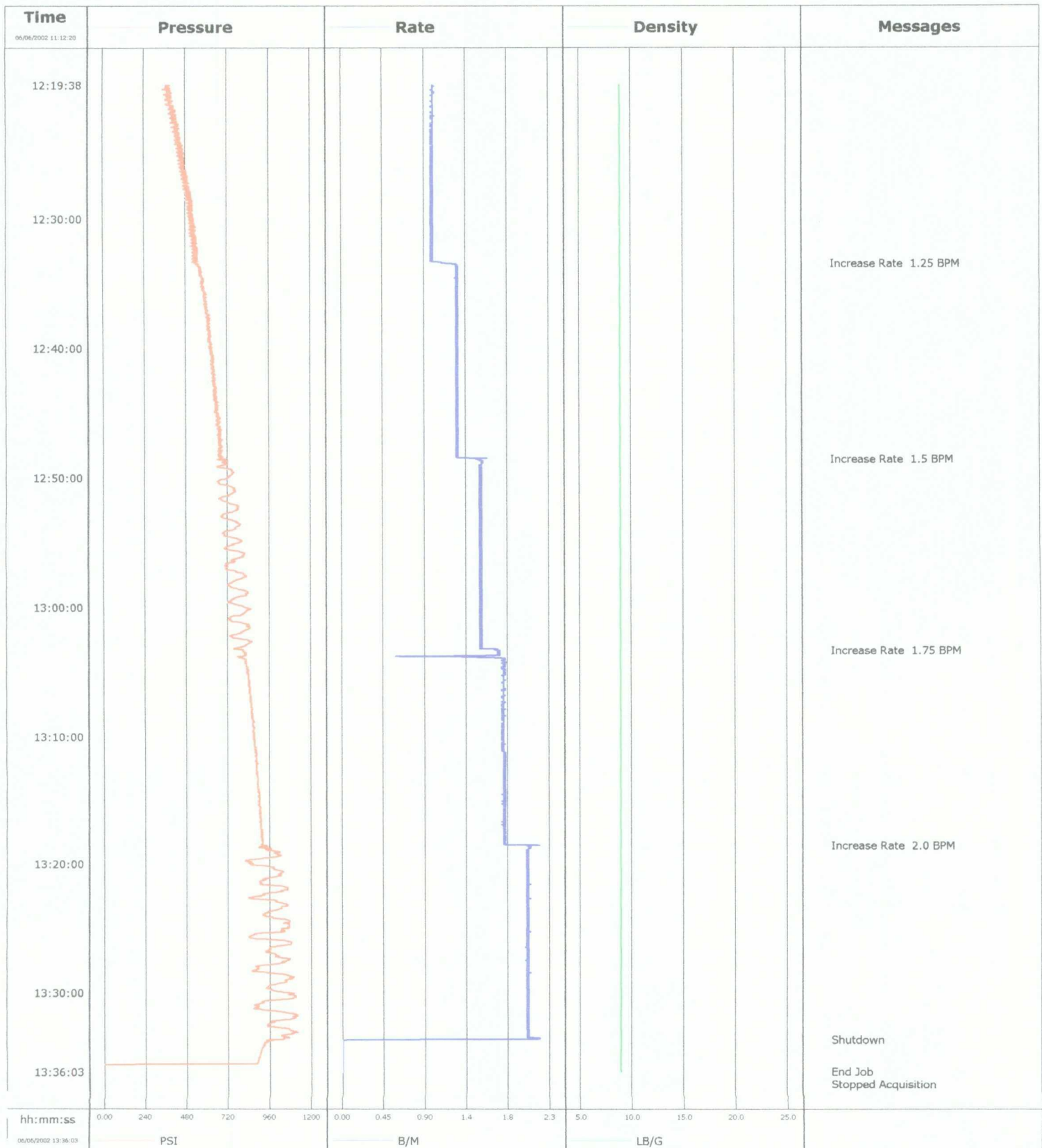


06/06/2002 13:43:22

Schlumberger Misc. Pumping Service Job Report

CemCAT v1.0

Well	Quincy AMQ State # 9	Client	Yates Petroleum
Field		SIR No.	2202040362
Engineer	Chris S. deLeon	Job Type	Step Rate Test
Country	United States	Job Date	06-06-2002



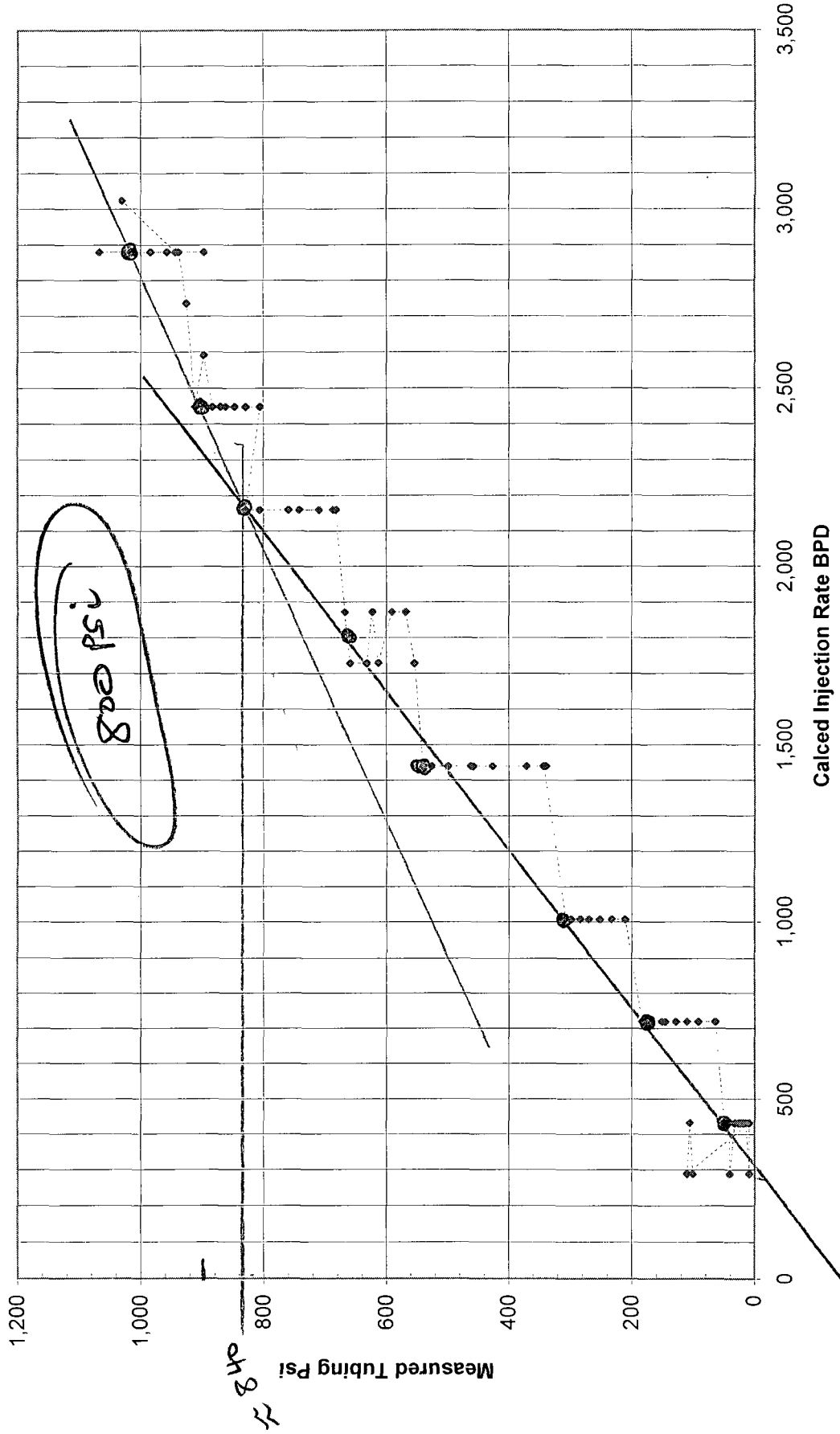
06/06/2002 13:39:36

Quincy "AMQ" State
Chaves County New Mexico
Sec 12-TS 8S-R 27E
Lease # 46199

Well Name & Number	Date	Perf's	After Acid		Acid Stim	Frac	After Frac ISDP
			ISDP				
QUINCY AMQ STATE #1	8/4/93 3/29/95	2143-2186 2143-2186	0 0		1500 G 20% NEFE 6000 G 20% NEFE		
QUINCY AMQ STATE #2	8/11/93 2/23/95	2172-2189 2172-2189	300 psi 0		2500 G 20% NEFE 6000 G 20% NEFE		
QUINCY AMQ STATE #3	9/1/93 9/2/93	2180-2199 2180-2199	1600 psi 1400 psi		1500 G 20% NEFE 10000 G 20% NEFE		
QUINCY AMQ STATE #4		2150-2190	700 psi		2500 G 20% NEFE		
QUINCY AMQ STATE #5		2157-2202	1500 psi		4000 G 20% NEFE		
QUINCY AMQ STATE #6		2154-2194	650 psi		6000 G 20% NEFE		
QUINCY AMQ STATE #7		2169-2197	1900 psi		10000 G 20% NEFE	131000# 20/40 Brady Sd	1700 psi
QUINCY AMQ STATE #8	3/14/95 4/26/95	2162-2182 2182-2214 2162-2214	1600 psi		5000 G 20% NEFE 10000 G 20% NEFE		
QUINCY AMQ STATE #9		2184-2229	1750 psi		2500 G 20% NEFE	225000# 20/40 Brady Sd	1870 psi
QUINCY AMQ STATE #10		2148-2200	1200 psi		2500 G 20% NEFE	200000# 20/40 Brady Sd	1640 psi
QUINCY AMQ STATE #11		2144-2198	2000 psi		3000 20% NEFE	200000# 20/40 Brady Sd	1600 psi
QUINCY AMQ STATE #12		2152-2196	1670 psi		10000 20% NEFE	200000# 20/40 Brady Sd	1940 psi
QUINCY AMQ STATE #13		2142-2192	1600 psi		2500 20% NEFE	225000# 20/40 Brady Sd	1630 psi
QUINCY AMQ STATE #14		2153-2206	1421 psi		3000 20% NEFE	400000# 20/40 Brady Sd	1783 psi
QUINCY AMQ STATE #15		2243-2372	1600 psi		2000 20% NEFE	340000# 20/40 Brady Sd	1800 psi
QUINCY AMQ STATE #16		2138-2177	1450 psi		7000 20% HCL		
QUINCY AMQ STATE #17		2161-2200	1120 psi		7000 205 HCL		

Quincy AMQ State No. 9
Order (Class): R-10349A (2R)
Formation: San Andres (2184 to 2229 feet).
Tubing: 2 7/8 IPC, 0.2 Psi/Ft = 436.8psi

**Yates Petroleum
Step Rate Test
6/6/2002**



PERFED 1 JS PF (0.42")
 (Ballack Acid Job 6/7/95 ISDP 1750 FSL
 50 MG 2/225# 20/40 FRAC DOWN CSE 55 BPM
 ISIP = 1870

8/9/95 connect w/w.

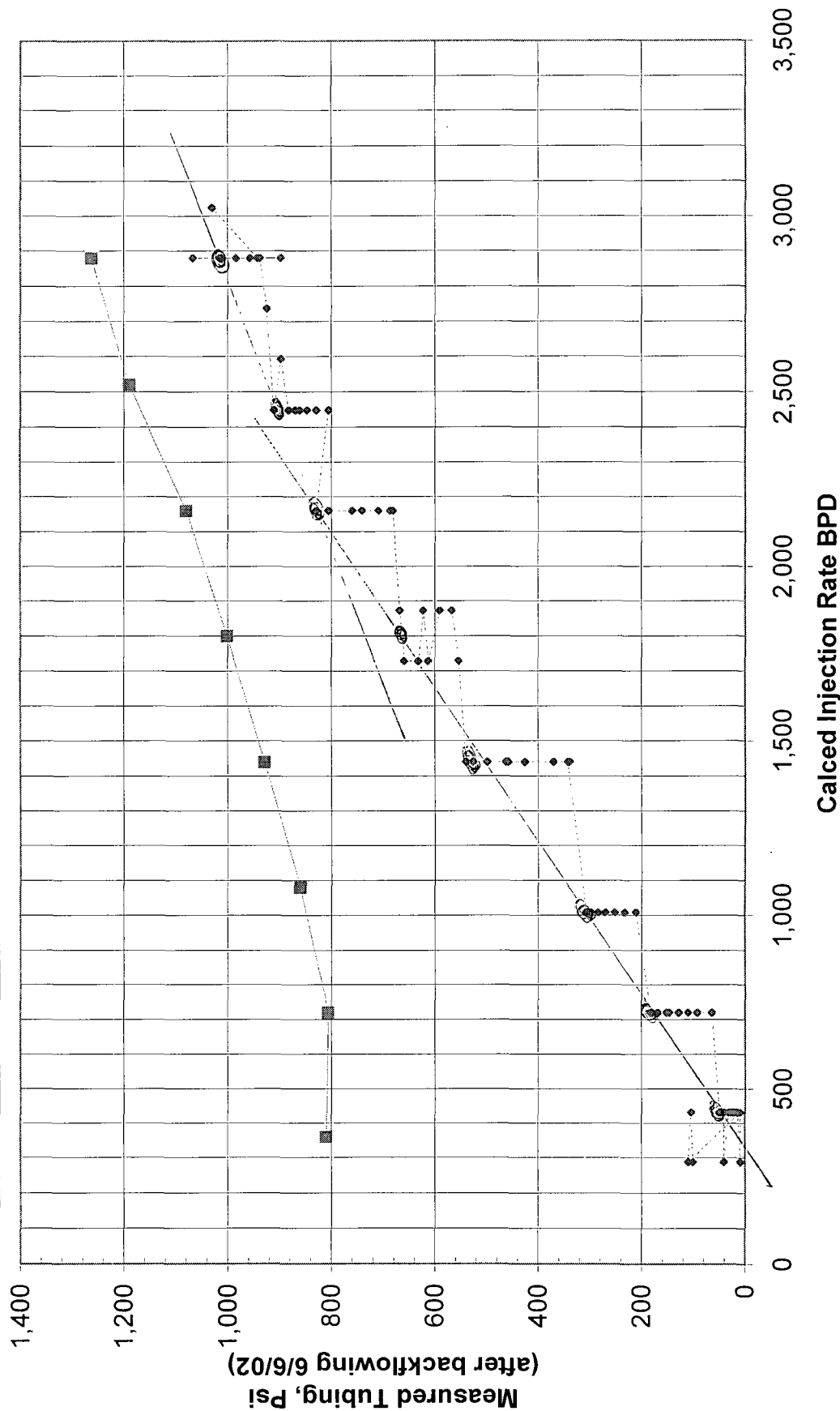
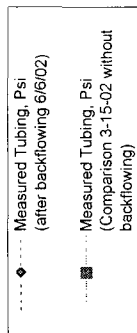
Quincy AMQ State No. 9

Order (Class): R-10349A (2R)

Formation: San Andres (2184 to 2229 feet)

Tubing: 2 7/8 IPC, 0.2 Psi/Ft = 436.8psi

Yates Petroleum Step Rate Test



April 15, 2002

Yates Petroleum Corporation
105 South Fourth Street
Artesia, New Mexico 88210

Attn: James W. Pringle

**RE: Injection Pressure Increase,
 Quincey "AMQ" State Well No. 9
 API No. 30-005-63052
 Chaves County, New Mexico**

Dear Mr. Pringle:

Reference is made to your request received March 20, 2002 to increase the surface injection pressure on the above referenced well. This request is solely based on data obtained from a step rate test conducted on March 15, 2002. The results of the test have been reviewed by my staff and we feel additional data is needed prior to allowing any increase in injection pressure on this well.

The submitted test's first step pressure (at rate 0.25 bpm) was interpreted to be 810 psig as compared to the currently permitted pressure of 437 psig. Please re-run the test and attempt to obtain initial pressures at or below the currently permitted 437 psig – if necessary by bleeding down the well. Additional data helpful in discerning surface formation fracturing pressure would be a listing of San Andres treatment ISIP's at this general depth and in this vicinity.

At this time your request for an injection pressure increase is denied and this application is being returned.

Sincerely,

Lori Wrotenbery
Director

LW/WVJ/kv

cc: Oil Conservation Division – Artesia
 Files: Order No. R-10349-A, IPI 2002

YATES PETROLEUM CORPORATION
CHRONOLOGICAL DRILLING REPORT
Quincy "AMQ" State #1
Unit E
12-8S-27E
Chaves County, New Mexico

7-24-25-93 Location: 2310' FNL & 330' FWL of Section 12-8S-27E, Chaves County, New Mexico. Lease No.: V-2982. Elevation: 3958' GR. PTD: 2200' San Andres. Drilling Contractor: United Drilling. Building location.

7-26-93 Prep to spud.

7-27-93 Drilling 10' redbed and anhydrite. Made 10' in 1 hour, 10'/hr. Drilling with air mist. Moved in and rigged up United Rig #2. Spudded at 3:00 PM 7-26-93. Set 10' 13-3/8" casing. Cemented with redi-mix to surface. WOC. DC \$11000; CC \$11000

7-28-93 TD 475' redbed and anhydrite. WOC. Made 465' in 11-1/2 hours, 40.4'/hr. Drilling with air mist. WOB 25000#, RPM 80. Resumed drilling 7:30 AM 7-27-93. Rig repair - compressor hose. TD 12-1/4" hole at 8:15 PM 7-27-93. Circ and blow hole. TOH. Ran 11 joints 8-5/8" 24# J-55 8rd R-3 (477') casing, set 475'. Texas Pattern Notched guide shoe set 475'. Insert float set 435'. Cemented with 150 sacks "C" + 1/4#/sx Celloseal + 2% CaCl2 (yield 1.32, weight 14.8). Tailed in with 100 sacks "C" + 2% CaCl2 (yield 1.32, weight 14.8). PD 11:45 PM 7-27-93. Bumped plug to 600 psi, float held OK. Circulated 75 sacks. WOC. DC \$14,763; CC \$25,763

7-29-93 Drilling 1620' lime and anhydrite. Made 1145' in 15-3/4 hours, 72.6'/hr. Drilling with air mist. Survey 1055' 3/4 deg. WOB 35K, RPM 70. WOC. Drilled out at 11:45 AM 7-28-93. WOC 12 hours. Reduced hole to 7-7/8" and resumed drilling. NOTE: Weld shoe and 3 joints. Centralizers on #1, 3, 5, and #7. PUMped 10 bbls gelled water ahead of cement. Notified NMOCD in Artesia, no witness. DC \$13,818; CC \$39,581

7-30-93 TD 2195' dolomite. TIH. Made 575' in 8-1/2 hours, 67.6'/hr. Drilling with air mist. Survey 1670' 1-1/4 deg and 2195' 1-1/4 deg. WOB 35K, RPM 70. Reached TD at 3:15 PM 7-29-93. Blow hole and flow test (13 gpm = 18.5 BPH). Rigged up kill truck and killed well with 100 bbls produced water. TOH for logs. Rigged up loggers. Well started flowing. Killed well. GIH with E-logs. TD 2155'. Rigged down Schlumberger. TIH with bit to wash out fill. Hole unloading in slugs. DC \$10,413; CC \$49,993

7-31/8-1-93 TD 2195'. Rigging down. TIH. Washed 50' to bottom and blow hole clean. Kill well. TOH for E-log. SLM 2195'. Rig up Schlumberger. Logger's TD 2195'. Ran 53 joints 5-1/2" 15.50# J-55 8rd R-3 (2208') casing, set at 2195'. Float shoe set 2195'. Float collar set 2149'. Cemented with 250 sacks Class "C" + .5% CF-14 (yield 1.34, weight 14.8). PD 10:30 PM 7-30-93. Bumped plug to 1000 psi for 5 mins, OK. Rig released 7:00 AM 7-31-93. DC \$21,350; CC \$71,343

8-2-93 Moving in service unit to complete well.

8-3-93 Cleaned location. Set and test anchors. Made cut off on 5-1/2" casing. Moved in and rigged up pulling unit. Installed casing head and BOP. Tested casing to 2000 psi. TIH with bit, drill collars and 2-7/8" tubing. Tag cement at 2078'. Rig up power swivel and drill out 73' of cement, float collar at 2151' and cement to float shoe at 2195'. TOH with 2-7/8" tubing, drill collars and bit. TIH with bit, scraper and 2-7/8" tubing to 2195'. Displace hole with 2% KCL water and test casing to 2000 psi for 10 mins. TOH with 2-7/8" tubing, scraper and bit. TIH with logging tools. Pressure casing to 1000 psi and ran CBL/CCL/GR log from 2195' to 900' (good bond). Rig down wireline. Prep to perforate and acidize if necessary. DC \$10,233

8-4-93 Rigged up wireline. TIH with 4" casing guns and perforated San Andres 2143-2186' (1 SPF) as follows: 2143', 44', 46', 47', 57', 61', 62', 63', 64', 68', 69', 70', 73', 74', 78', 79', 85', 86'. Well went on slight vacuum when perforated. TOH with casing guns and rig down wireline. TIH with packer and 2-7/8" tubing. Set packer at 2091' and test to 700 psi. Removed BOP and nipped up wellhead. Swabbed tubing dry. Wait 3 hours and made swab run. Fluid level 1300'. Recovered 4 bbls oil and 1/2 bbl water. Acidized perms 2143-86' with 1500 gals 20% NEFE acid + 24 balls. Breakdown 1600 psi. Balled out perms. Avg 3 BPM at 1600#. ISDP vacuum. Total load to recover 54 bbls. Rig up swab at 5:30 PM. Fluid level 300'. Made 1 run. Recovered 6 bbls water. Well kicked off flowing 260 psi on 3/4" choke at 5:45 PM. From 5:45 PM to 6:00 PM recovered 10 bbls water, then oil cut went to 90%. Put well on 1/4" choke at 6:00 PM and flowed all night as follows:

TIME	PSI & CHOKE	BO	BW	MCF
------	-------------	----	----	-----

7:00 PM	520# - 1/4"	9	10%	Strong
8:00 PM	540# - 1/4"	7	10%	Strong
9:00 PM	570# - 1/4"	7	5%	Strong
10:00 PM	590# - 1/4"	6	5%	Strong
11:00 PM	580# - 1/4"	6	5%	Strong
12:00 AM	590# - 1/4"	5	5%	Strong
1:00 AM	580# - 1/4"	6	5%	Strong
2:00 AM	580# - 1/4"	5	5%	Strong
3:00 AM	560# - 1/4"	5	5%	Strong
4:00 AM	560# - 1/4"	4	5%	Strong
5:00 AM	560# - 1/4"	4	5%	Strong
6:00 AM	560# - 1/4"	5	5%	Strong

Total recovered 72 bbls oil and 20-1/2 bbls water. Load left 33-1/2 bbls water. Continued flowing well. DC \$7511; CC \$17,744

8-5-93

Continued flowing well as follows:

TIME	PSI & CHOKE	BO	BW	MCF
7:00 AM	530# - 16/64"	2.5	5%	Strong
8:00 AM	550# - 16/64"	5	5%	Strong
9:00 AM	530# - 16/64"	5	5%	Strong
10:00 AM	530# - 16/64"	5	5%	Strong
11:00 AM	560# - 16/64"	5	5%	Strong
12:00 PM	560# - 16/64"	5	5%	Strong
1:00 PM	530# - 16/64"	5	5%	Strong
2:00 PM	530# - 16/64"	4	5%	Strong
3:00 PM	500# - 18/64"	6	0	Strong
4:00 PM	510# - 18/64"	9	0	Strong
5:00 PM	510# - 18/64"	7	0	Strong
6:00 PM	500# - 18/64"	8	0	Strong
7:00 PM	500# - 18/64"	7.5	0	Strong
8:00 PM	490# - 18/64"	12	0	Strong
9:00 PM	490# - 18/64"	9	0	Strong
10:00 PM	490# - 18/64"	8.5	0	Strong
11:00 PM	490# - 18/64"	8.5	0	Strong
12:00 AM	480# - 18/64"	8.5	0	Strong
1:00 AM	480# - 18/64"	8.5	0	Strong
2:00 AM	480# - 18/64"	8.5	0	Strong
3:00 AM	480# - 18/64"	8.5	0	Strong
4:00 AM	480# - 18/64"	8.5	0	Strong
5:00 AM	480# - 18/64"	8.5	0	Strong
6:00 AM	480# - 18/64"	8.5	0	Strong

Total recovered today 174-1/2 bbls oil and 1 bbl water. Load left 32-1/2 bbls water. Continued flowing well. DC \$3149; CC \$20,893

8-6-93

Turned well over to production. Rigged down pulling unit. DC \$595; CC \$29,923

8-6-93

TP 500# on 18/64" choke - flowed 125 bbls oil, 12 bbls water and 426 MCF.

8-7-93

TP 500# on 18/64" choke - flowed 201 bbls oil, 0 bbls water and 596 MCF.

8-8-93

TP 500# on 18/64" choke - flowed 214 bbls oil, 0 bbls water and 633 MCF.

8-11-93

No report.

8-12-93

No report.

8-13-93

No report.

8-14-16-93

No report.

8-17-93

No report.

8-18-93

No report.

8-19-93

No report.

8-20-93

TD 2195'; PBTD 2195'. On a 24 hour Official Potential test taken 8-6-93, well flowed 125 BOPD, 426 MCF/GPD and 12 BLW at a GOR of 3408, through perfs 2143-2186' San Andres. FINAL REPORT.

Yates Pet. - Quincy "AMQ" State #1 (Unit E) 12-8S-27E Chaves Co., NM

3-28-95	Moved in service unit to acidize San Andres and put well on pump.
3-29-95	Moved in and rigged up pulling unit. Loaded tubing with 2% KCL water. Nippled down wellhead and installed BOP. Unset packer. Dropped down and tagged bottom at 2190'. Pulled up and set packer at 2091'. Acidized perfs 2143-86' with 6000 gals 20% NEFE acid and 24 balls. Avg 3.2 BPM @ 0 psi. ISDP vacuum. Total load to recover 169 bbls. Unset packer. TOH with 2-7/8" tubing and packer. Turned well over to production to hang on pump. DC \$9487
3-30-95	No report.
3-31-95	No report.
4-1-3-95	Returned to production. <u>FINAL REPORT</u>

YATES PETROLEUM CORPORATION
CHRONOLOGICAL DRILLING REPORT
Quincy "AMQ" State #2
Unit D
12-8S-27E
Chaves County, New Mexico

8-2-93 Location: 990' FNL & 330' FWL of Section 12-8S-27E, Chaves County, New Mexico. API No.: 30-005-62973. Lease No.: V-2982. Elevation: 3981' GR. PTD: 2150' San Andres. Drilling Contractor: _____.
Drilling 4'. Drilling 17-1/2" hole for conductor. Moved in and rigged up. Made up bit. Spudded 6:30 AM 8-2-93.

8-3-93 Drilling 327' redbed and anhydrite. Drilling 12-1/4" hole - air mist. WOB 10000#, RPM 90. Set 10' conductor pipe. DC \$13,710; CC \$13,710

8-4-93 TD 450' redbed and anhydrite. Drilling cement and float. Made 123' in 2 hours, 61.5'/hr. Survey 450'. WOB 15000#, RPM 80. TD 12-1/4" hole at 9:45 AM 8-3-93. Blow hole clean. TOH. Ran 10 joints 8-5/8" 24# J-55 8rd R-3 (451') casing, set 450'. Texas Pattern Notched guide shoe set 450'. Insert float set 406'. Cemented with 150 sacks "C" + 1/4#/sx Celloseal + 2% CaCl₂ (yield 1.32, weight 14.8). Tailed in with 100 sacks "C" + 2% CaCl₂ (yield 1.32, weight 14.8). PD 1:00 PM 8-3-93. Bumped plug to 500 psi, float held OK. Circulated 65 sacks to pit. WOC. Drilled out 8:00 AM 8-4-93. WOC 19 hours. Nippled up and tested to 1000 psi for 30 mins, OK. Reduced hole to 7-7/8". NOTE: Notified NMOCD in Artesia of spud, casing and cement - no witnesses. DC \$5415; CC \$19,125

8-5-93 Drilling 1272' anhydrite and sand. Made 822' in 9-3/4 hours, 84.3'/hr. Drilling with air mist. Survey 1073' 1 deg. WOB 35000#, RPM 70. DC \$10,203; CC \$29,328

8-6-93 TD 1887' anhydrite and lime. Unloading hole. Made 615' in 9 hours, 68.3'/hr. Survey 1542' 3/4 deg. WOB 35000#, RPM 70. Had 900' fluid in hole. Est top of San Andres 1564'. DC \$7973; CC \$37,301

8-7-93 TD 2203' dolomite. Rigging up casing crew. Made 316' in 5 hours, 63.2'/hr. Drilling with air. Survey 2203' 1-1/2 deg. WOB 35000#, RPM 70. Unloaded hole - 1000' water. Circulated samples at 2188'. Reached TD 2:00 PM 8-6-93. TOH for logs. First log on bottom at 6:30 PM 8-6-93 (2003'). Shut in to let well bore have fluid entry. DC \$8134; CC \$45,435

8-8-93 TD 2203'. Rigging down. Ran 54 joints 15.50# J-55 8rd R-3 (2219') casing, set at 2203'. Float shoe set 2203'. Float collar set 2162'. Cemented in two stages as follows: Stage I - 250 sacks Class "C" + .5% CF-14 (yield 1.32, weight 14.8). PD 11:45 AM 8-7-93. Bumped plug to 1000 psi for 5 mins, OK. Rig released 4:00 PM 8-7-93. DC \$19,805; CC \$65,240

8-9-93 Waiting on completion unit.

8-10-93 Cleaned location. Set and test anchors and markers. Made cut off on 5-1/2" casing. Moved in and rigged up pulling unit. Installed casing head and BOP. Tested casing to 2000 psi for 6 mins. TIH with bit, drill collars and 2-7/8" tubing to cement at 2152'. Rigged up power swivel and drilled out 8' of cement, float collar at 2160' and 38' of cement to float shoe at 2200'. Tested casing to 2100 psi for 10 mins. TOH with 2-7/8" tubing, drill collars and bit. TIH with bit, scraper and 2-7/8" tubing to float shoe at 2200'. Displace hole with 2% KCL water. TOH with 2-7/8" tubing, scraper and bit. Rig up wireline. TIH with logging tools. Ran CNL log from 2200' to 50'. TOH with logging tools. TIH with logging tools. Pressure casing to 1000 psi and ran CBL/CCL/GR log from 2200' to 600'. Top of cement 800'. TOH with logging tools and rig down wireline. Shut down. Waiting on log evaluation to perforate. DC \$10,220

8-11-93 Rigged up wireline. TIH with 4" casing guns and perforated 1 SPF as follows: 2172', 73', 74', 75', 79', 80', 81', 83', 84', 85', 87', 88', 89' (13 holes). TOH with casing gun and rig down wireline. TIH with packer and 2-7/8" tubing. Set packer at 2122'. Removed BOP and nipped up wellhead. Rigged up swab. Made 3 swab runs and swabbed tubing dry. Recovered 12-1/2 bbls water. Wait 1 hour and made swab run. Tubing dry to SN. Shut down. Prep to acidize. DC \$2853; CC \$13,073

8-12-93 SITP 520#. Bled down in 10 mins. Initial fluid level 1700'. Recovered 1-1/2 bbls water with 5% oil cut. Good blow of gas. Acidized San Andres perms 2172-89' with 2500 gals 20% NEFE acid + 18 balls. Breakdown 2900#. Avg 3 BPM at 1000 psi. Balled out. ISDP 300 psi, 0 psi in 6 mins. Total load to recover 75 bbls. Fluid level at surface. Made 1 run and well kicked off flowing 200 psi on 3/4" choke. Put well on 3/8" choke at 11:25 AM. Flowed as follows:

TIME	TP/CHOKE	BO	BW	MCF
------	----------	----	----	-----

DRILLING REPORT

Page 2

Yates Petroleum - Quincy "AMQ" State #2 (Unit D) 12-8S-27E Chaves Co., NM

12:00 PM	225# - 3/8"	11	15	Good
1:00 PM	230# - 3/8"	19	1	Good
2:00 PM	320# - 1/4"	14	0	Good
3:00 PM	410# - 12/64"	7	0	Good
4:00 PM	475# - 12/64"	5	0	Good
5:00 PM	500# - 14/64"	6	0	Good
6:00 PM	500# - 14/64"	5	0	Good
7:00 PM	475# - 16/64"	5	0	Good
8:00 PM	475# - 16/64"	5	0	Good
9:00 PM	450# - 20/64"	3	0	Good
10:00 PM	370# - 24/64"	5	0	Good
11:00 PM	370# - 24/64"	5	0	Good
12:00 AM	350# - 24/64"	5	0	Good
1:00 AM	350# - 24/64"	5	0	Good
2:00 AM	350# - 24/64"	5	0	Good
3:00 AM	350# - 24/64"	5	0	Good
4:00 AM	350# - 24/64"	5	0	Good
5:00 AM	350# - 24/64"	5	0	Good
6:00 AM	350# - 24/64"	5	0	Good

Total recovered 16 bbls water and 125 bbls oil. Continued flowing. Load left 59 bbls water. DC \$6218; CC \$19,291

8-13-93 Turned well over to production to put on line. Rigged down pulling unit. DC \$479; CC \$19,770

8-14-16-93 No report.

8-17-93 No report.

8-18-93 No report.

8-19-93 No report.

8-20-93 TD 2203'; PBTD 2200'. On a 24 hour Official Potential test aken 8-16-93, well flowed 84 BOPD, 264 MCFGPD and 0 BWPD at a GOR of 3142, through perfs 2172-2189' San Andres. FINAL REPORT.

Yates Pet. - Quincy "AMQ" State #2 (Unit D) 12-8S-27E Chaves Co., NM

2-22-95 Moved in service unit to add additional pay.

2-23-95 Moved in service unit. Prep to acidize with 6000 gals and hang on pump.

2-23-95 Moved in and rigged up pulling unit. Bled well down. Nippled down tree. Nippled up BOP. Unset packer at 2122'. Dropped down and checked for fill, no fill. Moved up and set packer at 2122'. Rigged up and tested annulus to 500 psi, OK. Rigged up and acidized perfs 2172-2189' with 6000 gals 20% NEFE acid and 20 balls. AVg 0 @ 3 BPM. Balled out with 2nd set of balls. ISDP vacuum. Total load to recover 157 bbls. Rigged up swab and swabbed with the following results:

TIME	FL	#SR	OIL	WATER	GAS
6 PM	1500'	6	0	20	slight - acid gas
7 PM	1600'	6	10%	15	slight - acid gas
8 PM	1600'	6	50%	14	slight - burn
9 PM	1500'	6	70%	15	slight - burn
10 PM	1600'	6	75%	12	fair - burn
11 PM	scattered	4	75%	10	good - burn
12 AM	scattered	4	75%	11	good - burn
1 AM	scattered	4	75%	10	good - burn
2 AM	scattered	4	75%	9	good - burn
3 AM	scattered	3	75%	10	good - burn
4 AM	scattered	3	75%	9	good - burn
5 AM	scattered	3	75%	10	good - burn
6 AM	scattered	4	75%	9	good - burn
7 AM	scattered	3	75%	11	good - burn

Total recovered 58 bbls oil and 96 bbls water. Load left 61 bbls. Prep to hang on pump. DC \$10,935; CC \$10,935

2-25-95 Continued to swab with the following results:

TIME	FL	#SR	OIL	WATER	GAS
7 AM	scattered	3	75%	11	good - burn
8 AM	scattered	3	75%	9	good - burn
9 AM	scattered	3	75%	9	good - burn

Daily recovered 21 bbls oil and 8 bbls water. Total recovered 89 bbls oil and 104 bbls water. Load left 53 bbls. Rigged down swab. Unset packer 2122'. TOH with 2-7/8" tubing and packer. Turned well over to production to run rod pump. Production before workover 7 BOPD. Stabilized production after workover 33 BOPD. DC \$2835

2-26-27-95 No report.

2-28-95 No report.

3-1-95 No report.

3-2-95 No report.

3-3-95 No report.

3-4-6-94 Returned to production. FINAL REPORT

YATES PETROLEUM CORPORATION
CHRONOLOGICAL DRILLING REPORT
Quincy "AMQ" State #3
Unit D
12-8S-27E
Chaves County, New Mexico

8-23-93 Location: 990' FNL & 990' FWL of Section 12-8S-27E, Chaves County, New Mexico. Lease No.: V-2982. Elevation: 3978' GR. PTD: 2200' San Andres. Drilling Contractor: United #2. Prep to start location.

8-24-93 Building location.

8-25-93 TD 6'. Prep to resume drilling. Moved rig over hole. Drilled 17-1/2" hole to 6'. Set 6' of 13-3/8" conductor and grout in place.

8-26-93 TD 460' redbed. WOC. Made 460' in 8-1/4 hours, 55.7'/hr. Survey 460' 3/4 deg. WOB all, RPM 90. Resumed drilling 9:45 AM 8-25-93. TD 12-1/4" hole at 6:00 PM 8-25-93. Ran 10 joints 8-5/8" 24# 8rd J-55 ST&C (450') casing, landed at 460'. Texas Pattern Notched guide shoe set 460'. Insert float set 414.75'. Cemented with 150 sacks "C" + 1/4#/sx Celloseal + 2% CaCl₂ (yield 1.32, weight 14.8). Tailed in with 100 sacks "C" + 2% CaCl₂ (yield 1.32, weight 14.8). PD 9:45 PM 8-25-93. Bumped plug to 300 psi, float held OK. Circulated 70 sacks. WOC. DC \$15,410; CC \$21,910

8-27-93 Drilling 1982' San Andres. Made 1522' in 19-1/4 hours, 79'/hr. Drilling with air mist. Surveys 1020' 1-1/2 deg, 1549' 1-1/4 deg. WOB 35000#, RPM 70. Drilled out 10:00 AM 8-26-93. WOC 12 hours and 15 minutes. Cut off and weld on flow nipple. Reduced hole to 7-7/8". Top of San Andres approx 1562'. Making small amount of water. DC \$19,555

8-28-93 TD 2220' anhydrite. Unload and blow hole. Made 238' in 5-1/2 hours, 43.2'/hr. Drilling with air mist. Surveys 2044' 1 deg, 2220' 1 deg. WOB 35000#, RPM 70, PP 130#. Reached TD 1:45 PM 8-27-93. TOH for logs. Wait on loggers. Logs went to 2214'. TIH and unload hole. Washed 30' to bottom. 1200' water in hole. DC \$3737

8-29-93 TD 2220'. Rigging down. Ran 54 joints 5-1/2" 15.50# J-55 8rd R-3 (2227') casing, set 2227'. Float shoe set 2220'. Float collar set 2179'. Cemented with 250 sacks Class "C" + .5% CF-14 (yield 1.32, weight 14.8). PD 6:15 PM 8-28-93. Bumped plug to 1200 psi for 5 mins, float and casing held OK. Rig released 10:15 PM 8-28-93. DC \$17,950

8-30-93 Cleaned location. Set and test anchors and markers. Made cut off on 5-1/2" casing. Weld on 5-1/2" bell nipple. Prep to move in pulling unit. Dc \$1810

8-31-93 Moved in and rigged up pulling unit. Nippled up tubing head and installed BOP. TIH with bit, drill collars and 2-3/8" tubing to 2079'. Rigged up power swivel and drilled cement and float collar at 2179'. Drilled shoe joint out, down to 2216'. Tested casing to 2000 psi for 12 mins, OK. TOH with 2-7/8" tubing, drill collars and bit. TIH with bit, scraper and 2-7/8" tubing to 2216'. TOH with 2-7/8" tubing, scraper and bit. TIH with logging tool. Ran GR/CNL/CCL from 2216' to 1200'. TOH with logging tool. TIH with logging tool - correlate tool into place. Pressured casing to 1000 psi and ran GR/CBL/CCL from 2216' to 800'. TOH with logging tool. Shut down. Prep to perforate. DC \$4858; CC \$6668

9-1-93 TIH with 4" casing guns. Perforated 10 holes (1 SPF) as follows: 2180', 81', 85', 86', 87', 88', 2191', 95', 96', 99'. TOH with casing guns. TIH with packer and 2-7/8" tubing to 2198'. Spot 1 bbl of 20% NEFE acid across perfs 2180-2199'. Set packer at 2120'. Nippled down BOP. Nippled up flange. Acidized perfs 2180-2199' with 1500 gals 20% NEFE acid + 15 balls. Broke down 2700#. Avg 1800# at 3 BPM. Ball out last set of balls. ISDP 1600#, 5 mins 1400#, 10 mins 1350#, 15 mins 1250#. Total load to recover 50 bbls. Swabbed as follows -

TIME	FL	# SR	BO	BW	MCF	
3 PM	0# - 1/4"		Skim	24	Fair	
5 PM	1600'-SN	3	5%	5.5	Fair	acid gas
7 PM	1700'-SN	3	25%	3	Fair	burn
9 PM	1700'-SN	2	60%	3	Fair	burn
11 PM	1700'-SN	3	60%	3	Fair	burn
1 AM	1700'-SN	2	60%	2	Fair	burn
3 AM	1700'-SN	2	70%	2	Good	burn
5 AM	1700'-SN	2	70%	2	Good	burn

Total recovered 47 bbls water and 23 bbls oil. DC \$8202; CC \$14,870

WATER ANALYSIS: 8-31-93

Spec Gravity	1.150 @ 72	Resistivity	.035 @ 75
pH	5.05	Iron	250
Calcium	18435	Sulfate	739
Magnesium	17327	Tot Hardness	117391
Chloride	121712	Bicarbonate	509

DRILLING REPORT

Page 2

Yates Petroleum - Quincy "AMQ" State #3 (Unit D) 12-8S-27E Chaves Co., NM

	Sod & Pot	34467	Sod Chloride	200216
	KCL	ND	H2S	ND

9-2-93 Continued to swab with the following results:

TIME	FL	# SR	BO	BW	MCF
7 AM	1700-SN	2	70%	2	good - burn
9 AM	1700-SN	2	70%	2	good - burn
11 AM	1700-SN	2	70%	2	good - burn
1 PM	1700-SN	2	70%	2	good - burn
4 PM	1700-SN	3	70%	3	good - burn

Rigged down swab. Rigged up and acidized perms 2180-2199' with 10,000 gals 20% NEFE acid and 15 balls. Avg 1400 psi @ 3 BPM. Ball action slight. ISDP 1400 psi, 5 min 1400 psi, 10 min 1375 psi, 15 min 1375 psi. Total load to recover 254 bbls. Rigged up swab. Swabbed with the following results:

TIME	PSI	OIL	WATER	GAS
6 PM	800# - 1/4"	0	22	acid gas
8 PM	400# - 1/4"	skim	9	acid gas
10 PM	125# - 1/4"	2%	5	acid gas
Mid	50# - 1/2"	5%	3	acid gas

TIME	FL	# SR	BO	BW	MCF
1 AM	300-1200'	5	10%	20	acid gas
3 AM	1500-1600'	5	20%	12	fair - burn
5 AM	1600-1600'	4	25%	8	fair - burn
7 AM	1700-SN	3	25%	3	fair - burn

Total recovered 116 bbls water and 30 bbls oil - 138 bbls load left. DC \$12,643; CC \$27,513

WATER ANALYSIS: 9-2-93 1:00 AM

SP. Gravity	1.225 @ 70	Resistivity	0
pH	2.45	Iron	250
Sulfate	82	Calcium	26,122
Tot. Hardness	261,224	Magnesium	47,608
Bicarbonate	ND	Chloride	228,520
CALC	375,915	Sod & Pot	28,268
Tot Dis Sol	518,094	KCL	none det
H2S	none det		

*flow back water from acid job - 5% oil, 95% water.

9-3-93 Continued to swab with the following results:

TIME	FL	# SR	OIL	WATER	GAS
7 AM	1700'-SN	3	25%	3	fair - burn
8 AM	1600'-SN	3	25%	4	fair - burn
9 AM	1700'-SN	3	30%	3	fair - burn

Total recovered 123 bbls water and 33 bbls oil. Load left 131 bbls water. Unset packer at 2120'. Nippled down flange. Nippled up BOP. TOH with 2-7/8" tubing and packer. Turned over to production to run rod pump. DC \$2117; CC \$29,630

9-4-7-93 No report.

9-8-93 No report.

9-9-93 No report.

9-10-93 No report.

9-11-13-93 Pump testing.

9-14-93 Pump testing.

9-15-93 Pump testing.

9-16-93 Pump testing.

9-17-19-93 Pump testing.

9-20-93 TD 2220'; PBTD 2216'. On a 24 hour Official Potential test taken 9-8-93 well pumped 35 BOPD, 40 MCFGPD and 33 BWPD at a GOR of 1142, gravity N/A through perforations 2180-2199' San Andres. FINAL REPORT

YATES PETROLEUM CORPORATION
CHRONOLOGICAL DRILLING REPORT
Quincy "AMQ" State #4
Unit E
12-8S-27E
Chaves County, New Mexico

1-9-95 Location: 2310' FNL & 990' FWL of Section 12-8S-27E, Chaves County, New Mexico. API No.: 30-005-62985. Lease No.: V-2982. Elevation: 3952' GR. PTD: 2200' San Andres. Drilling Contractor: United #4. Dirt Contractor: Shull Oilfield Services. Building location.

1-10-95 Building location.

1-11-95 Building location.

1-12-95 Building location.

1-13-95 Waiting on rotary tools.

1-14-95 TD 239' sand. Start equipment. Made 239' in 5-1/2 hours, 43.4'/hr. WOB 10,000#, RPM 70, PP 100 psi. Rigged up rotary tools. Resumed drilling at _____. POOH. Shut down for night. DC \$5091; CC \$11,541

1-15-95 TD 455' redbed and sand. Drilled with airmist. WOC. Made 216' in 4 hours, 54'/hr. WOB 15-20K, RPM 70, PP 100. Start equipment. Circulated and TOOH. Rigged up casers and ran 13 joints 8-5/8" casing. Rigged up WCNA and cemented. WOC. Td 12-1/4" holes at 11:15 AM 1-14-95. DC \$10,950; CC \$22,491

1-16-95 Drilling 1393' redbed, salt and anhydrite. Made 941' in 16-1/2 hours, 57'/hr. Survey 452' 1-1/4 deg. WOB 30K, RPM 70, PP 125#. Started equipment. Backed out landing joint. Nippled up rotary head. TIH. Drilled cement and float. Drilled out at 1:00 PM 1-15-95. Rigged up mud logger. Had small amount of water at 680'. Dried up. DC \$13,765; CC \$36,256

DETAILED CASING REPORT: Ran and landed 13 joints 8-5/8" 24# 8R J 55 ST&C (440.67') casing. Landed at 448' with 15' landing joint. Texas Pattern Notched guide shoe set at 448'. Insert float set at 411.69'. Cemented with 180 sacks "C" with 1/4# celloseal + 2% CaCl₂ (yield 1.32, weight 14.8). Tailed in with 100 sacks "C" with 2% CaCl₂ (yield 1.32, weight 14.8). PD at 3:15 PM 1-14-95. Bumped plug to 700 psi, held OK. Circulated 120 sacks cement. WOC. Drilled out at 1:00 PM 1-15-95. WOC 21 hours 45 mins. Reduced hole to 7-7/8" and resumed drilling. NOTE: Ran 262.92' used 8-5/8" 24# casing and 177.75' new 8-5/8" casing.

1-17-95 TD 2100' lime and dolomite. Start equipment. prep to drill. Made 707' in 14-1/4 hours, 49.6'/hr. WOB 30,000#, RPM 70, PP 125#. Installed test line. Drilled. Installed 6" valve in flowline. Drilled. TOH. Drain equipment. Shut down for night. DC \$10,969; CC \$47,225

1-18-95 TD 2214' dolomite. Rigged down rotary tools. Made 114' in 3 hours, 38.5'/hr. WOB 30,000#, RPM 70. Unloaded hole. No water in hole. Drilled from 2100-2169' - gas show at 2152'. Puddle test at 2169' and unloaded hole. Puddle tested at 2189' and unloaded hole. Puddle tested at 2209'. Unloaded hole. Reached TD at 2:15 PM 1-17-95. Waited on orders. Laid down drill pipe and drill collars. Nippled down rotating head and flowline. Rigged up casers and ran 51 joints of used 5-1/2" casing. Rigged up WCNA. Break circulation and cemented. Rig released at 1:30 AM 1-18-95. DETAILED CASING REPORT TO FOLLOW. NOTE: Recovered 4 bbls water and 8 bbls oil during puddle testing). DMC \$2500; CMC \$2500; DC \$18,478; CC \$65,703

1-19-95 DETAILED CASING REPORT: Landed 51 joints used 5-1/2 17# J-55 LT&C (2225.40) casing, set at 2214'. Regular guide shoe set at 2214. Float collar set at 2208.27. Cemented with 25 sacks fresh water gel + 350 sacks C with 5/10% CF-14 (yield 1.32, weight 14.8). PD at 1:30 AM 1-18-95. Bumped plug to 1200 psi for 3 mins. Rig released at 1:30 AM 1-18-95.

1-20-95 Plan to move in on Monday.

1-21-23-95 Prep to rig up. WATER ANALYSIS: 1-20-95

Sp. Gravity	1.128 @ 70
Resistivity	0
pH	6.2
Iron	0
Sulfate	ND
Calcium	3191
Total Hardness	10,638
Magnesium	646
Bicarbonate	ND
Chloride	62,043
CALC	102,060
Sod & Pot	35,356

DRILLING REPORT

Page 2

Yates Pet. - Quincy "AMQ" State #4 (Unit E) 12-8S-27E chaves Co., NM

Total Diss Solids 108,037
H2S None
KCL 108,037
OIL GRAVITY 29 API

1-24-95 Cleaned location. Set and tested anchors. Made cut off on 5-1/2" casing. Moved in and rigged up pulling unit. Installed tubing head and BOP. Tested casing to 1500 psi. TIH with bit, scraper and 2-7/8" tubing to 2208'. Displaced casing with 2% KCL water. TOH with 2-7/8" tubing, scraper and bit. Rigged up wireline. TIH with logging tools. Ran CNL log from 2206-200'. TOH with logging tools. TIH with logging tools. Correlated tools into place. Pressured casing to 1000 psi and run CBL/CCL/GR log from 2204-100'. Good bond. TOH with logging tools and rigged down wireline. Shut down. Prep to perforate and acidize. DC \$8682

1-25-95 Rigged up wireline. TIH with 4" casing guns. Correlated guns into place and perforated San Andres P-1 (1 SPF) with 31 - .42" holes as follows: 2150-55' and 2168-92'. TOH with casing guns and rigged down wireline. TIH with packer and 2-7/8" tubing. Spotted acid across perfs 2150-92'. Pulled up set packer at 2086'. Removed BOP and nipped up wellhead. Acidized perfs 2150-92' with 2500 gals 20% NEFE acid and 75 balls. Break down 1600 psi. Avg 2.8 BPM @ 1000 psi, 300 psi increase with balls. ISDP 700 psi, 0 psi in 14 mins. Rig up swab. Initial fluid level surface. Made 1 swab run and well kicked off flowing. Flowed 25 minutes and died. Continued swabbing. Total load to recover 81 bbls water. Total recovered 57-1/2 bbls water and 10-1/2 bbls oil. Load left 23-1/2 bbls. Continue swabbing. Plan to shut in and run static bomb on Thursday. DC \$8704; CC \$77,930

Swab Report: IFL - 1 swab run & w4ell flowed 25 mins.

TIME	FL	No.	Swab	Oil	Water	Comments
1 PM	surface					
2 PM	1300'	3	2%	24		flows +/-

10 mins
after each
swab run

3 PM	1600'	3	2%	8		
4 PM	1800'	3	2%	5		
5 PM	1900'	2	2%	2		

SI, blow

gas

6 PM	1900'	2	3%	3		
7 PM	1800'	2	3%	3		
8 PM	1800'	2	5%	3		
9 PM	1800'	2	5%	2		
10 PM	1800'	2	5%	2		
11 PM	1800'	2	5%	2		
12 AM	1800'	2	5%	2		
1 AM	1800'	2	5%	2		
2 AM	1800'	2	80%	2		
3 AM	1800'	2	90%	2		
4 AM	1800'	2	90%	2		
5 AM	1800'	2	90%	2		
6 AM	1800'	2	90%	2		

1-26-95 Continued to swab till 9:00 AM. Swabbed as follows:

TIME	FL	#SR	OIL	WATER
7 AM	1800'	2	90%	2
8 AM	1800'	2	90%	2
9 AM	1800'	2	90%	2

Total recovered 16 bbls ol and 58 bbls water. Load left 23 bbls water. Rig down swab and shut well in. prep to run static BHP and hang on pump. DC \$629

1-27-95 Run static BHP. SITP 270 psi. Bled well down. Unset packer. TOH with 2-7/8" tubing and packer. TIH with tap bull plug, mud joint, perf sub, SN at 2165' and 2-7/8" tubing. Rigged up swab. Swabbed as follows:

TIME	FL	#SR	OIL	WATER
4 PM	1400'	3	5%	12
5 PM	1400'	3	10%	12
6 PM	1500'	3	10%	10
7 PM	1500'	3	10%	9
8 PM	1600'	3	10%	8
9 PM	1700'	3	10%	6
10 PM	1800'	3	20%	5
11 PM	1900'	2	80%	3
Mid	1900'	2	90%	2
1 AM	1900'	2	90%	2
2 AM	1900'	2	90%	2
3 AM	1900'	2	90%	2

• DRILLING REPORT

Page 3

Yates Pet. - Quincy "AMQ" State #4 (Unit E) 12-8S-27E chaves Co., NM

4 AM	1900'	2	90%	2
5 AM	1900'	2	90%	2
6 AM	1900'	2	90%	2

Prep to run pump and rods and hang well on pump. Total recovered 57 bbls water and 22 bbls oil. DC \$2434

1-28-95 Ran rods and pump. Turned well over to production to hang well on pump. DC \$877

1-31-95 No report.

2-1-95 No report.

2-2-95 No report.

2-3-95 No report.

2-4-95 No report.

2-4-6-95 No report.

2-8-95 No report.

2-9-95 Pumped 25 bbls oil, 3 bbls water and 20 MCF.

2-10-95 No report.

2-11-15-95 No report.

2-16-95 No report.

2-17-95 No report.

2-18-20-95 No report.

2-21-95 No report.

2-22-95 TD 2214'; PBTD 2208'. On a 24 hour Official Potential test taken on 2-20-95 well pumped 38 BOPD, 12 MCFGPD and 0 BWPD at a GOR of 316:1, Gravity N/A, through perforations 2150-2192' San Andres. WELL IS PRODUCING. FINAL REPORT

YATES PETROLEUM CORPORATION
CHRONOLOGICAL DRILLING REPORT
Quincy "AMQ" State #5
Unit E
12-8S-27E
Chaves County, New Mexico

1-14-16-95 Location: 1650' FNL & 990' FWL of Section 12-8S-27E, Chaves County, New Mexico. API NO.: 30-005-63037. Elevation: 3968' GR. PTD: 2200' San Andres. Drilling Contractor: United #4. Building location.

11-17-95 Waiting on rotary tools.

11-18-95 Prep to move in rotary tools.

1-19-95 Drilling 436 redbed. Made 43 6 in 10 hours, 43.6/hr. WOB all, RPM 70, PP 130. Moved in and rigged up rotary tools. Spudded 17-1/2 holes at 12:00 PM 1-18-95. Set 5 of 13-3/8 conductor. WOC 6-1/2 hours. Resumed drilling at 8:00 PM 1-18-95. Notified NMOCD in Artesia of spud and cement job. DC \$500; CMC \$500; DC \$6109; CC \$12,359

1-20-95 Drilling 892' anhydrite and redbed. Made 442' in 8-3/4 hours, 49.8'/hr. Survey 450' 1/2 deg. WOB 30K, RPM 70, PP 140#. TD 12-1/4" hole at 6:30 AM 1-19-95. Circulated and TOOH. Rigged up casing crew and ran 8-5/8" casing. Rigged up WCNA and cemented. WOC. TIH. Drilled out. DMC \$500; CMC \$1000; DC \$16,673; CC \$29,032
DETAILED CASING REPORT: Ran and landed 10 joints 8-5/8" 24# 8R J-55 ST&C (438.51') casing, landed at 447' with 14.60' landing joint. Texas Pattern Notched guide shoe set at 447'. Insert float set at 408.46'. Cemented with 150 sacks "C" + 1/4#/sx celloseal + 2% CaCl₂ (Yield 1.32, weight 14.8). Tailed in with 100 sacks "C" with 2% CaCl₂ (yield 1.32, weight 14.8). PD at 9:45 AM 1-19-95. Bumped plug to 600 psi, float held OK. Circulated 120 sacks to pit. WOC. Drilled out at 9:45 PM 1-19-95. WOC 12 hours. Backed out landing joint. Nippled up rotating head and flowline.

1-21-95 Drilling 2019' anhydrite and dolomite. Made 1127' in 22-1/2 hours, 50.5'/hr. WOB 30K, RPM 70, Pp 140#. Small water flow at 940'. Died at 1080'. DMC \$500; CMC \$1500; DC \$14,781; CC \$43,813

1-22-95 TD 2218' dolomite and anhydrite. Shut down for puddle test. Made 199' in 5-1/2 hours, 36'/hr. WOB 30K, RPM 70, PP 140#. Drilled to 2168'. Top P1 at approx 2156' by gas show. Shut down for puddle test. Slight gas show, no oil. Drilled from 2168-2188'. Puddle test - strong gas show, no oil. Drilled 2188-2208'. Puddle test - strong gas show, slight trace oil. Drilled 2208-2218'. Top of anhydrite separating P1 and P2. Puddle test - strong gas show, slight oil show. Total recovery while testing approx 10.5 bbls fluid, mostly mist water with skim of oil in test tank. Circulate hole clean. POOH with 8 stands. Shut down for night for puddle test. DMC \$1000; CMC \$2500; DC \$5139; CC \$48,942

1-23-95 TD 2218' dolomite and anhydrite. Waiting on orders. Made 0'. Finished puddle test at 2218'. Unloaded hole with strong gas odor - approx 2 bbls oil and 11 bbls water. Waited on cut brine. Loaded hole with 120 bbls cut brine. Circulated 5 bbls. TOOH for logs. SLM 2219'. Rigged up loggers and logged well. Log on bottom at 4:00 PM 1-22-95. Shut down for night. Wait on orders. NOTE: Chlorides range on recovery 50,000-80,000 ppm. DMC \$0; CMC \$2500; DC \$6753; CC \$55,705

1-24-95 TD 2218'. Rigged down rotary tools. Made 0'. Waited on orders. Rig repair. TIH. Laid down drill pipe and drill collars. Nippled down flowline. Rig repair. Rigged up casers and ran 5-1/2" casing. Rigged up WCNA and cemented. Set slips and cut off 5-1/2" casing. Rig released at 11:15 PM 1-23-95. DMC \$0; CMC \$2500; DC \$13,521; CC \$69,226
DETAILED CASING REPORT: Ran 56 joints used 5-1/2" 17# J-55 8R LT&C (2224.62') casing, set at 2218'. Regular guide shoe set at 2218'. Float collar set at 2213.30'. Cemented with 40 sacks Salt water gel + 300 sacks "C" + 1/2% CF-14 (yield 1.32, weight 14.8). PD at 10:15 PM 1-23-95. Bumped plug to 1250 psi for 3 mins. Rig released at 11:15 PM 1-24-95. Waiting on completion unit.

1-25-95 Waiting on completion unit.

1-26-95 Waiting on completion unit.

1-27-95 Moved in service unit to clean out well.

1-28-30-95 Moved in service unit today. Plan to perf and acidize Tuesday.

1-31-95 Cleaned location and set anchors. Made cut off on 5-1/2" casing. Moved in and rigged up pulling unit. Installed tubing head and BOP. Tested casing to 1000 psi. TIH with bit, scraper and 2-7/8" tubing to 2206'. Displaced casing with 2% KCL water. TOH with 2-7/8" tubing, scraper and bit. Rigged up wireline. TIH with logging tools. Correlated tools into place and run CCL/GR logs from 2206' to 447'. TOH with logging tools and rigged down wireline. Prep to perforate and acidize with 4000 gals. DC \$6154

DRILLING REPORT

Page 2

Yates Pet. - Quincy "AMQ" State #5 (Unit E) 12-8S-27E Chaves Co., NM

2-1-95 Rigged up wireline. TIH with casing guns. Correlated guns into place and perforated San Andres (1 SPF) with 36 - .42" holes as follows: 2157-63' and 2174-2202'. TOH with casing guns and rigged down wireline. TIH with packer and 2-7/8" tubing. Spotted acid across perfs. Pulled up and set packer at 2083'. Removed BOP and nipped up wellhead. Acidized perfs 2157-2202' with 4000 gals 20% NEFE acid and 72 balls. Breakdown 2400 psi. AVg 3 BPM @ 1800 psi. ISDP 1500 psi, 15 mins 200 psi. Total load to recover 122 bbls. Bled well down and rigged up swab. Initial fluid level surface. Swabbed as follows:

TIME	FL	#SR	OIL	WATER
4 PM	120 psi	1	5%	20
5 PM	40 psi	0	10%	10
6 PM	1200'	4	10%	10
7 PM	1400'	4	80%	8
8 PM	1400'	4	80%	8
9 PM	1400'	4	80%	8 - sl blow gas
10 PM	1500'	3	80%	5 - sl blow gas
11 PM	1500'	3	80%	5 - sl blow gas
12 AM	1700'	3	90%	4 - sl blow gas
1 AM	1700'	3	90%	4 - sl blow gas
2 AM	1700'	3	90%	4 - sl blow gas
3 AM	1700'	3	90%	4 - sl blow gas
4 AM	1700'	3	90-100%	4 - sl blow gas
5 AM	1700'	3	90-100%	4 - sl blow gas
6 AM	1700'	3	90-100%	4 - sl blow gas

Total recovered 46 bbls water and 56 bbls oil. Load left 76 bbls water. Prep to TOH with 2-7/8" tubing and packer and hang well on pump. DC \$9023

2-2-95 Nipped down wellhead and installed BOP. Unset packer. TOH with 2-7/8" tubing and packer. Turned well over to production to hang well on pump. DC \$1660

2-2-95 No report.

2-3-95 No report.

2-4-6-95 No report.

2-8-95 No report.

2-9-95 Pumped 69 bbls oil, 6 bbls water and 42 MCF.

2-10-95 No report.

2-11-15-95 No report.

2-16-95 No report.

2-17-95 No report.

2-18-20-95 No report.

2-21-95 No report.

2-22-95 TD 2218'; PBTD 2206'. On a 24 hour Official Potential test taken 2-20-95 well pumped 54 BOPD, 22 MCFGPD and 9 BWPD at a GOR of 407:1, Gravity N/A, through perforations 2157-2202' San Andres. WELL IS PRODUCING.

FINAL REPORT

YATES PETROELUM CORPORATION
CHRONOLOGICAL DRILLING REPORT
Quincy "AMQ" State #6
Unit F
12-8S-27E
Chaves County, New Mexico

2-3-95 Location: 2310' FNL & 1650' FWL of 12-8S-27E, Chaves County, New Mexico. API No.: 30-005-63036. Elevation: 3947' GR. PTD: 2200' San Andres. Drilling Contractor: United #4. Dirt Contractor: Shull Construction. Building location.

2-4-6-95 Building location.

2-7-95 Waiting on rotary tools.

2-8-95 Moving in rotary tools.

2-9-95 Prep to resume drilling.

2-10-95 TD 475' surface. Prep to run casing. Made 475' in 11 hours, 43.18'/hr. Drilling with air. WOB all, RPM 65. Spudded in at 8:00 AM 2-8-95. TD surface hole at 7:00 PM 2-9-95. TOH and shut down operations. DC \$5763; CC \$12,063

2-11-95 TD 475'. WOC. Made 0'. Started equipment. TOH. Rigged up casing crew. Ran 8-5/8" casing. Rigged down casing crew. Rigged up WEstern. Cemented. WOC and rigged up rotating head. DC \$9079; CC \$21,142

2-12-95 Drilling 1215'. Made 740' in 8-3/4 hours, 84.57'/hr. Survey 1000' 1 deg. WOB 40,000#, RPM 65, PP 150#. Started equipment. Drilled insert float and cement. Drilled formation. TOH 60' and shut down equipment. DMC \$500; CMC \$500; DC \$9335; CC \$30,477
DETAILED CASING REPORT: Ran 11 joints 8-5/8" 24# J-55 (471.04') casing, set at 463.50'. Texas Pattern Notched guide shoe set at 463.50'. Insert float set at 417.35'. Cemented with 150 sacks Class "C" + 2% CaCl2 + 1/4#/sx Celloseal (yield 1.33, weight 14.8). Tailed in with 100 sacks Class "C" Neat with 2% CaCl2 (yield 1.33, weight 14.8). PD at 11:20 AM 2-10-95. Bumped plug to 750 psi, float did not hold. Circulated 126 sacks to pit. WOC. Drilled out at 10:00 AM 2-11-95. WOC 23 hours 20 minutes. Cut off and weld on flow nipple. Reduced hole to 7-7/8" and resumed drilling.

2-13-95 TD 1840' anhydrite and dolomite. Start equipment and prep to drill. Made 625' in 10-1/4 hours, 60.9'/hr. WOB 40K, RPM 65, PP 150#. Start equipment. Weld valve in flowline. Shut down overnight. Top of San Andres 1568'. DMC \$500; CMC \$1000; DC \$14,674; CC \$45,151

2-14-95 TD 2195' dolomite. Start equipment. Prep to unload hole. Made 355' in 7-1/2 hours, 47.3'/hr. WOB 40K, RPM 65, PP 150#. Started equipment. TIH with 5 stands. Puddle test at 2175'. Recovered slight show of gas and 2 bbls water, no oil. Circulated. POOH with 5 stands. Shut down for night and puddle test well. Top of P1 at 2155' by mudlogger's gas show. Had strong gas show and slight oil show while drilling 2175-2195'. Puddle testing overnight. DMC \$500; CMC \$1500; DC \$5756; CC \$50,907

2-15-95 TD 2220' dolomite. Rigged down and moved off rotary tools. Made 25' in 3/4 hours, 33'/hr. WOB 40K, RPM 65, PP 150#. Started equipment. Unloaded hole at 1995'. Recovered approx 25 bbls fluid. Puddle test at 2210'. Recovered approx 5 bbls oil and air mist emulsion. Reach TD at 11:30 AM 2-14-95. Circulated. Laid down drill pipe and drill collars. Nippled down rotary head. Rigged up casers and ran 5-1/2" casing. Rigged up WCNA and cement. Set slips, break out test line and cut off 5-1/2" casing. DMC \$500; CMC \$2000; DC \$13,478; CC \$64,385
DETAILED CASING REPORT: Ran 56 joints 5-1/2" 17# J-55 8rd LT&C used (2222.82') casing, set at 2220'. Regular guide shoe set at 2220'. Float collar set at 2215.29'. Cemented with 25 sacks FW gel + 300 sacks "C" with 1/2% CF-14A (yield 1.32, weight 14.8). PD at 7:00 PM 2-14-95. Bumped plug to 1300 psi for 3 mins. Rig released at 8:00 PM 2-14-95. TOC calculated to 400'.

Moved in service unit Thursday to complete in San Andres.

2-16-95 Cleaned location. Set and tested anchors. Set slips and installed casing head. Made cut off on 5-1/2" casing. Prep to move in and rig up pulling unit. DC \$1860

2-17-95 Moved in and rigged up pulling unit. Installed tubing head and BOP. Tested casing to 1500 psi for 10 mins. Picked up and TIH with bit, scraper and 2-7/8" tubing to 2209'. Displaced casing with 2% KCl water. TOH with 2-7/8" tubing, scraper and bit. Rigged up wireline. TIH with logging tools. Run CNL/CCL/GR log from 2209-450'. TOH with logging tools and rigged down wireline. Prep to evaluate logs. Will perf and acidize on Monday. DC \$8025

DRILLING REPORT

Page 2

Yates Pet. - Quincy "AMQ" State #6 (Unit F) 12-8S-27E Chaves Co., NM

2-18-95 Evaluate logs and picked perfs. Run acid emulsion test on oil. Set up to perforate and acidize on Monday AM.

2-21-95 Rigged up wireline. TIH with 4" casing guns. Correlated guns into place and perforated San Andres (2 SPF) with 72 - .42" holes from 2154-64' and 2169-94'. TOH with casing guns and rigged down wireline. TIH with packer and 2-7/8" tubing. Spotted 2 bbls 20% NEFE acid at 2198'. Pulled up and set packer at 2059'. Removed BOP and nipped up wellhead. Acidized perfs 2154-94' with 6000 gals 20% NEFE acid and 150 ball sealers. Breakdown 1060 psi. Avg 3.1 BPM @ 800 psi. 1st set of balls, 35 psi increase. 2nd set of balls 430 psi increase. 3rd set of balls 640 psi increase. ISDP 650 psi, 15 mins 145 psi. Total load to recover 172 bbls. Opened well on 1/2" choke. Flowed and swabbed well to swab tank as follows:

TIME	PSI/CHOKE	OIL	WATER
3 PM	190# - 1/2"	5%	44
4 PM	95# - 1/2"	40%	22
5 PM	60# - 1/2"	45%	9
6 PM	50# - 1/2"	45%	8
7 PM	50# - 1/2"	45%	8
8 PM	50# - 1/2"	45%	6
9 PM	50# - 1/2"	45%	6
10 PM	50# - 1/2"	50%	7
11 PM	70# - 1/2"	50%	21*
12 AM	60# - 1/2"	50%	20*
1 AM	60# - 1/2"	50%	20*
2 AM	70# - 1/2"	50%	22*
3 AM	70# - 1/2"	50%	20*
4 AM	60# - 1/2"	50%	19*
5 AM	60# - 1/2"	50%	20*
6 AM	70# - 1/2"	50%	22*

*Made 1 swab run and put well back on 1/2" choke.

NOTE: Oil percentage taken from wellhead sample and total oil was color cut in swab tank.

Total recovered 161 bbls water and 113 bbls oil. Load left 11 bbls water. Prep to TOH with tubing and packer and hang well on pump. Need to drill offsets. DC \$10,514

2-22-95 Continued flowing well as follows:

TIME	PSI/CHOKE	OIL	WATER
7 AM	80# - 1/2"	50%	20
8 AM	50# - 1/2"	50%	11
9 AM	30# - 1/2"	50%	6
10 AM	0# - 1/2"	50%	2

Total recovered today 18 bbls oil and 21 bbls water. Nipped down wellhead and installed BOP. Unset packer. TOH 2-7/8" tubing and packer. Turned well over to production and put well on pump. In 14 hours made 30 bbls oil and 65 bbls water. DC \$2201

2-23-95 Pumping.

2-24-95 Pumping.

2-25-27-95 No report.

2-28-95 Pumping.

3-1-95 Pumping.

3-2-95 Pumping.

3-3-95 Pumping.

3-4-6-95 Pumping.

3-7-95 Pumping.

3-8-95 TD 2220'; PBD 2209'. On a 24 hour Official Potential test taken 3-6-95 well pumped 72 BOPD, 26 MCFGPD and 90 BWPD at a GOR of 361:1, Gravity N/A, through perforations 2154-2194' San Andres. WELL IS PRODUCING.

FINAL REPORT

YATES PETROLEUM CORPORATION
CHRONOLOGICAL DRILLING REPORT
Quincy "AMQ" State #7
Unit F
12-8S-27E
Chaves County, New Mexico

Location: 1650' FNL & 1650' FWL of Section 12-8S-27E, Chaves County, New Mexico. API No.: 30-005-63050. Elevation: 3956'. PTD: 2200' San Andres. Drilling Contractor: United Rig #4.

3-10-95 TD 287'. Shut down. Made 287' in 6-3/4 hours, 42.51'/hr. Drilling with air mist. Spudded in at 12:00 PM 3-9-95. Resumed drilling. TOH with 180' and shut down equipment. DC \$4676; CC \$11,126

3-11-95 TD 287'. Started equipment. Made 0'. Rig was shut down for 24 hours. Rig crew was attending safety and first aid seminar. DC \$0; CC \$11,126

3-12-95 TD 460'. Start equipment. Made 173' in 5-3/4 hours, 29'/hr. Drilling with air mist. WOB all, RPM 80, PP 150#. Started equipment and TIH 180'. Drilled. TOH. Rigged up casing crew. Ran 8-5/8" casing. Rigged up Western and cement. WOC. DC \$11,026; CC \$22,152

3-13-95 TD 890'. Start equipment. Made 349' in 4-1/4 hours, 85'/hr. Drilling with air mist. WOB 35,000#, RPM 65, PP 150#. WOC and nipped up rotating head. Drilled out. TOH and shut down equipment. DMC \$4825; CC \$26,977

DETAILED CASING REPORT: Ran 10 joints 8-5/8" 24# J-55 (460.58') casing, set at 460'. Texas Pattern Notched guide shoe set at 460'. Insert float set at 413.96'. Cemented with 125 sacks Class "C" + 2% CaCl2 + 1/4#/sx celloseal (yield 1.32, weight 14.8). Tailed in with 125 sacks Class "C" + 2% CaCl2 (yield 1.32, weight 14.8). PD at 5:32 PM 3-11-95. Bumped plug to 950 psi, float held OK. Circulated 110 sacks to pit. WOC. Drilled out 2:30 PM 3-12-95. WOC 15 hours. Cut off and weld on flow nipple. Reduced hole to 7-7/8" and resumed drilling.

3-14-95 TD 1759' anhydrite. Service rig. Made 869' in 11-1/4 hours, 77'/hr. Drilling with air mist. WOB 35K, RPM 65, PP 150#. TIH - service rig. Drilled. TOH for night. DC \$11,637; CC \$38,614

3-15-95 TD 2084' anhydrite. Service rig. Made 325' in 7-1/2 hours, 43'/hr. Drilling with air mist. WOB 35K, RPM 65, PP 170#. Started equipment and service rig. Drilled. TOH and TIH with bit #3 at 2000'. Reamed 30' to bottom. Drilled. TOH for night. DC \$5723; CC \$44,337

3-16-95 TD 2220' anhydrite. Service rig. Made 136' in 4 hours, 34'/hr. Drilling with air mist. BGG 20, Max 50. WOB 35K, RPM 65, PP 150#. Started equipment and service rig. Drilled. Circulated. Tested at 2170' - recovered 2 bbls drilling fluid. Drilled. Circulated. Tested at 2190' - no recovery. Drilled. Circulated. Tested at 2210' - no recovery. TD at 3:00 PM MDT 3-15-95. Circulated. TOH 187'. Shut down for overnight test. DC \$3842; CC \$48,179

3-17-95 TD 2220'. Rigged down. Started equipment. Unloaded hole. Recovered 1 bbl oil and 3-1/2 bbls drilling fluid. Laid down drill pipe and drill collars. Rigged up casing crew. Ran 5-1/2" casing. Rigged up Western and cemented. Nipped down and set slips. Rig released. DC \$22,341; CC \$70,520

DETAILED CASING REPORT: Reached TD at 3:00 PM 3-15-95. Ran 52 joints 5-1/2" 15.50# J-55 8rd LT&C (2225') casing, set at 2225'. Regular guide shoe set at 2220'. Float collar set at 2215'. Cemented with 350 sacks Class "C" + .5% CF-14 (yield 1.32, weight 14.8). PD at 1:30 PM 3-16-95. Bumped plug to 1400 psi for 5 mins. Circulated 20 sacks cement. Float and casing held OK. Rig released at 4:00 PM 3-16-95. NOTE: Sandblasted pipe across pay. Centralizers on #1, #3, #5, #7 and #9. Good circulation. Shoe joint 5' long.

Move in service unit to complete in San Andres.

3-18-20-95 Move in service unit to complete in San Andres.

3-21-95 Cleaned location. Set and tested anchors. Made cut off on 5-1/2" casing. Moved in and rigged up pulling unit. Installed tubinghead and BOP. Tested casing to 2000 psi. TIH with bit, scraper and 2-7/8" tubing to 2215'. Displaced casing with 2% KCL water. TOH with 2-7/8" tubing, scraper and bit. Prep to perforate and acidize San Andres down casing with 10,000 gals. Plan to hang on pump immediately.

3-22-95 Rigged up wireline. TIH with 4" casing gun and correlated guns into place and perforated (1 SPF) with 13 - .42" holes in the San Andres as follows: 2169', 70', 71', 79', 81', 83', 85', 87', 89', 91', 93', 95' and 97'. TOOH with guns and rigged down wireline. TIH with 2-7/8" tubing to 2196'. Spotted 30 bbls 20% NEFE acid. Acidized perms 2169-2197' with 10,000 gals 20% NEFE acid. Break down 3500 psi. Avg 21 BPM @ 3700#. ISDP 1900#, 15 mins 1450#. Total load to recover 307 bbls.

DRILLING REPORT

Page 2

Yates Pet. - Quincy "AMQ" State #7 (Unit F) 12-8S-27E Chaves County, NM

Bled well down. Turned well over to production to hang well on pump.
Well was pumping by 7:00 PM Tuesday evening. DC \$17,746

3-23-95 No report.
3-24-95 No report.
3-25-27-95 No report.
3-28-95 No report.
3-29-95 No report.
3-30-95 No report.
3-31-95 No report.

4-7-95 Testing - prep to frac.
4-10-95 Move in service unit to frac San Andres.
4-11-95 Move in service unit and tanks for frac. Prep to frac Wednesday.
4-12-95 Dig and fence pit. Moved in and rigged up pulling unit. TOH with rods and pump. Nippled down wellhead and installed BOP. TOH with 2-7/8" tubing. Shut down. Prep to frac San Andres perms. DC \$3827

4-13-95 Rigged up wireline. TIH with 4" casing guns and perf'd 2180-2190' with 40 - .42" holes (4 SPF). TOOH with casing guns. Rigged down wireline. Removed BOP and installed frac head. Frac'd San Andres perms 2169-97' with 69000 gals 30# crosslink gel and 131,000# 20/40 Brady sand. Avg 31 BPM at 3150#. ISDP 1700#. Force close for 30 mins. Shut in. Prep to bleed well down, clean sand out of casing and hang well on pump. TLTR 1666 bbls water. DC \$43,866

4-14-95 SICP 750 psi. Opened well on 1/4" choke and bled well down to pit. Well bled down to 0 psi on 4-1/2 hours. Removed frac head and installed BOP. TIH with 2-7/8" tubing. Tagged sand at 2177'. Reversed 36' of sand out of casing to 2213'. TOH with 2-7/8" tubing. TIH with production string. Turned well over to production to run pump and rods. Pump on at 7:00 PM Thursday evening. Observing no gel in fluid. Pumped 165 bbls fluid in 11 hours. DC \$2882

4-15-17-95 Pumping.
4-18-95 Pumping.
4-19-95 Pumping.
4-20-95 Pumping.
4-21-95 Pumping.
4-22-24-95 Pumping.
4-25-95 Pumping.
4-26-95 Pumping.
4-27-95 Pumping.
4-28-95 Pumping.
4-29/5-1-95 Pumping.
5-2-95 Pumping.
5-3-95 Pumping.
5-4-95 Pumping.
5-5-95 Pumping.
5-6-8-95 Pumping.
5-9-95 Pumping.
5-10-95 Pumping.
5-11-95 Pumping.
5-12-95 Pumping.
5-13-15-95 Pumping.
5-16-95 Pumping. TEMPORARILY DROPPED FROM REPORT.

5-26-95 TD 2220'; PBTD 2215'. On a 24 hour Official Potential test taken 4-17-95 well pumped 35 BOPD, 6 MCFGPD and 30 BWPD at a GOR of 171:1, Gravity 28.5 deg, through perforations 2169-2197' San Andres. WELL IS PRODUCING. FINAL REPORT

YATES PETROLEUM CORPORATION
CHRONOLOGICAL DRILLING REPORT
Quincy "AMQ" state #8
Unit F
12-8S-27E
Chaves County, New Mexico

2-28-95 Location: 2310' FNL & 2310' FWL of Section 12-8S-27E, Chaves County, New Mexico. API No.: 30-005-63051. Elevation: 3941'. PTD: 2200' San Andres. Drilling Contractor: United #4. Building location.

3-1-95 Building location. Dirt Contractor: Shull Construction.

3-2-95 Prep to resume drilling.

3-3-95 TD 210'. Prep to resume drilling. Made 210' 4-1/2 hours, 46.66'/hr. Drilling with air. Spudded 2:30 PM 3-2-95. DC \$3733; CC \$10,183

3-4-95 TD 480' surface. WOC. Made 270' in 4-1/4 hours, 63.52'/hr. Air drilling. Survey 480' 1/2 deg. WOB all, RPM 65, PP 120#. Started equipment. Drilled. Rig repair - broke u-joint. TOH to run casing. Rigged up and ran 8-5/8" casing. Rigged up Western and cemented. WOC. Td surface hole at 3:00 PM 3-3-95. DC \$12,308; CC \$22,491

3-5-95 TD 785' sand and shale. Start equipment. Made 305' in 4 hours, 75'/hr. Air drilling. WOB 35,000#, RPM 65, PP 150#. WOC. TIH. Drilled out. Resumed drilling. TOH 137' and shut down equipment. DC \$4036; CC \$26,527

DETAILED CASING REPORT: Ran 11 joints 8-5/8" 24# J-55 (470.28') casing, set at 478'. Texas Pattern Notched guide shoe set at 478'. Insert float set at 432.72'. Cemented with 150 sacks "C" with 1/4#/sx celloseal + 2% CaCl2 (yield 1.33, weight 14.8). Tailed in with 100 sacks "C" with 2% CaCl2 (yield 1.33, weight 14.8). PD at 5:30 PM 3-3-95. Bumped plug to 800 psi, float held OK. Circulated 115 sacks to pit. WOC. Drilled out at 2:30 PM 3-4-95. WOC 20 hours. Cut off and weld on flow nipple. Reduced hole to 7-7/8" and resumed drilling.

3-6-95 TD 1550' sand and shale. Start equipment. Made 765' in 10-1/4 hours, 75.85'/hr. Air drilling. WOB 35,000#, RPM 65, PP 150#. Started equipment and TIH. Rig repair - work on pump. TOH 180' and shut down equipment. DC \$10,071; CC \$36,598

3-7-95 TD 2009'. Start equipment. Made 459' in 10-3/4 hours, 43'/hr. Drilling with air mist. WOB 35000#, RPM 65, PP 150#. Start equipment and TIH 180'. Drill. TOH and shut down equipment. DC \$5973; CC \$42571

3-8-95 TD 2210'. Start equipment. Made 201' in 5 hours, 40.20'/hr. Drilling with air mist. WOB 35000#, RPM 65, PP 150#. Started equipment and TIH 180'. Drilled. Circulated at 2180'. Tested from 2158-2180' - no fluid recovery. Drilled. Tested from 2180-2190' - no fluid recovery. Drilled. Tested from 2190-2200' - approx 1/2 bbl of formation water recovered, Cl 108,000. Drilled. Circulated. Shut down equipment and drain pumps. DC \$2812; CC \$45,383

3-9-95 TD 2230'. Rigging down rotary tools. WOB 35000#, RPM 65, PP 150#. Start equipment and TIH. Blow well down. Recovered 16.9 bbls formation water (149,000 ppm chloride). Drill. Circulate samples. Drill to TD. Reached TD at 9:15 AM. Circulate samples. Lay down drill collars and drill pipe. Nippled down rotating head. Ran 56 joints 5-1/2" casing. Cemented with Western. Rig released 5:30 PM 3-8-95. Move in service unit Monday. DC \$14,392; CC \$59,775

Detailed casing report: Ran 56 joints (2237.14') casing as follows: 53 joints 5-1/2" 15.5# J-55 (2115.60') and 3 joints 5-1/2" 17# J-55 (121.54'). Casing set at 2230'. Float shoe set 2230' and float collar set 2225.25'. Cemented with 350 sacks Class "C" with 1/2% CF-14A (yld 1.32, wt 14.8). PD 4:35 PM 3-8-95. Bumped plug to 1350 psi for 1 min. Circulated 34 sacks cement. Float and casing held. Rig released 5:30 PM 3-8-95.

3-10-95 Move in service unit Monday.

3-11-13-95 Moved in service unit. Prep to log, perf and acidize.

3-14-95 Cleaned location. Set anchors. Weld on bell nipple. Moved in and rigged up pulling unit. Rigged up Schlumberger. Logged CNL/GR from 2222-1100'. TOH with wireline. TIH with 4-3/4" bit, 5-1/2" scraper. Tagged PBTD at 2222'. TOH. TIH with 4" casing gun. Correlated on depth. Perf 2162-82' (2 JSPF) with 40 - .42" holes. TOH with wireline. TIH with 5-1/2" AD-a packer to 2200'. Spotted 2 bbls acid. Nippled down BOP. Set packer at 2105'. Break perfs at 2500 psi. Acidized with 5000 gals 20% NEFE acid with 60 balls. Avg 3 BPM @ 1800 psi. ISDP 1600#, 15 mins 1500#. Flowed well down. Swabbed and flowed 30 bbls. Tubing dry. In 3 hours runs recovered 1 bbl/hr with 1% oil cut. Shut well in. 112 bbls left to recover. DC \$13,680; CC \$13,680 On 3-14-95 Overnight SITP 150# (acid gas). First fluid level 1000' FS. Recovered 8 bbls 1% oil. Dry on 3rd run.

DRILLING REPORT

Page 2

Yates Petroleum - Quincy "AMQ" State #8 (Unit F) 12-8S-27E Chaves Co., NM

3-15-95 Perforated 2182-2214'. Prep to acidize with 10,000 gals gelled 20% HCL at 20 BPM.

3-16-95 Nippled down BOP. Nippled up frac valve. Acidized perfs 2162-2214' (via 5-1/2" casing) with 10,000 gals 20% NEFE gelled acid with ball sealers. Released well to production.

3-17-95 No report.

3-18-20-95 No report.

3-21-95 No report.

3-22-95 No report.

3-23-95 No report.

3-24-95 No report.

3-25-27-95 No report.

3-28-95 No report.

3-29-95 No report.

3-30-95 No report.

3-31-95 No report.

4-1-3-95 No report.

4-4-95 No report.

4-5-95 No report.

4-6-95 No report.

4-7-95 Pumping.

4-8-10-95 Pumping.

4-11-95 Pumping.

4-12-95 Pumping.

4-13-95 Pumping.

4-14-95 Pumping.

4-15-17-95 Pumping.

4-18-95 Pumping.

4-19-95 Pumping.

4-20-95 Pumping.

4-21-95 Pumping.

4-22-24-95 Pumping.

4-25-95 Moved in and rigged up pulling unit. Dig working pit. TOH with rods and pump. Nippled down wellhead and installed BOP. TOH with 2-7/8" tubing. Shut down. Prep to frac SAN Andres perfs. DC \$7535

4-26-95 Removed BOP and nipped up frac head. Frac'd San Andres perfs 2162-2214' with 80,000 gals 30# x-link gel and 150,000# 20/40 Brady sand. Avg 34 BPM @ 2067 psi. ISDP 1800 psi. Opened well for forced closure for 30 mins. 1194 psi in 30 mins. Total load to recover 1940 bbls. Shut well in overnight. Prep to clean sand out of casing and put well back on production. DC \$37,774

4-27-95 SICP 750 psi. Opened well on 1/4" choke. Well bled down to 0 psi in 3-1/2 hours. Removed frac head and installed BOP. TIH with 2-7/8" tubing. Reversed 45' of sand out of casing. TOH with 2-7/8" tubing. TIH with production string. Turned well over to production to run pump and rods. DC \$2335

4-28-95 Pumping.

4-29-5-1-95 Pumping.

5-2-95 Pumping.

5-3-95 Pumping.

5-4-95 Pumping.

5-5-95 Pumping.

5-6-8-95 Pumping.

5-9-95 Pumping.

5-10-95 Pumping.

5-11-95 Pumping.

5-12-95 Pumping.

5-13-15-95 Pumping.

5-16-95 Pumping.

5-17-18-95 Pumping.

5-19-95 Pumping.

5-20-22-95 Pumping.

5-23-95 Pumping.

5-24-95 Pumping.

5-25-95 Pumping.

5-26-95 TD 2230'; PBTD 2222'. On a 24 hour Official Potential test taken 5-2-95 well pumped 20 BOPD, 4 MCFGPD and 15 BWPD at a GOR of 200:1, Gravity 28.5 deg, through perforations 2162-2214' San Andres. WELL IS PRODUCING. FINAL REPORT

YATES PETROLEUM CORPORATION
CHRONOLOGICAL DRILLING REPORT
Quincy "AMQ" State #9
Unit 9
12-8S-27E
Chaves County, New Mexico

5-15-95 Location: 2310' FNL & 2310' FEL of Section 12-8S-27E, Chaves County, New Mexico. API No.: 30-005-63052. Elevation: 3938' GR. PTD: 2200' San Andres. Drilling Contractor: United Rig #4. Building location.

5-16-95 Building location.

5-17-95 Building location.

5-18-95 Waiting on rotary tools.

5-19-95 Waiting on rotary tools.

5-20-22-95 Waiting on rotary tools.

5-23-95 TD 5'. Prep to resume drilling. Spudded 14-3/4" hole at 12:00 PM 5-22-95. Set 5' of 13-3/8" conductor. Redi-mix in. Notified NMOCD in Artesia of spud.

5-24-95 TD 60' anhydrite. Repair rig. Made 60' in 1 hour, 60'/hr. WOB all, RPM 100. Rig up rig. Repair mist pump and rotary head. DC \$2490; CC \$8990

5-25-95 TD 460' anhydrite. WOC. Made 400' in 6-3/4 hours, 59'/hr. Survey 460' 1/2 deg. WOB 15K, RPM 100. Blow hole. Circulated. TOH. Rigged up and ran 8-5/8" casing. Rigged up BJ and cemented. DC \$15,280; CC \$24,270
DETAILED CASING REPORT: Ran 10 joints 8-5/8" 24# J-55 8RD R-3 (460.24') casing, set at 460'. Texas Pattern Notched guide shoe set at 460'. Insert float set at 416'. Cemented with 250 sacks Class "C" + 2% CaCl₂ (yield 1.32, weight 14.8). PD at 7:00 PM 5-24-95. Bumped plug to 700 psi, float did not hole. Circulated 75 sacks to pit. WOC.

5-26-95 TD 460' anhydrite. Rig repair. Made 0'. WOC. Cut off casing and nipples up BOP. TIH. Unloaded hole. Rig repair - rotary drive. Prep to drill out. DC \$1245; CC \$25,515

5-27-95 Drilling 685' anhydrite. Made 225' in 7-3/4 hours, 29'/hr. Drilling with air mist. WOB 10000#, RPM 65, PP 110#. Drilled out _____. WOC _____. Nipples up and tested to 1000 psi for 30 mins, OK. Reduced hole to 7-7/8". Resumed drilling with bit #2. DC \$3880; CC \$29,395

5-28-95 Drilling 1274' anhydrite and redbed. Made 589' in 10 hours, 58.9'/hr. Drilling with air mist. Survey 925' 1/2 deg. WOB 10000#, RPM 65, PP 110#. DC \$7939; CC \$37,334

5-29-95 Drilling 1766' anhydrite and dolomite. Made 492' in 10-3/4 hours, 46'/hr. Drilling with air mist. Survey 1410' 1/4 deg. WOB 10000#, RPM 65, PP 150#. Circulated - picked up 150'. Shut in overnight. DC \$6022; CC \$43,356

5-30-95 TD 2075' dolomite. Rig repair. Made 309' in 8 hours, 38'/hr. Drilling with air mist. Survey 1900' 1/2 deg. WOB 10000#, RPM 65, PP 150#. Repair clutch and booster clutch. DC \$4009; CC \$47,365

5-31-95 TD 2250'. Running casing. Made 175' in 4-1/2 hours, 34'/hr. Survey 2250' 1/2 deg. WOB 10000#, RPM 65, PP 150#. Reached TD 2250' at 12:15 PM 5-30-95. Circulated. Puddle test at 2250' - no oil, 5.3 bbls sulphury water. Laid down drill pipe and drill collars. Rig repair - torque converter. DC \$3035; CC \$50,400

6-1-95 TD 2250' anhydrite. Rigging down. DC \$23,503; CC \$73,903
DETAILED CASING REPORT: Ran 52 joints 5-1/2" 15.50# J-55 8rd (2252') casing, set at 2252'. Regular guide shoe set 2250'. Float collar set 2245'. Cemented with 350 sacks Class "C" + .5% CF-14 (yld 1.32, wt 14.8). PD 2:30 PM 5-31-95. Bumped plug to 1200 psi for 5 mins, float and casing held OK. Rig released 4:00 PM 5-31-95.

6-2-95 Moved in service unit to complete San Andres.

6-3-5-95 Cleaned location. Made cut off on 5-1/2" casing. Set and tested anchors. Moved in and rigged up pulling unit. Installed tubing head and BOP. Tested casing to 2400 psi. TIH with bit, scraper and 2-7/8" tubing. Tagged cement at 2198'. Could not rotate or wash down any further. Displaced casing with 2% KCl water. TOH with 2-7/8" tubing, scraper and bit. Rigged up wireline. TIH with logging tools. Pressured casing to 1000 psi and run CNL/CBL/CCL/GR logs from 2198' to surface. Rigged down wireline. Shut down. Prep to drill out cement to float collar at 2245' and re-log. DC \$6769

6-6-95 TIH with bit, drill collars and 2-7/8" tubing. Rigged up power swivel and drilled out 44' of cement from 2198' to 2242'. Circulated casing clean and TOH with 2-7/8" tubing, drill collars and bit. Rigged up wireline. TIH with logging tools. Correlated tools in to place and pressured casing to 1000 psi. Run CNL/CBL/CCL/GR log from 2242' to

DRILLING REPORT

Page 2

Yates Pet. - Quincy "AMQ" State #9 (Unit G) 12-8S-27E Chaves Co., NM

250'. TOH with logging tools and rigged down wireline. Faxed log to office to pick perfs. Shut down. Prep to perforate, acidize and frac. DC \$9120; CC \$15,889

6-7-95 Rigged up wireline. TIH with casing guns. Correlated guns into place and perforate San Andres (1 SPF) with 46 - .42" holes from 2184-2229'. TOH with casing guns and rigged down wireline. TIH with packer and 2-7/8" tubing. Set packer at 2139'. Acidized perfs 2184-2229' with 2500 gals 20% NEFE acid and 70 balls. Breakdown 3390 psi. Avg 5-1/2 BPM @ 2150 psi. ISDP 1750 psi. Bled well down and TOH with 2-7/8" tubing and packer. Removed BOP and nipped up frachead. Frac'd perfs 2184-2229' with 50,000 gals 30# x-link gel and 225,000# 20/40 Brady sand. Avg 55 BPM @ 2500 psi. ISDP 1870 psi. Forced close for 25 mins. Shut well in overnight. Prep to flow back, clean sand out of casing and hang well on pump. DC \$43,458; CC \$59,347

6-8-95 SICP 450 psi. Opened well on 1/4" choke. Well bled down to 0 psi in 3-1/2 hours. Removed frac head and installed BOP. TIH with 2-7/8" tubing. Reversed 40' of sand out of casing. TOH with 2-7/8" tubing. Ran 2-7/8" production string. Turned well over to production to run pump and drods and hang well on. Well will be pumping at 8:00 AM Thursday. DC \$2587; CC \$61,934

6-9-95 Pumping.

6-10-12-95 Pumping.

6-13-95 Pumping.

6-14-95 Pumping.

6-15-95 Pumping.

6-16-95 Pumping.

6-17-19-95 Pumping.

6-20-95 Pumping.

6-21-95 Pumping.

6-22-95 Pumping.

6-23-95 Pumping.

6-24-26-95 Pumping.

6-27-95 Pumping.

6-28-95 Pumping.

6-29-95 Pumping.

6-30-95 Pumping.

7-1-5-95 Pumping.

7-6-95 Pumping.

7-7-95 Shut in - will convert to WI.

7-8-10-95 Shut in - will convert to WI.

7-11-95 Shut in - will convert to WI.

7-12-95 Shut in - will convert to WI.

7-13-95 Shut in - will convert to WI.

7-14-95 Shut in - will convert to WI.

7-15-17-95 Shut in - will convert to WI.

7-18-95 Shut in - will convert to WI.

7-19-95 Shut in - will convert to WI.

7-20-95 Shut in - will convert to WI.

7-21-95 Shut in - will convert to WI.

7-22-24-95 Shut in - will convert to WI.

7-25-95 Shut in - will convert to WI.

7-26-95 Shut in - will convert to WI.

7-27-95 Shut in - will convert to WI.

7-28-95 Waiting on rotary tools.

7-29-31-95 Shut in - will convert to WI.

8-1-95 Shut in - will convert to WI. TEMPORARILY DROPPED FROM REPORT.

8-9-95 TD 2250'; PBT 2245'. This well completed as an injection well with injection into perforations 2184-2229' San Andres. Order No.: R-10349A. Well is not being injected into yet. FINAL REPORT

YATES PETROLEUM CORPORATION
CHRONOLOGICAL DRILLING REPORT
Quincy "AMQ" State #10
Unit K
12-8S-27E
Chaves County, New Mexico

4-3-95 Location: 2310' FSL & 1650' FWL of Section 12-8S-27E, Chaves County, New Mexico. API No.: 30-005-63053. Elevation: 3943'. PTD: 2200' San Andres. Drilling Contractor: United #4. Dirt Contractor: Shull Oilfield. Building location.

4-4-95 Building location. TEMPORARILY DROPPED UNTILL FURTHER NOTICE.

4-24-95 Moving in rotary tools.

4-25-95 TD 5'. Prep to resume drilling. Spudded 17-1/2" hole at 2:00 PM 4-24-95. Set 5' of 13-3/8" conductor. Notified NMOCD in Artesia of spud.

4-26-95 TD 465' redbed. WOC. Made 465' in 8-3/4 hours, 53.1'/hr. MW airmist. PP 190#. Started equipment. Resumed drilling at 7:15 AM 4-25-95. Drilled. Circulated. TOOH. Rigged up casers and ran 8-5/8" casing. Rigged up WCNA and cemented. DC \$15,071; CC \$21,571
DETAILED CASING REPORT: Ran and landed 10 joints 8-5/8" 24# 8R J 55 ST&C (465') casing, set at 459'. Texas Pattern Notched guide shoe set at 459'. INsert float set at 410.15'. Cemented with 150 sacks "C" with 1/4# celloseal + 2% CaCl2 (Yield 1.34, weight 14.8). Tailed in with 100 sacks "C" with 2% CaCl2 (Yield 1.34, weight 14.8). PD at 7:15 PM 4-25-95. Did not bump plug. Circulated 100 sacks to pit. WOC.

4-27-95 Drilling 1014' shale and anhydrite. Made 550' in 5-3/4 hours, 95.6'/hr. MW airmist. WOB 35K, RPM 70, PP 140#. Started equipment. Nippled up rot. head. Hooked up test tank. TIH. Drilled out at 1:00 PM 4-26-95. WOC 17 hours 45 mins. Reduced hole to 7-7/8" and resumed drilling. DMC \$600; CMC \$600; DC \$9134; CC \$30,705

4-28-95 Drilling 1866' dolomite and lime. Made 852' in 10-3/4 hours, 79.2'/hr. MW airmist. WOB 35#, RPM 70. Started equipment. TIH. Rig repair - u-joint on rotary table. Circulated and POOH with 1 stands. DMC \$600; CMC \$1200; DC \$10,647; CC \$41,352

4-29-95 TD 2225' dolomite and anhydrite. Puddle Testing. Made 359' in 6-3/4 hours, 53.2'/hr. Drilling with air mist. WOB 35000#, RPM 70. Puddle Test at 2167' - 1st gas show approx 2158-2160'. No recovery on test. Drilled to 2187'. Puddle Test at 2187' - recovered 3" (4.9 bbls) soapy fluid, 1/2" (.7 bbls) oily soap. Drilled to 2207'. Puddle Test 2187-2207' - recovered 4.9 bbls soapy fluid and .7 bbls oily soap. Drilled to 2225'. TD 7-7/8" hole at 6:15 PM 4-28-95. Circulated. TOH with 4 stands. Shut down overnight. DMC \$1400; CMC \$2600; DC \$7078; CC \$48,430

4-30-95 TD 2225'. Moving out rotary tools to Quincy #11. Unloaded hole to test tank (on 13 hr puddle test recovered 6-1/2 bbls oil and 11.7 bbls water to tank). Circulated hole. Laid down drill pipe and drill collars. Nippled down flowline and rotating head. Wait on casers. Ran 51 joints 5-1/2" 15.50# 8rd J-55 ST&C (2256.62') casing, set 2225'. Regular guide shoe set 2225'. Float collar set 2220.29'. Cemented with 25 sxs Gelled water, 300 sacks "C" with .5% CF-14A. PD 5:00 PM 4-29-95. Bumped plug to 1400 psi for 3 mins, float and casing held OK. Rig released 5:30 PM 4-29-95. CMC \$2600; DC \$22,439; CC \$70,869

5-1-95 Moving in service unit to complete San Andres.

5-2-95 Cleaned location. Set and test anchors. Made cut off on 5-1/2" casing. Moved in and rigged up pulling unit. Installed tubing head and BOP. Shut down. Prep to TIH with bit and scraper then run CNL/GR log. Plan to frac on Thursday. DC \$1883

5-3-95 TIH with bit, scraper and 2-7/8" tubing to 2212'. Displace hole with 2% KCL water. Test casing to 2000 psi. TOH with 2-7/8" tubing, scraper and bit. TIH with logging tools. Ran CNL/CCL/GR log from 2212' to 450'. TOH with logging tools. Fax log to office to select perfs. Shut down. Prep to perf and acidize. DC \$6281; CC \$28,312

5-4-95 Rigged up wireline. TIH with 4" casing guns. Perforated San Andres (2 SPF) with 88 - .42" holes as follows: 2148-51', 2161-2200'. TOH with casing guns. Rig down wireline. TIH with packer and 2-7/8" tubing. Set packer at 2093'. Acidized perfs 2148-2200' with 2500 gals 20% NEFE acid + 140 ball sealers. Break down 3800 psi. Avg 5.7 BPM at 2300#. Good ball action. ISDP 1200#, 15 mins 1000#. Total load to recover 73 bbls. Bled well down and unset packer. TOH with 2-7/8" tubing and packer. Shut down. Prep to frac. DC \$7388; CC \$35,700

5-5-95 Removed BOP and nipped up frac head. Frac'd San Andres perfs 2148-2200' with 100,000 gals 30# x-link gel and 200,000# 20/40 Brady sand. Avg 38 BPM @ 2200 psi. ISDP 1640 psi. Force closed well for 30 mins.

DRILLING REPORT

Page 2

Yates Pet. - Quincy "AMQ" State #10 (Unit K) 12-8S-27E Chaves County, NM

5-6-95 Total load to recover 2375 bbls. Shut well in overnight. Prep to flow well down. Clean sand out of casing and hang well on pump. DC \$35,855 SICP 800 psi. Opened well to pit on 1/4" choke. Well bled down to 0 psi in 4 hours. Removed frac head and installed BOP. TIH with 2-7/8" tubing. Reverse 63' of sand out of casing. TOH with 2-7/8" tubing. Turn well over to production to hang well on pump. Well hung on pump Friday after 2:00 PM. DC \$2707

5-7-8-95 Pumping.

5-9-95 Pumping.

5-10-95 Pumping.

5-11-95 Pumping.

5-12-95 Pumping.

5-13-15-95 Pumping.

5-16-95 Pumping.

5-17-18-95 Pumping.

5-19-95 Pumping.

5-20-22-95 Pumping.

5-23-95 Pumping.

5-24-95 Pumping.

5-25-95 Pumping.

5-26-95 TD 2225'; PBTD 2212'. On a 24 hour Official Potential test taken 5-10-95 well pumped 37 BOPD, 4 MCFGPD and 42 BWPD at a GOR fo 108:1, gravity 28.5 deg, through perforations 2148-2200' San Andres. WELL IS PRODUCING. FINAL REPORT

YATES PETROLEUM CORPORATION
CHRONOLOGICAL DRILLING REPORT
Quincy "AMQ" State #11
Unit K
12-8S-27E
Chaves County, New Mexico

4-25-95 Location: 1650' FSL & 1650' FWL of Section 12-8S-27E, Chaves County, New Mexico. API No.: 30-005-63061. Elevation: 3934'. PTD: 2200' San Andres. Drilling Contractor: United #4. Building location.

4-26-95 Building location.

4-27-95 Building location.

4-28-95 Building location.

4-30-95 Moving in and rigging up rotary tools.

5-1-95 TD 5'. Prep to resume drilling. Spudded 17-1/2" hole at 11:00 AM 4-30-95. Set 5' of 13-3/8" conductor. Cemented to surface. Notified NMOCD in Artesia of spud.

5-2-95 TD 464' redbed. WOC. Made 459' in 8-1/4 hours, 55.6'/hr. Drilling with air mist. WOB 30000#, RPM 70, PP 120#. TD 12-1/4" hole at 3:00 PM 5-1-95. Ran and landed 10 joints 8-5/8" 24# 8R J-55 ST&C (452.24') casing, set at 460'. Texas Pattern Notched guide shoe set 460'. Insert float set at 413.17'. Cemented with 25 sxs gelled H2O + 150 sxs "C", 1/4#/sx Celloseal and 2% CaCl (yld 1.34, wt 14.8). Tailed in with 100 sxs "C" with 2% CaCl (yld 1.34, wt 14.8). PD 6:00 PM 5-1-95. Did not bump plug. Circ 100 sacks. WOC. DC \$15,531; CC \$22,031

5-3-95 Drilling 887' anhydrite and redbed. Made 423' in 5-1/2 hours, 76.9'/hr. Drilling with air mist. WOB 35000#, RPM 70, PP 140#. Drilled out 1:30 PM 5-2-95. WOC 19 hours 30 mins. Back out landing joint. Nippled up rotating head. Reduced hole to 7-7/8". Resumed drilling with bit #2. DC \$7028; CC \$29,059

5-4-95 Drilling 1839' anhydrite and lime. Made 952' in 11-1/2 hours, 82.8'/hr. Drilling with air mist. WOB 35000#, RPM 70, PP 140#. TIH. Drilled. Circulated. TOH with 1 stand. Top of San Andres 1550'. DMC \$600; CMC \$600; DC \$12,047; CC \$41,106

5-5-95 TD 2161' dolomite. Trip for bit. Made 322' in 6-3/4 hours, 47.7'/hr. MW airmist. WOB 35K, RPM 70. Started equipment. TIH with 1 stand. TIH with bit #4 at 1921'. Installed valve in flowline. Puddle tested well 2138-2158'. Attempted to unload well. Couldn't unload. Rigged up Booster Pump. Will try to unload this AM with Booster Pump. DMC \$2400; CMC \$3000; DC \$8108; CC \$49,214

5-6-95 TD 2221' dolomite and anhydrite. Rig down and move out rotary tools. Made 60' in 1-1/4 hours, 48'/hr. Reached TD 12:45 PM 5-5-95. Ran 51 joints 5-1/2" 15.5#, 8r, J-55, ST&C (2223.10') casing, set 2221'. Regular guide shoe set 2221', float collar set 2216.30'. Cemented with 25 sacks Gelled H2O and 350 sacks Class "C" with .5% CF-14A (yield 1.34, weight 14.8). PD 9:15 PM 5-5-95. Bumped plug to 700 psi for 3 mins, float and casing held. Cement did not circulate. Set slips and cut off 5-1/2" casing. Marker joint 2104-2124', sand blasted casing 1516-2216'. NOTE: Had returns while mixing cement. Lost returns when shut down to drop plug. Regained returns with 32 bbls pumped. Had returns for 14 bbls. Lost returns with 47 bbls pumped. Total displaced 52 bbls. Rig released 10:00 PM 5-5-95. DC \$23,003; CC \$72,217

5-7-8-95 Waiting on completion unit.

5-9-95 Rig up to run bit and scraper.

5-10-95 Cleaned location. Set and test anchors. Made cut off on 5-1/2 casing. Moved in and rigged up pulling unit. Installed BOP and test casing to 2000 psi. TIH with bit, scraper and 2-7/8 tubing to 2211. Displace casing with 2% water. TOH with 2-7/8 tubing, scraper and bit. Prep to perf and acidize with 3000 gals acid and swab test. DC \$7249

5-11-95 TIH with 4" casing gun. Perforated San Andres 1 SPF with 55 - .42" holes from 2144-2198'. TIH with packer and 2-7/8" tubing. Removed BOP and nipped up wellhead. Set packer at 2097' and tested annulus to 500 psi. Swabbed tubing dry. Acidized perfs 2144-98' with 3000 gals 20% NEFE acid + 60 balls. Breakdown 1000 psi. Avg 5 BPM at 2200#. Good ball action. ISDP 2000#, 15 mins 1000 psi. Opened well on 1/2" choke and bled well down. Rigged up swab and swabbed as follows:

TIME	FL	# SR	OIL	WATER	MCF
2 PM	200'			12	
3 PM	1500'	2	10%	6	
4 PM	1500'	2	20%	3	Good, good blow of gas
5 PM	1500'	2	20%	2.5	Good
6 PM	1500'	2	20%	3	Good
7 PM	1500'	2	20%	2	Good
8 PM	1500'	2	20%	3	Good

- Drilling Report

Page 2

Yates Pet. - Quincy "AMQ" State #11 (Unit K) 12-8S-27E Chaves County, NM

9 PM	1500'	2	20%	2.5	Good
10 PM	1500'	2	20%	2	Good
11 PM	1500'	2	20%	2	Good
12 AM	1500'	2	20%	2	Good
1 AM	1500'	2	20%	2	Good
2 AM	1500'	2	20%	2	Good
3 AM	1500'	2	20%	2	Good
4 AM	1500'	2	20%	2	Good
5 AM	1500'	2	20%	2	Good
6 AM	1500'	2	20%	2	Good

Total recovered 43 bbls water and 9 bbls oil. Load left 42 bbls.

Continued swabbing. DC \$7857; CC \$15,106

5-12-95 Unset packer. TOH with 2-7/8" tubing and packer. Spot frac tanks. Shut down. Prep to frac with 80,000 gals & 200,000# sand. DC \$3549; CC \$18,655

5-13-95 Removed BOP and installed frac head. Frac'd San Andres 2144-98' with 85,000 gals 30# crosslink gel and 200,000# 20/40 Brady sand. Avg 44 BPM at 2977#. ISDP 1600#. Force close well for 30 mins. TLTR 1976 bbls. Shut in overnight. Prep to bleed well down, clean sand out of casing and hang well on pump. DC \$38,399; \$57,054

5-14-15-95 SICP 1000#. Opened well on 1/4" choke and bled down to pit. Well bled down to 0 psi in 5 hours. Removed frac head and installed BOP. TIH with 2-7/8" tubing and reverse 30' of sand out of casing to 2211'. TOH with 2-7/8" tubing. Turned well over to production to hang well on pump. DC \$2314; CC \$59,368

5-16-95 Pumping.

5-17-18-95 Pumping.

5-19-95 Pumping.

5-20-22-95 Pumping.

5-23-95 Pumping.

5-24-95 Pumping.

5-25-95 Pumping.

5-26-95 TD 2221'; PBTD 2211'. On a 24 hour Official Potential test taken 5-20-95 well pumped 41 BOPD, 10 MCFGPD and 57 BWPD at a GOR of 244:1, gravity 28.5 deg, through perforations 2144-2198' San Andres. WELL IS PRODUCING. FINAL REPORT

YATES PETROLEUM CORPORATION
CHRONOLOGICAL DRILLING REPORT
Quincy "AMQ" State #12
Unit E
12-8S-27E
Chaves County, New Mexico

4-15-17-95 Location: 1650' FNL & 330' FWL of Section 12-8S-27E, Chaves County, New Mexico. API No.: 30-005-63062. Elevation: 3793' GL. PTD: 2200' San Andres. Drilling Contractor: United #4. Dirt Contractor: Shull Construction. Building location.

4-18-95 Building location. Prep to move in and rig up.

4-19-95 TD 5'. Prep to resume drilling. Spudded 17-1/2" hole at 3:00 PM 4-18-95. Set 5' of 13-3/8" conductor. Notified NMOCD of spud.

4-20-95 TD 465' redbed. WOC. Made 465' in 9-1/2 hours, 48.9'/hr. MW airmist. WOB all, RPM 70, PP 190#. Started equipment. Circulated. TOOH. Rigged up casers and ran 8-5/8" casing. Rigged up WCNA and cement. DC \$17,063; CC \$23,363
DETAILED CASING REPORT: Ran and landed 10 joints 8-5/8" 24# 8R J-55 ST&C (454.27') casing, landed at 462'. Texas Pattern Notched guide shoe set at 462'. Insert float set at 415.90'. Cemented with 125 sacks Pacesetter Lite "C" + 1/2# celloseal + 3% CaCl₂ and pumped 50 bbls mud flush ahead of cement (yield 2.01, weight 12.4). Tailed in with 100 sacks "C" + 2% CaCl₂ (yield 1.34, weight 14.8). PD at 6:45 PM 4-19-95. Bumped plug to 250 psi. Circulated 100 sacks to pit. WOC.

4-21-95 Drilling 1063' anhydrite. Made 598' in 6 hours, 99.6'/hr. MW airmist. WOB 30K, RPM 70, PP 150#. Started equipment. Nipped up BOP. TIH. Drilled out at 12:45 PM 4-20-95. WOC 18 hours. Reduced hole to 7-7/8" and resumed drilling. DMC \$600; CMC \$600; DC \$8407; CC \$31,770

4-22-95 Drilling 1940' lime and dolomite. Made 877' in 11-1/4 hours, 77.9'/hr. MW airmist. WOB 35K, RPM 70, PP 190#. Start equipment and TIH. Drilled. Circulated. POOH with 1 stand drill pipe. DMC \$1140; CMC \$1740; DC \$12,201; CC \$43,971

4-23-95 TD 2215' anhydrite and dolomite. Puddle testing. Made 275' in 5-3/4 hours, 47.8'/hr. MW airmist. WOB 35K, RPM 70, PP 190#. Started equipment. Drilled to 2162'. Puddle tested at 2162'. Drilled to 2182'. Puddle tested at 2182'. Drilled to 2202'. Puddle tested at 2202'. Circulated. TOH with 3 stands. Puddle test overnight. Top of Pl approx 2140'. On puddle tests, had strong gas show with slight oil show. Anhydrite approx 2205'. DMC \$650; CMC \$2390; DC \$6043; CC \$50,014

4-24-95 TD 2215' anhydrite. Moving rotary tools to Quincy AMQ #10. Made 0'. Started equipment and service rig. TIH with drill pipe. Unloaded hole to tank. Waited on orders. Laid down drill pipe and drill collars. Nipped down rotary head. Rigged up casing crew. Ran 54 joints 5-1/2" casing. Cemented with WEstern. Rig released. On overnight puddle test (15 hours) recovered 1/4 bbl oil and 5-1/2 bbls mist water with strong gas show. DMC \$300; CMC \$2690; DC \$21,500; CC \$71,514
DETAILED CASING REPORT: Ran 54 joints 5-1/2" 15.50# 8R J-55 ST&C (2217.07') casing, set at 2215'. Regular guide shoe set at 2215'. Float collar set at 2210.29'. Ceemnted with 25 sacks gelled H₂O + 300 sacks "C" + 5/10% CF-14A (yield 1.34, weight 14.8). PD at 4:15 PM 4-23-95. Bumped plug to 1250 psi for 3 mins. Rig released at 5:00 PM 4-23-95. NOTE: Sandblasted casing from 1585' to TD.

4-25-95 Waiting on completion unit.

4-26-95 Waiting on completion unit.

4-27-95 Cleaned location. Set and tested anchors. Made cut off on 5-1/2" casing. Moved in and rigged up pulling unit. Prep to TIH wth bit and scraper and log. DC \$2403

4-28-95 Nipped up tubing head and BOP. Tested casing to 2000 psi for 6 mins. TIH with bit, scraper and 2-7/8" tubing to 2208'. Displaced casing with 2% KCl water. TOH with 2-7/8" tubing, scraper and bit. Rigged up wireline. TIH with logging tools. Run CNL/GR log from 2208' to 100'. TOH with logging tools. Faxed log to office for perfs to be picked. Prep to perforate and acidize San Andres with 10,000 gals. DC \$4879

4-29/5-1-95 TIH with 4" casing guns. Perforated San Andres 2 SPF with 74 - .42" holes as follows: 2152-56' and 2164-96'. TIH with packer and 2-7/8" tubing. Set packer at 2072'. Acidized perfs 2152-96' with 10000 gals 20% NEFE acid and 120 balls. Breakdown 3920#. Avg 5 BPM at 1940#. First set balls 50 psi increase; 2nd set of balls, balled out to 3800 psi. ISDP 1670#, 15 mins 1390#. TLTR 262 bbls. Bled well down to 0 psi. Unset packer. TOH with 2-7/8" tubing and packer. Turned well over to production to hang well on pump. DC \$12,441

5-2-95 Plan to frac Thursday.

• DRILLING REPORT

Page 2

Yates Petroleum - Quincy "AMQ" State #12 (Unit E) 12-8S-27E

*****Chaves Co., NM*****

5-3-95 Moving in service unit. Prep to frac Thursday.
5-4-95 Moved in and rigged up pulling unit. TOH with rods and pump. Nippled down wellhead and installed BOP. TOH with 2-7/8" tubing. Shut down. Prep to frac. DC \$3939
5-5-95 Removed BOP and nipped up frac head. Frac'd San Andres perms 2152-96' with 100,000 gals 30# x-link gel and 200,000# 20/40 Brady sand. Avg 38 BPM @ 2300 psi. ISDP 1940 psi. Force closed well for 30 mins. total laod to recover 2340 bbls. Shut well in overnight. Prep to flow well down. Clean sand out of casing and hang well on pump. DC \$37,572
5-6-8-95 SICP 1000#. Opened well to pit on 1/4" choke. Well bled down to 0 psi in 3-1/2 hours. Removed frac head and installed BOP. TIH with 2-7/8" tubing. Reverse 14' of sand out of casing. TOH with 2-7/8" tubing. Turned well over to production to hang well on pump. Will hang well on pump Friday at 4:30 PM. DC \$2785
5-9-95 Pumping.
5-10-95 Pumping.
5-11-95 Pumping.
5-12-95 Pumping.
5-13-15-95 Pumping.
5-16-95 Pumping.
5-17-18-95 Pumping.
5-19-95 Pumping.
5-20-22-95 Pumping.
5-23-95 Pumping.
5-24-95 Pumping.
5-25-95 Pumping.
5-26-95 TD 2215'; PBTD 2208'. On a 24 hour Official Potential test taken 5-10-95 well pumped 24 BOPD, 5 MCFGPD and 37 BWPD at a GOR of 208:1, gravity 28.5 deg, through perforations 2152-2196' San Andres. WELL IS PRODUCING. FINAL REPORT

YATES PETROLEUM CORPORATION
CHRONOLOGICAL DRILLING REPORT
Quincy "AMQ" State #13
Unit N
12-8S-27E
Chaves County, New Mexico

5-26-95 Location: 990' FSL & 1550' FWL of Section 12-8S-27E, Chaves County, New Mexico. API No.: 30-005-63070. Elevation: 3938'. PTD: 2200' San Andres. Drilling Contractor: United #6. Dirt Contractor: Shull Oilfield Construction. Building location.

5-27-30-95 Building location.

5-31-95 Waiting on rotary tools.

6-1-95 Waiting on rotary tools.

6-2-95 Waiting on rotary tools.

6-3-4-95 Waiting on rotary tools.

6-5-95 Moving in rotary tools.

6-3-4-95 Waiting on rotary tools.

6-5-95 Moving in rotary tools.

6-6-95 Drilling 430' redbed. Made 430' in 8-1/2 hours, 50.5'/hr. WOB all, RPM 70, PP 120#. Moved in and rigged up rotary tools. Spudded 14-3/4" hole at 10:00 AM 6-5-95. Set 5' of conductor pipe. WOC. Resumed drilling at 9:30 PM 6-5-95. Notified NMOC in Artesia of spud. Show of water at 396'. DC \$5850; CC \$14,350

6-7-95 Drilling 866' shale. Made 436' in 5-1/4 hours, 79.3'/hr. WOB 35K, RPM 70, PP 190#. TD 12-1/4" hole at 6:15 AM 6-6-95. Circulated. TOH. Rigged up casing and ran 8-5/8" casing. Rigged up WCNA and cemented. WOC. Drilled out. DMC \$500; CMC \$500; DC \$18,797; CC \$33,147
DETAILED CASING REPORT: Ran 10 joints (441.89') 8-5/8" 24# 8R J-55 ST&C casing, landed at 447'. Texas Pattern Notched guide shoe set at 447'. Insert float set at 400.30'. Cemented with 25 sacks gelled H2O + 150 sacks Class "C" with 1/4# celloseal + 2% CaCl2 (Yield 1.32, weight 14.8). Tailed in with 100 sacks "C" with 2% CaCl2 (Yield 1.32, weight 14.8). PD at 9:30 AM 6-6-95. Bumped plug to 500 psi, float held OK. Circulated 100 sacks. Drilled out at 12:45 AM 6-7-95. WOC 15 hours 15 mins. Nippled up rotating head. Reduced hole to 7-7/8" and resumed drilling.

6-8-95 TD 2100' dolomite. Shut down overnight. Prep to resume drilling. Made 1240' in 16-1/2 hours, 75.1'/hr. WOB 35000#, RPM 70, PP 190#. Started making water at 978'. Cl 140,000. DMC \$0; CMC \$500; DC \$16,010; CC \$49,157

6-9-95 TD 2205' dolomite and anhydrite. Rigged down and moved off rotary tools. Made 105' in 3 hours, 35'/hr. WOB 35K, RPM 70. Shut down overnight. Drilled to 2158'. Top P1 at 2138'. Tested 2138-2158'. Recovered 6 bbls water. Drilled to 2178'. TESted from 2158-2178'. Good oil show to pit. Drilled to 2200'. Tested 2178-2200'. Good oil show to pit. Drilled to 2205'. Circulated. TOOH and laid down drill pipe. Nippled down rotary head. Ran 10 joints casing. Waited on Western. Ran casing. Rigged up WCNA and cemented. Rig released at 10:30 PM 6-8-95. DMC \$1000; CMC \$1500; DC \$21,041; CC \$70,198
DETAILED CASING REPORT: Ran 55 joints (2211.84') casing, set at 2205' as follows:
15 jts 5-1/2" 17# 8R J-55 LT&C used casing (570.54')
28 jts 5-1/2" 15.50# 8R J-55 LT&C used csg (1104.67')
12 jts 5-1/2" 15.50# 8R J-55 LT&C new csg (536.63')
Regular guide shoe set at 2205'. Float collar set at 2200.27'. Cemented with 25 sacks gelled water. Tailed in with 300 sacks "C" with 5/10% CF-14 (yield 1.32, weight 14.8). PD at 9:30 PM 6-8-95. Bumped plug to 1400 psi for 3 mins. Good returns throughout job. Rig released at 10:30 PM 6-8-95.

6-10-12-95 Moved in service unit to complete in San Andres.

6-13-95 Cleaned location. Set and tested anchors. Made cut off on 5-1/2" casing. Moved in and rigged up pulling unit. Installed tubinghead and BOP. Tested casing to 2000 psi. TIH with bit, scraper and 2-7/8" tubing to 2201'. Displaced casing with 2% KCL water. TOH with 2-7/8" tubing, scraper and bit. Rigged up wireline. TIH with logging tools. Ran CNL/GR, CBL/CCL/GR logs from 2201-280'. Logged CBL with 1000 psi on casing. TOH with logging tools and rigged down wireline. Faxed logs to office to pick perms. Prep to perforate and acidize and frac Wednesday. DC \$9453

6-14-95 Rigged up wireline. TIH with 4" casing guns. Correlated guns into place and perforated San Andres (1 SPF - 90 deg phasing) with 51 - .42" holes from 2142-92'. TOH with casing gun and rigged down wireline. TIH with packer and 2-7/8" tubing. Set packer at 2072' and acidized perms 2142-92' with 2500 gals 20% NEFE acid and 75 balls. Breakdown 2800 psi. Avg

DRILLING REPORT

Page 2

Yates Pet. - Quincy "AMQ" State #13 (Unit N) 12-8S-27E Chaves Co., NM

5.3 BPM @ 2500 psi. Ball sealers: 1st set 300 psi increase, 2nd set 400 psi increase, 3rd set 600 psi increase. ISDP 1600 psi, 15 mins 800 psi. Bled well down. Total load to recover 104 bbls. Unset packer. TOH with 2-7/8" tubing and packer. Shut down. Prep to frac today. DC \$7022; CC \$16,475

6-14-95 Rigged up wireline. TIH with 4" casing guns. Correlated guns into place and perforated San Andres (1 SPF - 90 deg phasing) with 51 - .42" holes from 2142-92'. TOH with casing gun and rigged down wireline. TIH with packer and 2-7/8" tubing. Set packer at 2072' and acidized perfs 2142-92' with 2500 gals 20% NEFE acid and 75 balls. Breakdown 2800 psi. Avg 5.3 BPM @ 2500 psi. Ball sealers: 1st set 300 psi increase, 2nd set 400 psi increase, 3rd set 600 psi increase. ISDP 1600 psi, 15 mins 800 psi. Bled well down. Total load to recover 104 bbls. Unset packer. TOH with 2-7/8" tubing and packer. Shut down. Prep to frac today. DC \$7022; CC \$16,475

6-15-95 Removed BOP and nipped up frac head. Frac'd San Andres perfs 2142-2192' with 80,000 gals Spectrafrac (30# x-link) and 225,000# 20/40 Brady Sand. Avg 55 BPM @ 3089 psi. ISDP 1630 psi, 15 mins 1494 psi. Total load to recover 2000 bbls. Shut well in. Prep to clean sand out of casing and hang well on pump. DC \$38,562

6-16-95 SICP 0 psi. Removed frac head and installed BOP. TIH with 2-7/8" tubing. Reversed 94' of sand out of casing to 2201'. TOH with 2-7/8" tubing. Turned well to production to run production string and hang on pump. Pumping at 4:30 PM. Made 150 bbls water as of 6:00 Am Friday. DC \$2433

6-17-19-95 Pumping.

6-20-95 Pumping.

6-21-95 Pumping.

6-22-95 Pumping.

6-23-95 Pumping.

6-24-26-95 Pumping.

6-27-95 Pumping.

6-28-95 Pumping.

6-29-95 Pumping.

6-30-95 TD 2205'; PBTD 2201'. On a 24 hour Official Potential test taken 6-29-95, well pumped 55 BOPD, 10 MCFGPD and 32 BWPD at a GOR of 182:1 and Gravity 28.5 deg, thru perfs 2142-2192'. WELL IS PRODUCING. FINAL REPORT.

YATES PETROLEUM CORPORATION
CHRONOLOGICAL DRILLING REPORT
Quincy "AMQ" State #14
Unit N
12-8S-27E
Chaves County, New Mexico

7-26-95 Location: 990' FSL & 2310' FWL of Section 12-8S-27E, Chaves County, New Mexico. API No.: 30-005-63059. Elevation: 3939'. PTD: 2200' San Andres. Drilling Contractor: _____. Building location.

7-27-95 Building location.

7-28-95 Waiting on rotary tools.

7-29-30-95 Waiting on rotary tools.

7-31-95 Moving in and rigging up rotary tools.

8-1-95 TD 470' redbed and anhydrite. WOC. Made 470' in 11-1/4 hours, 41.7'/hr. Survey 470' 1/2 deg. WOB 25K, RPM 80, PP 150#. Spudded at 7:30 AM 7-31-95. Circulated. TOH. Rigged up casing crew and ran 8-5/8" casing. Waited on BJ. Cemented 8-5/8" casing. WOC. DC \$24,793; CC \$24,793
DETAILED CASING REPORT: Ran 10 joints 8-5/8" 24# J-55 8rd (458') casing, landed at 470'. Texas Pattern Notched guide shoe set at 470'. Insert float set at 470'. Cemented with 150 sacks "C" + 1/4#/sx celloseal + 2% CaCl2 (yield 1.32, weight 14.8). Tailed in with 100 sacks "C" + 2% CaCl2 (yield 1.32, weight 14.8). PD at 11:15 PM 7-31-95. Bumped plug to 600 psi, float did not hold. WOC.

8-2-95 TD 892' anhydrite. Rig service. Made 422' in 6 hours, 70'/hr. WOB 25K, RPM 60, PP 140#. WOC. Drilled out at 1:00 PM 8-1-95. WOC 13 hours 45 mins.. Resumed drilling. DC \$5935; CC \$30,728

8-3-95 TD 7194' anhydrite. Service rig. Made 902' in 10-3/4 hours, 84'/hr.. Survey 1794' 3/4 deg. WOB 25K, RPM 60, PP 140#. Circulated and pulled 10 stands. DC \$12,285; CC \$43,013

8-4-95 TD 2219' anhydrite. Rig service. Made 425' in 5-3/4 hours, 74'/hr. BGG 60, Max 330. Survey 1994' 1 deg. WOB 25K, RPM 60, PP 140#. Circulated. Top of P1 at 2155'. PUddle test #1 at 2175' - 1/2 bbl oil and 1/2 bbl drilling fluid. Circulate and puddle test #2 at 2195' - 2-1/2 bbl oil and 2 bbls drilling fluid. Unloaded hole. Circulated. Shut in overnight. DC \$6373; CC \$49,336

8-5-95 TD 2219' anhydrite. Rigged down. Made 0'. Blow hole. Overnight recovery - 10 bbls oil, 7 bbls water and 15 bbls emulsion. Laid down drill pipe and drill collars. Rigged up and ran 5-1/2" casing. Rigged up BJ and cemented. Set slips and cut off casing. Rigged down. DC \$24,307; CC \$73,643
DETAILED CASING REPORT: Reached TD at 5:00 PM 8-3-95. Ran 53 joints (2222') 5-1/2" 15.50# J-55 8rd casing, set at 2219'. Regular guide shoe set at 2219'. Float collar set at 2214'. Cemented with 300 sacks "C" + 5% CF-14A (yield 1.32, weight 14.8). PD at 12:45 PM 8-4-95. Bumped plug to 1300 psi for 5 mins. Float and casing held OK. Rig released at 3:00 PM MDT 8-4-95. NOTE: Cent. and sandblasted pipe 2219-1700'. Pumped 60 bbls gelled water ahead of cement. Had good returns. Circulated out 4 bbls oil ahead of gelled water.

8-8-95 Moved in service unit to complete in San Andres. Will frac on Tuesday. Cleaned location. Set and tested anchors. Made cut off on 5-1/2" casing. Moved in and rigged up pulling unit. Installed tubing head and BOP. Tested casing to 2200 psi. TIH with bit, scraper and 2-7/8" tubing to 2209'. Reversed casing clean with 2% KCL water. TOH with 2-7/8" tubing, scraper and bit. Rigged up wireline. TIH with logging tools. Pressured casing to 1000 psi and run CNL/CBL/CCL/GR logs from 2209-450'. TOH with logging tools and rigged down wireline. Faxed logs to office for perf selection. Prep to perforate, acidize and frac. DC \$8923

8-9-95 Rigged up wireline. TIH with casing guns. Correlated guns into place and perforated San Andres (1 SPF) with 54 - .42" holes from 2153-2206'. TOH with casing guns and rigged down wireline. TIH with packer and 2-7/8" tubing. Acidized perfs 2153-2206' with 3000 gals 20% NEFE acid and 75 balls. Breakdown 890 psi. Avg 4 BPM @ 1350 psi. Good ball action. ISDP 1421 psi, 5 mins 760 psi. Unset packer. Dropped down thru perfs to knock off balls. TOH with 2-7/8" tubing and packer. Removed BOP and nipped up frac head. Frac'd San Andres perfs 2153-2206' with 80,000 gals 35# x-link gel and 400,000# 20/40 Brady sand. AVg 57 BPM @ 2640 psi. ISDP 1783 psi. Opened well fr 30 mins for forced closure. Shut well in overnight. Prep to clean sand out of casing and hang well on pump. Total load to recover 2300 bbls water. DC \$48,873; CC \$57,796

DRILLING REPORT

Page 2

Yates Petroleum - Quincy "AMQ" State #14 (Unit N) 12-8S-27E Chaves Co.,
*****New Mexico*****

8-10-95 SITP 150 psi. Opened well and bleed down to pit. Removed frac head and installed BOP. TIH with 2-7/8" tubing. Tagged sand at 2122'. Reversed casing clean to 2209' (87' of sand). TOH with 2-7/8" tubing. Turned well over to production to hang well on pump. Should be pumping at 10:00 AM Thursday. DC \$2581; CC \$60,377

8-11-95 Pumping.

8-12-14-95 Pumping.

8-15-95 Pumping.

8-16-95 Pumping.

8-17-95 Pumping.

8-18-95 Pumping.

8-19-21-95 Pumping.

8-22-95 Pumping.

8-23-95 Pumping.

8-24-95 Pumping.

8-25-95 TD 2219'; PBTD 2209'. On a 24 hour Official Potential test taken 8-24-95 well pumped 75 BOPD, MCFGPD TSTM and 120 BWPD through perforations 2153-2206'. WELL IS PRODUCING. FINAL REPORT

YATES PETROLEUM CORPORATION
CHRONOLOGICAL DRILLING REPORT
Quincy "AMQ" State #15
(Unit K)
12-8S-27E
Chaves County, New Mexico

8-2-95 Location: 1650' FSL & 2310' FWL of Section 12-8S-27E, Chaves County, New Mexico. API No.: 30-005-63075. Elevation: 3936'. PTD: 2200' San Andres. Drilling Contractor: United #4. Dirt Contractor: Shull. Building location.

8-8-95 Moving in rotary tools.

8-9-95 Moving in rotary tools.

8-10-95 Rigging up rotary tools.

8-11-95 Rigging up rotary tools.

8-12-95 Moving in rotary tools.

8-13-95 Drilling 340' redbed. Made 340' in 6-1/2 hours, 52.3'/hr. Finished rigging up. Set 5' of 13-3/8" conductor. Drained equipment and TOH. Resumed drilling at 11:30 AM 8-12-95. DMC \$500; CMC \$500; DC \$5198; CC \$14,198

8-14-95 TD 467' Redbed. WOC. Made 127' in 2-1/4 hours, 56.4'/hr. WOB 15K, RPM 70, PP 140#. TIH and unloaded hole. Tripped for plugged bit. Circulated. TOOH. Ran 10 joints 8-5/8" casing. Cemented casing. WOC. DMC \$0; CMC \$500; DC \$12,512; CC \$26,710
DETAILED CASING REPORT: Ran and landed 10 joints 8-5/8" 24# 8R J-55 ST&C (454.90') casing, set at 461'. Texas Pattern Notched guide shoe set at 461'. Insert float set at 417.33'. Cemented with 25 sacks FW gel + 150 sacks and 1/4# celloceal + 2% CaCl2 (yeild 1.32, weight 14.8). Tailed in with 100 sacks "C" with 2% CaCl2 (yield 1.32, weight 14.8). PD at 2:15 PM 8-13-95. Bumped plug to 1500 psi. Float held OK. Circulated 110 sacks to pit. WOC.

8-15-95 TD 1114' anhydrite. TIH. Made 647' in 6-3/4 hours, 95.4'/hr. MW airmist. WOB 35K, RPM 70, PP 180#. Nippled up rotating head. TIH. Drilled out at 11:00 AM 8-14-95. WOC 19 hours 45 mins. Reduced hole and resumed drilling. Circulated - pulled 3 stands drill pipe. DMC \$0; CMC \$500; DC \$7070; CC \$33,780

8-16-95 TD 1991' anhydrite and lime. TIH. Made 877' in 10-3/4 hours, 81.5'/hr. Survey 1560' 1 deg. WOB 35K, RPM 70, PP 190#. Started equipment. Service rig. Circulated and pulled 3 stands. Top of San Andres approx 1540' by drilltime. DMC \$500; CMC \$1000; DC \$10,570; CC \$44,350

8-17-95 TD 2225' dolomite and anhydrite. Overnight puddle test. Made 234' in 3-1/2 hours, 66.8'/hr. Survey 2016' 3/4 deg. WOB 35#, RPM 65, PP 150#. Started equipment. TIH. P-1 at 2156' by gas show. Puddle test at 2176'. Recovered 2 bbls drilling fluid. Drilled - good gas show 2185-2190'. Tested at 2196'. Recovered 3.3 bbls drilling fluid. Drilled to 2225'. Top of anhydrite 2115-2120'. Waited on orders. Pulled 3 stands. Shut down overnight. DMC \$500; CMC \$1500; DC \$4558; CC \$48,900

8-18-95 TD 2340' dolomite and anhydrite. Overnight puddle test. Made 115' in 2 hours, 58.5'/hr. WOB 35K, RPM 65, PP 150#. Started equipment and TIH. Unloaded hole at 2225'. Recovered 1/4 bbl oil and 3-3/4 bbls drilling fluid. Cl 155K. Drilled 2245'. P2 top at 2235' by sample show. Tested at 2245'. Recovered 2" fluid = 2.67 bbls. Cl 133K, very slight oil shot on pits. Drilled to 2260'. Tested at 2260'. Recovered 2" fluid = 2.67 bbls. Cl 129K, no oil show. Drilled to 2280' and tested. Recovered 2" fluid = 2.67 bbls. Cl 129K with very slight trace oil. Drilled to 2300' and tested. Recovered 2.67 bbls fluid. Cl 142K, no oil. Drilled to 2320' and tested. Recovered 2.67 bbls fluid. Cl 152, no oil. Drilled to 2340'. Circulated and TOOH with 10 stands. Test overnight. DMC \$0; CMC \$1500; DC \$3444; CC \$52,352

8-19-95 TD 2425 dolomite and lime. Rig ged down and moved off rotary tools. Made 85 in 1-1/4 hours, 68/hr. WOB 35K, RPM 65. Started equipment. TIH. Unloaded hole at 2340. Recovered 27 bbls water. Drilled to 2425 and circulated. Tested at 2425. Recovered 3.3 bbls. Laid down drill pipe and nipped down rotary head. Rigged up casing crew and ran 56 joints 5-1/2 casing. Rigged up BJ and cemented. Set slips and cut off casing. DMC \$0; CMC \$1500; DC \$25,557; CC \$77,909
DETAILED CASING REPORT: Ran 56 joints 5-1/2 15.5# 8R J-55 LT&C (2434.41) casing, set at 2434.41. Regular guide shoe set at 2425. Float collar set at 2402.59. Cemented with 25 sacks gelled water and 325 sacks C + 1/4# celloseal + 5# gilsonite + 5/10% CF-14A. PD at 4:30 PM 8-18-95. Bumped plug to 1300 psi for 3 mins. Rig released at 5:00 PM 8-18-95.
NOTE: Marker joint at 2172-2177.

DRILLING REPORT

Page 2

Yates Pet. - Quincy "AMQ" State #15 (Unit K) 12-8S-27E Chaves Co., NM

8-20-21-59 Move in service unit to complete in San Andres P1 and P2. Plan to frac Tuesday and Wednesday.

8-22-95 Cleaned location. Set and tested anchors. Made cut off on 5-1/2" casing. Moved in and rigged up pulling unit. Installed tubinghead and BOP. Tested casing to 2000 psi. TIH with bit, scraper and 2-7/8" tubing to 2397'. Displaced casing with 2% KCl water. TOH with 2-7/8" tubing, scraper and bit. Rigged up wireline. TIH with logging tools. Pressured casing to 1000 psi and run CNL/CBL/CCL/GR logs from 2397-450'. TOH with logging tools and rigged down wireline. Frac P-2 today and plan to frac P-3 Wednesday.

8-23-95 Rigged up wireline. TIH with 4" casing guns. Correlated guns into place and perforated San Andres P-2 (1 SPF) with 16 - .42" holes as follows: 2243', 49', 54', 60', 64', 69', 2309', 13', 24', 27', 30', 51', 54', 61', 69' and 72'. TOH with casing guns and rigged down wireline. TIH with packer and 2-7/8" tubing. Set packer at 2176'. Acidized perfs 2243-2372' with 2000 gals 20% NEFE acid and 32 balls. Break down 2800 psi. Avg 4 BPM @ 1900 psi. Balled out. ISDP 1600 psi, 10 mins 1500 psi. Total load to recover 80 bbls. Bled well down. Unset packer and TOH with 2-7/8" tubing and packer. Removed BOP and nipples up frac head. Frac'd perfs 2243-2372' with 80,000 gals 35# x-link gel and 340,000# 20/40 Brady sand. Avg 42 BPM @ 2500 psi. ISDP 1800 psi. Total load to recover 1956 bbls water. Force closed well for 30 mins. Put well on 1/8" positive choke and bleed well down to pit overnight. Prep to clean sand out of casing, perforate, acidize and frac P-1. DC \$47,448

8-23-95 Rigged up wireline. TIH with 4" casing guns. Correlated guns into place and perforated San Andres P-2 (1 SPF) with 16 - .42" holes as follows: 2243', 49', 54', 60', 64', 69', 2309', 13', 24', 27', 30', 51', 54', 61', 69' and 72'. TOH with casing guns and rigged down wireline. TIH with packer and 2-7/8" tubing. Set packer at 2176'. Acidized perfs 2243-2372' with 2000 gals 20% NEFE acid and 32 balls. Break down 2800 psi. Avg 4 BPM @ 1900 psi. Balled out. ISDP 1600 psi, 10 mins 1500 psi. Total load to recover 80 bbls. Bled well down. Unset packer and TOH with 2-7/8" tubing and packer. Removed BOP and nipples up frac head. Frac'd perfs 2243-2372' with 80,000 gals 35# x-link gel and 340,000# 20/40 Brady sand. Avg 42 BPM @ 2500 psi. ISDP 1800 psi. Total load to recover 1956 bbls water. Force closed well for 30 mins. Put well on 1/8" positive choke and bleed well down to pit overnight. Prep to clean sand out of casing, perforate, acidize and frac P-1. DC \$47,448

8-24-95 Removed frac valve and installed BOP. TIH with 2-7/8" tubing. Tagged sand at 2077'. Reversed sand out of hole to 2397' (320' of sand). TOH with 2-7/8" tubing. Rigged up wireline. TIH with 4" casing guns. Correlated guns into place and perforated San Andres P-1 (1 SPF) with 52 - .42" holes from 2164-2215'. TOH with casing guns and rigged down wireline. TIH with RBP, packer and 2-7/8" tubing. Correlated tools into place and set RBP at 2230'. Tested RBP to 3000 psi for 6 mins. Spotted 100# of sand on top of RBP. Pulled up and set packer at 2081'. Acidized perfs 2164-2215' with 3000 gals 20% NEFE acid and 70 balls. Breakdown 2000 psi. Avg 4 BPM @ 1700 psi. Good ball action. ISDP 850 psi, 10 mins 200 psi. Bled well down. Unset packer and run thru perfs to knock balls off. TOH with 2-7/8" tubing and packer. Removed BOP and nipples up frac head. Frac'd perfs 2164-2215' with 80,000 gals 35# x-link gel and 400,000# 20/40 Brady sand. Avg 56 BPM @ 2330 psi. ISDP 1930 psi. Total load to recover 2085 bbls water. Force closed well for 20 mins. Shut well in overnight. Prep to clean sand out of casing to RBP and hang well on pump. DC \$50,645

8-24-95 Removed frac valve and installed BOP. TIH with 2-7/8" tubing. Tagged sand at 2077'. Reversed sand out of hole to 2397' (320' of sand). TOH with 2-7/8" tubing. Rigged up wireline. TIH with 4" casing guns. Correlated guns into place and perforated San Andres P-1 (1 SPF) with 52 - .42" holes from 2164-2215'. TOH with casing guns and rigged down wireline. TIH with RBP, packer and 2-7/8" tubing. Correlated tools into place and set RBP at 2230'. Tested RBP to 3000 psi for 6 mins. Spotted 100# of sand on top of RBP. Pulled up and set packer at 2081'. Acidized perfs 2164-2215' with 3000 gals 20% NEFE acid and 70 balls. Breakdown 2000 psi. Avg 4 BPM @ 1700 psi. Good ball action. ISDP 850 psi, 10 mins 200 psi. Bled well down. Unset packer and run thru perfs to knock balls off. TOH with 2-7/8" tubing and packer. Removed BOP and nipples up frac head. Frac'd perfs 2164-2215' with 80,000 gals 35# x-link gel and 400,000# 20/40 Brady sand. Avg 56 BPM @ 2330 psi. ISDP 1930 psi. Total load to recover 2085 bbls water. Force closed well for 20 mins. Shut well in overnight. Prep to clean sand out of casing to RBP and hang well on pump. DC \$50,645

DRILLING REPORT

Page 3

Yates Pet. - Quincy "AMQ" State #15 (Unit K) 12-8S-27E Chaves Co., NM

8-25-95 SICP 0 psi. Removed frac head and installed BOP. TIH with 2-7/8" tubing. Tagged sand at 1885'. Reversed 345' of sand out of casing to RBP at 2230'. TOH with 2-7/8" tubing. Turned well over to production to hang well on pump. Pumping P-1 at 3:30 PM Thursday. DC \$2188

8-26-28-95 Pumping.

8-29-95 Pumping.

8-30-95 Pumping.

8-31-95 Pumping.

9-1-95 Pumping.

9-2-5-95 Pumping.

9-6-95 Pumping.

9-7-95 Pumping.

9-8-95 Pumping.

9-9-11-95 Pumping.

9-12-95 Pumping.

9-13-95 Pumping.

9-14-95 Pumping.

9-15-95 Pumping.

9-16-18-95 Pumping.

9-19-95 Pumping.

9-20-95 Pumping.

9-21-95 Pumping.

9-22-95 Pumping.

9-25-95 TD 2425'; PBTD 2230'. On a 24 hour Official Potential test taken 9-7-95, well pumped 22 BOPD, TSTM MCFGPD, 186 BWPD with a Gravity of 28.5 deg, thru perms 2164-2215' San Andres. WELL IS PRODUCING. FINAL REPORT.

YATES PETROLEUM CORPORATION
CHRONOLOGICAL DRILLING REPORT
Quincy "AMQ" State #16
Unit N
12-8S-27E
Chaves County, New Mexico

3-14-97 Location: 300' FSL & 1650' FWL of Section 12-8S-27E, Chaves County, New Mexico. API No.: 30-005-63078. Elevation: 3939' GR. PTD: 2200' San Andres. Drilling Contractor: _____. Dirt Contractor: Skull Construction. Building location.

3-15-97 Building location.

3-16-97 Prep to spud.

3-17-97 TD 40'. Waiting on rotary tools. Spudded 9:30 AM 3-16-97 with Auger Air. Notified NMOCD Answering Service. Drilled 20" hole to 40'. Set 40' of 16" conductor pipe.

3-18-97 TD 40'. Moving in rotary tools.

3-19-97 Drilling 311'. Made 271' in 9 hours, 30.11'/hr. MW air mist. WOB all, RPM 80, SPM air mist/140#. Resumed drilling 9:00 PM 3-18-97. DC \$5052; CC \$14,043

3-20-97 Drilling 521'. Made 210' in 4 hours, 52.50'/hr. MW air mist. WOB all, RPM 80. TD 12-1/4" hole at 11:15 AM 3-19-97. Ran 11 joints 8-5/8" 24# J-55 8rd ST&C (471.94') casing, set at 469'. Texas Pattern Notched guide shoe set 469'. Insert float set 426.95'. Cemented with 300 sxs "C" + 2% CaCl2 (yld 1.32, wt 14.8). PD 5:15 PM 3-19-97. Bumped plug to 900 psi, float held OK. Circulated 51 sacks. WOC. Drilled out 5:15 AM 3-20-97. WOC 12 hours. Nippled up and tested to 1000 psi for 30 minutes. Resumed drilling 7-7/8" hole with bit #2. *Notified Brian Arrant with NMOCD (Artesia) - no witnesses. DC \$14,952; CC \$28,994

3-21-97 Drilling 1643'. Made 1122' in 19-1/2 hours, 57.54'/hr. MW air mist. WOB 35K, RPM 60. Survey 1495' 3/4 deg. DC \$16,503; CC \$45,496

3-22-97 TD 2215'. Running bubble test. Made 572' in 12-3/4 hours, 44'/hr. WOB 35K, RPM 60. POH and nipped up. Circulated and POH with 10 joints. Testing. DC \$9145; CC \$54,641

3-23-97 TD 2215'. Released rig. Tested hole. Lay down drill pipe and drill collars. Nippled down. Rigged up casing crew. Ran 54 joints (2218.32') casing, set at 2215' as follows:

1 jt 5-1/2" 15.5# J-55 (SB)	42.00'
4 jts 5-1/2" 15.5# J-55 (SB)	160.37'
12 jts 5-1/2" 15.5# J-55 (V)	496.90'
1 jt marker joint	19.98'
36 jts 5-1/2" 15.5# J-55 (V)	1496.85'

Regular guide shoe set 2213.73'. Float collar set 2170.78'. Bottom marker set 1493.53'. Cemented with 145 sacks 35/65 Poz "C" gel + 1/4# celloflake (yld 1.98, wt 12.4). Tailed in with 200 sxs "C" + .6% FL62, 2% CD-32, .10% sodium metasilicate (yld 1.32, wt 14.8). Circulated 34 sacks. PD 3:00 PM. Bumped plug to 1500 psi for 2 minutes, OK. Released rig 6:00 PM 3-22-97. DC \$23,423; CC \$78,064

3-25-97 Cleaned location. Moved in and rigged up pulling unit. Unloaded tubing. Nippled up wellhead. Set and fill frac tanks with 250 bbls water. Shut down due to wind. DC \$2332

3-26-97 Nippled up BOP. TIH with bit, collars and 2-7/8" tubing. Tagged float collar at 2172'. Drilled out float collar and 32' cement to 2204'. Circulated well clean. TOH with tubing, collars and bit. Rigged up wireline. TIH with CNL/GR/CCL. Log CNL from PBTD to surface. TIH with CBL/GR/CCL. Logged CBL from PBTD to 1000'. TOH with logging tools. Rigged down wireline. Prep to perforate San Andres. DC \$6562; CC \$8894

3-27-97 Rigged up wireline to perforate San Andres. TIH with 4" casing guns. Correlated guns in and perforate from 2138-77' (2 SPF) with 80 - .42" holes. TOH with casing guns. Rigged down wireline. TIH with SN and 2-7/8" tubing. Spotted 200 gals acid at 2180'. Pulled up to 2104'. Acidized San Andres with 7000 gals 20% HCL. Broke at 1900 psi at 4.5 BPM @ 1830 psi. Some ball action. ISDP 1450 psi, 15 mins 100 psi. Total load to recover 195 bbls. Rigged down BJ. Rigged up swab. Swabbed as follows:

TIME	FL	#SR	OIL	WATER	GAS
11 AM	surface	2	0	12	
Noon	800'	2	5%	16	good
1 PM	800'	1	100%	16	good
2 PM	800'	1	100%	12	good - 140 psi
3 PM	1200'	1	80%	12	strong
4 PM	1300'	2	60%	9	strong*
5 PM	1600'	2	60%	5	strong*
6 PM	1600'	2	60%	5	strong*
7 PM	1600'	2	60%	5	strong*

DR

Page 2:

Yates Petroleum - Quincy "AMQ" State #16 (Unit N) 12-8S-27E Chaves Co., NM

8 PM	1600'	2	60%	5	strong*
9 PM	1600'	2	60%	5	strong*
10 PM	1600'	2	60%	5	strong*
11 PM	1600'	2	60%	5	strong*
12 AM	1600'	2	60%	5	strong*
1 AM	1600'	2	60%	5	strong*
2 AM	1600'	1	60%	5	strong*
3 AM	1600'	2	60%	5	strong*
4 AM	1600'	2	60%	5	strong*
5 AM	1600'	2	60%	5	strong*
6 AM	1600'	2	60%	5	strong - 200# on csg

*strong gas after each run

Recovered 90 bbls oil and 56 bbls water. Load left 139 bbls. DC \$17,246; CC \$26,140

3-28-97 Rigged up pump truck. Pumped 30 bbls 2% KCL water. TOH with 2-7/8" tubing. Turned well over to production to put well on pump. DC \$1875; CC \$28,015

3-27-97 Running rods - on at 4:00 PM.

3-28-97 Down - lutch burned out.

3-29-97 Pumped 66 bbls oil, 150 bbls water and 105 MCF.

3-30-97 Pumped 70 bbls oil, 20 bbls water and 60 MCF.

4-1-97 TD 2215'; PBTD 2204'. On a 24 hour Official Potential test taken 3-30-97 well pumped 70 BOPD, 60 MCF/GPD and 20 BWPD at a GOR of 857:1, gravity N/A, through perforations 2138-2177' San Andres. WELL IS PRODUCING.

FINAL REPORT

YATES PETROLEUM CORPORATION
CHRONOLOGICAL DRILLING REPORT
Quincy "AMQ" State #17
Unit N
12-8S-27E
Chaves County, New Mexico

3-18-97 Location: 330' FSL & 2310' FWL of Section 12-8S-27E, Chaves County, New Mexico. API No.: 30-005-63079. Elevation: 3939' GR. Drilling Contractor: United Rig #4. Dirt Contractor: Shull Construction.

3-19-97 Building location.

3-20-97 Waiting on rotary tools/Stand by. Location finished 3-19-97.

3-21-97 Waiting on rotary tools/Stand by.

3-22-24-97 Waiting on rotary tools/Stand by.

3-25-97 Waiting on rotary tools/Stand by.

3-26-97 Waiting on rotary tools/Stand by.

3-27-97 Waiting on rotary tools/Stand by.

3-28-97 Waiting on rotary tools/Stand by.

3-29-30-97 Waiting on rotary tools/Stand by.

3-31-97 Moving in rotary tools.

4-1-97 Rigging up rotary tools.

4-2-97 TD 475'. WOC. Made 475' in 10.25 hours, 46.34'/hr. MW air mist. WOB all, RPM 80. Rigged up and start equipment. Resumed drilling at 10:45 AM 4-1-97. Rig repair - rotary table. TD 12-1/4" hole at 10:30 PM 4-1-97. Circulated and TOH. Rigged up casing crew and ran 8-5/8" casing. Cemented casing. WOC. NOTE: Notified Betty Rallins with NMOCD in Artesia of spud. Notified NMOCD answering service of running casing - no witness. DC \$18,531; CC \$24,985
DETAILED CASING REPORT: Ran 11 joints 8-5/8" 24# J-55 8rd ST&C (471.73') casing, set at 468'. Texas Pattern Notched guide shoe set at 468'. Insert float set at 426'. Cemented with 300 sacks "C" + 2% CaCl2 (yield 1.32, weight 14.8). PD at 1:30 AM 4-2-97. Bumped plug to 750 psi, held OK. Circulated 150 sacks cement. WOC.

4-3-97 Drilling 1435'. Made 960' in 15.5 hours, 61.94'/hr. MW airmist. WOB 35#, RPM 60. Survey 549' 1/4 deg and 1022' 1/2 deg. Nippled up and TIH. WOC. Drilled out at 3:00 PM 4-2-97. WOC 13-1/2 hours. Reduced hole to 7-7/8" and resumed drilling. NOTE: Ran Davis-Lyncy float equipment. Centralizers on joints #1, 3, and 5. DC \$14,277; CC \$39,261

4-4-97 TD 2222' San Andres. Testing. Made 787' in 16 hours, 49'/hr. WOB 35,000#, RPM 60. Survey 1522' 1/2 deg. TIH with bit. TD 7-7/8" hole at 3:00 AM. Circulated. Laid down drill pipe and shut down test well. TIH to run test. Test - 10 bbls oil and 10 bbls water. DC \$12,335; CC \$51,596

4-5-97 TD 2222' San Andres. Rig released. Made 0'. MW airmist. Circulated. Laid down drill pipe and drill collars. Nippled down rotating head. Rigged up casing crew and ran 5-1/2" casing. Rigged up cementers and cemented casing. Nippled down and set slips. Rig released at 4:15 PM 4-4-97. NOTE: 3 hour flow test recovery 10 bbls oil and 10 bbls water. DC \$24,471; CC \$76,068
DETAILED CASING REPORT: Ran 56 joints (2234.63') casing, set at 2222' as follows:
6 joints 5-1/2" 15.50# J-55 SB (186.21')
50 joints 5-1/2" 15.50# J-55 Varn (2048.42')
Regular guide shoe st at 2222'. Float collar set at 2216.46'. Bottom marker set at 2035.79'. Cemented with 145 sacks "C" (35:65:6) with .25#/sx Celloflake (yield 1.98, weight 12.4). Tailed with 200 sacks "C" with .50#/sx FL-52 (yield 1.32, weight 14.8). PD at 2:15 PM 4-4-97. Bumped plug to 1200 psi for 5 mins. Circulated 23 sacks. Float and casing held OK. Rig released at 4:15 PM 4-4-97. NOTE: Ran Davis Lynch float equipment. Centralizers on joints #1, 3, 5 and 8. Displaced hole with 2% KCL.

4-6-97 Waiting on completion unit.

4-7-97 Cleaned location. Set and tested anchors. Rigged up crane truck and wireline. TIH with CNL/GR/CCL. TAgged PBTD at 2085'. TOH with CNL/GR/CCL. Rigged down wireline. Prep to drill out cement. DC \$3035; CC \$3035

4-8-97 Moved in and rigged up pulling unit. Nippled up BOP. TIH with bit, collars, and 2-7/8" tubing. Tagged cement at 2116'. Rigged up swivel and drilled out 100' of cement to 2216'. Circulated well clean. TOOH with tubing, collars and bit. Rigged up wireline. TIH with CNL/CBL/GR/CCL. Logged CNL from 2216' to surface. TOOH with logging tools. Shut well in. Prep to perforate San Andres. DC \$7362; CC \$10,397

4-9-97 Rigged up wireline. TIH 4" casing guns to perforate San Andres. Correlated guns in and perforated from 2161-2200' (SPF) with 79 - .42"

holes. TOH with casing guns. Rigged down wireline. TIH with 2-3/8" tubing and SN. Spotted 2 bbls acid. Pulled up. SN at 2113'. Acidized San Andres with 7000 gals 20% HCL carrying 100 ball sealers. Broke at 1850. Avg rate 4 BPM, avg 1150 psi. ISDP 1120 psi, 15 mins 214 psi. Total load to recover 178 bbls. Good ball action. Rigged down BJ and rigged up swab.

TIME	FL	#SR	OIL	WATER	GAS
2 PM	100#			10	
3 PM	50#		10 bbls	0	
4 PM	0#		9 bbls	0	
5 PM	1000'	4	10%	12	
6 PM	1400'	4	10%	12	
7 PM	1400'	4	10%	12	
8 PM	1400'	4	10%	12	good
9 PM	1400'	3	10%	9	good
10 PM	1400'	3	10%	9	good
11 PM	1400'	3	10%	9	good
12 PM	1400'	3	10%	9	good
1 AM	1400'	2	2.5 bbls	2.5	good
2 AM	1400'	2	2.5	2.5	good
3 AM	1400'	2	2.5	2.5	good

Flows after every run

4 AM	1400'	2	2.5	2.5	good
5 AM	1400'	2	2.5	2.5	good
6 AM	1400'	2	2.5	2.5	good - 200# on csg

Load recovered 41 bbls water, 94 bbls oil. Prep to run rods. DC \$15,478; CC \$25,875

4-10-97

Continued to swab.

TIME	FL	#SR	OIL	WATER	GAS
7 Am	1400'	2	2.5	2.5	good
8 AM	1400'	2	2.5	2.5	good
9 AM	1400'	2	2.5	2.5	good
10 AM	1400'	2	2.5	2.5	good

Rigged down swab. Rigged up pump truck. Pumped 30 bbls 2% KCL. Nippled up BOP. TOH with tubing. TIH wtih bull plug, perf sub, 1 joint 2-7/8" tubing, SN and tubing. Turned well over to production. DC \$2596; CC \$28,471

4-10-97
4-11-97
4-12-97
4-13-97
4-14-97
4-15-97
4-16-97
4-17-97
4-18-97
4-19-97
4-20-97
4-21-97
4-22-97
4-23-97
4-24-97
4-25-97
4-26-97
4-27-97
4-28-97
4-30-97

Pumped 10 bbls oil, 73 bbls water and 14 MCF.
Pumped 189 bbls oil, 0 bbls water and 42 MCF.
Pumped 19 bbls oil, 91 bbls water and 55 MCF.
Pumped 56 bbls oil, 37 bbls water and 39 MCF.
Pumped 100 bbls oil, 31 bbls water and 41 MCF.
Pumped 86 bbls oil, 10 bbls water and 44 MCF.
Pumped 100 bbls oil, 37 bbls water and 40 MCF.
Pumped 84 bbls oil, 48 bbls water and 50 MCF.
Pumped 94 bbls oil, 32 bbls water and 45 MCF.
Pumped 68 bbls oil, 20 bbls water and 50 MCF.
Pumped 85 bbls oil, 25 bbls water and 50 MCF.
Pumped 87 bbls oil, 29 bbls water and 42 MCF.
Pumped 45 bbls oil, 32 bbls water and 37 MCF.
Pumped 66 bbls oil, 30 bbls water and 37 MCF.
Pumped 74 bbls oil, 12 bbls water and 35 MCF.
Pumped 61 bbls oil, 16 bbls water and 40 MCF.
Pumped 95 bbls oil, 16 bbls water and 33 MCF.
Pumped 48 bbls oil, 20 bbls water and 30 MCF.
Pumped 90 bbls oil, 25 bbls water and 30 MCF.

TD 2222'; PBTD 2216'. On a 24 hour Official Potential test taken on 4-19-97 well pumped 68 BOPD, 50 MCFGPD and 20 BWPD at a GOR of 735:1, gravity N/A, through perforations 2161-2200' San Andres. WELL IS PRODUCING. FINAL REPORT