

Copy to OCC Hable
1/12/56
HUMBLE OIL & REFINING COMPANY

MIDLAND, TEXAS

January 17, 1956

J. W. HOUSE

1956 JAN 18 AM 3:55

Re: Reclassification of Humble's New Mexico State "G" Well No. 4, Sec. 26, T-21-S, R-36-E, Arrow Pool, Lea County, New Mexico

New Mexico Oil Conservation Commission
Box 871
Santa Fe, New Mexico

Gentlemen:

As a result of recent studies performed in conjunction with reconditioning wells in the Arrow Pool, it is apparent that our New Mexico State "G" Well No. 4, located 1980 feet from the North line and 1980 feet from the East line of Section 26, T-21-S, R-36-E, Lea County, New Mexico, should be reclassified from an Arrow Pool oil well to an Arrow Pool gas well. The well is presently carried on the Arrow Pool oil proration schedule with a 4 barrel allowable and a 16,915 - 1 gas-oil ratio.

The Arrow Pool as defined by Order R-520 includes Section 26, T-21-S, R-36-E, and designated the vertical limits to include the Yates, Seven Rivers and Queen formations. Our New Mexico State G-4 produces from the Queen formation through perforations from 3580-3612 feet and 3644-3754 feet.

On a 21-1/2 hour test on January 7, 1956, through an 18/64-inch choke, the Well produced with a gas-oil ratio of 1,011,429 - 1. The Arrow Pool rules state that a gas well will be any well having a gas-oil ratio in excess of 100,000 cubic feet per barrel.

In connection with our request that the well be reclassified as an Arrow Pool gas well, we have attached a gas unit plat dedicating the N/2 of Section 26, T-21-S, R-36-E. We also support our application with the following statements:

1. Name of well and location - New Mexico State "G" Well No. 4, located 1980 feet from the North line and 1980 feet from the East line of Section 26, T-21-S, R-36-E, Lea County, New Mexico.
2. New Mexico State G-4 was completed in the Arrow Pool prior to the effective date of Order R-520.
3. The acreage to be dedicated is 320 acres described as the N/2 of Section 26, T-21-S, R-36-E, Lea County, New Mexico.
4. The non-standard gas proration unit consists of contiguous quarter-quarter sections.

NSP-233
due 2/18/56
320 Ac
NSP
N/2 Sec. 26
21S-36E

5. The non-standard gas proration unit lies wholly within a single governmental section.
6. The entire non-standard gas proration unit may reasonably be presumed to be productive of gas.
7. All operators owning interests within 1500 feet of the well are being notified by registered mail.
8. We have attached a table containing various test data and curves.

We request reclassification of the well and the assignment of the 320 acre non-standard gas proration unit under the rules and regulations for the Arrow Pool as set forth in Order R-520. If you are unable to grant our request by an administrative approval, then we request that you set this up for the first hearing date, either an examiner or regular hearing.

I hereby certify that the information given above is true and complete to the best of my knowledge.

Yours very truly,

HUMBLE OIL & REFINING COMPANY

J. W. HOUSE,
Division Superintendent

By: H. L. Hensley
H. L. Hensley,
Asst. Div. Superintendent

Sworn to and subscribed before me this the 17th day of January, 1956.

Shirley J. Elmer SHIRLEY J. ELMER
Notary Public in and for
Midland County, Texas

AJT/se
Attachment

HUMBLE OIL & REFINING COMPANY

MIDLAND, TEXAS

January 17, 1956

J. W. HOUSE

Gulf Oil Corporation
Box 2167
Hobbs, New Mexico

Sinclair Oil & Gas Company
Box 1470
Hobbs, New Mexico

Gentlemen:

Please find attached a copy of our application to the New Mexico Oil Conservation Commission for a reclassification of our New Mexico State "G" Well No. 4, located 1980 feet from the North and East lines of Section 26, T-21-S, R-36-E, Lea County, New Mexico, from an oil well in the Arrow Pool to a gas well in the Arrow Pool and the assignment of a 320 acre non-standard gas proration unit.

We have attached four (4) copies of a waiver which we would appreciate your signing. Please retain a copy for your files and return the other three to this office.

Thanking you in advance for your consideration of this matter.

Yours very truly,

HUMBLE OIL & REFINING COMPANY

J. W. HOUSE,
Division Superintendent

By: *W. P. Henry*
Asst. Div. Superintendent

AJT/se
Attachment

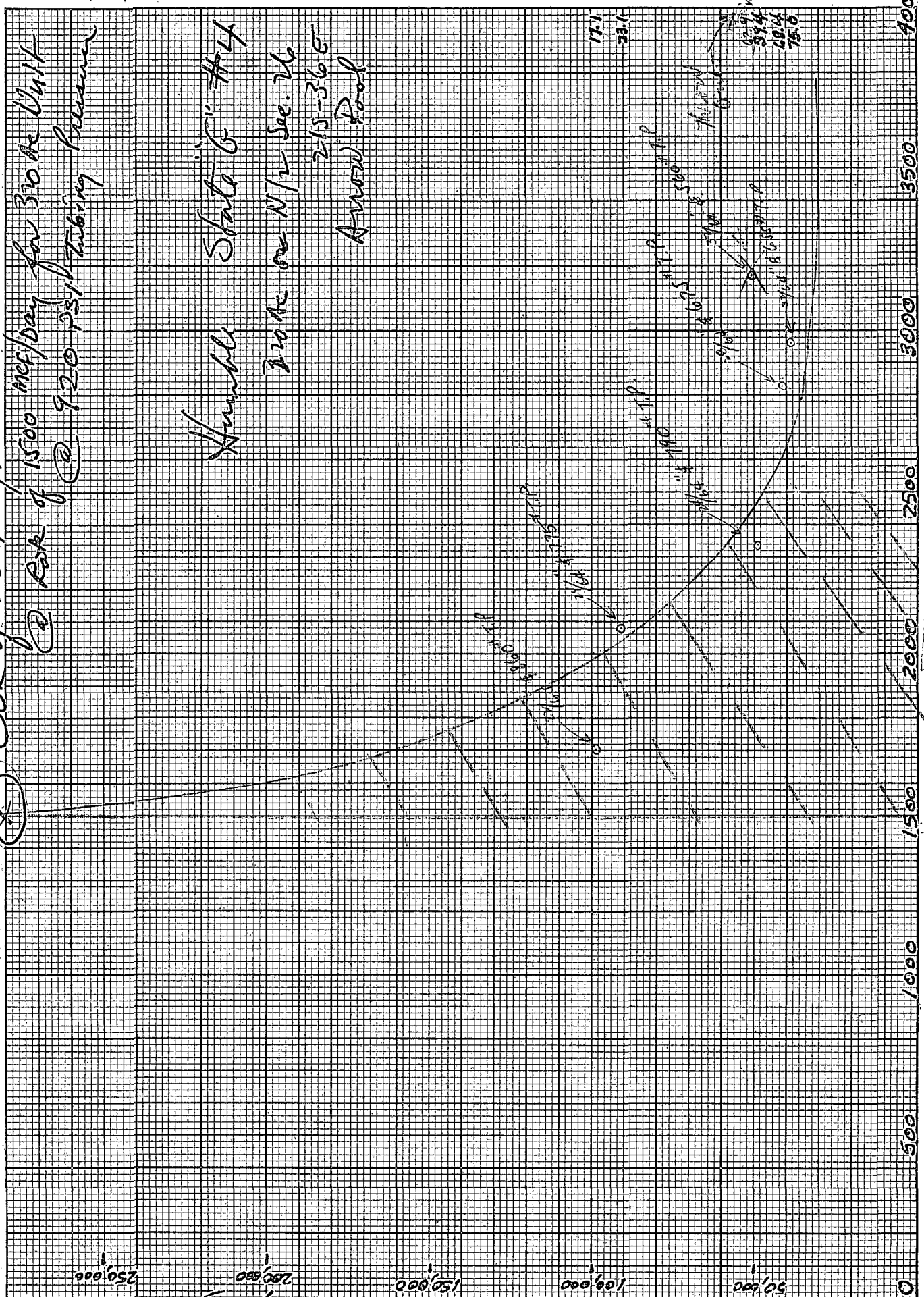
GOR of 280,000

@ Rate of 1500 mcf/day for 30 ac Unit
@ 920 psi tubing pressure

(C.F./Bbl)

GAS-OIL-RATIO

Shut-in State G" #4
Zone on N/2 Sec. 26
215-366
Annu Pool



GAS PRODUCTION (mcf/day)

OIL PRODUCTION (Bbls./day)

NEW MEXICO STATE "G" #4

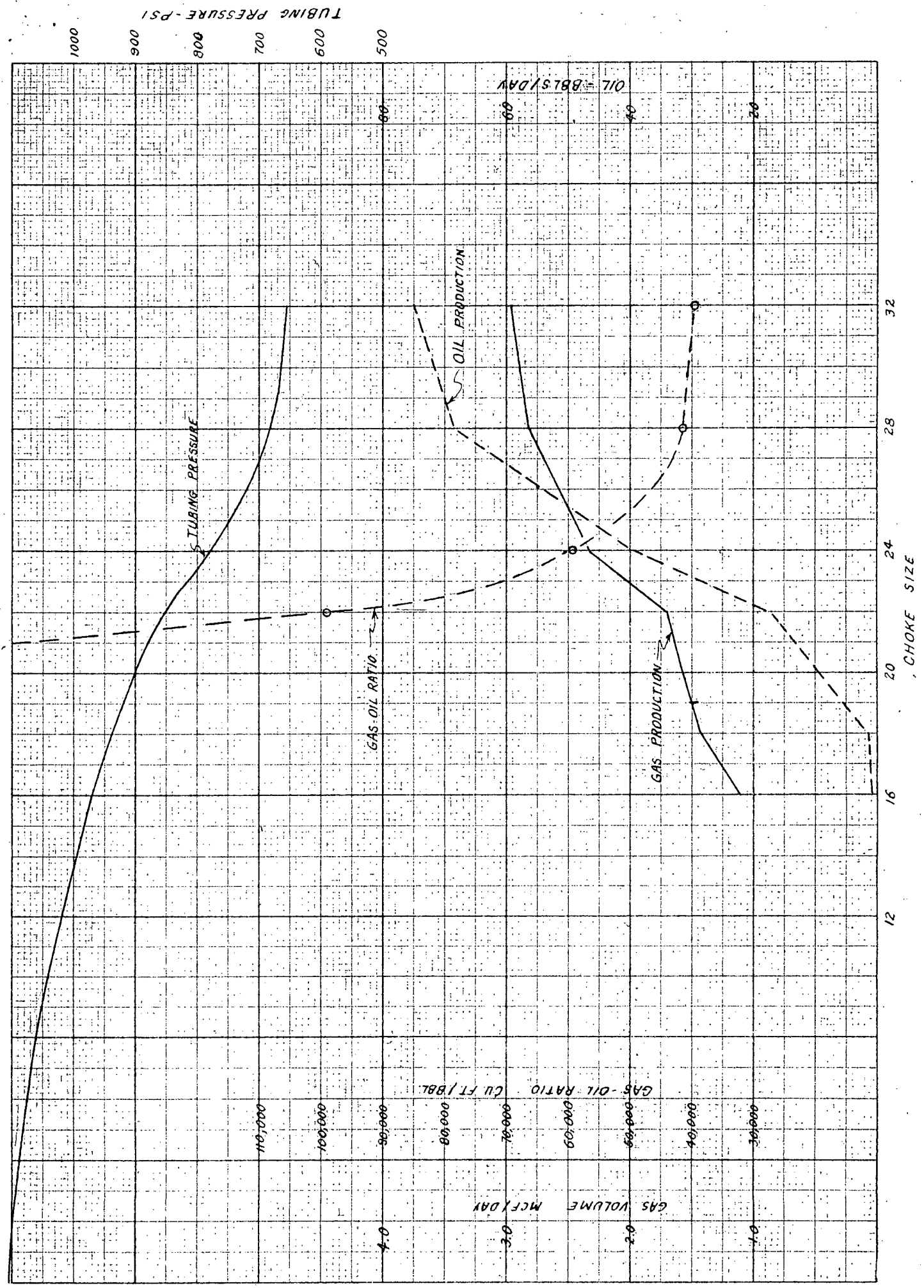
$$\begin{array}{r} 570 \\ 250 \\ \hline 600 \end{array}$$

$$\begin{array}{r} 057 \\ 057 \\ \hline 057 \end{array}$$

Date	Choke Size	Tbg. Press.	Leng. Test	Oil Prod.	Rate BOPD	Gas MCF/Day	Gas-Oil Ratio
Jan. 5	32/64	550	24	60.0	60.0	3176	52,933
Jan. 6	32/64	570	7	21.25	72.9	3176	43,566
	32/64	560	31	81.25	62.9	3176	50,493
Jan. 10	32/64	655	16	50.01	75.0	2962	39,493 ✓
Jan. 9	28/64	675	6	17.09	68.4	2831	41,400 ✓
Jan. 6	24/64	775	17	15.42	21.8	2084	95,596
Jan. 7	24/64	775	2.5	3.33	32.0	2092	65,375
	24/64	775	19.5	18.75	23.1	2082	90,130 ✓
Jan. 9	24/64	790	16	26.26	39.4	2340	59,391
Jan. 10	24/64	790	1	1.67	40.1	2340	58,354
	24/64	790	17	27.92	39.4	2340	59,391 ✓
Jan. 10	22/64	855	1	.83	19.9	1665	83,668
Jan. 10	22/64	860	6	4.17	16.7	1712	102,515
	22/64	860	7	5.00	17.1	1700	99,415 ✓
Jan. 7	18/64	910	5.5	-	-	1477	-
Jan. 7	18/64	995	16	1.25	1.9	1385	728,947
	18/64		21.5	1.25	1.4	1416	1,011,429 /
Jan. 11	16/64	970	1	-	-	1106	-
Jan. 11	16/64	970	5	0.21	1.01	1064	1,053,465
	16/64	970	6	0.21	0.84	1064	1,266,667

Shut-in Build up pressure 970#, 16/64" choke, after 2 min. 1000#, after 10 min. 1010#, after 90 min. 1030#, after 19 hr. 30 min. 1105#.

NEW MEXICO STATE G-4



NEW MEXICO
OIL CONSERVATION COMMISSION

Gas Well Plat

Date January 16 1956

HUMBLE OIL & REFINING CO.

New Mexico State "G"

4

Operator

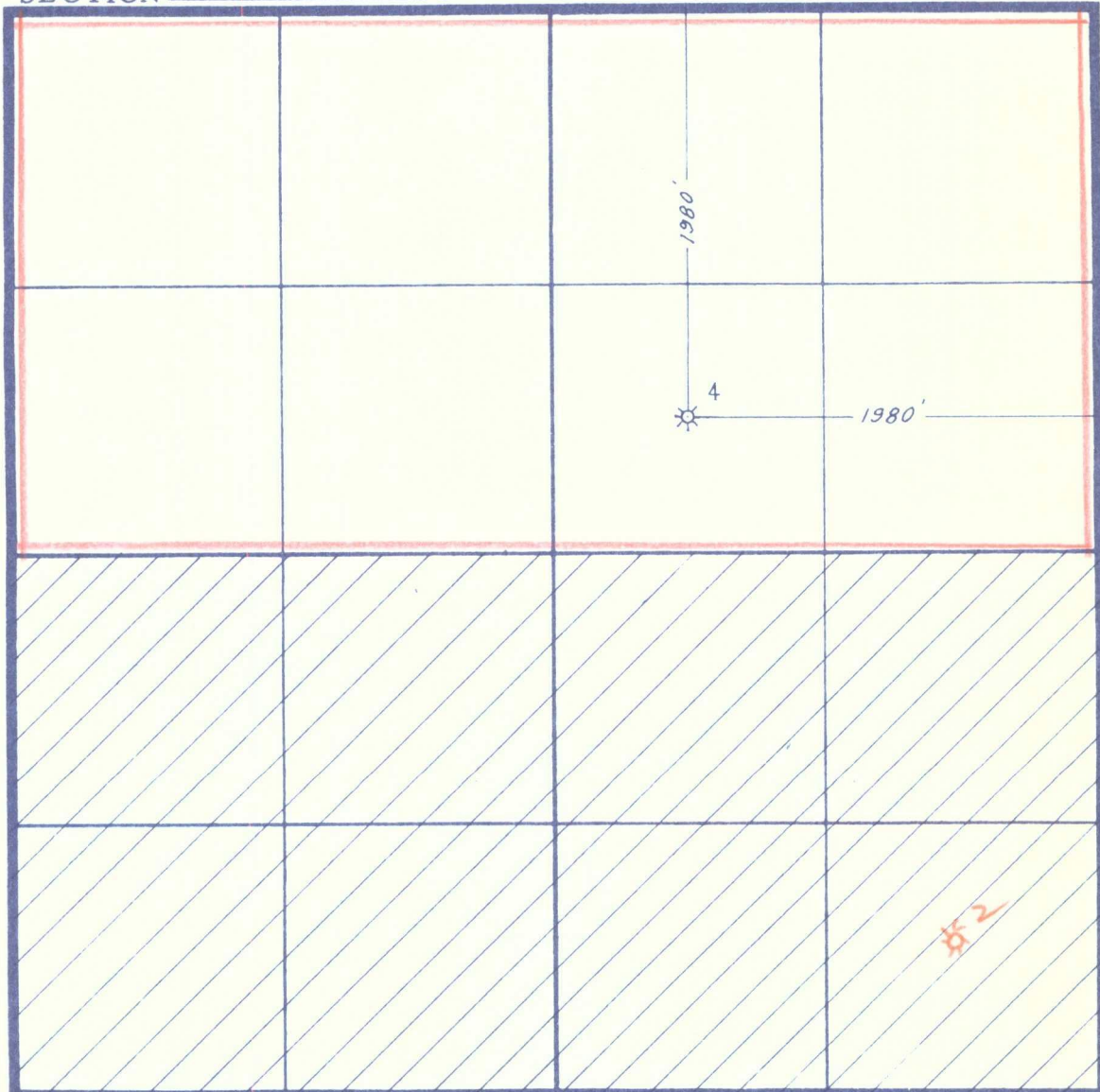
Lease

Well No.

Name of Producing Formation Queen Pool Arrow Gas

No. Acres Dedicated to the Well 320 Ac.

SECTION 26 TOWNSHIP 21 - 5 RANGE 36 - E

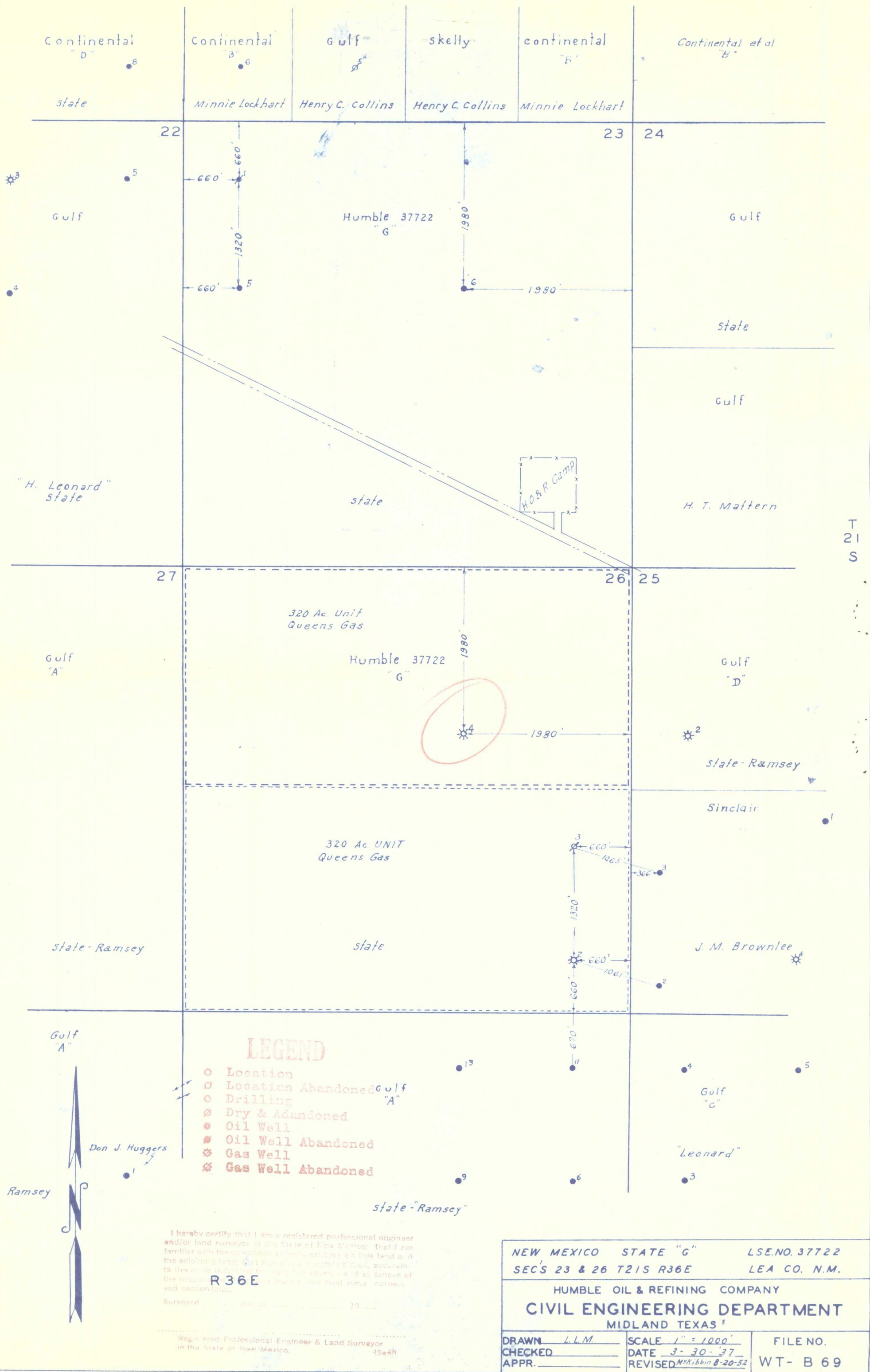


I hereby certify that the information given above is true and complete to the best of my knowledge.

1. Is this gas well a dual completion? ~~Yes~~ No
2. Are there any other dually completed wells within the dedicated acreage? ~~Yes~~ No

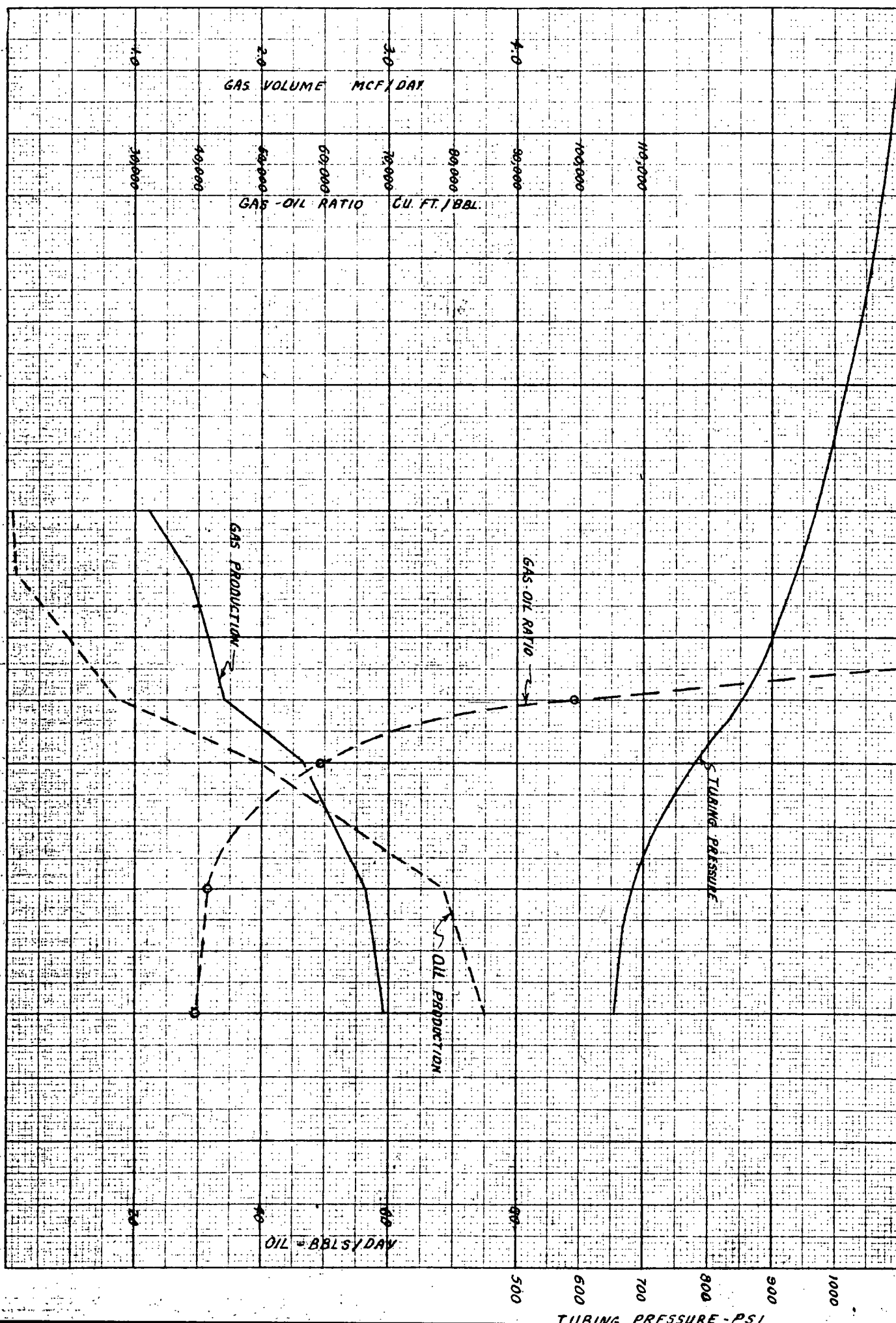
Name H. L. Stensley
Position Asst. Division Superintendent
Representing Humble Oil & Refining Co.
Address Midland, Texas

(over)



NEW MEXICO STATE G-4

CHOKE SIZE



NEW MEXICO
OIL CONSERVATION COMMISSION

Gas Well Plat

Date January 16 1956

HUMBLE OIL & REFINING CO.

New Mexico State "G"

4

Operator

Lease

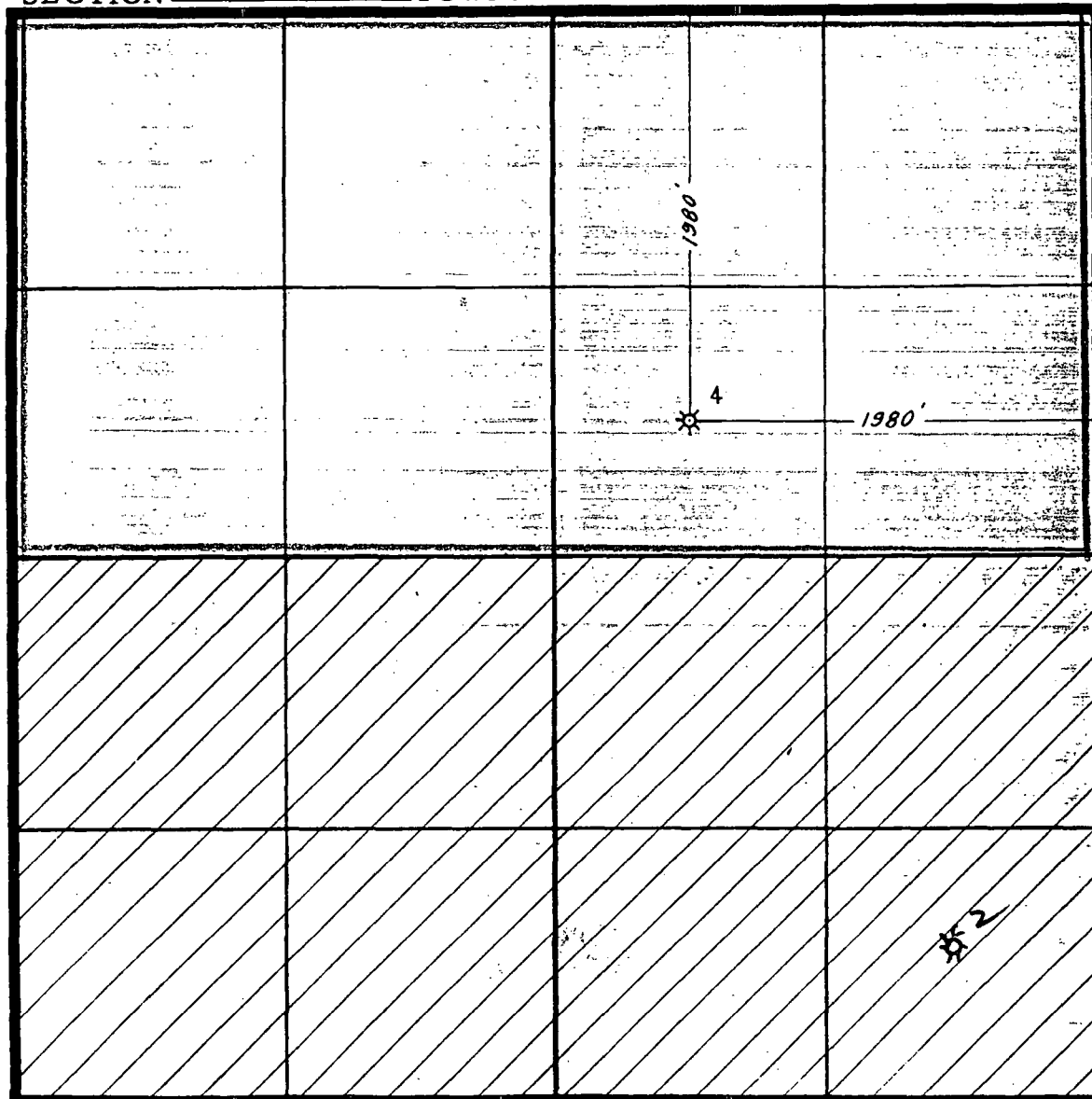
Well No.

Name of Producing Formation Queen

Pool Arrow Gas

No. Acres Dedicated to the Well 320 Ac.

SECTION 26 TOWNSHIP 21-S RANGE 36-E



I hereby certify that the information given above is true and complete to the best of my knowledge.

1. Is this gas well a dual completion? ~~Yes~~ No
2. Are there any other dually completed wells within the dedicated acreage? ~~Yes~~ No

Name H. E. Stenley
Position Asst. Division Superintendent
Representing Humble Oil & Refining Co.
Address Midland, Texas

(over)

