



MAIN OFFICE 000

CITIES SERVICE OIL COMPANY

BOX 97,500 BROADMOOR BLDG.
HOBBS, NEW MEXICO

August 7, 1963

1963 AUG 9 PM 1:12

*NS P-660
30 days
Effective date oil well
allowable was assigned
to State "S" #3
Done Sept 9*

N. M. Oil Conservation Commission
Box 871
Santa Fe, New Mexico

Attention: Mr. A. L. Porter, Jr.

RE: Non standard gas
proration unit,
Blinebry Gas Pool,
Lea County, New Mex.

Gentlemen:

It is respectfully requested that the Oil Conservation Commission authorize administratively a non standard gas proration unit covering the SW $\frac{1}{4}$ of the NW $\frac{1}{4}$, Section 15, 40 acres, to be dedicated to the State "S" #1, located 660 FWL, 1980 FNL, Section 15, Township 21S, Range 37E, Blinebry Gas Pool, Lea County, New Mexico.

The State "S" #1 now has an 80 acre allocation but due to the completion of State "S" #3 as a Blinebry Oil well it is requested that 40 acres be assigned to State "S" #3 and the remaining 40 acres of the gas unit be assigned to the State "S" #1.

*located in Unit #7
1905FWL
2055FWL*

Very truly yours,

George M. Geyer
George M. Geyer
District Superintendent

CTA/cs



CITIES SERVICE OIL COMPANY

BOX 97,500 BROADMOOR BLDG.

HOBBS, NEW MEXICO

August 7, 1963

N. M. Oil Conservation Commission
Box 871
Santa Fe, New Mexico

Attention: Mr. A. L. Porter, Jr.

RE: Non standard gas
proration unit,
Blinebry Gas Pool,
Lea County, New Mex.

Gentlemen:

It is respectfully requested that the Oil Conservation Commission authorize administratively a non standard gas proration unit covering the SW $\frac{1}{4}$ of the NW $\frac{1}{4}$, Section 15, 40 acres, to be dedicated to the State "S" #1 located 660 FWL, 1980 FNL, Section 15, Township 21S, Range 37E, Blinebry Gas Pool, Lea County, New Mexico.

The State "S" #1 now has an 80 acre allocation but due to the completion of State "S" #3 as a Blinebry Oil well it is requested that 40 acres be assigned to State "S" #3 and the remaining 40 acres of the gas unit be assigned to the State "S" #1.

Very truly yours,

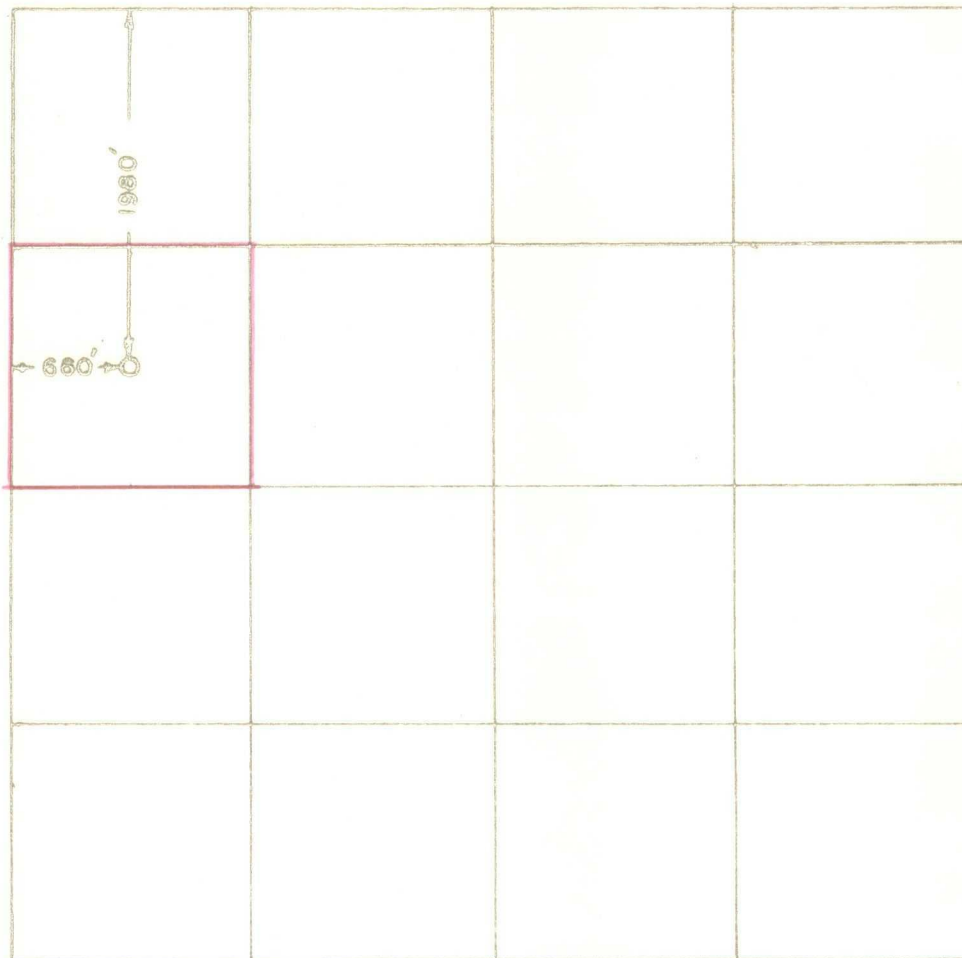
George M. Geyer
District Superintendent

CTA/cs

CITIES SERVICE OIL COMPANY

STATE LEASE S NO. 1

WELL LOCATION SURVEY PLAT



SEC. 15 TWP. 21S, RGE. 37E



I HEREBY CERTIFY THAT THIS PLAT WAS MADE FROM NOTES TAKEN IN THE FIELD BY ME IN AN ACTUAL BOUNDARY SURVEY AND THAT THE SAME IS TRUE AND CORRECT TO THE BEST OF MY KNOWLEDGE AND BELIEF.

John W. West

JOHN W. WEST
P.E. & L.S. NO. 676

MARCH 19, 1948