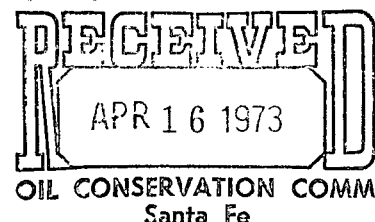


# SHELL OIL COMPANY

PETROLEUM BUILDING  
P.O. BOX 1509  
MIDLAND, TEXAS 79701

April 13, 1973

*NSP-914*  
*104 F Due May 6*



Subject: Application for 40-acre  
Non-standard gas proration unit  
Blinebry (Gas) Field  
Lea County, New Mexico

New Mexico Oil Conservation Commission  
P. O. Box 2088  
Santa Fe, New Mexico 87501

Attention Mr. A. L. Porter, Jr.  
Secretary-Director

Gentlemen:

This is Shell Oil Company's application for a 40-acre non-standard gas proration unit to be dedicated to Shell's Argo "A" No. 5, Blinebry (Gas) Field, Lea County, New Mexico. As shown on the attached plat, this well is located 1980 feet from north line and 2130 feet from west line, Sec. 22, T-21-S, R-37-E, Lea County, New Mexico.

Shell's Argo "A" No. 5 was completed as an 80-acre Blinebry (Gas) producer in February 1953, and converted to Blinebry (Oil) in April 1963. January 1, 1973, the subject well was reclassified as a gas well. Work was performed in January and in April to render the well an oil producer but failed. The well was shut in at that time.

Enclosed is a copy of the registered notification mailed to Gulf Oil Corporation (the only owner of 40-acre tract directly or diagonally offsetting the 40-acre tract of the proration unit location).

Yours very truly,

*H. J. Conrad*  
For: Jack L. Mahaffey  
Production Manager  
Mid-Continent Division

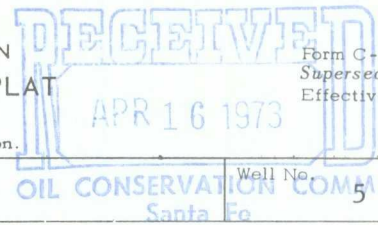
BWB:LA

Attachment

cc - Oil Conservation Commission  
P. O. Box 1980  
Hobbs, New Mexico 88240

NEW MEXICO OIL CONSERVATION COMMISSION  
WELL LOCATION AND ACREAGE DEDICATION PLAT

Form C-102  
Supersedes C-128  
Effective 1-1-65



All distances must be from the outer boundaries of the Section.

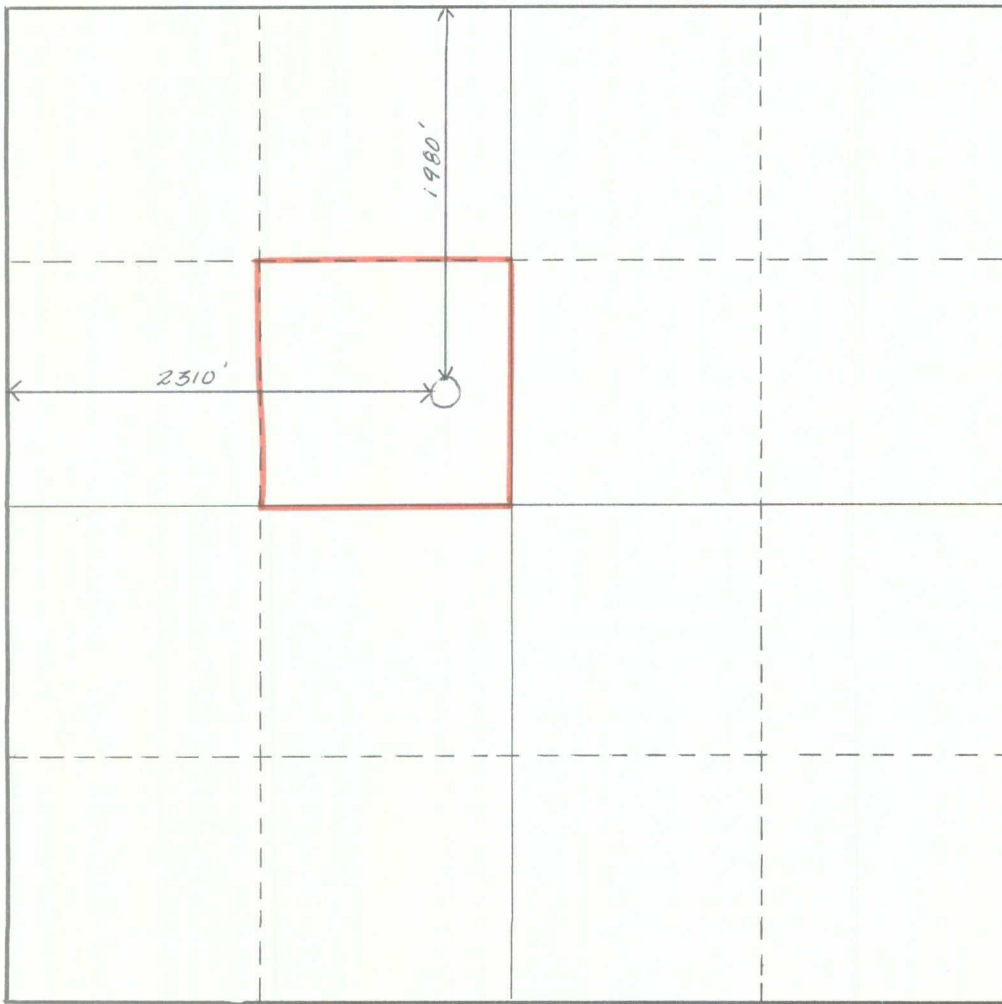
Operator <b>Shell Oil Company</b>			Lease <b>Argo A</b>		Well No. <b>5</b>
Unit Letter <b>F</b>	Section <b>22</b>	Township <b>21S</b>	Range <b>37E</b>	County <b>Lea</b>	
Actual Footage Location of Well: <b>1980</b> feet from the <b>North</b> line and <b>2130</b> feet from the <b>West</b> line					
Ground Level Elev: <b>3414</b>	Producing Formation <b>Blinebry (Gas)</b>		Pool <b>Blinebry</b>		Dedicated Acreage: <b>40</b> Acres

1. Outline the acreage dedicated to the subject well by colored pencil or hachure marks on the plat below.
2. If more than one lease is dedicated to the well, outline each and identify the ownership thereof (both as to working interest and royalty).
3. If more than one lease of different ownership is dedicated to the well, have the interests of all owners been consolidated by communitization, unitization, force-pooling, etc?

☐ Yes ☐ No If answer is "yes," type of consolidation \_\_\_\_\_

If answer is "no," list the owners and tract descriptions which have actually been consolidated. (Use reverse side of this form if necessary.) \_\_\_\_\_

No allowable will be assigned to the well until all interests have been consolidated (by communitization, unitization, forced-pooling, or otherwise) or until a non-standard unit, eliminating such interests, has been approved by the Commission.



CERTIFICATION

I hereby certify that the information contained herein is true and complete to the best of my knowledge and belief.

*A. E. Cordray*

Name

**A. E. Cordray**

Position

**Staff Engineer**

Company

**Shell Oil Company**

Date

**April 11, 1973**

I hereby certify that the well location shown on this plat was plotted from field notes of actual surveys made by me or under my supervision, and that the same is true and correct to the best of my knowledge and belief.

Date Surveyed

Registered Professional Engineer  
and/or Land Surveyor

Certificate No.



RECEIVED  
APR 16 1973  
OIL CONSERVATION COMM  
Santa Fe

2009

REGISTERED NO.

Value \$	NV	Special Delivery \$	
Reg. Fee \$	95	Return Receipt \$	15
Handling Charge \$		Restricted Delivery \$	

Postage \$ 08 00 ☒ AIRMAIL

POSTMASTER (By) *[Signature]*

FROM *Shell Oil Co.*

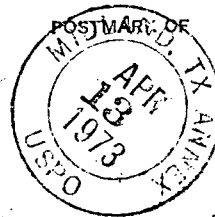
*Box 1909*

*79701*

TO *Shell Oil Corp.*

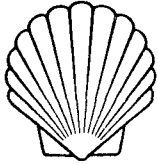
*Box 1150*

*79701*



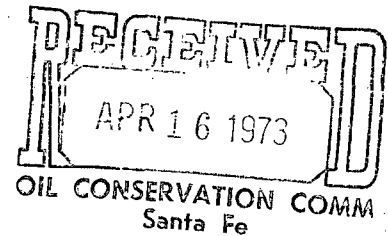
MAILING OFFICE

☆ G.P.O. 1 1970-406-950



# SHELL OIL COMPANY

PETROLEUM BUILDING  
P.O. BOX 1509  
MIDLAND, TEXAS 79701



April 13 1973

Subject: Application for 40-acre  
Non-standard Gas Proration Unit  
Blinebry (Gas) Field  
Lea County, New Mexico

Gulf Oil Corporation (3)  
P. O. Box 1150  
Midland, Texas 79701

Attention New Mexico Gas Accounting Unit

Gentlemen:

This is a notification that Shell is applying for 40-acre non-standard gas proration unit, Blinebry (Gas) Field, located in its Argo "A" No. 5, located 2130' FWL and 1980' FNL, Section 22, T-21-S, R-37-E, Lea County, New Mexico. The well was a Blinebry oil producer in the Blinebry pool. The Blinebry was reclassified January 1, 1972 and the well shut in after work being performed to render it an oil producer.

Your approval of this proration unit will be signified by signing and returning one copy of this letter.

Yours very truly,

Original Signed By  
H. J. Conrad

For: Jack L. Mahaffey  
Production Manager  
Mid-Continent Division

BWB:LA

cc - New Mexico Oil Conservation Commission  
Box 2088  
Santa Fe, New Mexico 87501

New Mexico Oil Conservation Commission  
Box 1980  
Hobbs, New Mexico 88240

APPROVED \_\_\_\_\_

COMPANY \_\_\_\_\_

BY \_\_\_\_\_  
(Name) (Title)

DATE \_\_\_\_\_